

# South Sudan

## Integrated Disease Surveillance and Response (IDSR)

Epidemiological Bulletin Week 08, 2020 (February 17 – February 23)



## Major Epidemiological Highlights in week 08 of 2020

- In week 08, 2020 IDSR reporting completeness was 87% and timeliness was 84% at health facility level. EWARN reporting both completeness and timeliness were 85%.
- Of the 135 alerts in week 08, 2020; 71% were verified 0% were risk assessed and 0% required a response. Malaria (30), AWD (8), measles (14) and bloody diarrhea (28) were the top common alerts generated through the EWARS in week 08, 2020.
- The RRT obtained 42 blood samples from the Yellow Fever (YF) investigations in Kajo-keji. The samples tested PCR negative for YF and other arboviruses following testing at NPHL and UVRI. Serological testing at UVRI revealed two presumptive YF IgM positive samples. Confirmatory testing underway. WHO is supporting MoH to prepare an ICG request for a pre-emptive YF campaign in Kajo-keji.
- Since week 7 of 2019, a total of 288 ILI/SARI samples have been collected and tested in UVRI 228 being negative; 6 (3%) positive for Influenza B (Victoria); 13(7%) positive for Influenza A (H3); and 12(6%) positive for Influenza A (H1)pdm09 and (20) samples are pending test results.

# SURVEILLANCE PERFORMANCE

For the Integrated Disease Surveillance (IDSR)  
network and Early warning alert and response  
network (EWARN)

## IDSR Timeliness and Completeness Performance at Facility Level for week 08, 2020

Completeness States Ranking	States	Supporting Partners	Total No. of Functional Health Facilities in the State	No. of HFs Reported on Time	Timeliness Percentage	No. of HFs Reported regardless of Time	Completeness Percentage
1st	WES	AMREF, World Vision, CUAMM, CDTY, OPEN	213	211	99%	211	99%
2nd	Lakes	Doctors with Africa (CUAMM), LIVEWELL	116	112	97%	114	98%
3rd	Warrap	GOAL, CCM, WVI, Malaria Consortium, UNKEA, Save the Children, MSF	126	115	91%	117	93%
4th	Unity	Cordaid, UNIDOR, IRC, CHADO, CARE International, CRADA, CASS	91	83	91%	85	93%
5th	NBG	Malaria Consortium, Healthnet TPO, IRC, CEDS, IHO	144	122	85%	132	92%
6th	Jonglei	Nile Hope, MDM, JDF, Livewell, CMD, HFO, EDA, CRADA, Malaria Consortium, CMA	155	134	86%	134	86%
7th	WBG	Cordaid, Healthnet TPO, CARE International	77	60	78%	66	86%
8th	CES	HLSS, SSUHA, Healthnet TPO, IHO, GOAL, TRI-SS	121	101	83%	101	83%
9th	EES	Cordaid, HLSS, CCM	145	90	62%	103	71%
10th	Upper Nile	Cordaid, WVI, RI, IMC, NIDO, UNKEA, MC, SSAID	115	65	57%	72	63%
	South Sudan		1303	1093	84%	1135	87%

### Key

		<60%	Poor
		61%-79%	Fair
		80%-99%	Good
		100%	Excellent

The timeliness of IDSR reporting (supported by EWARS mobile) at health facility level was 84% and completeness was 87%. Total of 8 states are above the target of 80% with highest reporting performance in WES with completeness of 99%, while only 2 states are below the target of 80%.

## IDSR Timeliness and Completeness Performance at County Level for week 08, 2020 (1)

Counties	Supporting Partners	Total No. of Functional Health Facilities in the County	No. of HFs Reported on Time	Timeliness Percentage	No. of HFs Reported regardless of time	Completeness Percentage
Rumbek Centre	Doctors with Africa (CUAMM)	23	22	96%	22	96%
Rumbek East	Doctors with Africa (CUAMM)	24	22	92%	23	96%
Rumbek North	Doctors with Africa (CUAMM)	7	6	86%	6	86%
Wulu	Doctors with Africa (CUAMM)	14	14	100%	14	100%
Cueibet	Doctors with Africa (CUAMM)	15	15	100%	15	100%
Yirol East	Doctors with Africa (CUAMM),LIVEWELL	14	10	71%	11	79%
Yirol West	Doctors with Africa (CUAMM)	12	12	100%	12	100%
Awerial	Doctors with Africa (CUAMM)	7	7	100%	7	100%
Yambio	World Vision International	42	40	95%	40	95%
Ibba	AMREF	11	11	100%	11	100%
Maridi	AMREF	26	26	100%	26	100%
Mundri West	CUAMM	21	21	100%	21	100%
Mundri East	CUAMM	19	19	100%	19	100%
Tambura	World Vision International	26	26	100%	26	100%
Mvolo	CUAMM	11	11	100%	11	100%
Nzara	World Vision International	20	20	100%	20	100%
Nagero	World Vision International	10	10	100%	10	100%
Ezo	World Vision International	27	27	100%	27	100%
Abiemnhom	Cordaid	4	4	100%	4	100%
Koch	CRADA,IRC.	6	5	83%	5	83%

Counties	Supporting Partners	Total No. of Functional Health Facilities in the County	No. of HFs Reported on Time	Timeliness Percentage	No. of HFs Reported regardless of time	Completeness Percentage
Gogrial West	GOAL	32	29	91%	30	94%
Gogrial East	GOAL	15	12	80%	13	87%
Abyei	AAA, Save the Children, MSF	15	10	67%	10	67%
Tonj East	CCM	12	12	100%	12	100%
Tonj South	CCM	12	12	100%	12	100%
Tonj North	CCM	14	14	100%	14	100%
Twic Mayardit	GOAL	26	14	54%	26	100%
Bor	MDM + JDF	35	35	100%	35	100%
Duk	MDM + JDF	15	15	100%	15	100%
Pibor	LIVEWELL,CRADA	14	5	36%	5	36%
Akobo	NILE HOPE	8	8	100%	8	100%
Fangak	CMD,HFO	16	16	100%	16	100%
Uror	Nile Hope,Malaria Consortium	8	8	100%	8	100%
Nyirrol	CMA,Malaria Consortium	11	9	82%	9	82%
Twic East	MDM + JDF	11	11	100%	11	100%
Ayod	CMD,EDA	15	15	100%	15	100%
Pochalla	LIVEWELL	9	9	100%	9	100%
Pigi Canal	IMC	6	3	50%	3	50%
Mayendit	CASS	13	13	100%	13	100%
Guit	CHADO	7	4	57%	4	57%

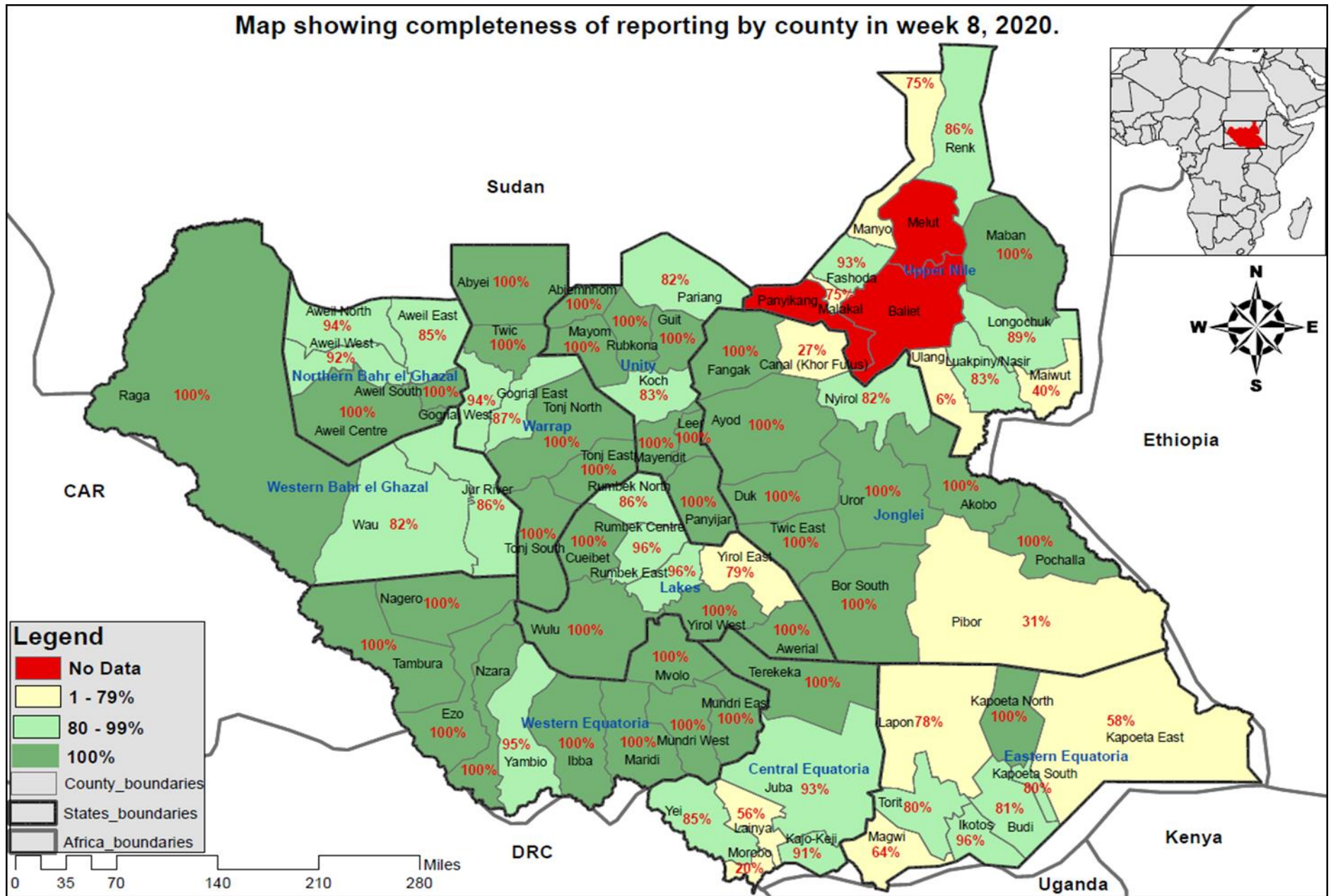
## IDSR Timeliness and Completeness Performance at County Level for week 08, 2020 (2)

Counties	Supporting Partners	Total No. of Functional Health Facilities in the County	No. of HFs Reported on Time	Timeliness Percentage	No. of HFs Reported regardless of time	Completeness Percentage
Malakal	IMC	8	5	63%	5	63%
Akoka	IMC	5	0	0%	0	0%
Baliet	IMC	5	0	0%	0	0%
Renk	WVI + RI	13	10	77%	11	85%
Melut	WVI + RI	8	0	0%	0	0%
Manyo	CORDAID	8	4	50%	6	75%
Maiwut	RI	4	4	100%	4	100%
Fashoda	CORDAID	14	8	57%	8	57%
Ulang	UNKEA,RI	11	0	0%	0	0%
Maban	WVI + RI	16	16	100%	16	100%
Luakping Nasir	UNKEA,RI	19	11	58%	14	74%
Longechuk	RI	9	8	89%	8	89%
Panyikang	IMC	4	0	0%	0	0%
Aweil West	HealthNetTPO	39	36	92%	36	92%
Aweil East	IRC,TADO	44	34	77%	39	89%
Aweil Center	Malaria Consortium(MC)	15	13	87%	15	100%
Aweil South	Malaria Consortium(MC),IHO	11	11	100%	11	100%
Aweil North	HealthNetTPO,IHO	33	31	94%	31	94%
Pariang	CARE International	11	9	82%	9	82%
Panyijjar	IRC	15	15	100%	15	100%

Counties	Supporting Partners	Total No. of Functional Health Facilities in the County	No. of HFs Reported on Time	Timeliness Percentage	No. of HFs Reported regardless of time	Completeness Percentage
Juba	HLSS	44	42	95%	42	95%
Kajo-Keji	SSUHA,GOAL,TRI-SS	11	10	91%	10	91%
Yei	SSUHA	19	16	84%	16	84%
Lainya	SSUHA	16	9	56%	9	56%
Morobo	SSUHA	4	1	25%	1	25%
Terekeka	HealthNetTPO	25	23	92%	23	92%
Torit	Cordaid	20	15	75%	16	80%
Lopa Lafon	HLSS	18	8	44%	9	50%
Ikotos	HLSS	27	23	85%	25	93%
Magwi	HLSS	22	11	50%	13	59%
Budi	Cordaid	21	11	52%	15	71%
Kapoeta South	CCM	10	8	80%	8	80%
Kapoeta East	CCM	12	0	0%	3	25%
Kapoeta North	CCM	15	14	93%	14	93%
Wau	Cordaid	28	23	82%	23	82%
Raja	HealthNetTPO	14	13	93%	13	93%
Jur River	Cordaid	35	24	69%	30	86%
Rubkona	Cordaid,IRC,IOM,MSF	15	13	87%	15	100%
Mayom	CASS	9	9	100%	9	100%
Leer	UNIDOR	10	10	100%	10	100%



Map showing completeness of reporting by county in week 8, 2020.



Disclaimer: The boundaries and names shown and the designations used on this map do not imply the expression of any opinion whatsoever on the part of the World Health Organization concerning the legal status of any country, territory, city or area or of its authorities, or concerning the delimitation of its frontiers or boundaries.

## Surveillance | EWARS surveillance performance indicators by partner week 08, 2020

Partner	Performance		Reporting	
	# of sites	# of reports received	Completeness	Timeliness
CMD	1	1	100%	100%
GOAL	2	2	100%	100%
HAA	5	5	100%	100%
HLSS	1	1	100%	100%
HFO	3	3	100%	100%
IHO	2	2	100%	100%
IMA	8	4	50%	50%
IMC	8	4	50%	50%
MDM	10	10	100%	100%
SMC	5	5	100%	100%
IOM	13	13	100%	100%
IRC	1	1	100%	100%
LIVEWELL	4	4	100%	100%
MEDAIR	2	2	100%	100%
MEDICAIR	9	9	100%	100%
MSF-E	2	2	100%	100%
MSF-H	2	2	100%	100%
RHS	3	0	0%	0%
TADO	4	1	25%	25%
TRI-SS	2	2	100%	100%
UNH	2	2	100%	100%
UNIDOR	1	1	100%	100%
WORLD RELIEF	1	1	100%	100%
<b>TOTAL</b>	<b>91</b>	<b>77</b>	<b>85%</b>	<b>85%</b>

- Both completeness and timeliness were 85% for weekly reporting in week 08, 2020 for partner-supported clinics serving IDP sites.



# EVENT-BASED SURVEILLANCE

Alert management including detection;  
reporting; verification; risk assessment; & risk  
characterization

## Alert by disease and Hubs in Week 08, 2020 [A total of 135 event specific alerts generated by Hubs]

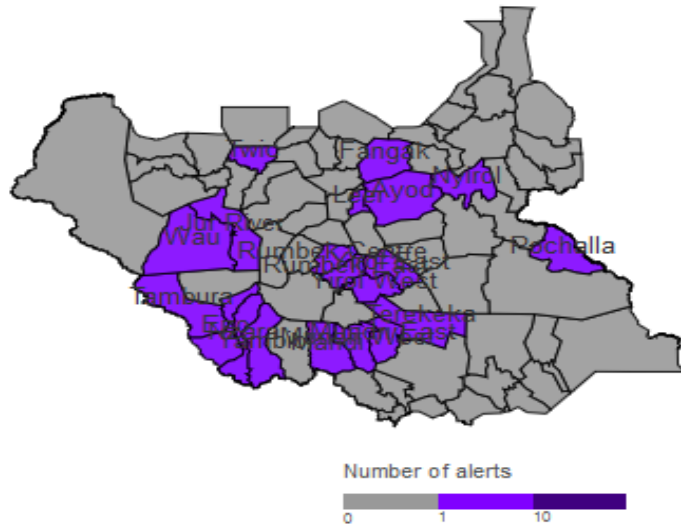
States	AJS	ARI	Acute Watery Diarrhoea	Bloody Diarrhoea	Malaria	Measles	Total Alerts
Jonglei			1	1	1		3
Warrap		3	6	3	1	3	16
EES	1	1	9	2		2	15
Unity	2	3	1	3	2	6	17
WES		6	7	1	16		30
CES		4	2	2	1	1	10
NBG		1			1	1	3
Lakes			11	12	7		30
WBG			1	3	1	1	6
UNS		4		1			5
<b>Total Grand</b>	<b>3</b>	<b>22</b>	<b>38</b>	<b>28</b>	<b>30</b>	<b>14</b>	<b>135</b>

### During this week:

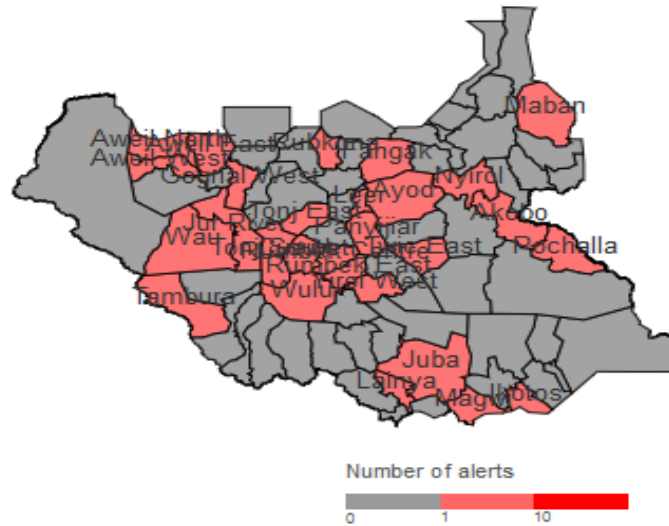
- 3\_AJS alert: 2 is undergoing verification and 1 under monitoring
- 22 ARI: 12 are undergoing verification, 10 been monitored.
- 38 AWD alert: 26 undergoing verification, 11 been monitored and 1 in response
- 28 ABD: 16 undergoing verification, 11 been monitored and 1 under response
- 30 Malaria alerts: 14 undergoing verification, 15 under monitoring and 1 in response
- 12 Measles alert: 3 undergoing verification, 5 under monitoring and 6 in response

# Alert | Map of key disease alerts by county week 08, 2020

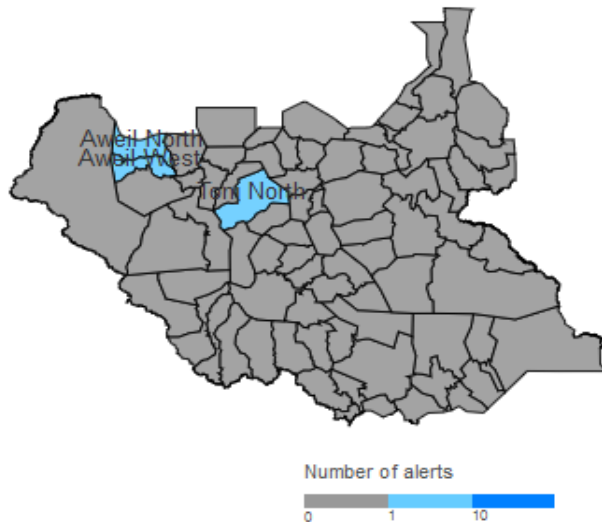
Map 2a | Malaria (W8 2020)



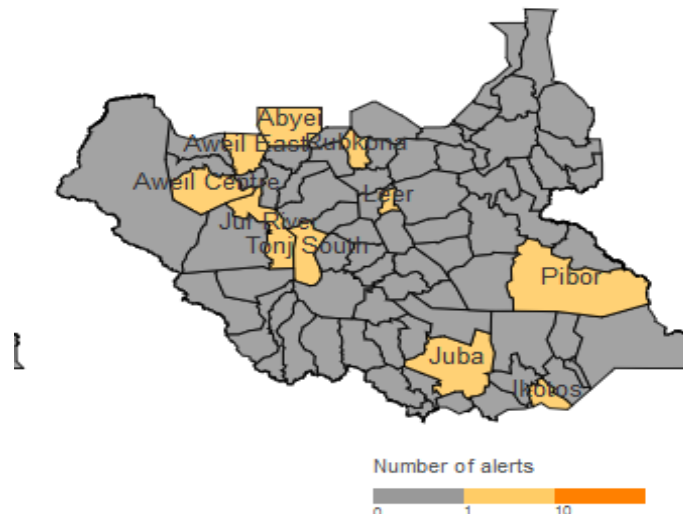
Map 2b | Bloody diarrhoea (W8 2020)



Map 2d | Cholera (W8 2020)



Map 2c | Measles (W8 2020)



82%	71%	% verified
0%	0%	% auto-discarded
4%	1%	% risk assessed
4%	1%	% requiring a response

0	0	Low risk
0	0	Medium risk
3	8	High risk
6	16	Very high risk

# SUSPECTED OUTBREAKS IN 2019

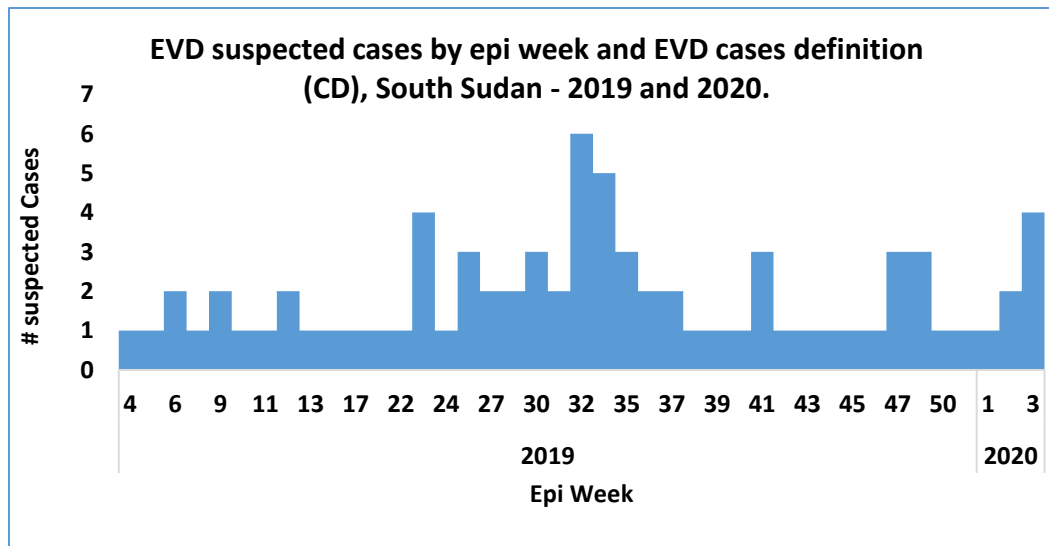
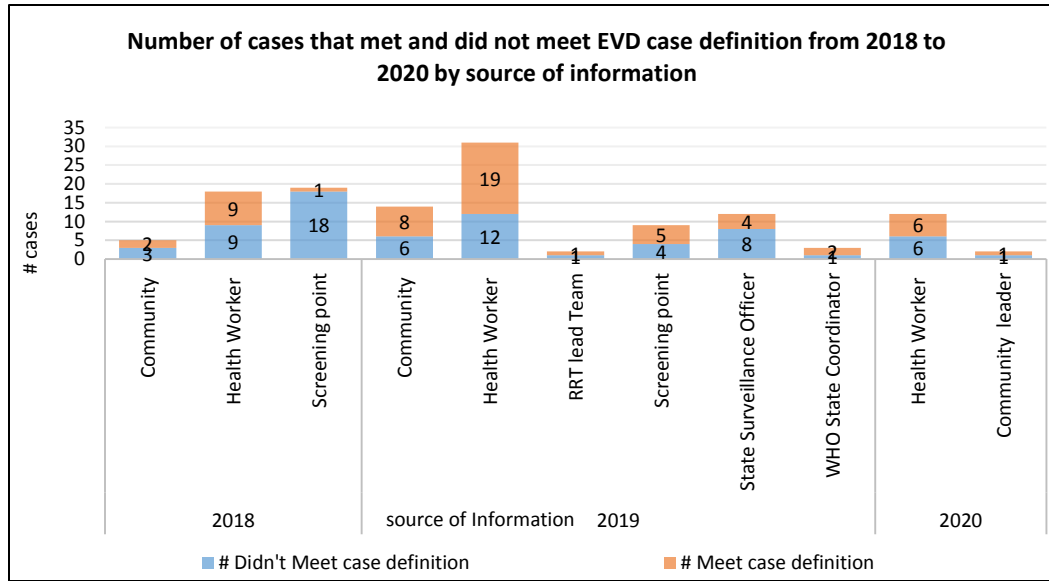
Major suspected outbreaks in South Sudan in  
2020

## EVD Suspect cases in South Sudan 2018 and 2019 as of week 03, 2020

Met EVD cases definition			
<b>2018</b>	<b>30</b>	<b>12</b>	<b>42</b>
Community	3	2	5
Health Worker	9	9	18
Screening point	18	1	19
<b>2019</b>	<b>32</b>	<b>39</b>	<b>70</b>
Community	6	8	14
Health Worker	12	19	30
RRT lead Team	1	1	2
Screening point	4	5	9
State Surveillance Officer	8	4	12
WHO State Coordinator	1	2	3
<b>2020</b>	<b>7</b>	<b>7</b>	<b>7</b>
Health Worker	6	6	6
Community leader	1	1	1
<b>Grand Total</b>	<b>69</b>	<b>58</b>	<b>119</b>

- Since August 2018, at least 119 suspect EVD cases have been reported, of which:
- Most 70 (58.8%) have been reported in 2019
- Most of the suspect EVD cases have been reported by health workers at health facility level
- **No new alerts were reported since week 03, 2019**

# EVD Suspect cases in South Sudan 2018 and 2019 as of week 03, 2020

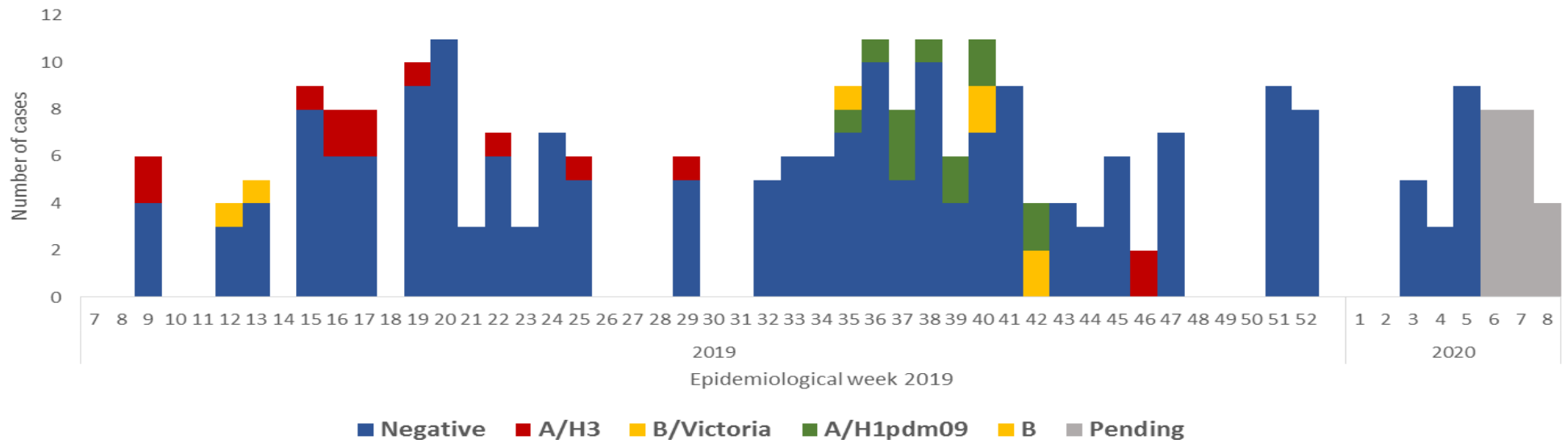


- Most of the suspect EVD cases have been reported in adults 18 years and above (72%)
- Similarly, most suspect EVD cases have been reported in males (56%)
- The distribution suspect EVD cases in both children <18years and adults ≥18yrs is skewed towards the males
- The number of suspect EVD cases reported per in week 03, 2020 were 4 cases
- **No new alerts were reported since week 03, 2019**



## Routine Sentinel Surveillance | Human Influenza

Influenza isolates from sentinel sites in Juba, wk 7, 2019 to wk 8, 2020.

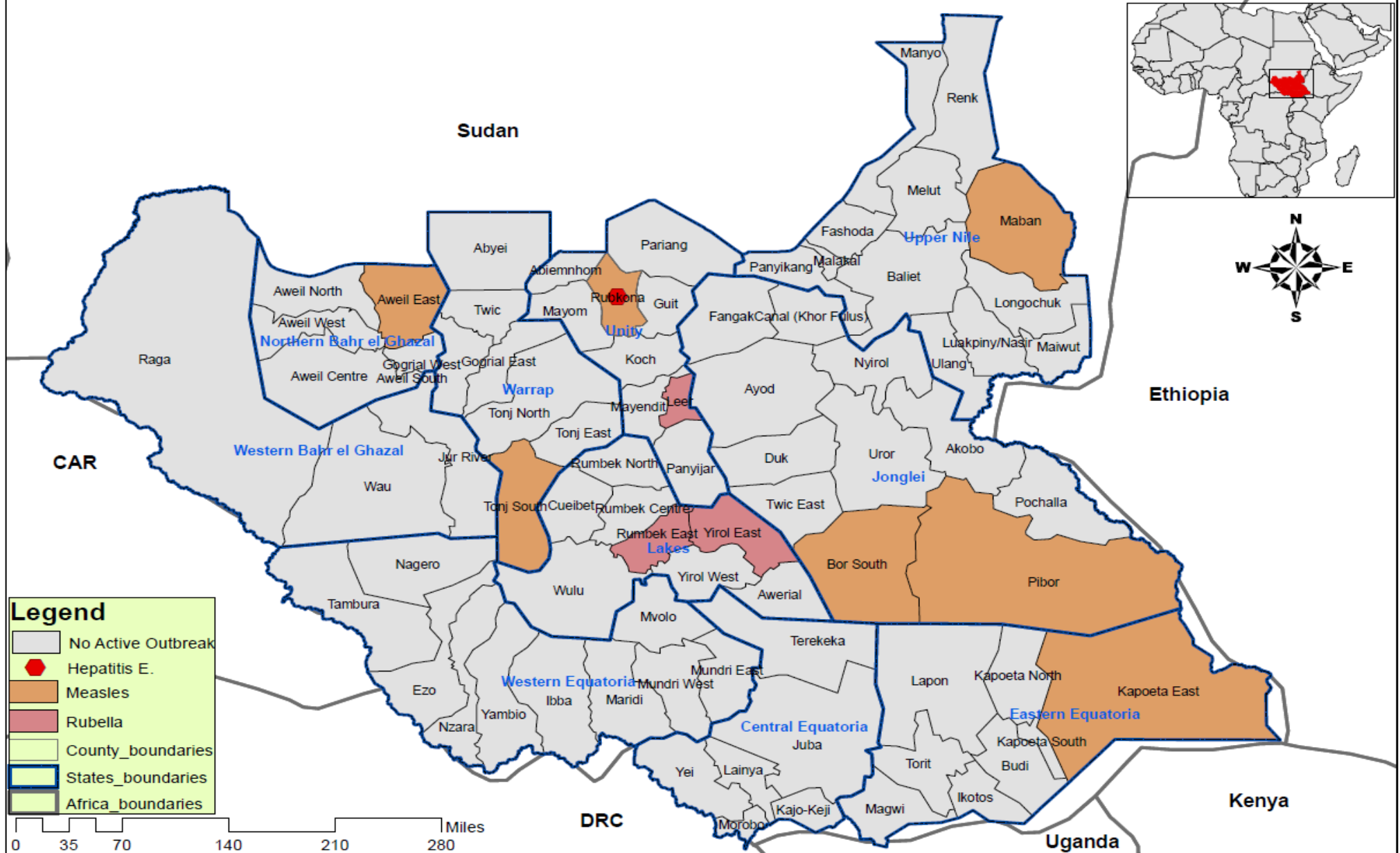


- In week 7, 2019, South Sudan started case-based surveillance for Influenza Like Illness (ILI) and Severe Acute Respiratory Infection (SARI) cases through systematic collection of epidemiological and virological information
- There are currently two designated Influenza sentinel surveillance sites in Juba (Juba Teaching Hospital and Al Sabah Children’s Hospital) that are collecting epidemiological data and samples from ILI/SARI cases
- Since week 7 of 2019, a total of 288 ILI/SARI samples have been collected and tested in UVRI 228 being negative; 6 (3%) positive for Influenza B (Victoria); 13(7%) positive for Influenza A (H3); and 12(6%) positive for Influenza A (H1)pdm09 and (20) samples are pending test results .
- Since the beginning of 2019; Influenza A (H3) has been the predominant isolate. However, Influenza A (H1)pdm09 emerged from week 35 as a new circulating strain.

# ACTIVE OUTBREAKS AND PUBLIC HEALTH EVENTS

Brief epidemiological description and public health response for active outbreaks and public health events

# Map of South Sudan showing counties with active outbreaks of Measles, Rubella and Hepatitis E in 2020.



Disclaimer: The boundaries and names shown and the designations used on this map do not imply the expression of any opinion whatsoever on the part of the World Health Organization concerning the legal status of any country, territory, city or area or of its authorities, or concerning the delimitation of its frontiers or boundaries.

# Response | Summary of major ongoing outbreaks in 2019 and 2020

Aetiological agent	Location (county)	Date first reported	New cases since last bulletin	Cumulative cases to date (attack rate %)	Interventions			
					Case management	Vaccination	Health promotion	WASH
<b>Ongoing epidemics</b>								
Hepatitis E	Bentiu PoC	03/01/2018	2	173 (0.011)	Yes	No	Yes	Yes
Measles	Bentiu PoC	24/04/2019	6	379(0.0158)	Yes	Yes	Yes	N/A
Measles	Maban	1/11/2019	1	137(0.007)	yes	No	Yes	N/A
Rubella	Rumbek East	17/9/2019	NR	23(0.35)	yes	No	Yes	N/A
Measles	Jebel Boma	10/12/2019	6	96(0.063)	yes	No	Yes	N/A
Measles	Aweil East	02/01/2020	2	205(0.009)	yes	No	yes	N/A
Measles	Kapoeta East	18/01/2020	10	16(0.625)	yes	No	Yes	N/A

## ● Measles outbreaks confirmed in 2020

- 5 counties – Tonj East, Magwi, Bor, Kapoeta East and Tonj South

## New confirmed measles outbreaks and response dates:

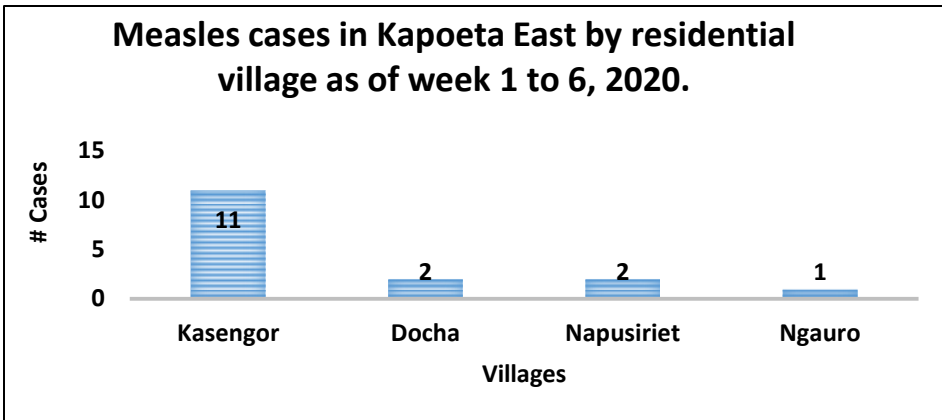
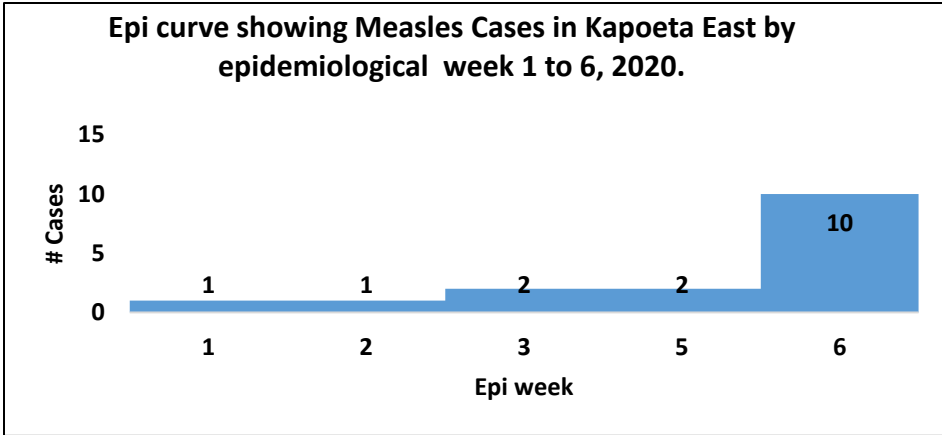
- Bor: **Mass campaign completed**
- Magwi: **Mass campaign completed**
- Tonj East: **Mass campaign completed**
- **Kapoeta East: Mass campaign completed (Kassengor is part of Jebel Boma reactive campaign which was finalized last week)**
- Tonj South: **Mass Campaign completed**

# Measles Outbreak situation & response by county as of week 08, 2020

S/N	County	Population	Confirmed cases	Probable cases	Total cases	Cases per 100,000	Total deaths	CFR %	Date first reported	Emergency Campaign	Admin Coverage	Implementing Partner	Status	Comments
1	Tonj East	180,809	13	48	61	33.73725865	0	0	12-Dec-19	Mass Campaign	Pending result	Mass Campaign	controlled	Mass Campaign Completed
2	Magwi	4699302	5	5	10	0.21279756	0	0	19-Sep-19	Mass Campaign	Pending result	Mass Campaign	controlled	Mass Campaign Completed
3	Bor	320,956	7	7	14	4.361968619	0	0	17-Jan-19	Mass Campaign	115.60%	Mass Campaign	controlled	Mass Campaign Completed
4	Kapoeat East	601,726	6	10	16	2.659017559	0	0	18-Jan-20	Reactive Campaign (Jebel Boma)	Reactive Campaign to start on 26 Feb 2020	IRC	active	Reactive Campaign completed in March 2020
5	Awiel East		10	195	205		0	0	2-Jan-20				active	
<b>Total</b>		<b>5,201,067</b>	<b>41</b>	<b>265</b>	<b>306</b>	<b>40.97104239</b>	<b>0</b>	<b>0</b>						



# Confirmed Measles Outbreak in Kapoeta East County



Age Group	Cases	Percentage	CUM. %
0 - 4 Years	13	81%	81%
5 - 9 Years	3	19%	100%
<b>Grand Total</b>	<b>16</b>	<b>100%</b>	

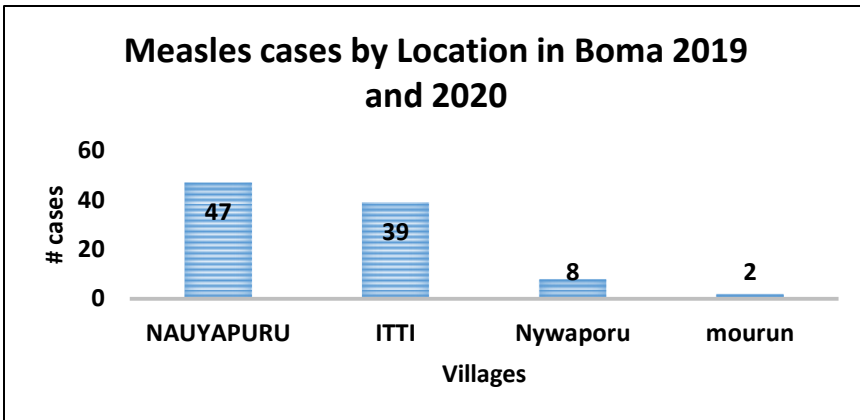
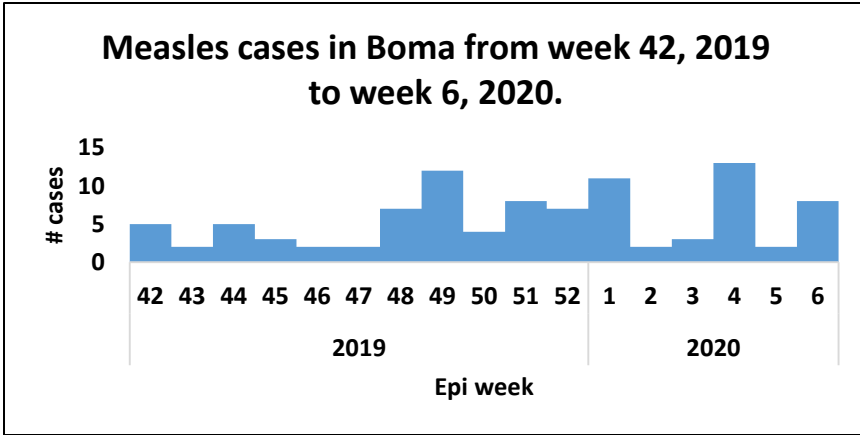
## Descriptive Epidemiology:

- Initial cases were reported on 18<sup>th</sup> January 2020
- A total of 16 Suspected Measles case have been line listed in Kapoeta East county
- 10 new cases were reported in week 06, 2020
- 16 samples were collected of which 06 samples tested IgM positive for measles.
- The most affected payams are: Kasengor and Docha
- (13) 81% of the cases are less than 5 years of age
- Female were 25% and male were 75%

## Response and Recommendations

- Reactive campaign micro plan was developed, targeting 6 payams in Jebel Boma County and part of Kapoeta East (Kasengor). SMOH, Care International and partners completed a reactive campaign , results will be shared.
- Enhancing surveillance and active case search ongoing
- Case management is ongoing in Bor State Hospital

# Confirmed Measles Outbreak in Jebel Boma County

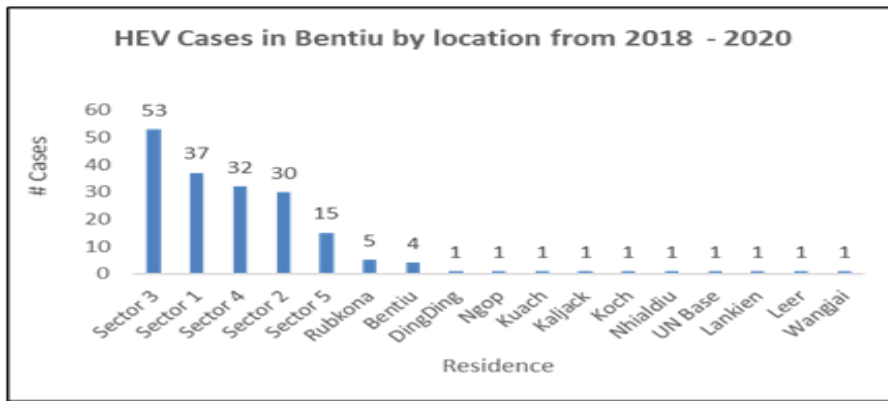
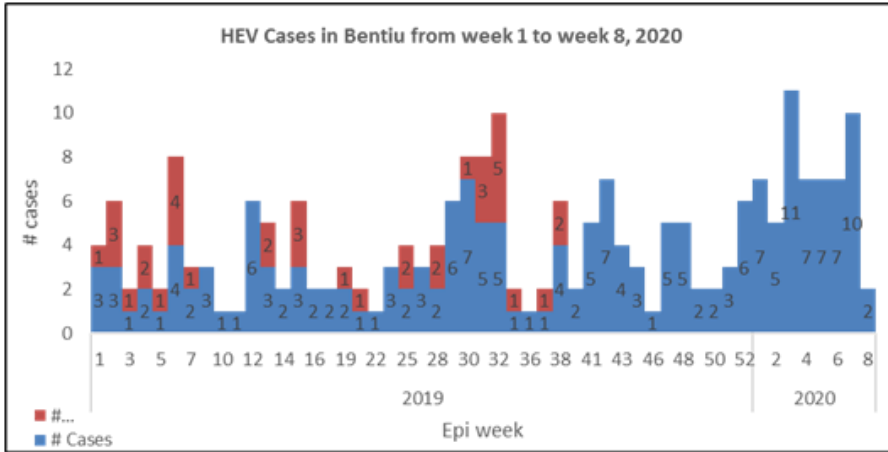


Age-group	Cases	Percentage	% Cum.
0 - 4 Years	82	85%	85%
5 - 9 Years	11	11%	97%
10 - 14 Years	2	2%	99%
15+ Years	1	1%	100%
<b>Grand Total</b>	<b>96</b>	<b>100%</b>	

## Descriptive Epidemiology:

- Initial cases were reported on 14th October 2019
- A total of 96 Suspected Measles case have been line listed in Jebel Boma county
- 6 new cases were reported in week 04, 2020
- 11 samples were collected of which, 08 samples tested IgM positive for measles.
- The most affected payams are: Nauyapuru and Ititi (85) 82% of the cases are less than 5 years of age
- Female were 51% and male were 49%
- 11 community deaths were reported in Jebel Boma county
- **Response and Recommendations**
- SMOH, Care International and partners are completed a reactive campaign, results will be shared. NMOH with support of WHO are planning for PCE.
- Surveillance and line-listing are ongoing
- Case management is ongoing in Jebel Boma Hospital

# Confirmed Measles Outbreak in Aweil East County



Age Group	Cases	Percentage	Cum.%
0 - 4 Years	108	53%	53%
15 + Years	50	24%	77%
10 - 14 Years	25	12%	89%
5 - 9 Years	22	11%	100%
<b>Grand Total</b>	<b>205</b>	<b>100%</b>	

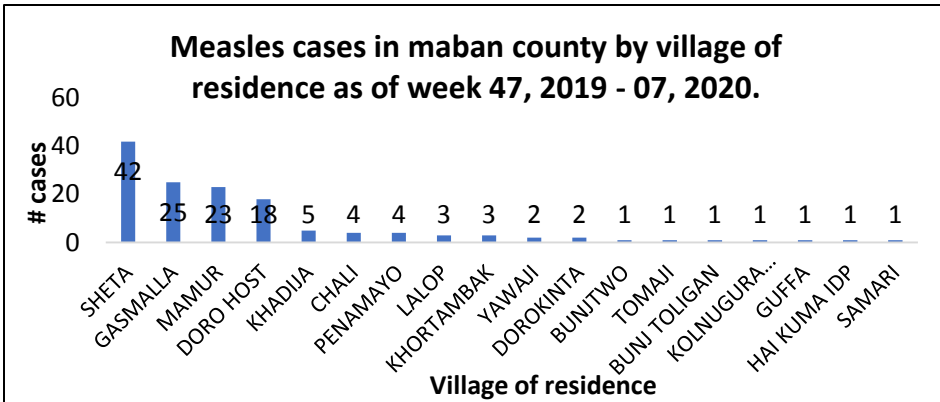
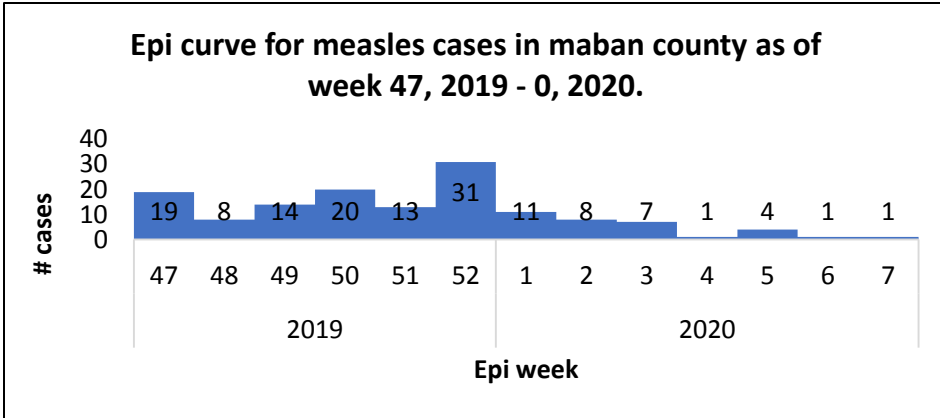
## Descriptive Epidemiology:

- Initial cases were reported on 2<sup>nd</sup> Jan, 2020
- A total of 205 suspected measles cases have been line listed in Aweil East county
- Majority of the cases were from Baac and Madhol payams
- 12 new cases were reported in week 09, 2020
- (108) 53% of the cases are less than 5 years of age
- Male were 59% of cases and female were 41%

## Response and Recommendations

- Reactive campaign was finalized in Aweil East on 24th January, 2020 by SMOH and IOM, coverage was 119% and PCE coverage was 91.5%.
- Majority of the cases reported this week were from Baac payam with administrative coverage of 73% which is not sufficient to interrupt transmission.
- Total of 21 samples were; 10 tested measles IgM +ve and 2 rubella IgM positive.
- Surveillance and line-listing are ongoing
- Case management is ongoing

# Confirmed Measles Outbreak in Maban County



Age group	Cases	Percentage	Cum. %
0 - 4 Years	106	77%	77%
5 - 9 Years	15	11%	88%
10 - 14 Years	9	7%	94%
15+ Year	8	6%	100%
<b>Grand Total</b>	<b>138</b>	<b>100%</b>	

## Descriptive Epidemiology:

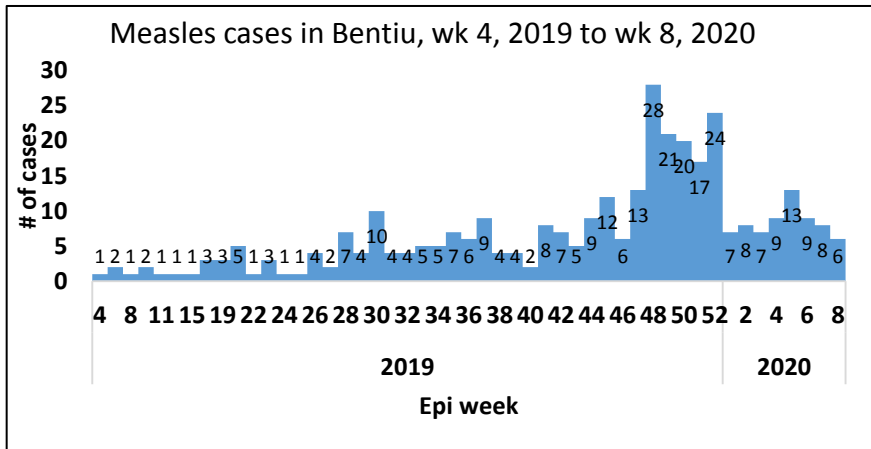
- Initial cases were reported on 1<sup>th</sup> November 2019
- A total of 138 Suspected Measles case have been line listed in Maban county
- 01 new case were reported in week 07, 2020
- 12 samples were collected of which, 11 samples tested positive for measles and (1) positive for Rubella IgM
- The most affected payams are: Sheeta and Gasmalla
- 77% of the cases are less than 5 years of age
- 46% of cases are females while 54% are male
- No deaths reported

## Response and Recommendations:

- Rapid response team deployed to support the response
- Reactive campaign micro plan has been developed for the whole county pending phase 2 mass campaign on 10<sup>th</sup> March 2020
- Surveillance and line-listing are ongoing
- Case management is ongoing
- SMoH, MSF-B conducted a reactive campaign on 4<sup>th</sup> Dec, 2019 targeted 7394 children age 6 months to 15 years in the affected areas in Maban with an average of 73.94%.

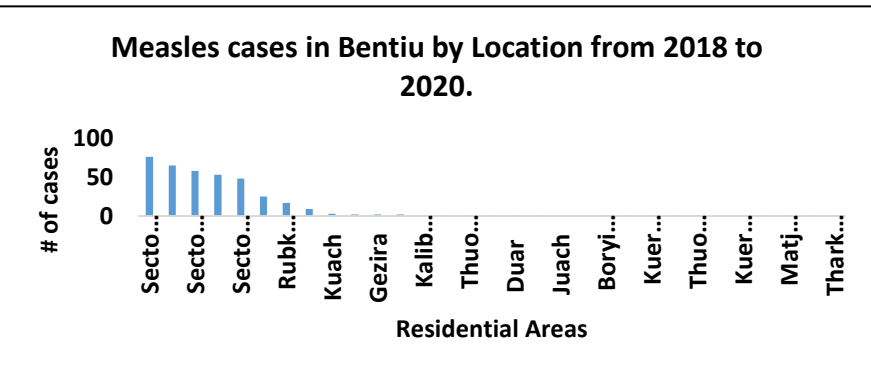
# Response | Confirmed epidemics

## Confirmed Measles and Rubella outbreak in Bentiu PoC



### Epidemiological description

- Bentiu PoC has been reporting suspected measles/rubella cases since week 4 of 2019.
- 06 new cases reported in week 08, 2020
- At least 379 measles cases including 1 death (CFR 0.3%) reported since then.
- Cumulatively, 36 tested cases have tested measles IgM positive while 15 tested rubella IgM positive.
- 46% of cases are female and 54% are male
- 95% are under 5 yrs old, 5% are 5 yrs old and above
- Cases have been reported from inside and outside the PoC with most of the cases originating from the PoC (most cases from sector 5 but generally all the sectors are affected).



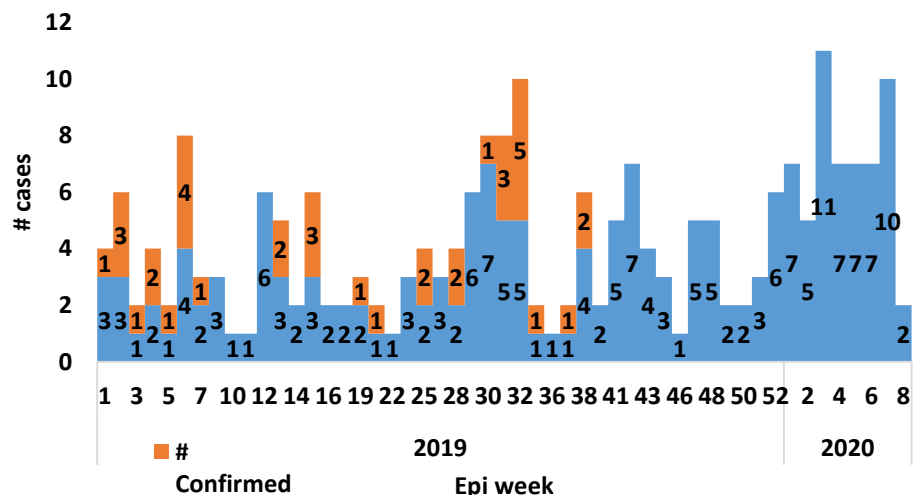
### Response actions

- Several rounds of reactive campaigns were conducted in Bentiu IOM:
  - IOM completed a reactive campaign in Bentiu POC on 31 May 2019, with 21,285 children 6-59 months and coverage of 126% receiving measles vaccination. PCE was done by MoH & WHO, coverage was 74.6%.
  - Another campaign was conducted by SMOH, IOM and partners which was completed during the week of 20th January 2020 with coverage of 126%.

Age Group	Cases	Percentage	Cum. %
0 - 4 Years	359	95%	95%
5 - 9 Years	12	3%	98%
10 - 14 Years	5	1%	99%
15+ Years	3	1%	100%
<b>Grand Total</b>	<b>379</b>	<b>100%</b>	

## Hepatitis E, Bentiu PoC

HEV Cases in Bentiu from week 1 to week 8, 2020



### Descriptive epidemiology

- The persistent transmission of HEV in Bentiu PoC continues with 186 cases since beginning of 2019
- There were (02) new cases reported in week 08, 2020
- All the cases were managed as outpatient cases except for seven cases who were admitted
- Two deaths one on 12th, April 2019 and the second on 11th July 2019
- 50% are female and 50% are male.
- Age group less than 15 years had the most cases with (73%) cases.
- At risk of adverse outcomes when infected in the 3rd trimester of pregnancy
- Use of unsafe drinking water likely to be source of infection
- Up to week 8, 2020; there were 46 cases of HEV in Bentiu PoC including 2 deaths (CFR 0.27%)

### Recommended actions

- Supportive case management guided by the HEV protocol is ongoing
- Social mobilization to raise awareness on modes of transmission, symptoms and where to seek for care
- Case identification and follow up in the communities is ongoing
- The other WASH interventions entail provision of safe water and water quality surveillance along the water chain

Age-Group	Alive	Dead	Grand Total	Percentage	CFR	Cum. %2
1 - 4 Years	59	0	59	32%	0%	32%
10 - 14 Years	30	0	30	16%	0%	48%
15+ Years	48	2	50	27%	4%	75%
5 - 9 Years	46	1	47	25%	2%	100%
<b>Grand Total</b>	<b>183</b>	<b>3</b>	<b>186</b>	<b>100%</b>	<b>0.02</b>	



# Response | Summary of major ongoing outbreaks in 2019 and 2020

Aetiological agent	Location (county)	Date first reported	New cases since last bulletin	Cumulative cases to date (attack rate %)	Interventions			
					Case management	Vaccination	Health promotion	WASH
<b>Ongoing epidemics</b>								
Measles	Juba	21/11/2019	NR	6( 0.1667)	Yes	No	Yes	N/A
Measles	Tonj East	12/12/2019	6	61(0.98)	yes	Yes	Yes	N/A
Measles	Bor	17/01/2020	3	14(0.214)	yes	No	yes	N/A

# EBOLA VIRUS DISEASE[EVD] PREPAREDNESS IN SOUTH SUDAN

Brief on the Ebola situation in DR Congo and updates on EVD preparedness in South Sudan

# Ebola update DRC 3 March 2020

## Current situation

- Currently as of 1 March 2020
- 3444 Cases [ 3310 confirmed & 123 probable]
- 2264 Deaths [2170 confirmed & 94 probable]

## Response update

- 1 August 2019 marked one year since the Government of the Democratic Republic of the Congo declared the Ebola outbreak

## Affected health zones

- From 24 February to 1 March 2020, no new confirmed cases of Ebola virus disease (EVD) were reported in the Democratic Republic of the Congo

# Novel Coronavirus

# Novel Corona Virus Situation Summary

- Situation update as of 11<sup>th</sup> March, 2020

## SITUATION IN NUMBERS total and new cases in last 24 hours

### Globally

118 326 confirmed (4627 new)  
4292 deaths (280 new)

### China

80 955 confirmed (31 new)  
3162 deaths (22 new)

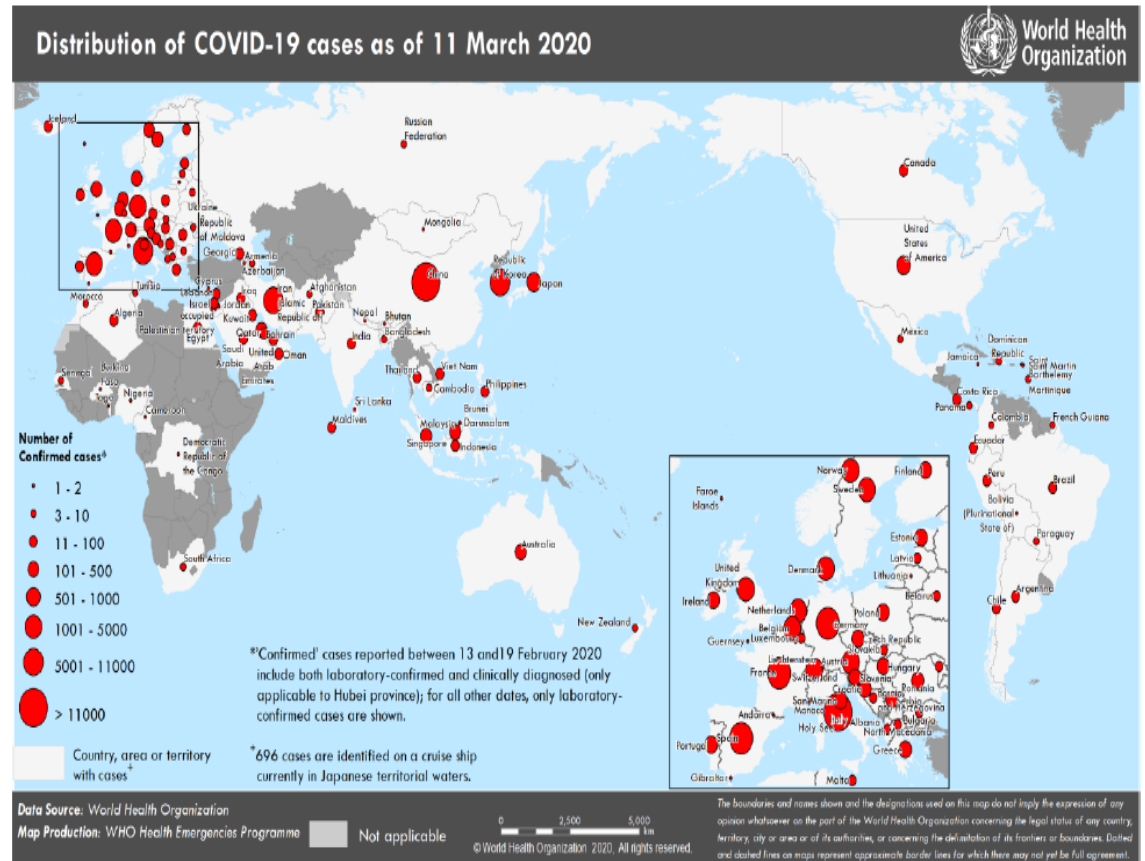
### Outside of China

37 371 confirmed (4596 new)  
1130 deaths (258 new)  
113 countries/territories/  
areas (4 new)

## WHO RISK ASSESSMENT

China	Very High
Regional Level	Very High
Global Level	Very High

Figure 1. Countries, territories or areas with reported confirmed cases of COVID-19, 11 March 2020



WHO: <https://www.who.int/health-topics/coronavirus>

# COVID-19 Preparedness in South Sudan

- No confirmed COVID-19 cases in South Sudan
- Two alerts investigated in South Sudan all tested negative
- COVID Taskforce constituted and convenes Mondays 2-4pm in the PHEOC
- PHEOC activated to support COVID-19 preparedness activities
- Baseline capacity and readiness assessment finalized to inform planning
- Developed COVID-19 preparedness and response plan and is currently being updated to suit the current context
- Screening ongoing at Juba International Airport (screening protocol updated)
- Laboratory testing for COVID-19 established in NPHL

# Overall Conclusions and Recommendations for week 8, 2020

# Conclusion

- The overall IDSR and EWARNS reporting performance in week 8, surpasses the target of 80%. Nevertheless, there is room for improvement in Upper Nile, Central Equatoria, and Eastern Equatoria states.
- With five outbreaks confirmed in 2020; measles remains the most frequent vaccine preventable disease. Universal implementation of the measles control strategy is paramount.
- The two presumptive YF IgM positive cases in Kajo-keji highlight the potential risk of full-blown YF outbreak in Kajo-keji and in the greater Equatoria
- There is increasing COVID-19 spread outside China with a very high risk of importing cases into countries like South Sudan due to diplomatic; education; trade; and humanitarian links.



# Recommendations

- All partners should support CHDs & HF in Upper Nile, Central Equatoria, and Eastern Equatoria to improve IDSR/EWARN reporting.
- All partners should support Government to optimize the implementation of the measles control strategy.
- Yellow fever control: strengthen YF surveillance; pre-emptive campaign in Kajo-keji; and preventive campaign for the greater Equatoria.
- Strengthen national capacities for COVID-19 preparedness and response readiness.

**Thanks to the State Surveillance Officers, County Surveillance Officers and Health Facility in-charges for sharing the weekly IDSR data**

**Thanks to all partners for supporting IDSR weekly reporting and sharing the line lists**

**To access the IDSR bulletins for 2020 use the link below:**

**<https://www.afro.who.int/publications/south-sudan-weekly-disease-surveillance-bulletin-2020>**

## This bulletin is produced by the Ministry of Health with Technical support from WHO

For more help and support, please contact:

### Dr. Pinyi Nyimol Mawien

Director General Preventive Health Services  
Ministry of Health  
Republic of South Sudan  
Telephone: +211916285676

### Mr. Mathew Tut M. Kol

Director, Emergency Preparedness and Response  
Ministry of Health, RSS  
Tell: +211916010382, +211922202028  
Emails: tut1988@yahoo.com, greensouth2020@gmail.com  
Skype: mathew19885

### IDSr Bulletin Editorial Team

1. Mr. Ajak Ater, MoH - Email: ajakater014@gmail.com
2. Ms. Sheila Baya, WHO- Email: bayas@who.int
3. Mr. Robert Lasu Martin, WHO -Email: lasur@who.int
4. Mrs. Rose Dagama , WHO - Email: dagamaa@who.int
5. Dr. Abraham Adut, WHO- Email: abenegoa@who.int
6. Dr. Alice Igale Lado, WHO - Email: ladua@who.int
7. Dr. Joseph Wamala, WHO - Email: wamalaj@who.int
8. Dr. Argata Guracha Guyo, WHO - Email: guyo@who.int

### Notes

WHO and the Ministry of Health gratefully acknowledge the surveillance officers [at state, county, and health facility levels], health cluster and health pooled fund (HPF) partners who have reported the data used in this bulletin. We would also like to thank ECHO and USAID for providing financial support.

The data has been collected with support from the EWARS project. This is an initiative to strengthen early warning, alert and response in emergencies. It includes an online, desktop and mobile application that can be rapidly configured and deployed in the field. It is designed with frontline users in mind, and built to work in difficult and remote operating environments. This bulletin has been automatically published from the EWARS application.

More information can be found at <http://ewars-project.org>

