



Ministry of Health and Social Services
Republic of Namibia

| NAMIBIA COVID-19 SITUATION REPORT NO. 41 | | | |
|--|---------------------|--------------------------|---------------|
| Outbreak Name | COVID-19 | Country affected | Namibia |
| Date & Time of report | 28 April 2020 20:00 | Investigation start date | 13 March 2020 |
| Prepared by | Surveillance Team | | |

Date of outbreak declaration in Namibia: 14 March 2020.

1. SITUATION UPDATE / HIGHLIGHTS

- No new confirmed case was reported in the last 24 days (5 – 28 April 2020).
- Cumulatively, 16 confirmed cases have been reported in the country, to date.
- Of the 16 confirmed cases, eight (8) have recovered.
- Supervised quarantine for all people arriving from abroad, for 14 days is ongoing.
- The lockdown has been extended until 4 May for entire country, as announced on 14 April 2020 by His Excellency, the President of the Republic of Namibia
 - All borders will remain closed except for essential/critical services and humanitarian support to the response.
 - All other prevention measures are applicable to the entire country

2. BACKGROUND

Description of the cases

- **Index cases:** Two confirmed cases of COVID-19 were reported in Windhoek district on 13 March 2020. The married couple; a 35-year-old male and a 25-year-old female, arrived from Madrid, Spain on 11 March 2020.
- Total number of imported cases currently stands at 13 while 3 cases are local transmissions.
- There is no evidence of community transmission in the country at the moment.

Table 1: Confirmed cases by region as of 28 April 2020

| Reporting region | Total Cases | New cases | Active cases | Recovered | Death |
|------------------|-------------|-----------|--------------|-----------|----------|
| Khomas | 11 | 0 | 4 | 7 | 0 |
| //Karas | 1 | 0 | 1 | 0 | 0 |
| Erongo | 4 | 0 | 3 | 1 | 0 |
| Total | 16 | 0 | 8 | 8 | 0 |

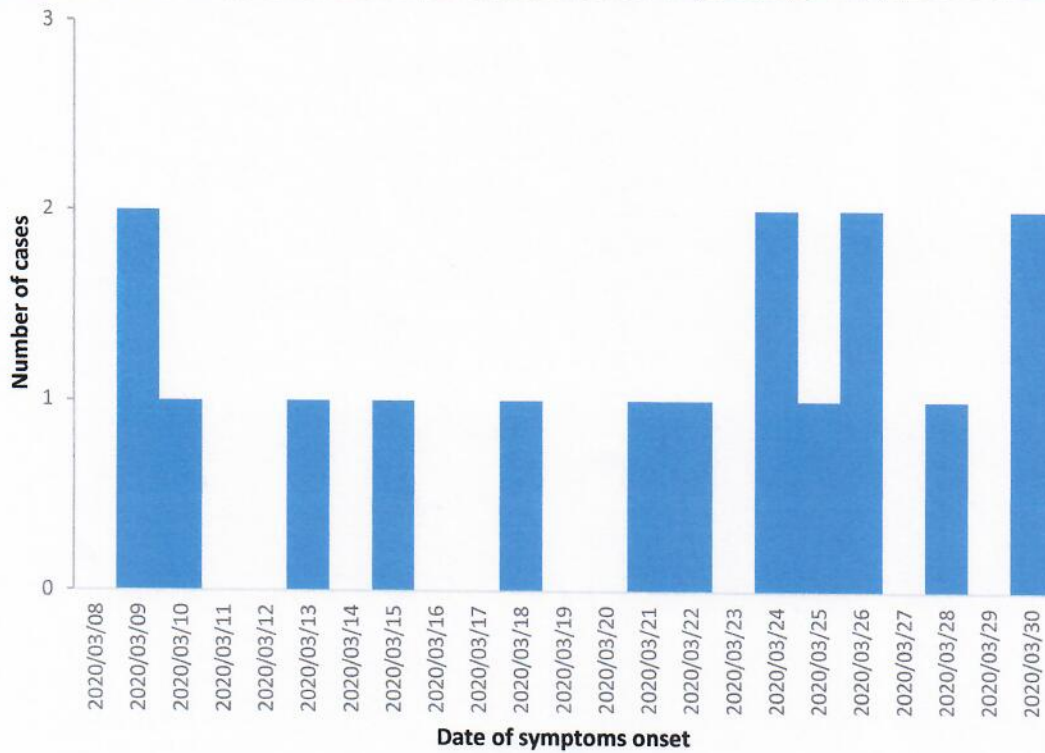


Figure 1: Epi-curve for COVID-19 confirmed cases in Namibia as of 28 April 2020

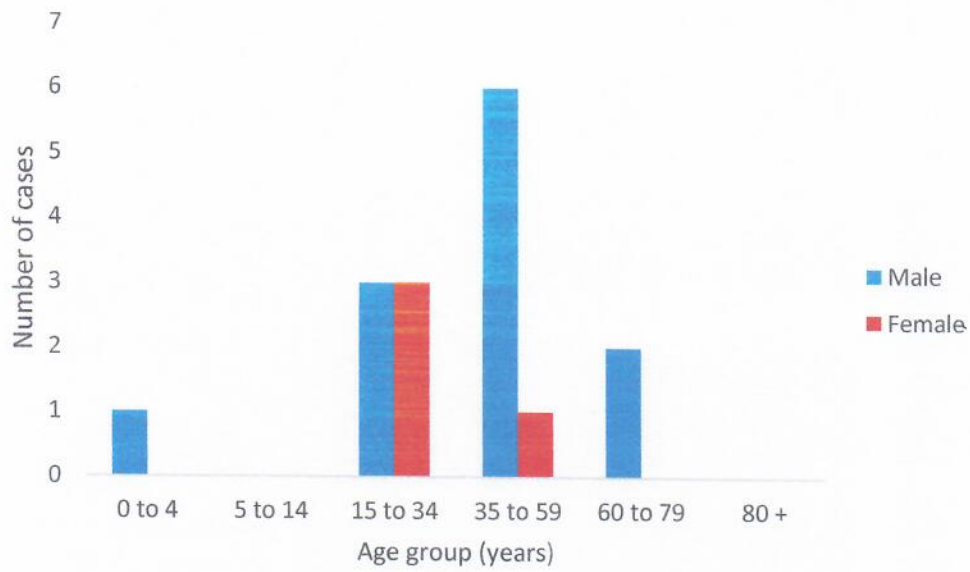


Figure 2: Age and sex distribution for COVID-19 confirmed cases in Namibia as of 28 April 2020

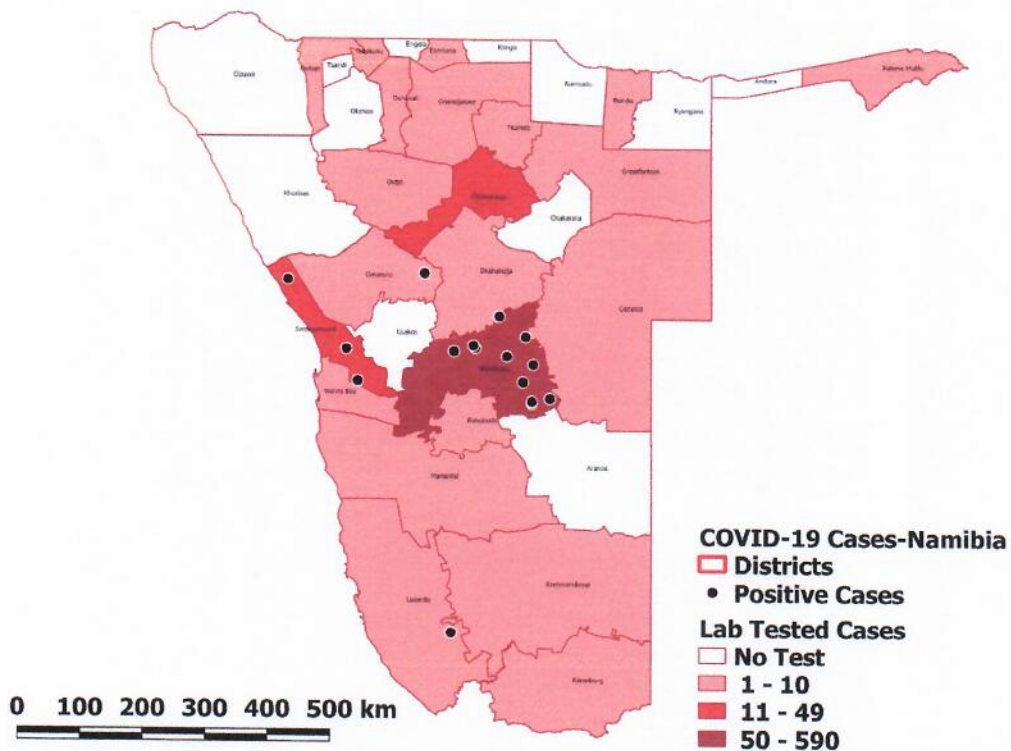


Figure 3: Suspected and confirmed COVID-19 cases in Namibia per District, 28 April 2020

3. PUBLIC HEALTH ACTION / RESPONSE INTERVENTIONS EPIDEMIOLOGY & SURVEILLANCE

- **Case definitions as of 20 March 2020:**

Suspect case:

A. A patient with acute respiratory illness (fever and at least one sign/symptom of respiratory disease, e.g., cough, shortness of breath), AND a history of travel to or residence in a location reporting community transmission of COVID-19 disease during the 14 days prior to symptom onset;

OR

B. A patient with any acute respiratory illness AND having been in contact with a confirmed or probable COVID-19 case in the last 14 days prior to symptom onset;

OR

C. A patient with severe acute respiratory illness (fever and at least one sign/symptom of respiratory disease, e.g., cough, shortness of breath; AND requiring hospitalization) AND in the absence of an alternative diagnosis that fully explains the clinical presentation.

Probable case: A suspect case for whom testing for COVID-19 is inconclusive. Inconclusive being the result of the test reported by the laboratory

Confirmed case: A person with laboratory confirmation of COVID-19 infection, irrespective of clinical signs and symptoms.

Active surveillance working case definition as of 20 April 2020

A patient diagnosed with Upper/Lower Respiratory Infection (Mild or Severe) presenting any of the following signs and symptoms: cough, sore throat, fever, chills, myalgia/body pains or shortness of breath in the past 7 days.

- ***Surveillance activities***

- Daily pillar and intra-pillar discussions are held to deliberate daily progress, gaps and way forward;
- Call centre continue operations for 24 hours per day

- Data entry is ongoing and real time data dashboard has been completed and ready to be launched soon.
- Active case finding in all regions aimed at looking for possible community transmission is ongoing.
- Contact tracing is ongoing (see table 2) and all contacts will be tested
- People under mandatory quarantine are being monitored daily (see table 3) and will be tested on day 12 before release on day 15.

Contact tracing Summary

Table 2: National contacts tracing summary for Covid-19 as of 28.04.2020

| Variables | Contact risk level | | | |
|---|--------------------|--------|-----|-------|
| | High | Medium | Low | Total |
| Total Number of contacts listed (potential) | 68 | 48 | 118 | 234 |
| Total Number of contacts identified | 68 | 48 | 102 | 218 |
| Total Number of active contacts (being followed) | 3 | 1 | 1 | 5 |
| Number of contacts monitored/followed in the last 24hrs | 3 | 1 | 1 | 5 |
| Total number of Contacts completed 14-days follow up | 62 | 44 | 96 | 202 |
| Total Number of contacts that developed signs & symptoms | 25 | 8 | 7 | 40 |
| Total Number of contacts tested positive | 3 | 1 | 0 | 4 |
| *Total Number of contacts tested without signs and symptoms | 20 | 1 | 8 | 29 |
| © Total Number of contacts lost to follow up | 0 | 2 | 5 | 7 |
| Total number of Contacts never reached | 0 | 0 | 16 | 16 |

**Number of contacts without signs & symptoms tested. One tested positive.*

© Seven contacts are lost to follow up, all are non-Namibians and have travelled back to their countries of origin.

Table 3: Number of people in mandatory quarantine facilities as of 28.04.2020

| Region | Newly quarantined 24hrs | Cumulative number of people | Number of people discharged | Number of people in quarantine now |
|--------------|-------------------------|-----------------------------|-----------------------------|------------------------------------|
| Kunene | 4 | 4 | 0 | 4 |
| Omaheke | 18 | 18 | 0 | 18 |
| Kavango | 0 | 2 | 0 | 2 |
| Omusati | 7 | 17 | 0 | 17 |
| Oshana | 0 | 3 | 2 | 1 |
| Ohangwena | 1 | 36 | 16 | 20 |
| Hardap | 0 | 40 | 40 | 0 |
| Otjozondjupa | 0 | 100 | 61 | 39 |
| Khomas | 32 | 190 | 147 | 43 |
| Zambezi | 1 | 112 | 86 | 26 |
| //Kharas | 1 | 100 | 19 | 81 |
| Erongo | 0 | 28 | 3 | 25 |
| Total | 64 | 650 | 374 | 276 |

LABORATORY INVESTIGATIONS

- As of 28 April 2020, a total of 800 COVID-19 specimens were tested in the two laboratories (NIP and Path Care) as per table 4. below:

Table 4: COVID-19 specimens recorded at NIP and Path care Laboratories as of 28.04.2020

| As of 28/04/2020 | Laboratory | | | Total |
|---|------------|------------|--------------|------------|
| | NIP | Path care | South Africa | |
| Total sample received by the Laboratory | 720 | 207 | - | 927 |
| Total sample tested | 600 | 202 | - | 802 |
| Total results received | 600 | 200 | - | 800 |
| Total sample re-tested | 79 | 1 | - | 80 |
| Total results positive | 9 | 6 | *1 | 16 |
| Total results negative | 591 | 196 | - | 787 |
| Total sample discarded | 41 | 2 | - | 43 |
| Total results pending | 0 | 2 | - | 2 |
| Total results inconclusive/indeterminate | 0 | 0 | - | 0 |
| @Total new suspected cases in last 24 hours | 79 | 1 | - | 80 |

*1 Patient specimen collected and tested in South Africa, he travelled back before results came out

@ Total new suspected cases laboratory results received within 24 hours

COORDINATION AND LEADERSHIP:

- Daily feedback meetings between pillar leads, coordination team and Incident manager ongoing, to share daily accomplishments and to address key challenges
- Final inputs to the organogram, SOPs, TORs, M&E, Contingency Response Plan and sentinel surveillance protocol are being incorporated, in order to submit them for clearance to senior management by Monday, 27 April 2020.

CASE MANAGEMENT

- Out of the 16 cumulative confirmed cases, 8 recovered, and have been discharged, after testing negative for COVID-19 at 48 hours' interval.
- The other 8 confirmed cases are in stable condition and all are asymptomatic.
- Conversion of casualty department at Windhoek Central Hospital (WCH) into a highly infectious referral ICU is nearing completion.
- WCH COVID-19 ICU construction complete, and now being furnished.
- Katutura State Hospital (KSH) TB ward being re-purposed into a COVID-19 ward. Completion date set for 08 May 2020.
- Plans for Katutura Nurses Home renovations underway to accommodate the staff of COVID-19 response.
- Pre-fabricated isolation units being constructed in Opuwo, Oshakati, and Rundu.
- Health Facility readiness visit to the regions being planned. Awaiting management approval.
- Bi-weekly ZOOM training sessions for Health Care Workers is ongoing.

INFECTION PREVENTION AND CONTROL (IPC)

- Conducted a training on Overview of COVID-19 and IPC for HCWs in Correctional facilities and from Ministry of Defence
- Finalised IPC materials as part integrated training package
- SOP for management and handling of remains of people who die from COVID-19 is in progress

LOGISTICS:

- Facilitation of the allocation of quarantine facilities in the country and transportation for discharged people from quarantine facilities is ongoing.
- Provision of commodities' specifications and verification for procurement is being done regularly

POINTS OF ENTRY:

- Inspection was done at 5 big open markets of Windhoek to assess it for readiness to re-opening
- Continuing to work on the training content of the planned integrated training for COVID-19 response.
- Tippy taps are being installed at all the roadblocks around Khomas.
- A concept note on establishing truck ports in major towns and along the borders has been finalized.

RISK COMMUNICATION AND COMMUNITY ENGAGEMENT:

- The communication hub continues to give updates on COVID-19 and also clarify miscommunications on a daily basis this is done concurrently with the social media updates.
- The Media continue to communicate messages on COVID-19 and the extension of the lockdown.
- The RCCE continues to share messages on COVID-19 prevention measures

PSYCHOSOCIAL SUPPORT SERVICES:

- Health education, psychosocial support and post counselling services to people under quarantine, COVID-19 confirmed cases and their families are ongoing
- A total of 465 persons in need of shelter housed at two sites.
- Provision of health education, psychosocial support services, as well as food at places where persons in need of shelter are placed is ongoing.
- Persons in need of shelter received medical screening and ten persons were referred to health facilities for treatment.

- Draft leaflet was developed on messages for gender-based violence, alcohol and drug abuse, suicide prevention and prevention of elder abuse during COVID-19.
- Draft SOP for bereavement amidst COVID-19 finalized.

4. CHALLENGES

- Inadequate and at some places lack of isolation units at health facilities and at points of entry in the regions.
- Unavailability of probes and primers for NIP laboratory to start testing for Seasonal Influenza (H1N1) from beginning May 2020.
- Regions need training addressing all pillars of the response team, but travelling seems unfeasible due to the lockdown.
- Inadequate viral swabs and PPE at different regions such as Otjozondjupa and Hardap regions, to implement active case search testing.

5. RECOMMENDATIONS

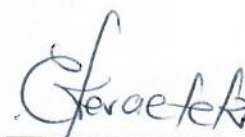
- Establish fully equipped isolation units at health facilities and at some points of entry in the regions.
- NIP to fast track procurement process laboratory testing kits (probes and primers) for Seasonal Influenza (H1N1) testing in the two selected sentinel sites (Katutura Hospital, and Rehoboth Hospital).
- Finalise ONLINE integrated training package (addressing all pillars) by 30 April and complete assessment for readiness for regions and districts to start virtual training on covid-19 by 5th May 2020.
- Provide technical guidance regarding the post-lockdown period measures (i.e. post May 2020)

Approved:



Incident Manager

Date: 28.04.2020



Secretariat