



Ministry of Health and Social Services

Republic of Namibia

NAMIBIA COVID-19 SITUATION REPORT NO. 58			
Outbreak Name	COVID-19	Country affected	Namibia
Date & Time of report	15.05.2020 22:30	Investigation start date	13 March 2020
Prepared by	Surveillance Team		

**Date of outbreak declaration in Namibia: 14 March 2020.**

**1. SITUATION UPDATE / HIGHLIGHTS**

- No new confirmed case was reported in the last 40 days (5 April – 15 May 2020).
- Cumulatively, 16 confirmed cases have been reported in the country, to date.
- Of the 16 confirmed cases, thirteen (13) have recovered
- Supervised quarantine for all people arriving from abroad, for 14 days is ongoing.
- Stage 1 of the state of emergency ended on 4 May 2020, and stage 2 is ongoing from 5 May until 2 June 2020;
  - Wearing a mask in public is mandatory
  - All borders will remain closed except for essential/critical services and humanitarian support to the response.
  - All other prevention measures are applicable to the entire country

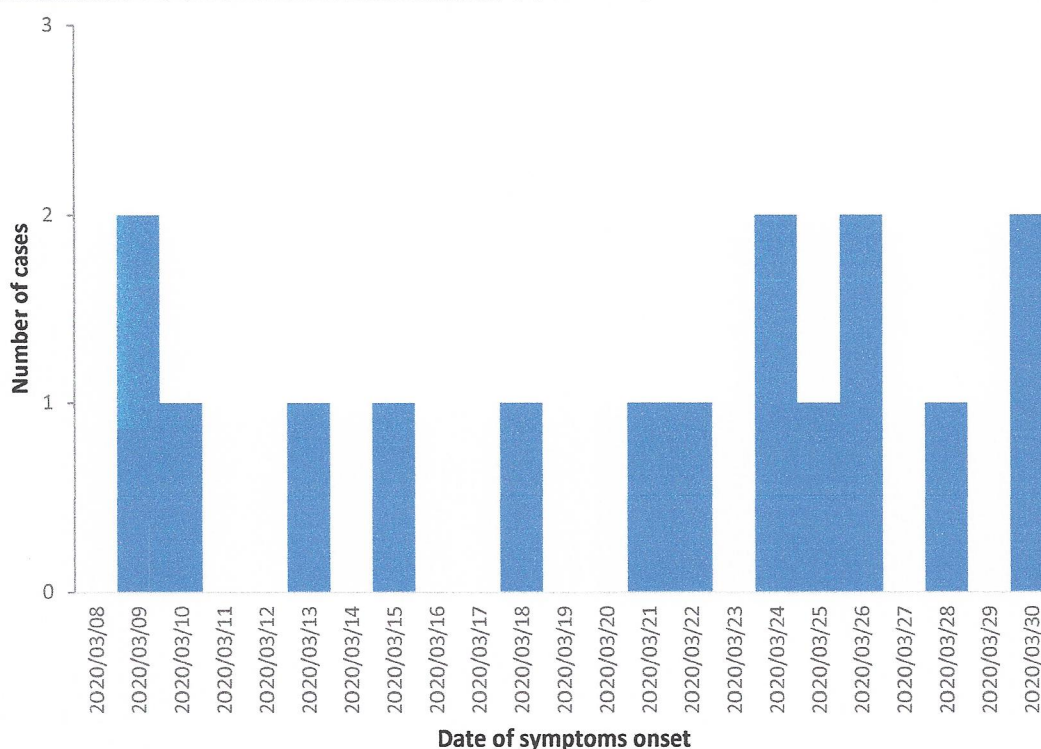
## 2. BACKGROUND

### Description of the cases

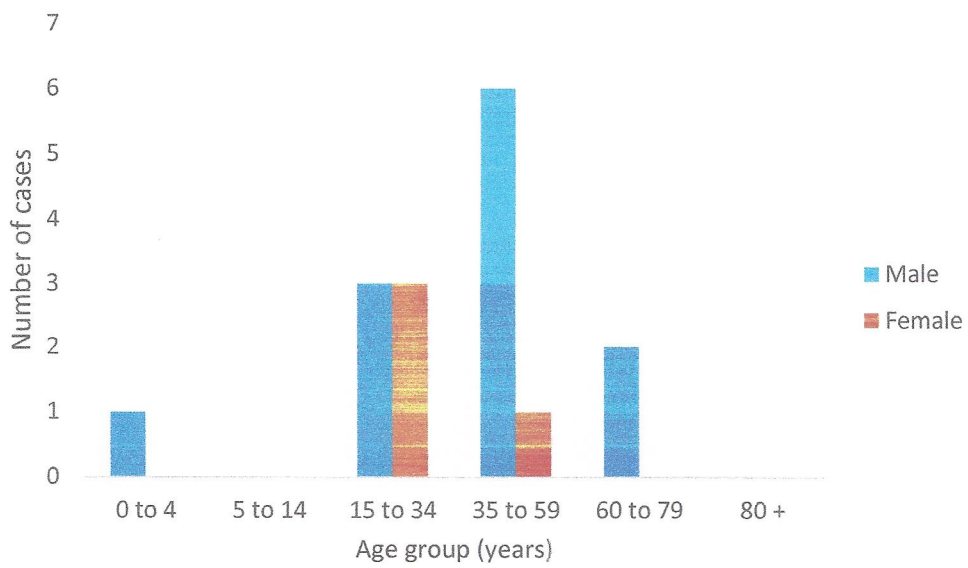
- **Index cases:** Two confirmed cases of COVID-19 were reported in Windhoek district on 13 March 2020. The married couple; a 35-year-old male and a 25-year-old female, arrived from Madrid, Spain on 11 March 2020.
- Total number of imported cases currently stands at 13 while 3 cases are local transmissions.
- There is no evidence of community transmission in the country at the moment.

*Table 1: Confirmed cases by region as of 15 May 2020*

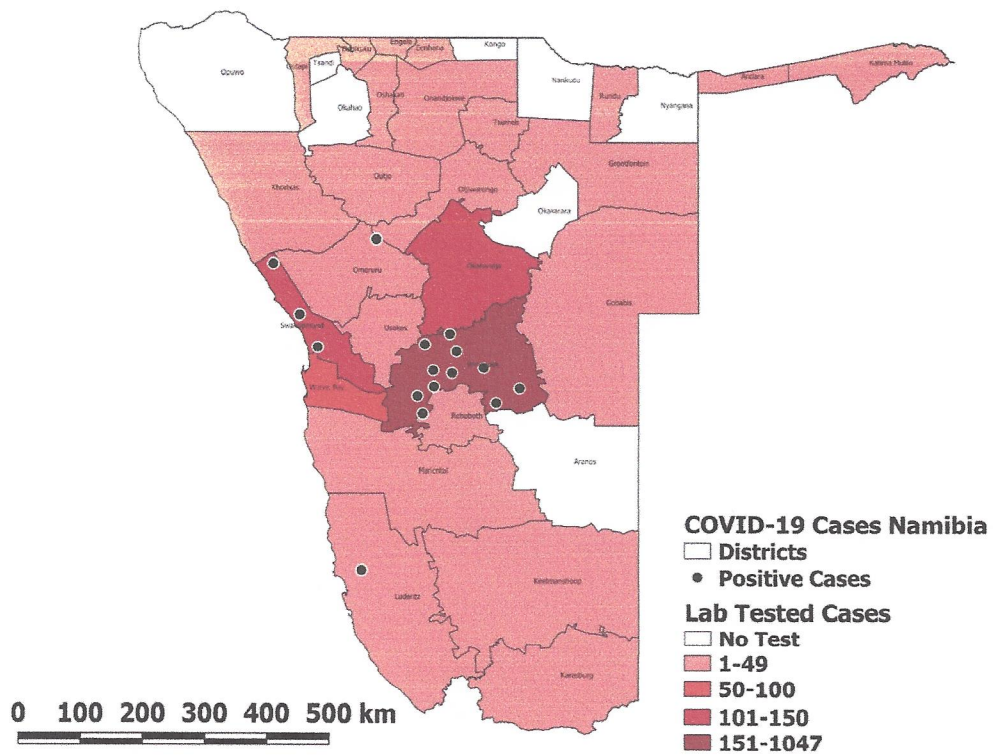
Reporting region	Total Cases	New cases	Active cases	Recovered	Death
Khomas	11	0	2	9	0
//Karas	1	0	0	1	0
Erongo	4	0	1	3	0
<b>Total</b>	<b>16</b>	<b>0</b>	<b>3</b>	<b>13</b>	<b>0</b>



*Figure 1: Epi-curve for COVID-19 confirmed cases in Namibia as of 15 May 2020*



*Figure 2: Age and sex distribution for COVID-19 confirmed cases in Namibia as of 15 May 2020*



*Figure 3: Suspected and confirmed COVID-19 cases in Namibia per District, 15 May 2020*

### 3. PUBLIC HEALTH ACTION / RESPONSE INTERVENTIONS

#### EPIDEMIOLOGY & SURVEILLANCE

- **Case definitions as of 20 March 2020:**

**Suspect case:**

A. A patient with acute respiratory illness (fever and at least one sign/symptom of respiratory disease, e.g., cough, shortness of breath), AND a history of travel to or residence in a location reporting community transmission of COVID-19 disease during the 14 days prior to symptom onset;

OR

B. A patient with any acute respiratory illness AND having been in contact with a confirmed or probable COVID-19 case in the last 14 days prior to symptom onset;

OR

C. A patient with severe acute respiratory illness (fever and at least one sign/symptom of respiratory disease, e.g., cough, shortness of breath; AND requiring hospitalization) AND in the absence of an alternative diagnosis that fully explains the clinical presentation.

**Probable case:** A suspect case for whom testing for COVID-19 is inconclusive. Inconclusive being the result of the test reported by the laboratory

**Confirmed case:** A person with laboratory confirmation of COVID-19 infection, irrespective of clinical signs and symptoms

**Active surveillance working case definition as of 20 April 2020**

A patient diagnosed with Upper/Lower Respiratory Infection (Mild or Severe) presenting any of the following signs and symptoms: cough, sore throat, fever, chills, myalgia/body pains or shortness of breath in the past 7 days.

- ***Surveillance activities***

- Daily pillar and intra-pillar discussions are held to deliberate daily progress, gaps and way forward;
- Call centre continue operations for 24 hours every day.
- Data entry is ongoing and real-time data dashboard has been completed and ready to be launched soon.

- Continuous support for the COVID-19 integrated online training in partnership with WHO is ongoing.
- Active case search in all regions aimed at looking for possible community transmission is ongoing.
- Weekly ZOOM sessions with regional teams is on going last meeting held 15 May 2020
- Contact tracing is ongoing (see table 2).
- People under mandatory quarantine are being monitored daily (see table 3) and will be tested on day 12 before release on day 15 if they test negative.

### Contact tracing Summary

**Table 2: National contacts tracing summary for COVID-19 as of 15 May 2020**

Variables	High	Medium	Low	Total
Total Number of contacts listed (potential)	70	52	137	259
Total number of Contacts never reached	0	0	16	16
Total Number of contacts identified	70	52	121	243
Total Number of contacts that developed signs & symptoms	25	8	7	40
*Total Number contacts without signs & symptoms TESTED	20	5	27	52
© Total Number of contacts lost to follow up	0	2	5	7
Total Number of contacts tested positive (became cases)	3	1	0	4
Number of active contacts monitored/followed in the last 24hrs	3	0	0	3
Total number of Contacts completed 14-days follow up	64	49	116	229

*\*Number of contacts without signs & symptoms tested. One tested positive.*

*© Seven contacts are lost to follow up, all are non-Namibians and have travelled back to their countries of origin.*

**Table 3: Number of people in mandatory quarantine facilities as of 15 May 2020**

Region	Newly quarantined 24hrs	Cumulative number of people	Number of people discharged	Number of people in quarantine now
Kunene	16	42	1	41
Omaheke	1	43	18	25
Kavango	0	4	2	2
Omusati	6	71	41	30
Oshana	1	8	5	3
Ohangwena	0	131	55	76
Hardap	32	102	40	62
Otjozondjupa	0	215	153	62
Khomas	2	296	190	106
Zambezi	7	174	111	63
//Karas	0	190	99	91
Erongo	0	47	35	12
<b>Total</b>	<b>65</b>	<b>1323</b>	<b>750</b>	<b>573</b>

#### LABORATORY INVESTIGATIONS

- As of 15 May 2020, 2101 COVID-19 specimens were tested in the two laboratories (NIP and Path Care) as per table 4. below:

**Table 4: COVID-19 specimens recorded at NIP and Path care Laboratories as of 15 May 2020**

Variables	Laboratory			Total
	NIP	Path care	South Africa	
Total sample received by the Laboratory	1727	566	-	2293
<b>Total sample tested</b>	<b>1556</b>	<b>545</b>	-	<b>2101</b>
Total sample re-tested	112	9	-	121
Total results positive	9	6	*1	16
Total results negative	1547	539	-	2086
Total sample discarded	58	8	-	66
Total results pending	1	0	-	1
Total results inconclusive/indeterminate	0	0	-	0
@Total new suspected cases in last 24 hours	89	59	-	148

\*1 Patient specimen collected and tested in South Africa, he travelled back before results came out

@ Total new suspected cases laboratory results received within past 24 hours

### **COORDINATION AND LEADERSHIP:**

- Feedback meetings of pillar leads and Incident manager (IM) are ongoing (3 times a week), to share accomplishments and to address key challenges.
- Integrated online trainings started on 6 May 2020 and ongoing.
- Submitted final inputs on SOPs and indicators to pillars for finalisation and submission to management for endorsement.

### **CASE MANAGEMENT :**

- Out of the 16 cumulative confirmed cases, 13 have recovered after testing negative twice for COVID-19 at 48 hours' interval.
- The remaining 3 active cases are in stable condition and are all asymptomatic.

### **INFECTION PREVENTION AND CONTROL:**

- Conducted a briefing on the use of masks in public places at a media centre
- Completed a 3-day IPC online training session with over 100 participants with very good feedback from participants.
- Completed IPC Facility Readiness Checklist from regions and continue engaging the Case Management team.
- Distribution of PPE according to the plan for the regions is ongoing.

### **LOGISTICS:**

- Facilitation of the allocation of quarantine facilities in the country and transportation for discharged people from quarantine facilities is ongoing.
- Provision of commodities' specifications and verification for procurement is being done regularly.

### **POINTS OF ENTRY:**

- Screening and inspection of incoming travellers and trucks at points of entry and check points are ongoing
- NUST provided a presentation on a demo software for tracking truck drivers traveling through Namibia.
- Points of Entry pillar is currently setting up the regions for receiving daily reports on the activities at all Points of Entry.

- Conducted two online integrated training session on SOPs at POE in the country
- Finalised the SOP for management and monitoring of trucks and other vehicles and shared with ministry of works and Transport to add their inputs

#### **RISK COMMUNICATION AND COMMUNITY ENGAGEMENT:**

- The communication hub continues to give updates on COVID-19 and clarify miscommunications on a daily basis.
  - This is done concurrently with the social media updates.
- The Media continue to communicate messages on COVID-19 and the lifting of the lockdown to stage 2.
- The RCCE continues to share messages on COVID-19 prevention measures.

#### **PSYCHOSOCIAL SUPPORT SERVICES:**

- Provision of health education, psychosocial support services, as well as food at places where persons in need of shelter are placed are ongoing.

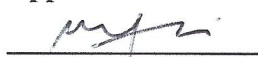
#### **4. CHALLENGES:**


- Inadequate isolation units at health facilities in the regions.
- Unavailability of probes and primers for NIP laboratory to start testing for Seasonal Influenza (H1N1).
- Inadequate PPE
- Delayed distribution of viral swabs to different regions

#### **5. RECOMMENDATIONS AND WAY FORWARD:**

- Establish fully equipped isolation units at health facilities in the regions.
- NIP to fast track procurement process for laboratory testing kits ( probes and primers) for Seasonal Influenza (H1N1) testing.
- Logistics pillar to continue with the procurement and distribution of sufficient PPE to the regions to ensure that response is not interrupted.
- NIP to fast track the distribution of viral swabs to regions

**Approved:**

  
 Incident Manager  
 Date: 15 May 2020

  
 Secretariat