

KEY FIGURES

7.5M People in need of Humanitarian Assistance	2.24M South Sudanese Refugees
1.67M Internally Displaced	1.3M Malnourished Children
188K Persons living in PoC ¹	352K Malnourished Women
93 Stabilization Centers	6.48M Severely Food Insecure
121 066 (20%)	Children under one year vaccinated with oral polio vaccine
962 158	Initial numbers of children Vaccinated against measles
5	Counties with confirmed measles outbreaks in 2020
1	PoC ¹ sites with confirmed measles outbreaks in 2020
3	Counties with malaria cases surpassing their set thresholds in

COVID-19 SITUATION

282 confirmed cases	4 deaths	4 recoveries
-------------------------------	--------------------	------------------------

HIGHLIGHTS

- South Sudan confirmed its first COVID-19 case on 5 April 2020 and has since recorded 282 cumulative cases, four deaths and four recoveries.
- Majority (89%) of the cases have been reported from Juba
- Only 22% (63 cases) of the confirmed cases are symptomatic
- WHO and partners have supported the Ministry of Health to expand the capacity of the Dr John Garang Infectious Diseases Unit (IDU) in Juba from 24 beds to 82 beds.



WHO and Bor PoC Partners meeting with the community in the PoC to introduce the new incoming health partner

Overview of the

- Easing of COVID-19 related travel restrictions in South Sudan

¹ UN Protection of Civilians'

Humanitarian Crisis

As per the decree from the Presidency on 8 May 2020, the High-level Taskforce on COVID-19 instructed the reopening of the airspace as long as passengers complied with the COVID-19 preventive measures that includes social distancing, wearing face masks and gloves, and the use of hand sanitizers. The Juba international Airport reopened on 12 May 2020. The 14-day quarantine directive remains in force for persons returning to South Sudan.

- **Nutrition supplies stolen in UNMISS Pibor site.** A humanitarian partner reported two consecutive thefts of nutrition supplements used in management of acute malnutrition from storage warehouse in UNMISS Pibor site on 4 May 2020 and 10 May 2020.
- **Confirmed COVID-19 cases in the UN Protection of Civilians (PoC) sites:** COVID-19 outbreaks have been confirmed Juba PoC (2 cases) and Bentiu PoC (1 case) raising concern of further spreading in the crowded settlements. Humanitarian partners are supporting state authorities in responding to the outbreak by setting up isolation sites, providing PPEs, hand washing facilities and generator to support the isolation site. The WHO is supporting the state ministry in coordination of the partners operating in the PoCs, scaling up surveillance, contact tracing, daily follow up and sampling of the contacts.

- **Unspecified number of civilians displaced due to inter-communal violence in Mvolo County**

On 11 May 2020, reports emerged that armed youth from Yirol County in Lakes attacked and killed one youth in Dula of Kokori Payam of Mvolo County in an incident related to inter-communal violence. Reportedly the youths in Kokori have quickly mobilized and advanced towards Morphordit for a suspected revenge attack.

- **IDPs and returnees reported in Lankien, Nyirol County and Fangak County.**

An unknown number of IDPs and returnees have been reported in Lankien and Fangak County. The returnees in Lankien are from the surrounding payams, Ethiopia, Juba PoC, Bor PoC and Malakal. In New Fangak and Old Fangak the returnees are coming from various PoC sites, Sudan, Kenya, Ethiopia and Uganda.

Emergency Response Activities

Suspected cholera cases in Aweil

- Two stools samples collected from suspected cholera cases in a facility in Aweil in week 18 have tested negative for *Vibrio cholerae*. The state rapid response team also conducted active case search for suspected cases in villages in Aweil East and Aweil Centre and no cases were identified. As we enter into the rainy season the state and the partners are expected to enhance their surveillance and conduct timely investigation for all acute watery diarrhea alerts.

Emergency health kits for displaced Population in Mvolo County

- The WHO has dispatched an assortment of emergency health kits, and infection prevention and control (IPC) supplies that will be required in ensuring continuity of basic health services for 20000 people for three months. The IPC supplies will be used by the healthcare workers to safeguard their health and safety against SARS-COV-2 while providing the health services. An estimated 10000 people were displaced in the county after an invasion by raiders from a neighboring county.

New health partner in Bor PoC

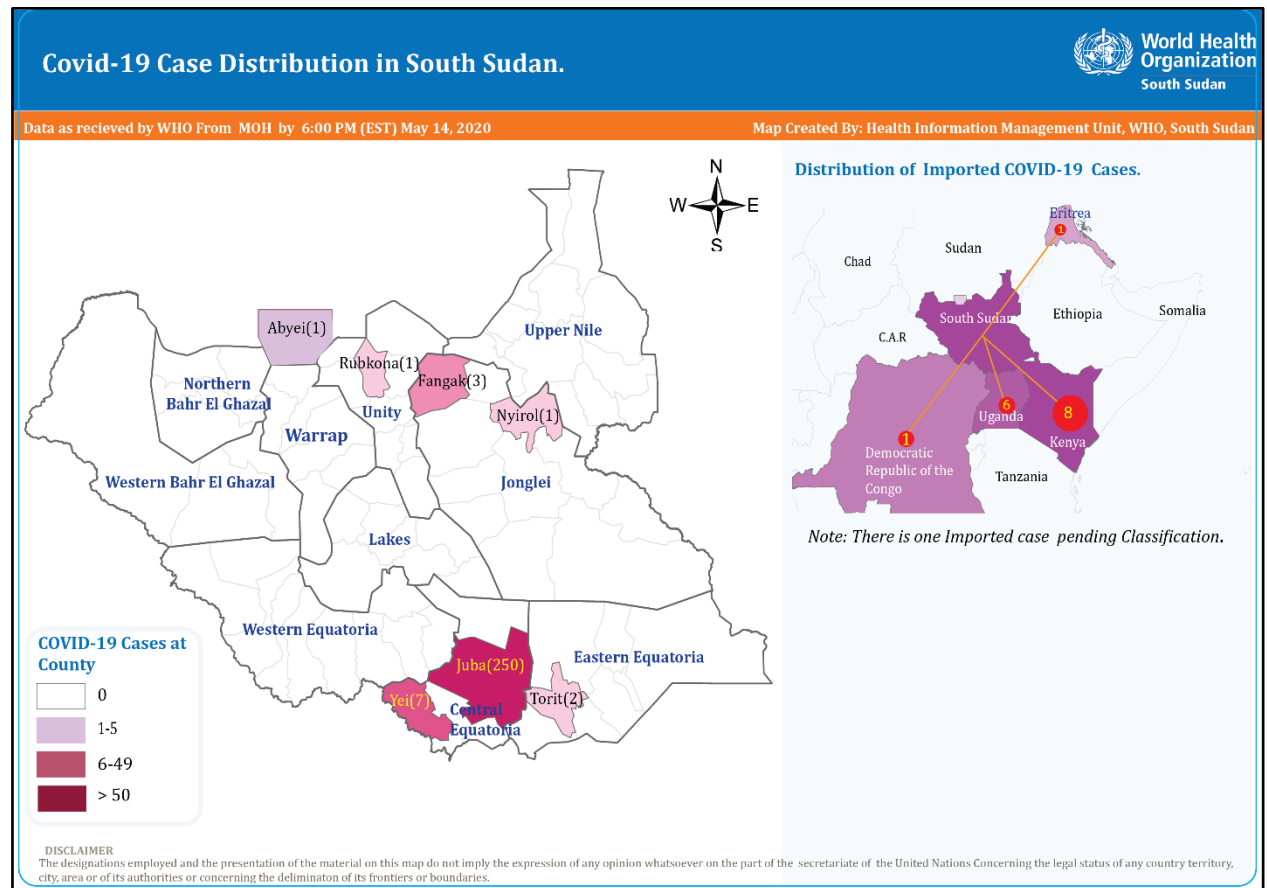
- A new partner, the Health Support Organization (THESO), has taken over operations of the health facility in Bor PoC after the former partner exited following challenges in funding. WHO Bor Hub Office and partners in the PoC facilitated the handover to the new partner and introduction of the partner to the community. WHO will provide technical support and supplies to the new partner to ensure smooth transition and to avoid disruption of the health services in the PoC.

Surveillance, Epidemiological Update and Response for Disease Outbreaks

Performance of the Integrated Disease Surveillance and Response

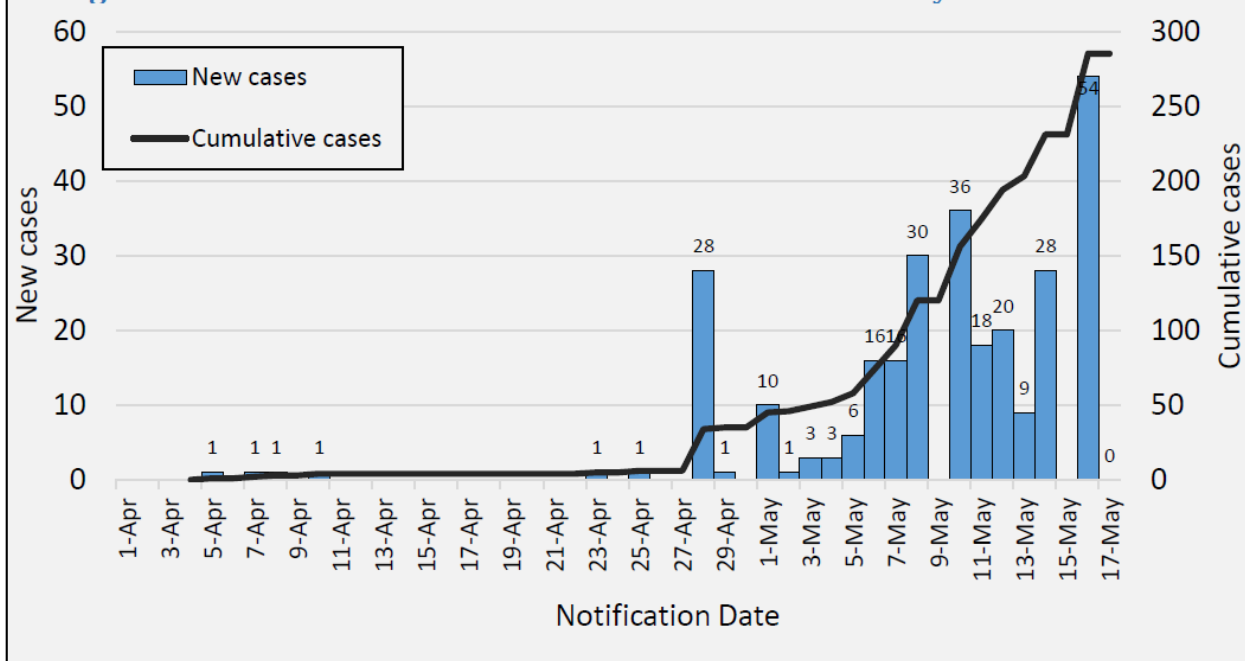
- In epidemiological week 17 of 2020, completeness and timeliness of reporting by health facilities was 88% and 86% respectively. The Early Warning and Response System (EWARS) reporting sites supported by partners had completeness and timeliness of 86% and 84% respectively.
- Malaria (30%), acute bloody diarrhea (24%) and acute respiratory infections (22%) contributed the most alerts in week 17 of 2020. accounted for most alerts through the EWARS.
- Malaria remains the leading cause of morbidity and mortality in the country accounting for 46% of all the illnesses and 3% of all the deaths. Ayod, Fangak and Pibor counties from Jonglei reported malaria cases that surpassed its weekly threshold.

Coronavirus disease (COVID-19) Outbreak in South Sudan



- There are 282 confirmed cases across seven counties and Abyei Administrative Area: Juba (250), Yei (7), Fangak (3), Torit (2), Abyei (1), Nyirrol (1), and Rubkona (1).
- Out of 1 217 cumulative contacts registered, 361 (30%) contacts have completed the 14-day quarantine.
- 3 356 tests have been performed as of 14 May 2020
- Four deaths and four recoveries have been reported to date
- Only 22% (63 cases) of the confirmed cases have presented with symptoms.

Figure 1. New and cumulative confirmed COVID-19 cases by notification date



COVID-19 public health response activities

- Sub-national coordination:** All states and administrative areas COVID-19 Task Forces are meeting regularly, with further decentralization through meetings at county level, to coordinate and scale up the response efforts.
- Expansion of the Infectious Disease Unit in Juba:** With support from the WHO and partners, the Ministry of Health has expanded the capacity of the Dr John Garang Infectious Diseases Unit (IDU) in Juba from 24 beds to 82 beds in response to the increasing number of COVID-19 admission cases.
- Rapid Response Teams (RRTs) and COVID-19 Alerts:** The cumulative number of alerts as of 9 May 2020 is 226, of which, 214 (95%), have been verified with samples collected. Most alerts have come from the Central Equatoria State (75%) and Eastern Equatoria State (8%).
- Orientation of state RRTs and healthcare workers on COVID-19:** WHO hub offices have completed orientation of the State Rapid Response teams (sRRTs) on COVID-19 case investigation, active case search, contact tracing and respiratory sample collection in nine (9) states. This will enable timely alert investigation, active case search and sample collection for laboratory confirmation.

Ebola Virus Disease in Democratic Republic of the Congo (DRC)

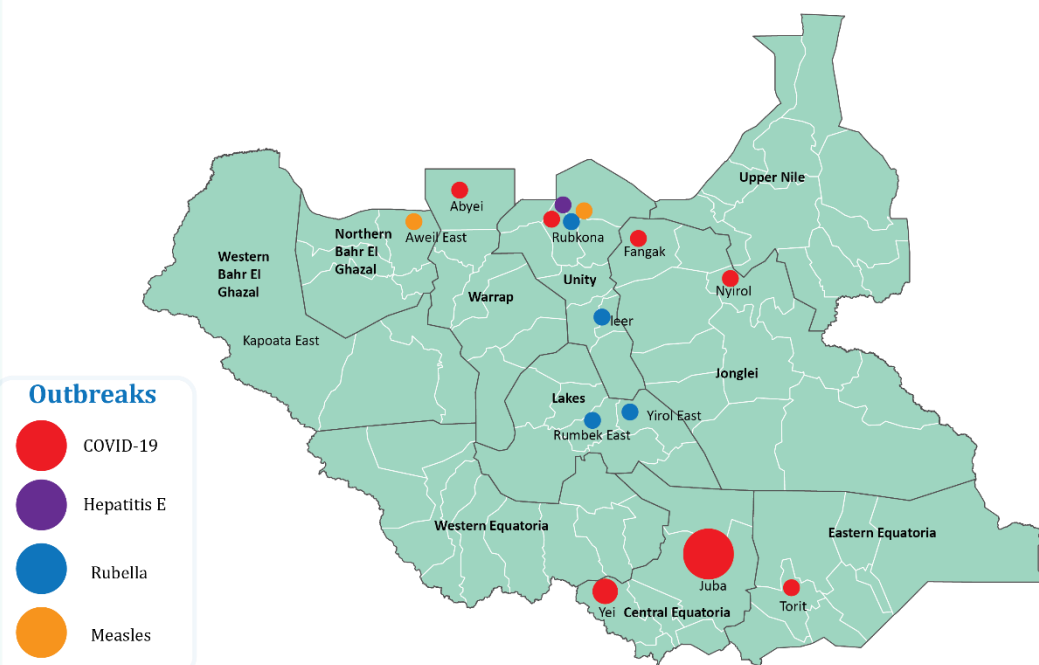
- Since the resurgence of the outbreak on 10 April 2020, seven confirmed cases have been reported from Kasanga, Malepe and Kanzulinzuli Health Areas in Beni Health Zone.
- Specimens from all confirmed cases have been sent to the Institut Research Biomédicale (INRB) for genetic sequencing to investigate the source of infection
- South Sudan intensified preparedness activities on the border areas are ongoing.

For more information, please visit: <https://www.who.int/emergencies/diseases/ebola/drc-2019/situation-reports>

Measles and Rubella Outbreaks

- Measles outbreak remains active in Bentiu PoC (121 cases) and Aweil East (316 cases) where 5 new cases and 17 new cases were reported respectively since last bulletin. WHO is working with the State Ministries of Health and partners to plan for an appropriate response while adhering to COVID-19 preventive measures and ensuring the safety of the vaccinators.

Map Showing Outbreaks in South Sudan, 2020



Outbreaks

- COVID-19
- Hepatitis E
- Rubella
- Measles

DISCLAIMER
The designations employed and the presentation of the material on this map do not imply the expression of any opinion whatsoever on the part of the secretariat of the United Nations concerning the legal status of any country territory, city, area or of its authorities or concerning the delimitation of its frontiers or boundaries.

Map Created by:
Health Information Management Unit, WHO South Sudan.

For more details, visit: <https://www.afro.who.int/publications/south-sudan-weekly-disease-surveillance-bulletin-2020>

Operational gaps and challenges

- Limited resources to cover all the affected counties.
- Weak coordination mechanisms at sub-national level.
- Insecurity and inaccessibility in conflict affected counties.
- Huge operational costs measured against available donor funds
- Inadequate human resources for health at subnational levels

South Sudan: Bi-Weekly Humanitarian Situation Report

Emergency type: Humanitarian Crises

Issue 07 | Date: 01-- 15 May 2020

Resource Mobilization

Key Donors

Name of appeal	Required US \$\$	Secured in US \$	Gap in US \$
WHE Operations	22 million	2 million	20 million

WHO Country Office of South Sudan registers appreciation for the great support provided from all our donors. The donors are listed in alphabetical order.

- Central Emergency Response Fund (CERF)
- European Union Humanitarian Aid (ECHO)
- Global Alliance for Vaccine Initiative (GAVI)
- United States Agency for International Development (USAID)
- The Government of Japan
- The Department for International Development (DFID)
- South Sudan Humanitarian Fund (SSHF)
- World bank

Editorial Team: Dr Joseph Wamala, Dr Diba Dulacha, Dr Chol Yur, Ms Sheila Baya, and Mr Atem John

For more information, please contact

Dr Olushayo OLU
WHO Country Representative
Email: oluo@who.int

Dr Guracha ARGATA
WHO Health Emergency Team Lead
Email: guyoa@who.int

Mr Boniface Ambani
Health Information Management Team
Lead
Email: ambanib@who.int