

## KEY FIGURES

<b>7.5M</b> People in Need of Humanitarian Assistance	<b>2.24M</b> South Sudanese Refugees
<b>1.67M</b> Internally Displaced	<b>1.3M</b> Malnourished Children
<b>188K</b> Persons living in PoC <sup>1</sup>	<b>352K</b> Malnourished Women
<b>93</b> Stabilization Centers	<b>6.48M</b> Severely Food Insecure
<b>121 066 (20%)</b>	Children under one year vaccinated with oral polio vaccine
<b>962 158</b>	Initial numbers of children vaccinated against measles
<b>5</b>	Counties with confirmed measles outbreaks in 2020
<b>1</b>	PoC <sup>1</sup> s sites with confirmed measles outbreaks in 2020
<b>0</b>	Counties with malaria cases surpassing their set thresholds in

## COVID-19 SITUATION

<b>1317</b> confirmed cases	<b>14</b> deaths	<b>6</b> recoveries
--------------------------------	---------------------	------------------------

## HIGHLIGHTS

- 1 317 COVID-19 cases and 14 deaths (case fatality rate of 1.1%) have been reported across the country.
- WHO donated severe acute malnutrition (SAM) with medical complications kit to Kuach PHCC Stabilization Center in Guit County.
- WHO is working with the government and partners to plan and implement a measles follow up campaign in Aweil East where at least 694 cases including 7 deaths (CFR 1%) have been reported since 2 January 2020.
- A new Ebola virus disease outbreak confirmed in Wangata health zone, Mbandaka, in Équateur province of the Democratic Republic of Congo (DRC) on 1 June 2020. As of 4 June 2020, a total of 8 cases including 5 confirmed, 3 probable, and 4 deaths (CFR 50%) have been reported.



WHO and partners training health care workers on COVID-19 preventive measures in Aweil West County

<sup>1</sup> UN Protection of Civilians'

## Overview of the Humanitarian Crisis

- **Dissolution of the High-level Taskforce on COVID-19:** The President of the Republic of South Sudan dissolved the High-Level Taskforce (HLTF) on coronavirus on 15 May 2020 and reconstituted a new National Task Force Committee to be headed by the Vice President in charge of the service cluster.
- **Warning on floods as the rainy season begins:** The South Sudan Government is concerned about the rising water levels in the African Great Lakes region and warned its citizens to be prepared for imminent floods in the coming days as the rainy season begins. Already heavy rains and flooding of roads and homes have been reported in Bor town and Bor PoC site. Greater Kapoeta, Pochalla, SW Upper Nile, and Canal/Pigi, Nyirol counties predicted to be impacted more than usual in the first half of June 2020.
- **IDPs in Lainya County in the dire humanitarian situation:** The Relief and Rehabilitation Commission (RRC) in Lainya County has reported dire humanitarian situation of the 8 196 new IDPs that have arrived in the area. The reported needs include food, non-food items, shelter, health, and nutrition services.
- **IDPs reported in Uror, Nyirol and Akobo Counties:** Over 30 000 persons were displaced and 2 800 homes burnt, following attacks in Pieri and surroundings locations in Uror County. Some 210 people including three humanitarian workers were killed, 300 wounded and 73 (25 women and 48 children) abducted. The immediate needs of the IDPs include nonfood items (NFI) (tents, NFIs, blankets, mats, cooking utensils and clothes), food, WASH and health services (medicine and mobile clinics)
- **Inter-agency assessment mission conducted in Gogrial East County:** An inter-agency assessment was conducted in Mayen-Jur, Gogrial East County from 22 and 23 May 2020. The assessment followed a report from RRC of large numbers of displaced people due to armed clashes. Immediate priority needs identified included shelter, non-food items, food, and water. There was no social distancing due to a lack of knowledge about COVID-19 preventive measures. It was reported that more than 32 women were abducted by the suspected attackers and 9 children were still missing.

## Emergency Response Activities

### Nutrition support in stabilization centers in Floods Affected Counties

- WHO donated one severe acute malnutrition (SAM) with medical complications kit to Kuach PHCC Stabilization Center in Guit County. This will support the treatment of 50 children for 3 months at the stabilization center.

## Surveillance, Epidemiological Update, and Response for Disease Outbreaks

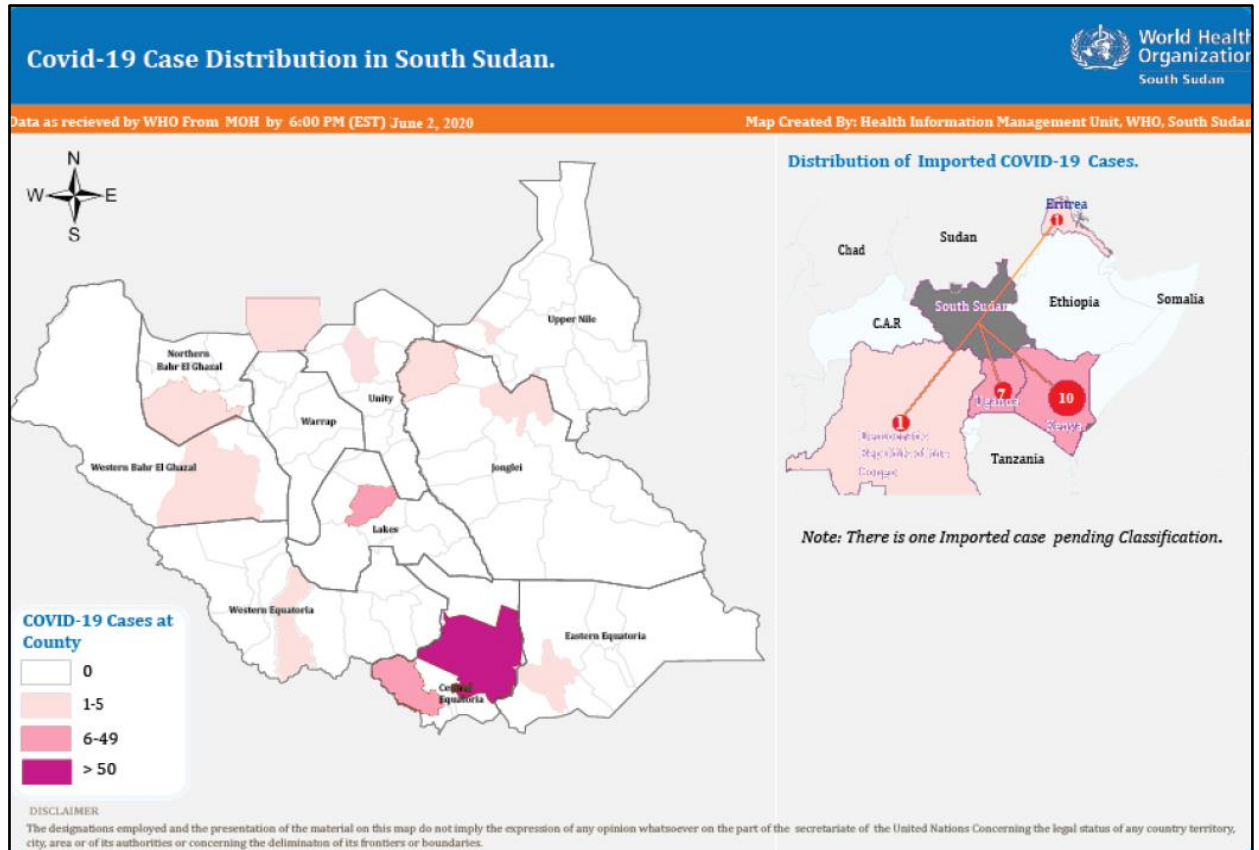
### Performance of the Integrated Disease Surveillance and Response

- In epidemiological week 22 of 2020, both completeness and timeliness of reporting by health facilities was 78%. The Early Warning and Response System (EWARS) reporting sites supported by partners had completeness and timeliness of 75%.
- Malaria (46%), acute respiratory infections (21%), acute watery diarrhea (13%), and acute blood diarrhea (2%) contributed the highest proportionate morbidity in week 22 of 2020
- Malaria remains the leading cause of morbidity and mortality in the country accounting for 46% of all the illnesses and 31% of all the deaths. In week 22, none of the counties reported malaria cases that surpassed their respective weekly threshold.

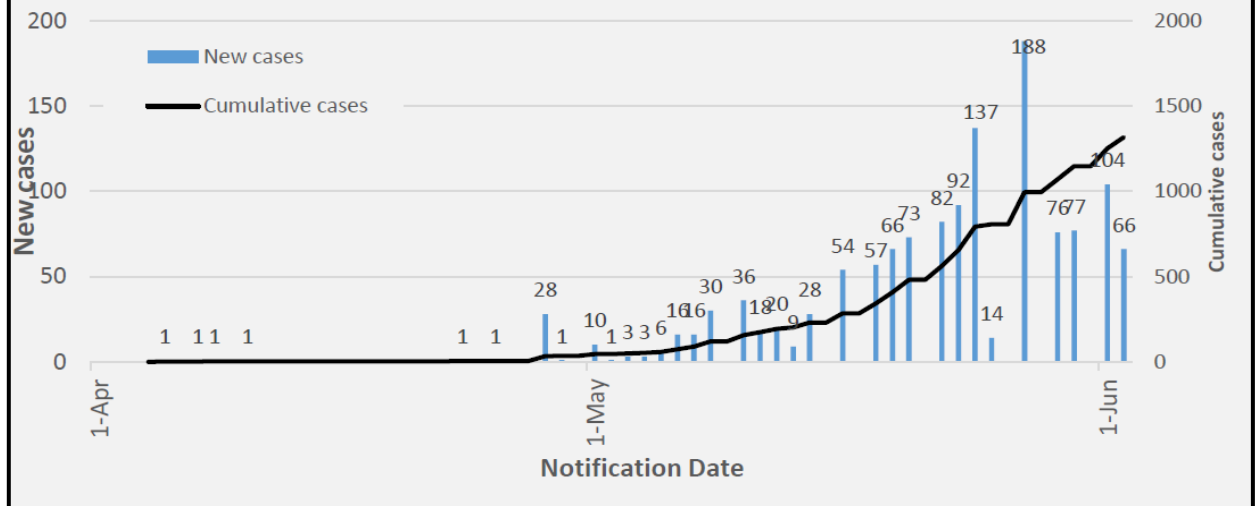
### Coronavirus disease (COVID-19) Outbreak in South Sudan

- Across the country, 1 317 COVID-19 cases, 14 deaths (case fatality rate of 1.1%), and six recoveries have been reported since 5 April 2020.

- There are 24 cases isolated in health facilities in three states including 17 cases in Juba, four in Abyei, and three in Nimule. Over 20 health workers have been reported infected.
- As of 28 May 2020, the National Public Health Laboratory has performed 5 365 tests.
- Out of a cumulative total of 2 489 contacts, 1 071 contacts have completed the 14-day quarantine period while 1 418 contacts are on daily follow up.



**Figure 1. New and cumulative confirmed COVID-19 cases by notification date**



## COVID-19 public health response activities

- Some 356 (88%) alerts out of a cumulative total of 405 alerts have been verified and sampled by the rapid response teams. Most of the alerts are from the Central Equatoria (84%) and Eastern Equatoria States (5%).
- Orientation and cascade training conducted for 57 health workers on 21 May 2020 to facilitate the implementation of active surveillance at health facilities that serve refugee and host communities in Unity, Upper Nile, and the Western Equatoria States.
- A mobile laboratory PCR machine from the East Africa Community (EAC) network of laboratories has been received on 19 May 2020 in the Elegu-Nimule border. The machine will enable testing of the truck drivers at the PoE and avoid the backlog of cargo trucks at the border crossing point once commissioned.
- The Ministry of Health and partners are working on updating of COVID-19 Operational Plan for Case Management that will build the capacity of 10 State Hospitals and 7 prioritized county hospitals for management of severe COVID cases.
- Training of Trainers (ToT) for case management targeting all the states and administrative areas with subsequent cascading of the training to the county levels are expected to begin on 7 June 2020. The training will enhance the capacity of the frontline health workers in the states.

## Ebola Virus Disease in Democratic Republic of the Congo (DRC)

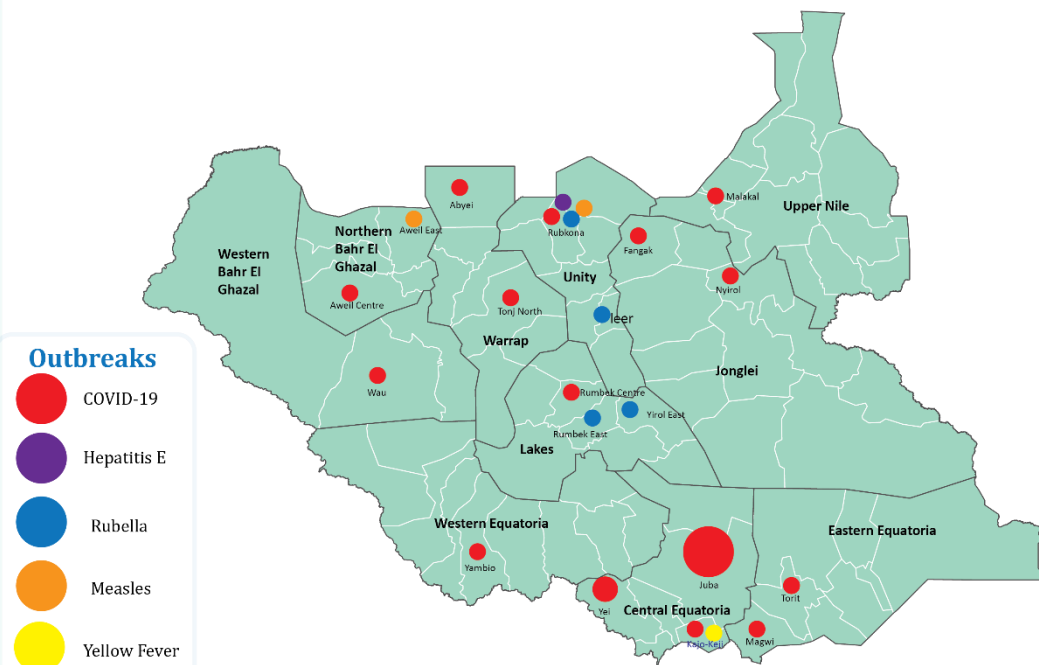
- A new outbreak has been confirmed in Wangata health zone, Mbandaka, in Équateur province of DRC on 1 June 2020. As of 4 June 2020, eight epidemiologically-linked cases, including five confirmed cases, three probable, (four deaths CFR 50%), have been reported. It is likely more people will be identified with the disease as surveillance activities increase. The government has initiated epidemiological investigation and contact through the WHO's support.
- This is the DRC's 11<sup>th</sup> outbreak of Ebola virus disease. The city of Mbandaka and its surrounding area were the sites of DRC's 9<sup>th</sup> Ebola virus outbreak, which took place from May to July 2018.
- The DRC's 10<sup>th</sup> outbreak of Ebola virus disease, in North Kivu, South Kivu and Ituri provinces, is in its final stages. The Ministry of Health began the 42-day countdown to the declaration of the end of the outbreak on 14 May 2020.
- South Sudan and neighboring countries expected to conduct preparedness and readiness assessments and continue with intensified preparedness activities on the border and other high-risk areas.

For more information, please visit: <https://www.who.int/emergencies/diseases/ebola/drc-2019/situation-reports>

## Measles and Rubella Outbreaks

- Three new measles cases have been reported in week 21 in Bentiu PoC where measles caseload is 461 cases now. In Aweil East, a location with an active outbreak, the total number of cases line listed to date is 694 cases with 7 deaths (CFR 1%). WHO is working with the State Ministries of Health and partners to plan and coordinate the activities that will lead to the implementation of measles follow up campaign while adhering to COVID-19 preventive measures and ensuring the safety of the vaccinators in Aweil East

## Map Showing Outbreaks in South Sudan, 2020



**DISCLAIMER**

The designations employed and the presentation of the material on this map do not imply the expression of any opinion whatsoever on the part of the secretariat of the United Nations concerning the legal status of any country territory, city, area or of its authorities or concerning the delimitation of its frontiers or boundaries.

Map Created by:

Health Information Management Unit, WHO South Sudan.

For more details, visit: <https://www.afro.who.int/publications/south-sudan-weekly-disease-surveillance-bulletin-2020>

### Operational gaps and challenges

- Limited resources to cover all the affected counties.
- Weak coordination mechanisms at the sub-national level.
- Insecurity and inaccessibility in conflict-affected counties.
- Huge operational costs measured against available donor funds
- Inadequate human resources for health at subnational levels

### Resource Mobilization

Name of appeal	Required US \$\$	Secured in US \$	A gap in US \$
WHE Operations	<b>22 million</b>	<b>2 million</b>	<b>20 million</b>

### Key Donors

WHO Country Office of South Sudan registers appreciation for the great support provided by all our donors. The donors are listed in alphabetical order.

- Central Emergency Response Fund (CERF)
- European Union Humanitarian Aid (ECHO)
- Global Alliance for Vaccine Initiative (GAVI)
- United States Agency for International Development (USAID)
- The Government of Japan
- The Department for International Development (DFID)
- South Sudan Humanitarian Fund (SSHF)
- World bank



# South Sudan: Bi-Weekly Humanitarian Situation Report

Emergency type: Humanitarian Crises

Issue 09 | Date: 16-- 31 May 2020



World Health  
Organization  
South Sudan

**Editorial Team:** Dr Joseph Wamala, Dr Diba Dulacha, Dr Chol Yur, Ms Sheila Baya, Ms Jemila M. Ebrahim and Mr Atem John

**For more information, please contact**

Dr Olushayo OLU  
WHO Country Representative  
Email: oluo@who.int

Dr Guracha ARGATA  
WHO Health Emergency Team Lead  
Email: guyoa@who.int

Mr Boniface Ambani  
Health Information Management Team  
Lead, Email: ambanib@who.int