

South Sudan

Integrated Disease surveillance and response (IDSR)

Epidemiological Bulletin Week 30 of 2020 (July 20- July 26)





- In week 30, 2020 IDSR reporting completeness was 91% and timeliness was 77% at health facility level. EWARNS reporting completeness was 76% and timeliness was 70%
- Of the 77 alerts in week 30, 2020; 87% were verified 1% were risk assessed and 1% required a response. Malaria (27), AWD (21), ARI (9), measles (4) and bloody diarrhea (11) were the most frequent alerts in week 30, 2020
- Malaria on the rise in all POC sites and is the top cause of morbidity in Bentiu PoC (52%). Bor (34%) & Juba PoC (50%).
- Two suspect cholera deaths were reported in Akiela payam in Pochala and Investigated by the CHD and implementing partners are underway
- A total of 828 COVID-19 alerts have been investigated with 670 (80.9%) being verified. Total of 2286 COVID-19 confirmed cases and 45 deaths, CFR of 2%



SURVEILLANCE PERFORMANCE



For the Integrated Disease Surveillance (IDSR)
network and Early warning alert and response
network (EWARN)



IDSR timeliness & completeness performance at county level for week 30 of 20202



Completeness States Ranking	States	Supporting Partners	Total No. of Functional Health Facilities in the State	No. of HF's Reported on Time	Timeliness Percentage	No. of HF's Reported regardless of Time	Completeness Percentage
1st	Lakes	Doctors with Africa (CUAMM), LIVEWELL	113	102	90%	113	100%
2nd	WES	AMREF, World Vision, CUAMM, CDTY, OPEN	213	209	98%	212	100%
3rd	Warrap	GOAL, CCM, WVI, Malaria Consortium, UNKEA, Save the Children, MSF	119	89	75%	117	98%
4th	CES	HLSS, SSUHA, Healthnet TPO, IHO,GOAL,TRI-SS,THESEO	118	102	86%	115	97%
5th	NBGZ	Malaria Consortium, Healthnet TPO, IRC, CEDS, IHO	130	90	69%	121	93%
6th	Upper Nile	Cordaid, WVI, RI, IMC, NIDO, UNKEA, MC, SSAID	119	79	66%	109	92%
7th	EES	Cordaid, HLSS, CCM	142	82	58%	130	92%
8th	WBGZ	Cordaid, Healthnet TPO, CARE International,IOM	75	64	85%	68	91%
9th	Unity	Cordaid, UNIDOR, IRC, CHADO, CARE International, CRADA, CASS	88	50	57%	64	73%
10th	Jonglei	Nile Hope, MDM, JDF, Livewell, CMD, HFO, EDA, CRADA, Malaria Consortium, CMA	145	102	70%	105	72%
	South Sudan		1262	969	77%	1154	91%

KEY

	<60%	Poor
	61%-79%	Fair
	80%-99%	Good
	100%	Excellent

The timeliness of IDSR reporting (supported by EWARS mobile) at health facility level was 77% and completeness was 91%. All states except Jonglei were above the target of 80% with highest reporting rate in Lakes and WES with completeness of 100%.

IDSR timeliness & completeness performance at county level for week 30 of 2020 (1)



STATE	COUNTY	SUPPORTING PARTNER	Total No. of Functional Health Facilities in the County	No. of HFs Reported on Time	Timeliness Percentage	No. of HFs Reported regardless of time	Completeness Percentage
Lakes	Rumbek North	Doctors with Africa (CUAMM)	7	7	100%	7	100%
Lakes	Awerial	Doctors with Africa (CUAMM)	7	7	100%	7	100%
Lakes	Rumbek Centre	Doctors with Africa (CUAMM)	23	23	100%	23	100%
Lakes	Yirol West	Doctors with Africa (CUAMM)	12	12	100%	12	100%
NBGZ	Aweil South	Malaria Consortium(MC),IHO	9	9	100%	9	100%
CES	Kajo Keji	SSUHA,GOAL,TRI-SS	16	16	100%	16	100%
CES	Morobo	SSUHA,THESO	5	5	100%	5	100%
CES	Terekeka	HealthNetTPO	20	20	100%	20	100%
NBGZ	Aweil North	HealthNetTPO,IHO	33	32	97%	33	100%
Lakes	Rumbek East	Doctors with Africa (CUAMM)	24	23	96%	24	100%
CES	Juba	HLSS	45	43	96%	45	100%
Lakes	Cueibet	Doctors with Africa (CUAMM)	15	14	93%	15	100%
Lakes	Wulu	Doctors with Africa (CUAMM)	14	11	79%	14	100%
Lakes	Yirol East	Doctors with Africa (CUAMM),LIVEWELL	11	5	45%	11	100%
WBGZ	Wau	Cordaid	27	23	85%	26	96%
CES	Yei	SSUHA	17	16	94%	16	94%
NBGZ	Aweil East	IRC,TADO	36	26	72%	34	94%
NBGZ	Aweil Centre	Malaria Consortium(MC)	15	14	93%	14	93%
WBGZ	Raja	HealthNetTPO	14	12	86%	12	86%
WBGZ	Jur River	Cordaid	35	29	83%	30	86%
CES	Lainya	SSUHA	16	2	13%	13	81%
NBGZ	Aweil West	HealthNetTPO	37	9	24%	28	76%

STATE	COUNTY	SUPPORTING PARTNER	Total No. of Functional Health Facilities in the County	No. of HFs Reported on Time	Timeliness Percentage	No. of HFs Reported regardless of time	Completeness Percentage
Unity	Abiemnhom	Cordaid	4	4	100%	4	100%
Unity	Mayom	CASS	9	9	100%	9	100%
WES	Nagero	World Vision International	10	10	100%	10	100%
WES	Mundi West	CUAMM	21	21	100%	21	100%
WES	Maridi	AMREF	26	26	100%	26	100%
WES	Ibba	AMREF	11	11	100%	11	100%
WES	Mundi East	CUAMM	19	19	100%	19	100%
WES	Ezo	World Vision International	27	27	100%	27	100%
WES	Mvolo	CUAMM	11	11	100%	11	100%
WES	Tambura	World Vision International	26	26	100%	26	100%
WES	Yambio	World Vision International	42	40	95%	42	100%
Unity	Panyijar	IRC	15	14	93%	15	100%
WES	Nzara	World Vision International	20	18	90%	19	95%
Unity	Rubkona	Cordaid,IRC,IOM,MSF	15	12	80%	14	93%
Unity	Guit	CHADO	7	0	0%	6	86%
Unity	Pariang	CARE International	11	5	45%	9	82%
Unity	Koch	CRADA,IRC.	5	4	80%	4	80%
Unity	Leer	UNIDOR	11	1	9%	1	9%
Unity	Mayendit	CASS	12	0	0%	0	0%

IDSR timeliness & completeness performance at county level for week 30 of 2020 (2)



STATE	COUNTY	SUPPORTING PARTNER	Total No. of Functional Health Facilities in the County	No. of HFs Reported on Time	Timeliness Percentage	No. of HFs Reported regardless of time	Completeness Percentage
Jonglei	Pochalla	LIVEWELL	7	7	100%	7	100%
Jonglei	Bor	MDM + JDF	35	34	97%	35	100%
EES	Kapoeta South	CCM	10	9	90%	10	100%
Jonglei	Nyiroi	CMA,Malaria Consortium	10	7	70%	10	100%
EES	Budi	Cordaid	21	10	48%	21	100%
EES	Kapoeta North	CCM	16	15	94%	15	94%
Jonglei	Fangak	CMD,HFO	16	14	88%	14	88%
EES	Ikotos	HLSS	27	21	78%	26	96%
EES	Lopa Lafon	HLSS	18	1	6%	14	78%
EES	Magwi	HLSS	22	5	23%	17	77%
Jonglei	Uror	Nile Hope,Malaria Consortium	8	6	75%	6	75%
EES	Kapoeta East	CCM	12	9	75%	9	75%
EES	Torit	Cordaid	20	12	60%	15	75%
Jonglei	Ayod	CMD,EDA	15	11	73%	11	73%
Jonglei	Duk	MDM + JDF	15	10	67%	10	67%
Jonglei	Akobo	NILE HOPE	8	5	63%	5	63%
Jonglei	Twic East	MDM + JDF	11	5	45%	5	45%
Jonglei	Pibor	LIVEWELL,CRADA	3	1	33%	1	33%
Jonglei	Canal Pigi	IMC	11	1	9%	1	9%

STATE	COUNTY	SUPPORTING PARTNER	Total No. of Functional Health Facilities in the County	No. of HFs Reported on Time	Timeliness Percentage	No. of HFs Reported regardless of time	Completeness Percentage
Warrap	Tonj East	CCM	12	12	100%	12	100%
Warrap	Tonj North	CCM	14	14	100%	14	100%
Warrap	Tonj South	CCM	12	12	100%	12	100%
Upper Nile	Melut	WI + RI	8	8	100%	8	100%
Warrap	Gogrial East	GOAL	15	14	93%	15	100%
Upper Nile	Fashoda	CORDAID	13	7	54%	13	100%
Upper Nile	Longechuk	RI	9	4	44%	9	100%
Upper Nile	Makal	IMC	7	2	29%	7	100%
Upper Nile	Akoka	IMC	4	0	0%	4	100%
Warrap	Gogrial West	GOAL	31	25	81%	30	97%
Warrap	Twic	GOAL	26	0	0%	25	96%
Upper Nile	Maban	WI ,RI, Samaritans Purse	17	10	59%	16	94%
Upper Nile	Renk	WI + RI	13	12	92%	12	92%
Warrap	Abyei	AAA,Save the Children,MSF	10	9	90%	9	90%
Upper Nile	Luakpiny Nasir	UNKEA,RI	16	12	75%	14	88%
Upper Nile	Maiwut	RI	5	5	100%	4	80%
Upper Nile	Manyo	CORDAID	10	6	60%	8	80%
Upper Nile	Baliet	IMC	4	0	0%	3	75%
Upper Nile	Ulang	UNKEA,RI	14	3	21%	6	43%
Upper Nile	Panyikang	IMC	4	0	0%	0	0%



Surveillance: EWARS performance indicator by partner for week 30 of 2020

Partner	HF's	Reporting		Performance	
PARTER	# OF SITES	# of reports received on Time	No. of HF's Reported regardless of time	Timeliness	Completeness
Medair	2	2	2	100%	100%
IMC	6	6	6	100%	100%
World Relief	2	2	2	100%	100%
CMD	1	1	1	100%	100%
IRC	1	1	1	100%	100%
RHS	1	1	1	100%	100%
THESO	1	1	1	100%	100%
HFO	1	1	1	100%	100%
GOAL	2	2	2	100%	100%
TRI-SS	2	2	2	100%	100%
MDM	10	10	10	100%	100%
MSF-E	6	4	6	67%	100%
IOM	12	9	10	75%	83%
IMA	9	5	6	56%	67%
MSF-H	5	3	3	60%	60%
UNIDOR	2	0	0	0%	0%
SMC	6	0	0	0%	0%
UNH	2	0	0	0%	0%
TOTAL	71	50	54	70%	76%

Completeness was 76% and timeliness was 70% for weekly reporting in week 30, 2020 for partner-supported clinics serving IDP sites.

EVENT-BASED SURVEILLANCE



Alert management including detection; reporting; verification; risk assessment; & risk characterization





Alert by disease and hubs in week 30 of 2020 [a total of 77 events specific alerts generated by state

State	Acute Respiratory Infections (ARI)	Acute Watery Diarrhoea	AFP	Bloody Diarrhoea	Malaria (Confirmed Measles)	Meningitis	EBS	PoE COVID EVD	Covid-19	Total alerts
CES		3		4		2		1	2	13
EES		3	1	1	4			1		10
Lakes							1			1
Upper Nile	4	1		2	4					11
Warrap		3		1	4					8
WBGZ	1	5			2			1		9
WES	3	5			13	2				23
#N/A	1	1								2
Total alerts	9	21	1	8	27	4	1	3	2	77

In week 30, there were 152 alerts triggered in the system

75 alerts were discarded, 16 are pending verification, 60 under monitoring and 1 in response stage.

During this week:

- 9 ARI alert: all under monitoring
- 21 AWD alert: 3 are undergoing verification and 18 under monitoring
- 8 ABD: 3 are undergoing verification and 5 under Monitoring
- 27 Malaria alerts: 4 are undergoing verification and 23 under monitoring
- 2 Measles alert: 2 undergoing verification and 2 under monitoring
- 3 PoE COVIDEVD alert: 1 undergoing verification and 2 under monitoring
- 2 COVID-19 alert: all undergoing verification
- 1 AFP alert: under monitoring
- 1 Neonatal Tetanus alert: under monitoring
- 1 Meningitis alert: undergoing verification
- 1 EBS alert: in response stage

Suspected Cholera, Pochalla County, Greater Pibor Administrative Area

- On 23rd July 2020, authorities in Pochalla reported two (2) suspect cholera deaths. A verification team from the CHD & LiveWell reported the following findings from Akiella payam.
 - The first suspect case was an old woman that passed away on 13th July 2020 with symptoms of watery diarrhea and no vomiting.
 - Then on 21st July 2020 an old man passed away suffering from bloody diarrhea and no vomiting.
 - No additional suspect cases were identified following the investigations and WHO supported the partners with cholera investigation and treatment kits.
- Akielea payam has no hand pumps, so, the communities use water from the River. Right now, most open water sources are dirty as the flooding has started and has affected the most villages in the payam.
-



SUSPECTED OUTBREAKS



Major suspected outbreaks in South Sudan in
2020



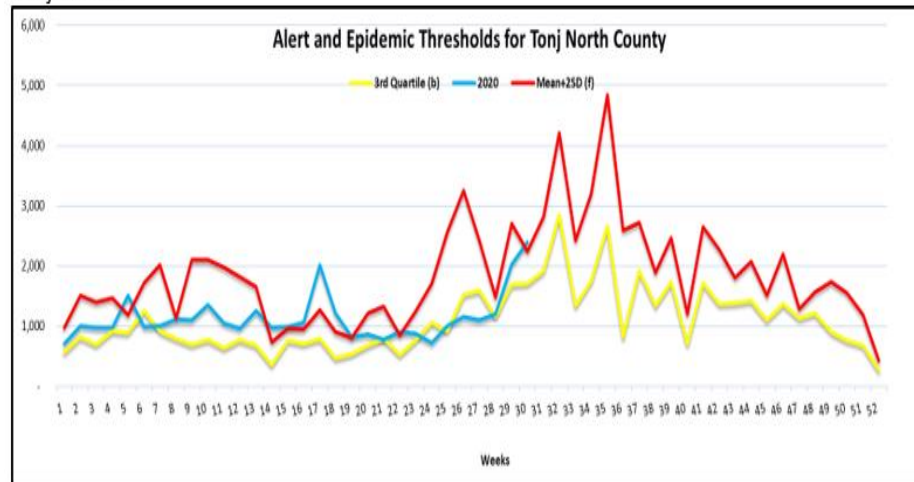


Malaria was the leading cause of morbidity and mortality, accounting for **60%** of all morbidities and **100%** of all mortalities in week 16, 2020

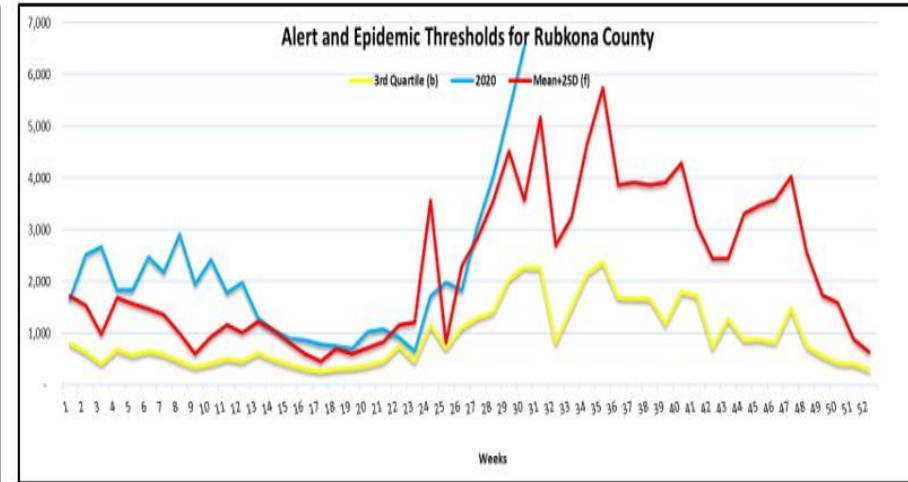
There were 4 Counties with malaria trends that exceeded the threshold (third quartile of trends for the period 2013-2017) and these include the following:

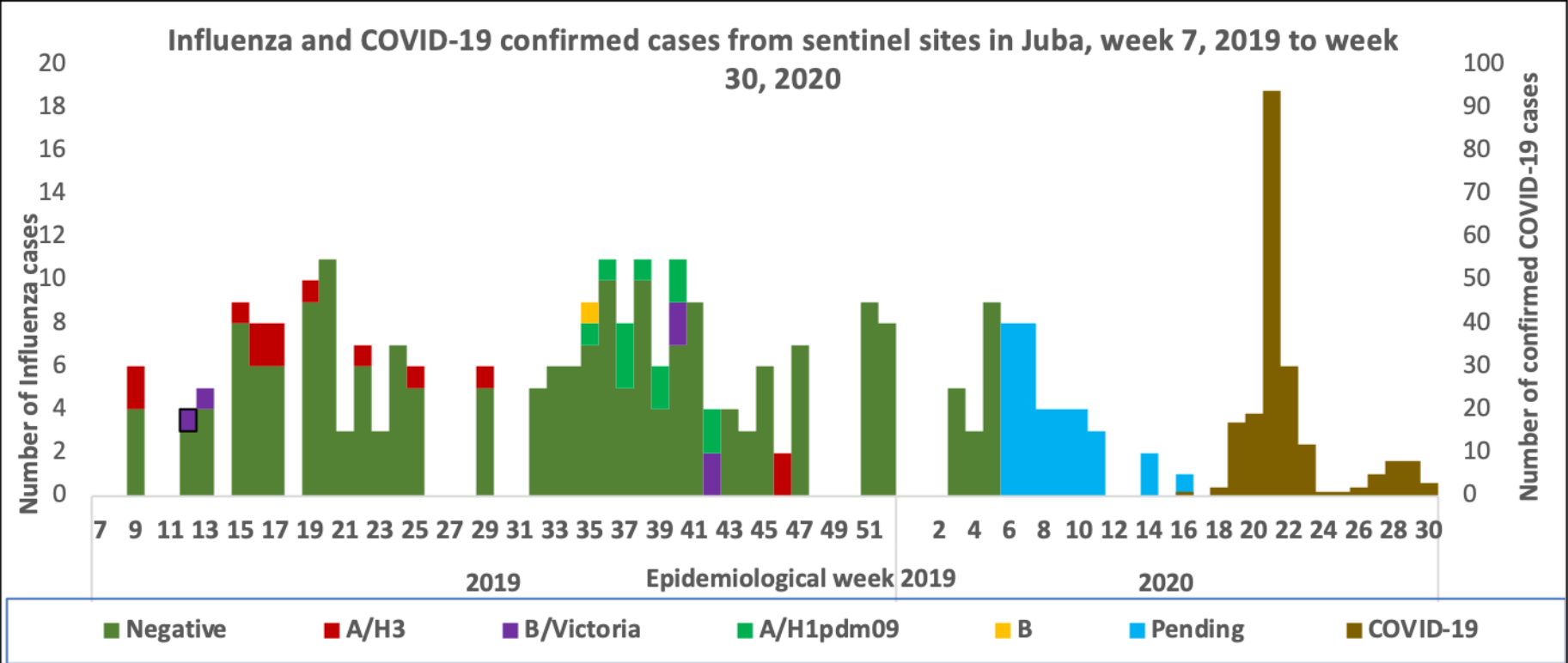
1. Kwajok hub (Tonj North)
2. Bentiu hub (Rubkona)
3. Malakal hub (Melut ,Maban)

Tonj North.



Rubkona.





- In week 7, 2019, South Sudan started case-based surveillance for Influenza Like Illness (ILI) and Severe Acute Respiratory Infection (SARI) cases through systematic collection of epidemiological and virological information.
- There are currently 45 designated sentinel surveillance sites in Juba that are collecting epidemiological data and samples from ILI/SARI cases
- In 2019, a total of 309 ILI/SARI samples have been collected and tested in UVRI 228 being negative; 6 positive for Influenza B (Victoria); 13 positive for Influenza A (H3); and 12 positive for Influenza A (H1)pdm09 and (50) samples are pending test results .
- in week 30 of 2020 the sentinel sites collected 2787 samples and are being tested in country, 2108 samples tested negative for COVID-19, 201 samples tested positive for COVID-19 and 478 samples are pending test results.

ACTIVE OUTBREAKS AND PUBLIC HEALTH EVENTS



Brief epidemiological description and public health response for active outbreaks and public health events





Aetiological agent	Location (county)	Date first reported	New cases since last bulletin	Cumulative cases to date (attack rate %)	Interventions			
					Case management	Vaccination	Health promotion	WASH
Ongoing epidemics								
Hepatitis E	Bentiu PoC	03/01/2018	6	375 (0.016)	Yes	No	Yes	Yes
Measles	Bentiu PoC	24/04/2019	NR	482 (0.006)	Yes	Yes	Yes	N/A





- Measles outbreaks confirmed in 2020

- 6 counties – Tonj East, Magwi, Bor, Kapoeta East, Tonj South and Wau

- Locations with ongoing measles transmission

- Bentiu PoC

- **No new confirmed measles cases**



Measles Outbreak situation & response by county as of week 29, 2020

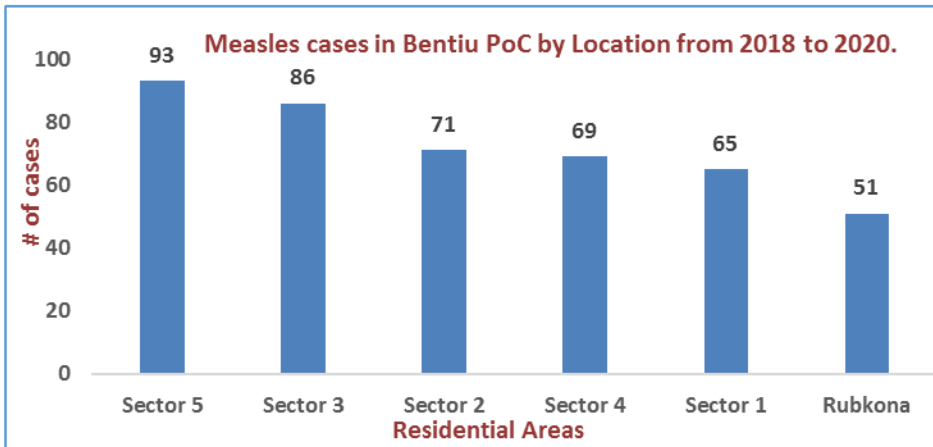
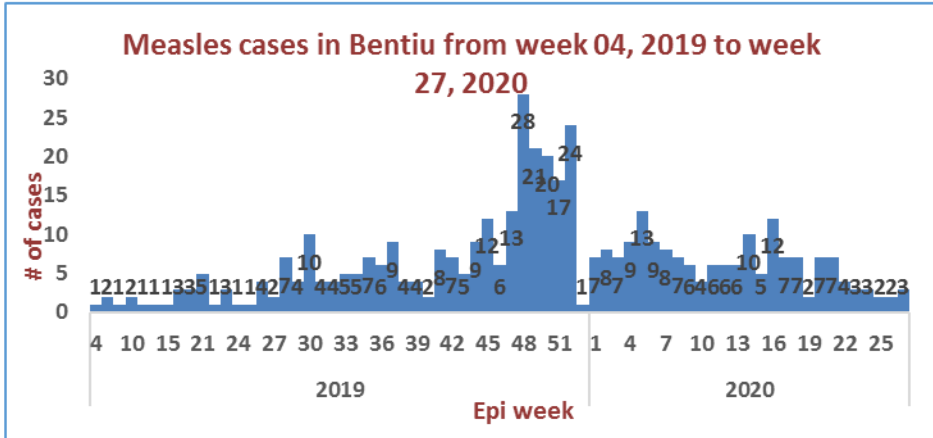


S/N	County	Population	Confirmed cases	Probable cases	Total cases	Cases per 100,000	Total deaths	CFR %	Date first reported	Emergency Campaign	Admin Coverage	Implementing Partner	Status	Comments
1	Tonj East	183,233	13	48	61	33.3	0	0	12-Dec-19	Mass Campaign	Pending result	Mass Campaign	controlled	Mass Campaign Completed
2	Magwi	272,880	5	5	10	3.7	0	0	19-Sep-19	Mass Campaign	Pending result	Mass Campaign	controlled	Mass Campaign Completed
3	Bor	320,956	7	7	14	4.36	0	0	17-Jan-19	Mass Campaign	115.60%	Mass Campaign	controlled	Mass Campaign Completed
4	Kapoeta East	262,720	6	10	16	6.1	0	0	18-Jan-20	Reactive Campaign (Jebel Boma)	Reactive Campaign to start on 26 Feb 2020	IRC	active	Reactive Campaign completed in March 2020
5	Aweil East	519,537	16	469	694	127.8	0	0	02-Jan-20				active	Reactive campaign started on 22 June 2020
6	Bentiu Poc	115,479			455	83	2	2	01-Jan-19	Reactive campaign	126%	IOM	Active	Reactive campaign 20 Jan 2020
7	Wau	271,975	3	0	22	8.1	0	0	14-Jan-20	Enhanced routine immunization	N/A		Active	Enhanced surveillance
Total		1,427,243	50	539	1272	266.36	2	0.23						





Confirmed Measles Outbreak in Bentiu PoC



Age Group	Cases	Percentage	Cum. %
0 - 4 Years	456	95%	95%
5 - 9 Years	14	3%	98%
10 - 14 Years	8	2%	99%
15+ Years	4	1%	100%
Grand Total	482	100%	

Epidemiological description

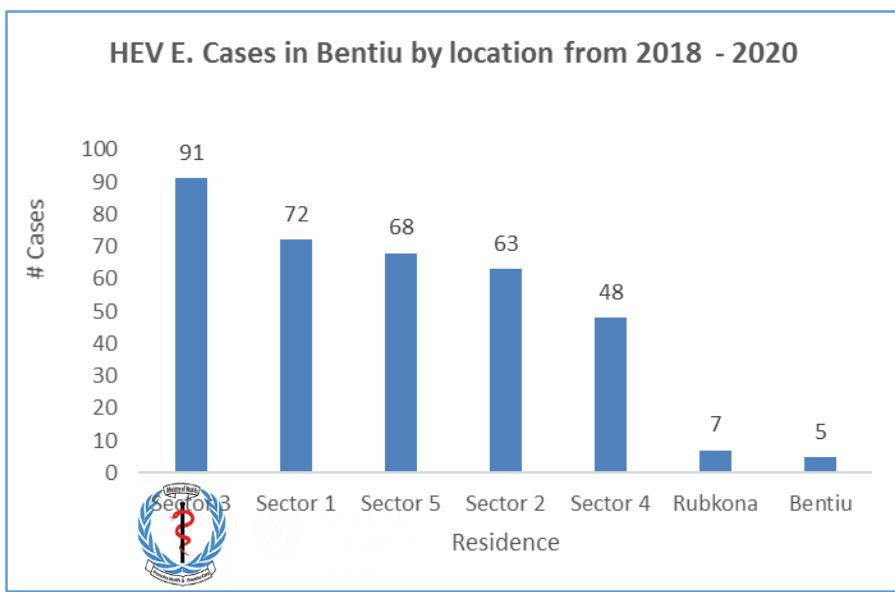
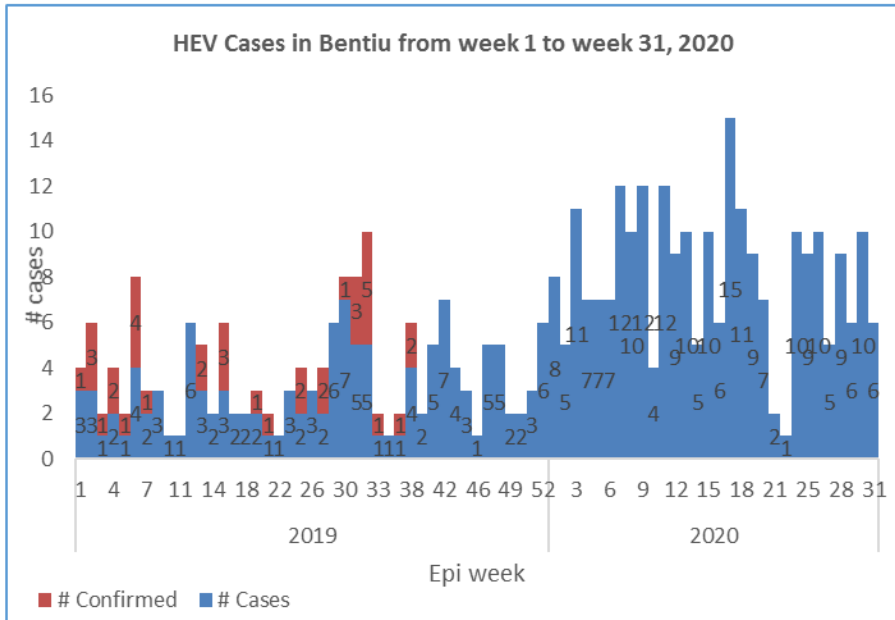
- Bentiu PoC has been reporting suspected measles/rubella cases since week 4 of 2019.
- 3 new cases reported in week 26, 2020
- At least 482 measles cases including 1 death (CFR 0.002%) reported since then.
- Cumulatively, 36 tested cases have tested measles IgM positive while 15 tested rubella IgM positive.
- 47% of cases are female and 53% are male
- 95% are under 5 yrs old, 5% are 5 yrs old and above
- Cases have been reported from inside and outside the PoC with most of the cases originating from the PoC (most cases from sector 5 but generally all the sectors are affected).

Response actions

- Several rounds of reactive campaigns were conducted in Bentiu IOM:
 - IOM completed a reactive campaign in Bentiu POC on 31 May 2019, with 21,285 children 6-59 months and coverage of 126% receiving measles vaccination. PCE was done by MoH & WHO, coverage was 74.6%.
 - Another campaign was conducted by SMOH, IOM and partners which was completed during the week of 20th January 2020 with coverage of 126%.
 - Partners to strengthen routine immunization to continue to collect samples from suspect cases.
 - Measles case management to continue



Hepatitis E, Bentiu PoC (1)



Descriptive epidemiology

- The persistent transmission of HEV in Bentiu PoC continues with 375 cases since beginning of 2019
- There were (6) new cases reported in week 31, 2020
- All the cases were managed as outpatient cases except for seven cases who were admitted
- Two deaths one on 12th, April 2019 and the second on 11th July 2019
- 50% are female and 50% are male.
- Age group less than 15 years had the most cases with (75%) cases.
- At risk of adverse outcomes when infected in the 3rd trimester of pregnancy
- Use of unsafe drinking water likely to be source of infection
- Up to week 29, 2020; there were 375 cases of HEV in Bentiu PoC including 4 deaths (CFR 1.1%)

Age-Group	Alive	Dead	Grand Total	Percentage	CFR	Cum. %2
1 - 4 Years	116	0	116	31%	0%	31%
10 - 14 Years	59	0	59	16%	0%	47%
15+ Years	89	3	92	25%	3%	71%
5 - 9 Years	106	2	108	29%	2%	100%
Grand Total	370	5	375	100%	0.01	

Recommendations

- Supportive case management guided by the HEV protocol is ongoing
- KEV messages on HEV prevention should continue within the community through HPs, CHWs and Kondial Radio
- With current COVID -19 Pandemic Outbreak, WASH partners to increase the coverage of hand washing facilities within the PoCs community.
- Other Wash intervention like increasing the access for clean water and improving the water storage in the affected individuals should be made urgently by distributing the water storage containers that will be the only way to mitigate this problem and stop the HEV outbreak.
- The WASH Cluster/HEV task force should engage in group discussion with Community leaders and woman group at water distribution points to understand their opinions on issue of Collapsing Jerrycans distribution.
- Monitoring the FRC levels at the taps stands in the different sectors, and the concentration of chlorination should maintain at 0.5-1mg/L as the point of collection





Aetiological agent	Location (county)	Date first reported	New cases since last bulletin	Cumulative cases to date (attack rate %)	Interventions			
					Case management	Vaccination	Health promotion	WASH
Controlled epidemics								
Measles	Juba	21/11/2019	NR	6(0.1667)	Yes	No	Yes	N/A
Measles	Tonj East	12/12/2019	NR	61(0.98)	yes	Yes	Yes	N/A
Measles	Bor	17/01/2020	NR	14(0.214)	yes	No	yes	N/A
Measles	Jebel Boma	10/12/2019	NR	96(0.063)	yes	No	Yes	N/A
Measles	Kapoeta East	18/01/2020	NR	16(0.625)	yes	No	Yes	N/A
Measles	Aweil East	29/12/2019	NR	664 (0.127)	Yes		No	Yes



EBOLA VIRUS DISEASE[EVD] PREPAREDNESS IN SOUTH SUDAN



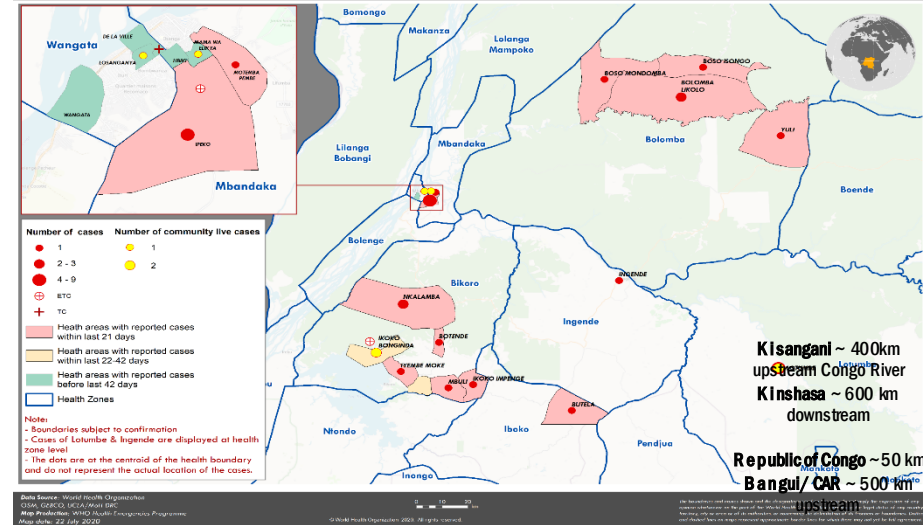
Brief on the Ebola situation in DR Congo and updates on EVD preparedness in South Sudan



Equateur Province – Situation Update reported from 19th - 22nd July

- **5 confirmed cases** reported between the 19th and 22nd July including 5 deaths among confirmed cases.
- Cumulative: **65 cases** (61 confirmed 4 probable) including 29 deaths (CFR; 44.6%). 3 health workers infected, 1 nosocomial infection; 21 survivor discharged to date. In total 22 health areas across 7 HZs are affected.
- **Surveillance:** On 22nd July, 5,485/6,516 (84.2%) active contacts have been seen. Among those unseen (n=198), 44 had travelled, 3 were reluctant for follow up and 53 were lost to follow up. 11 contact became symptomatic. 723 contacts ends follow up.
- **Alerts:** as of 22nd July, 544 alerts were recorded of which 522 (93%) were investigated, 106 were validated and 28 sampled. Active cases finding activities were carried out in 183 HF across 6 HZs from which 187 alerts were investigated and 19 validated

Probable and confirmed EVD cases reported in Equateur province, Democratic Republic of the Congo (data between 01 July 2020 to 21 July 2020)



Coordination: Ongoing work between partners, under the leadership of OCHA, to finalize the consolidated SRP for the outbreak, still seems to be a push from MoH to have a joint EVD/COVID-19 plan, with a stronger emphasis on EVD

POE/POCs, 16 active. 353,492 (92.7% were screened), from which 7/12 alerts were validated

Laboratory: To date 1,683 samples have been analyzed across 3 laboratories in Equateur Province yielding 61 positive samples.

Vaccination: 15,183 have been vaccinated including 1577 FHWs, 4669 high-risk contacts, Vaccine supplies secured for Lotumbé and Ingende HZs.

COVID-19 Update





Situation update as of 30th July 2020

Situation in numbers (by WHO Region)

Total (new cases in last 24 hours)

Globally	16 812 755 cases (253 793)	662 095 deaths (5 999)
Africa	754 390 cases (16 046)	12 838 deaths (319)
Americas	8 980 181 cases (139 657)	346 554 deaths (3 919)
Eastern Mediterranean	1 520 745 cases (13 011)	39 203 deaths (388)
Europe	3 307 388 cases (23 438)	212 079 deaths (460)
South-East Asia	1 949 850 cases (57 794)	43 117 deaths (884)
Western Pacific	299 460 cases (3 847)	8 291 deaths (29)

WHO: <https://www.who.int/health-topics/coronavirus>





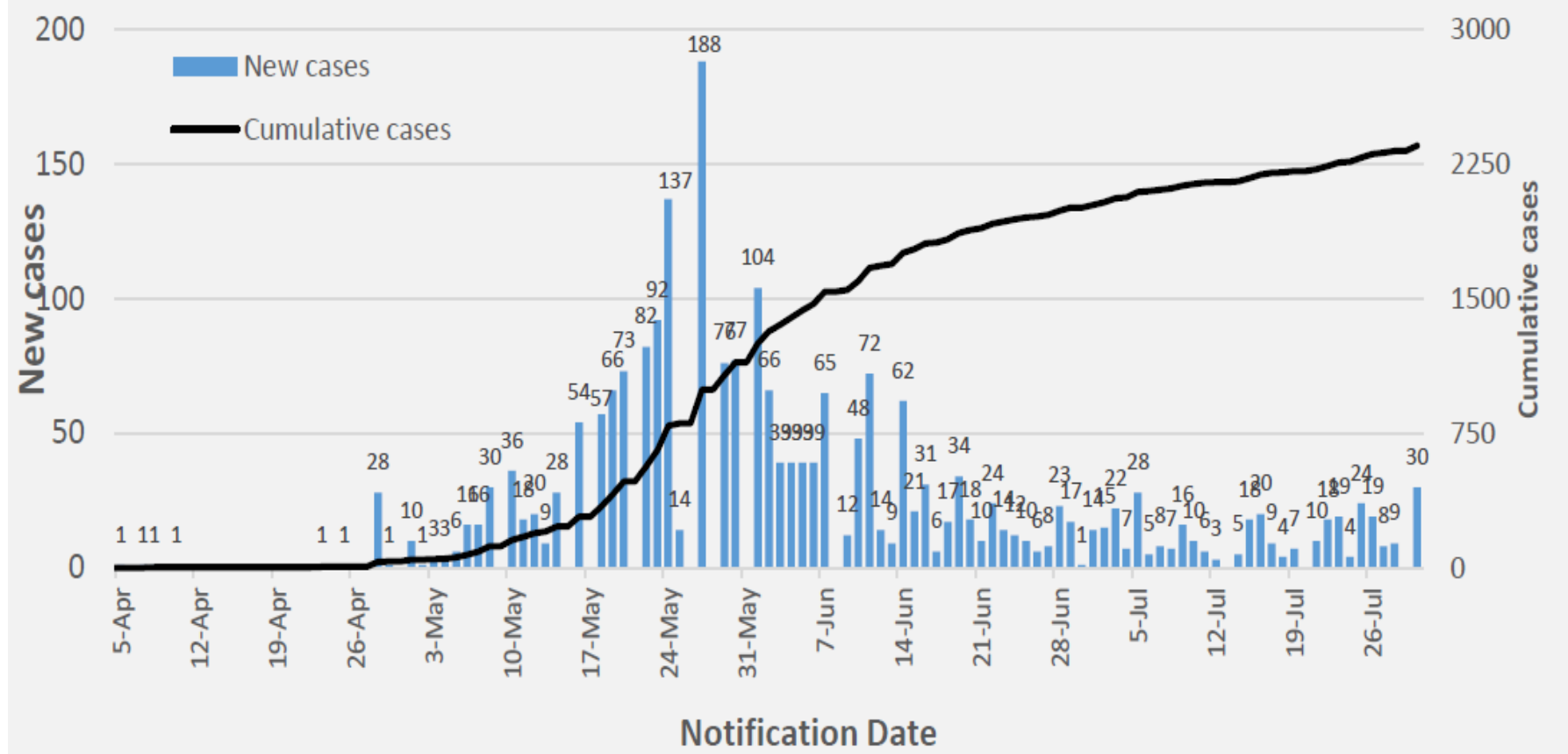
- 2,352 confirmed COVID-19 cases in South Sudan; 85% in Juba with 46 deaths and a case fatality rate (CFR) of 1.9%. Total 6,323 contacts identified, quarantined, & undergoing follow up
- Implementation of priorities; risk communication; active case search and testing; quarantine for contacts; infection prevention and control; and management of cases are currently underway
- The overall response currently led by the COVID-19 high level taskforce and the COVID-19 steering committee





Trends of COVID-19 cases in South Sudan

Figure 1. New and cumulative confirmed COVID-19 cases by notification date

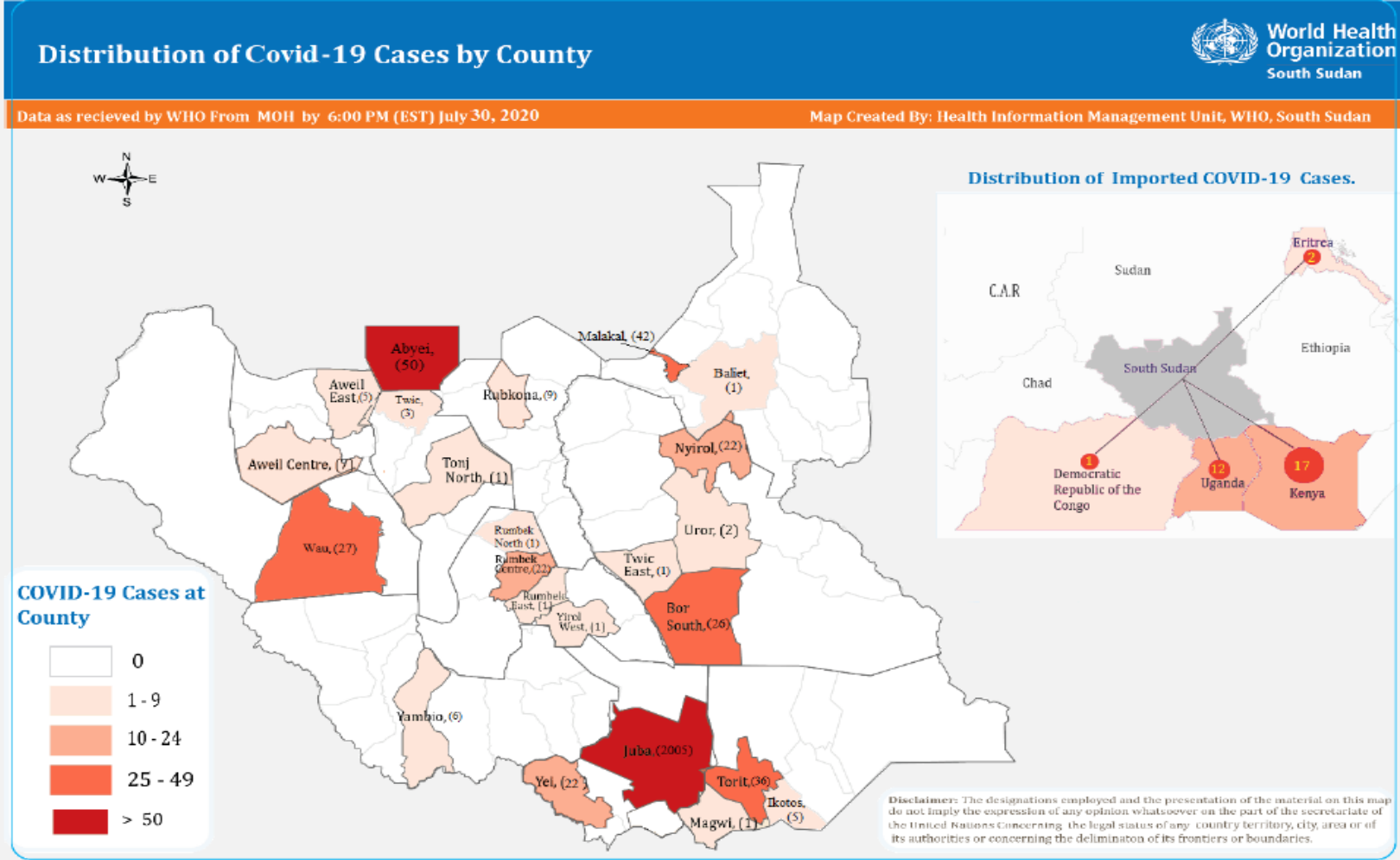


COVID-19 cases increasing exponentially in the past few weeks

Distribution of COVID-19 cases in South Sudan



Figure 3. Distribution of confirmed COVID-19 cases (n=2 328*)



*Geographical information is available for 2 328 cases.

The majority of the cases have been reported in Juba; while the rest have been imported (involving truckdrivers from the neighboring countries)

Overall Conclusions and Recommendations



Conclusion

- The overall IDSR and EWARN reporting performance in week 30, is above the target of 80%. (9) states were above 80%
- 2286 confirmed COVID-19 cases in South Sudan; 85% in Juba with 45 deaths (CFR of 2%). Total 5170 contacts identified, quarantined, & undergoing follow up
- Cumulative total of COVID-19 alerts is 828, of these, 670 (80.9%) have been verified and samples were collected
- With six outbreaks confirmed in 2020; measles remains the most frequent vaccine preventable disease
- There is ongoing measles outbreak in Bentiu PoC
- Given the COVID-19 pandemic, it is critical that measures are stepped up to contain its spread.



Recommendations

- All partners should support CHDs & HF in Upper Nile and other states to improve IDSR/EWARN reporting
- Measles SIAs, routine immunization, surveillance & case management recommended in response to cases in Bentiu PoC.
- Strengthen capacities for COVID-19 containment through identifying and testing suspect cases, isolating confirmed cases, and quarantining contacts



Thanks to the State Surveillance Officers, County Surveillance Officers and Health Facility in-charges for sharing the weekly IDSR data

Thanks to all partners for supporting IDSR weekly reporting and sharing the line lists

To access the IDSR bulletins for 2020 use the link below:

<https://www.afro.who.int/publications/south-sudan-weekly-disease-surveillance-bulletin-2020>



This bulletin is produced by the Ministry of Health with Technical support from WHO

For more help and support, please contact:

Dr. Pinyi Nyimol Mawien
Director General Preventive Health Services
Ministry of Health
Republic of South Sudan
Telephone: +211916285676

Mr. Mathew Tut M. Kol
Director, Emergency Preparedness and Response
Ministry of Health, RSS
Tell: +211916010382, +211922202028
Emails: tut1988@yahoo.com, greensouth2020@gmail.com
Skype: mathew19885

IDSR Bulletin Editorial Team

1. Mr. Ajak Ater, MoH - Email: ajakater014@gmail.com
2. Ms. Sheila Baya, WHO- Email: bayas@who.int
3. Mr. Robert Lasu Martin, WHO -Email: lasur@who.int
4. Mrs. Rose Dagama , WHO - Email: dagamaa@who.int
5. Dr. Abraham Adut, WHO- Email: abenegoa@who.int
6. Dr. Alice Igale Lado, WHO - Email: ladua@who.int
7. Dr. Joseph Wamala, WHO - Email: wamalaj@who.int
8. Dr. Argata Guracha Guyo, WHO - Email: guyo@who.int

Notes

WHO and the Ministry of Health gratefully acknowledge the surveillance officers [at state, county, and health facility levels], health cluster and health pooled fund (HPF) partners who have reported the data used in this bulletin. We would also like to thank ECHO and USAID for providing financial support.

The data has been collected with support from the EWARS project. This is an initiative to strengthen early warning, alert and response in emergencies. It includes an online, desktop and mobile application that can be rapidly configured and deployed in the field. It is designed with frontline users in mind, and built to work in difficult and remote operating environments. This bulletin has been automatically published from the EWARS application.

More information can be found at <http://ewars-project.org>

