

# South Sudan

**Integrated Disease surveillance and response (IDSR)**

**Epidemiological Bulletin Week 33 of 2020 (August 10-  
August 16)**



World Health  
Organization  
South Sudan



- In week 33, 2020 IDSR reporting completeness was 92% and timeliness was 68% at health facility level. EWARN reporting completeness and timeliness were 69%
- Of the 99 alerts in week 33, 2020; 68% were verified 1% were risk assessed and 0% required a response. Malaria (39), AWD (40), ARI (8), measles (0) and bloody diarrhea (15) were the most frequent alerts in week 33, 2020
- Malaria remains the top cause of morbidity and accounted for 80,712 cases (61.2% of OPD cases)
- A total of 1006 COVID-19 alerts have been investigated with 831 (82.6%) being verified. Total of 2494 COVID-19 confirmed cases and 47 deaths, CFR of 1.9%

# SURVEILLANCE PERFORMANCE



For the Integrated Disease Surveillance (IDSR)  
network and Early warning alert and response  
network (EWARN)



# IDSR timeliness & completeness performance at county level for week 33 of 2020



Completeness States Ranking	States	Supporting Partners	Total No. of Functional Health Facilities in the State	No. of HFs Reported on Time	Timeliness Percentage	No. of HFs Reported regardless of Time	Completeness Percentage
5th	WES	AMREF, World Vision, CUAMM, CDTY, OPEN	213	162	76%	213	100%
1st	Lakes	Doctors with Africa (CUAMM), LIVEWELL	113	68	60%	113	100%
9th	CES	HLSS, SSUHA, Healthnet TPO, IHO, GOAL, TRI-SS, THESO	118	116	98%	116	98%
2nd	NBGZ	Malaria Consortium, Healthnet TPO, IRC, CEDS, IHO	130	105	81%	126	97%
4th	WBGZ	Cordaid, Healthnet TPO, CARE International, IOM	75	39	52%	72	96%
7th	Warrap	GOAL, CCM, WVI, Malaria Consortium, UNKEA, Save the Children, MSF	119	97	82%	111	93%
8th	EES	Cordaid, HLSS, CCM	142	96	68%	132	93%
10th	Upper Nile	Cordaid, WVI, RI, IMC, NIDO, UNKEA, MC, SSAID	119	85	71%	108	91%
3rd	Unity	Cordaid, UNIDOR, IRC, CHADO, CARE International, CRADA, CASS	88	68	77%	78	89%
6th	Jonglei	Nile Hope, MDM, JDF, Livewell, CMD, HFO, EDA, CRADA, Malaria Consortium, CMA	102	93	91%	71	70%
	South Sudan		1219	929	76%	1140	94%

## KEY

	<60%	Poor
	61%-79%	Fair
	80%-99%	Good
	100%	Excellent

The timeliness of IDSR reporting (supported by EWARS mobile) at health facility level was 76% and completeness was 94%. All states except Jonglei were above the target of 80% with highest reporting rate in Lakes and WES with completeness of 100%.

# IDSR timeliness & completeness performance at county level for week 33 of 2020 (1)



STATE	COUNTY	SUPPORTING PARTNER	Total No. of Functional Health Facilities in the County	No. of HFs Reported on Time	Timeliness Percentage	No. of HFs Reported regardless of time	Completeness Percentage
Lakes	Aerial	Doctors with Africa (CUAMM)	7	7	100%	7	100%
NBGZ	Aweil South	Malaria Consortium(MC),IHO	9	9	100%	9	100%
NBGZ	Aweil North	HealthNet TPO,IHO	33	33	100%	33	100%
CES	Kajo Keji	SSUHA,GOAL,TRI-SS	16	16	100%	16	100%
CES	Juba	HLSS	46	46	100%	46	100%
CES	Yei	SSUHA	17	17	100%	17	100%
CES	Terekeka	HealthNetTPO	20	20	100%	20	100%
Lakes	Rumbek Centre	Doctors with Africa (CUAMM)	23	22	96%	23	100%
Lakes	Cueibet	Doctors with Africa (CUAMM)	15	14	93%	15	100%
Lakes	Wulu	Doctors with Africa (CUAMM)	14	13	93%	14	100%
WBGZ	Wau	Cordaid	28	26	93%	28	100%
Lakes	Rumbek North	Doctors with Africa (CUAMM)	7	6	86%	7	100%
Lakes	Yirol East	Doctors with Africa (CUAMM),LIVEWELL	11	5	45%	11	100%
WBGZ	Raja	HealthNetTPO	12	2	17%	12	100%
Lakes	Rumbek East	Doctors with Africa (CUAMM)	24	1	4%	24	100%
Lakes	Yirol West	Doctors with Africa (CUAMM)	12	0	0%	12	100%
NBGZ	Aweil East	IRC,TADO	36	29	81%	35	97%
NBGZ	Aweil West	HealthNetTPO	37	21	57%	35	95%
NBGZ	Aweil Centre	Malaria Consortium(MC)	15	13	87%	14	93%
WBGZ	Jur River	Cordaid	35	11	31%	32	91%
CES	Lainya	SSUHA	14	12	86%	12	86%
CES	Morobo	SSUHA,THESO	6	5	83%	5	83%

STATE	COUNTY	SUPPORTING PARTNER	Total No. of Functional Health Facilities in the County	No. of HFs Reported on Time	Timeliness Percentage	No. of HFs Reported regardless of time	Completeness Percentage
WES	Ibba	AMREF	11	11	100%	11	100%
Unity	Rubkona	Cordaid,IRC,IOM,M SF	14	14	100%	14	100%
Unity	Mayendit	CASS	12	12	100%	12	100%
WES	Nzara	World Vision International	20	20	100%	20	100%
WES	Nagero	World Vision International	10	10	100%	10	100%
WES	Mundri West	CUAMM	21	21	100%	21	100%
WES	Mundri East	CUAMM	19	19	100%	19	100%
WES	Mvolo	CUAMM	11	11	100%	11	100%
Unity	Mayom	CASS	9	8	89%	9	100%
Unity	Panyijjar	IRC	15	13	87%	15	100%
Unity	Abiemnhom	Cordaid	4	3	75%	4	100%
Unity	Pariang	CARE International	11	8	73%	11	100%
WES	Ezo	World Vision International	27	18	67%	27	100%
WES	Yambio	World Vision International	42	19	45%	42	100%
WES	Tambura	World Vision International	26	8	31%	26	100%
WES	Maridi	AMREF	26	25	96%	25	96%
Unity	Guit	CHADO	7	4	57%	6	86%
Unity	Koch	CRADA,IRC.	4	2	50%	3	75%
Unity	Leer	UNIDOR	11	4	36%	4	36%

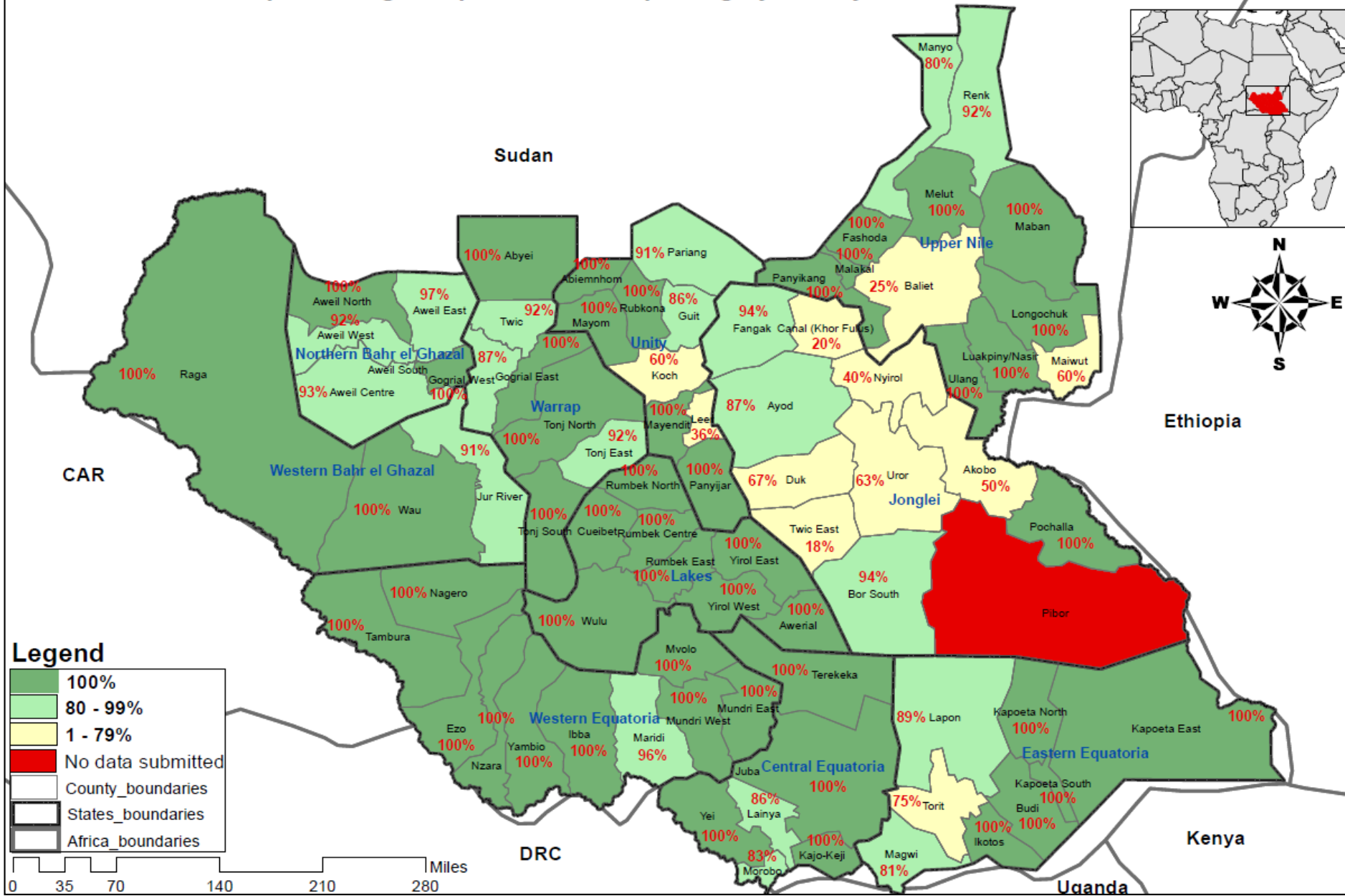
# IDSR timeliness & completeness performance at county level for week 33 of 2020 (2)



STATE	COUNTY	SUPPORTING PARTNER	Total No. of Functional Health Facilities in the County	No. of HFs Reported on Time	Timeliness Percentage	No. of HFs Reported regardless of time	Completeness Percentage
Jonglei	Uror	Nile Hope,Malaria Consortium	2	2	100%	2	100%
Jonglei	Akobo	NILE HOPE	3	3	100%	3	100%
Jonglei	Bor	MDM + JDF	24	24	100%	24	100%
Jonglei	Pochalla	LIVEWELL	7	7	100%	7	100%
EES	Kapoeta North	CCM	15	15	100%	15	100%
EES	Kapoeta South	CCM	10	9	90%	10	100%
EES	Ikotos	HLSS	27	19	70%	27	100%
EES	Budi	Cordaid	21	13	62%	21	100%
EES	Kapoeta East	CCM	10	3	30%	10	100%
Jonglei	Duk	MDM + JDF	11	10	91%	10	91%
EES	Lopa Lafon	HLSS	18	8	44%	16	89%
EES	Magwi	HLSS	21	15	71%	18	86%
Jonglei	Fangak	CMD,HFO	17	14	82%	14	82%
Jonglei	Ayod	CMD,EDA	15	12	80%	12	80%
EES	Torit	Cordaid	20	14	70%	15	75%
Jonglei	Nyiroi	CMA,Malaria Consortium	8	4	50%	4	50%
Jonglei	Twic East	MDM + JDF	8	2	25%	2	25%
Jonglei	Canal Pigi	IMC	5	1	20%	1	20%
Jonglei	Pibor	LIVEWELL,CRADA	2	0	0%	0	0%

STATE	COUNTY	SUPPORTING PARTNER	Total No. of Functional Health Facilities in the County	No. of HFs Reported on Time	Timeliness Percentage	No. of HFs Reported regardless of time	Completeness Percentage
Warrap	Tonj North	CCM	14	14	100%	14	100%
Warrap	Tonj South	CCM	12	12	100%	12	100%
Upper Nile	Maban	WVI + RI	17	16	94%	17	100%
Upper Nile	Fashoda	CORDAID	13	12	92%	13	100%
Upper Nile	Melut	WVI + RI	8	7	88%	8	100%
Upper Nile	Longechuk	RI	9	7	78%	9	100%
Warrap	Gogrial East	GOAL	15	4	27%	15	100%
Upper Nile	Makal	IMC	7	1	14%	7	100%
Upper Nile	Panyikang	IMC	4	0	0%	4	100%
Upper Nile	Luakpiny Nasir	UNKEA,RI	16	13	81%	15	94%
Upper Nile	Renk	WVI + RI	13	12	92%	12	92%
Warrap	Tonj East	CCM	12	11	92%	11	92%
Warrap	Twic	GOAL	25	22	88%	23	92%
Warrap	Abyei	AAA,Save the Children,MSF	10	9	90%	9	90%
Warrap	Gogrial West	GOAL	31	25	81%	27	87%
Upper Nile	Manyo	CORDAID	10	6	60%	8	80%
Upper Nile	Maiwut	RI	5	3	60%	4	80%
Upper Nile	Akoka	IMC	5	0	0%	4	80%
Upper Nile	Ulang	UNKEA,RI	15	7	47%	6	40%
Upper Nile	Baliet	IMC	4	1	25%	1	25%

Map showing completeness of reporting by county in week 33, 2020.





# Surveillance: EWARS performance indicator by partner for week 33 of 2020

Partner	HF's	Reporting		Performance	
PARTER	# OF SITES	# of reports received on Time	No. of HF's Reported regardless of time	Timeliness	Completeness
Medair	2	2	2	100%	100%
World Relief	2	2	2	100%	100%
CMD	1	1	1	100%	100%
IRC	1	1	1	100%	100%
THESO	1	1	1	100%	100%
GOAL	2	2	2	100%	100%
TRI-SS	2	2	2	100%	100%
HFO	1	1	1	100%	100%
IMC	6	6	6	100%	100%
MSF-E	6	6	6	100%	100%
RHS	1	1	1	100%	100%
IOM	12	12	12	100%	100%
IMA	9	9	9	100%	100%
MDM	10	9	9	90%	90%
SMC	1	0	1	0%	100%
MSF-H	5	1	1	20%	20%
<b>TOTAL</b>	<b>62</b>	<b>56</b>	<b>57</b>	<b>90%</b>	<b>92%</b>

Completeness was 92% and timeliness was 90% for weekly reporting in week 33, 2020 for partner-supported clinics serving IDP sites.



# EVENT-BASED SURVEILLANCE



Alert management including detection; reporting; verification; risk assessment; & risk characterization





State	Acute Respiratory Infections (ARI)	Acute Watery Diarrhoea	Bloody Diarrhoea	Malaria (Confirmed)	Covid-19	Total alerts
CES		9	1	2		12
EES		8	5	3		16
Upper Nile	1	5	5	2	1	14
Warrap		2			1	3
WBGZ	1	3	2	4	1	11
WES		13	2	28		43
<b>Total alerts</b>	<b>2</b>	<b>40</b>	<b>15</b>	<b>39</b>	<b>3</b>	<b>99</b>

### During this week:

2 ARI alert: Investigation has been done and they are been monitored.

40 AWD alert: 23 are undergoing verification and 17 under monitoring

15 ABD: 3 are undergoing verification and 12 under Monitoring

39 Malaria alerts:25 are undergoing verification and 14 under monitoring

1 Measles alert: County RRT investigated and the case is under monitoring.

3 PoE COVID EVD alert: Team investigated the cases and collected sample.

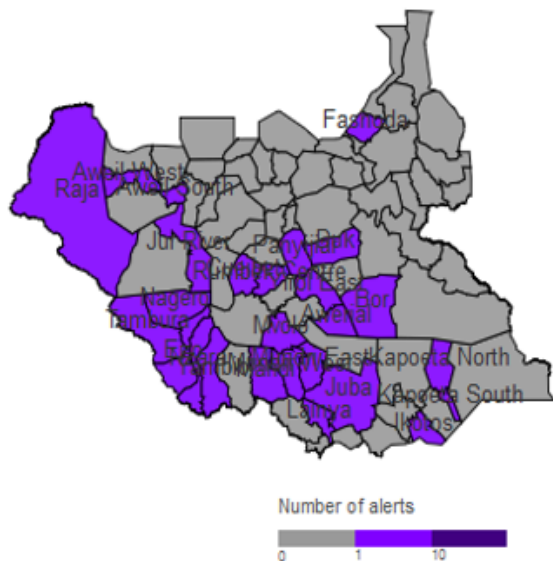
4 COVID-19 alert: Investigation done and sample collected.

1 EBS alert: is undergoing investigation

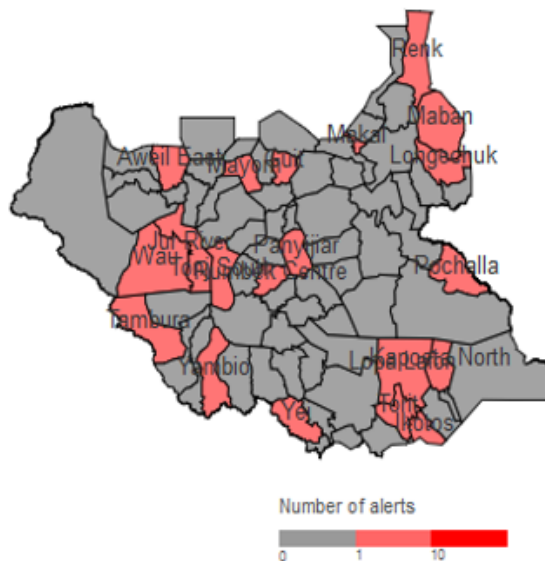
# Alert: Map of key disease alerts by county of week 33 of 2020



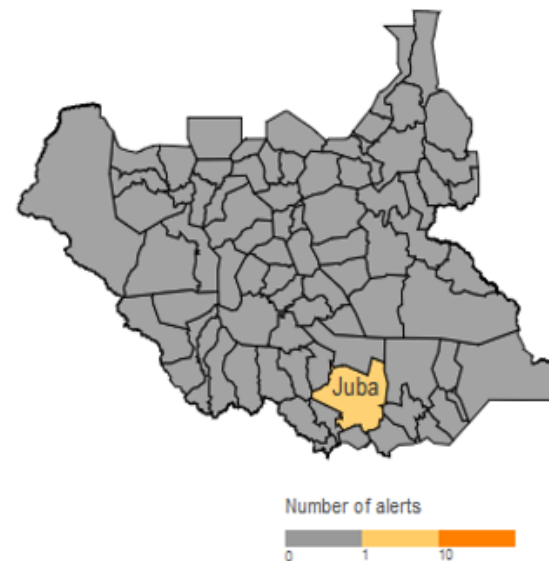
Map 2a | Malaria (W33 2020)



Map 2b | Bloody diarrhoea (W33 2020)



Map 2c | Measles (W33 2020)



W33	Cumulative (2020)	
0	11	Low risk
4	4	Medium risk
0	27	High risk
1	54	Very high risk
68%	78%	% verified
0%	0%	% auto-discarded
1%	1%	% risk assessed
0%	1%	% requiring a response

# SUSPECTED OUTBREAKS



Major suspected outbreaks in South Sudan in  
2020



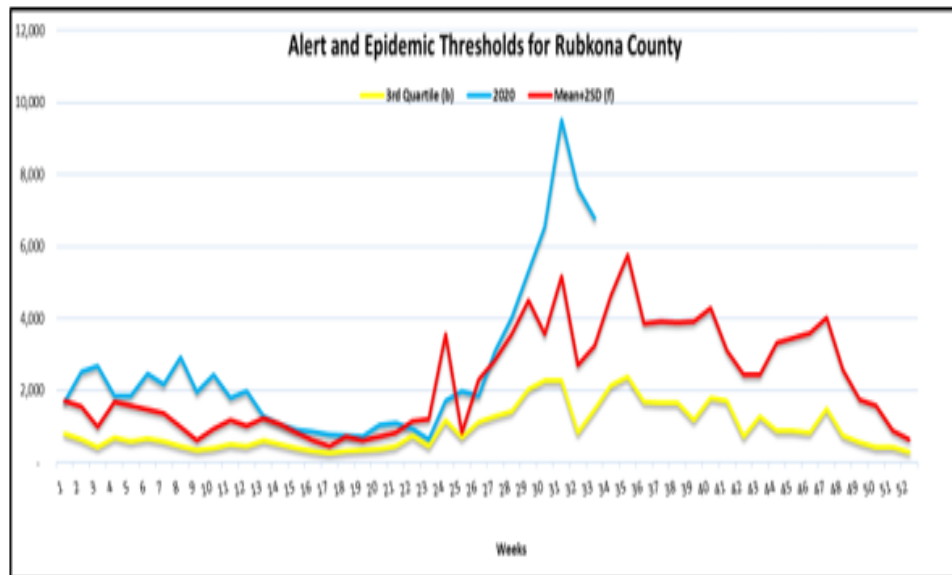


Malaria was the leading cause of morbidity and mortality, accounting for **61.2%** of all morbidities and **6.0%** of all mortalities this week.

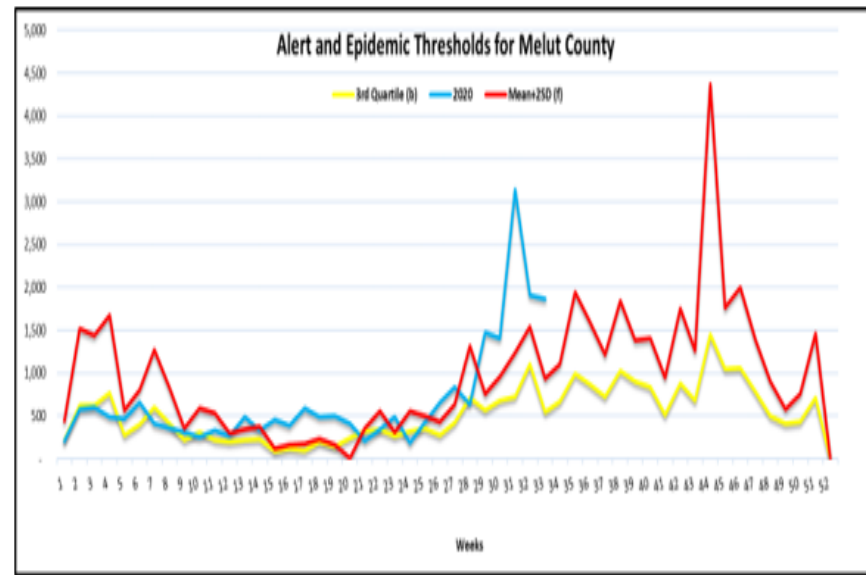
There were **4 Counties** with malaria trends that exceeded the threshold (third quartile of trends for the period 2013-2017) and these include the following: Juba hub (Juba); Bentiu hub (Rubkona); Malakal hub (Melut); Kuajok hub (Twic Mayardit)

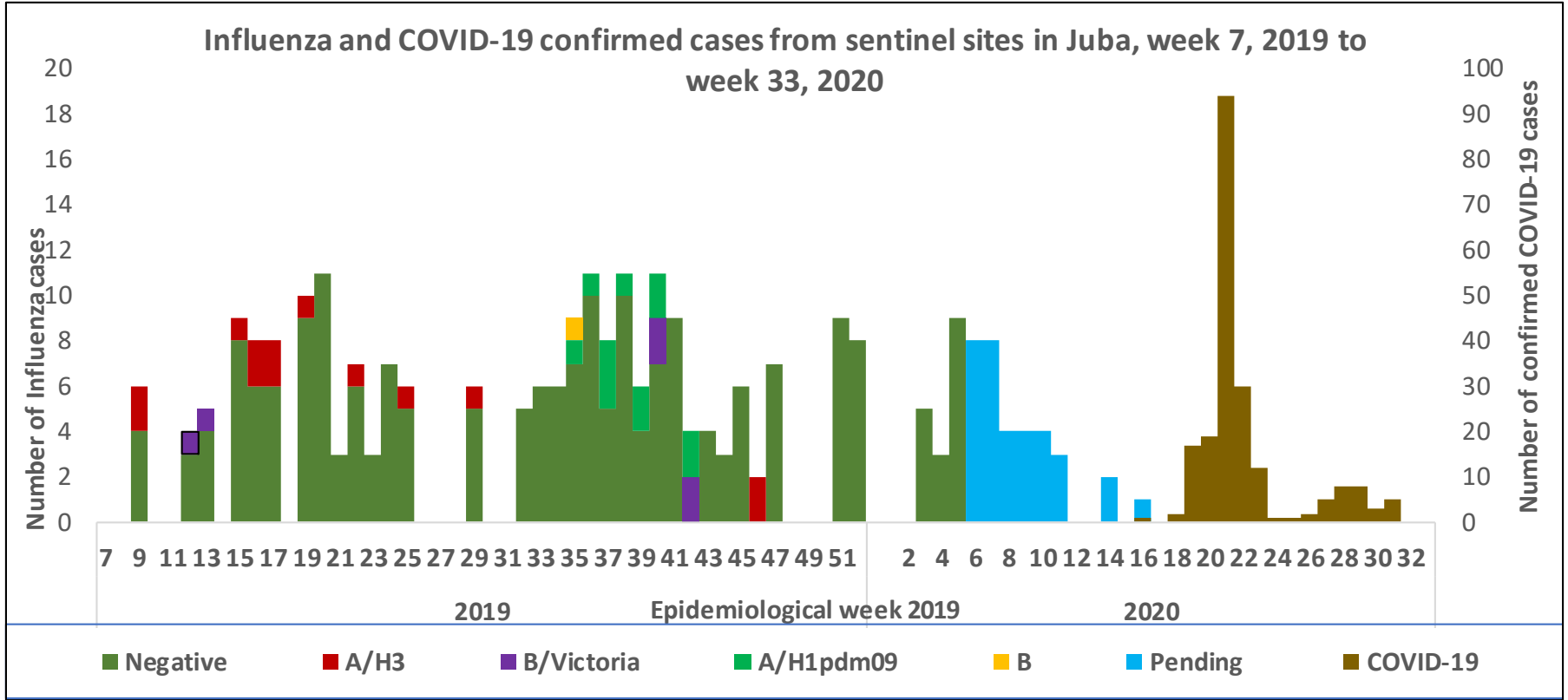
**In the PoC sites**; malaria is the top cause of morbidity in Bentiu (53%); Juba (48%), and Bor (38%). In Wau and Malakal PoCs, malaria accounts for 19% and 32% of OPD consultations, respectively.

## Rubkona



## Melut





- In week 7, 2019, South Sudan started case-based surveillance for Influenza Like Illness (ILI) and Severe Acute Respiratory Infection (SARI) cases through systematic collection of epidemiological and virological information.
- In 2019, a total of 309 ILI/SARI samples were collected and tested in UVRI 228 being negative; 6 positive for Influenza B (Victoria); 13 positive for Influenza A (H3); and 12 positive for Influenza A (H1)pdm09 and (50) samples are pending test results .
- There are currently 20 Covid-19 designated sentinel surveillance sites in Juba that are collecting epidemiological data and samples from ILI/SARI cases. . A total of 3288 samples have been collected in 2020 with 206 (6.2%) being positive for COVID-19 in Juba. These sentinel samples have not been tested for influenza in 2020

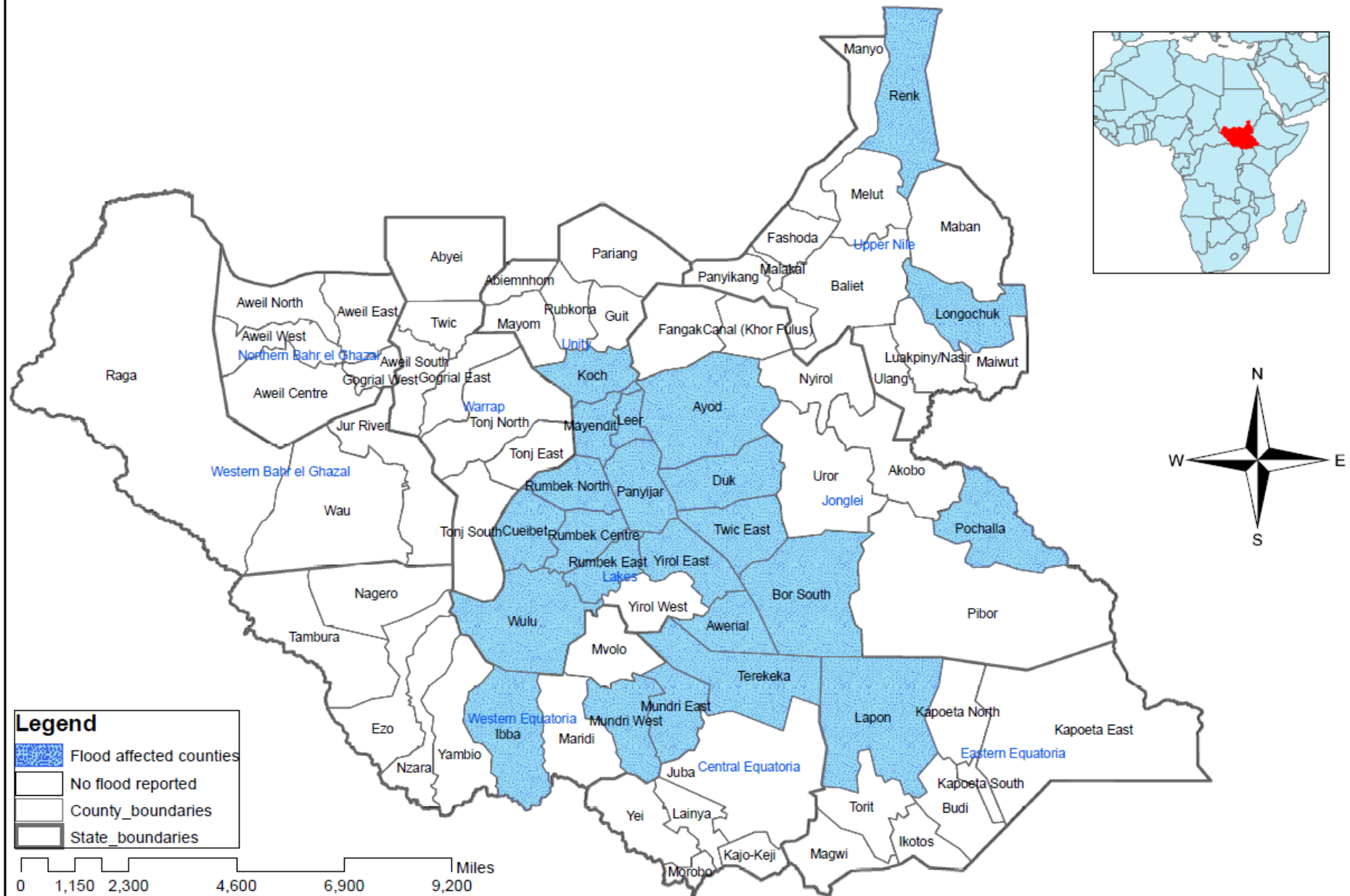
# ACTIVE OUTBREAKS AND PUBLIC HEALTH EVENTS



Brief epidemiological description and public health response for active outbreaks and public health events



# Map showing the flood affected counties in south sudan July - August, 2020.



Disclaimer: The boundaries and names shown and the designations used on this map do not imply the expression of any opinion whatsoever on the part of the World Health Organization concerning the legal status of any country, territory, city or area or of its authorities, or concerning the delimitation of its frontiers or boundaries.





## Flooding, South Sudan, week 33, 2020

- **48,908 Household Affected**
- **200,000 individuals affected**

### Description

With the prediction of more than expected rains during the rainy season of 2020, an increasing number of locations continue to be affected by floods since July 2020. Over 600,000 people in 24 counties have been displaced by floods resulting from heavy rains and overflowing rivers after their banks and dykes gave way. Health facilities are flooded or cannot be accessed by populations in some locations and access to safe water is constrained with the risk of waterborne diseases in affected locations.

### Public health response

- The Government, supported by partners have undertaken initial rapid needs assessments to identify and support with the the emergency humanitarian needs
- Emergency medicines have been deployed to Bor, Pibor, and lakes, where most of the affected populations have been reported.
- A Ministry of health and WHO rapid response teams have been deployed to support emergency health needs assessments and provision of essential health services to the displaced population through mobile health and vaccination clinics.



Aetiological agent	Location (county)	Date first reported	New cases since last bulletin	Cumulative cases to date (attack rate %)	Interventions			
					Case management	Vaccination	Health promotion	WASH
<b>Ongoing epidemics</b>								
Hepatitis E	Bentiu PoC	03/01/2018	6	375 (0.016)	Yes	No	Yes	Yes
Measles	Bentiu PoC	24/04/2019	NR	482 (0.006)	Yes	Yes	Yes	N/A





- Measles outbreaks confirmed in 2020

- 6 counties – Tonj East, Magwi, Bor, Kapoeta East, Tonj South and Wau

- Locations with ongoing measles transmission

- Bentiu PoC

- **No new confirmed measles cases**



# Measles Outbreak situation & response by county as of week 33, 2020

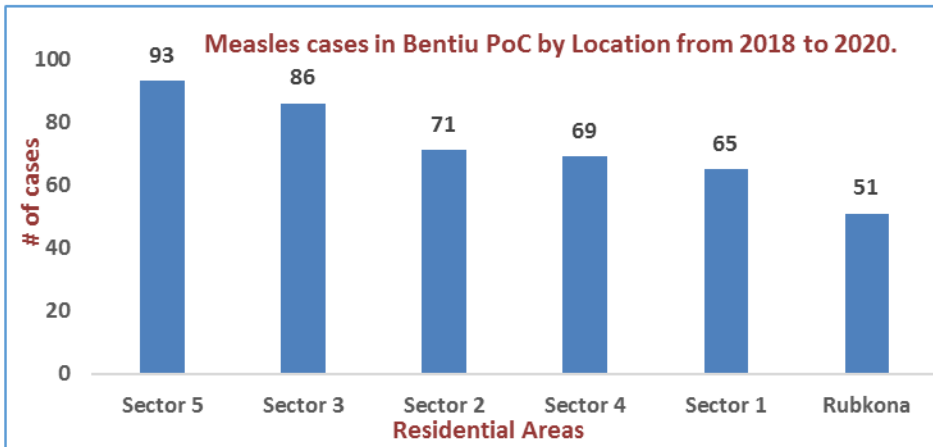
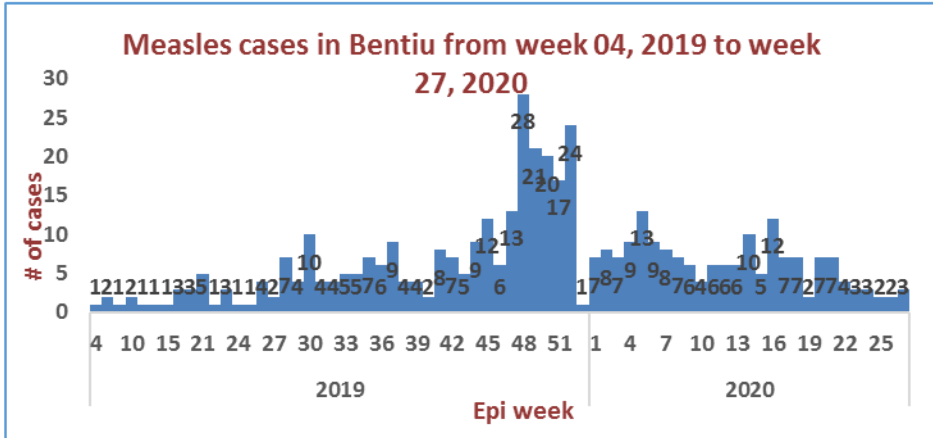


S/N	County	Population	Confirmed cases	Probable cases	Total cases	Cases per 100,000	Total deaths	CFR %	Date first reported	Emergency Campaign	Admin Coverage	Implementing Partner	Status	Comments
1	Tonj East	183,233	13	48	61	33.3	0	0	12-Dec-19	Mass Campaign	Pending result	Mass Campaign	controlled	Mass Campaign Completed
2	Magwi	272,880	5	5	10	3.7	0	0	19-Sep-19	Mass Campaign	Pending result	Mass Campaign	controlled	Mass Campaign Completed
3	Bor	320,956	7	7	14	4.36	0	0	17-Jan-19	Mass Campaign	115.60%	Mass Campaign	controlled	Mass Campaign Completed
4	Kapoeta East	262,720	6	10	16	6.1	0	0	18-Jan-20	Reactive Campaign (Jebel Boma)	Reactive Campaign to start on 26 Feb 2020	IRC	active	Reactive Campaign completed in March 2020
5	Aweil East	519,537	16	469	694	127.8	0	0	02-Jan-20				active	Reactive campaign started on 22 June 2020
6	Bentiu Poc	115,479			455	83	2	2	01-Jan-19	Reactive campaign	126%	IOM	Active	Reactive campaign 20 Jan 2020
7	Wau	271,975	3	0	22	8.1	0	0	14-Jan-20	Enhanced routine immunization	N/A		Active	Enhanced surveillance
<b>Total</b>		<b>1,427,243</b>	<b>50</b>	<b>539</b>	<b>1272</b>	<b>266.36</b>	<b>2</b>	<b>0.23</b>						





## Confirmed Measles Outbreak in Bentiu PoC



Age Group	Cases	Percentage	Cum. %
0 - 4 Years	456	95%	95%
5 - 9 Years	14	3%	98%
10 - 14 Years	8	2%	99%
15+ Years	4	1%	100%
<b>Grand Total</b>	<b>482</b>	<b>100%</b>	

**Epidemiological description**

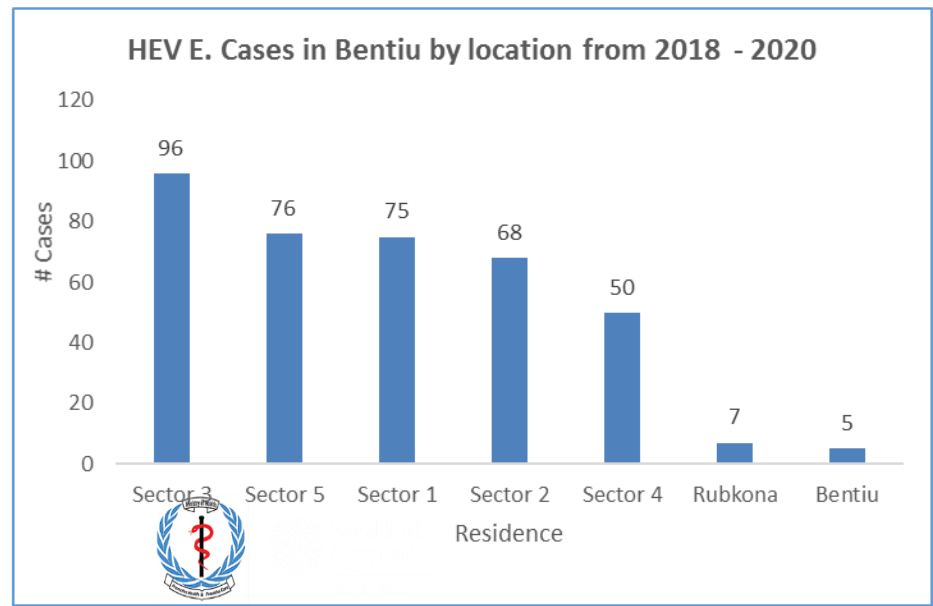
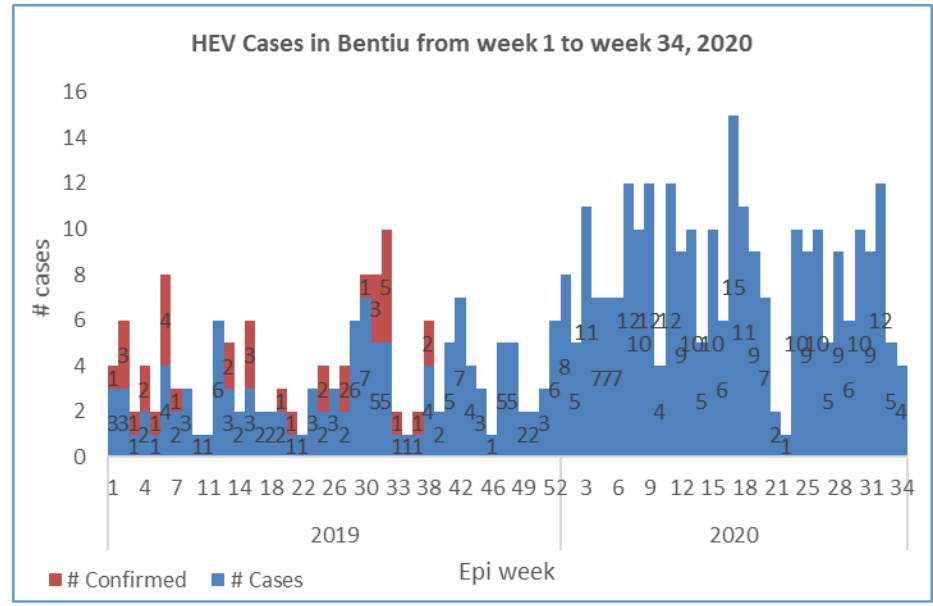
- Bentiu PoC has been reporting suspected measles/rubella cases since week 4 of 2019.
- 3 new cases reported in week 26, 2020
- At least 482 measles cases including 1 death (CFR 0.002%) reported since then.
- Cumulatively, 36 tested cases have tested measles IgM positive while 15 tested rubella IgM positive.
- 47% of cases are female and 53% are male
- 95% are under 5 yrs old, 5% are 5 yrs old and above
- Cases have been reported from inside and outside the PoC with most of the cases originating from the PoC (most cases from sector 5 but generally all the sectors are affected).

**Response actions**

- Several rounds of reactive campaigns were conducted in Bentiu IOM:
  - IOM completed a reactive campaign in Bentiu POC on 31 May 2019, with 21,285 children 6-59 months and coverage of 126% receiving measles vaccination. PCE was done by MoH & WHO, coverage was 74.6%.
  - Another campaign was conducted by SMOH, IOM and partners which was completed during the week of 20th January 2020 with coverage of 126%.
  - Partners to strengthen routine immunization to continue to collect samples from suspect cases.
  - Measles case management to continue



## Hepatitis E, Bentiu PoC (1)



### Descriptive epidemiology

- The persistent transmission of HEV in Bentiu PoC continues with 399 cases since beginning of 2019
- There were (4) new cases reported in week 34, 2020
- All the cases were managed as outpatient cases except for seven cases who were admitted
- Two deaths one on 12th, April 2019 and the second on 11th July 2019
- 50% are female and 50% are male.
- Age group less than 15 years had the most cases with (75%) cases.
- At risk of adverse outcomes when infected in the 3rd trimester of pregnancy
- Use of unsafe drinking water likely to be source of infection
- Up to week 34, 2020; there were 399 cases of HEV in Bentiu PoC including 4 deaths (CFR 0.01%)

Age-Group	Alive	Dead	Grand Total	Percentage	CFR	Cum. %2
1 - 4 Years	126	0	126	32%	0%	32%
10 - 14 Years	61	0	61	15%	0%	47%
15+ Years	96	3	99	25%	3%	72%
5 - 9 Years	111	2	113	28%	2%	100%
<b>Grand Total</b>	<b>394</b>	<b>5</b>	<b>399</b>	<b>100%</b>	<b>0.01</b>	



## Recommendations

- Supportive case management guided by the HEV protocol is ongoing
- KEV messages on HEV prevention should continue within the community through HPs, CHWs and Kondial Radio
- With current COVID -19 Pandemic Outbreak, WASH partners to increase the coverage of hand washing facilities within the PoCs community.
- Other Wash intervention like increasing the access for clean water and improving the water storage in the affected individuals should be made urgently by distributing the water storage containers that will be the only way to mitigate this problem and stop the HEV outbreak.
- The WASH Cluster/HEV task force should engage in group discussion with Community leaders and woman group at water distribution points to understand their opinions on issue of Collapsing Jerrycans distribution.
- Monitoring the FRC levels at the taps stands in the different sectors, and the concentration of chlorination should maintain at 0.5-1mg/L as the point of collection





Aetiological agent	Location (county)	Date first reported	New cases since last bulletin	Cumulative cases to date (attack rate %)	Interventions			
					Case management	Vaccination	Health promotion	WASH
<b>Controlled epidemics</b>								
Measles	Juba	21/11/2019	NR	6( 0.1667)	Yes	No	Yes	N/A
Measles	Tonj East	12/12/2019	NR	61(0.98)	yes	Yes	Yes	N/A
Measles	Bor	17/01/2020	NR	14(0.214)	yes	No	yes	N/A
Measles	Jebel Boma	10/12/2019	NR	96(0.063)	yes	No	Yes	N/A
Measles	Kapoeta East	18/01/2020	NR	16(0.625)	yes	No	Yes	N/A
Measles	Aweil East	29/12/2019	NR	664 (0.127)	Yes		No	Yes





# EBOLA VIRUS DISEASE[EVD] PREPAREDNESS IN SOUTH SUDAN



Brief on the Ebola situation in DR Congo and updates on EVD preparedness in South Sudan



# EVD DRC Update 10<sup>th</sup> August in Equateur Province

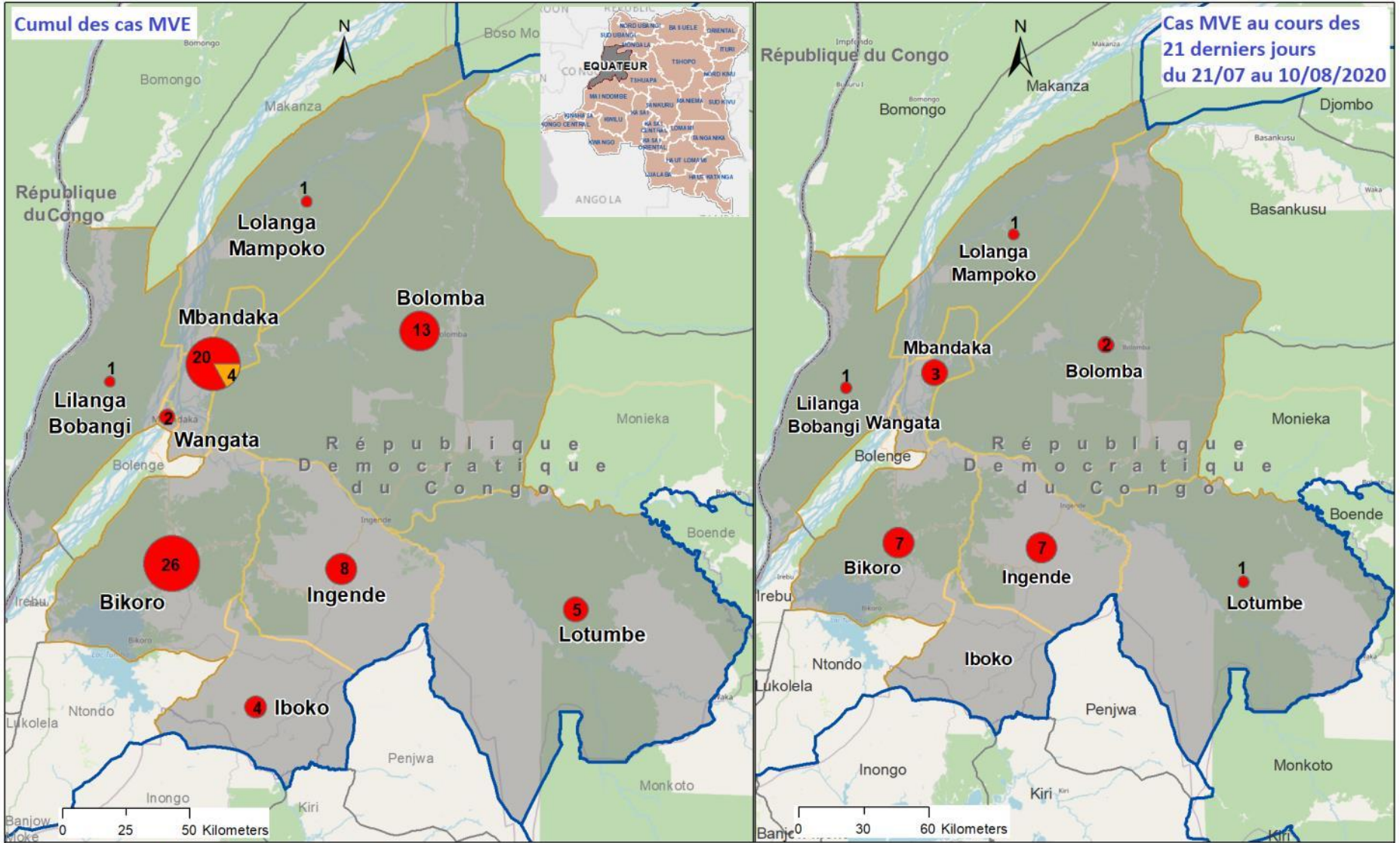
## Summary of figures

- 4 cases reported (0 confirmed, 4 probable)
- 36 deaths (42.9%)
- 36 recoveries
- 29 health areas affected across 9 Zs
- 21,069 vaccinated
- In past 21 days (21 July – 10<sup>th</sup> Aug). 22 confirmed cases notified across 15/29 health areas in 7/9 Zs

## Highlights for 10<sup>th</sup> August 2020

- 0 new cases reported
- 0 new deaths. 1 confirmed case under treatment in T ;
- 2 new recoveries discharged in bandaka:
- 5. % contacts followed in the past 24 hours:
- 96. % alerts investigated in the past 24 hours.

# Distribution of confirmed and probable cases of Ebola virus disease in Equateur province, as of 10 Aug, 2020 (n = 84)



# COVID-19 Updates

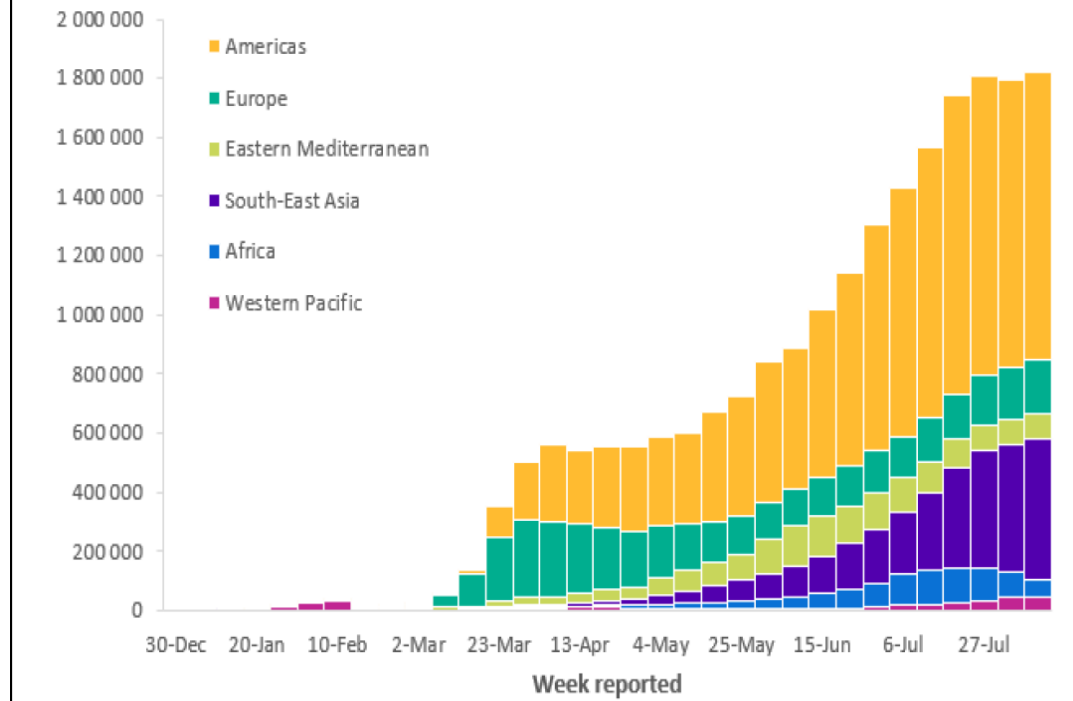




Situation update as of 16<sup>th</sup> August 2020

- The COVID-19 pandemic initial cases were detected in Wuhan China
- Globally >23 million cases (> 761 000 deaths)
- Africa > 1 million cases (>18 476 deaths)

Figure 1: Number of COVID-19 cases reported weekly by WHO region, 30 December to 16 August 2020\*\*



WHO: <https://www.who.int/health-topics/coronavirus>



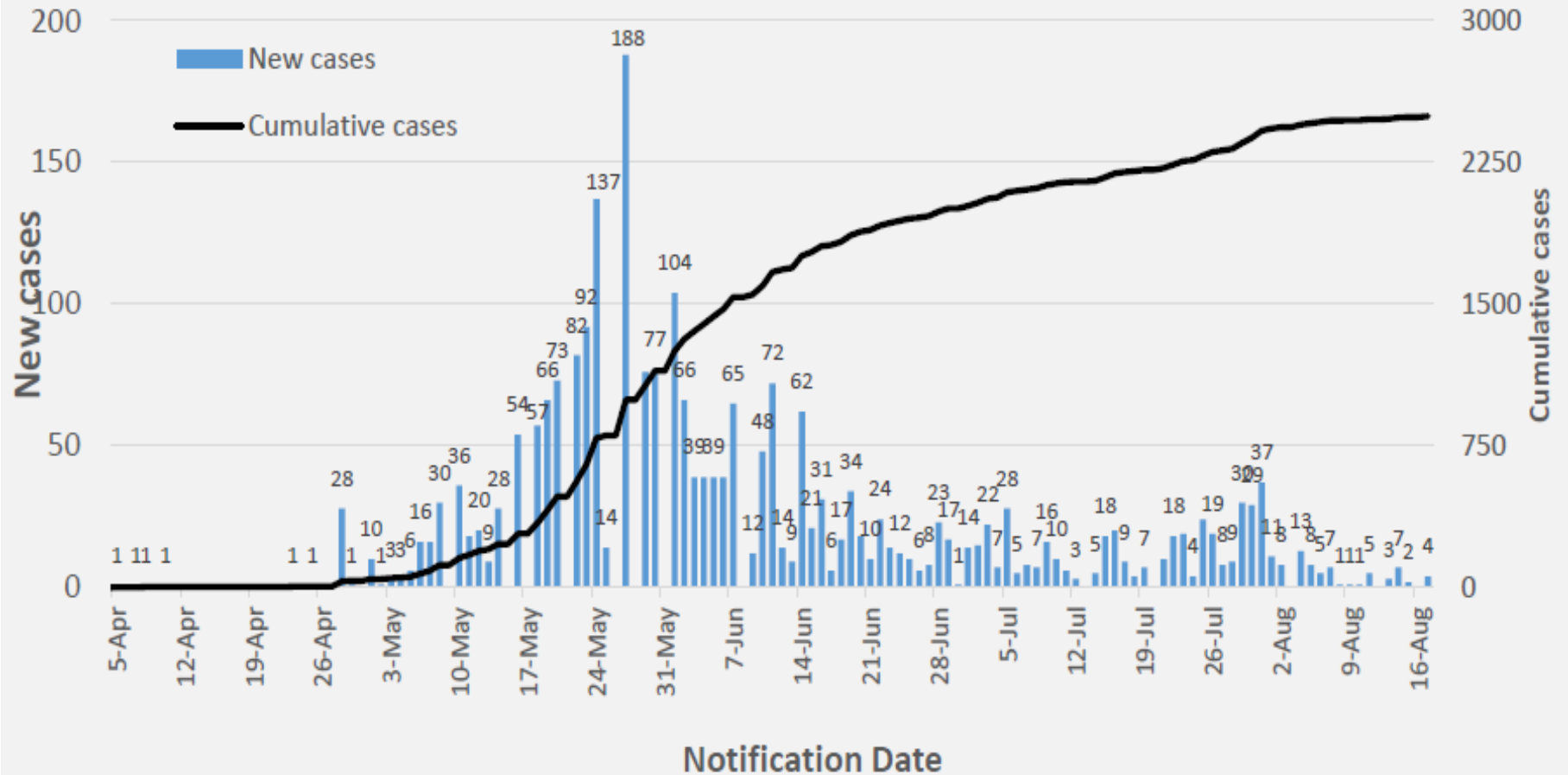
- 2,494 confirmed COVID-19 cases in South Sudan; 85% in Juba with 47 deaths and a case fatality rate (CFR) of 1.9%. Total 7,945 contacts identified, quarantined, & undergoing follow up
- Implementation of priorities; risk communication and community engagement; active case search and testing; quarantine for contacts; isolation of confirmed cases, infection prevention and control; and management of cases are currently underway
- The overall response currently led by the COVID-19 National level taskforce and the COVID-19 National Steering Committee





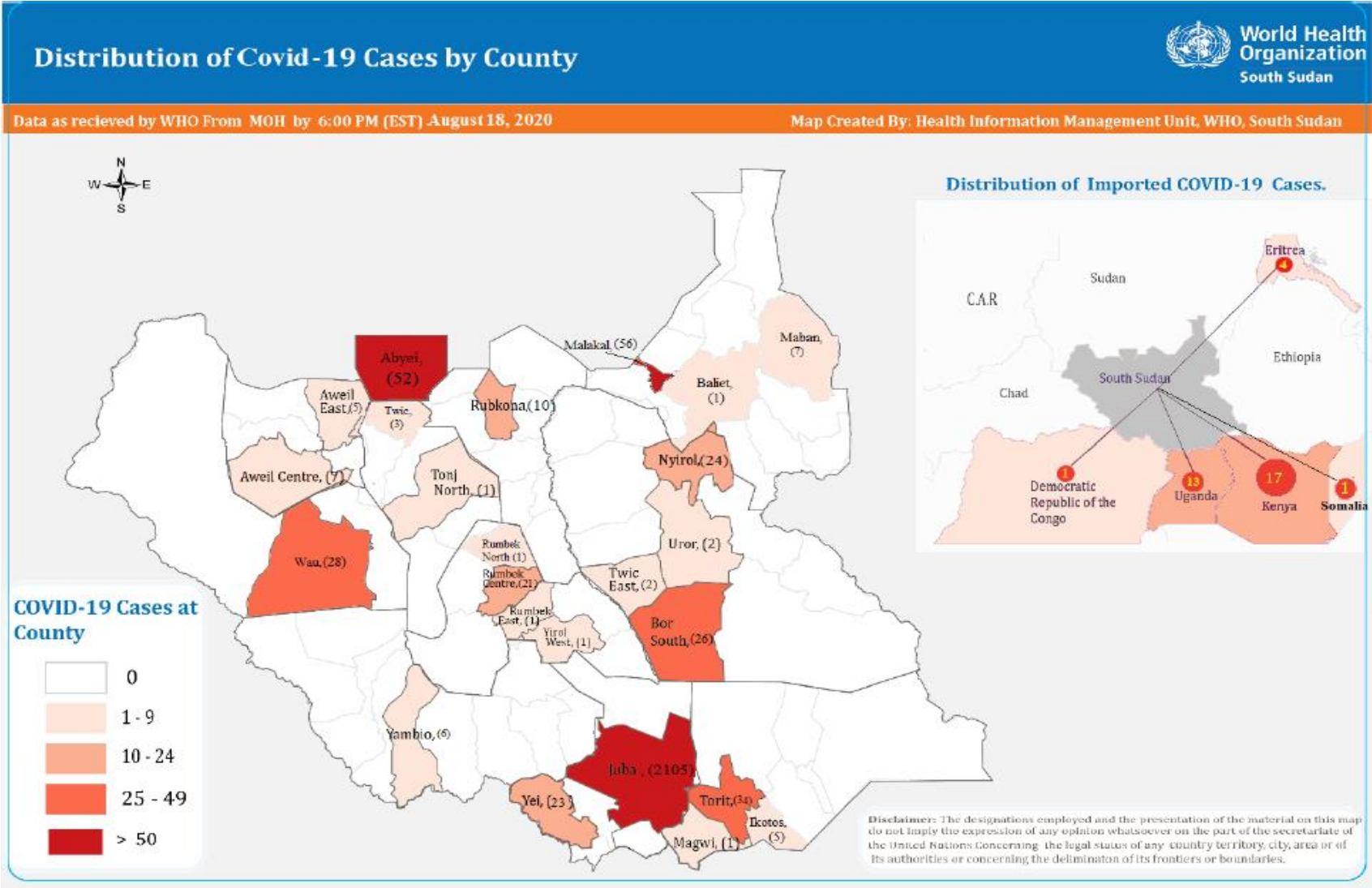
# Trends of COVID-19 cases in South Sudan

Figure 1. New and cumulative confirmed COVID-19 cases by notification date



COVID-19 cases increasing exponentially in the past few weeks

# Distribution of COVID-19 cases in South Sudan



The majority of the cases have been reported in Juba; while the rest have been imported (involving truckdrivers from the neighboring countries)



# Overall Conclusions and Recommendations



# Conclusion

- The overall IDSR and EWARN reporting performance in week 33, is above the target of 80%. (9) states were above 80%
- 2494 confirmed COVID-19 cases in South Sudan; 85% in Juba with 47 deaths (CFR of 1.9%). Total 7,945 contacts identified, quarantined, & undergoing follow up
- Cumulative total of COVID-19 alerts is 1006, of these, 831 (82.6%) have been verified and samples were collected
- With six outbreaks confirmed in 2020; measles remains the most frequent vaccine preventable disease
- There is ongoing measles outbreak in Bentiu PoC
- Given the COVID-19 pandemic, it is critical that measures are stepped up to contain its spread.



## Recommendations

- All partners should support CHDs & State Ministries of Health to undertake IDSR/EWARN reporting
- All health facilities should report, and conduct case-based investigation of suspect measles cases and routine measles immunization should be strengthened in all counties
- Strengthen capacities for COVID-19 containment through identifying and testing suspect cases, isolating confirmed cases, and quarantining contacts



**Thanks to the State Surveillance Officers, County Surveillance Officers and Health Facility in-charges for sharing the weekly IDSR data**

**Thanks to all partners for supporting IDSR weekly reporting and sharing the line lists**

**To access the IDSR bulletins for 2020 use the link below:**

**<https://www.afro.who.int/publications/south-sudan-weekly-disease-surveillance-bulletin-2020>**



## This bulletin is produced by the Ministry of Health with Technical support from WHO

For more help and support, please contact:

**Dr. Pinyi Nyimol Mawien**  
Director General Preventive Health Services  
Ministry of Health  
Republic of South Sudan  
Telephone: +211916285676

**Mr. Mathew Tut M. Kol**  
Director, Emergency Preparedness and Response  
Ministry of Health, RSS  
Tell: +211916010382, +211922202028  
Emails: tut1988@yahoo.com, greensouth2020@gmail.com  
Skype: mathew19885

### IDSR Bulletin Editorial Team

1. Mr. Ajak Ater, MoH - Email: ajakater014@gmail.com
2. Ms. Sheila Baya, WHO- Email: bayas@who.int
3. Mr. Robert Lasu Martin, WHO -Email: lasur@who.int
4. Mrs. Rose Dagama , WHO - Email: dagamaa@who.int
5. Dr. Abraham Adut, WHO- Email: abenegoa@who.int
6. Dr. Alice Igale Lado, WHO - Email: ladua@who.int
7. Dr. Joseph Wamala, WHO - Email: wamalaj@who.int
8. Dr. Argata Guracha Guyo, WHO - Email: guyo@who.int

### Notes

WHO and the Ministry of Health gratefully acknowledge the surveillance officers [at state, county, and health facility levels], health cluster and health pooled fund (HPF) partners who have reported the data used in this bulletin. We would also like to thank ECHO and USAID for providing financial support.

The data has been collected with support from the EWARS project. This is an initiative to strengthen early warning, alert and response in emergencies. It includes an online, desktop and mobile application that can be rapidly configured and deployed in the field. It is designed with frontline users in mind, and built to work in difficult and remote operating environments. This bulletin has been automatically published from the EWARS application.

More information can be found at <http://ewars-project.org>

