

South Sudan

Integrated Disease surveillance and response (IDSR)

**Epidemiological Bulletin Week 34 of 2020 (August 17-
August 23)**



World Health
Organization
South Sudan



- In week 34, 2020 IDSR reporting completeness was 93% and timeliness was 82% at health facility level. EWARN reporting completeness and timeliness were 88%
- Of the 115 alerts in week 34, 2020; 71% were verified 1% were risk assessed and 1% required a response. Malaria (51), AWD (30), ARI (12), measles (3) and bloody diarrhea (14) were the most frequent alerts in week 34, 2020
- Malaria remains the top cause of morbidity and accounted for 82,101 cases (61.4% of OPD cases)
- A total of 1059 COVID-19 alerts have been investigated with 884 (83.5%) being verified. Total of 2514 COVID-19 confirmed cases and 47 deaths, CFR of 1.9%

SURVEILLANCE PERFORMANCE



For the Integrated Disease Surveillance (IDSR)
network and Early warning alert and response
network (EWARN)



IDSR timeliness & completeness performance at county level for week 34 of 20202



Completeness States Ranking	States	Supporting Partners	Total No. of Functional Health Facilities in the State	No. of HF's Reported on Time	Timeliness Percentage	No. of HF's Reported regardless of Time	Completeness Percentage
1st	WES	AMREF, World Vision, CUAMM, CDTY, OPEN	213	213	100%	213	100%
2nd	Lakes	Doctors with Africa (CUAMM), LIVEWELL	113	104	92%	113	100%
3rd	CES	HLSS, SSUHA, Healthnet TPO, IHO, GOAL, TRI-SS, THESO	118	115	97%	115	97%
4th	WBGZ	Cordaid, Healthnet TPO, CARE International, IOM	75	35	47%	73	97%
5th	NBGZ	Malaria Consortium, Healthnet TPO, IRC, CEDS, IHO	130	96	74%	125	96%
6th	Warrap	GOAL, CCM, WVI, Malaria Consortium, UNKEA, Save the Children, MSF	119	103	87%	109	92%
7th	EES	Cordaid, HLSS, CCM	142	95	67%	130	92%
8th	Upper Nile	Cordaid, WVI, RI, IMC, NIDO, UNKEA, MC, SSAID	119	88	74%	106	89%
9th	Unity	Cordaid, UNIDOR, IRC, CHADO, CARE International, CRADA, CASS	88	69	78%	77	88%
10th	Jonglei	Nile Hope, MDM, JDF, Livewell, CMD, HFO, EDA, CRADA, Malaria Consortium, CMA	102	77	75%	68	67%
	South Sudan		1219	995	82%	1129	93%

KEY

	<60%	Poor
	61%-79%	Fair
	80%-99%	Good
	100%	Excellent

The timeliness of IDSR reporting (supported by EWARS mobile) at health facility level was 82% and completeness was 93%. All states except Jonglei were above the target of 80% with highest reporting rate in Lakes and WES with completeness of 100%.

IDSR timeliness & completeness performance at county level for week 34 of 2020 (1)



STATE	COUNTY	SUPPORTING PARTNER	Total No. of Functional Health Facilities in the County	No. of HFs Reported on Time	Timeliness Percentage	No. of HFs Reported regardless of time	Completeness Percentage
Lakes	Cueibet	Doctors with Africa (CUAMM)	15	15	100%	15	100%
Lakes	Rumbek North	Doctors with Africa (CUAMM)	7	7	100%	7	100%
Lakes	Rumbek East	Doctors with Africa (CUAMM)	24	24	100%	24	100%
Lakes	Awerial	Doctors with Africa (CUAMM)	7	7	100%	7	100%
NBGZ	Aweil South	Malaria Consortium(MC),IHO	9	9	100%	9	100%
CES	Kajo Keji	SSUHA,GOAL, TRI-SS	16	16	100%	16	100%
CES	Yei	SSUHA	17	17	100%	17	100%
CES	Terekeka	HealthNetTPO	20	20	100%	20	100%
NBGZ	Aweil North	HealthNetTPO,IHO	33	32	97%	33	100%
Lakes	Wulu	Doctors with Africa (CUAMM)	14	13	93%	14	100%
Lakes	Yirol West	Doctors with Africa (CUAMM)	12	10	83%	12	100%
Lakes	Rumbek Centre	Doctors with Africa (CUAMM)	23	19	83%	23	100%
Lakes	Yirol East	Doctors with Africa (CUAMM),LIVEWELL	11	9	82%	11	100%
WBGZ	Raja	HealthNetTPO	12	0	0%	12	100%
WBGZ	Wau	Cordaid	28	14	50%	28	100%
CES	Juba	HLSS	46	45	98%	45	98%
NBGZ	Aweil East	IRC,TADO	36	27	75%	35	97%
WBGZ	Jur River	Cordaid	35	21	60%	33	94%
CES	Lainya	SSUHA	14	13	93%	13	93%
NBGZ	Aweil Centre	Malaria Consortium(MC)	15	13	87%	14	93%
NBGZ	Aweil West	HealthNetTPO	37	15	41%	34	92%
CES	Morobo	SSUHA,THESO	6	4	67%	4	67%

STATE	COUNTY	SUPPORTING PARTNER	Total No. of Functional Health Facilities in the County	No. of HFs Reported on Time	Timeliness Percentage	No. of HFs Reported regardless of time	Completeness Percentage
Unity	Rubkona	Cordaid,IRC,IOM,MSF	14	14	100%	14	100%
Unity	Mayom	CASS	9	9	100%	9	100%
Unity	Mayendit	CASS	12	12	100%	12	100%
WES	Nzara	World Vision International	20	20	100%	20	100%
WES	Nagero	World Vision International	10	10	100%	10	100%
WES	Mundri West	CUAMM	21	21	100%	21	100%
WES	Maridi	AMREF	26	26	100%	26	100%
WES	lbba	AMREF	11	11	100%	11	100%
WES	Mundri East	CUAMM	19	19	100%	19	100%
WES	Yambio	World Vision International	42	42	100%	42	100%
WES	Ezo	World Vision International	27	27	100%	27	100%
WES	Mvolo	CUAMM	11	11	100%	11	100%
WES	Tambura	World Vision International	26	26	100%	26	100%
Unity	Panyijjar	IRC	15	14	93%	15	100%
Unity	Abiemnhom	Cordaid	4	3	75%	4	100%
Unity	Guit	CHADO	7	4	57%	6	86%
Unity	Pariang	CARE International	11	5	45%	9	82%
Unity	Koch	CRADA,IRC.	4	3	75%	3	75%
Unity	Leer	UNIDOR	11	5	45%	5	45%

IDSR timeliness & completeness performance at county level for week 34 of 2020 (2)



STATE	COUNTY	SUPPORTING PARTNER	Total No. of Functional Health Facilities in the County	No. of HFs Reported on Time	Timeliness Percentage	No. of HFs Reported regardless of time	Completeness Percentage
Jonglei	Bor	MDM + JDF	24	24	100%	24	100%
Jonglei	Pochalla	LIVEWELL	7	7	100%	7	100%
EES	Kapoeta South	CCM	10	9	90%	10	100%
EES	Ikotos	HLSS	27	21	78%	27	100%
EES	Kapoeta North	CCM	15	1	7%	15	100%
EES	Kapoeta East	CCM	10	5	50%	10	100%
Jonglei	Duk	MDM + JDF	11	10	91%	10	91%
EES	Magwi	HLSS	21	18	86%	19	90%
EES	Lopa Lafon	HLSS	18	14	78%	16	89%
EES	Budi	Cordaid	21	12	57%	18	86%
Jonglei	Fangak	CMD,HFO	17	14	82%	14	82%
EES	Torit	Cordaid	20	15	75%	15	75%
Jonglei	Ayod	CMD,EDA	15	11	73%	11	73%
Jonglei	Akobo	NILE HOPE	3	2	67%	2	67%
Jonglei	Nyiröl	CMA,Malaria Consortium	8	4	50%	5	63%
Jonglei	Pibor	LIVEWELL,CRADA	2	1	50%	1	50%
Jonglei	Twic East	MDM + JDF	8	2	25%	2	25%
Jonglei	Canal Pigi	IMC	5	1	20%	1	20%
Jonglei	Uror	Nile Hope,Malaria Consortium	2	0	0%	0	0%

STATE	COUNTY	SUPPORTING PARTNER	Total No. of Functional Health Facilities in the County	No. of HFs Reported on Time	Timeliness Percentage	No. of HFs Reported regardless of time	Completeness Percentage
Warrap	Tonj East	CCM	12	12	100%	12	100%
Warrap	Tonj North	CCM	14	14	100%	14	100%
Warrap	Tonj South	CCM	12	12	100%	12	100%
Upper Nile	Longechuk	RI	9	9	100%	9	100%
Warrap	Gogrial East	GOAL	15	14	93%	15	100%
Upper Nile	Maiwut	RI	5	4	80%	5	100%
Upper Nile	Melut	WVI + RI	8	6	75%	8	100%
Upper Nile	Panyikang	IMC	4	3	75%	4	100%
Upper Nile	Fashoda	CORDAID	13	9	69%	13	100%
Upper Nile	Makal	IMC	7	2	29%	7	100%
Upper Nile	Maban	WVI + RI	17	12	71%	16	94%
Upper Nile	Renk	WVI + RI	13	12	92%	12	92%
Warrap	Gogrial West	GOAL	31	25	81%	28	90%
Warrap	Twic	GOAL	25	19	76%	21	84%
Upper Nile	Luakpiny Nasir	UNKEA,RI	16	13	81%	13	81%
Upper Nile	Akoka	IMC	5	2	40%	4	80%
Warrap	Abyei	AAA,Save the Children,MSF	10	7	70%	7	70%
Upper Nile	Manyo	CORDAID	10	7	70%	7	70%
Upper Nile	Ulang	UNKEA,RI	15	9	60%	8	53%
Upper Nile	Baliet	IMC	4	0	0%	0	0%



Surveillance: EWARS performance indicator by partner for week 34 of 2020

Partner	HF's	Reporting		Performance	
PARTER	# OF SITES	# of reports received on Time	No. of HF's Reported regardless of time	Timeliness	Completeness
Medair	2	2	2	100%	100%
World Relief	2	2	2	100%	100%
CMD	1	1	1	100%	100%
IRC	1	1	1	100%	100%
THESO	1	1	1	100%	100%
GOAL	2	2	2	100%	100%
TRI-SS	2	2	2	100%	100%
HFO	1	1	1	100%	100%
IMC	6	6	6	100%	100%
MSF-E	6	6	6	100%	100%
RHS	1	1	1	100%	100%
IOM	12	12	12	100%	100%
IMA	9	9	9	100%	100%
MDM	10	9	9	90%	90%
SMC	1	0	1	0%	100%
MSF-H	5	1	1	20%	20%
TOTAL	62	56	57	90%	92%

Completeness was 92% and timeliness was 90% for weekly reporting in week 34, 2020 for partner-supported clinics serving IDP sites.

EVENT-BASED SURVEILLANCE



Alert management including detection; reporting; verification; risk assessment; & risk characterization





Alert by disease and hubs in week 34 of 2020 [a total of 115 events specific alerts generated by state

State	Acute jaundice syndrome	Acute Respiratory Infections (ARI)	Acute Watery Diarrhoea	AFP	Bloody Diarrhoea	Malaria (Confirmed)	Measles	Guinea Worm	Covid-19	Total alerts
CES		2	7		3	3				15
EES		1	3			2				6
Jonglei								1		1
Unity									1	1
Upper Nile	1	3	4			5	1		1	15
Warrap			4	1	4	1				10
WBGZ		1	2		3	3	2			11
WES		5	10		4	37				56
Total alerts	1	12	30	1	14	51	3	1	2	115

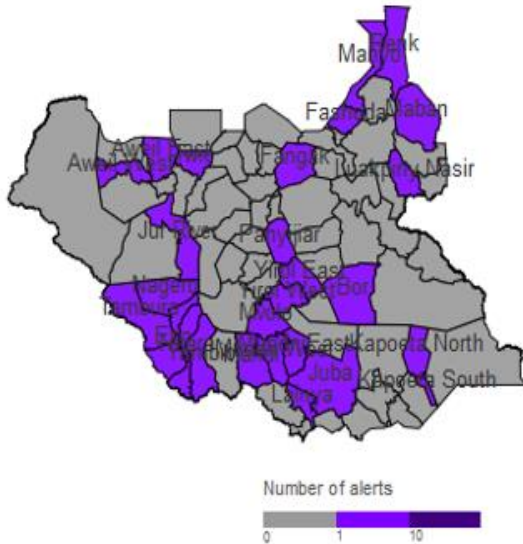
During this week:

- 12 ARI alert: 3 undergoing investigation and 9 under been monitored
- 1 AJS alert: its investigated and been monitored
- 30 AWD alert: 16 are undergoing investigation by the RRT and 14 are been monitored
- 14 ABD: 7 are undergoing investigation and 7 under been Monitored
- 52 Malaria alerts: 27 are undergoing investigation and 24 under monitoring
- 3 Measles alert: are investigated and they are been monitored
- 1 Guinea Worm alert: The Guinea Worm team investigated and sample collected
- 2 COVID-19 alert: all are investigated and sample collected
- 1 AFP alert: its under monitoring by the County RRT

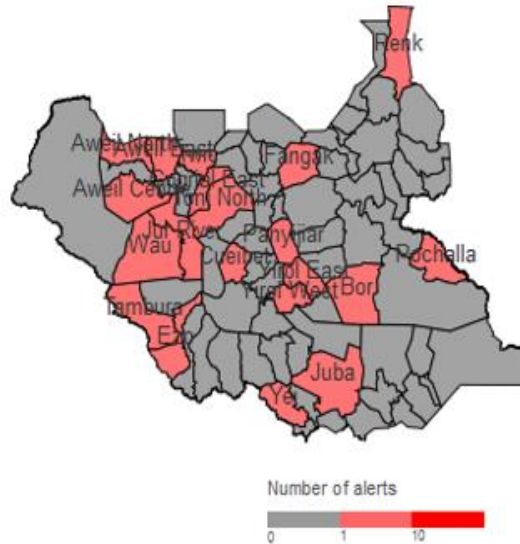
Alert: Map of key disease alerts by county of week 34 of 2020



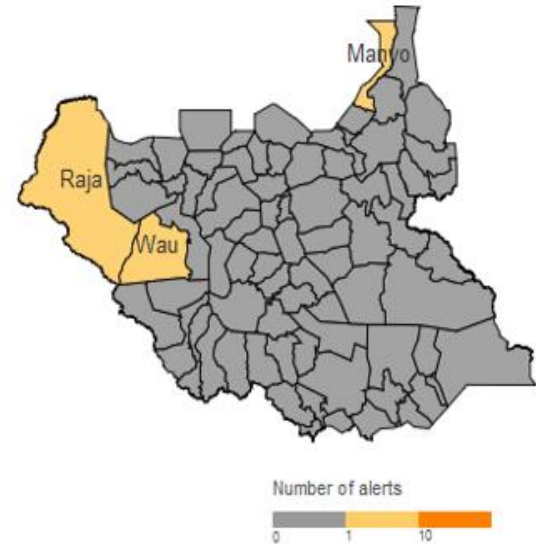
Map 2a | Malaria (W34 2020)



Map 2b | Bloody diarrhoea (W34 2020)



Map 2c | Measles (W34 2020)



Map 2e | Guinea Worm (W34 2020)



W34	Cumulative (2020)	
0	11	Low risk
4	4	Medium risk
0	27	High risk
1	54	Very high risk
71%	78%	% verified
0%	0%	% auto-discarded
1%	1%	% risk assessed
0%	1%	% requiring a response

SUSPECTED OUTBREAKS



Major suspected outbreaks in South Sudan in
2020



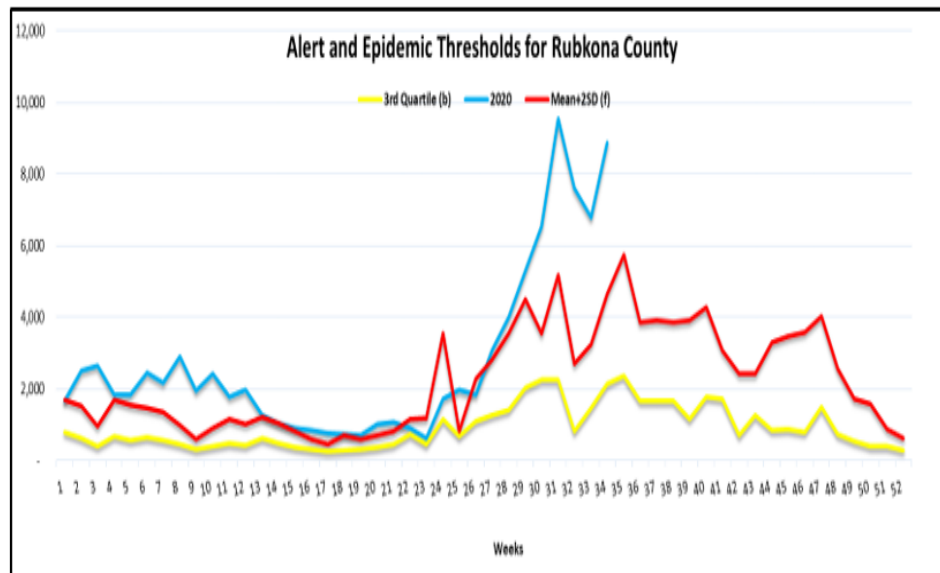


Malaria was the leading cause of morbidity and mortality, accounting for **61.4%** of all morbidities and **16.5%** of all mortalities this week.

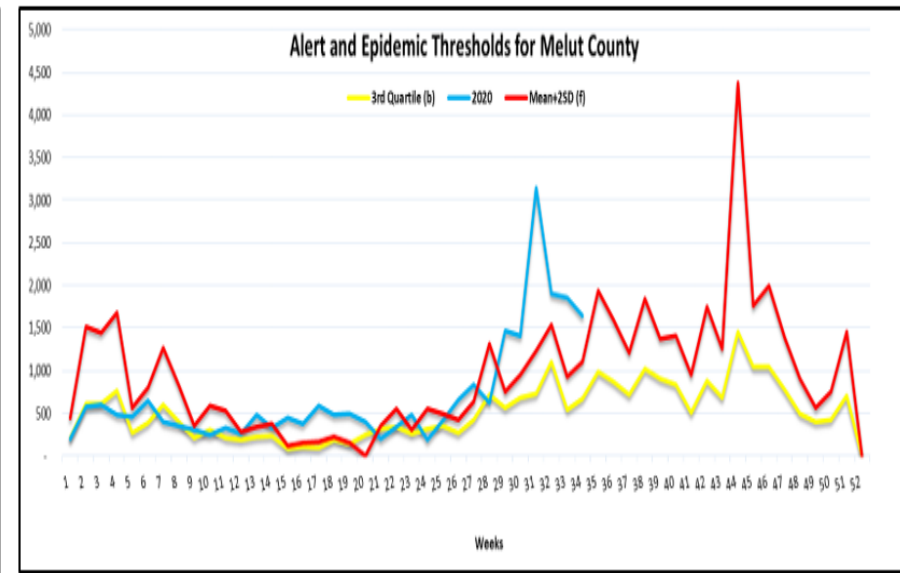
There were **3 Counties** with malaria trends that exceeded the threshold (third quartile of trends for the period 2013-2017) and these include the following: Bentiu hub (Rubkona); Malakal hub (Melut); Bor hub (Bor)

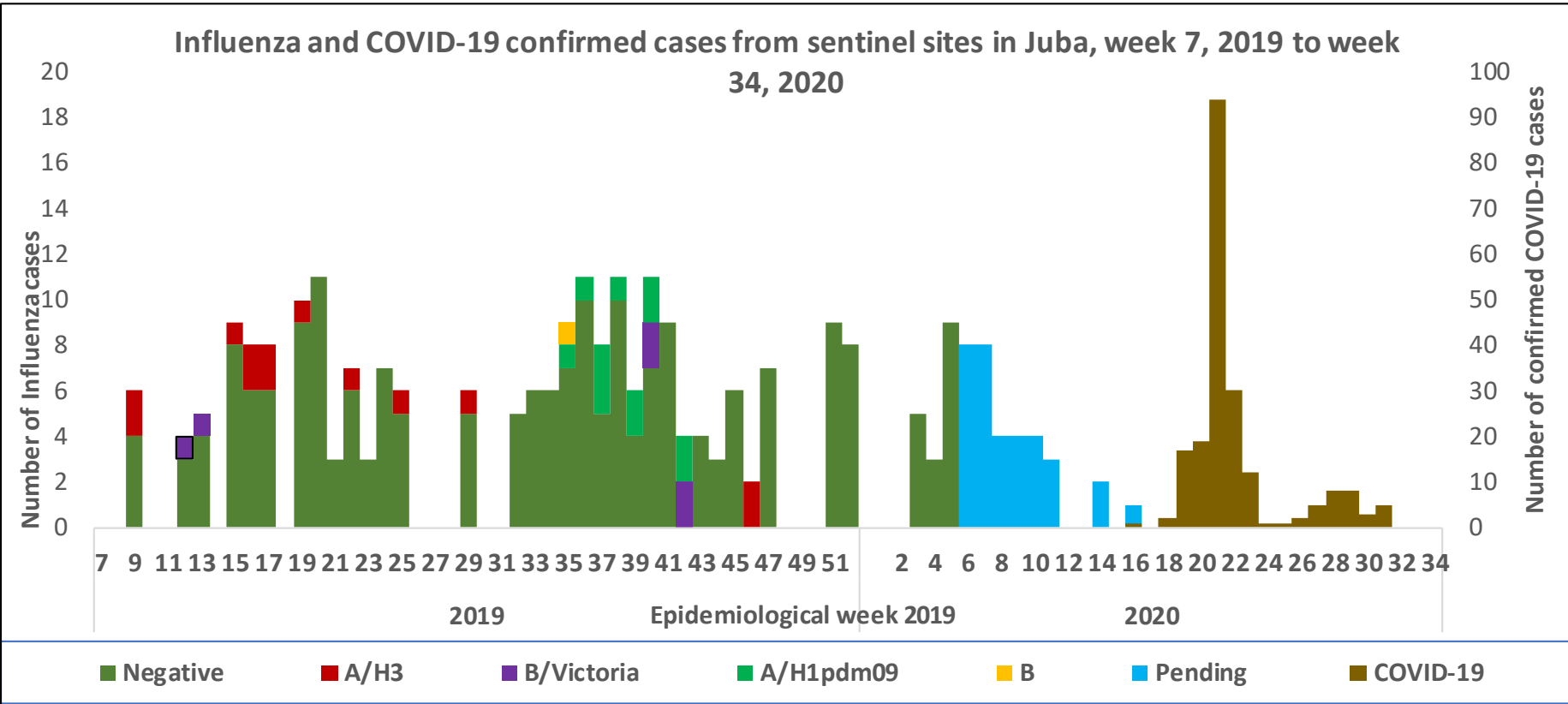
In the PoC sites; malaria is the top cause of morbidity in Bentiu (54%); Juba (36%), and Bor (46%). In Wau and Malakal PoCs, malaria accounts for (25%) and (3%) of OPD consultations, respectively.

Rubkona.



Melut.





- In week 7, 2019, South Sudan started case-based surveillance for Influenza Like Illness (ILI) and Severe Acute Respiratory Infection (SARI) cases through systematic collection of epidemiological and virological information.
- In 2019, a total of 309 ILI/SARI samples have been collected and tested in UVRI 228 being negative; 6 positive for Influenza B (Victoria); 13 positive for Influenza A (H3); and 12 positive for Influenza A (H1)pdm09 and (50) samples are pending test results .
- There are currently 20 Covid-19 designated sentinel surveillance sites in Juba that are collecting epidemiological data and samples from ILI/SARI cases. A total of 3308 samples have been collected in 2020 with 206 (6.2%) being positive for COVID-19 in Juba. These sentinel samples have not been tested for influenza in 2020

ACTIVE OUTBREAKS AND PUBLIC HEALTH EVENTS



Brief epidemiological description and public health response for active outbreaks and public health events





Flooding, South Sudan, week 34, 2020

Description

Flooding situation is expected to worsen in the coming weeks as threequarters of the country is forecasted to receive higher-than-normal rainfall throughout August and September 2020. The inaccessibility and population displacement and overcrowding in IDPs occasioned by floods will undermine country's effort to combat the ongoing COVID-19 pandemic.

Public health response

- The Government, supported by partners have undertaken initial rapid needs assessments to identify and support with the the emergency humanitarian needs
- A joint team of WHO and the National Ministry of Health mobile team has completed a mobile outreach in locations where the IDPs are sheltering in schools and slaughterhouses in Bor South. Another health partner is also conducting a mobile outreach in the area.
- WHO has prepositioned cholera kits at its nine hub offices outside the capital to support the health facilities and the implementing partners investigate and collect stool samples from suspected cholera cases, and treat suspected and confirmed cholera cases.





Aetiological agent	Location (county)	Date first reported	New cases since last bulletin	Cumulative cases to date (attack rate %)	Interventions			
					Case management	Vaccination	Health promotion	WASH
Ongoing epidemics								
Hepatitis E	Bentiu PoC	03/01/2018	6	375 (0.016)	Yes	No	Yes	Yes
Measles	Bentiu PoC	24/04/2019	NR	482 (0.006)	Yes	Yes	Yes	N/A





- Measles outbreaks confirmed in 2020

- 6 counties – Tonj East, Magwi, Bor, Kapoeta East, Tonj South and Wau

- Locations with ongoing measles transmission

- Bentiu PoC

- **No new confirmed measles cases**



Measles Outbreak situation & response by county as of week 34, 2020

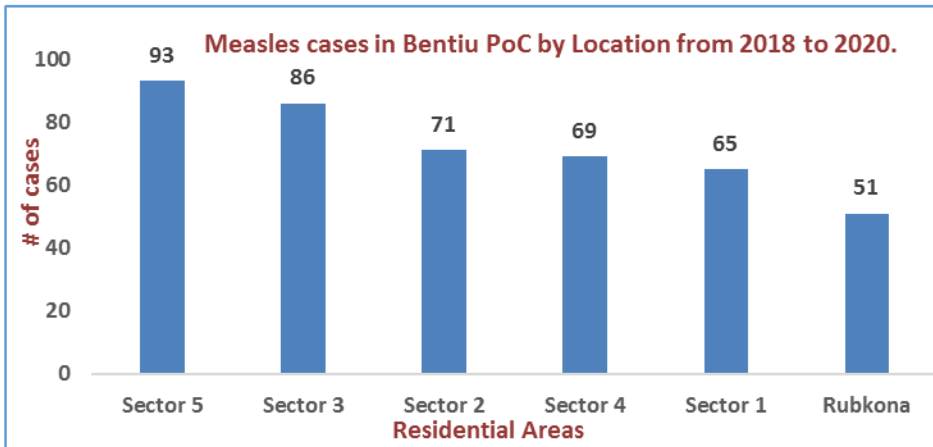
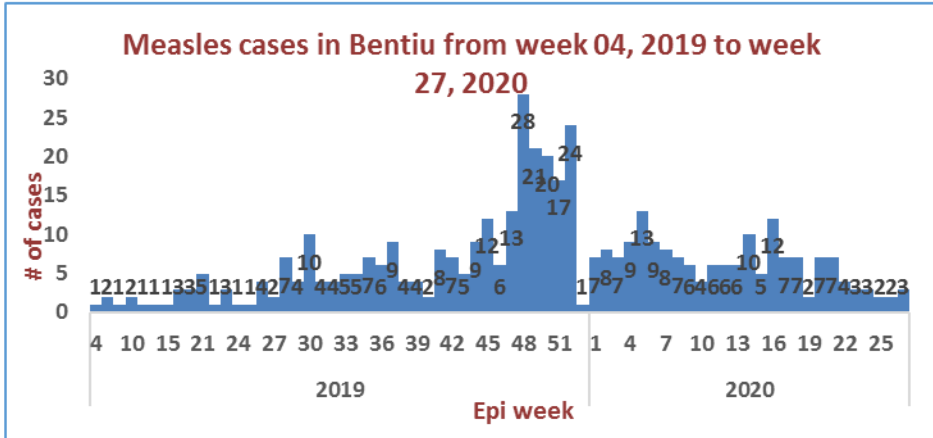


S/N	County	Population	Confirmed cases	Probable cases	Total cases	Cases per 100,000	Total deaths	CFR %	Date first reported	Emergency Campaign	Admin Coverage	Implementing Partner	Status	Comments
1	Tonj East	183,233	13	48	61	33.3	0	0	12-Dec-19	Mass Campaign	Pending result	Mass Campaign	controlled	Mass Campaign Completed
2	Magwi	272,880	5	5	10	3.7	0	0	19-Sep-19	Mass Campaign	Pending result	Mass Campaign	controlled	Mass Campaign Completed
3	Bor	320,956	7	7	14	4.36	0	0	17-Jan-19	Mass Campaign	115.60%	Mass Campaign	controlled	Mass Campaign Completed
4	Kapoeta East	262,720	6	10	16	6.1	0	0	18-Jan-20	Reactive Campaign (Jebel Boma)	Reactive Campaign to start on 26 Feb 2020	IRC	active	Reactive Campaign completed in March 2020
5	Aweil East	519,537	16	469	694	127.8	0	0	02-Jan-20				active	Reactive campaign started on 22 June 2020
6	Bentiu Poc	115,479			455	83	2	2	01-Jan-19	Reactive campaign	126%	IOM	Active	Reactive campaign 20 Jan 2020
7	Wau	271,975	3	0	22	8.1	0	0	14-Jan-20	Enhanced routine immunization	N/A		Active	Enhanced surveillance
Total		1,427,243	50	539	1272	266.36	2	0.23						





Confirmed Measles Outbreak in Bentiu PoC



Age Group	Cases	Percentage	Cum. %
0 - 4 Years	456	95%	95%
5 - 9 Years	14	3%	98%
10 - 14 Years	8	2%	99%
15+ Years	4	1%	100%
Grand Total	482	100%	

Epidemiological description

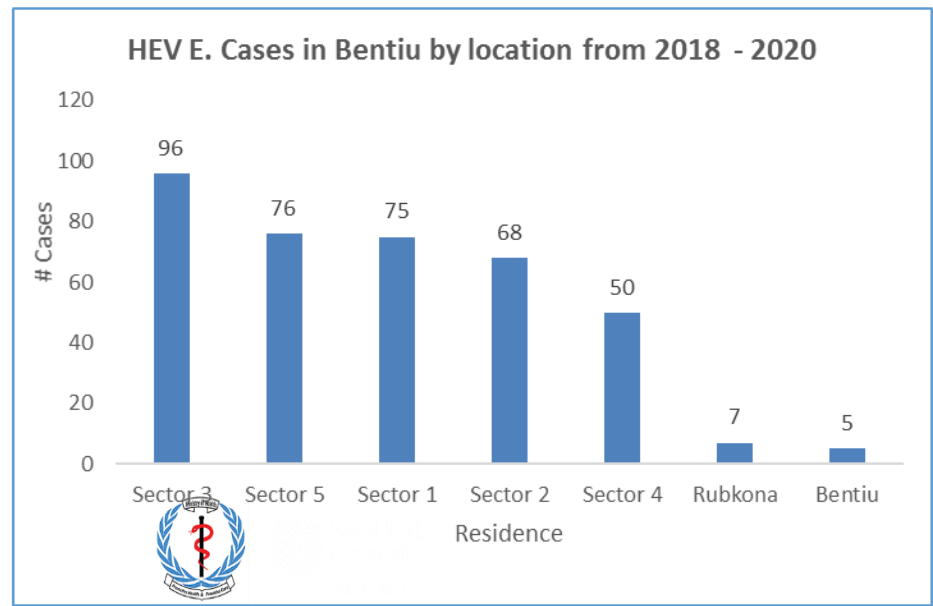
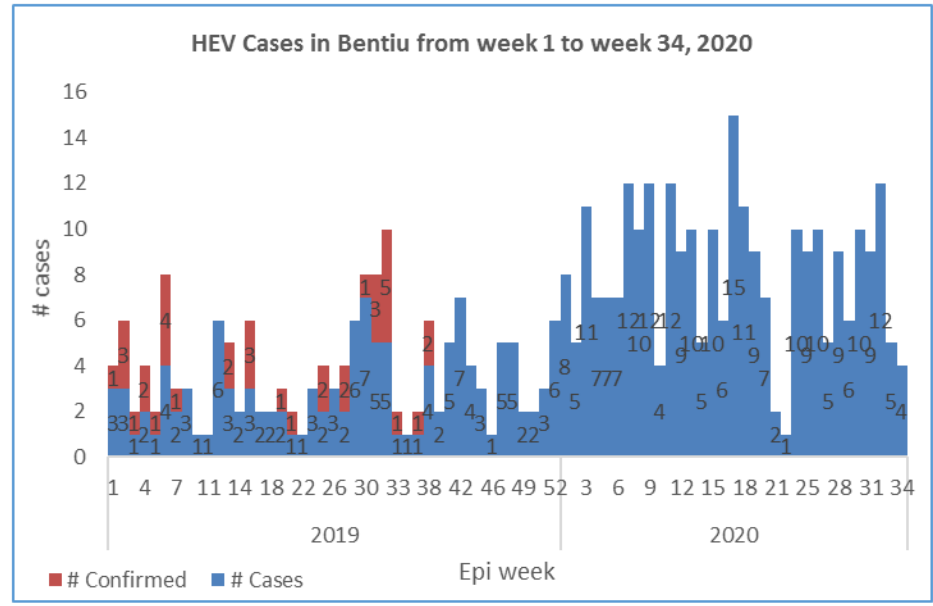
- Bentiu PoC has been reporting suspected measles/rubella cases since week 4 of 2019.
- 3 new cases reported in week 26, 2020
- At least 482 measles cases including 1 death (CFR 0.002%) reported since then.
- Cumulatively, 36 tested cases have tested measles IgM positive while 15 tested rubella IgM positive.
- 47% of cases are female and 53% are male
- 95% are under 5 yrs old, 5% are 5 yrs old and above
- Cases have been reported from inside and outside the PoC with most of the cases originating from the PoC (most cases from sector 5 but generally all the sectors are affected).

Response actions

- Several rounds of reactive campaigns were conducted in Bentiu IOM:
 - IOM completed a reactive campaign in Bentiu POC on 31 May 2019, with 21,285 children 6-59 months and coverage of 126% receiving measles vaccination. PCE was done by MoH & WHO, coverage was 74.6%.
 - Another campaign was conducted by SMOH, IOM and partners which was completed during the week of 20th January 2020 with coverage of 126%.
 - Partners to strengthen routine immunization to continue to collect samples from suspect cases.
 - Measles case management to continue



Hepatitis E, Bentiu PoC (1)



Descriptive epidemiology

- The persistent transmission of HEV in Bentiu PoC continues with 399 cases since beginning of 2019
- There were (4) new cases reported in week 34, 2020
- All the cases were managed as outpatient cases except for seven cases who were admitted
- Two deaths one on 12th, April 2019 and the second on 11th July 2019
- 50% are female and 50% are male.
- Age group less than 15 years had the most cases with (75%) cases.
- At risk of adverse outcomes when infected in the 3rd trimester of pregnancy
- Use of unsafe drinking water likely to be source of infection
- Up to week 34, 2020; there were 399 cases of HEV in Bentiu PoC including 4 deaths (CFR 0.01%)

Age-Group	Alive	Dead	Grand Total	Percentage	CFR	Cum. %2
1 - 4 Years	126	0	126	32%	0%	32%
10 - 14 Years	61	0	61	15%	0%	47%
15+ Years	96	3	99	25%	3%	72%
5 - 9 Years	111	2	113	28%	2%	100%
Grand Total	394	5	399	100%	0.01	



Recommendations

- Supportive case management guided by the HEV protocol is ongoing
- KEV messages on HEV prevention should continue within the community through HPs, CHWs and Kondial Radio
- With current COVID -19 Pandemic Outbreak, WASH partners to increase the coverage of hand washing facilities within the PoCs community.
- Other Wash intervention like increasing the access for clean water and improving the water storage in the affected individuals should be made urgently by distributing the water storage containers that will be the only way to mitigate this problem and stop the HEV outbreak.
- The WASH Cluster/HEV task force should engage in group discussion with Community leaders and woman group at water distribution points to understand their opinions on issue of Collapsing Jerrycans distribution.
- Monitoring the FRC levels at the taps stands in the different sectors, and the concentration of chlorination should maintain at 0.5-1mg/L as the point of collection





Aetiological agent	Location (county)	Date first reported	New cases since last bulletin	Cumulative cases to date (attack rate %)	Interventions			
					Case management	Vaccination	Health promotion	WASH
Controlled epidemics								
Measles	Juba	21/11/2019	NR	6(0.1667)	Yes	No	Yes	N/A
Measles	Tonj East	12/12/2019	NR	61(0.98)	yes	Yes	Yes	N/A
Measles	Bor	17/01/2020	NR	14(0.214)	yes	No	yes	N/A
Measles	Jebel Boma	10/12/2019	NR	96(0.063)	yes	No	Yes	N/A
Measles	Kapoeta East	18/01/2020	NR	16(0.625)	yes	No	Yes	N/A
Measles	Aweil East	29/12/2019	NR	664 (0.127)	Yes		No	Yes



EBOLA VIRUS DISEASE[EVD] PREPAREDNESS IN SOUTH SUDAN



Brief on the Ebola situation in DR Congo and updates on EVD preparedness in South Sudan



EVD DRC Update 23rd August in Equateur Province

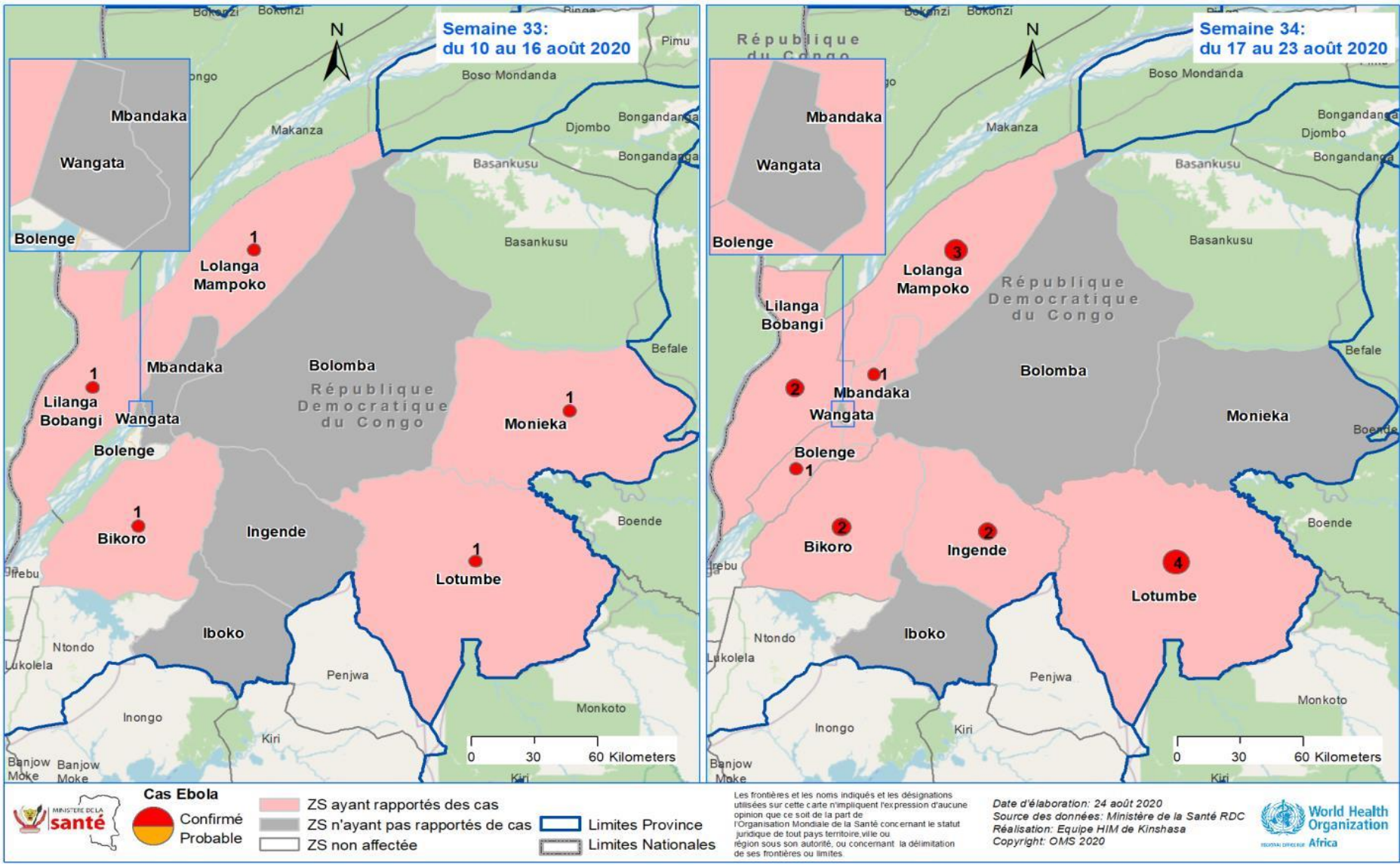
• cumulative figures

- 104 cases reported (100 confirmed, 4 probable)
- 44 deaths (42.3%)
- 41 recoveries
- 34 health areas affected across 11 Z
- 3 health workers infected
- 23.9% vaccinated, 650 high risk contacts
- In the past 21 days (03 – 23rd Aug). 31 confirmed cases notified across 16/34 health areas in 7/11 Zs compared with 26 in the previous 21 days
- 14.4% of cases composed of children aged 0-10

• highlights for 23rd August 2020

- highlights from 23rd Aug 2020
- 2 new confirmed cases reported in Moloundou - Moloundou border, Moloundou:
- 0 new deaths reported in Moloundou confirmed cases:
- 0 new recoveries reported:
- In W34 7.2% of active contacts followed:
- In W34 5.5% of alerts investigated.
- 4 new Moloundou and 1 new Z affected between W33 & W34
- 7 Z reported cases in W34 versus 5 in W33
- 1 confirmed highlights for 24th Aug 2020
- 0 new confirmed cases reported:
- 1 W strikes in Moloundou seriously affected, in the response (no alerts

Distribution of confirmed and probable cases of Ebola virus disease in Equateur province between W33 and W34



COVID-19 Updates

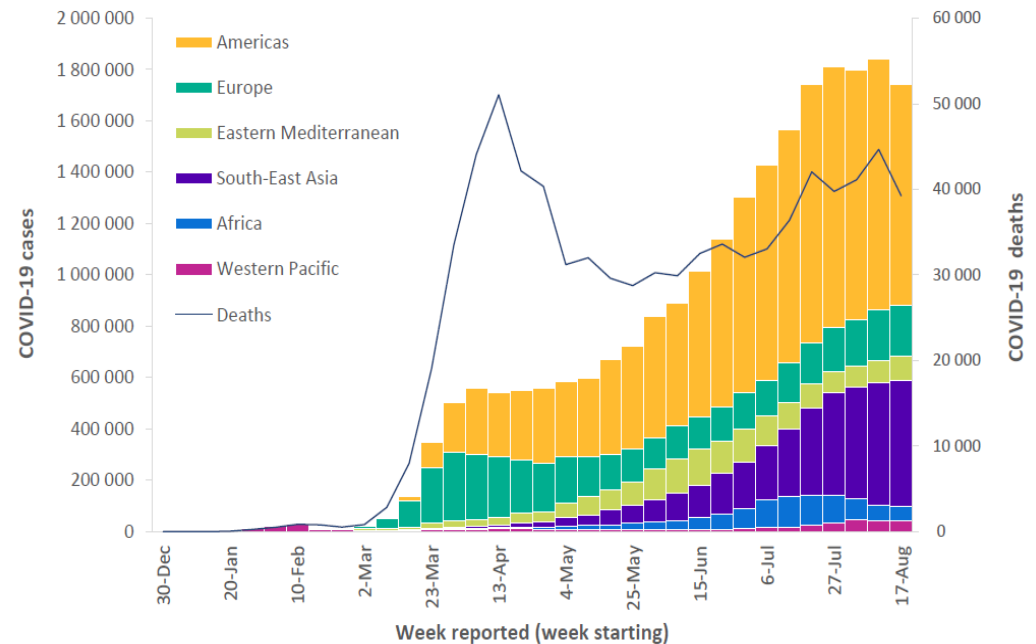




Situation update as of 23rd August 2020

- The COVID-19 pandemic initial cases were detected in Wuhan China
- Globally >23 million cases (> 800 000 deaths)
- Africa > 1 million cases (>20,352 deaths)

Figure 1: Number of COVID-19 cases and deaths reported weekly by WHO region, 30 December to 23 August 2020**



WHO: <https://www.who.int/health-topics/coronavirus>



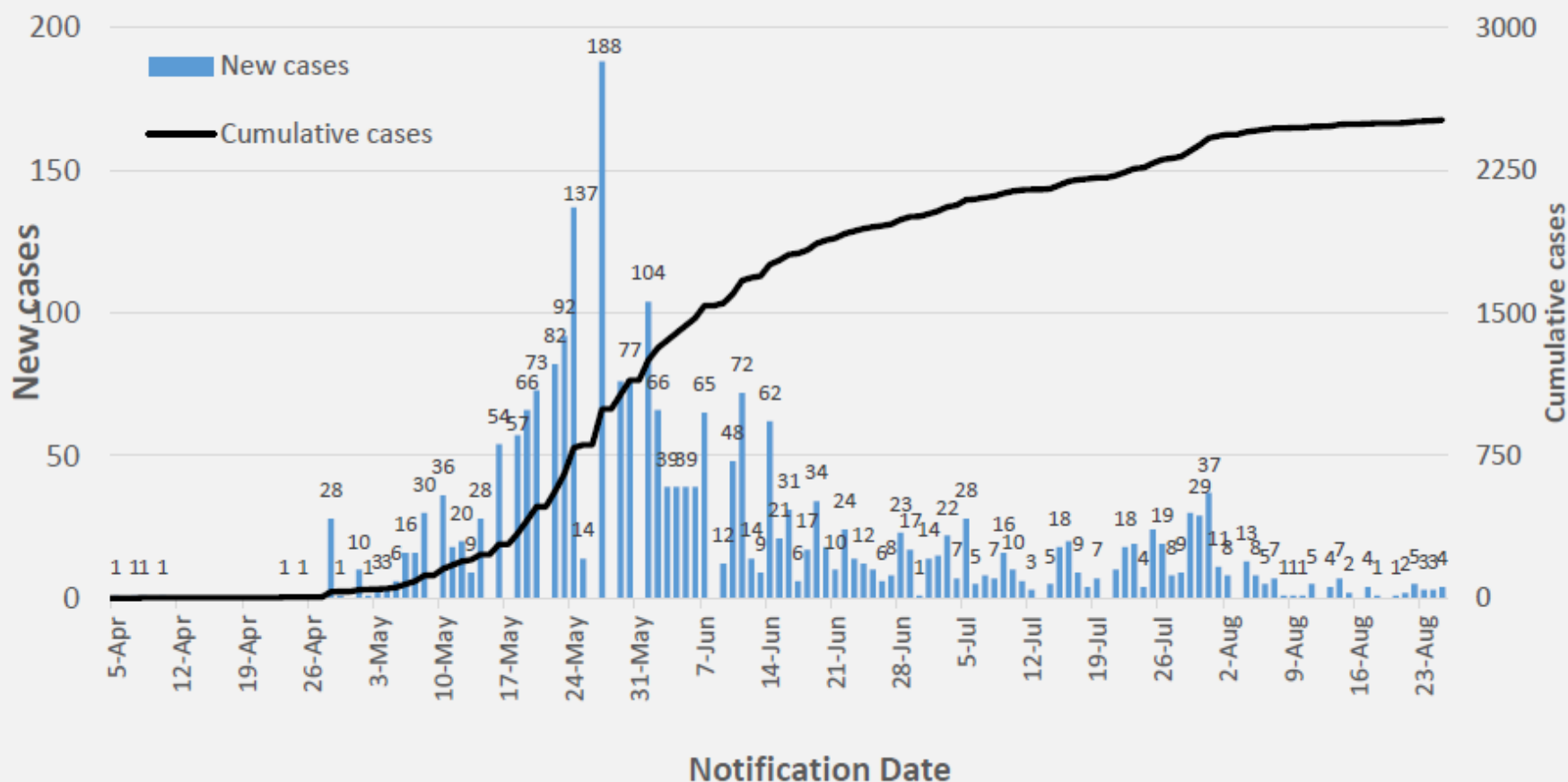
- 2,514 confirmed COVID-19 cases in South Sudan; 85% in Juba with 47 deaths and a case fatality rate (CFR) of 1.9%. Total 8,136 contacts identified, quarantined, & undergoing follow up
- Implementation of priorities; risk communication and community engagement; active case search and testing; quarantine for contacts; isolation of confirmed cases, infection prevention and control; and management of cases are currently underway
- The overall response currently led by the COVID-19 National level taskforce and the COVID-19 National Steering Committee





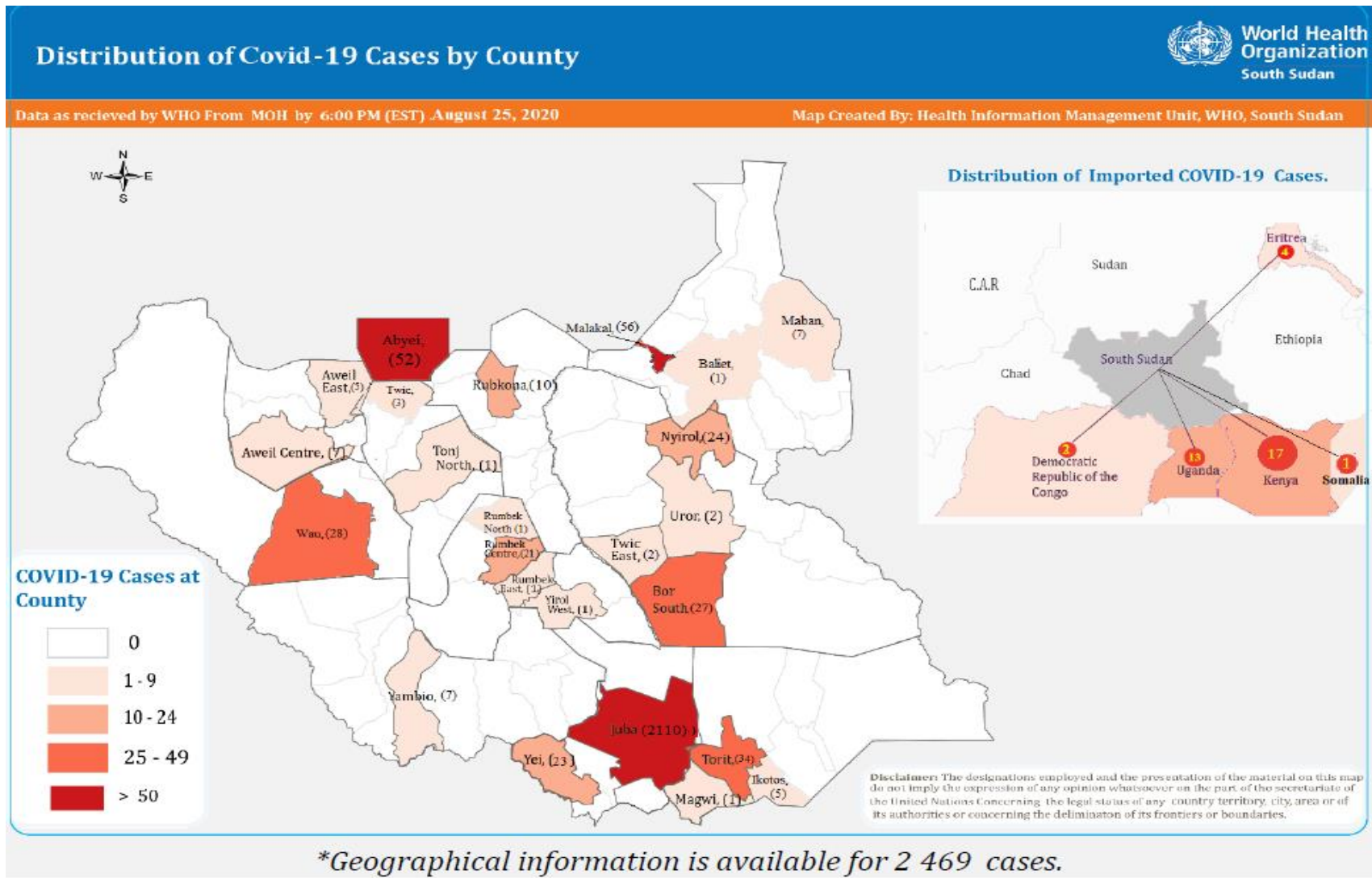
Trends of COVID-19 cases in South Sudan

Figure 1. New and cumulative confirmed COVID-19 cases by notification date



COVID-19 cases increasing exponentially in the past few weeks

Distribution of COVID-19 cases in South Sudan



The majority of the cases have been reported in Juba; while the rest have been imported (involving truckdrivers from the neighboring countries)

Overall Conclusions and Recommendations



Conclusion

- The overall IDSR and EWARN reporting performance in week 34, is above the target of 80%. (9) states were above 80%
- 2,514 confirmed COVID-19 cases in South Sudan; 85% in Juba with 47 deaths (CFR of 1.9%). Total 8,136 contacts identified, quarantined, & undergoing follow up
- Cumulative total of COVID-19 alerts is 1059, of these, 884 (83.5%) have been verified and samples were collected
- With six outbreaks confirmed in 2020; measles remains the most frequent vaccine preventable disease
- There is ongoing measles outbreak in Bentiu PoC
- Given the COVID-19 pandemic, it is critical that measures are stepped up to contain its spread.



Recommendations

- All partners should support CHDs & State Ministries of Health to undertake IDSR/EWARN reporting
- All health facilities should report, and conduct case-based investigation of suspect measles cases and routine measles immunization should be strengthened in all counties
- Strengthen capacities for COVID-19 containment through identifying and testing suspect cases, isolating confirmed cases, and quarantining contacts



Thanks to the State Surveillance Officers, County Surveillance Officers and Health Facility in-charges for sharing the weekly IDSR data

Thanks to all partners for supporting IDSR weekly reporting and sharing the line lists

To access the IDSR bulletins for 2020 use the link below:

<https://www.afro.who.int/publications/south-sudan-weekly-disease-surveillance-bulletin-2020>



This bulletin is produced by the Ministry of Health with Technical support from WHO

For more help and support, please contact:

Dr. Pinyi Nyimol Mawien
Director General Preventive Health Services
Ministry of Health
Republic of South Sudan
Telephone: +211916285676

Mr. Mathew Tut M. Kol
Director, Emergency Preparedness and Response
Ministry of Health, RSS
Tell: +211916010382, +211922202028
Emails: tut1988@yahoo.com, greensouth2020@gmail.com
Skype: mathew19885

IDSR Bulletin Editorial Team

1. Mr. Ajak Ater, MoH - Email: ajakater014@gmail.com
2. Ms. Sheila Baya, WHO- Email: bayas@who.int
3. Mr. Robert Lasu Martin, WHO -Email: lasur@who.int
4. Mrs. Rose Dagama , WHO - Email: dagamaa@who.int
5. Dr. Abraham Adut, WHO- Email: abenegoa@who.int
6. Dr. Alice Igale Lado, WHO - Email: ladua@who.int
7. Dr. Joseph Wamala, WHO - Email: wamalaj@who.int
8. Dr. Argata Guracha Guyo, WHO - Email: guyo@who.int

Notes

WHO and the Ministry of Health gratefully acknowledge the surveillance officers [at state, county, and health facility levels], health cluster and health pooled fund (HPF) partners who have reported the data used in this bulletin. We would also like to thank ECHO and USAID for providing financial support.

The data has been collected with support from the EWARS project. This is an initiative to strengthen early warning, alert and response in emergencies. It includes an online, desktop and mobile application that can be rapidly configured and deployed in the field. It is designed with frontline users in mind, and built to work in difficult and remote operating environments. This bulletin has been automatically published from the EWARS application.

More information can be found at <http://ewars-project.org>

