



NAMIBIA COVID-19 SITUATION REPORT NO. 244

Outbreak Name	COVID-19 outbreak	Country affected	Namibia
Date & Time	17.11.2020 17h00	Investigation start Date	13 March 2020
Prepared by	Surveillance Team		

HIGHLIGHTS/SITUATION UPDATE (17/11/2020)

TOTAL	
Tested	142113
Confirmed	13610
Active	316
Recovered	13152
Death	140

TODAY	
Tested	830
Confirmed	44
Active	316
Recovered	12
Death	0

- A total of **13610** cases have been recorded to-date, representing **0.5%** of the population.
- More male cases **7484 (55.0%)** were recorded compared to female cases **6126 (45.0%)**.
- Of the total confirmed cases, **534 (3.9%)** Health Workers (HWs) have tested positive for COVID-19 to-date.
 - 348 (65.2%) State; 183 (34.3%) Private, 3 (0.6%) Non-Government Organisations.
 - 280 (53.3%) recoveries and 3 (0.6%) deaths.
- The recovery rate now stands at **96.6%**.
- All fourteen (14) regions have reported confirmed cases; Khomas and Erongo regions reported the highest with **6080 (46.2%)** and **3992 (30.3%)** respectively.
- Of the total fatalities, **108 (77.1%)** are COVID-19 deaths while **32 (22.9%)** are COVID-19 related deaths.

Table 1: Distribution of confirmed COVID-19 cases by region, 17 November 2020

Region	Total No. of cases	Active cases	Recoveries	Deaths	Deaths in 24 hours	Cumulative deaths with co-morbidities	Non-COVID deaths	Health Workers
Erongo	3992	26	3924	41	1	38	1	70
Hardap	702	78	619	5	0	2	0	23
//Kharas	448	32	411	5	0	4	0	14
Kavango East	213	26	184	3	0	2	0	21
Kavango West	8	0	7	1	0	1	0	1
Khomas	6080	82	5929	69	1	66	0	341
Kunene	37	2	35	0	0	0	0	0
Ohangwena	220	1	216	2	0	0	1	6
Omaheke	122	5	114	3	0	2	0	4
Omusati	74	4	69	1	0	0	0	6
Oshana	798	45	748	5	0	4	0	15
Oshikoto	444	9	435	0	0	0	0	7
Otjozondjupa	391	6	380	5	0	4	0	14
Zambezi	81	0	81	0	0	0	0	12
Total	13610	316	13152	140	2	123	2	534

EPIDEMIOLOGICAL SITUATION IN NAMIBIA

Table 2: COVID-19 specimen recorded at the Laboratories
As of 17 November 2020

VARIABLES	TOTAL
Total samples received by the Laboratory	142231
Total samples tested	135505
Total samples re-tested	6608
Total positive results	13610
Total negative results	121845
Total samples discarded	117
Invalid results	1
Total pending results	0
Indeterminant/Inconclusive	50
Suspected cases in 24 hours (excludes re-tests)	825

- A highest peak of **2123 (15.6%)** cases was recorded during week 34 (Figure 1).
- After a peak in epi-week 34, the country has seen a gradual reduction in the average number of confirmed cases to 32 in epi-week 45.
- The number of cases have plateaued in the last four weeks as seen in the graph.
- The National Call center continues operation for 24 hours daily. Today (17/11/2020), **730** calls were answered including **67** alerts.

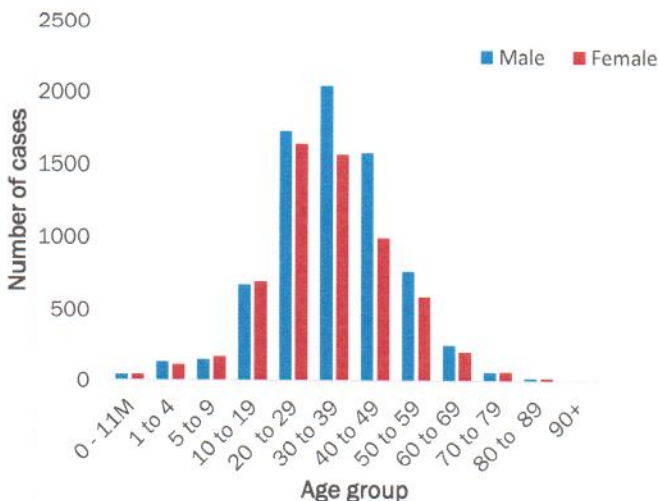


Figure 2: Age and Sex distribution of COVID-19 confirmed cases, as of 17 November 2020

- To date, **142113** tests (including **6608** re-tests) have been conducted by NIP, Path-Care, NAMDEB, UNAM and Namib Poultry laboratories.
- Since the beginning of the outbreak, **34398** contacts of confirmed cases have been identified, **869** new contacts were identified within the last 24 hours from 11 regions.
- Cumulatively, **31789** contacts have completed their monitoring period, while a total of **4246 (31.2%)** contacts of confirmed cases have tested positive.
- Today, **2633 (96.6%)** out of **2726** active contacts were monitored.

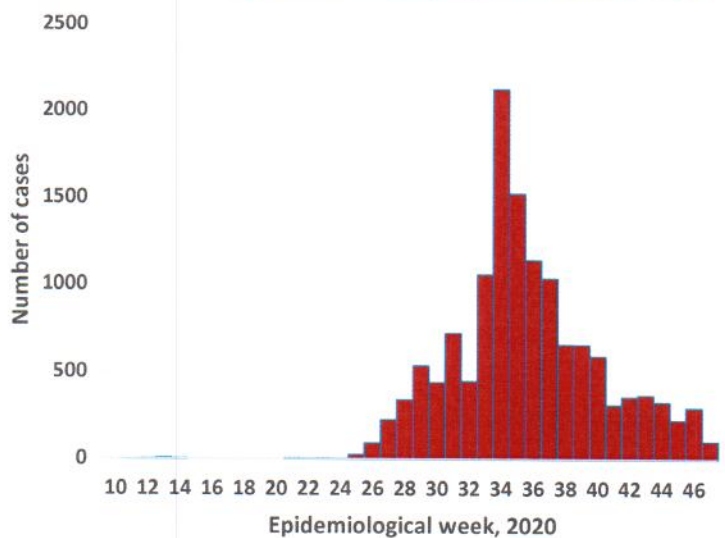


Figure 1: Epi-curve for confirmed COVID-19 cases as of 17 November 2020

- Of the total confirmed cases, **9574 (70.3%)** are in the 20-49 years age-brackets which constitutes the majority of the recorded cases.
- A total of **1699 (12.5%)** of the confirmed cases are among the 5-19 years category.
- The under 5 years age group make up **334 (2.5%)** of the total cases whereas, **631 (4.6%)** are above 60 years of age.

Table 3: Number of people in mandatory quarantine facilities, 17 November 2020

Region	Newly quarantined 24 Hrs.	Cumulative number	Number discharged	Number in quarantine now	Truck Drivers quarantined in 24 hrs.
Erongo	0	4123	3969	154	0
Hardap	8	892	861	31	0
Kavango	0	723	711	12	0
Khomas	0	2868	2801	67	0
//Kharas	0	2919	2901	18	0
Kunene	31	824	793	31	0
Ohangwena	0	558	553	5	0
Omaheke	16	1579	1512	67	0
Omusati	2	406	386	20	0
Oshana	0	359	355	4	0
Oshikoto	0	2451	2384	67	0
Otjozondjupa	0	964	964	0	0
Zambezi	3	981	973	8	0
Total	60	19647	19163	484	0

- Since March 2020, **19647** people have been placed into mandatory quarantine facilities around the country.
- A total of **484** people are currently in quarantine, with **60** new admissions in the last 24 hours.

PUBLIC HEALTH ACTION(S)

- Support visit and Intra action review on COVID-19 response is ongoing across all regions.
- Virtual training on Integrated Disease Surveillance Response (IDSR) is ongoing country-wide.
- Public awareness on COVID-19 prevention measures is ongoing.
- The government and developmental partners continue to prioritise continuation of essential health services.

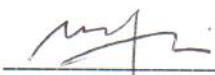
CHALLENGES

- Lack of isolation units and facilities in the country for special cases in closed settings such as police holding cells and prisons.


RECOMMENDATIONS

- Establish fully equipped isolation units and facilities for identified special cases throughout the country.

Approved



 Incident Manager
 17 November 2020



 Secretariat

For enquiries, please contact
Namibia Public Health Emergency Operations Centre:

 PHEOC@mhss.gov.na
 0800 100 100
 0851 100 100