



NAMIBIA COVID-19 SITUATION REPORT NO. 248

Outbreak Name	COVID-19 outbreak	Country affected	Namibia
Date & Time	21.11.2020 17h00	Investigation start Date	13 March 2020
Prepared by	Surveillance Team		

HIGHLIGHTS/SITUATION UPDATE (21/11/2020)

- A total of **13865** cases have been recorded to-date, representing **0.6%** of the population.
- More male cases **7607 (54.9%)** were recorded compared to female cases **6258 (45.1%)**.
- Of the total confirmed cases, **546 (3.9%)** Health Workers (HWs) have tested positive for COVID-19 to-date.
 - 358 (65.6%) State; 185 (33.9%) Private, 3 (0.5%) Non-Governmental Organizations.
 - 452 (83.9%) recoveries and 3 (0.6%) deaths.
- The recovery rate now stands at **95.4%**.
- All fourteen (14) regions have reported confirmed cases; Khomas and Erongo regions reported the highest with **6183 (44.6%)** and **4023 (29.0%)** respectively.
- Of the total fatalities, **111 (77.1%)** are COVID-19 deaths while **33 (22.9%)** are COVID-19



Table 1: Distribution of confirmed COVID-19 cases by region, 21 November 2020

Region	Total No. of cases	Active cases	Recoveries	Deaths	Deaths in 24 hours	Cumulative deaths with co-morbidities	Non-COVID deaths	Health Workers
Erongo	4023	45	3936	41	0	38	1	73
Hardap	739	85	647	7	1	5	0	23
//Kharas	483	67	411	5	0	4	0	16
Kavango East	214	27	184	3	0	2	0	21
Kavango West	8	0	7	1	0	1	0	1
Khomas	6183	161	5951	71	0	69	0	342
Kunene	37	2	35	0	0	0	0	0
Ohangwena	224	4	217	2	0	0	1	6
Omaheke	133	14	116	3	0	2	0	4
Omusati	79	1	77	1	0	0	0	6
Oshana	818	65	748	5	0	4	0	20
Oshikoto	447	12	435	0	0	0	0	7
Otjozondjupa	396	11	380	5	0	4	0	14
Zambezi	81	0	81	0	0	0	0	12
Total	13865	494	13225	144	1	129	2	546

EPIDEMIOLOGICAL SITUATION IN NAMIBIA

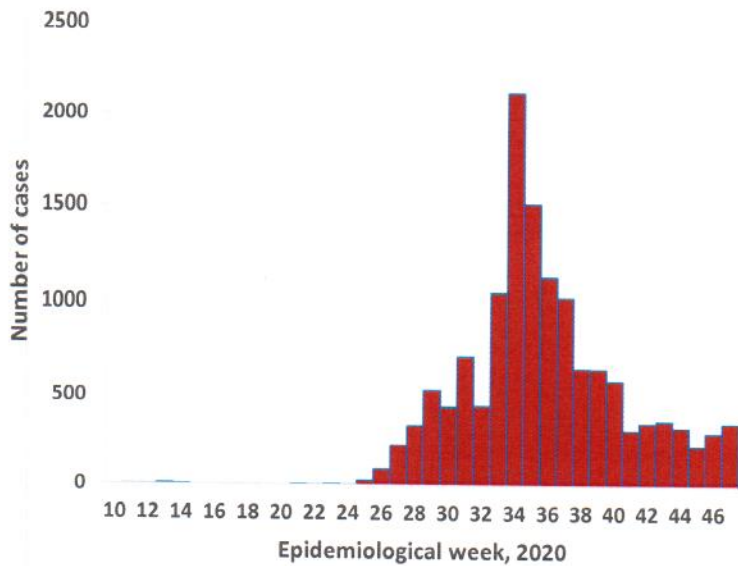


Figure 1: Epi-curve for confirmed COVID-19 cases, As of 21 November 2020

- A highest peak of **2123 (15.3%)** cases was recorded during week 34 (Figure 1).
- After a peak in epi-week 34, the country has seen a gradual reduction in the average number of confirmed cases to 42 in epi-week 46.
- The number of cases have plateaued in the last four weeks as seen in the graph.
- The National Call center continues operation for 24 hours daily. Today (21/11/2020), **620** calls were answered including **65** alerts.

- Of the total confirmed cases, **9716 (70.1%)** are in the 20-49 years age-brackets which constitutes the majority of the recorded cases.
- A total of **1762 (12.7%)** of the confirmed cases are among the 5-19 years category.
- The under 5 years age group make up **339 (2.4%)** of the total cases whereas, **650 (4.7%)** are above 60 years of age.

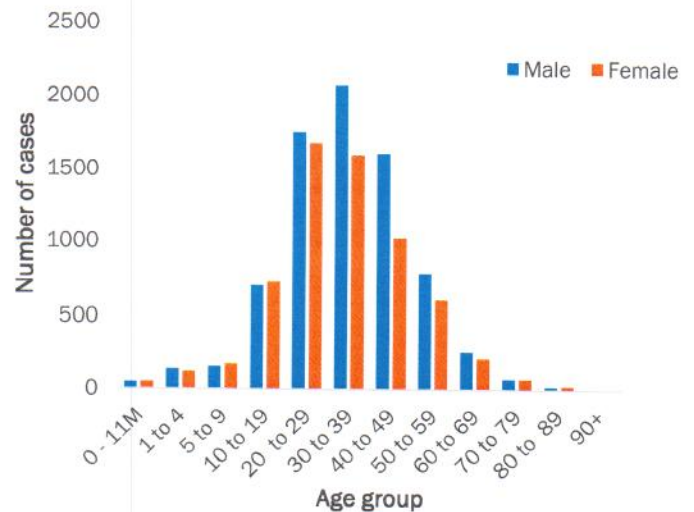


Figure 2: Age and Sex distribution of COVID-19 confirmed cases, as of 21 November 2020

Table 2: COVID-19 specimen recorded at the Laboratories As of 21 November 2020

VARIABLES	TOTAL
Total samples received by the Laboratory	146456
Total samples tested	139645
Total samples re-tested	6693
Total positive results	13865
Total negative results	125729
Total samples discarded	117
Invalid results	1
Total pending results	0
Indeterminant/Inconclusive	51
Suspected cases in 24 hours (excludes re-tests)	1167

- To date, **146338** tests (including **6693** re-tests) have been conducted by NIP, Path-Care, NAMDEB, UNAM and Namib Poultry laboratories.
- Since the beginning of the outbreak, **35080** contacts of confirmed cases have been identified, **186** new contacts were identified within the last 24 hours from 11 regions.
- Cumulatively, **32371** contacts have completed their monitoring period, while a total of **4293 (31.0%)** contacts of confirmed cases have tested positive.
- Today, **2855 (100%)** out of **2855** active contacts were monitored.

Table 3: Number of people in mandatory quarantine facilities, 21 November 2020

Region	Newly quarantined 24 Hrs.	Cumulative number	Number discharged	Number in quarantine now	Truck Drivers quarantined in 24 hrs.
Erongo	4	4145	4021	124	0
Hardap	1	903	878	25	0
Kavango	0	794	777	17	0
Khomas	0	2868	2801	67	0
//Kharas	9	2928	2914	14	0
Kunene	8	834	804	30	0
Ohangwena	6	564	559	5	0
Omaheke	1	1612	1550	62	0
Omusati	0	413	390	23	0
Oshana	0	359	358	1	0
Oshikoto	0	2559	2449	110	0
Otjozondjupa	0	966	966	0	0
Zambezi	0	991	974	17	0
Total	29	19936	19441	495	0

➤ Since March 2020, **19936** people have been placed into mandatory quarantine facilities around the country.

➤ A total of **495** people are currently in quarantine, with **29** new admissions in the last 24 hours.

PUBLIC HEALTH ACTION(S)

- Support visit and Intra action review on COVID-19 response is ongoing across all regions.
- Virtual training on Integrated Disease Surveillance Response (IDSR) is ongoing country-wide.
- Public awareness on COVID-19 prevention measures is ongoing.
- The government and developmental partners continue to prioritise continuation of essential health services.

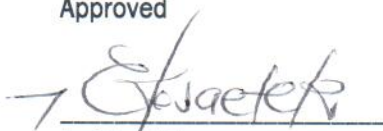
CHALLENGES

- Lack of isolation units and facilities in the country for special cases in closed settings such as police holding cells and prisons.

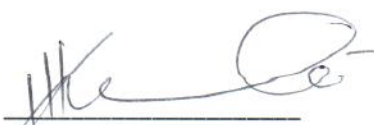
RECOMMENDATIONS

- Establish fully equipped isolation units and facilities for identified special cases throughout the country.


Approved



Incident Manager

21 November 2020


Secretariat

For enquiries, please contact
Namibia Public Health Emergency Operations Centre:

 PHEOC@mhss.gov.na

 0800 100 100

 0851 100 100