



### NAMIBIA COVID-19 SITUATION REPORT NO. 266

<b>Outbreak Name</b>	COVID-19 outbreak	<b>Country affected</b>	Namibia
<b>Date &amp; Time</b>	09.12.2020 17h00	<b>Investigation start Date</b>	13 March 2020
<b>Prepared by</b>	Surveillance Team		

#### HIGHLIGHTS/SITUATION UPDATE (09/12/2020)

- A total of **15773** cases have been recorded to-date, representing **0.6%** of the population.
- More male cases **8530 (54.1%)** were recorded compared to female cases **7243 (45.9%)**.
- Of the total confirmed cases, **621 (3.9%)** Health Workers (HWs) have tested positive for COVID-19 to-date.
  - 411 (66.2%) State; 207 (33.3%) Private, 3 (0.5%) Non-Governmental Organizations.
  - 530 (85.3%) recoveries and 3 (0.5%) deaths.



#### TODAY

Tested 2012

Confirmed 301

Active 1394

Recovered 23

Death 3

- The recovery rate now stands at **90.1%**.
- All fourteen (14) regions have reported confirmed cases; Khomas and Erongo regions reported the highest with **7257 (46.0%)** and **4243 (26.9%)** respectively.
- Of the total fatalities, **118 (74.7%)** are COVID-19 deaths while **40 (25.3%)** are COVID-19 related deaths.

**Table 1: Distribution of confirmed COVID-19 cases by region, 09 December 2020**

Region	Total No. of cases	Active cases	Recoveries	Deaths	Deaths in 24 hours	Cumulative deaths with co-morbidities	Non-COVID deaths	Health Workers
Erongo	4243	165	4035	42	0	39	1	76
Hardap	777	25	745	7	0	5	0	23
//Kharas	770	185	580	5	0	4	0	21
Kavango East	231	20	208	3	0	2	0	24
Kavango West	8	0	7	1	0	1	0	1
Khomas	7257	797	6382	78	2	74	0	367
Kunene	56	20	35	1	0	1	0	2
Ohangwena	235	7	225	2	0	0	1	7
Omaheke	152	6	142	4	0	3	0	4
Omusati	89	9	79	1	0	0	0	6
Oshana	893	59	825	9	1	8	0	45
Oshikoto	473	16	456	0	0	0	1	11
Otjozondjupa	505	83	417	5	0	4	0	20
Zambezi	84	2	82	0	0	0	0	14
<b>Total</b>	<b>15773</b>	<b>1394</b>	<b>14218</b>	<b>158</b>	<b>3</b>	<b>141</b>	<b>3</b>	<b>621</b>

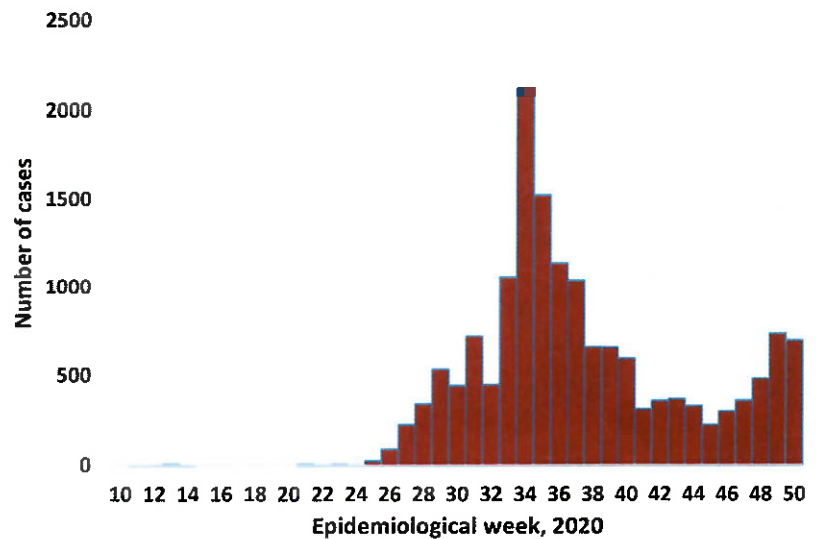
## EPIDEMIOLOGICAL SITUATION IN NAMIBIA

**Table 2: Number of people in mandatory quarantine facilities, 09 December 2020**

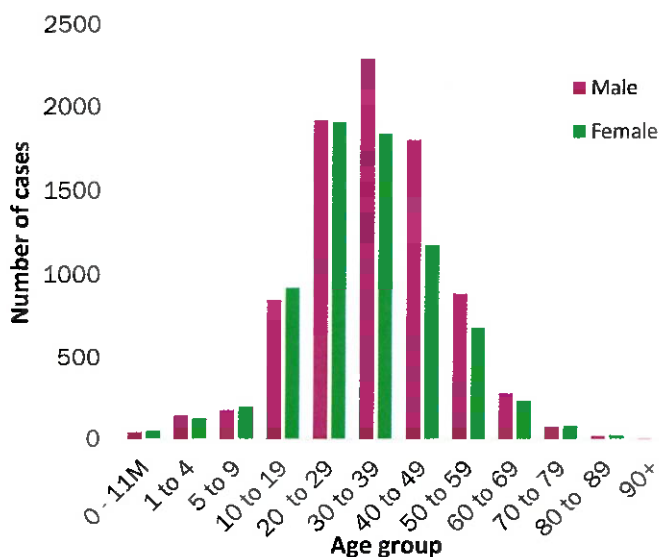
Region	Newly quarantined 24 Hrs.	Cumulative number	Number discharged	Number in quarantine now	Truck Drivers quarantined in 24 hrs.
Erongo	55	4329	4248	81	0
Hardap	3	957	933	24	0
Kavango	19	834	815	19	0
Khomas	0	2940	2930	10	0
//Kharas	0	2928	2914	14	0
Kunene	3	955	847	108	0
Ohangwena	0	573	569	4	0
Omaheke	0	1761	1731	30	0
Omusati	3	435	426	9	0
Oshana	0	365	365	0	0
Oshikoto	0	3015	2649	366	0
Otjozondjupa	1	981	980	1	0
Zambezi	2	1089	1073	16	0
<b>Total</b>	<b>86</b>	<b>21162</b>	<b>20480</b>	<b>682</b>	<b>0</b>

- Since March 2020, **21162** people have been placed into mandatory quarantine facilities around the country.
- A total of **682** people are currently in quarantine, with **86** new admissions in the last 24 hours.

- A highest peak of **2123 (13.5%)** cases was recorded during week 34 (Figure 1).
  - The National Call center continues operation for 24 hours daily.
- Today (09/12/2020) **921** calls were answered including **102** alerts.



**Figure 1: Epi-curve for confirmed COVID-19 cases, As of 09 December 2020**



**Figure 2: Age and Sex distribution of COVID-19 confirmed cases, as of 09 December 2020**

- Of the total confirmed cases, **10938 (69.3%)** are in the 20-49 years age-brackets which constitutes the majority of the recorded cases.
- A total of **2158 (13.7%)** of the confirmed cases are among the 5-19 years category.
- The under 5 years age group make up **367 (2.3%)** of the total cases whereas, **737 (4.8%)** are above 60 years of age.

**Table 3: COVID-19 specimen recorded at the Laboratories**  
As of 09 December 2020

VARIABLES	TOTAL
Total samples received by the Laboratory	169582
Total samples tested	162314
Total samples re-tested	7150
Total positive results	15773
Total negative results	146489
Total samples discarded	117
Invalid results	1
Total pending results	0
Indeterminant/Inconclusive	52
Suspected cases in 24 hours (excludes re-tests)	1995

- To date, **169464** tests (including **7150** re-tests) have been conducted by NIP, Path-Care, NAMDEB, UNAM and Namib Poultry laboratories.
- Since the beginning of the outbreak, **38333** contacts of confirmed cases have been identified, **336** new contacts were identified within the last 24 hours from 11 regions.
- Cumulatively, **35356** contacts have completed their monitoring period, while a total of **4505 (28.6%)** contacts of confirmed cases have tested positive.
- Today, **3146 (97.8%)** out of **3217** active contacts were monitored.

- PUBLIC HEALTH ACTION(S)**
- Expanded Targeted Testing is being conducted at institutions that have confirmed positive cases.
  - Virtual training on Integrated Disease Surveillance Response (IDSR) is ongoing country-wide.
  - Public awareness on COVID-19 prevention measures is ongoing.
  - The government and developmental partners continue to prioritise continuation of essential health services.

- CHALLENGES**
- Lack of isolation units and facilities in the country for special cases in closed settings such as schools, police holding cells and prisons.

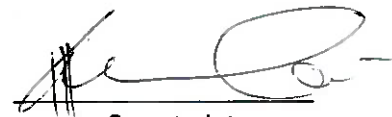
- RECOMMENDATIONS**
- Establish fully equipped isolation units and facilities for identified special cases throughout the country.

Approved



Incident Manager

09 December 2020



Secretariat

For enquiries, please contact  
**Namibia Public Health Emergency Operations Centre:**

 [PHEOC@mhss.gov.na](mailto:PHEOC@mhss.gov.na)  
 0800 100 100  
 0851 100 100