



NAMIBIA COVID-19 SITUATION REPORT NO. 268

Outbreak Name	COVID-19 outbreak	Country affected	Namibia
Date & Time	11.12.2020 17h00	Investigation start Date	13 March 2020
Prepared by	Surveillance Team		

HIGHLIGHTS/SITUATION UPDATE (11/12/2020)

- A total of **16269** cases have been recorded to-date, representing **0.7%** of the population.
- More male cases **8775 (53.9%)** were recorded compared to female cases **7494 (46.1%)**.
- Of the total confirmed cases, **641 (3.9%)** Health Workers (HWs) have tested positive for COVID-19 to-date.
 - 426 (66.5%) State; 211 (33.0%) Private, 4 (0.6%) Non-Governmental Organizations.
 - 530 (82.7%) recoveries and 3 (0.5%) deaths.

- The recovery rate now stands at **89.6%**.
- All fourteen (14) regions have reported confirmed cases; Khomas and Erongo regions reported the highest with **7575 (46.6%)** and **4307 (26.5%)** respectively.
- Of the total fatalities, **120 (75%)** are COVID-19 deaths while **40 (25%)** are COVID-19 related deaths.

TODAY

Tested 1245

Confirmed 172

Active 1524

Recovered 250

Death 0

TOTAL

Tested 172146

Confirmed 16269

Active 1524

Recovered 14582

Death 160

Table 1: Distribution of confirmed COVID-19 cases by region, 11 December 2020

Region	Total No. of cases	Active cases	Recoveries	Deaths	Deaths in 24 hours	Cumulative deaths with co-morbidities	Non-COVID deaths	Health Workers
Erongo	4307	209	4055	42	0	39	1	80
Hardap	778	26	745	7	0	5	0	23
//Kharas	814	212	596	6	0	4	0	22
Kavango East	234	23	208	3	0	2	0	24
Kavango West	8	0	7	1	0	1	0	1
Khomas	7575	795	6702	78	0	74	0	381
Kunene	65	28	35	2	0	1	0	2
Ohangwena	238	5	230	2	0	0	1	7
Omaheke	156	9	143	4	0	3	0	5
Omusati	89	7	81	1	0	0	0	6
Oshana	909	75	825	9	0	8	0	45
Oshikoto	476	19	456	0	0	0	1	11
Otjozondjupa	536	114	417	5	0	4	0	20
Zambezi	84	2	82	0	0	0	0	14
Total	16269	1524	14582	160	0	141	3	641

EPIDEMIOLOGICAL SITUATION IN NAMIBIA

Table 2: Number of people in mandatory quarantine facilities, 11 December 2020

Region	Newly quarantined 24 Hrs.	Cumulative number	Number discharged	Number in quarantine now	Truck Drivers quarantined in 24 hrs.
Erongo	0	4377	4251	126	0
Hardap	1	959	933	26	0
Kavango	0	834	815	19	0
Khomas	0	2944	2930	14	0
//Kharas	0	2928	2914	14	0
Kunene	21	976	847	129	0
Ohangwena	2	575	570	5	0
Omaheke	0	1762	1731	31	0
Omusati	2	437	426	11	0
Oshana	0	365	365	0	0
Oshikoto	87	3102	2843	259	0
Otjozondjupa	0	981	980	1	0
Zambezi	0	1089	1073	16	0
Total	113	21329	20678	651	0

- Since March 2020, **21329** people have been placed into mandatory quarantine facilities around the country.
- A total of **651** people are currently in quarantine, with **113** new admissions in the last 24 hours.

2500

- A highest peak of **2123 (13.0%)** cases was recorded during week 34 (Figure 1).
- The National Call center continues operation for 24 hours daily.

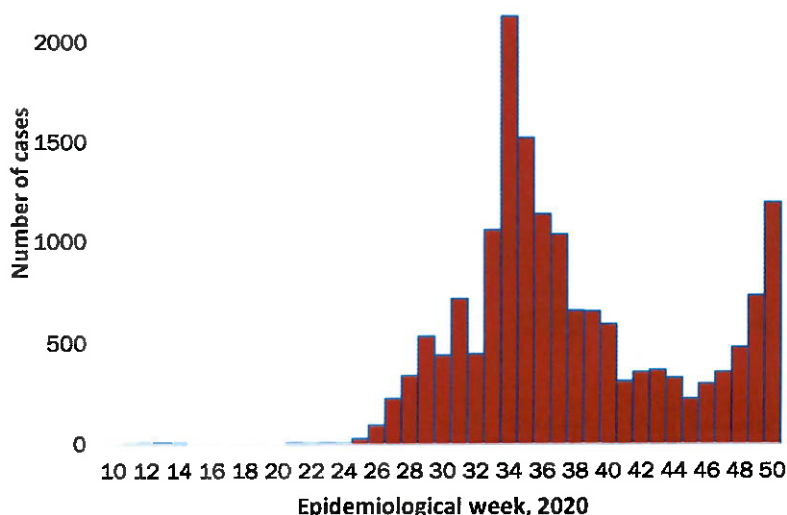


Figure 1: Epi-curve for confirmed COVID-19 cases As of 11 December 2020

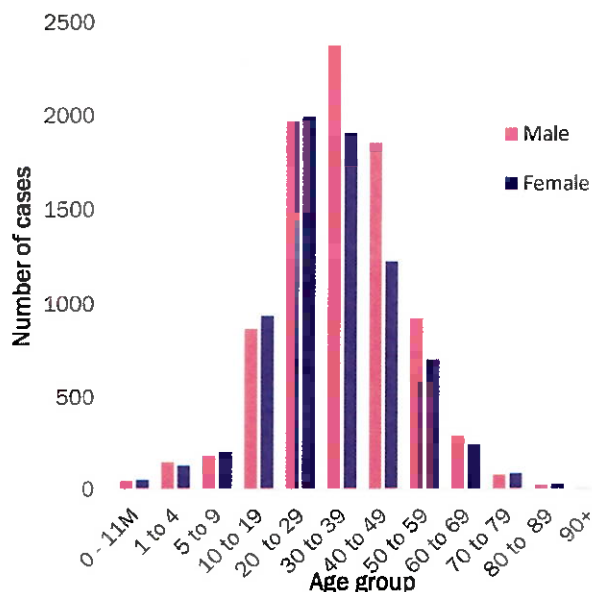


Figure 2: Age and Sex distribution of COVID-19 confirmed cases, as of 11 December 2020

- Of the total confirmed cases, **11320 (69.6%)** are in the 20-49 years age-brackets which constitutes the majority of the recorded cases.
- A total of **2191 (13.5%)** of the confirmed cases are among the 5-19 years category.
- The under 5 years age group make up **372 (2.3%)** of the total cases whereas, **759 (4.7%)** are above 60 years of age.

**Table 3: COVID-19 specimen recorded at the Laboratories
As of 11 December 2020**

VARIABLES	TOTAL
Total samples received by the Laboratory	172264
Total samples tested	164954
Total samples re-tested	7192
Total positive results	16269
Total negative results	148633
Total samples discarded	117
Invalid results	1
Total pending results	0
Indeterminant/Inconclusive	52
Suspected cases in 24 hours (excludes re-tests)	1227

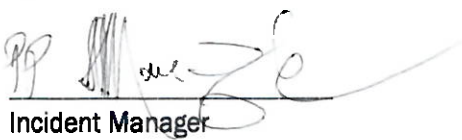
- To date, **172146** tests (including **7192** re-tests) have been conducted by NIP, Path-Care, NAMDEB, UNAM and Namib Poultry laboratories.
- Since the beginning of the outbreak, **39033** contacts of confirmed cases have been identified, **415** new contacts were identified within the last 24 hours from 11 regions.
- Cumulatively, **35849** contacts have completed their monitoring period, while a total of **4576 (28.1%)** contacts of confirmed cases have tested positive.
- Today, **3436 (100%)** out of **3436** active contacts monitored.

- PUBLIC HEALTH ACTION(S)**
- Expanded Targeted Testing is being conducted at institutions that have confirmed positive cases.
 - Virtual training on Integrated Disease Surveillance Response (IDSR) is ongoing country-wide.
 - Public awareness on COVID-19 prevention measures is ongoing.
 - The government and developmental partners continue to prioritise continuation of essential health services.

- CHALLENGES**
- Lack of isolation units and facilities in the country for special cases in closed settings such as schools, police holding cells and prisons.

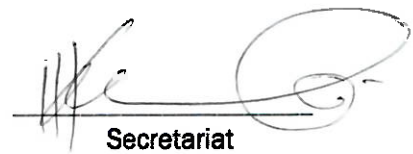
- RECOMMENDATIONS**
- Establish fully equipped isolation units and facilities for identified special cases throughout the country.

Approved



Incident Manager

11 December 2020



Secretariat

For enquiries, please contact
Namibia Public Health Emergency Operations Centre:

 PHEOC@mhss.gov.na
 0800 100 100
 0851 100 100