



NAMIBIA COVID-19 SITUATION REPORT NO. 270

Outbreak Name	COVID-19 outbreak	Country affected	Namibia
Date & Time	13.12.2020 17h00	Investigation start Date	13 March 2020
Prepared by	Surveillance Team		

HIGHLIGHTS/SITUATION UPDATE (13/12/2020)

TOTAL

Tested 175695

Confirmed 16726

Active 1723

Recovered 14837

Death 163

TODAY

Tested 1826

Confirmed 190

Active 1723

Recovered 153

Death 3

- A total of **16726** cases have been recorded to-date, representing **0.7%** of the population.
- More male cases **9001 (53.8%)** were recorded compared to female cases **7725 (46.2%)**.
- Of the total confirmed cases, **680 (4.1%)** Health Workers (HWs) have tested positive for COVID-19 to-date.
 - 458 (67.4%) State; 218 (32.1%) Private, 4 (0.6%) Non-Governmental Organizations.
 - 530 (77.9%) recoveries and 3 (0.4%) deaths.
- The recovery rate now stands at **88.7%**.
- All fourteen (14) regions have reported confirmed cases; Khomas and Erongo regions reported the highest with **7872 (47.1%)** and **4335 (25.9%)** respectively.
- Of the total fatalities, **122 (74.8%)** are COVID-19 deaths while **41 (25.2%)** are COVID-19 related deaths.
- Among the known contacts, **389 (2.3%)** new confirmed cases have been reported during the last 7 days.

Table 1: Distribution of confirmed COVID-19 cases by region, 13 December 2020

Region	Total No. of cases	Active cases	Recoveries	Deaths	Deaths in 24 hours	Cumulative deaths with co-morbidities	Non-COVID deaths	Health Workers
Erongo	4335	212	4080	42	0	39	1	82
Hardap	785	3	775	7	0	5	0	23
//Kharas	836	234	596	6	0	4	0	27
Kavango East	238	27	208	3	0	2	0	24
Kavango West	8	0	7	1	0	1	0	1
Khomas	7872	916	6875	81	3	77	0	399
Kunene	103	66	35	2	0	1	0	8
Ohangwena	238	5	230	2	0	0	1	7
Omaheke	161	14	143	4	0	3	0	6
Omusati	92	8	83	1	0	0	0	6
Oshana	930	96	825	9	0	8	0	50
Oshikoto	487	30	456	0	0	0	1	12
Otjozondjupa	557	110	442	5	0	4	0	21
Zambezi	84	2	82	0	0	0	0	14
Total	16726	1723	14837	163	3	144	3	680

EPIDEMIOLOGICAL SITUATION IN NAMIBIA

Table 2: Number of people in mandatory quarantine facilities, 13 December 2020

Region	Newly quarantined 24 Hrs.	Cumulative number	Number discharged	Number in quarantine now	Truck Drivers quarantined in 24 hrs.
Erongo	0	4422	4251	171	0
Hardap	1	960	952	8	0
Kavango	23	857	819	38	0
Khomas	38	2982	2966	16	0
//Kharas	0	2928	2914	14	0
Kunene	15	1015	853	162	0
Ohangwena	0	575	570	5	0
Omaheke	0	1762	1735	27	0
Omusati	0	443	429	14	0
Oshana	0	365	365	0	0
Oshikoto	0	3102	2843	259	0
Otjondjupa	0	981	980	1	0
Zambezi	33	1122	1073	49	0
Total	110	21514	20750	764	0

➤ Since March 2020, **21514** people have been placed into mandatory quarantine facilities around the country.

➤ A total of **764** people are currently in quarantine, with **110** new admissions in the last 24 hours.

➤ A highest peak of **2123 (12.8%)** cases was recorded during week 34 (Figure 1).

➤ The National Call center continues operation for 24 hours daily.

Today (13/12/2020) **892** calls were answered including **67** alerts.

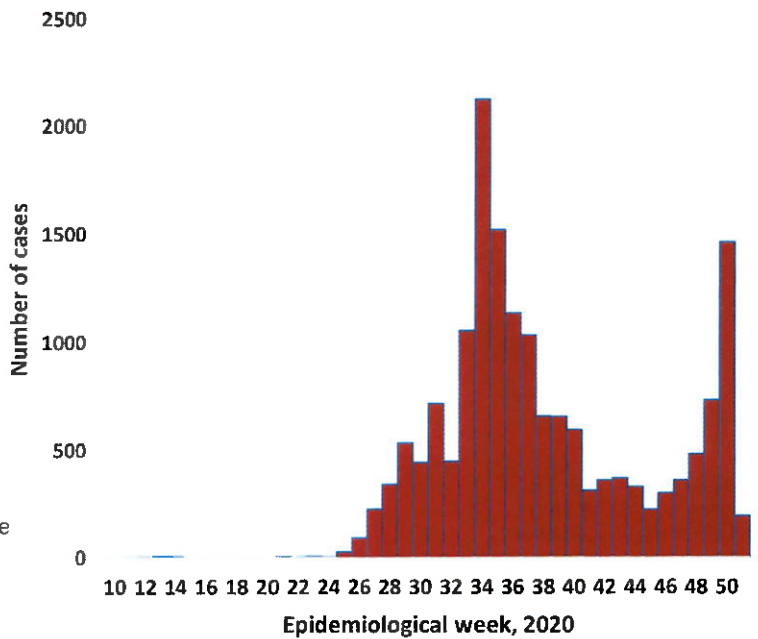


Figure 1: Epi-curve for confirmed COVID-19 cases As of 13 December 2020

➤ Of the total confirmed cases, **11656 (69.7%)** are in the 20-49 years age-brackets which constitutes the majority of the recorded cases.

➤ A total of **2222 (13.3%)** of the confirmed cases are among the 5-19 years category.

➤ The under 5 years age group make **382 (2.3%)** of the total cases whereas, **781 (4.7%)** are above 60 years of age.

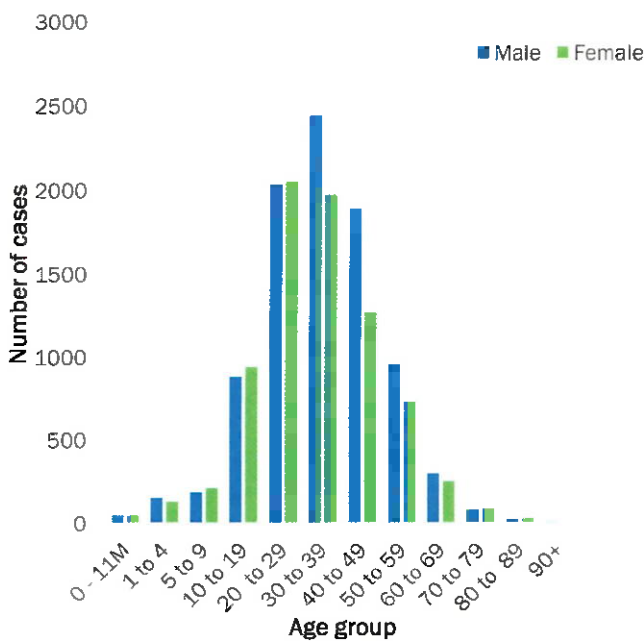


Figure 2: Age and Sex distribution of COVID-19 confirmed cases, as of 13 December 2020

Table 3: COVID-19 specimen recorded at the Laboratories, As of 13 December 2020

VARIABLES	TOTAL
Total samples received by the Laboratory	175813
Total samples tested	168439
Total samples re-tested	7256
Total positive results	16726
Total negative results	151661
Total samples discarded	117
Invalid results	1
Total pending results	0
Indeterminant/Inconclusive	52
Suspected cases in 24 hours (excludes re-tests)	1778

- To date, **175695** tests (including **7256** re-tests) have been conducted by NIP, Path-Care, NAMDEB, UNAM and Namib Poultry laboratories.
- Since the beginning of the outbreak, **40157** contacts of confirmed cases have been identified, **523** new contacts were identified within the last 24 hours from **11** regions.
- Cumulatively, **36648** contacts have completed their monitoring period, while a total of **4765 (28.5%)** contacts of confirmed cases have tested positive.
- Today, **3687 (97.9%)** out of **3767** active contacts monitored.

PUBLIC HEALTH ACTION(S)

- Virtual training on Integrated Disease Surveillance Response (IDSR) is ongoing country-wide.
- Public awareness on COVID-19 prevention measures is ongoing.
- The government and developmental partners continue to prioritise continuation of essential health services.

CHALLENGES

- Lack of isolation units and facilities in the country for special cases in closed settings such as schools, police holding cells and prisons.

RECOMMENDATIONS


- Establish fully equipped isolation units and facilities for identified special cases throughout the country.

Approved






Incident Manager

13 December 2020



Secretariat

For enquiries, please contact
Namibia Public Health Emergency Operations Centre:

 PHEOC@mhss.gov.na
 0800 100 100
 0851 100 100