



NAMIBIA COVID-19 SITUATION REPORT NO. 273

Outbreak Name	COVID-19 outbreak	Country affected	Namibia
Date & Time	16.12.2020 17h00	Investigation start Date	13 March 2020
Prepared by	Surveillance Team		

HIGHLIGHTS/SITUATION UPDATE (16/12/2020)

TOTAL	TODAY
Tested 180657	Tested 2190
Confirmed 17607	Confirmed 331
Active 2067	Active 2067
Recovered 15373	Recovered 177
Death 164	Death 0

- A total of **17607** cases have been recorded to-date, representing **0.7%** of the population.
- More male cases **9410 (53.4%)** were recorded compared to female cases **8197 (46.5%)**.
- Of the total confirmed cases, **747 (4.2%)** Health Workers (HWs) have tested positive for COVID-19 to-date.
 - 502 (67.2%) State; 241 (32.3%) Private, 4 (0.5%) Non-Governmental Organizations.
 - 574 (76.8%) recoveries and 3 (0.4%) deaths.
- The recovery rate now stands at **87.3%**.
- All fourteen (14) regions have reported confirmed cases; Khomas and Erongo regions reported the highest with **8383 (47.6%)** and **4409 (25.0%)** respectively.
- Of the total fatalities, **123 (75%)** are COVID-19 deaths while **41 (25%)** are COVID-19 related deaths.

Table 1: Distribution of confirmed COVID-19 cases by region, 16 December 2020

Region	Total No. of cases	Active cases	Recoveries	Deaths	Deaths in 24 hours	Cumulative deaths with co-morbidities	Non-COVID deaths	Health Workers
Erongo	4409	189	4176	43	0	40	1	88
Hardap	820	38	775	7	0	5	0	24
//Kharas	936	262	668	6	0	4	0	36
Kavango East	245	34	208	3	0	2	0	24
Kavango West	8	0	7	1	0	1	0	1
Khomas	8383	1111	7192	80	0	77	0	426
Kunene	116	59	56	1	0	1	0	11
Ohangwena	241	4	234	2	0	0	1	7
Omaheke	175	27	144	4	0	3	0	6
Omusati	109	22	86	1	0	0	0	8
Oshana	980	144	827	9	0	8	0	69
Oshikoto	496	19	476	0	0	0	1	12
Otjozondjupa	604	155	442	7	0	4	0	21
Zambezi	85	3	82	0	0	0	0	14
Total	17607	2067	15373	164	0	145	3	747

EPIDEMIOLOGICAL SITUATION IN NAMIBIA

Table 2: Number of people in mandatory quarantine facilities, 16 December 2020

Region	Newly quarantine d 24 Hrs.	Cumulative number	Number discharged	Number in quarantine now	Truck Drivers quarantined in 24 hrs.
Erongo	20	4458	4345	113	0
Hardap	19	985	960	25	0
Kavango	0	875	821	54	0
Khomas	0	3003	2968	35	0
//Kharas	0	2928	2914	14	0
Kunene	28	1066	944	122	0
Ohangwena	0	575	570	5	0
Omaheke	66	1830	1763	67	1
Omusati	6	456	438	18	0
Oshana	0	365	365	0	0
Oshikoto	42	3373	2923	450	0
Otjozondjupa	51	1032	981	51	0
Zambezi	2	1130	1092	38	0
Total	234	22076	21084	992	1

- Since March 2020, **22076** people have been placed into mandatory quarantine facilities around the country.
- A total of **992** people are currently in quarantine, with **234** new admissions in the last 24 hours.

- A highest peak of **2123 (12.1%)** cases was recorded during week 34 (Figure 1).
- The National Call center continues operation for 24 hours daily.

Today (16/12/2020) **1079** calls were answered including **98** alerts.

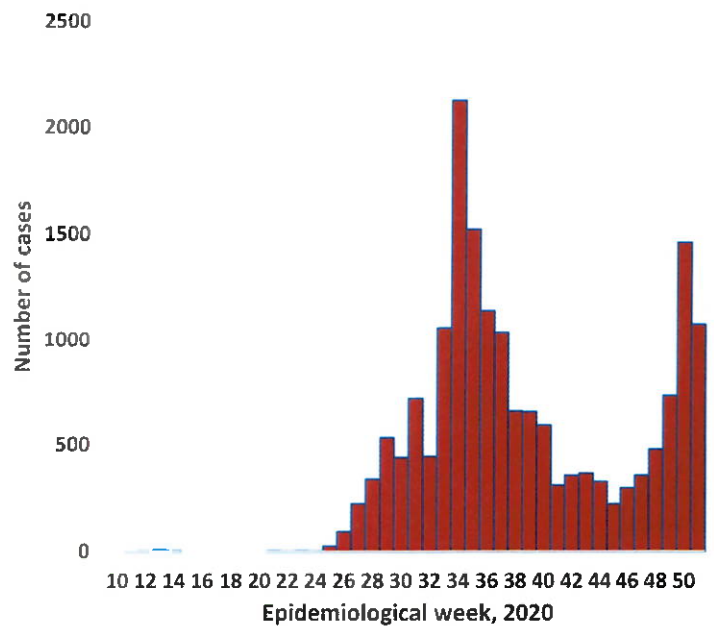


Figure 1: Epi-curve for confirmed COVID-19 cases As of 16 December 2020

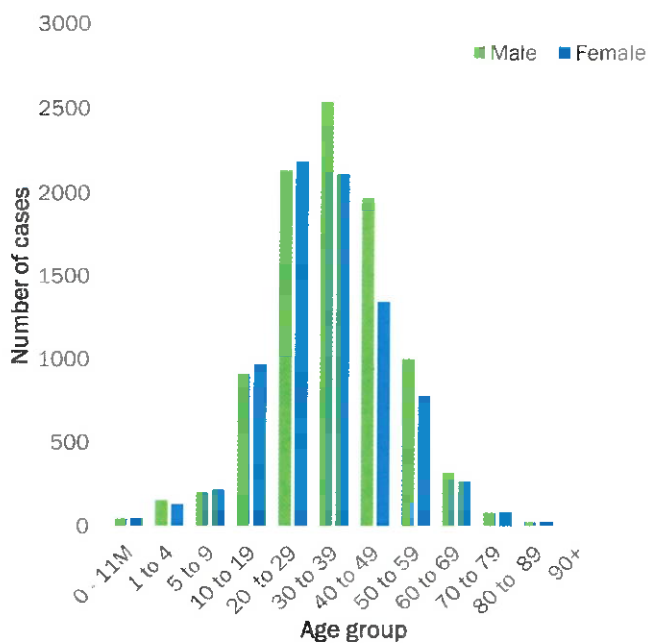


Figure 2: Age and Sex distribution of COVID-19 confirmed cases, as of 16 December 2020

- Of the total confirmed cases, **12293 (69.8%)** are in the 20-49 years age-brackets which constitutes the majority of the recorded cases.
- A total of **2308 (13.1%)** of the confirmed cases are among the 5-19 years category.
- The under 5 years age group make **397 (2.3%)** of the total cases whereas, **832 (4.7%)** are above 60 years of age.

Table 3: COVID-19 specimen recorded at the Laboratories, As of 16 December 2020

VARIABLES	TOTAL
Total samples received by the Laboratory	180775
Total samples tested	173306
Total samples re-tested	7351
Total positive results	17607
Total negative results	155647
Total samples discarded	117
Invalid results	1
Total pending results	0
Indeterminant/Inconclusive	52
Suspected cases in 24 hours (excludes re-tests)	2136

- To date, **180657** tests (including **7351** re-tests) have been conducted by NIP, Path-Care, NAMDEB, UNAM and Namib Poultry laboratories.
- Since the beginning of the outbreak, **41684** contacts of confirmed cases have been identified, **613** new contacts were identified within the last 24 hours from 13 regions.
- Cumulatively, **37289** contacts have completed their monitoring period, while a total of **4853 (27.6%)** contacts of confirmed cases have tested positive.
- Today, **4112 (99.1%)** out of **4149** active contacts monitored.

- PUBLIC HEALTH ACTION(S)**
- Virtual training on Integrated Disease Surveillance Response (IDSR) is ongoing country-wide.
 - Public awareness on COVID-19 prevention measures is ongoing.
 - The government and developmental partners continue to prioritise continuation of essential health services.

- CHALLENGES**
- Lack of isolation units and facilities in the country for special cases in closed settings such as schools, police holding cells and prisons.

- RECOMMENDATIONS**
- Establish fully equipped isolation units and facilities for identified special cases throughout the country.


Approved


Incident Manager

16 December 2020


Secretariat

For enquiries, please contact
Namibia Public Health Emergency Operations Centre:

 PHEOC@mhss.gov.na
 0800 100 100
 0851 100 100