



NAMIBIA COVID-19 SITUATION REPORT NO. 276

Outbreak Name	COVID-19 outbreak	Country affected	Namibia
Date & Time	19.12.2020 17h00	Investigation start Date	13 March 2020
Prepared by	Surveillance Team		

HIGHLIGHTS/SITUATION UPDATE (19/12/2020)

TOTAL	TODAY
Tested 185474	Tested 903
Confirmed 18714	Confirmed 277
Active 2567	Active 2567
Recovered 15967	Recovered 118
Death 177	Death 6

- A total of **18714** cases have been recorded to-date, representing **0.7%** of the population.
- More male cases **9931 (53.1%)** were recorded compared to female cases **8783 (46.9%)**.
- Of the total confirmed cases, **804 (4.3%)** Health Workers (HWs) have tested positive for COVID-19 to-date.
 - 538 (66.9%) State; 262 (32.6%) Private, 4 (0.5%) Non-Governmental Organizations.
 - 574 (71.4%) recoveries and 3 (0.4%) deaths.
- The recovery rate now stands at **85.3%**.
- All fourteen (14) regions have reported confirmed cases; Khomas and Erongo regions reported the highest with **8983 (48.0%)** and **4571 (24.4%)** respectively.
- Of the total fatalities, **135 (76.3%)** are COVID-19 deaths while **42 (23.7%)** are COVID-19 related deaths.

Table 1: Distribution of confirmed COVID-19 cases by region, 19 December 2020

Region	Total No. of cases	Active cases	Recoveries	Deaths	Deaths in 24 hours	Cumulative deaths with co-morbidities	Non-COVID deaths	Health Workers
Erongo	4571	253	4273	44	1	41	1	91
Hardap	844	44	793	7	0	5	0	25
//Karas	1005	299	700	6	0	4	0	41
Kavango East	247	36	208	3	0	2	0	24
Kavango West	8	0	7	1	0	1	0	1
Khomas	8983	1321	7577	85	4	82	0	461
Kunene	150	33	114	3	1	3	0	12
Oshana	252	15	234	2	0	0	1	7
Omaheke	186	37	144	5	0	4	0	6
Omusati	122	30	90	2	0	1	0	8
Oshana	1048	210	827	11	0	9	0	74
Oshikoto	533	55	476	1	0	1	1	16
Otjozondjupa	676	227	442	7	0	4	0	24
Zambezi	89	7	82	0	0	0	0	14
Total	18714	2567	15967	177	6	157	3	804

EPIDEMIOLOGICAL SITUATION IN NAMIBIA

Table 2: Number of people in mandatory quarantine facilities, 19 December 2020

Region	Newly quarantined 24 Hrs.	Cumulative number	Number discharged	Number in quarantine now	Truck Drivers quarantined in 24 hrs
Erongo	0	4464	4358	106	0
Hardap	2	1004	965	39	0
Kavango	12	895	868	27	0
Khomas	0	3006	2969	37	0
//Karas	0	2928	2914	14	0
Kunene	10	1133	974	159	0
Oshana	0	575	570	5	0
Omaheke	0	1830	1763	67	0
Omusati	12	468	443	25	0
Oshana	0	365	365	0	0
Oshikoto	0	3475	3040	435	0
Otjozondjupa	0	1032	981	51	0
Zambezi	0	1160	1104	56	0
Total	36	22335	21314	1021	0

- Since March 2020, **22335** people have been placed into mandatory quarantine facilities around the country.
- A total of **1021** people are currently in quarantine, with **36** new admissions in the last 24 hours.

- A highest peak of **2178 (11.6%)** cases was recorded during week 51 (Figure 1).
 - The National Call center continues operation for 24 hours daily.
- Today (19/12/2020) **926** calls were answered including **68** alerts.

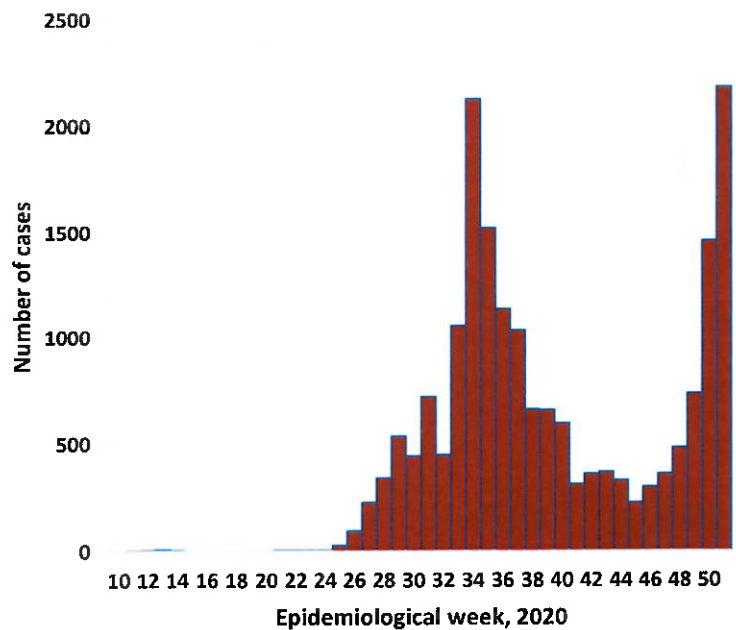


Figure 1: Epi-curve for confirmed COVID-19 cases As of 19 December 2020

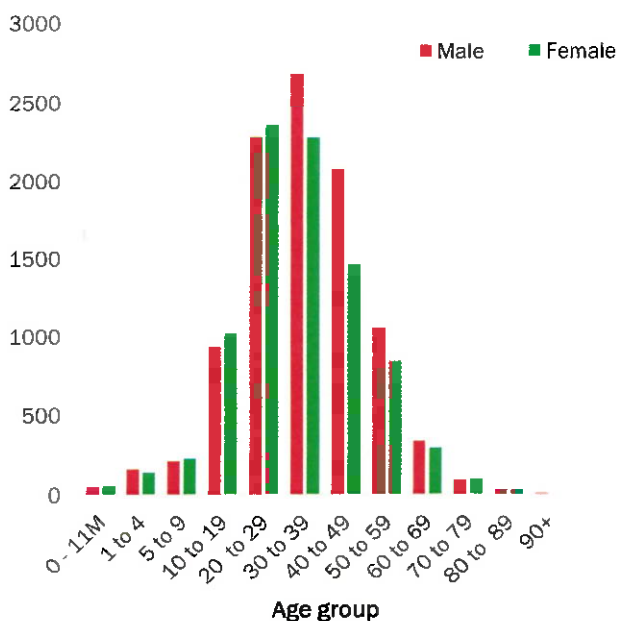


Figure 2: Age and Sex distribution of COVID-19 confirmed cases, as of 19 December 2020

- Of the total confirmed cases, **13121 (70.1%)** are in the 20-49 years age-brackets which constitutes the majority of the recorded cases.
- A total of **2397 (12.8%)** of the confirmed cases are among the 5-19 years category.
- The under 5 years age group make **411 (2.2%)** of the total cases whereas, **894 (4.7%)** are above 60 years of age.

Table 3: COVID-19 specimen recorded at the Laboratories, As of 19 December 2020

VARIABLES	TOTAL
Total samples received by the Laboratory	185592
Total samples tested	177956
Total samples re-tested	7518
Total positive results	18714
Total negative results	159190
Total samples discarded	117
Invalid results	1
Total pending results	0
Indeterminant/Inconclusive	52
Suspected cases in 24 hours (excludes re-tests)	851

- To date, **185474** tests (including **7518** re-tests) have been conducted by NIP, Path-Care, NAMDEB, UNAM and Namib Poultry laboratories.
- Since the beginning of the outbreak, **42891** contacts of confirmed cases have been identified, **233** new contacts were identified within the last 24 hours from 11 regions.
- Cumulatively, **37937** contacts have completed their monitoring period, while a total of **4985 (26.6%)** contacts of confirmed cases have tested positive.
- Today, **4303 (92.4%)** out of **4658** active contacts monitored.

PUBLIC HEALTH ACTION(S)

- Public awareness on COVID-19 prevention measures is ongoing.
- The government and developmental partners continue to prioritise continuation of essential health services.

CHALLENGES

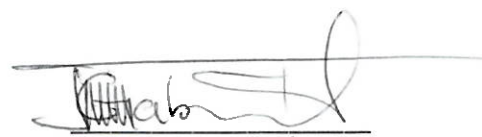
- Lack of isolation units and facilities in the country for special cases in closed settings such as schools, police holding cells and prisons.
- Non-adherence to COVID-19 prevention measures by the general public.

RECOMMENDATIONS

- Establish fully equipped isolation units and facilities for identified special cases throughout the country.
- Continue to give awareness on the importance of adhering to COVID -19 prevention measures.


Approved


 Coordination P.M.A. Lead.
 Incident Manager


 Secretariat

19 December 2020

For enquiries, please contact
 Namibia Public Health Emergency Operations Centre:

 PIEOC@mhss.gov.na
 0800 100 100
 0851 100 100