



## NAMIBIA COVID-19 SITUATION REPORT NO. 277

<b>Outbreak Name</b>	COVID-19 outbreak	<b>Country affected</b>	Namibia
<b>Date &amp; Time</b>	20.12.2020 17h00	<b>Investigation start Date</b>	13 March 2020
<b>Prepared by</b>	Surveillance Team		

### HIGHLIGHTS/SITUATION UPDATE (20/12/2020)

#### TOTAL

Tested 188153

Confirmed 19299

Active 3075

Recovered 16041

Death 180

#### TODAY

Tested 2676

Confirmed 585

Active 3075

Recovered 74

Death 3

- A total of **19299** cases have been recorded to-date, representing **0.8%** of the population.
- More male cases **10219 (53.0%)** were recorded compared to female cases **9080 (47.0%)**.
- Of the total confirmed cases, **825 (4.3%)** Health Workers (HWs) have tested positive for COVID-19 to-date.
  - 555 (67.3%) State; 266 (32.2%) Private, 4 (0.5%) Non-Governmental Organizations.
  - 574 (69.6%) recoveries and 3 (0.4%) deaths.
- The recovery rate now stands at **83.1%**.
- All fourteen (14) regions have reported confirmed cases; Khomas and Erongo regions reported the highest with **9325 (48.3%)** and **4641 (24.0%)** respectively.
- Of the total fatalities, **137 (76.1%)** are COVID-19 deaths while **43 (23.9%)** are COVID-19 related deaths.

**Table 1: Distribution of confirmed COVID-19 cases by region, 20 December 2020**

Region	Total No. of cases	Active cases	Recoveries	Cumulative Deaths	Deaths in 24 hours	Cumulative deaths with co-morbidities	Non-COVID deaths	Health Workers
Erongo	4641	323	4273	44	0	41	1	92
Hardap	856	56	793	7	0	5	0	26
//Karas	1021	311	703	7	1	5	0	42
Eravango East	253	42	208	3	0	2	0	25
Eravango West	8	0	7	1	0	1	0	1
Khomas	9325	1601	7637	87	2	82	0	475
Kunene	230	113	114	3	0	3	0	12
Oshana	252	15	234	2	0	0	1	7
Omaheke	189	29	155	5	0	4	0	6
Omusati	122	30	90	2	0	1	0	8
Oshana	1059	221	827	11	0	9	0	75
Oshikoto	538	60	476	1	0	1	1	16
Otjozondjupa	715	266	442	7	0	4	0	25
Zambezi	90	8	82	0	0	0	0	15
<b>Total</b>	<b>19299</b>	<b>3075</b>	<b>16041</b>	<b>180</b>	<b>3</b>	<b>158</b>	<b>3</b>	<b>825</b>



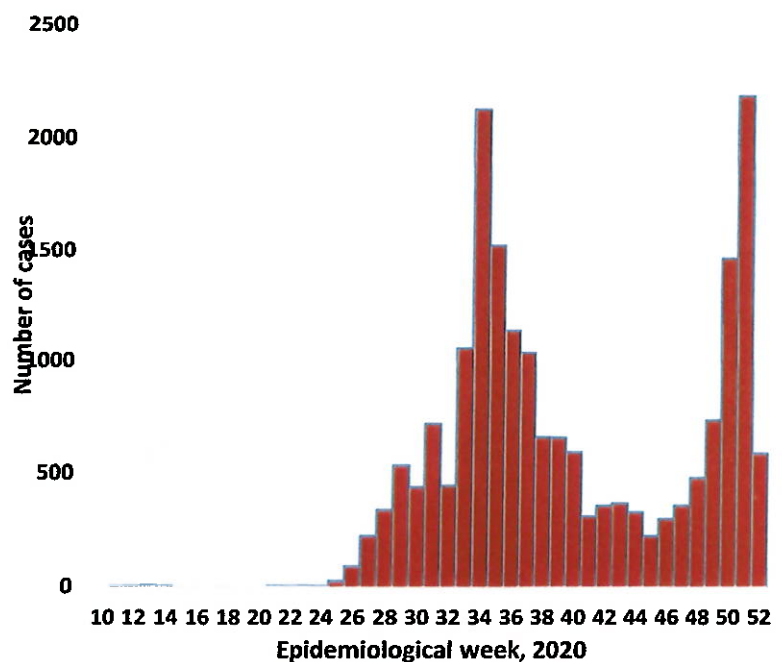
## EPIDEMIOLOGICAL SITUATION IN NAMIBIA

**Table 2: COVID-19 specimen recorded at the Laboratories  
As of 20 December 2020**

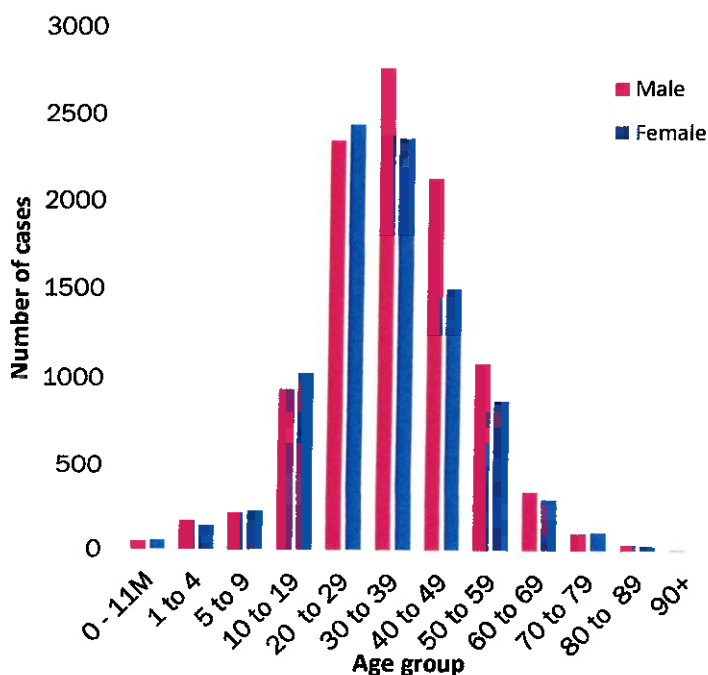
VARIABLES	TOTAL
Total samples received by the Laboratory	188271
Total samples tested	180573
Total samples re-tested	7580
Total positive results	19299
Total negative results	161220
Total samples discarded	117
Invalid results	1
Total pending results	0
Indeterminant/Inconclusive	54
Suspected cases in 24 hours (excludes re-tests)	2617

- To date, **188153** tests (including **7580** re-tests) have been conducted by NIP, Path-Care, NAMDEB, UNAM, Namib Poultry and Central Veterinary laboratories.
- Since the beginning of the outbreak, **43015** contacts of confirmed cases have been identified, **124** new contacts were identified within the last 24 hours from 12 regions.
- Cumulatively, **38099** contacts have completed their monitoring period, while a total of **5026 (26.0%)** contacts of confirmed cases have tested positive.
- Today, **4327 (93.7%)** out of **4620** active contacts monitored.

- A highest peak of **2178 (11.3%)** cases was recorded during week 51 (Figure 1).
  - The National Call center continues operation for 24 hours daily.
- Today (20/12/2020) **970** calls were answered including **80** alerts.



**Figure 1: Epi-curve for confirmed COVID-19 cases  
As of 20 December 2020**



**Figure 2: Age and Sex distribution of COVID-19 confirmed cases, as  
of 20 December 2020**

- Of the total confirmed cases, **13561 (70.3%)** are in the 20-49 years age-brackets which constitutes the majority of the recorded cases.
- A total of **2422 (12.5%)** of the confirmed cases are among the 5-19 years category.
- The under 5 years age group make **418 (2.2%)** of the total cases whereas, **940 (4.9%)** are above 60 years of age.

**Table 3: Number of people in mandatory quarantine facilities, 20 December 2020**

Region	Newly quarantined 24 Hrs.	Cumulative number	Number discharged	Number in quarantine now	Truck Drivers quarantined in 24 hrs.
Erongo	0	4464	4358	106	0
Hardap	5	1009	968	41	0
Kavango	10	905	869	36	0
Khomas	36	3042	2993	49	0
//Kharas	655	3583	3347	236	0
Kunene	0	1133	974	159	0
Ohangwena	0	575	570	5	0
Omaheke	32	1862	1820	42	0
Omusati	1	469	443	26	0
Oshana	0	365	365	0	0
Oshikoto	0	3475	3040	435	0
Otjozondjupa	0	1032	981	51	0
Zambezi	4	1164	1113	51	0
<b>Total</b>	<b>743</b>	<b>23078</b>	<b>21841</b>	<b>1237</b>	<b>0</b>

- Since March 2020, **23078** people have been placed into mandatory quarantine facilities around the country.
- A total of **1237** people are currently in quarantine, with **743** new admissions.

### PUBLIC HEALTH ACTION(S)

- Public awareness on COVID-19 prevention measures is ongoing.
- The government and developmental partners continue to prioritise continuation of essential health services.

### CHALLENGES

- Lack of isolation units and facilities in the country for special cases in closed settings such as schools, police holding cells and prisons.
- Non-adherence to COVID-19 prevention measures by the general public.

### RECOMMENDATIONS

- Establish fully equipped isolation units and facilities for identified special cases throughout the country.
- Continue to give awareness on the importance of adhering to COVID -19 prevention measures.

Approved



Incident Manager

20 December 2020



Secretariat

For enquiries, please contact  
Namibia Public Health Emergency Operations Centre;

 [PHEOC@mhss.gov.na](mailto:PHEOC@mhss.gov.na)

 0800 100 100

 0851 100 100