



NAMIBIA COVID-19 SITUATION REPORT NO. 272

Outbreak Name	COVID-19 outbreak	Country affected	Namibia
Date & Time	15.12.2020 17h00	Investigation start Date	13 March 2020
Prepared by	Surveillance Team		

HIGHLIGHTS/SITUATION UPDATE (15/12/2020)

TOTAL	TODAY
Tested 178467	Tested 1844
Confirmed 17276	Confirmed 363
Active 1913	Active 1913
Recovered 15196	Recovered 215
Death 164	Death 0

- A total of **17276** cases have been recorded to-date, representing **0.7%** of the population.
- More male cases **9259 (53.6%)** were recorded compared to female cases **8017 (46.4%)**.
- Of the total confirmed cases, **727 (4.2%)** Health Workers (HWs) have tested positive for COVID-19 to-date.
 - 492 (67.7%) State; 231 (31.8%) Private, 4 (0.6%) Non-Governmental Organizations.
 - 574 (79.0%) recoveries and 3 (0.4%) deaths.
- The recovery rate now stands at **88.0%**.
- All fourteen (14) regions have reported confirmed cases; Khomas and Erongo regions reported the highest with **8220 (47.6%)** and **4360 (25.2%)** respectively.
- Of the total fatalities, **123 (75%)** are COVID-19 deaths while **41 (25%)** are COVID-19 related deaths.

Table 1: Distribution of confirmed COVID-19 cases by region, 15 December 2020

Region	Total No. of cases	Active cases	Recoveries	Deaths	Deaths in 24 hours	Cumulative deaths with co-morbidities	Non-COVID deaths	Health Workers
Erongo	4360	167	4149	43	0	40	1	83
Hardap	812	30	775	7	0	5	0	23
//Kharas	907	273	628	6	0	4	0	36
Kavango East	245	34	208	3	0	2	0	24
Kavango West	8	0	7	1	0	1	0	1
Khomas	8220	1029	7111	80	0	77	0	420
Kunene	104	54	49	1	0	1	0	9
Ohangwena	241	5	233	2	0	0	1	7
Omaheke	162	15	143	4	0	3	0	6
Omusati	96	9	86	1	0	0	0	6
Oshana	964	128	827	9	0	8	0	65
Oshikoto	495	38	456	0	0	0	1	12
Otjozondjupa	578	129	442	7	0	4	0	21
Zambezi	84	2	82	0	0	0	0	14
Total	17276	1913	15196	164	0	145	3	727

EPIDEMIOLOGICAL SITUATION IN NAMIBIA

Table 2: Number of people in mandatory quarantine facilities, 15 December 2020

Region	Newly quarantine d 24 Hrs.	Cumulative number	Number discharged	Number in quarantine now	Truck Drivers quarantined in 24 hrs.
Erongo	16	4438	4289	149	0
Hardap	3	966	955	11	0
Kavango	0	875	821	54	0
Khomas	21	3003	2968	35	0
//Kharas	0	2928	2914	14	0
Kunene	19	1038	920	118	0
Ohangwena	0	575	570	5	0
Omaheke	0	1764	1735	29	0
Omusati	2	450	433	17	0
Oshana	0	365	365	0	0
Oshikoto	103	3331	2915	416	0
Otjondjupa	0	981	980	1	0
Zambezi	0	1128	1089	39	0
Total	164	21842	20954	888	0

- Since March 2020, **21842** people have been placed into mandatory quarantine facilities around the country.
- A total of **888** people are currently in quarantine, with **164** new admissions in the last 24 hours.

- A highest peak of **2123 (12.3%)** cases was recorded during week 34 (Figure 1).
- The National Call center continues operation for 24 hours daily.

Today (15/12/2020) **897** calls were answered including **82** alerts.

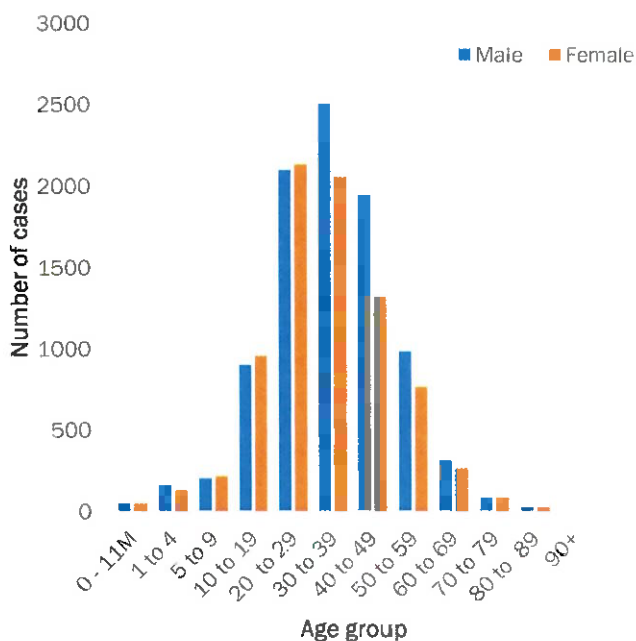


Figure 2: Age and Sex distribution of COVID-19 confirmed cases, as of 14 December 2020

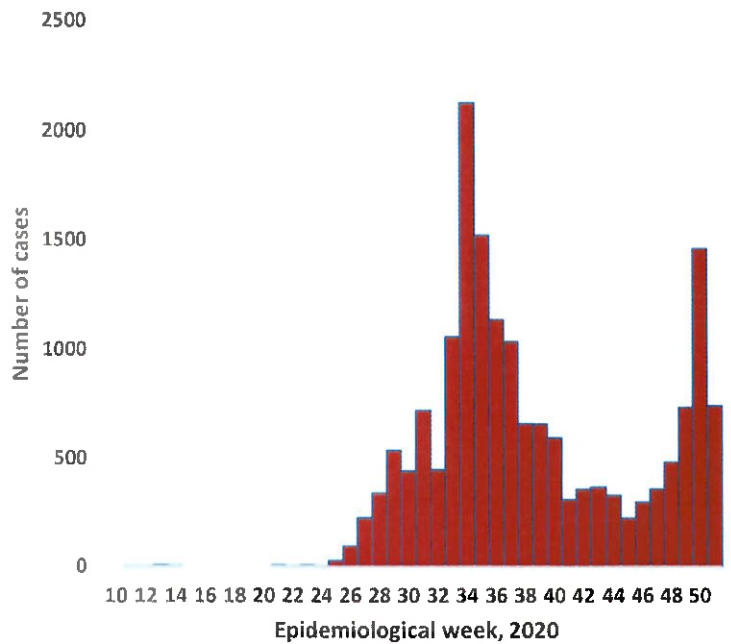


Figure 1: Epi-curve for confirmed COVID-19 cases As of 15 December 2020

- Of the total confirmed cases, **12050 (69.7%)** are in the 20-49 years age-brackets which constitutes the majority of the recorded cases.
- A total of **2277 (13.2%)** of the confirmed cases are among the 5-19 years category.
- The under 5 years age group make **391 (2.3%)** of the total cases whereas, **812 (4.7%)** are above 60 years of age.

Table 3: COVID-19 specimen recorded at the Laboratories, As of 15 December 2020

VARIABLES	TOTAL
Total samples received by the Laboratory	178585
Total samples tested	171170
Total samples re-tested	7297
Total positive results	17276
Total negative results	153842
Total samples discarded	117
Invalid results	1
Total pending results	0
Indeterminant/Inconclusive	52
Suspected cases in 24 hours (excludes re-tests)	1816

- To date, **178467** tests (including **7297** re-tests) have been conducted by NIP, Path-Care, NAMDEB, UNAM and Namib Poultry laboratories.
- Since the beginning of the outbreak, **41071** contacts of confirmed cases have been identified, **589** new contacts were identified within the last 24 hours from 11 regions.
- Cumulatively, **37108** contacts have completed their monitoring period, while a total of **4817 (27.9%)** contacts of confirmed cases have tested positive.
- Today, **3720 (99.0%)** out of **3756** active contacts monitored.

PUBLIC HEALTH ACTION(S)

- Virtual training on Integrated Disease Surveillance Response (IDSR) is ongoing country-wide.
- Public awareness on COVID-19 prevention measures is ongoing.
- The government and developmental partners continue to prioritise continuation of essential health services.

CHALLENGES

- Lack of isolation units and facilities in the country for special cases in closed settings such as schools, police holding cells and prisons.

RECOMMENDATIONS

- Establish fully equipped isolation units and facilities for identified special cases throughout the country.

Approved




Incident Manager


15 December 2020




Secretariat

For enquiries, please contact
Namibia Public Health Emergency Operations Centre:

 PHEOC@mhss.gov.na

 0800 100 100

 0851 100 100