



NAMIBIA COVID-19 SITUATION REPORT NO. 284

Outbreak Name	COVID-19 outbreak	Country affected	Namibia
Date & Time	27.12.2020 17h00	Investigation start Date	13 March 2020
Prepared by	Surveillance Team		

HIGHLIGHTS/SITUATION UPDATE (27 /12/2020)

- A total of **22287** cases have been recorded to-date, representing **0.9%** of the population.
- More male cases **11620 (52.1%)** were recorded compared to female cases **10667 (47.9%)**.
- Of the total confirmed cases, **960 (4.3%)** Health Workers (HWs) have tested positive for COVID-19 to-date.
 - 686 (71.5%) State; 270 (28.1%) Private, 4 (0.4%) Non-Governmental Organizations.
 - 747 (77.8%) recoveries and 3 (0.3%) deaths.

TODAY

Tested 1845

Confirmed 364

Active 3814

Recovered 238

Death 2

TOTAL

Tested 200151

Confirmed 22287

Active 3814

Recovered 18277

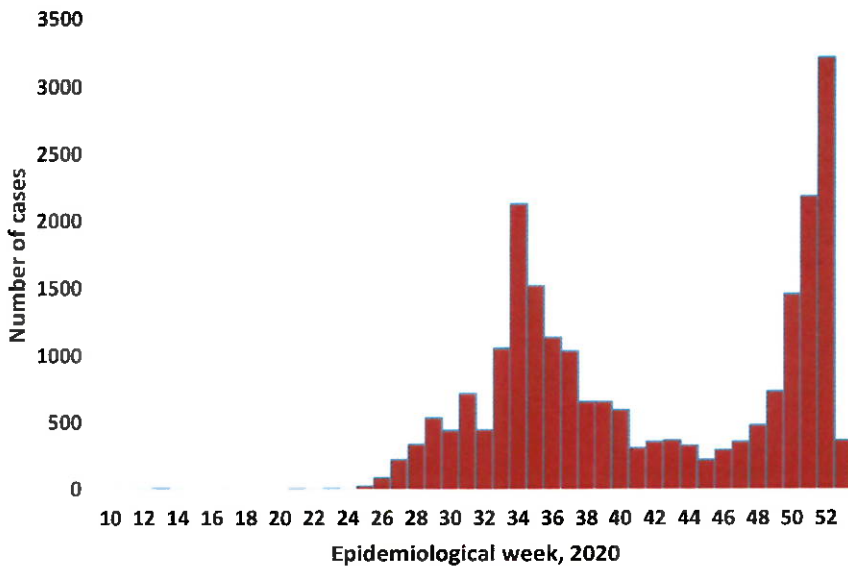
Death 193

- The recovery rate now stands at **82%**.
- All fourteen (14) regions have reported confirmed cases; Khomas and Erongo regions reported the highest with **10780 (48.4%)** and **5124 (23%)** respectively.
- Of the total fatalities, **149 (77.2%)** are COVID-19 deaths while **44 (22.8%)** are COVID-19 related

Table 1: Distribution of confirmed COVID-19 cases by region, 27 December 2020

Region	Total No. of cases	Active cases	Recoveries	Cumulative Deaths	Deaths in 24 hours	Cumulative deaths with co-morbidities	Non-COVID deaths	Health Workers
Erongo	5124	686	4389	48	0	45	1	113
Hardap	940	113	820	7	0	5	0	27
//Kharas	1223	292	924	7	0	5	0	50
Kavango East	287	45	239	3	0	2	0	25
Kavango West	11	3	7	1	0	1	0	1
Khomas	10780	1508	9179	93	2	88	0	526
Kunene	388	271	114	3	0	3	0	26
Ohangwena	282	38	241	2	0	0	1	9
Omaheke	225	38	182	5	0	4	0	11
Omusati	183	54	126	3	0	2	0	11
Oshana	1219	311	897	11	0	9	0	87
Oshikoto	634	133	499	1	0	1	1	24
Otjozondjupa	884	300	576	8	0	5	0	35
Zambezi	107	22	84	1	0	1	0	15
Total	22287	3814	18277	193	2	171	3	960

EPIDEMIOLOGICAL SITUATION IN NAMIBIA



- A highest peak of **3209 (14.4%)** cases was recorded during week 52 (Figure 1).
- The National Call center continues operation for 24 hours daily.

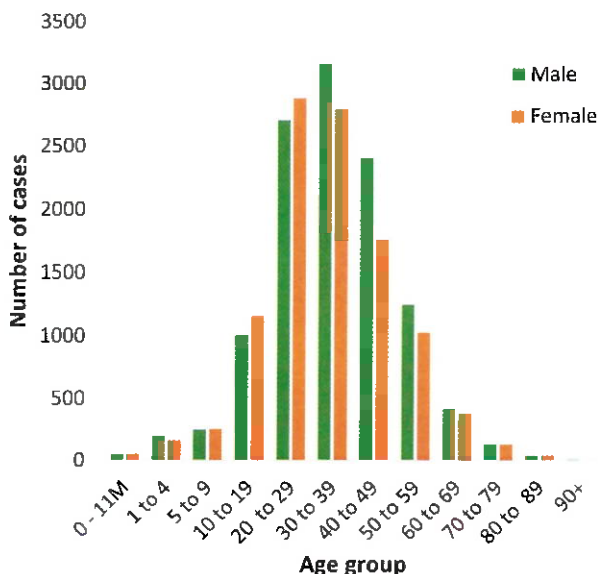
Today (27/12/2020) **808** calls were answered including **71** alerts.

Figure 1: Epi-curve for confirmed COVID-19 cases, As of 27 December 2020

Table 2: COVID-19 specimen recorded at the Laboratories As of 27 December 2020

VARIABLES	TOTAL
Total samples received by the Laboratory	200269
Total samples tested	192036
Total samples re-tested	8115
Total positive results	22287
Total negative results	169693
Total samples discarded	117
Invalid results	1
Total pending results	0
Indeterminant/Inconclusive	56
Suspected cases in 24 hours (excludes re-tests)	1692

- To date, **200151** tests (including **8115** re-tests) have been conducted by NIP, Path-Care, NAMDEB, UNAM, Namib Poultry and Central Veterinary laboratories.
- Since the beginning of the outbreak, **46000** contacts of confirmed cases have been identified, **429** new contacts were identified within the last 24 hours from 9 regions.
- Cumulatively, **39297** contacts have completed their monitoring period, while a total of **5255 (23.6%)** contacts of confirmed cases have tested positive.
- Today, **5745 (91.9%)** out of **6249** active contacts monitored.



- Of the total confirmed cases, **15703 (70.5%)** are in the 20-49 years age-brackets which constitutes the majority of the recorded cases.
- A total of **2677 (12.0%)** of the confirmed cases are among the 5-19 years category.
- The under 5 years age group make **470 (2.1%)** of the total cases whereas, **1163 (5.2%)** are above 60 years of age.

Figure 2: Age and Sex distribution of COVID-19 confirmed cases, as of 27 December 2020

Table 3: Number of people in mandatory quarantine facilities, 27 December 2020

Region	Newly quarantined 24 Hrs.	Cumulative number	Number discharged	Number in quarantine now	Truck Drivers quarantined in 24 hrs.
Erongo	0	4477	4418	59	0
Hardap	5	1059	1012	47	0
Kavango	1	906	874	32	0
Khomas	0	3063	3036	27	0
//Kharas	0	3897	3791	106	0
Kunene	14	1610	1142	468	0
Ohangwena	0	575	570	5	0
Omaheke	25	2033	1863	170	0
Omusati	0	480	456	24	0
Oshana	0	378	371	7	0
Oshikoto	0	3698	3206	492	0
Otjondjupa	0	1032	1032	0	0
Zambezi	13	1201	1163	38	0
Total	58	24409	22934	1475	0

- Since March 2020, **24409** people have been placed into mandatory quarantine facilities around the country.
- A total of **1475** people are currently in quarantine, with **58** new admissions.

PUBLIC HEALTH ACTION(S)

- Public awareness on COVID-19 prevention measures is ongoing.
- The government and developmental partners continue to prioritise continuation of essential health services.

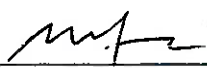
CHALLENGES

- Lack of isolation units and facilities in the regions.
- Non-adherence to COVID-19 prevention measures by the general public.

RECOMMENDATIONS

- Establish fully equipped isolation units and facilities throughout the country.
- Continue to give awareness on the importance of adhering to COVID -19 prevention measures; with the involvement of the Security Cluster.


Approved



 Incident Manager
 27 December 2020


 Secretariat

For enquiries, please contact
 Namibia Public Health Emergency Operations Centre:

 PHEOC@mhss.gov.na

 0800 100 100

 0851 100 100