



## NAMIBIA COVID-19 SITUATION REPORT NO. 296

Outbreak Name	COVID-19 outbreak	Country affected	Namibia
Date & Time	08.01.2021 17h00	Investigation start Date	13 March 2020
Prepared by	Surveillance Team		

### HIGHLIGHTS/SITUATION UPDATE (08/01/2021)



- A total of **27723** cases have been recorded to-date, representing **1.1%** of the population.
- More male cases **14117 (50.9%)** were recorded compared to female cases **13606 (49.1%)**.
- Of the total confirmed cases, **1298 (4.6%)** Health Workers (HWs) have tested positive for COVID-19 to-date.
  - 985 (75.9%) State; 309 (23.8%) Private, 4 (0.3%) Non-Governmental Organizations.
  - 960 (74.0%) recoveries and 6 (0.5%) deaths.



- The recovery rate now stands at **86%**.
- All fourteen (14) regions have reported confirmed cases; Khomas and Erongo regions reported the highest with **12816 (46.2%)** and **6056 (21.8%)** respectively.
- Of the total fatalities, **204 (81%)** are COVID-19 deaths while **47 (18.7%)** are COVID-19 related deaths.

**Table 1: Distribution of confirmed COVID-19 cases by region, 08 January 2021**

Region	Total No. of cases	Active cases	Recoveries	Cumulative Deaths	Deaths in 24 hours	Cumulative deaths with co-morbidities	Non-COVID deaths	Health Workers
Erongo	6056	789	5204	60	1	57	3	145
Hardap	1134	162	964	8	0	6	0	31
//Kharas	1743	374	1353	16	2	13	0	79
Kavango East	400	74	322	4	0	2	0	39
Kavango West	17	7	9	1	0	1	0	1
Khomas	12816	747	11957	112	0	105	0	647
Kunene	614	88	521	5	0	5	0	36
Ohangwena	374	58	313	2	0	0	1	20
Omaheke	360	80	273	6	0	4	0	24
Omusati	300	47	250	3	0	2	0	17
Oshana	1588	552	1023	13	0	11	0	127
Oshikoto	923	307	614	1	0	1	1	59
Otjozondjupa	1235	246	974	16	2	11	0	56
Zambezi	163	24	135	4	1	4	0	17
Total	27723	3555	23912	251	6	222	5	1298

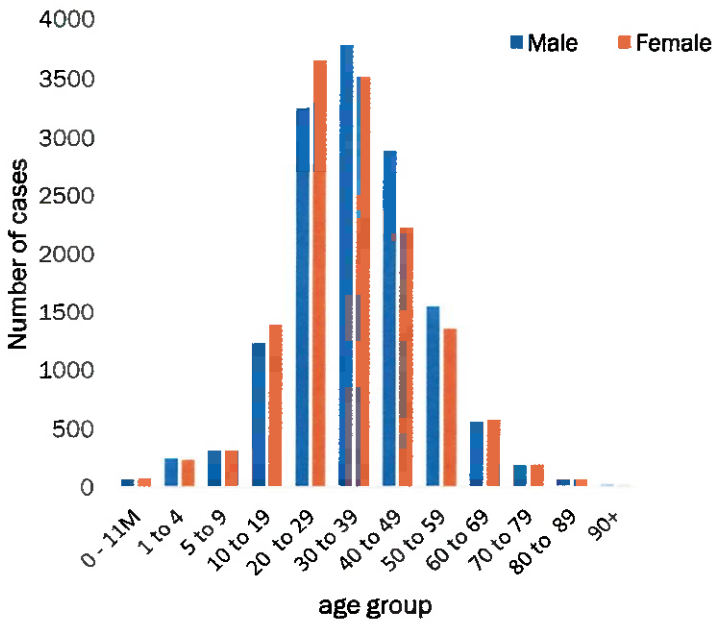


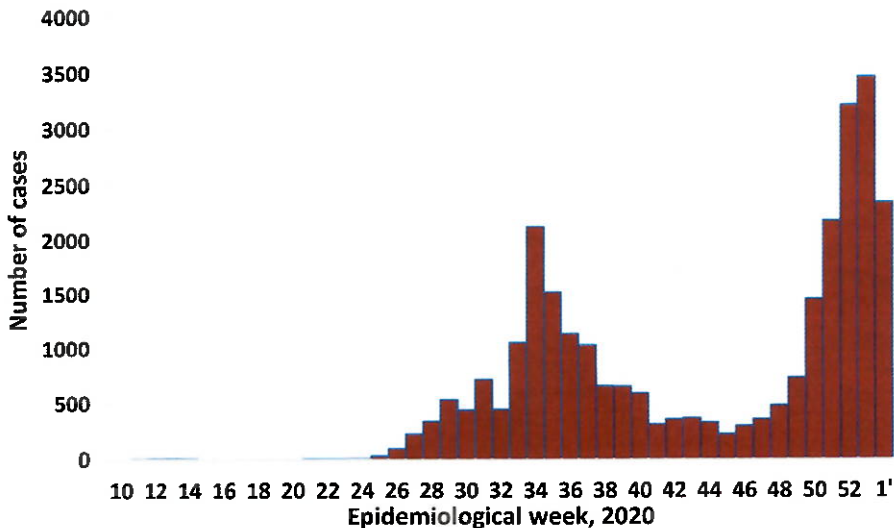
Figure 1: Age and Sex distribution of COVID-19 confirmed cases, as of 08 January 2021

- Of the total confirmed cases, **19307 (69.6%)** are in the 20-49 years age-brackets which constitutes the majority of the recorded cases.
- A total of **3241 (11.7%)** of the confirmed cases are among the 5-19 years category.
- The under 5 years age group make **616 (2.2%)** of the total cases whereas, **1656 (6.0%)** are above 60 years of age.

Table 2: Number of people in mandatory quarantine facilities 08 January 2021

Region	Newly quarantined 24 Hrs.	Cumulative number	Number discharged	Number in quarantine now
Erongo	0	4564	4518	46
Hardap	0	1161	1088	73
Kavango	0	946	914	32
Khomas	0	3099	3081	18
//Kharas	0	3897	3791	106
Kunene	14	2103	1798	305
Ohangwena	0	601	591	10
Omaheke	12	2348	2138	210
Omusati	0	512	491	21
Oshana	0	381	376	5
Oshikoto	99	4865	4064	801
Otjozondjupa	24	1095	1071	24
Zambezi	0	1267	1225	42
<b>Total</b>	<b>149</b>	<b>26839</b>	<b>25146</b>	<b>1693</b>

- Since March 2020, **26839** people have been placed into mandatory quarantine facilities around the country.
- A total of **1693** people are currently in quarantine, with **149** new admissions.



- A highest peak of **3463 (12.5%)** cases was recorded during week 53 (Figure 2).

Figure 2: Epi-curve for confirmed COVID-19 cases, As of 08 January 2021

VARIABLES	TOTAL
Total samples received by the Laboratory	223868
Total samples tested	213981
Total samples re-tested	9769
Total positive results	27723
Total negative results	186200
Total samples discarded	117
Invalid results	1
Total pending results	0
Indeterminant/Inconclusive	58
Suspected cases in 24 hours (excludes re-tests)	2577

- To date, **223750** tests (including **9769** re-tests) have been conducted by NIP, Path-Care, NAMDEB, UNAM, Namib Poultry and Central Veterinary laboratories.
- Since the beginning of the outbreak, **51608** contacts of confirmed cases have been identified, **541** new contacts were identified within the last 24 hours from 12 regions.
- Cumulatively, **44955** contacts have completed their monitoring period, while a total of **5994 (21.6%)** contacts of confirmed cases have tested positive.
- Today, **4761 (72%)** out of **6414** active contacts monitored.

- PUBLIC HEALTH ACTION(S)**
- Public awareness on COVID-19 prevention measures is ongoing.
  - The government and developmental partners continue to prioritise continuation of essential health services.

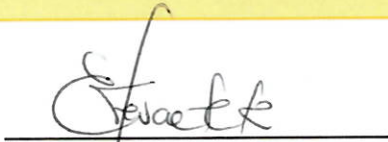
- CHALLENGES**
- Lack of isolation units and facilities in the regions.
  - Non-adherence to COVID-19 prevention measures by the general public.

- RECOMMENDATIONS**
- Establish fully equipped isolation units and facilities throughout the country.
  - Continue to give awareness on the importance of adhering to COVID -19 prevention measures; with the involvement of the Security Cluster.

APPROVED






**INCIDENT MANAGER**  
08 JANUARY 2021



**SECRETARIAT**

For enquiries, please contact  
Namibia Public Health Emergency Operations Centre:

 [PHEOC@mhss.gov.na](mailto:PHEOC@mhss.gov.na)  
 0800 100 100  
 0851 100 100