



NAMIBIA COVID-19 SITUATION REPORT NO. 298

Outbreak Name	COVID-19 outbreak	Country affected	Namibia
Date & Time	10.01.2021 17h00	Investigation start Date	13 March 2020
Prepared by	Surveillance Team		

HIGHLIGHTS/SITUATION UPDATE (10/01/2021)



- A total of **28602** cases have been recorded to-date, representing **1%** of the population.
- More male cases **14519 (51%)** were recorded compared to female cases **14083 (49%)**.
- Of the total confirmed cases, **1336 (5%)** Health Workers (HWs) have tested positive for COVID-19 to-date.
 - **1007 (75%) State; 325 (24%) Private, 4 (0.3%) Non-Governmental Organizations.**
 - **960 (72%) recoveries and 6 (0.5%) deaths.**
- The recovery rate now stands at **86%**.
- All fourteen (14) regions have reported confirmed cases; Khomas and Erongo regions reported the highest with **13006 (46%)** and **6219 (22%)** respectively.
- Of the total fatalities, **213 (82%)** are COVID-19 deaths while **48 (18%)** are COVID-19 related deaths.

Table 1: Distribution of confirmed COVID-19 cases by region, 10 January 2021

Region	Total No. of cases	Active cases	Recoveries	Cumulative Deaths	Deaths in 24 hours	Cumulative deaths with co-morbidities	Non-COVID deaths	Health Workers
Erongo	6219	641	5513	62	2	59	3	150
Hardap	1203	216	979	8	0	6	0	32
//Kharas	1790	395	1378	17	0	14	0	81
Kavango East	443	117	322	4	0	2	0	44
Kavango West	17	7	9	1	0	1	0	1
Khomas	13006	759	12129	118	4	110	0	651
Kunene	658	132	521	5	0	5	0	37
Ohangwena	407	91	313	2	0	0	1	21
Omaheke	371	69	295	6	0	4	0	24
Omusati	346	86	257	3	0	2	0	19
Oshana	1687	651	1023	13	0	11	0	135
Oshikoto	974	358	614	1	0	1	1	64
Otjozondjupa	1272	282	974	17	1	12	0	59
Zambezi	209	70	135	4	0	4	0	18
Total	28602	3874	24462	261	7	231	5	1336

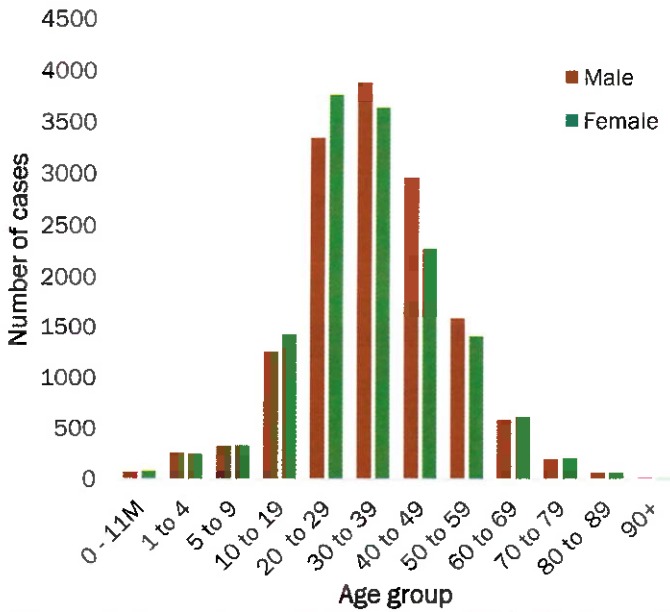


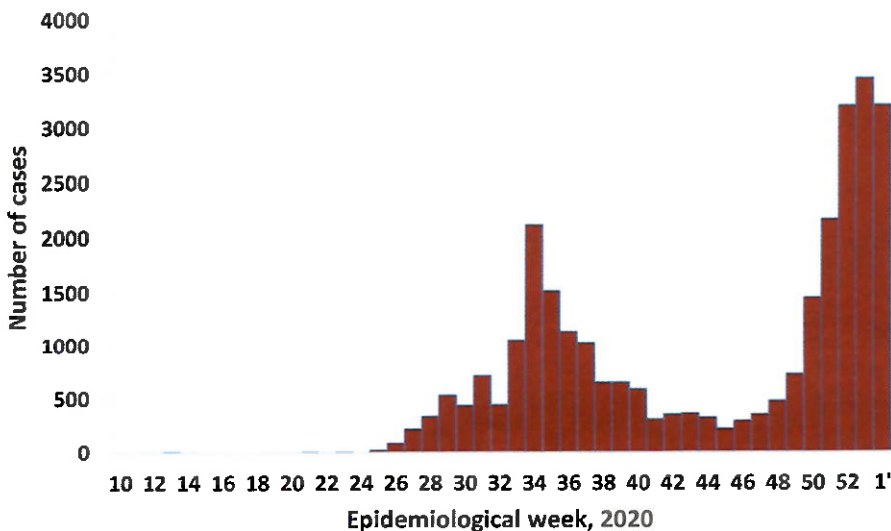
Figure 1: Age and Sex distribution of COVID-19 confirmed cases, as of 10 January 2021

- Of the total confirmed cases, **19878 (69%)** are in the 20-49 years age-brackets which constitutes the majority of the recorded cases.
- A total of **3339 (12%)** of the confirmed cases are among the 5-19 years category.
- The under 5 years age group make **645 (2%)** of the total cases whereas, **1745 (6%)** are above 60 years of age.

Table 2: Number of people in mandatory quarantine facilities 10 January 2021

Region	Newly quarantined 24 Hrs.	Cumulative number	Number discharged	Number in quarantine now
Erongo	2	4566	4520	46
Hardap	1	1177	1105	72
Kavango	1	975	925	50
Khomas	21	3120	3096	24
//Kharas	501	4398	3986	412
Kunene	26	2181	1912	269
Ohangwena	0	601	591	10
Omaheke	0	2394	2168	226
Omusati	0	513	495	18
Oshana	0	381	376	5
Oshikoto	0	4865	4064	801
Otjozondjupa	0	1095	1071	24
Zambezi	0	1267	1225	42
Total	552	27533	25534	1999

- Since March 2020, **27533** people have been placed into mandatory quarantine facilities around the country.
- A total of **1999** people are currently in quarantine, with **552** new admissions.



- A highest peak of **3463 (12%)** cases was recorded during week 53 (Figure 2).

Figure 2: Epi-curve for confirmed COVID-19 cases, As of 10 January 2021

VARIABLES	TOTAL
Total samples received by the Laboratory	228023
Total samples tested	217809
Total samples re-tested	10096
Total positive results	28602
Total negative results	189149
Total samples discarded	117
Invalid results	1
Total pending results	0
Indeterminant/Inconclusive	58
Suspected cases in 24 hours (excludes re-tests)	1338

- To date, **227905** tests (including **10096** re-tests) have been conducted by NIP, Path-Care, NAMDEB, UNAM, Namib Poultry and Central Veterinary laboratories.
- Since the beginning of the outbreak, **52352** contacts of confirmed cases have been identified, **385** new contacts were identified within the last 24 hours from 11 regions.
- Cumulatively, **45569** contacts have completed their monitoring period, while a total of **6143 (21%)** contacts of confirmed cases have tested positive.
- Today, **4798 (73%)** out of **6544** active contacts monitored.

PUBLIC HEALTH ACTION(S)

- Public awareness on COVID-19 prevention measures is ongoing.
- The government and developmental partners continue to prioritise continuation of essential health services.

CHALLENGES

- Lack of isolation units and facilities in the regions.
- Non-adherence to COVID-19 prevention measures by the general public.

RECOMMENDATIONS

- Establish fully equipped isolation units and facilities throughout the country.
- Continue to give awareness on the importance of adhering to COVID -19 prevention measures; with the involvement of the Security Cluster.

APPROVED






INCIDENT MANAGER
10 JANUARY 2021



SECRETARIAT

For enquiries, please contact
Namibia Public Health Emergency Operations Centre:

 PHEOC@mhss.gov.na
 0800 100 100
 0851 100 100