



NAMIBIA COVID-19 SITUATION REPORT NO. 326

Outbreak Name	COVID-19 outbreak	Country affected	Namibia
Date & Time	07.02.2021 17h00	Investigation start Date	13 March 2020
Prepared by	Surveillance Team		

HIGHLIGHTS/SITUATION UPDATE (07/02/2021)

TOTAL

Tested 272620
Confirmed 35070
Active 1115
Recovered 33573
Death 375

TODAY

Tested 867
Confirmed 97
Active 1115
Recovered 119
Death 0

- A total of **35070** cases have been recorded to-date, representing **1%** of the population.
- More male cases **17767 (51%)** were recorded compared to female cases **17303 (49%)**.
- Of the total confirmed cases, **1657 (5%)** Health Workers (HWs) have tested positive for COVID-19 to-date.
 - 1272 (77%) State; 377 (23%) Private, 4 (0.2%) Non-Governmental Organizations.
 - 1598 (97%) recoveries and 6 (0.4%) deaths.
- The recovery rate now stands at **96%**.
- All fourteen (14) regions have reported confirmed cases; Khomas and Erongo regions reported the highest with **14584 (42%)** and **7127 (20%)** respectively.
- Of the total fatalities, **304 (81%)** are COVID-19 deaths while **71 (19%)** are COVID-19 related deaths.

Table 1: Distribution of confirmed COVID-19 cases by region, 07 February 2021

Region	Total No. of cases	Active cases	Recoveries	Cumulative Deaths	Cumulative deaths with co-morbidities	Non-COVID deaths	Health Workers
Erongo	7127	227	6816	80	77	4	185
Hardap	1444	16	1416	12	12	0	35
//Kharas	2278	27	2228	22	18	0	103
Kavango East	910	223	676	11	8	0	85
Kavango West	68	33	33	2	2	0	1
Khomas	14584	89	14343	153	143	0	732
Kunene	878	24	849	5	5	0	45
Ohangwena	634	34	586	12	9	2	38
Omaheke	694	55	630	9	6	0	35
Omusati	614	19	591	4	2	0	29
Oshana	2318	37	2258	23	18	0	168
Oshikoto	1350	137	1206	6	6	1	90
Otjozondjupa	1709	59	1621	29	22	0	81
Zambezi	462	135	320	7	5	0	30
Total	35070	1115	33573	375	333	7	1657

**Table 2: COVID-19 specimen recorded at the Laboratories
As of 07 February 2021**

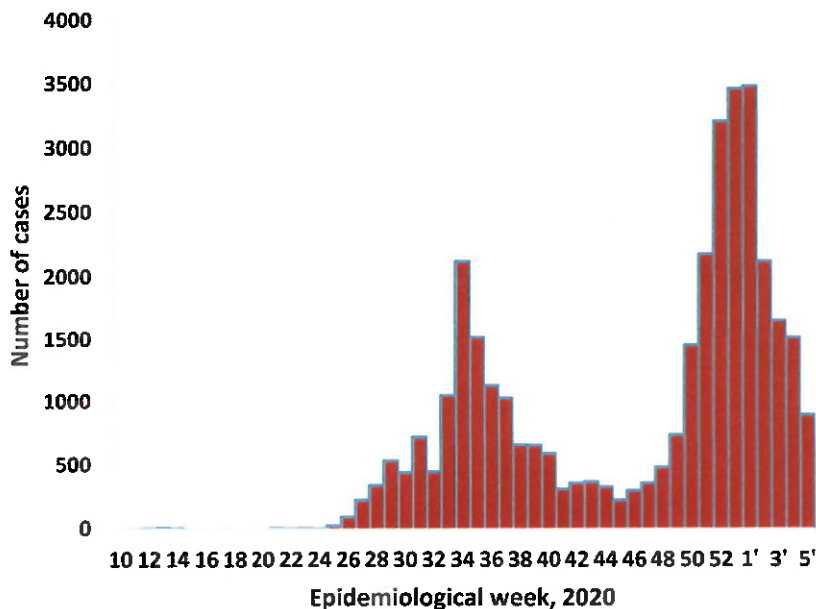
VARIABLES	TOTAL
Total samples received by the Laboratory	272737
Total samples tested	261261
Total samples re-tested	11359
Total positive results	35070
Total negative results	226138
Total samples discarded	117
Invalid results	0
Total pending results	46
Indeterminant/Inconclusive	7
Suspected cases in 24 hours (excludes re-tests)	859

- To date, **272620** tests (including **11359** re-tests) have been conducted by NIP, Path-Care, NAMDEB, UNAM, Namib Poultry and Central Veterinary laboratories.
- Since the beginning of the outbreak, **63539** contacts of confirmed cases have been identified, **105** new contacts were identified within the last 24 hours from 10 regions.
- Cumulatively, **59204** contacts have completed their monitoring period, while a total of **8024 (23%)** contacts of confirmed cases have tested positive.
- Today, **259 (7%)** out of **3799** active contacts monitored.

Table 3: Number of people in mandatory quarantine facilities, 07 February 2021

Region	Newly quarantined 24 Hrs.	Cumulative number	Number discharged	Number in quarantine now
Erongo	0	5158	4933	225
Hardap	0	1316	1303	13
Kavango	0	1064	1032	32
Khomas	0	3159	3147	12
//Kharas	0	4760	4637	123
Kunene	25	2732	2643	89
Ohangwena	0	616	610	6
Omaheke	0	3262	3099	163
Omusati	2	543	541	2
Oshana	0	394	393	1
Oshikoto	12	6589	6118	471
Otjozondjupa	0	1334	1321	13
Zambezi	1	1334	1320	14
Total	40	32261	31097	1164

- Since March 2020, **32261** people have been placed into mandatory quarantine facilities around the country.
- A total of **1164** people are currently in quarantine, with **40** new admissions.



- A highest peak of **3485 (10%)** cases was recorded during week 53 (Figure 1).

The National Call Center continues operations for 24 hours daily.

Today (07/02/2021), **683** calls were answered including **68** alerts.

Figure 1: Epi-curve for confirmed COVID-19 cases, As of 07 February 2021

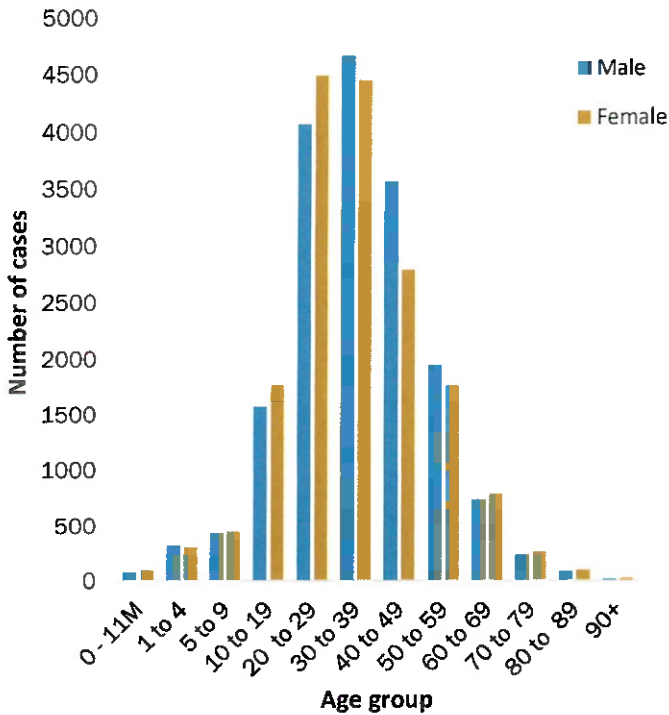


Figure 2: Age and Sex distribution of COVID-19 confirmed cases, as of 07 February 2021

- Of the total confirmed cases, **24031 (69%)** are in the 20-49 years age-brackets which constitutes the majority of the recorded cases.
- A total of **4233 (12%)** of the confirmed cases are among the 5-19 years category.
- The under 5 years age group make **817 (2%)** of the total cases whereas, **2276 (6%)** are above 60 years of age.

PUBLIC HEALTH ACTION(S)

- Mechanisms are underway on how to roll out the vaccine nationwide once it is made available.
- Public awareness on COVID-19 prevention measures is ongoing.
- The government and developmental partners continue to prioritise continuation of essential health services.

CHALLENGES

- Non-adherence to COVID-19 prevention measures by the general public.

RECOMMENDATIONS

- Continue to give awareness on the importance of adhering to COVID -19 prevention measures; with the involvement of the Security Cluster.

APPROVED






INCIDENT MANAGER
 07 February 2021



SECRETARIAT

For enquiries, please contact
 Namibia Public Health Emergency Operations Centre;

 PHEOC@mhss.gov.na
 0800 100 100
 0851 100 100