



NAMIBIA COVID-19 SITUATION REPORT NO. 340

Outbreak Name	COVID-19 outbreak	Country affected	Namibia
Date & Time	21.02.2021 17h00	Investigation start Date	13 March 2020
Prepared by	Surveillance Team		

HIGHLIGHTS/SITUATION UPDATE (21/02/2021)

TOTAL

TODAY

Tested 291119

Confirmed 37742

Tested 1248

Confirmed 259

Active 2055

Recoveries 35273

Active 2055

Recoveries 183

Death 406

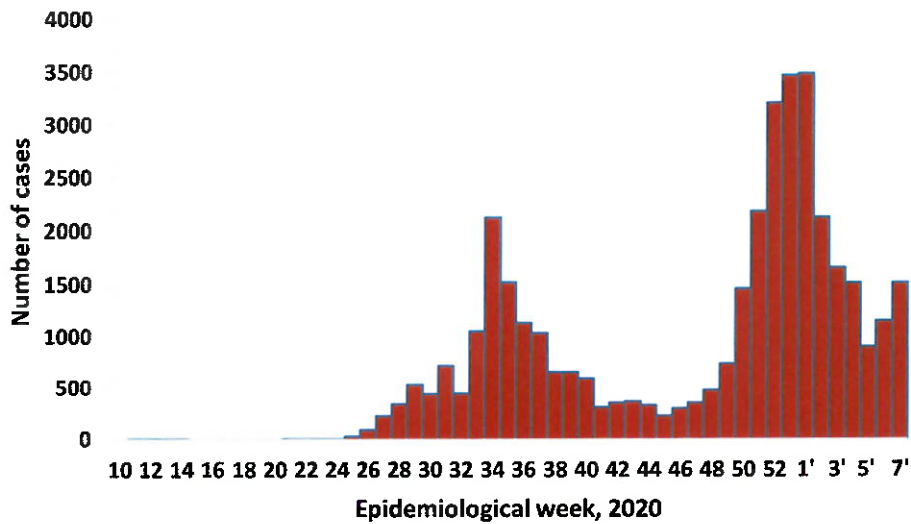
Death 4

- A total of **37742** cases have been recorded to-date, representing **2%** of the population.
- More male cases **19232 (51%)** were recorded compared to female cases **18510 (49%)**.
- Of the total confirmed cases, **1717 (5%)** Health Workers (HWs) have tested positive for COVID-19 to-date.
 - 1325 (77%) State; 384 (22%) Private, 4 (0.2%) Non-Governmental Organizations.
 - 1648 (96%) recoveries and 6 (0.4%) deaths.
- The recovery rate now stands at **93%**.
- All fourteen (14) regions have reported confirmed cases; *Khomas and Erongo* regions reported the highest with **15008 (40%)** and **7349 (19%)** respectively.
- Of the total fatalities, **322 (79%)** are COVID-19 deaths while **84 (21%)** are COVID-19 related deaths.

Table 1: Distribution of confirmed COVID-19 cases by region, 21 February 2021

Region	Total No. of cases	Active cases	Recoveries	Cumulative Deaths	Cumulative deaths with co-morbidities	Non-COVID deaths	Health Workers
Erongo	7349	173	7085	87	83	4	189
Hardap	1534	76	1442	16	13	0	35
//Kharas	2366	62	2277	26	22	0	104
Kavango East	1214	313	888	13	9	0	89
Kavango West	155	12	141	2	2	0	1
Khomas	15008	89	14764	156	145	0	748
Kunene	909	52	849	8	8	0	47
Ohangwena	745	73	658	12	9	2	45
Omaheke	748	23	716	9	6	0	35
Omusati	851	143	704	4	2	0	30
Oshana	2478	147	2306	25	20	0	178
Oshikoto	2010	590	1409	9	9	2	94
Otjozondjupa	1853	108	1714	31	24	0	89
Zambezi	522	194	320	8	6	0	33
Total	37742	2055	35273	406	358	8	1717

EPIDEMIOLOGICAL SITUATION IN NAMIBIA



➤ A highest peak of **3485 (9%)** cases was recorded during week 54 (Figure 1).

The National Call Center continues operations for 24 hours daily.

Today (21/02/2021), **328** calls were answered including **49** alerts.

Figure 1: Epi-curve for confirmed COVID-19 cases, As of 21 February 2021

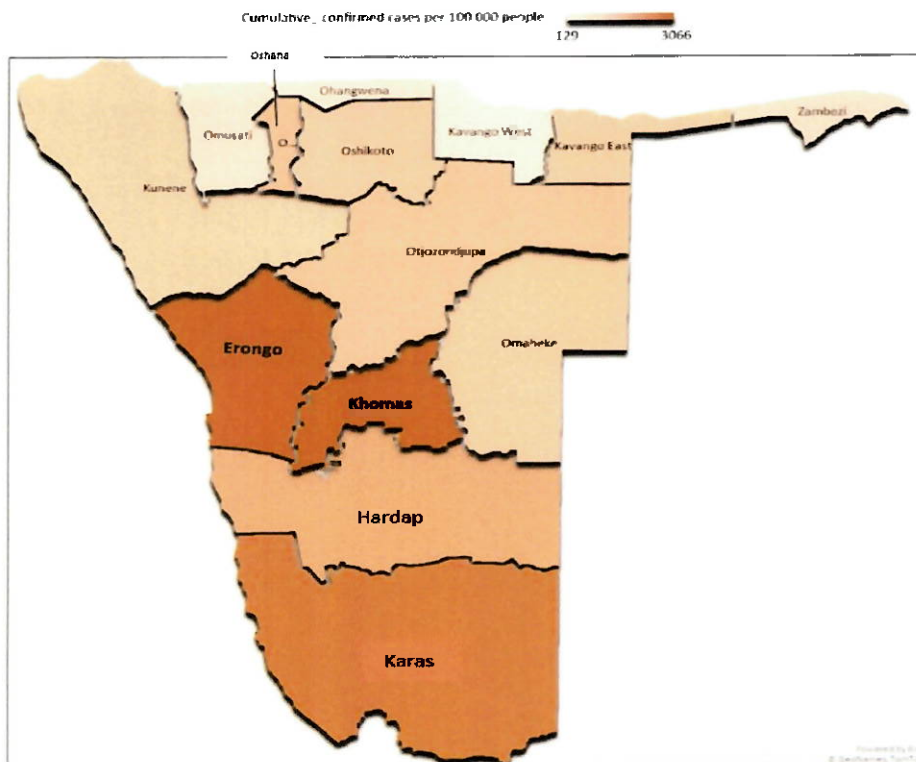


Figure 2: Distribution of cumulative confirmed cases per 100 000 by region, As of 21 February 2021

- Of the total confirmed cases, **25205 (67%)** are in the 20-49 years age-brackets which constitutes the majority of the recorded cases.
- A total of **5370 (14%)** of the confirmed cases are among the 5-19 years category.
- The under 5 years age group make **862 (2%)** of the total cases whereas, **2379 (6%)** are above 60 years of age.

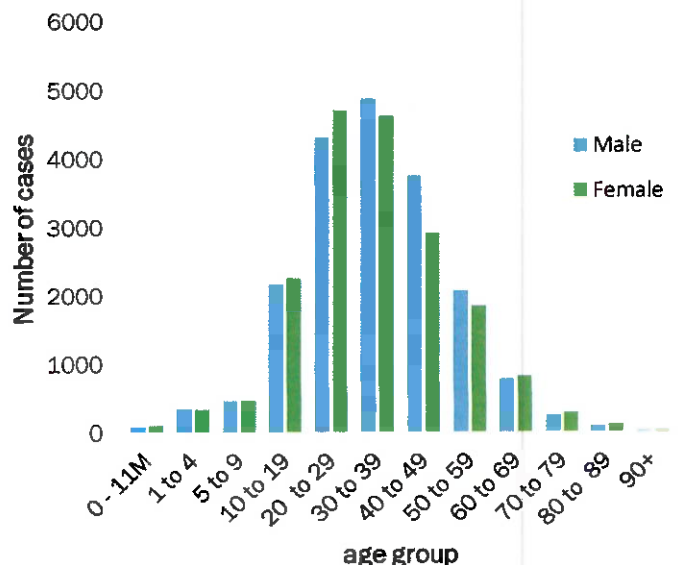


Figure 3: Age and Sex distribution of COVID-19 confirmed cases, as of 21 February 2021

**Table 2: COVID-19 specimen recorded at the Laboratories
As of 21 February 2021**

VARIABLES	TOTAL
Total samples received by the Laboratory	291236
Total samples tested	279633
Total samples re-tested	11486
Total positive results	37742
Total negative results	241838
Total samples discarded	117
Invalid results	0
Total pending results	46
Indeterminant/Inconclusive	7
Suspected cases in 24 hours (excludes re-tests)	1247

- To date, **291119** tests (including **11486** re-tests) have been conducted by NIP, Path-Care, NAMDEB, UNAM, Namib Poultry and Central Veterinary laboratories.
- Since the beginning of the outbreak, **68100** contacts of confirmed cases have been identified, **100** new contacts were identified within the last 24 hours from 12 regions.
- Cumulatively, **63450** contacts have completed their monitoring period, while a total of **9086 (24%)** contacts of confirmed cases have tested positive.
- Today, **2051 (49%)** out of **4203** active contacts monitored.

Table 3: Number of people in mandatory quarantine facilities, 21 February 2021

Region	Newly quarantined 24 Hrs.	Cumulative number	Number discharged	Number in quarantine now
Erongo	0	5158	4933	225
Hardap	0	1382	1358	24
Kavango	0	1107	1078	29
Khomas	1	3211	3205	6
//Kharas	0	4760	4637	123
Kunene	0	2863	2777	86
Ohangwena	0	631	628	3
Omaheke	0	3639	3570	69
Omusati	2	551	544	7
Oshana	0	399	399	0
Oshikoto	0	8309	6875	1434
Otjozondjupa	0	1358	1334	24
Zambezi	14	1362	1334	28
Total	17	34730	32672	2058

- Since March 2020, **34730** people have been placed into mandatory quarantine facilities around the country.
- A total of **2058** people are currently in quarantine, with **17** new admissions.

PUBLIC HEALTH ACTION(S)

- Mechanisms are underway on how to roll out the vaccine nationwide once it is made available.
- The government and developmental partners continue to prioritise the continuation of essential health services.

CHALLENGES

- Non-adherence to COVID-19 prevention measures by the general public.

RECOMMENDATIONS

- Continue to give awareness on the importance of adhering to COVID -19 prevention measures; with the involvement of the Security Cluster.

APPROVED


INCIDENT MANAGER
21 FEBRUARY 2021


SECRETARIAT