



NAMIBIA COVID-19 SITUATION REPORT NO. 359

Outbreak Name	COVID-19 outbreak	Country affected	Namibia
Date & Time	12.03.2021 17h00	Investigation start Date	13 March 2020
Prepared by	Surveillance Team		

HIGHLIGHTS/SITUATION UPDATE (12/03/2021)

TOTAL

Tested 318061

Confirmed 41025

Active 2295

Recovered 38264

Death 458

TODAY

Tested 1525

Confirmed 215

Active 2295

Recovered 47

Death 2

- A total of **41025** cases have been recorded to-date, representing **2%** of the population.
- More male cases **20747 (51%)** were recorded compared to female cases **20278 (49%)**.
- Of the total confirmed cases, **1845 (4%)** are Health Workers (HWs).
 - 1443 (78%) State; 398 (22%) Private, 4 (0.2%) Non-Governmental Organizations.
 - 1749 (95%) recoveries and 6 (0.3%) deaths.
- The recovery rate now stands at **93%**.
- All fourteen (14) regions have reported confirmed cases; *Khomas* and *Erongo* regions reported the highest with **15695 (38%)** and **7594 (19%)** respectively.
- Of the total fatalities, **364 (79%)** are COVID-19 deaths while **94 (21%)** are COVID-19 related deaths.

Table 1: Distribution of confirmed COVID-19 cases by region, 12 March 2021

Region	Total No. of cases	Active cases	Recoveries	Cumulative Deaths	Cumulative deaths with co-morbidities	Non-COVID deaths	Health Workers
Erongo	7594	230	7267	93	89	4	203
Hardap	1681	78	1582	21	16	0	37
//Kharas	2583	79	2473	31	26	0	117
Kavango East	1566	287	1261	18	14	0	98
Kavango West	172	8	162	2	2	0	8
Khomas	15695	402	15127	166	153	0	773
Kunene	976	13	954	9	9	0	52
Ohangwena	992	182	795	13	10	2	48
Omaheke	943	105	827	11	8	0	43
Omusati	1105	91	1007	7	4	0	31
Oshana	2607	230	2348	29	21	0	198
Oshikoto	2253	102	2138	11	11	2	106
Otjozondjupa	2237	196	2003	38	29	0	96
Zambezi	621	292	320	9	6	0	35
Total	41025	2295	38264	458	398	8	1845

EPIDEMIOLOGICAL SITUATION IN NAMIBIA

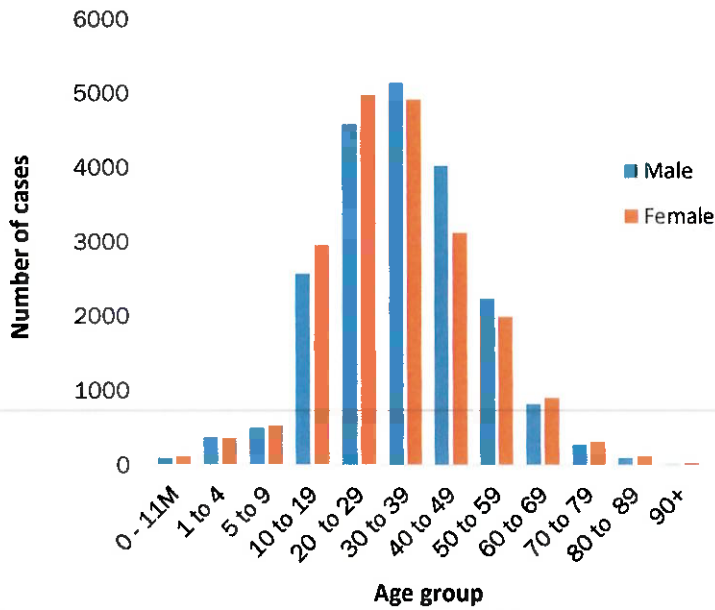


Figure 1: Age and Sex distribution of COVID-19 confirmed cases 12 March 2021

- Of the total confirmed cases, **26759 (65%)** are in the 20-49 years age-brackets which constitutes the majority of the recorded cases.
- A total of **6540 (16%)** of the confirmed cases are among the 5-19 years category.
- The under 5 years age group make up **927 (2%)** of the total cases whereas, **2572 (6%)** are above 60 years of age.

Table 2: COVID-19 specimen recorded at the Laboratories 12 March 2021

VARIABLES	TOTAL
Total samples received by the Laboratory	318178
Total samples tested	306413
Total samples re-tested	11648
Total positive results	41025
Total negative results	265335
Total samples discarded	117
Invalid results	0
Total pending results	46
Indeterminant/Inconclusive	7
Suspected cases in 24 hours (excludes re-tests)	1514

- To date, **318061** tests (including **11648** re-tests) have been conducted by NIP, Path-Care, NAMDEB, UNAM, Namib Poultry, Diagno, NAMPath and Central Veterinary laboratories.
- Since the beginning of the outbreak, **74130** contacts of confirmed cases have been identified, **217** new contacts were identified within the last 24 hours from 9 regions.
- Cumulatively, **70024** contacts have completed their monitoring period, while a total of **10274 (25%)** contacts of confirmed cases have tested positive.
- Today, **1313 (34%)** out of **3855** active contacts monitored.

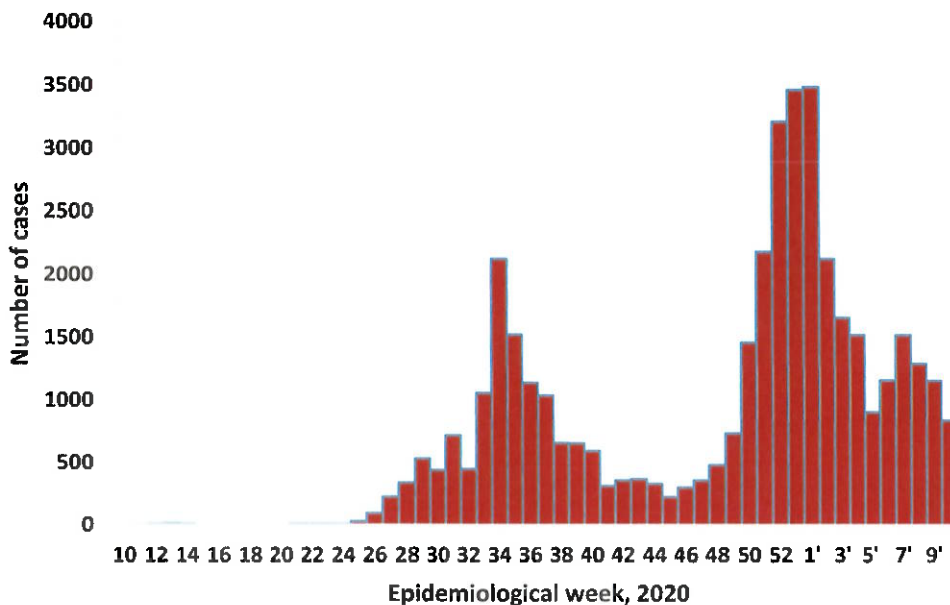


Figure 2: Epi-curve for confirmed COVID-19 cases, 12 March 2021

The National Call Center continues operations for 24 hours daily.

Today (12/03/2021), **547** calls were answered including **13** alerts.

- A highest peak of **3485 (8%)** cases was recorded during week 1 in 2021 (Figure 2).

Table 3: Number of people in mandatory quarantine facilities, 12 March 2021

Region	Newly quarantined 24 Hrs.	Cumulative number	Number discharged	Number in quarantine now
Erongo	0	5193	5138	55
Hardap	8	1488	1457	31
Kavango	0	1205	1178	27
Khomas	0	3363	3206	157
//Kharas	0	4760	4637	123
Kunene	5	3393	3232	161
Ohangwena	0	690	690	0
Omaheke	0	4324	4079	245
Omusati	0	553	551	2
Oshana	0	400	400	0
Oshikoto	0	9768	8927	841
Otjozondjupa	0	1403	1388	15
Zambezi	0	1408	1382	26
Total	13	37948	36265	1683

➤ Since March 2020, **37948** people have been placed into mandatory quarantine facilities around the country.

➤ A total of **1683** people are currently in quarantine, with **13** new admissions.

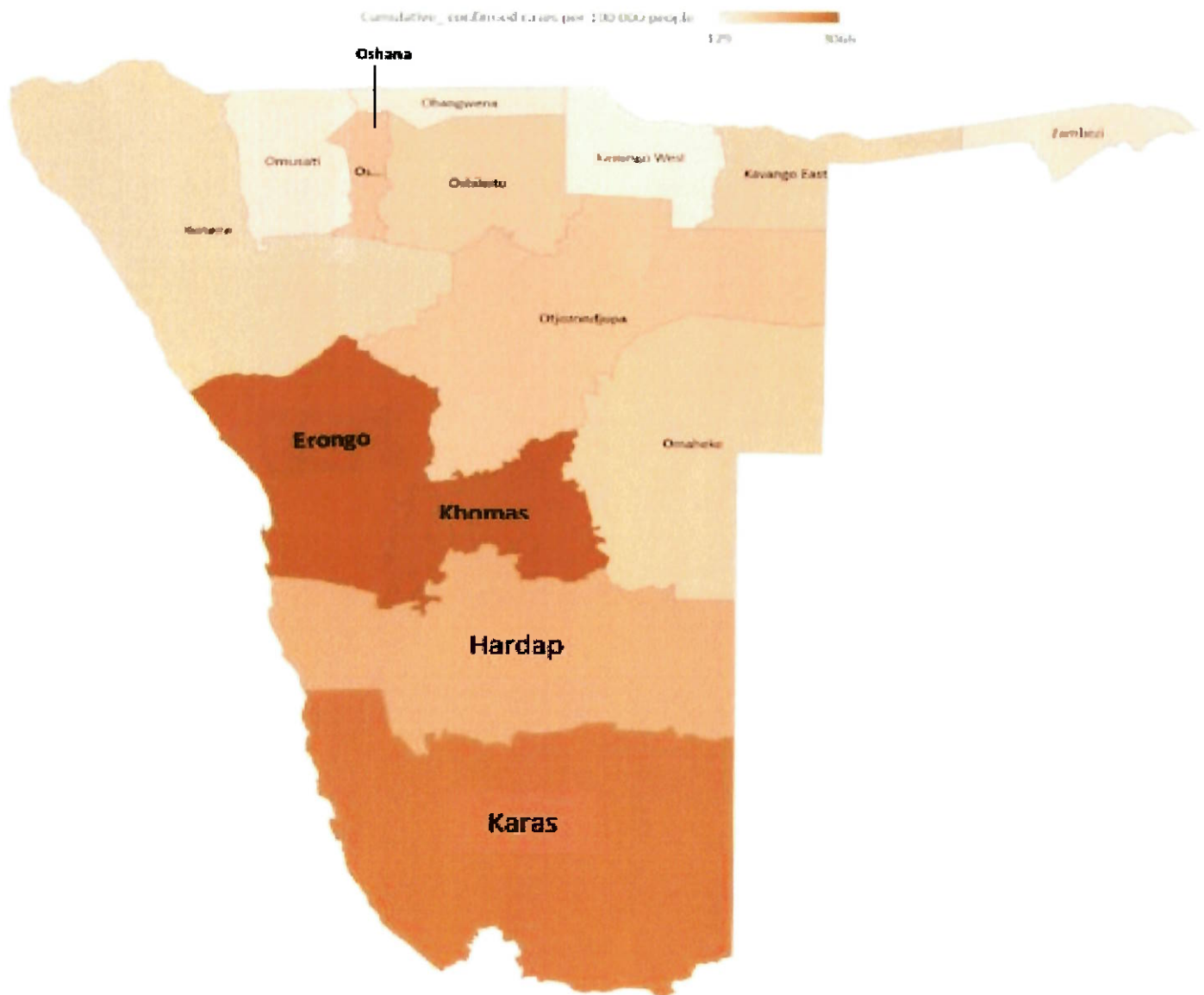


Figure 3: Distribution of cumulative confirmed cases per 100 000 by region, 12 March 2021

PUBLIC HEALTH ACTION(S)

- Mechanisms are underway on how to roll out the vaccine nationwide once it is made available.
- The government and developmental partners continue to prioritise the continuation of essential health services.

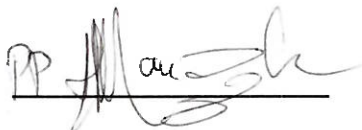
CHALLENGES

- Non-adherence to COVID-19 prevention measures by the general public.

RECOMMENDATIONS

- Continue to give awareness on the importance of adhering to COVID -19 prevention measures; with the involvement of the Security Cluster.

APPROVED



**INCIDENT MANAGER
12 MARCH 2021**



SECRETARIAT

For enquiries, please contact
Namibia Public Health Emergency Operations Centre;

 PHEOC@mhss.gov.na

 0800 100 100

 0851 100 100