



NAMIBIA COVID-19 SITUATION REPORT NO. 364

Outbreak Name	COVID-19 outbreak	Country affected	Namibia
Date & Time	17.03.2021 17h00	Investigation start Date	13 March 2020
Prepared by	Surveillance Team		

HIGHLIGHTS/SITUATION UPDATE (17/03/2021)

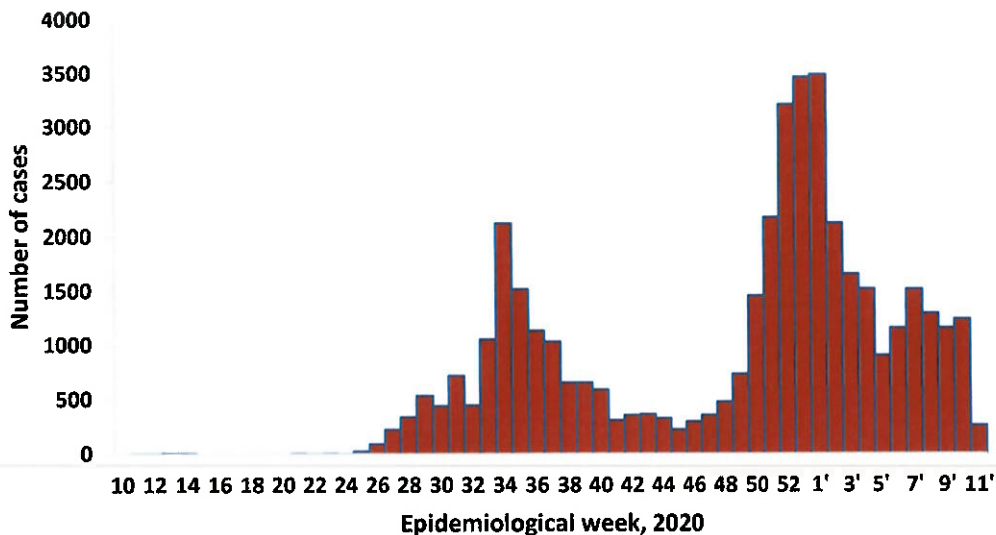
TOTAL	TODAY
Tested 324170	Tested 1810
Confirmed 41684	Confirmed 138
Active 2087	Active 2087
Recovered 39105	Recovered 163
Death 483	Death 6

- A total of **41684** cases have been recorded to-date, representing **2%** of the population.
- More male cases **21068 (51%)** were recorded compared to female cases **20616 (49%)**.
- Of the total confirmed cases, **1871 (4%)** are Health Workers (HWs).
 - 1462 (78%) State; 401 (21%) Private, 4 (0.2%) Non-Governmental Organizations.
 - 1749 (93%) recoveries and 6 (0.3%) deaths.
- The recovery rate now stands at **94%**.
- All fourteen (14) regions have reported confirmed cases; **Khomas and Erongo** regions reported the highest with **15822 (38%)** and **7688 (18%)** respectively.
- Of the total fatalities, **388 (80%)** are COVID-19 deaths while **95 (20%)** are COVID-19 related deaths.

Table 1: Distribution of confirmed COVID-19 cases by region, 17 March 2021

Region	Total No. of cases	Active cases	Recoveries	Cumulative Deaths	Cumulative deaths with co-morbidities	Non-COVID deaths	Health Workers
Erongo	7688	201	7386	96	92	5	204
Hardap	1739	112	1603	24	19	0	45
//Kharas	2627	82	2511	34	29	0	118
Kavango East	1611	276	1314	21	16	0	100
Kavango West	173	5	166	2	2	0	8
Khomas	15822	340	15308	174	159	0	779
Kunene	999	30	958	10	10	0	52
Ohangwena	1025	46	965	13	10	2	50
Omaheke	970	53	906	11	8	0	43
Omusati	1138	104	1027	7	4	0	31
Oshana	2639	257	2352	30	20	0	202
Oshikoto	2297	146	2138	11	11	2	107
Otjozondjupa	2304	112	2151	41	31	0	97
Zambezi	652	323	320	9	6	0	35
Total	41684	2087	39105	483	417	9	1871

EPIDEMIOLOGICAL SITUATION IN NAMIBIA



The National Call Center continues operations for 24 hours daily.

Today (17/03/2021), **472** calls were answered including **17** alerts.

A highest peak of **3485 (8%)** cases was recorded during week 1 in 2021 (Figure 2).

Figure 1: Epi-curve for confirmed COVID-19 cases, 17 March 2021

Of the total confirmed cases, **27094 (65%)** are in the 20-49 years age-brackets which constitutes the majority of the recorded cases.

A total of **6792 (16%)** of the confirmed cases are among the 5-19 years category.

The under 5 years age group make up **952 (2%)** of the total cases whereas, **2633 (6%)** are above 60 years of age.

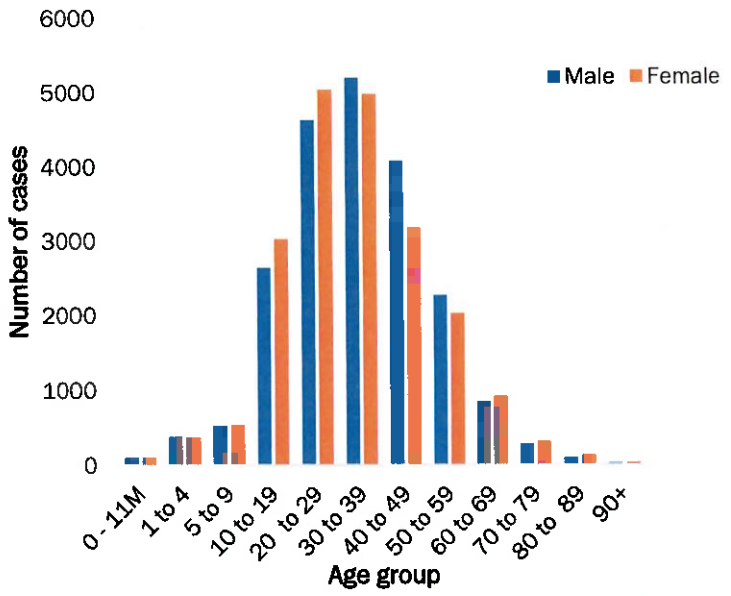


Figure 2: Age and Sex distribution of COVID-19 confirmed cases 17 March 2021

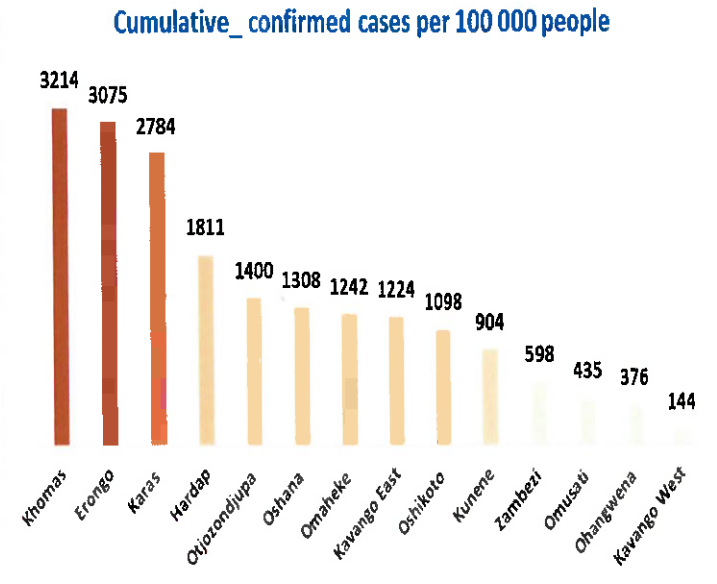
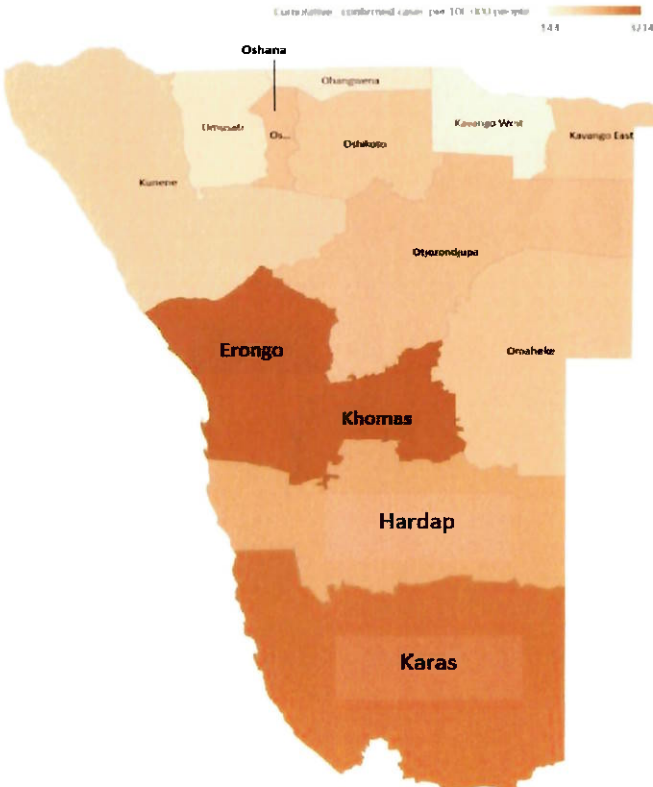


Figure 3: Distribution of cumulative confirmed cases per 100 000 by region, 17 March 2021

Table 2: COVID-19 specimen recorded at the Laboratories, 17 March 2021

VARIABLES	TOTAL
Total samples received by the Laboratory	324287
Total samples tested	312489
Total samples re-tested	11681
Total positive results	41684
Total negative results	270752
Total samples discarded	117
Invalid results	0
Total pending results	46
Indeterminant/inconclusive	7
Suspected cases in 24 hours (excludes re-tests)	1806

To date, **324170** tests (including **11681** re-tests) have been conducted by NIP, Path-Care, NAMDEB, UNAM, Namib Poultry, Diagno, NAMPath and Central Veterinary laboratories.

Since the beginning of the outbreak, **76079** contacts of confirmed cases have been identified, **491** new contacts were identified within the last 24 hours from 11 regions.

Cumulatively, **71299** contacts have completed their monitoring period, while a total of **10419 (25%)** contacts of confirmed cases have tested positive.

Today, **2910 (64%)** out of **4555** active contacts monitored.

Table 3: Number of people in mandatory quarantine facilities, 17 March 2021

Region	Newly quarantined 24 Hrs.	Cumulative number	Number discharged	Number in quarantine now
Erongo	0	5193	5163	30
Hardap	0	1494	1486	8
Kavango	9	1265	1208	57
Khomas	0	3363	3354	9
//Kharas	0	5020	4655	365
Kunene	0	3538	3365	173
Ohangwena	0	690	690	0
Omaheke	0	4512	4323	189
Omusati	0	553	551	2
Oshana	0	400	400	0
Oshikoto	133	10196	9353	843
Otjozondjupa	0	1403	1388	15
Zambezi	23	1431	1392	39
Total	165	39058	37328	1730

Since March 2020, **39058** people have been placed into mandatory quarantine facilities around the country.

A total of **1730** people are currently in quarantine, with **165** new admissions.

PUBLIC HEALTH ACTION(S)

- Mechanisms are underway on how to roll out the vaccine nationwide once it is made available.
- The government and developmental partners continue to prioritise the continuation of essential health services.

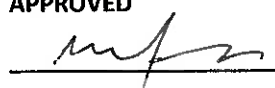
CHALLENGES

- Lack of isolation units and facilities for cases detected in boarding schools.
- Non-adherence to COVID-19 prevention measures by the general public.

RECOMMENDATIONS

- Establish fully equipped isolation units and facilities for cases in schools.
- Continue to give awareness on the importance of adhering to COVID -19 prevention measures; with the involvement of the Security Cluster.




APPROVED



INCIDENT MANAGER
17 MARCH 2021



SECRETARIAT

For enquiries, please contact
Namibia Public Health Emergency Operations Centre;
 PHEOC@mhss.gov.na
 0800 100 100
 0851 100 100