



## NAMIBIA COVID-19 SITUATION REPORT NO. 371

<b>Outbreak Name</b>	COVID-19 outbreak	<b>Country affected</b>	Namibia
<b>Date &amp; Time</b>	24.03.2021 17h00	<b>Investigation start Date</b>	13 March 2020
<b>Prepared by</b>	Surveillance Team		

### HIGHLIGHTS/SITUATION UPDATE (24/03/2021)

- A total of **43010** cases have been recorded to-date, representing **2%** of the population.
- More male cases **21723 (51%)** were recorded compared to female cases **21287 (49%)**.
- Of the total confirmed cases, **1922 (4%)** are Health Workers (HWs).
  - 1510 (79%) State; 405 (21%) Private, 4 (0.2%) Non-Governmental Organizations.
  - 1810 (94%) recoveries and 6 (0.3%) deaths.
- The recovery rate now stands at **95%**.
- All fourteen (14) regions have reported confirmed cases; **Khomas and Erongo** regions reported the highest with **16090 (37%)** and **7856 (18%)** respectively.
- Of the total fatalities, **405 (81%)** are COVID-19 deaths while **97 (19%)** are COVID-19 related deaths.



**Table 1: Distribution of confirmed COVID-19 cases by region, 24 March 2021**

Region	Total No. of cases	Active cases	Recoveries	Cumulative Deaths	Cumulative deaths with co-morbidities	Non-COVID deaths	Health Workers
Erongo	7856	259	7494	98	94	5	208
Hardap	1832	128	1678	26	19	0	53
//Kharas	2697	88	2575	34	29	0	122
Kavango East	1698	265	1412	21	16	0	102
Kavango West	181	8	171	2	2	0	10
Khomas	16090	451	15463	176	160	0	791
Kunene	1142	118	1013	11	11	0	53
Ohangwena	1086	33	1036	15	12	2	53
Omaheke	999	41	945	13	10	0	44
Omusati	1160	16	1136	8	5	0	31
Oshana	2725	24	2669	30	20	1	210
Oshikoto	2392	4	2372	15	15	2	112
Otjozondjupa	2482	162	2277	43	32	0	98
Zambezi	670	17	643	10	7	0	35
<b>Total</b>	<b>43010</b>	<b>1614</b>	<b>40884</b>	<b>502</b>	<b>432</b>	<b>10</b>	<b>1922</b>

# EPIDEMIOLOGICAL SITUATION IN NAMIBIA

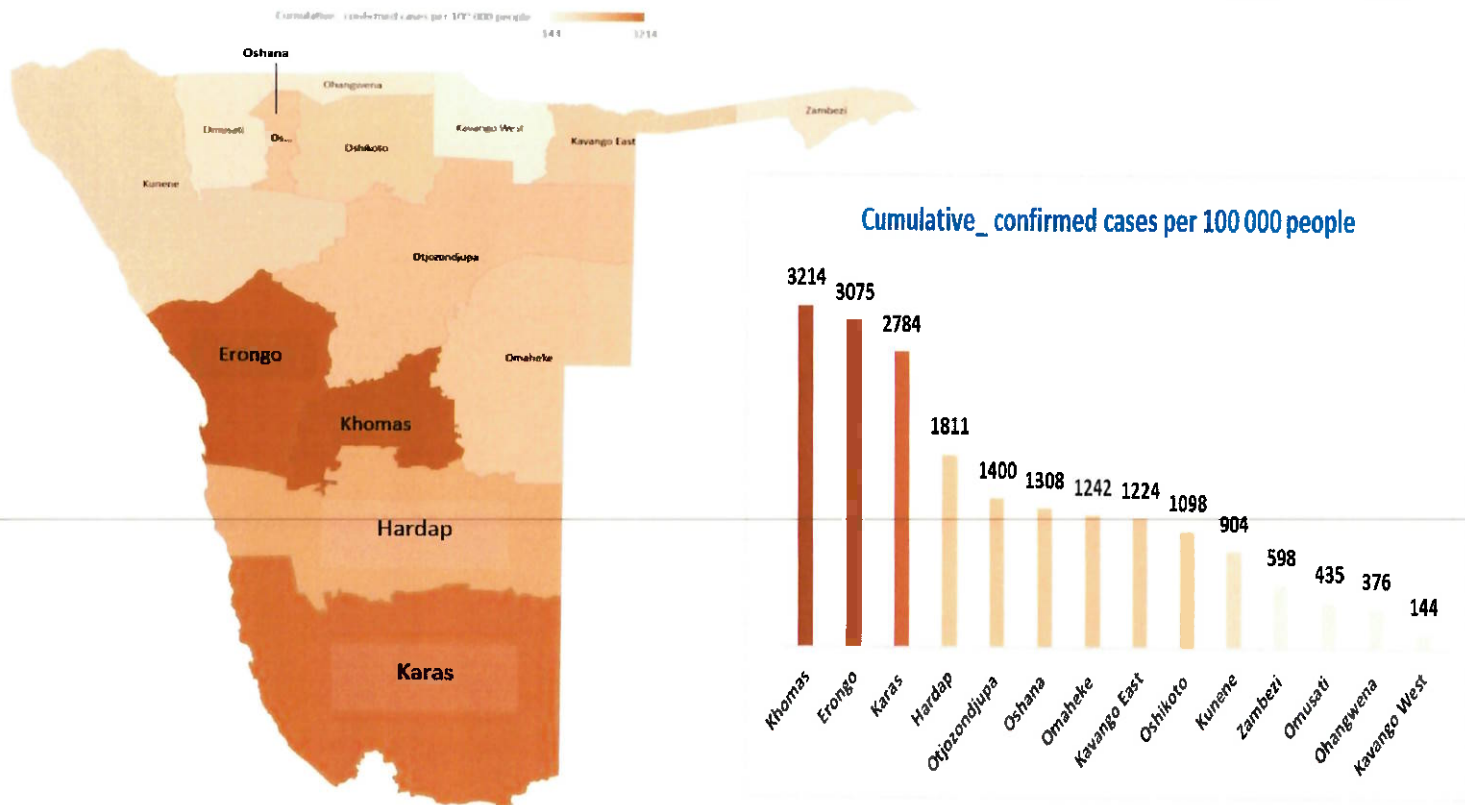


Figure 1: Distribution of cumulative confirmed cases per 100 000 by region, 24 March 2021

Table 2: COVID-19 specimen recorded at the Laboratories, 24 March 2021

VARIABLES	TOTAL
Total samples received by the Laboratory	335005
Total samples tested	323157
Total samples re-tested	11731
Total positive results	43010
Total negative results	280094
Total samples discarded	117
Invalid results	0
Total pending results	46
Indeterminant/Inconclusive	7
Suspected cases in 24 hours (excludes re-tests)	1376

- To date, **334888** tests (including **11731** re-tests) have been conducted by NIP, Path-Care, NAMDEB, UNAM, Namib Poultry, Diagno, NAMPath, Namibia Central Pathology and Central Veterinary laboratories
- Since the beginning of the outbreak, **77847** contacts of confirmed cases have been identified, **293** new contacts were identified within the last 24 hours from 12 regions.
- Cumulatively, **72884** contacts have completed their monitoring period, while a total of **10821 (25%)** contacts of confirmed cases have tested positive.
- Today, **2045 (49%)** out of **4207** active contacts monitored.

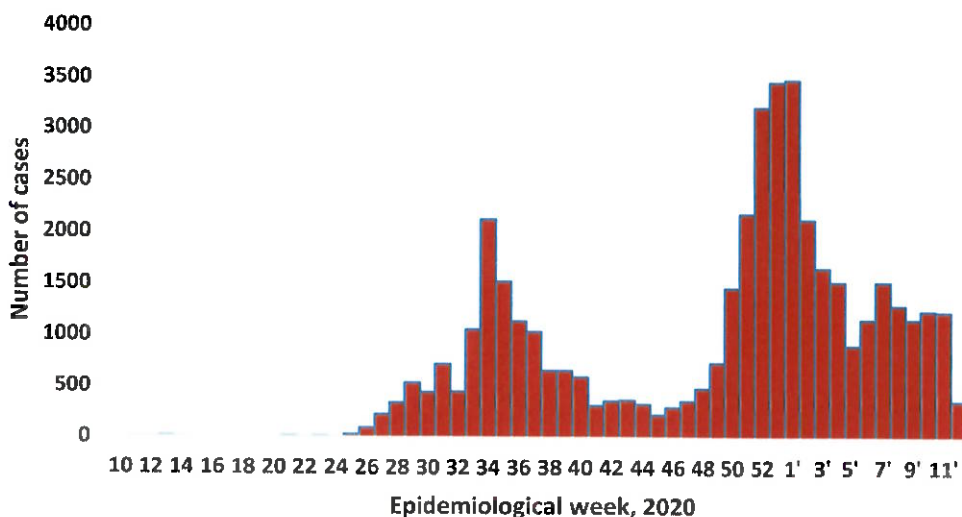
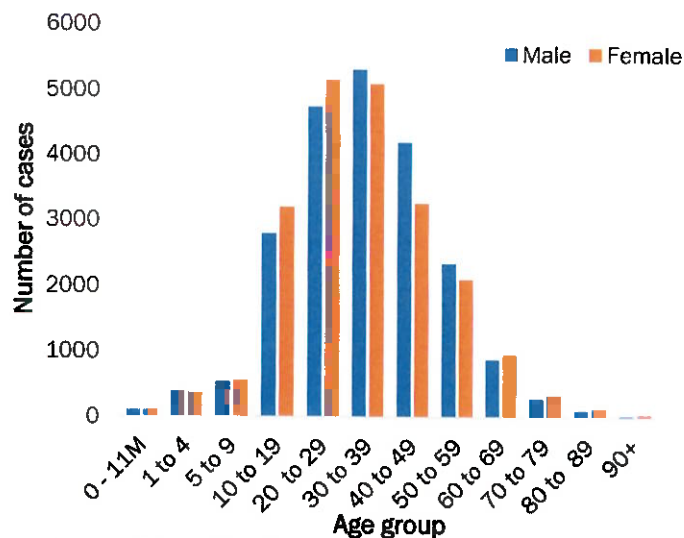


Figure 2: Epi-curve for confirmed COVID-19 cases, 24 March 2021

➤ A highest peak of **3485 (8%)** cases was recorded during week 1 in 2021 (Figure 2).

- The National Call Center continues operations for 24 hours daily.
- Today (24/03/2021), **477** calls were answered including **23** alerts.

- Of the total confirmed cases, **27771 (65%)** are in the 20-49 years age-brackets which constitutes the majority of the recorded cases.
- A total of **7095 (16%)** of the confirmed cases are among the 5-19 years category.
- The under 5 years age group make up **973 (2%)** of the total cases whereas, **2732 (6%)** are above 60 years of age.



**Figure 3: Age and Sex distribution of COVID-19 confirmed cases 24 March 2021**

**Table 3: Number of people in mandatory quarantine facilities, 24 March 2021**

Region	Newly quarantined 24 Hrs.	Cumulative number	Number discharged	Number in quarantine now
Erongo	0	5193	5163	30
Hardap	8	1518	1501	17
Kavango	9	1274	1250	24
Khomas	2	3366	3358	8
//Kharas	63	5261	4848	413
Kunene	58	4017	3624	393
Ohangwena	0	690	690	0
Omaheke	39	4768	4654	114
Omusati	0	553	553	0
Oshana	0	400	400	0
Oshikoto	99	10521	9852	669
Otjozondjupa	0	1403	1403	0
Zambezi	6	1442	1405	37
<b>Total</b>	<b>284</b>	<b>40406</b>	<b>38701</b>	<b>1705</b>

Since March 2020, **40406** people have been placed into mandatory quarantine facilities around the country.

A total of **1705** people are currently in quarantine, with **284** new admissions.

### PUBLIC HEALTH ACTION (S)

- Honourable Minister of Health and Social Services launched a national COVID-19 vaccination programme in Windhoek.
- The government and developmental partners continue to prioritise the continuation of essential health services.

### CHALLENGES

- Lack of isolation units and facilities for cases detected in boarding schools.
- Non-adherence to COVID-19 prevention measures by the general public.

APPROVED

INCIDENT MANAGER  
24 MARCH 2021

### RECOMMENDATIONS

- Establish fully equipped isolation units and facilities for cases in schools.
- Continue to give awareness on the importance of adhering to COVID -19 prevention measures; with the involvement of the Security Cluster.

SECRETARIAT

For enquiries, please contact  
**Namibia Public Health Emergency Operations Centre;**

[PHEOC@mhss.gov.na](mailto:PHEOC@mhss.gov.na)

0800 100 100

0851 100 100