



NAMIBIA COVID-19 SITUATION REPORT NO. 376

Outbreak Name	COVID-19 outbreak	Country affected	Namibia
Date & Time	29.03.2021 17h00	Investigation start Date	13 March 2020
Prepared by	Surveillance Team		

HIGHLIGHTS/SITUATION UPDATE (29/03/2021)

TOTAL	TODAY
Tested 342620	Tested 969
Confirmed 44051	Confirmed 128
Active 1845	Active 1845
Recovered 41676	Recovered 221
Death 520	Death 7

- A total of **44051** cases have been recorded to-date, representing **2%** of the population.
- More male cases **22193 (50%)** were recorded compared to female cases **21858 (50%)**.
- Of the total confirmed cases, **1953 (4%)** are Health Workers (HWs).
 - 1535 (79%) State; 414 (21%) Private, 4 (0.2%) Non-Governmental Organizations.
 - 1810 (93%) recoveries and 6 (0.3%) deaths.
- The recovery rate now stands at **94%**.
- All fourteen (14) regions have reported confirmed cases; *Khomas and Erongo regions reported the highest with **16265 (37%)** and **7954 (18%)** respectively.*
- Of the total fatalities, **421 (81%)** are COVID-19 deaths while **99 (19%)** are COVID-19 related deaths.

Table 1: Distribution of confirmed COVID-19 cases by region, 29 March 2021

Region	Total No. of cases	Active cases	Recoveries	Cumulative Deaths	Cumulative deaths with co-morbidities	Non-COVID deaths	Health Workers
Erongo	7954	229	7618	102	97	5	212
Hardap	2011	205	1777	29	22	0	55
//Kharas	2741	87	2619	35	29	0	122
Kavango East	1753	64	1666	23	18	0	109
Kavango West	187	6	179	2	2	0	11
Khomas	16265	506	15580	179	163	0	797
Kunene	1261	190	1059	12	12	0	53
Ohangwena	1112	51	1043	16	13	2	54
Omaheke	1009	50	945	14	11	0	44
Omusati	1180	22	1150	8	5	0	31
Oshana	2782	81	2669	31	20	1	214
Oshikoto	2469	80	2372	15	16	2	117
Otjozondjupa	2640	259	2337	44	33	0	98
Zambezi	687	15	662	10	7	0	36
Total	44051	1845	41676	520	448	10	1953

EPIDEMIOLOGICAL SITUATION IN NAMIBIA

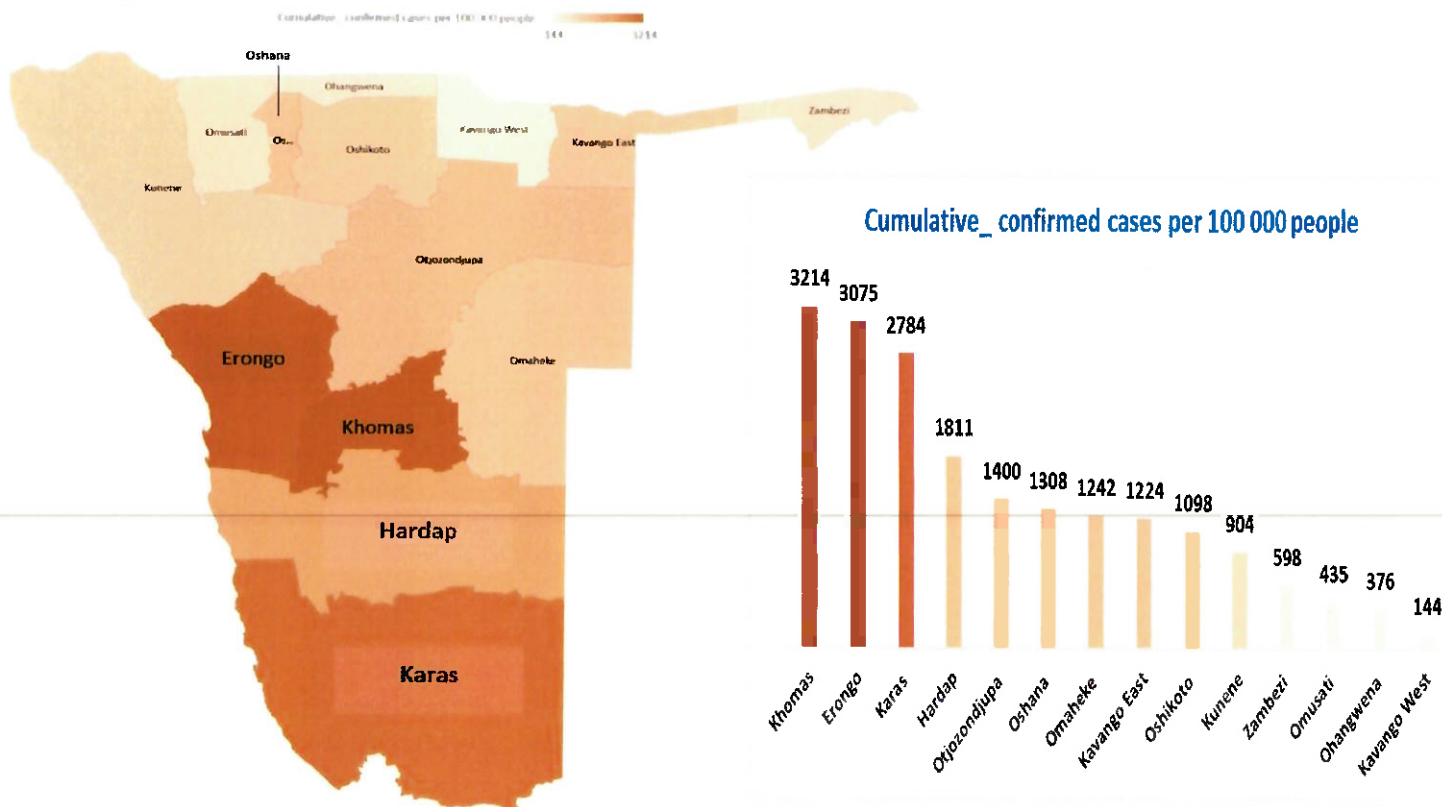


Figure 1: Distribution of cumulative confirmed cases per 100 000 by region, 29 March 2021

Table 2: COVID-19 specimen recorded at the Laboratories, 29 March 2021

VARIABLES	TOTAL
Total samples received by the Laboratory	342737
Total samples tested	330862
Total samples re-tested	11758
Total positive results	44051
Total negative results	286758
Total samples discarded	117
Invalid results	0
Total pending results	46
Indeterminant/Inconclusive	7
Suspected cases in 24 hours (excludes re-tests)	969

- To date, **342620** tests (including **11758** re-tests) have been conducted by NIP, Path-Care, NAMDEB, UNAM, Namib Poultry, Diagno, NAMPath, Namibia Central Pathology and Central Veterinary laboratories
- Since the beginning of the outbreak, **79999** contacts of confirmed cases have been identified, **964** new contacts were identified within the last 24 hours from 14 regions.
- Cumulatively, **74907** contacts have completed their monitoring period, while a total of **11208 (25%)** contacts of confirmed cases have tested positive.
- Today, **2977 (67%)** out of **4466** active contacts monitored.

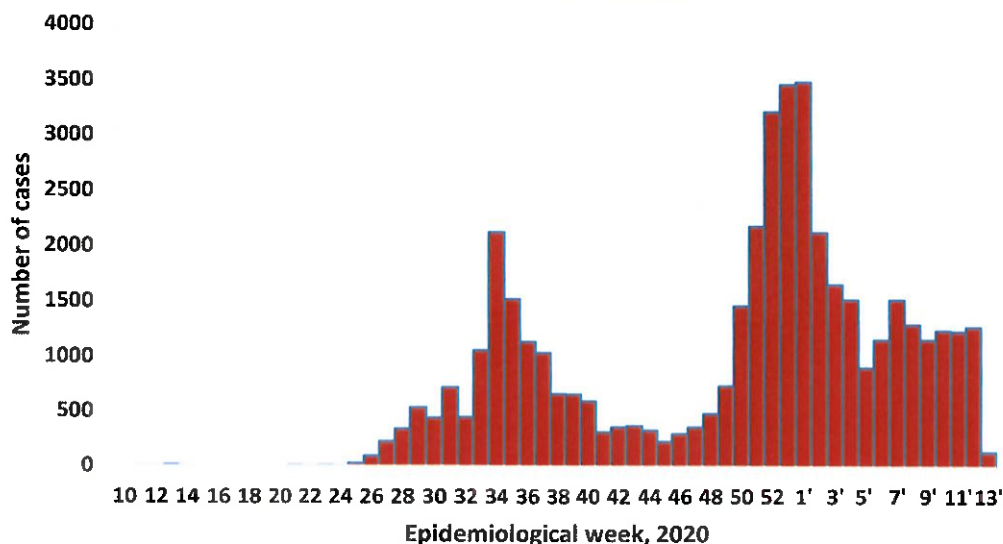


Figure 2: Epi-curve for confirmed COVID-19 cases, 29 March 2021

➤ A highest peak of **3485 (8%)** cases was recorded during week 1 in 2021

- The National Call Center continues operations for 24 hours daily.
- Today (29/03/2021), **530** calls were answered including **14** alerts.

- Of the total confirmed cases, **28253 (64%)** are in the 20-49 years age-brackets which constitutes the majority of the recorded cases.
- A total of **7410 (17%)** of the confirmed cases are among the 5-19 years category.
- The under 5 years age group make up **1006 (2%)** of the total cases whereas, **2811 (6%)** are above 60 years of age.

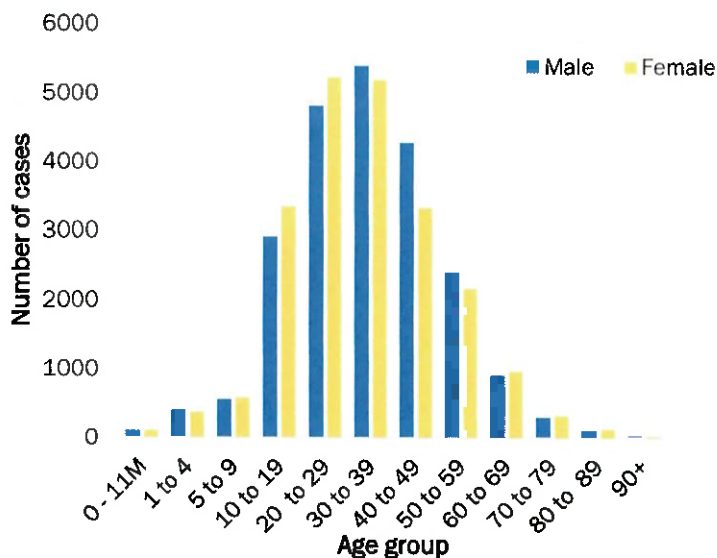


Figure 3: Age and Sex distribution of COVID-19 confirmed cases 29 March 2021

Table 3: Number of people in mandatory quarantine facilities, 29 March 2021

Region	Newly quarantined 24 Hrs.	Cumulative number	Number discharged	Number in quarantine now
Erongo	0	5224	5170	54
Hardap	5	1531	1519	12
Kavango	0	1278	1272	6
Khomas	0	3369	3358	11
//Kharas	1	5310	4910	400
Kunene	3	4281	3853	428
Ohangwena	2	692	690	2
Omaheke	0	4829	4788	41
Omusati	0	558	553	5
Oshana	0	400	400	0
Oshikoto	50	10674	10035	639
Otjozondjupa	0	1453	1430	23
Zambezi	0	1474	1429	45
Total	61	41073	39407	1666

- Since March 2020, **41073** people have been placed into mandatory quarantine facilities around the country.
- A total of **1666** people are currently in quarantine, with **61** new admissions.

PUBLIC HEALTH ACTION (S)

- Honourable Minister of Health and Social Services launched a national COVID-19 vaccination programme in Windhoek.
- The government and developmental partners continue to prioritise the continuation of essential health services.

CHALLENGES

- Lack of isolation units and facilities for cases detected in boarding schools.
- Non-adherence to COVID-19 prevention measures by the general public.

RECOMMENDATIONS

- Establish fully equipped isolation units and facilities for cases in schools.
- Continue to give awareness on the importance of adhering to COVID -19 prevention measures; with the involvement of

APPROVED

INCIDENT MANAGER
29 MARCH

SECRETARIAT

For enquiries, please contact
Namibia Public Health Emergency Operations Centre;
PHEOC@mhss.gov.na
 0800 100 100
 0851 100 100