



NAMIBIA COVID-19 SITUATION REPORT NO. 386

Outbreak Name	COVID-19 outbreak	Country affected	Namibia
Date & Time	08.04.2021 17h00	Investigation start Date	13 March 2020
Prepared by	Surveillance Team		

HIGHLIGHTS/SITUATION UPDATE (08/04/2021)

CUMULATIVE

Tested 354815

Confirmed 45193

Active 1140

Recoveries 43483

Deaths 559

TOTAL TODAY

Tested 1841

Confirmed 139

Active 1140

Recoveries 129

Deaths 2

- A total of **45193** cases have been recorded to-date, representing **2%** of the population.
- Cases are equally distributed by gender at **50%**.
- Of the total confirmed cases, **1979 (4%)** are Health Workers.
 - 1556 (78%) State; 419 (21%) Private, 4 (0.2%) Non-Governmental Organizations.
 - 1941 (98%) recoveries and 6 (0.3%) deaths.
- The recovery rate now stands at **96%**.
- All fourteen (14) regions have reported confirmed cases; *Khomas and Erongo* regions reported the highest with **16494 (36%)** and **8107 (18%)** respectively.
- Of the total fatalities, **455 (81%)** are COVID-19 deaths while **104 (19%)** are COVID-19 related deaths.

Table 1: Distribution of confirmed COVID-19 cases by region, 08 April 2021

Region	Total No. of cases	Active cases	Recoveries	Cumulative Deaths	Cumulative deaths with co-morbidities	Non-COVID deaths	Vaccine data	Health Workers
<i>Erongo</i>	8107	218	7777	107	102	5	666	219
<i>Hardap</i>	2219	214	1971	34	24	0	0	59
<i>//Kharas</i>	2816	48	2730	38	30	0	0	122
<i>Kavango East</i>	1819	80	1716	23	18	0	0	110
<i>Kavango West</i>	203	16	185	2	2	0	0	12
<i>Khomas</i>	16494	312	15982	199	178	1	1932	807
<i>Kunene</i>	1297	7	1276	14	14	0	0	53
<i>Oshana</i>	1134	46	1070	16	13	2	0	54
<i>Omaheke</i>	1012	2	996	14	11	0	0	44
<i>Omusati</i>	1204	9	1187	8	5	0	0	33
<i>Oshana</i>	2827	43	2751	32	20	1	0	214
<i>Oshikoto</i>	2536	56	2463	15	16	2	0	117
<i>Otjozondjupa</i>	2818	71	2700	47	36	0	0	99
<i>Zambezi</i>	707	18	679	10	7	0	0	36
Total	45193	1140	43483	559	476	11	2598	1979

EPIDEMIOLOGICAL SITUATION IN NAMIBIA

➤ A highest peak of **3485 (8%)** cases was recorded during week 1 in 2021 (Figure 1).

➤ The National Call Center continues operations for 24 hours daily.

➤ Today (08/04/2021), **515** calls were answered including **28** alerts.

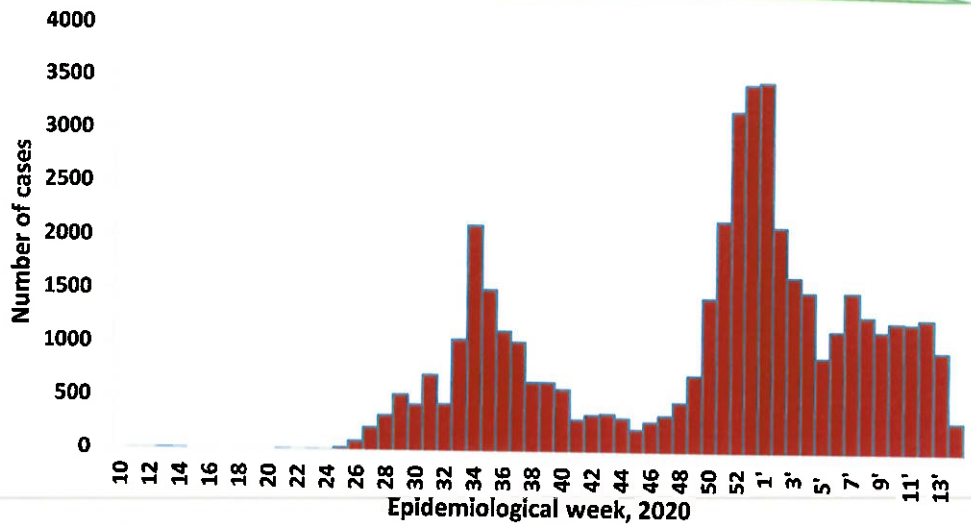


Figure 1: Epi-curve for confirmed COVID-19 cases, 08 April 2021

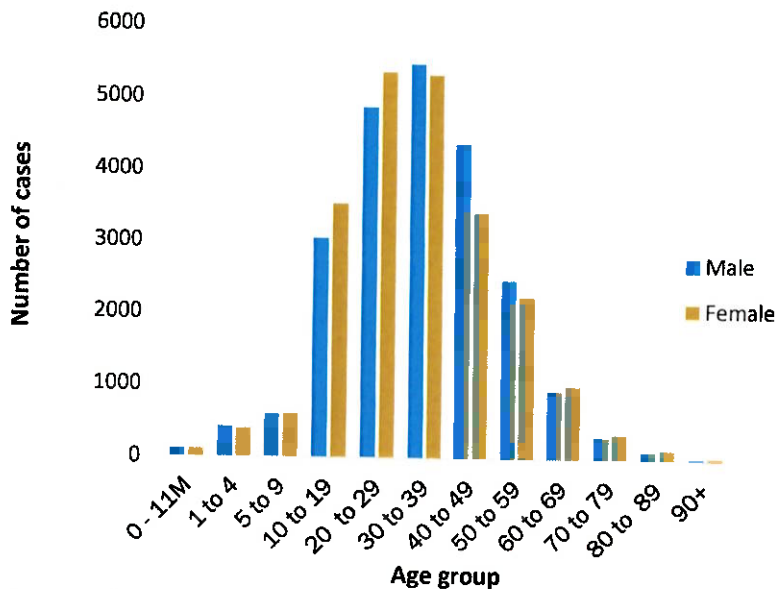


Figure 2: Age and Sex distribution of COVID-19 confirmed cases, 08 April 2021

➤ Of the total confirmed cases, **28779 (64%)** are in the 20-49 years age-brackets which constitutes the majority of the recorded cases.

➤ A total of **7764 (17%)** of the confirmed cases are among the 5-19 years category.

➤ The under 5 years age group make up **1030 (2%)** of the total cases whereas, **2889 (6%)** are above 60 years of age.

Cumulative_confirmed cases per 100 000 people

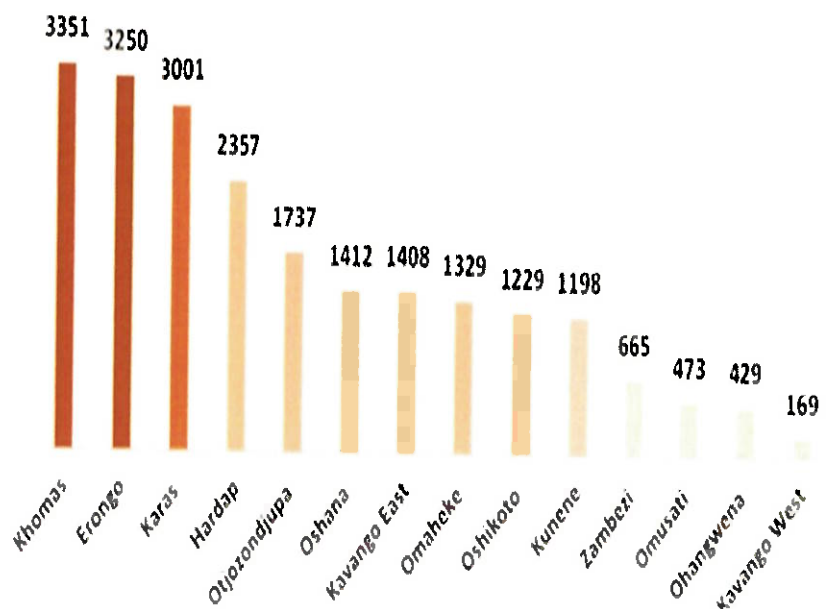
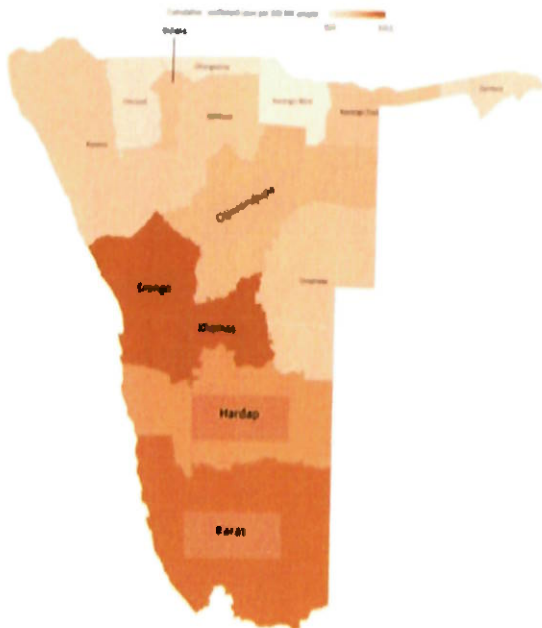


Figure 3: Distribution of cumulative confirmed cases per 100 000 by region, 08 April 2021

Table 2: COVID-19 specimen recorded at the Laboratories, 08 April 2021

- To date, **354815** tests (including **11813** re-tests) have been conducted by NIP, Path-Care, NAMDEB, UNAM, Namib Poultry, Diagno, NAMPath, Namibia Central Pathology and Central Veterinary laboratories
- Since the beginning of the outbreak, **83162** contacts of confirmed cases have been identified, **202** new contacts were identified within the last 24 hours from 12 regions.
- Cumulatively, **78165** contacts have completed their monitoring period, while a total of **11622 (26%)** contacts of confirmed cases have tested positive.
- Today, **1633 (39%)** out of **4167** active contacts monitored.

VARIABLES	TOTAL
Total samples received by the Laboratory	354932
Total samples tested	343002
Total samples re-tested	11813
Total positive results	45193
Total negative results	297756
Total samples discarded	117
Invalid results	0
Total pending results	46
Indeterminant/Inconclusive	7
Suspected cases in 24 hours (excludes re-tests)	1823

Table 3: Number of people in mandatory quarantine facilities, 08 April 2021

Region	Newly quarantined 24 Hrs.	Cumulative number	Number discharged	Number in quarantine now
Erongo	0	5264	5224	40
Hardap	15	1570	1547	23
Kavango	0	1313	1290	23
Khomas	0	3402	3386	16
//Kharas	27	5573	5290	283
Kunene	78	4420	4294	126
Ohangwena	0	692	692	0
Omaheke	0	4962	4915	47
Omusati	5	563	553	10
Oshana	0	400	400	0
Oshikoto	39	11214	10579	635
Otjozondjupa	0	1453	1430	23
Zambezi	0	1649	1491	158
Total	164	42475	41091	1384

- Since March 2020, **42475** people have been placed into mandatory quarantine facilities around the country.
- A total of **1384** people are currently in quarantine, with **164** new admissions.

PUBLIC HEALTH ACTION (S)

- The government and developmental partners continue to prioritise the continuation of essential health services.

CHALLENGES

- Lack of isolation units and facilities for cases detected in boarding schools and police holding cells.
- Non-adherence to COVID-19 prevention measures by the general public.

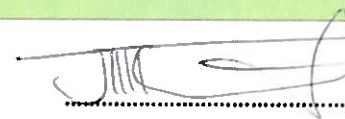
RECOMMENDATIONS

- Establish fully equipped isolation units and facilities for cases detected in schools and police holding cells.
- Continue to give awareness on the importance of adhering to COVID -19 prevention measures; with the involvement of the Security Cluster.

APPROVED



INCIDENT MANAGER
08 APRIL 2021



SECRETARIAT

For enquiries, please contact
Namibia Public Health Emergency Operations Centre;

 PHEOC@mhss.gov.na

 0800 100 100

 0851 100 100