



NAMIBIA COVID-19 SITUATION REPORT NO. 387

Outbreak Name	COVID-19 outbreak	Country affected	Namibia
Date & Time	09.04.2021 17h00	Investigation start Date	13 March 2020
Prepared by	Surveillance Team		

HIGHLIGHTS/SITUATION UPDATE (09/04/2021)

CUMULATIVE

Tested 356408

Confirmed 45323

Active 1193

Recoveries 43555

Deaths 564

TOTAL TODAY

Tested 1593

Confirmed 130

Active 1193

Recoveries 72

Deaths 5

- A total of **45323** cases have been recorded to-date, representing **2%** of the population.
- Cases are equally distributed by gender at **50%**.
- Of the total confirmed cases, **1982 (4%)** are Health Workers.
 - 1559 (79%) State; 419 (21%) Private, 4 (0.2%) Non-Governmental Organizations.
 - 1941 (98%) recoveries and 6 (0.3%) deaths.
- The recovery rate now stands at **96%**.
- All fourteen (14) regions have reported confirmed cases; *Khomas* and *Erongo* regions reported the highest with **16504 (36%)** and **8145 (18%)** respectively.
- Of the total fatalities, **460 (82%)** are COVID-19 deaths while **104 (18%)** are COVID-19 related deaths.

Table 1: Distribution of confirmed COVID-19 cases by region, 09 April 2021

Region	Total No. of cases	Active cases	Recoveries	Cumulative Deaths	Cumulative deaths with co-morbidities	Non-COVID deaths	Vaccine data	Health Workers
Erongo	8145	255	7777	108	103	5	719	219
Hardap	2234	194	2006	34	24	0	0	59
//Kharas	2828	59	2731	38	30	0	0	123
Kavango East	1819	80	1716	23	18	0	0	110
Kavango West	204	17	185	2	2	0	0	12
Khomas	16504	294	16009	200	179	1	2156	807
Kunene	1300	10	1276	14	14	0	0	53
Ohangwena	1134	46	1070	16	13	2	0	54
Omaheke	1014	4	996	14	11	0	0	44
Omusati	1205	9	1187	9	6	0	0	33
Oshana	2835	40	2760	34	22	1	0	214
Oshikoto	2556	76	2463	15	16	2	0	117
Otjozondjupa	2837	90	2700	47	36	0	0	101
Zambezi	708	19	679	10	7	0	0	36
Total	45323	1193	43555	564	481	11	2875	1982

EPIDEMIOLOGICAL SITUATION IN NAMIBIA

➤ A highest peak of **3485 (8%)** cases was recorded during week 1 in 2021 (Figure 1).

➤ The National Call Center continues operations for 24 hours daily.
 ➤ Today (09/04/2021), **515** calls were answered including **28** alerts.

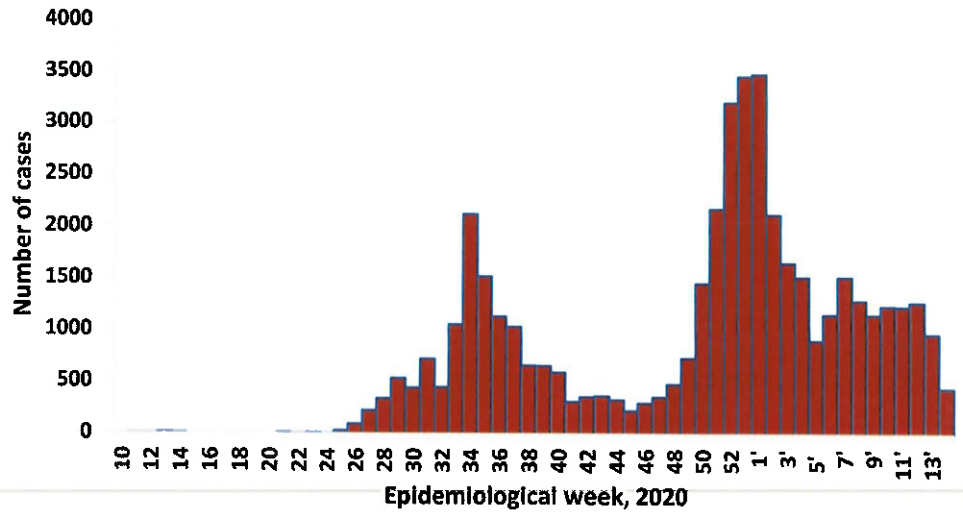


Figure 1: Epi-curve for confirmed COVID-19 cases, 09 April 2021

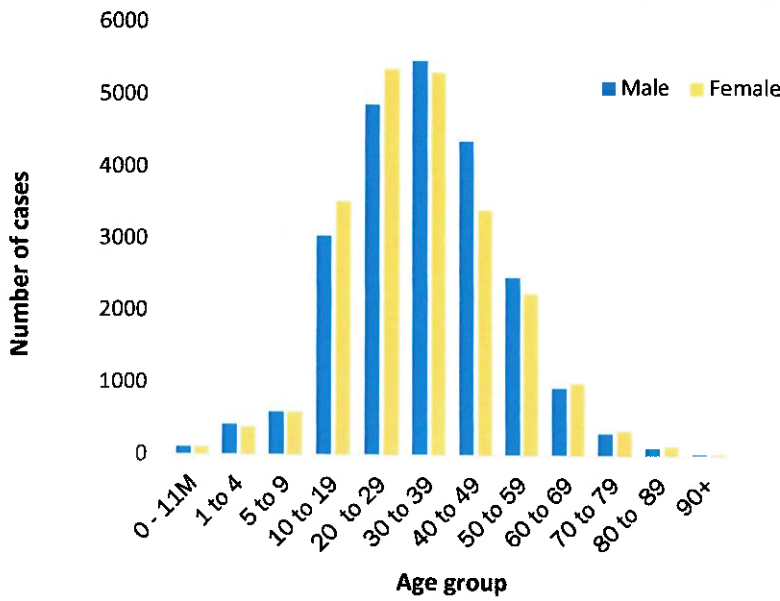


Figure 2: Age and Sex distribution of COVID-19 confirmed cases 09 April 2021

➤ Of the total confirmed cases, **28868 (64%)** are in the 20-49 years age-brackets which constitutes the majority of the recorded cases.
 ➤ A total of **7798 (17%)** of the confirmed cases are among the 5-19 years category.
 ➤ The under 5 years age group make up **1037 (2%)** of the total cases whereas, **2893 (6%)** are above 60 years of age.

Cumulative_confirmed cases per 100 000 people

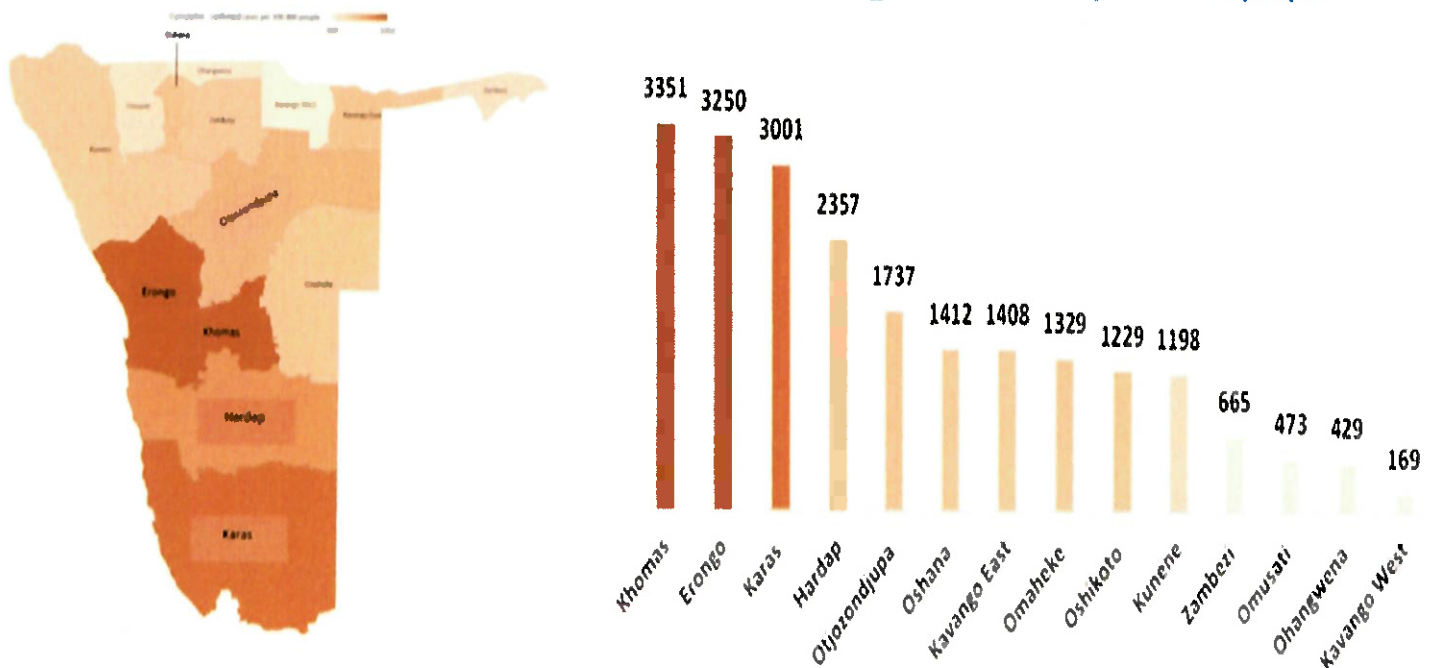


Figure 3: Distribution of cumulative confirmed cases per 100 000 by region, 09 April 2021

Table 2: COVID-19 specimen recorded at the Laboratories, 09 April 2021

- To date, **356408** tests (including **11815** re-tests) have been conducted by NIP, Path-Care, NAMDEB, UNAM, Namib Poultry, Diagno, NAMPath, Namibia Central Pathology and Central Veterinary laboratories
- Since the beginning of the outbreak, **83504** contacts of confirmed cases have been identified, **342** new contacts were identified within the last 24 hours from 10 regions.
- Cumulatively, **78628** contacts have completed their monitoring period, while a total of **11636 (26%)** contacts of confirmed cases have tested positive.
- Today, **1667 (41%)** out of **4036** active contacts monitored.

VARIABLES	TOTAL
Total samples received by the Laboratory	356525
Total samples tested	344593
Total samples re-tested	11815
Total positive results	45323
Total negative results	299217
Total samples discarded	117
Invalid results	0
Total pending results	46
Indeterminant/Inconclusive	7
Suspected cases in 24 hours (excludes re-tests)	1591

Table 3: Number of people in mandatory quarantine facilities, 09 April 2021

Region	Newly quarantined 24 Hrs.	Cumulative number	Number discharged	Number in quarantine now
Erongo	0	5264	5224	40
Hardap	1	1571	1547	24
Kavango	0	1313	1290	23
Khomas	0	3402	3386	16
//Kharas	0	5573	5290	283
Kunene	32	4452	4332	120
Ohangwena	0	692	692	0
Omaheke	40	5002	4915	87
Omusati	0	563	553	10
Oshana	0	400	400	0
Oshikoto	21	11235	10592	643
Otjozondjupa	0	1453	1430	23
Zambezi	0	1649	1491	158
Total	94	42569	41142	1427

- Since March 2020, **42569** people have been placed into mandatory quarantine facilities around the country.
- A total of **1427** people are currently in quarantine, with **94** new admissions.

PUBLIC HEALTH ACTION (S)

- The government and developmental partners continue to prioritise the continuation of essential health services.

CHALLENGES

- Lack of isolation units and facilities for cases detected in boarding schools and police holding cells.
- Non-adherence to COVID-19 prevention measures by the general public.

RECOMMENDATIONS

- Establish fully equipped isolation units and facilities for cases detected in schools and police holding cells.
- Continue to give awareness on the importance of adhering to COVID -19 prevention measures; with the involvement of the Security Cluster.

APPROVED



INCIDENT MANAGER
09 APRIL 2021



SECRETARIAT

For enquiries, please contact
Namibia Public Health Emergency Operations Centre;
 PHEOC@mhss.gov.na
 0800 100 100
 0851 100 100