



## NAMIBIA COVID-19 SITUATION REPORT NO. 398

<b>Outbreak Name</b>	COVID-19 outbreak	<b>Country affected</b>	Namibia
<b>Date &amp; Time</b>	20.04.2021 17h00	<b>Investigation start Date</b>	13 March 2020
<b>Prepared by</b>	Surveillance Team		

### HIGHLIGHTS/SITUATION UPDATE (20/04/2021)

#### CUMULATIVE

**Tested 371456**

**Confirmed 46954**

**Active 1295**

**Recoveries 45039**

**Deaths 609**

#### TOTAL TODAY

**Tested 1273**

**Confirmed 79**

**Active 1295**

**Recoveries 86**

**Deaths 1**

- A total of **46954** cases have been recorded to-date, representing **2%** of the population.
- Cases are equally distributed by gender at **50%**.
- Of the total confirmed cases, **2021 (4%)** are Health Workers.
  - 1591 (79%) State; 426 (21%) Private, 4 (0.2%) Non-Governmental Organizations.
  - 2005 (99%) recoveries and 6 (0.3%) deaths.
- The recovery rate now stands at **96%**.
- All fourteen (14) regions have reported confirmed cases; *Khomas* and *Erongo* regions reported the highest with **16845 (36%)** and **8398 (18%)** respectively.
- Of the total fatalities, **495 (81%)** are COVID-19 deaths while **114 (19%)** are COVID-19 related deaths.

**Table 1: Distribution of confirmed COVID-19 cases by region, 20 April 2021**

Region	Total No. of cases	Active cases	Recoveries	Cumulative Deaths	Cumulative deaths with co-morbidities	Non-COVID deaths	Vaccine data	Health Workers
Erongo	8398	220	8058	115	108	5	1377	221
Hardap	2564	150	2377	37	25	0	0	63
//Kharas	2906	51	2815	40	32	0	146	126
Kavango East	1874	42	1809	23	18	0	0	114
Kavango West	227	1	224	2	2	0	0	12
Khomas	16845	438	16186	220	196	1	4333	818
Kunene	1365	58	1293	14	14	0	20	53
Oshana	1190	13	1159	16	13	2	27	57
Omaheke	1029	3	1012	14	11	0	0	44
Omusati	1241	27	1205	9	6	0	49	34
Oshana	2880	42	2803	34	22	1	109	216
Oshikoto	2625	72	2533	18	18	2	0	118
Otjozondjupa	3088	174	2858	56	44	0	0	109
Zambezi	722	4	707	11	8	0	37	36
<b>Total</b>	<b>46954</b>	<b>1295</b>	<b>45039</b>	<b>609</b>	<b>517</b>	<b>11</b>	<b>6098</b>	<b>2021</b>



## EPIDEMIOLOGICAL SITUATION IN NAMIBIA

**Table 2: Number of people in mandatory quarantine facilities, 20 April 2021**

Region	Newly quarantined 24 Hrs.	Cumulative number	Number discharged	Number in quarantine now
Erongo	0	5348	5307	41
Hardap	0	1632	1611	21
Kavango	0	1322	1320	2
Khomas	6	3421	3402	19
//Kharas	0	5722	5547	175
Kunene	0	4629	4468	161
Ohangwena	0	692	692	0
Omaheke	135	5432	5228	204
Omusati	0	565	565	0
Oshana	0	400	400	0
Oshikoto	31	11617	11034	583
Otjozondjupa	0	1476	1453	23
Zambezi	1	1703	1576	127
<b>Total</b>	<b>173</b>	<b>43959</b>	<b>42603</b>	<b>1356</b>

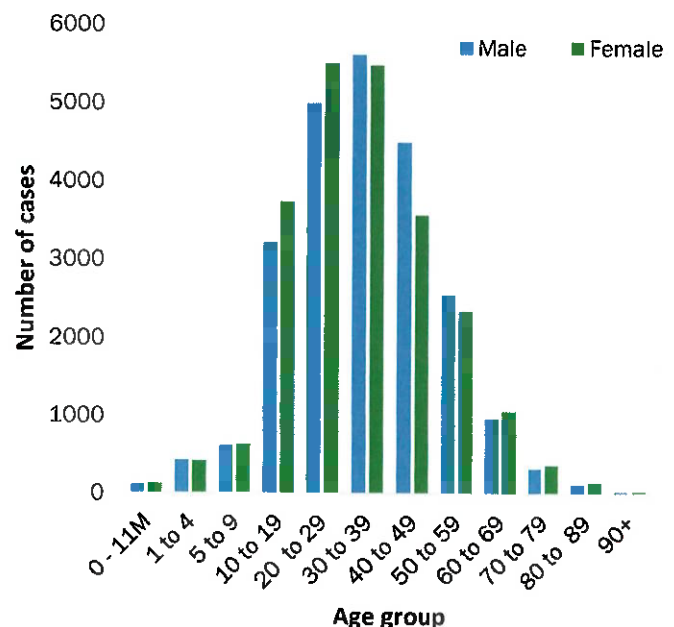
➤ Since March 2020, **43959** people have been placed into mandatory quarantine facilities around the country.

➤ A total of **1356** people are currently in quarantine, with **173** new admissions.

➤ Of the total confirmed cases, **29723 (63%)** are in the 20-49 years age-brackets which constitutes the majority of the recorded cases.

➤ A total of **8210 (17%)** of the confirmed cases are among the 5-19 years category.

➤ The under 5 years age group make up **1073 (2%)** of the total cases whereas, **3043 (6%)** are above 60 years of age.



**Figure 1: Age and Sex distribution of COVID-19 confirmed cases 20 April 2021**

**Table 3: COVID-19 specimen recorded at the Laboratories 20 April 2021**

VARIABLES	TOTAL
Total samples received by the Laboratory	371573
Total samples tested	359576
Total samples re-tested	11880
Total positive results	46954
Total negative results	312569
Total samples discarded	117
Invalid results	0
Total pending results	46
Indeterminant/Inconclusive	7
Suspected cases in 24 hours (excluding re-tests)	1269

➤ To date, **371456** tests (including **11880** re-tests) have been conducted by NIP, Path-Care, NAMDEB, UNAM, Namib Poultry, Diagno, NAMPath, Namibia Central Pathology and Central Veterinary laboratories

➤ Since the beginning of the outbreak, **86015** contacts of confirmed cases have been identified, **293** new contacts were identified within the last 24 hours from 13 regions.

➤ Cumulatively, **81704** contacts have completed their monitoring period, while a total of **11751 (25%)** contacts of confirmed cases have tested positive.

➤ Today, **2455 (70%)** out of **3493** active contacts monitored.

➤ The highest peaks of **3463 (7%)** and **3485 (7%)** cases were recorded during week 53 of 2020 and 1 of 2021 respectively (Figure 2).

➤ The National Call Center continues operations for 24 hours daily.

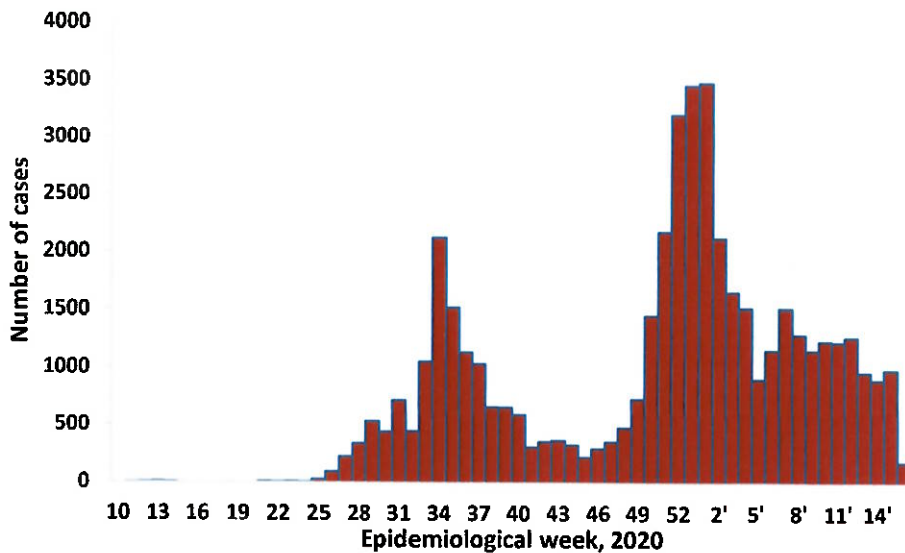
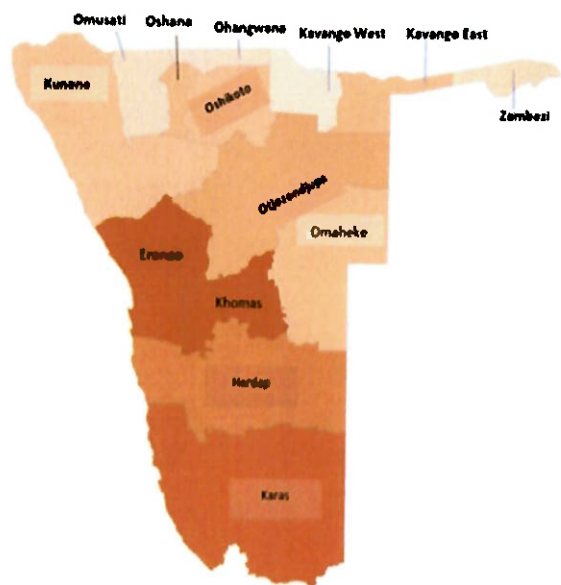


Figure 2: Epi-curve for confirmed COVID-19 cases, 20 April 2021



Cumulative confirmed cases per 100 000 people

**PUBLIC HEALTH ACTION (S)**

- The COVID-19 vaccination programme has been extended to other regions and is ongoing.
- The government and developmental partners continue to prioritize the continuation of essential health services.

**CHALLENGES**

- Lack of isolation units and facilities for cases detected in boarding schools and police holding cells.
- Non-adherence to COVID-19 prevention measures by the general public.

**RECOMMENDATIONS**

- Establish fully equipped isolation units and facilities for cases detected in schools and police holding cells.
- Continue to give awareness on the importance of adhering to COVID -19 prevention measures; with the involvement of the Security Cluster.

APPROVED

*[Signature]*  
 INCIDENT MANAGER  
 20 APRIL 2021

*[Signature]*

SECRETARIAT

For enquiries, please contact  
**Namibia Public Health Emergency Operations Centre;**  
 @ [PHEOC@mhss.gov.na](mailto:PHEOC@mhss.gov.na)  
 ☎ 0800 100 100  
 📞 0851 100 100