

South Sudan

Integrated Disease surveillance and response (IDSR)

Epidemiological Bulletin Week 10, 2021 (March 08- March 14)





- In week 10, 2021 IDSR reporting timeliness was 83% and completeness was 85% at health facility level. EWARN reporting both timeliness and completeness were 93%
- Of the 104 alerts in week 10, 2021; 65% were verified 0% were risk assessed and 1% required a response. Malaria (43), AWD (24), ARI (12) measles (2) and bloody diarrhea (13) were the most frequent alerts in week 10, 2021
- A new rubella outbreak confirmed in Tambura county, WES.
- Malaria remains the top cause of morbidity and accounted for 41,112 cases (45.8% of OPD cases)
- A total of 2,252 COVID-19 alerts have been investigated with 2,145 (95.2%) being verified. Total of 9,554 COVID-19 confirmed cases and 104 deaths, CFR of 1.10%
- Other hazards include floods in over 47 counties; malaria in 2 counties and HEV in Bentiu PoC.

SURVEILLANCE PERFORMANCE



For the Integrated Disease Surveillance (IDSR)
network and Early warning alert and response
network (EWARN)



IDSR timeliness & completeness performance at State level for week 10 of 2021



Completeness States Ranking	States	Supporting Partners	Number of reporting sites	No. of HF's Reported on Time	Timeliness Percentage	No. of HF's Reported regardless of Time	Completeness Percentage
1st	WES	AMREF, World Vision, CUAMM, CDTY, OPEN	213	213	100%	213	100%
2nd	WBGZ	Cordaid, Health net TPO, CARE International, IOM, ALIMA	78	70	90%	78	100%
3rd	Lakes	Doctors with Africa (CUAMM)	113	106	94%	107	95%
4th	Jonglei	Nile Hope, MDM, JDF, LiveWell, CMD, HFO, EDA, CRADA, Malaria Consortium, CMA,ACSO,MEDAIR,CARE	101	94	93%	94	93%
5th	NBGZ	Malaria Consortium, Healthnet TPO, IRC, CEDS, IHO	131	121	92%	122	93%
6th	Unity	Cordaid, UNIDOR, IRC, CHADO, CARE International, CRADA, CASS,IOM,SP	94	74	79%	76	81%
7th	Warrap	GOAL, CCM, WVI, Malaria Consortium, UNKEA, Save the Children, MSF	119	87	73%	94	79%
8th	EES	Cordaid, HLSS, CCM	142	95	67%	103	73%
9th	Upper Nile	Cordaid, WVI, RI, IMC, NIDO, UNKEA, MC, SSAID, Samaritans Purse, IOM, HFD, TADO	122	87	71%	87	71%
10th	CES	HLSS, SSUHA, Healthnet TPO, IHO,GOAL,TRI-SS,THESEO,IMA,SSHCO	117	69	59%	69	59%
	South Sudan		1230	1016	83%	1043	85%

KEY

	<60%	Poor
	61%-79%	Fair
	80%-99%	Good
	100%	Excellent

The timeliness of IDSR reporting (supported by EWARS mobile) at health facility level was 83% and completeness was 89%. 9 states were above the target of 80% with highest reporting rate in WES & WBGZ

Reporting challenges: Insecurity, internet access challenges and lack of network.

IDSR timeliness & completeness performance at county level for week 10 of 2021 (1)



STATE	COUNTY	SUPPORTING PARTNER	Number of reporting sites	No. of HFs Reported on Time	Timeliness Percentage	No. of HFs Reported regardless of time	Completeness Percentage
Lakes	Cueibet	Doctors with Africa (CUAMM)	15	15	100%	15	100%
Lakes	Rumbek North	Doctors with Africa (CUAMM)	7	7	100%	7	100%
Lakes	Awerial	Doctors with Africa (CUAMM)	7	7	100%	7	100%
Lakes	Rumbek Centre	Doctors with Africa (CUAMM)	23	23	100%	23	100%
Lakes	Yirol West	Doctors with Africa (CUAMM)	12	12	100%	12	100%
NBGZ	Aweil Centre	Malaria Consortium(MC)	15	15	100%	15	100%
WBGZ	Wau	Cordaid	28	28	100%	28	100%
CES	Yei	SSUHA	17	17	100%	17	100%
NBGZ	Aweil East	IRC,TADO	36	35	97%	36	100%
Lakes	Wulu	Doctors with Africa (CUAMM)	14	13	93%	14	100%
WBGZ	Jur River	Cordaid	35	30	86%	35	100%
WBGZ	Raja	HealthNetTPO,ALIMA	15	12	80%	15	100%
Lakes	Rumbek East	Doctors with Africa (CUAMM)	24	23	96%	23	96%
CES	Kajo Keji	SSUHA,GOAL,TRI-SS,IJA	17	16	94%	16	94%
NBGZ	Aweil North	HealthNetTPO,IHO	33	30	91%	30	91%
NBGZ	Aweil West	HealthNetTPO	37	33	89%	33	89%
NBGZ	Aweil South	Malaria Consortium(MC),IHO	9	8	89%	8	89%
CES	Terekeka	HealthNetTPO	20	17	85%	17	85%
CES	Morobo	SSUHA,THESO,IJA	5	4	80%	4	80%
CES	Lainya	SSUHA	16	10	63%	10	63%
Lakes	Yirol East	Doctors with Africa (CUAMM),LIVEWELL	11	6	55%	6	55%
CES	Juba	HLSS,SSHCO	46	5	11%	5	11%

STATE	COUNTY	SUPPORTING PARTNER	Number of reporting sites	No. of HFs Reported on Time	Timeliness Percentage	No. of HFs Reported regardless of time	Completeness Percentage
Unity	Koch	CRADA,IRC.	6	6	100%	6	100%
Unity	Abiemnhom	Cordaid	4	4	100%	4	100%
Unity	Mayendit	CASS	12	12	100%	12	100%
WES	Nzara	World Vision International	20	20	100%	20	100%
WES	Nagero	World Vision International	10	10	100%	10	100%
WES	Mundri West	CUAMM	21	21	100%	21	100%
WES	Maridi	AMREF	26	26	100%	26	100%
WES	Ibba	AMREF	11	11	100%	11	100%
WES	Mundri East	CUAMM	19	19	100%	19	100%
WES	Yambio	World Vision International	42	42	100%	42	100%
WES	Ezo	World Vision International	27	27	100%	27	100%
WES	Mvolo	CUAMM	11	11	100%	11	100%
Unity	Panyijjar	IRC	15	14	93%	14	93%
WES	Tambura	World Vision International	28	26	93%	26	93%
Unity	Mayom	CASS,SP	14	12	86%	12	86%
Unity	Guit	CHADO	7	6	86%	6	86%
Unity	Rubkona	Cordaid,IRC,IOM,MSF	15	12	80%	12	80%
Unity	Leer	UNIDOR	11	7	64%	8	73%
Unity	Pariang	CARE International	11	1	9%	1	9%

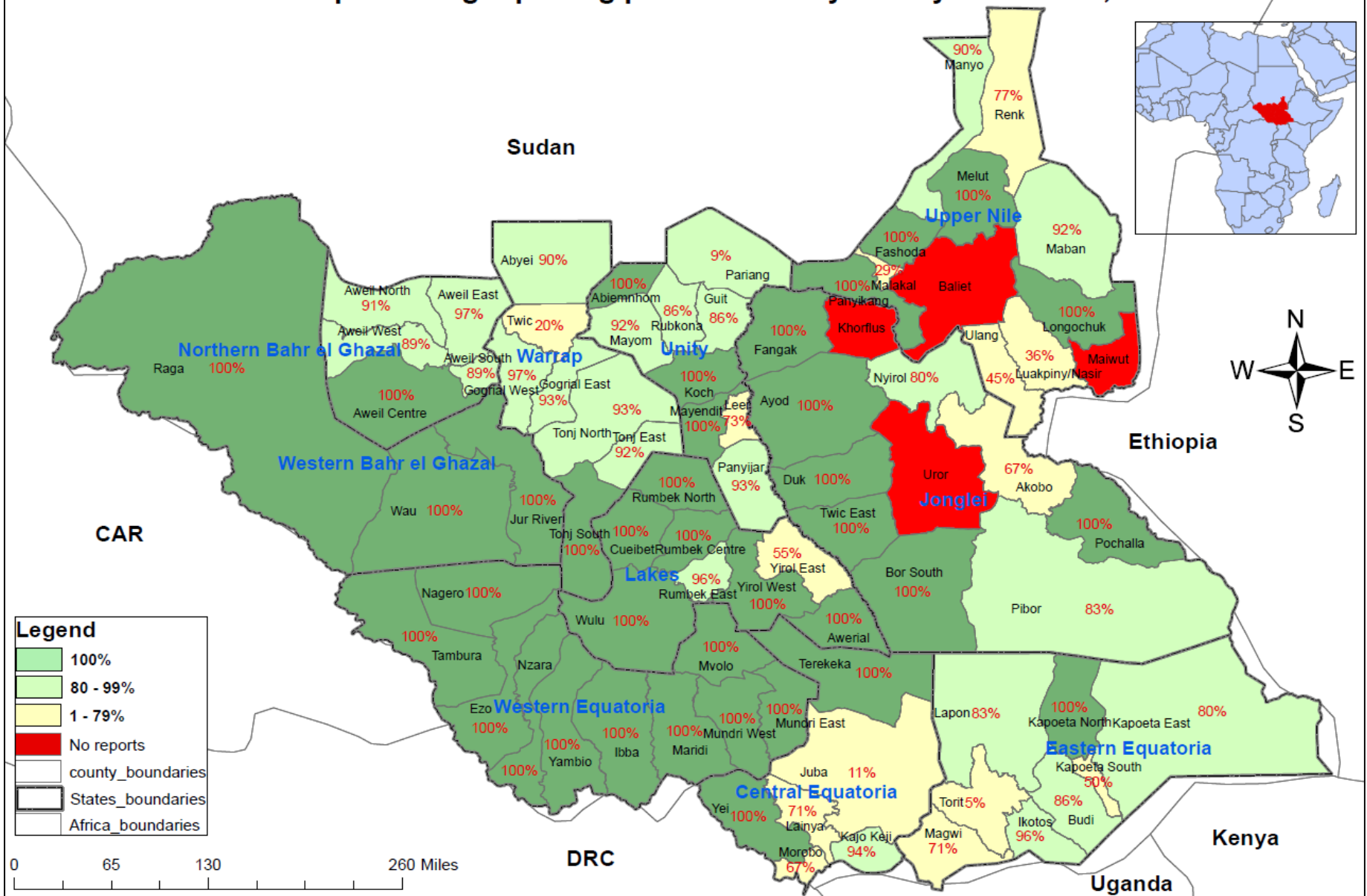
IDSR timeliness & completeness performance at county level for week 10 of 2021 (2)



	COUNTY	SUPPORTING PARTNER	Number of reporting sites	No. of HF's Reported on Time	Timeliness Percentage	No. of HF's Reported regardless of time	Completeness Percentage
Jonglei	Fangak	CMD,HFO	17	17	100%	17	100%
Jonglei	Pochalla	LIVWELL	7	7	100%	7	100%
EES	Ikotos	HLSS	27	26	96%	26	96%
EES	Kapoeta North	CCM	16	15	94%	15	94%
EES	Budi	Cordaid	21	15	71%	18	86%
Jonglei	Pibor	LIVWELL,CRADA,M EDAIR,CARE	6	5	83%	5	83%
EES	Lopa Lafon	HLSS	18	15	83%	15	83%
Jonglei	Nyirol	CMA, Malaria Consortium	10	8	80%	8	80%
Jonglei	Ayod	CMD,EDA	15	12	80%	12	80%
Jonglei	Duk	MDM + JDF	15	11	73%	11	73%
Jonglei	Twic East	MDM + JDF	11	8	73%	8	73%
EES	Magwi	HLSS	22	15	68%	15	68%
EES	Kapoeta East	CCM	12	3	25%	8	67%
Jonglei	Bor	MDM + JDF,ACSO	35	21	60%	21	60%
EES	Kapoeta South	CCM	10	5	50%	5	50%
Jonglei	Canal Pigi	IMC	11	3	27%	3	27%
Jonglei	Akobo	NILE HOPE	8	2	25%	2	25%
EES	Torit	Cordaid	20	1	5%	1	5%
Jonglei	Uror	Nile Hope,Malaria Consortium	8	0	0%	0	0%

STATE	COUNTY	SUPPORTING PARTNER	Number of reporting sites	No. of HF's Reported on Time	Timeliness Percentage	No. of HF's Reported regardless of time	Completeness Percentage
Warrap	Tonj South	CCM	12	12	100%	12	100%
Upper Nile	Fashoda	CORDAID,HFD	18	18	100%	18	100%
Upper Nile	Melut	WVI + RI	8	8	100%	8	100%
Upper Nile	Panyikang	IMC	4	4	100%	4	100%
Upper Nile	Longechuk	RI	9	9	100%	9	100%
Upper Nile	Akoka	IMC	5	5	100%	5	100%
Warrap	Gogrial West	GOAL	31	29	94%	30	97%
Warrap	Gogrial East	GOAL	15	14	93%	14	93%
Warrap	Tonj North	CCM	14	13	93%	13	93%
Warrap	Tonj East	CCM	12	11	92%	11	92%
Upper Nile	Manyo	CORDAID	10	9	90%	9	90%
Warrap	Abyei	AAA,Save the Children,MSF	10	8	80%	9	90%
Upper Nile	Renk	WVI + RI	13	10	77%	10	77%
Upper Nile	Maban	WVI,RI,Samaritans Purse	17	12	71%	12	71%
Upper Nile	Ulang	UNKEA,RI,TADO	14	5	36%	5	36%
Upper Nile	Luakpiny Nasir	UNKEA,RI	15	5	33%	5	33%
Upper Nile	Makal	IMC	7	2	29%	2	29%
Warrap	Twic	GOAL	26	0	0%	5	19%
Upper Nile	Ballet	IMC	4	0	0%	0	0%
Upper Nile	Maiwut	RI	5	0	0%	0	0%

Map showing reporting performance by county in week 10, 2021



Disclaimer: The boundaries and names shown and the designations used on this map do not imply the expression of any opinion whatsoever on the part of the World Health Organization concerning the legal status of any country, territory, city or area or of its authorities, or concerning the delimitation of its frontiers or boundaries.



Surveillance: EWARS performance indicator by partner for week 10 of 2021

Partner	HF's	Reporting		Performance	
PARTER	Number of reporting sites	# of reports received on Time	No. of HF's Reported regardless of time	Timeliness	Completeness
IRC	1	1	1	100%	100%
Medicaire	2	2	2	100%	100%
Medair	1	1	1	100%	100%
UNH	2	2	2	100%	100%
World Relief	2	2	2	100%	100%
CMD	1	1	1	100%	100%
IOM	12	12	12	100%	100%
RHS	1	1	1	100%	100%
HFO	2	2	2	100%	100%
ALIMA	3	3	3	100%	100%
IMC	6	6	6	100%	100%
GOAL	2	2	2	100%	100%
TADO	2	2	2	100%	100%
HFD	6	6	6	100%	100%
SSHCO	1	1	1	100%	100%
HAA	2	2	2	100%	100%
UNIDOR	2	2	2	100%	100%
TRI-SS	2	2	2	100%	100%
MSF-E	6	4	4	67%	67%
MSF-H	5	3	3	60%	60%
TOTAL	61	57	57	93%	93%

Both completeness timeliness were 93% for weekly reporting in week 10, 2021 for partner-supported clinics serving IDP sites.

EVENT-BASED SURVEILLANCE



Alert management including detection; reporting;
verification; risk assessment; & risk
characterization





State	Acute jaundice syndrome	Acute Respiratory Infections (ARI)	Acute Watery Diarrhoea	AFP	Bloody Diarrhoea	Malaria	Measles	Covid-19	Total alerts
CES			3		1				4
EES		2	2		8	3		1	16
NBGZ		1				2	1		4
Unity	1	1	1	1		3	1	4	12
Upper Nile		6	5		2	2			15
Warrap			1		2			1	4
WBGZ		2	5			4		2	13
WES			7			29			36
Total alerts	1	12	24	1	13	43	2	8	104

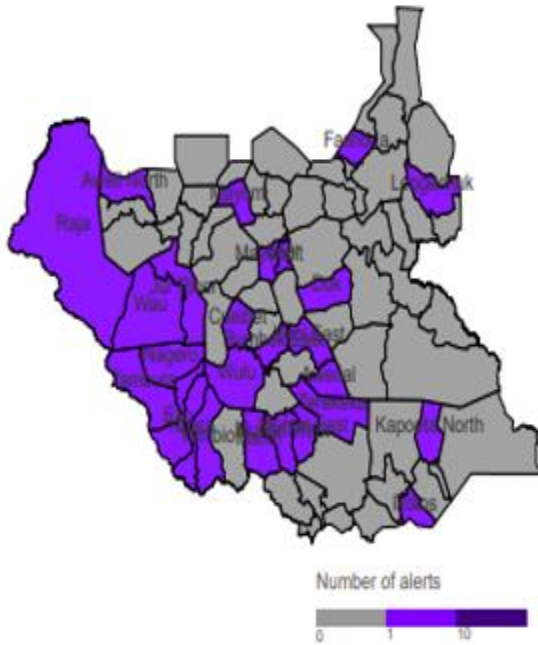
During this week:

- **12 ARI alerts:** 2 from EES sample were collected and tested Negative for COVID-19 , 1 from NBGZ its sample was collected and tested Positive for COVID-19 in the state Sentinel Site, 6 from Upper Nile State sample collected and tested Negative for COVID-19, 2 from WBGZ state sample collected and all tested positive for COVID-19, 1 from Unity state sample collected and all tested positive for COVID-19
- **24 AWD alerts:** 3 from CES, treated for diarrhea , 2 from EES treated for diarrhea, 1 from Unity treated for diarrhea, 5 from Upper Nile State treated as normal diarrhea, 1 from Warrap it was treated as normal diarrhea, 5 from WBGZ State treated as normal diarrhea, 7 from WES State also treated given for Diarrhea.
- **13 ABD alerts:** 1 from CES patients treated for diarrhea, 8 from EES treated for mild diarrhea, 2 from Upper Nile Treated for normal diarrhea, 2 from Warrap treated for diarrhea.
- **43 Malaria alerts:** 3 from EES , 2 from NBGZ, 2 from Upper Nile, 2 from Warrap, 3 from Unity, 29 from WES. All are due to the high increase of malaria cases in the Country.
- **1 AJS alerts:** from Unity State which is a true alert of Jaundice syndrome, reported in area of confirmed cases of jaundice.
- **1 AFP alerts:** 1 from Unity, Mayom, Kuerbuone, Mayom PHCC sample collected awaiting transportation to Juba
- **8 COVID-19 alerts:** 1 from EES investigated, 4 from Unity, 1 from Warrap and 2 from WBGZ all tested positive for COVID-19
- **2 Measles Alerts:** 1 from NBGZ Aweil Centre, Bhar Mayen, Bhar Mayen PHCC AND 1 From Unity, Bentiu PoC, World Relief Sector 2 Clinic sample collected and will be send to Juba.

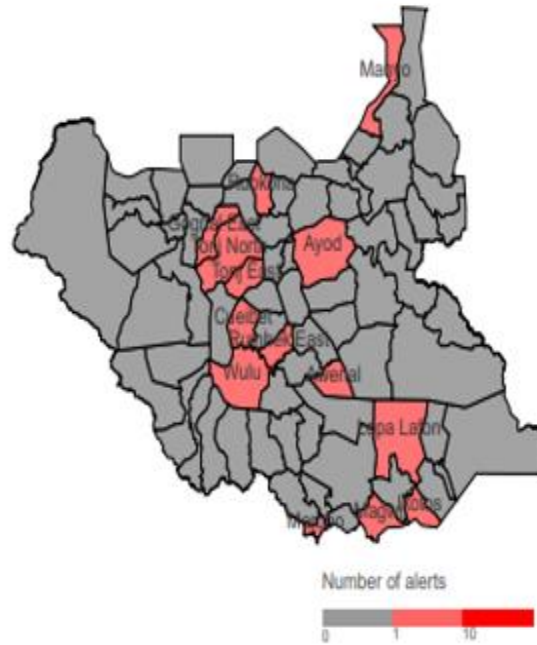
Alert: Map of key disease alerts by county of week 10 of 2021



Map 2a | Malaria (W10 2021)



Map 2b | Bloody diarrhoea (W10 2021)



Map 2c | Measles (W10 2021)



W10	Cumulative (2021)	
0	5	Low risk
5	5	Medium risk
0	31	High risk
1	15	Very high risk

65%	82%	% verified
0%	0%	% auto-discarded
1%	3%	% risk assessed
0%	2%	% requiring a response

SUSPECTED OUTBREAKS



Major suspected outbreaks in South Sudan in
2020



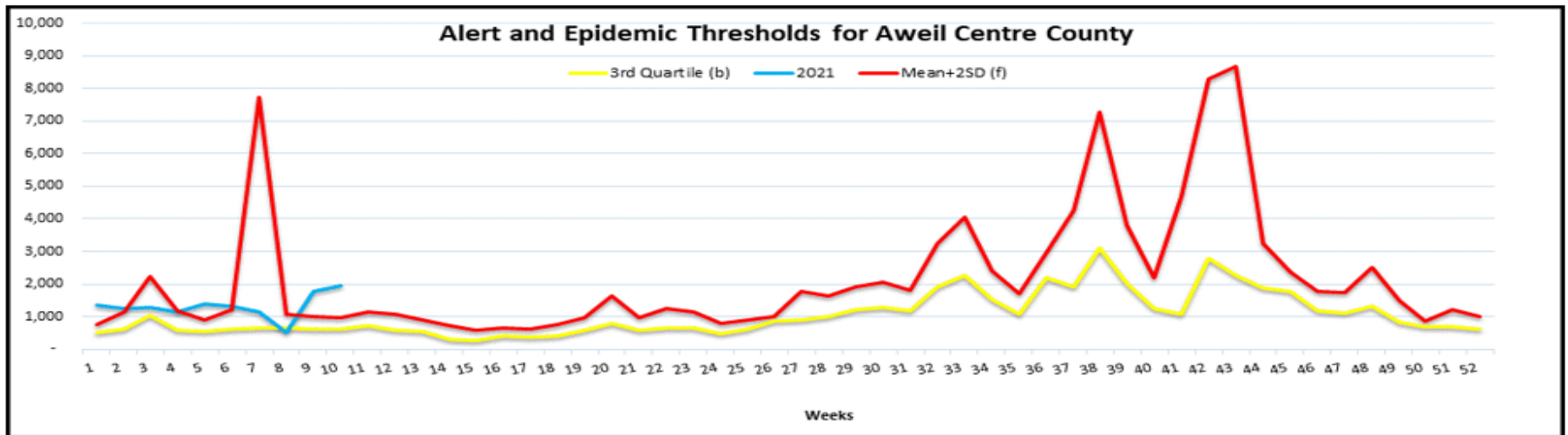


Malaria was the leading cause of morbidity and mortality, accounting for **45.8%** of all morbidities and **85.8%** of all mortalities this week.

There were 2 county with malaria trends that exceeded the threshold (third quartile of trends for the period 2013-2017) and these include the following:

1. **NBGZ State (Aweil Center & Aweil East)**
2. **In the PoC sites;** malaria is one of the top cause of morbidity with respective proportional morbidity reported as **Bentiu (5%); Malakal (7%); Juba (31%)** and **Wau (14%)** PoCs of OPD consultations, respectively.

Aweil Center



ACTIVE OUTBREAKS AND PUBLIC HEALTH EVENTS



Brief epidemiological description and public health response for active outbreaks and public health events





JONGLEI

- **3. Alali, Akobo East:** Bor IRNA (27 Feb): 5,000 estimated flood-affected people. Only 130 HHs (700 individuals) remain in Alali Center (Baba Boma).
- Due to the climatic shocks-floods and drought since 2015, seriously impacting livelihoods, population of 7,000 left. Dire humanitarian situation of HHs that remained in Alali, lacking basic services such as food, health, education, and access to market, only 1 functional borehole.
- The main needs for urgent assistance include food, health (essential drugs), NFIs, WASH soaps, and livelihood support (seeds, tools, and fishing gear). ICCG Bor to agree on response.

Update on floods and response

- Unseasonal flooding in several areas in Jonglei, Upper Nile, and Unity State was reported to have displaced almost 80,000 people across the three states.

- Rainfall forecast showed that from March to May 2021, above-normal rainfall is expected over the eastern part of the country.
- The probabilistic rainfall forecast showed that the risk of flooding for the third year is high.
- A rapid multi-agency assessment was carried out on 27 February 2021 in Alali Payam of Akobo East County. The humanitarian organizations in Bor have held a meeting on 1 March 2021 to outline a response strategy for the population.
- The humanitarian team in Malakal is preparing to respond to the populations affected by the unseasonal flooding in Fashoda, Panyikang and Aburoc.
- Partners in Unity State are expected to reschedule their response mission to Mayom and assessment missions to Mayendit and Panyijar after the earlier planned missions were aborted.



Food Insecurity (1)

- South Sudan is facing its highest levels of food insecurity and malnutrition. The upcoming lean season at mid-year is expected to be the most severe on record. Intensification of efforts by the humanitarian community to reach the six priority counties has been ongoing since December 2020.
- Some 182 047 (78% of the target) people were reached with emergency food assistance in February 2021.
- A high-level mission from Juba led by the Humanitarian Coordinator in South Sudan visited Pibor and Akobo on 9 March 2021 to assess the ongoing humanitarian response.

Health Cluster Response in IPC 5 Counties:

- The Health Cluster partners continue to scale up health response by ensuring access to the primary health services across the six 'Priority 1' counties through mobile and static facilities.
- Over 92 000 consultations were conducted by health facilities across the six counties since week 01 of 2021.
- Two rounds of the oral cholera vaccination campaign in Pibor have been completed reaching 86 313 (93%) in the first round and 98 458 (106%) during the second round that ended on 22 February 2021. Plans for mop-up are underway.
- Furthermore, polio campaigns in response to the ongoing (cVDPV2) outbreak have been concluded in Akobo (33 176 vaccinated), Pibor (48 836 vaccinated), Aweil South (31 603 vaccinated) and Tonj South (44,090 vaccinated).



Food Insecurity (2)

Health Cluster Response in IPC 5 Counties:

- WHO continues to ensure the availability of adequate stock of emergency health kits and other essential supplies to the partners and health facilities in the priority counties.
- WHO MMT continues to respond to the needs of affected populations in the Greater Pibor Administrative Area (GPAA) through the provision of mobile health and nutrition services in areas cut-off from routine health services.
- WHO conducted supportive supervision and on-the-job training for health care workers in the Pibor PHCC stabilization center from 16 -23 February 2021 to improve knowledge and skills on case management of severe acute malnutrition with medical complication and reporting system in the stabilization center.

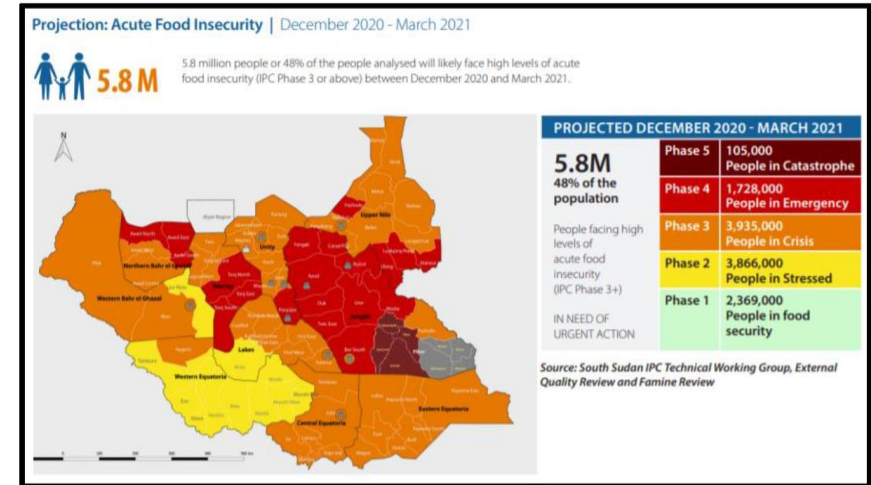
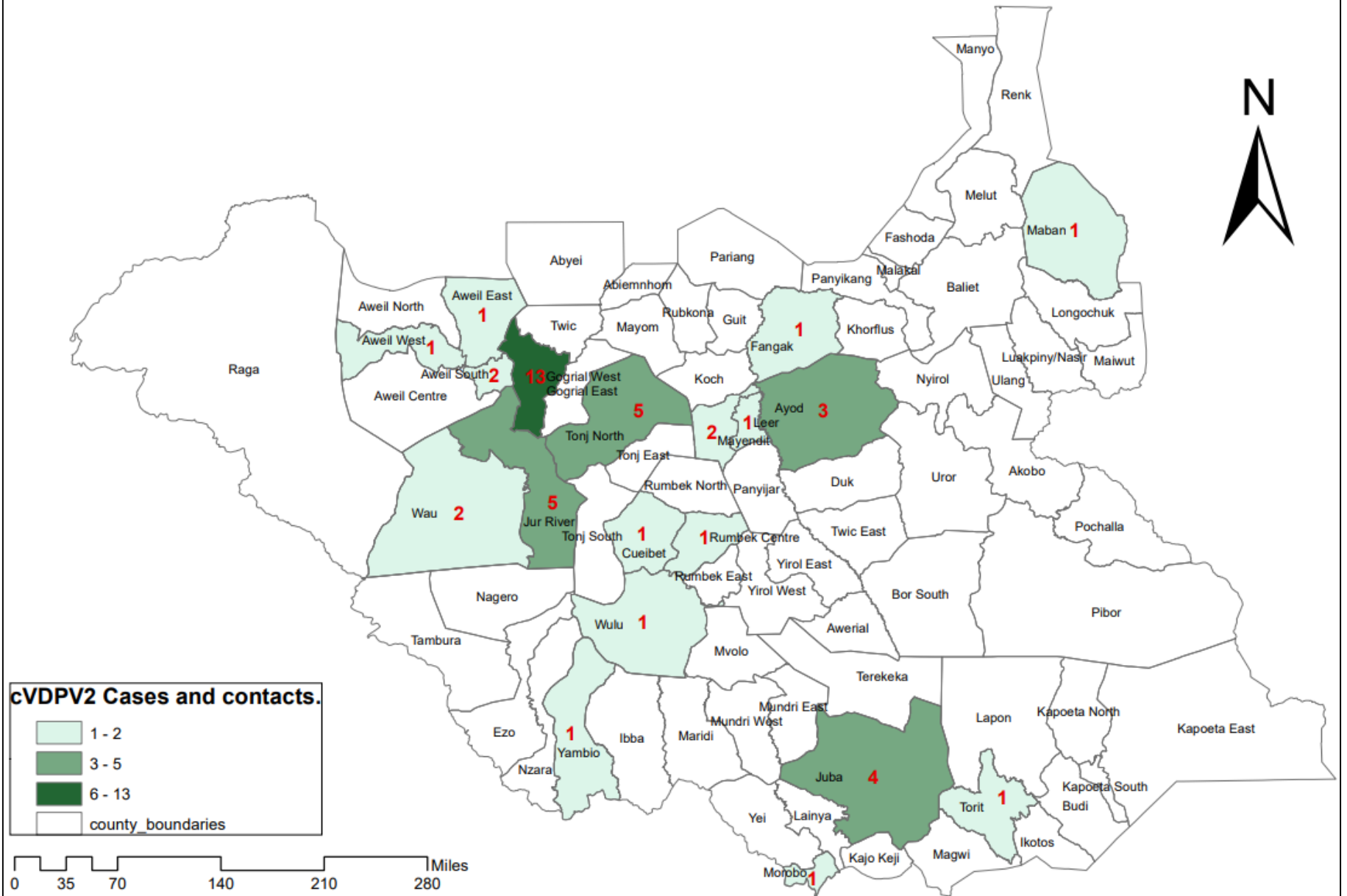


Figure 1: population estimates by IPC Phase and State based on the compilation of the South Sudan IPC Technical Working Group

- The emergency nutrition team (UNICEF, WHO, JAM, PLAN, OCHA) participated in a joint nutrition team mission to Pibor on mapping nutrition services delivery in Gumuruk, Lekuangole, Pibor Payam on 18 February 2021.
- In February 2021, 115 under five year old children were admitted and treated in the 12 stabilization centers in the 6 priority counties

- ❑ The polio outbreak was declared on the 18th of Sept 2020 and currently, 51 AFP cases have been confirmed positive for cVDPV2.
- ❑ This week, four notifications of cVDPV2 cases from the lab in Yirol West, Mayom, Gogrial East, and Panyijar. Last week, one cVDPV2 case was notified from sample collected from Juba.
 - Three of the cases are from 2020, while 2 of the cases are reported with a date onset of paralysis in January 2021. The last date of onset of the cVDPV2 case is 25th January 2021.
 - Clinical and epidemiological investigation of new cases is ongoing
 - Except the new cases reported in January 2021, all counties with cases have been covered with two doses of mOPV2 campaign including just concluded NID campaign.
 - Surveillance enhancement including increasing the frequency of active surveillance is ongoing at all level.
 - The country is planning to conduct a Nationwide campaign with bOPV2 targeting over 3 million under-5 children starting in April 2021, and preparatory activities are underway.

Distribution of cVDPV2 cases and contacts by county.



Disclaimer: The boundaries and names shown and the designations used on this map do not imply the expression of any opinion whatsoever on the part of the World Health Organization concerning the legal status of any country, territory, city or area or of its authorities, or concerning the delimitation of its frontiers or boundaries.



Aetiological agent	Location (county)	Date first reported	New cases since last bulletin	Cumulative cases to date (attack rate %)	Interventions			
					Case management	Vaccination	Health promotion	WASH
Ongoing epidemics								
Hepatitis E	Bentiu PoC	03/01/2018	8	504 (0.015)	Yes	No	Yes	Yes
cVDPV2	13 counties	11/06/2020	4	47 (0.085)	Yes	Yes	Yes	Yes
		18/09/2020						



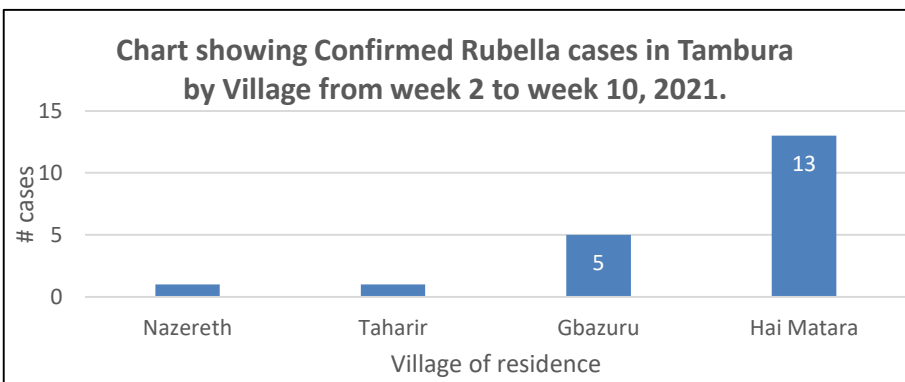
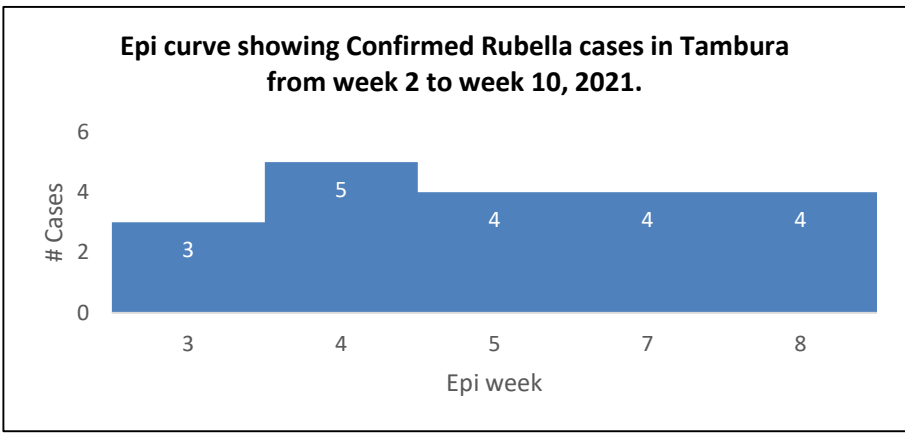
Measles Lab update

S/N	County	Total Number of Samples tested	Measles IgM Positive	Rubella IgM Positive
1	TAMBURA	12	1	5
2	IBBA	2	0	1
3	NZARA	2	0	0
4	MUNDRI	2	0	0
5	TORIT	2	0	0
6	JUBA	1	0	0
7	WULU	1	0	1
8	WAU	3	0	1
9	JUR RIVER	1	0	0
10	TONJ SOUTH	1	0	0
	TOTAL	27	1	8

- From Jan-to March 2021 a batch of Measles samples from over 10 counties were tested
- Of all the **27** samples for 2021, only one sample tested positive for measles IgM and 8 positive for Rubella IgM
- Five of the Rubella IgM positive samples are from Tambura County indicating an outbreak in the county



Confirmed Rubella outbreak in Tambura County



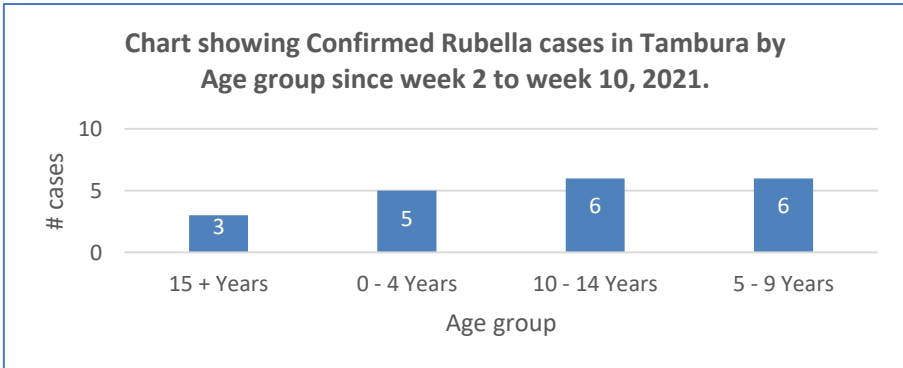
Age group	Cases	Percentage	CUM. %
5 - 9 Years	6	34%	34%
10 - 14 Years	6	34%	69%
0 - 4 Years	5	21%	90%
15 + Years	3	10%	100%
Grand Total	20	100%	

Descriptive epidemiology

- WES started to report cases of suspected Measles in week 2, 2021. Up to week 10, 2021 a total of 32 cases have been listed.
- 12 samples were collected for testing and only one tested measles IgM positive and 5 samples tested Rubella IgM positive
- There were (4) new case reported in week 10, 2021
- No deaths were reported
- 60% are female and 40% are male.
- Age group 0- 9 years had the most cases with (68%) .
- Most affected area is Hai Matara with 13 cases.

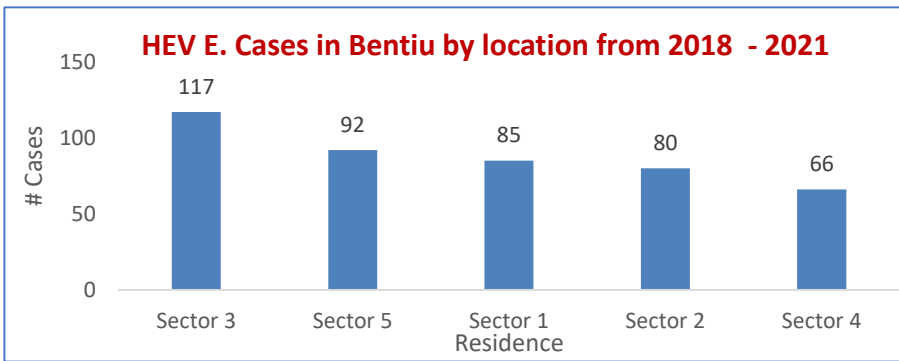
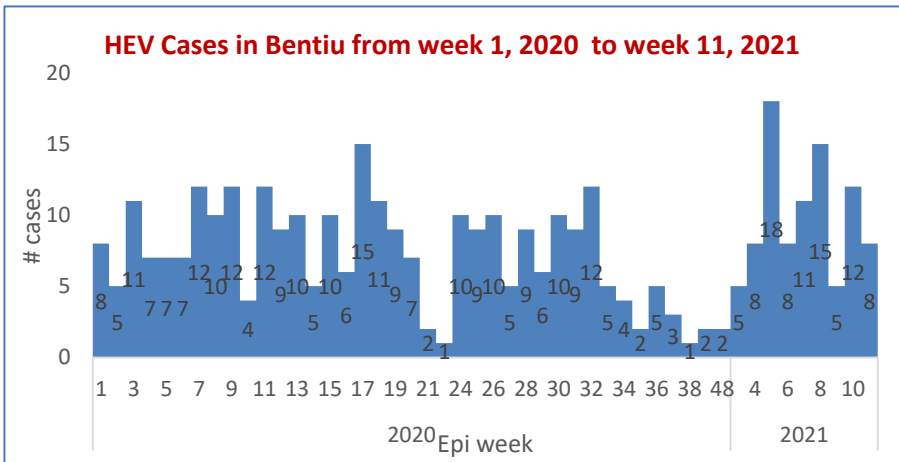
Response Actions:

- Surveillance and line-listing are ongoing
- Case management is ongoing





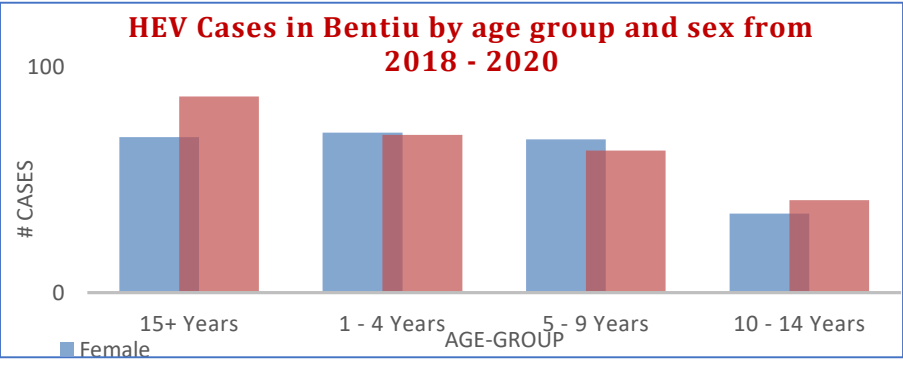
Hepatitis E, Bentiu PoC (1)



Age-Group	Alive	Dead	Grand Total	Percentage	CFR	Cum. %2
1 - 4 Years	141	0	141	28%	0%	28%
10 - 14 Years	76	0	76	15%	0%	43%
15+ Years	153	3	156	31%	2%	74%
5 - 9 Years	129	2	131	26%	2%	100%
Grand Total	499	5	504	100%	0.01	

Descriptive epidemiology

- The persistent transmission of HEV in Bentiu PoC continues with **504** cases since beginning of 2019
- There were **(8)** new cases reported in week 10, 2021
- All the cases were managed as outpatient cases except for seven cases who were admitted
- 5 deaths reported in 2019 and 2020
- 49% are female and 51% are male.
- Age group less than 15 years had the most cases with (69%) cases.
- At risk of adverse outcomes when infected in the 3rd trimester of pregnancy
- Use of unsafe drinking water likely to be source of infection
- Up to week 10, 2021; there were 504 cases of HEV in Bentiu PoC including 5 deaths (CFR 0.9%)
- There is an upsurge of HEV cases since the beginning of 2021. **There-fore calls for review to establish and address the WASH gaps.**



Recommendations

- Supportive case management guided by the HEV protocol is ongoing
- KEV messages on HEV prevention should continue within the community through HPs, CHWs and Kondial Radio
- With current COVID -19 Pandemic Outbreak, WASH partners to increase the coverage of hand washing facilities within the PoCs community.
- Other Wash intervention like increasing the access for clean water and improving the water storage in the affected individuals should be made urgently by distributing the water storage containers that will be the only way to mitigate this problem and stop the HEV outbreak.
- The WASH Cluster/HEV task force should engage in group discussion with Community leaders and woman group at water distribution points to understand their opinions on issue of Collapsing Jerry cans distribution.
- Monitoring the FRC levels at the taps stands in the different sectors, and the concentration of chlorination should maintain at 0.5-1mg/L as the point of collection
- There is an upsurge of HEV cases since the beginning of 2021. This therefore calls for review to establish and address the WASH gaps.



Aetiological agent	Location (county)	Date first reported	New cases since last bulletin	Cumulative cases to date (attack rate %)	Interventions			
					Case management	Vaccination	Health promotion	WASH
Controlled epidemics								
Measles	Juba	21/11/2019	NR	6(0.1667)	Yes	No	Yes	N/A
Measles	Tonj East	12/12/2019	NR	61(0.98)	yes	Yes	Yes	N/A
Measles	Bor	17/01/2020	NR	14(0.214)	yes	No	yes	N/A
Measles	Jebel Boma	10/12/2019	NR	96(0.063)	yes	No	Yes	N/A
Measles	Kapoeta East	18/01/2020	NR	16(0.625)	yes	No	Yes	N/A
Measles	Aweil East	29/12/2019	NR	664 (0.127)	Yes		No	Yes
Measles	Pibor	27/1/2020	NR	355 (0.0028)	Yes		Yes	Yes
Measles	Wau	5/1/2020	NR	39 (0.051)	Yes		Yes	Yes
Measles	Ibba	25/1/2020	0	55 (0.36)	Yes		Yes	Yes



EBOLA VIRUS DISEASE (EVD)

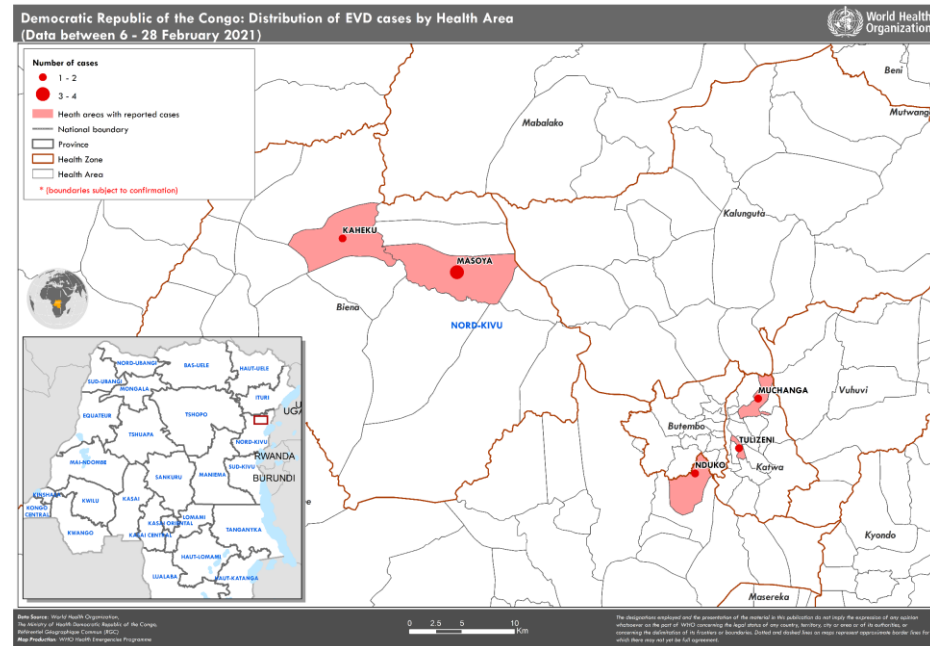
DRC, North Kivu EVD Outbreak (10th March 2021)

- No confirmed case on 10/03/2021 and 9th consecutive day without new case confirmed; Validation of one (01) probable case in the ZS de Biena.
- In the last 21 days Seven (**07**) new confirmed cases;
- A probable case validated in the ZS of Although a ;Three (03) ZS (Biena, Butembo and Katwa) reported cases; and (06) AS affected (Biambwe, Masoya and
- Kaheku for Biena ZS; Tulizeni for the Katwa ZS and
- Vutsundo for the ZS of Butembo.

Since the start of the epidemic

Cumulative cases: 11 confirmed cases and 1 probable case; The overall lethality is 50% (n = 12);

Two health workers already have been infected with EVD, i.e. 16.66% of all cases.



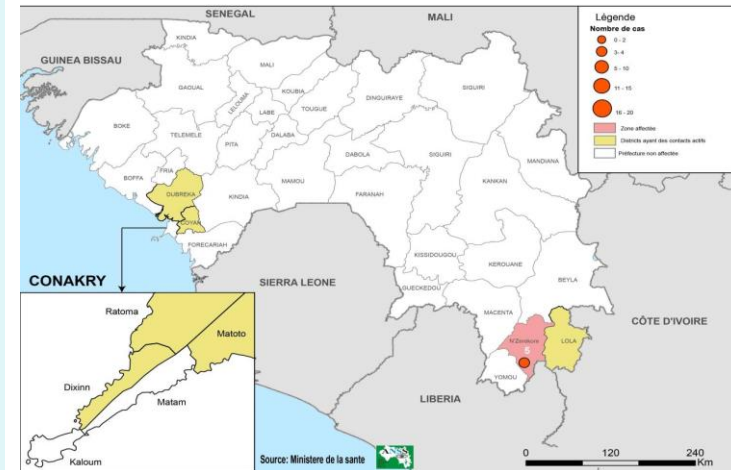
EVD Outbreak in Guinea as of 10th March, 2021 (n = 18)

Surveillance

- Zero new confirmed case reported today;
 - **33** (5 community deaths) alerts received
 - **27/33** (82%) investigated;
 - **09** validated.
- A total of **18** cases were reported since the beginning of the outbreak (14 confirmed, including 5 deaths and 4 probable), i. e. CFR=50%.
 - One Health district remain active (i. e. have reported at least one confirmed case);
 - Zero health districts are on alert (i. e. have at least one contact) out of 38 in the country (Pending confirmation of the exact location of the new contacts displaced);
 - **341/365** contacts followed up, i. e. a follow-up rate of 93% (excluding new contacts registered);
 - 4 displaced contacts, 3 internal to Guinea and 1 outside to Guinea (Ivory Coast). Actions are underway and a regular update will be made.

Vaccination

- 198 participants vaccinated today (12 high-risk contacts, 186 contacts of contacts and 0 probable contacts) including 50 frontline workers ;
- Cumulatively, 2636 participants were vaccinated (279 high-risk contacts, 1924 contacts of contacts and 433 probable contacts) including 853 frontline workers.



EBOLA VIRUS DISEASE[EVD] PREPAREDNESS IN SOUTH SUDAN



Brief on the Ebola situation in DR Congo and updates on EVD preparedness in South Sudan



COVID-19 Updates



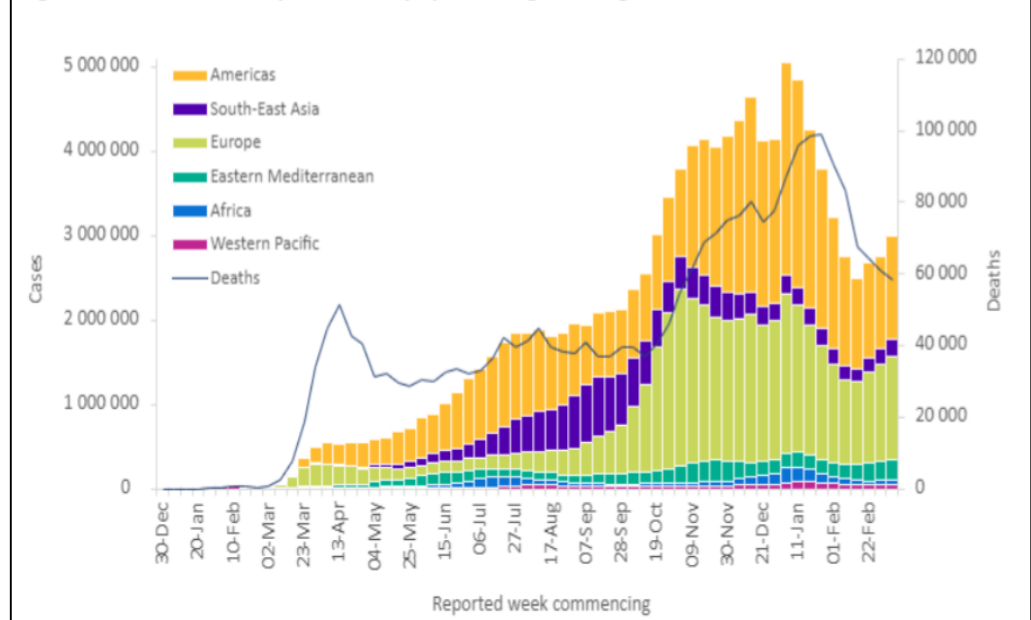
COVID-19 Virus Situation Summary



Situation update as of 14th March, 2020

- The COVID-19 pandemic initial cases were detected in Wuhan China
- Globally **>119 218 587** million cases (**>2 642 673** deaths)
- Africa **>2 948 478** million cases (**>74 688** deaths)

Figure 1. COVID-19 cases reported weekly by WHO Region, and global deaths, as of 14 March 2021**



WHO: <https://www.who.int/health-topics/coronavirus>

COVID-19 Response in South Sudan as of 14th March, 2021



- **9,445** confirmed COVID-19 cases in South Sudan; > **85%** in Juba with **104** deaths and a case fatality rate (CFR) of **1.10%**. Total **13,813** contacts identified, quarantined, & undergoing follow up
- Implementation of priorities; risk communication and community engagement; active case search and testing; quarantine for contacts; isolation of confirmed cases, infection prevention and control; and management of cases are currently underway
- The overall response currently led by the COVID-19 National level taskforce, Medical Advisory Panel and the COVID-19 National Steering Committee
- COVID-19 cases have increased since the beginning of 2021. South Sudan is currently experiencing the second wave of COVID-19 transmission with PCR test positivity rates rising from 2.7% in week 1 of 2021 to **12.9%** in week 10 of 2021.
- A monthlong partial lockdown imposed on 3 Feb 2021 that entails a ban on social gatherings, closure of schools and other institutions; entertainment places and limiting the number of passengers in public vehicles.

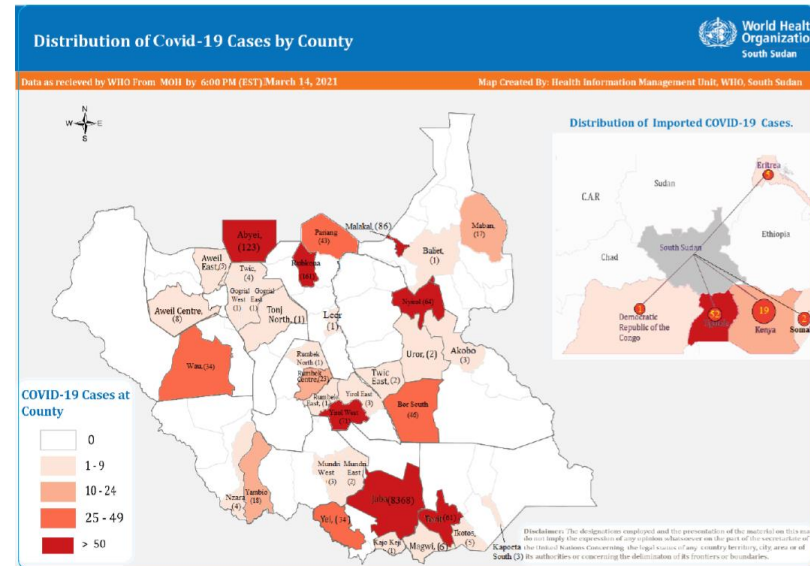


Figure 1. Map of cumulative reported COVID-19 cases, by county

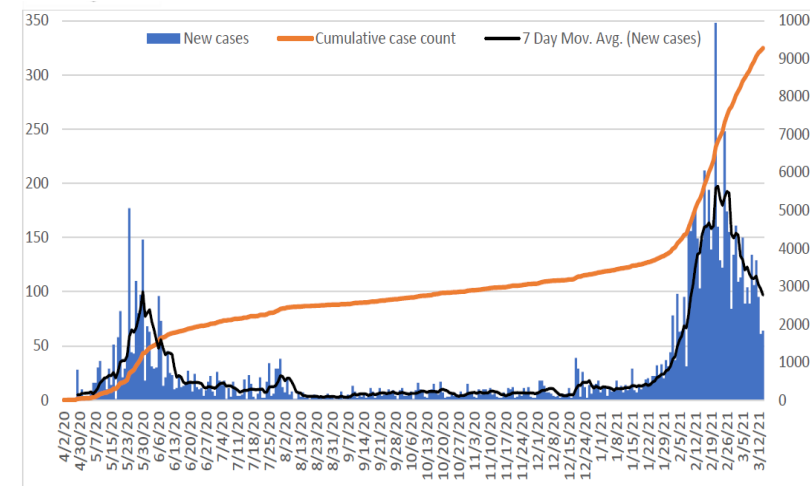


Figure 2. Epidemiological curve of reported cases through Week 10, showing new cases (blue bars), rolling 7-day average of reported cases (black line), and total cumulative reported cases (yellow line)

Overall Conclusions and Recommendations



Conclusion

- The overall IDSR and EWARN reporting performance in week 10, 2021 is above the target of 80%. (9) states were above 80%
- **9,445** confirmed COVID-19 cases in South Sudan; >85% in Juba with **104** deaths (CFR of 1.15%). Total **13,813** contacts identified, quarantined, & undergoing follow up
- A total of **2,252** COVID-19 alerts have been investigated with **2,145 (95.2%)** being verified
- With eight outbreaks confirmed in 2020; measles remains the most frequent vaccine preventable disease
- A new rubella outbreak confirmed in Tambura county
- **No** measles outbreak conformed in 2021.
- Suspected measles outbreak in WES- Tambura county.
- Given the COVID-19 pandemic, it is critical that measures are stepped up to contain its spread.

Recommendations

- All partners should support CHDs & State Ministries of Health to undertake IDSR/EWARN reporting
- All health facilities should report, and conduct case-based investigation of suspect measles cases and routine measles immunization should be strengthened in all counties
- Strengthen capacities for COVID-19 containment through identifying and testing suspect cases, isolating confirmed cases, and quarantining contacts



Thanks to the State Surveillance Officers, County Surveillance Officers and Health Facility in-charges for sharing the weekly IDSR data

Thanks to all partners for supporting IDSR weekly reporting and sharing the line lists

To access the IDSR bulletins for 2020 use the link below:

<https://www.afro.who.int/publications/south-sudan-weekly-disease-surveillance-bulletin-2020>



This bulletin is produced by the Ministry of Health with Technical support from WHO

For more help and support, please contact:

Dr. John Rumunu

Director General Preventive Health Services
Ministry of Health
Republic of South Sudan
Telephone: +211924767490
Email: ori.moiga@gmail.com

Mr. Angelo Majak Goup

A/Director, Emergency Preparedness and Response
Ministry of Health, RSS
Tell: +211929830530
Emails: majakdegoup99@gmail.com

IDSR Bulletin Editorial Team

- 1.Mr. Ajak Ater, MoH - Email: ajakater014@gmail.com
- 2.Ms. Sheila Baya, WHO- Email: bayas@who.int
- 3.Mr. Robert Lasu Martin, WHO -Email: lasur@who.int
- 4.Mrs. Rose Dagama , WHO - Email: dagamaa@who.int
- 5.Dr. Abraham Adut, WHO- Email: abenegoa@who.int
- 6.Dr. Alice Igale Lado, WHO - Email: ladua@who.int
- 7.Dr. Joseph Wamala, WHO - Email: wamalaj@who.int
- 8.Dr. Argata Guracha Guyo, WHO - Email: guyo@who.int

Notes

WHO and the Ministry of Health gratefully acknowledge the surveillance officers [at state, county, and health facility levels], health cluster and health pooled fund (HPF) partners who have reported the data used in this bulletin. We would also like to thank ECHO and USAID for providing financial support.

The data has been collected with support from the EWARS project. This is an initiative to strengthen early warning, alert and response in emergencies. It includes an online, desktop and mobile application that can be rapidly configured and deployed in the field. It is designed with frontline users in mind, and built to work in difficult and remote operating environments. This bulletin has been automatically published from the EWARS application.

More information can be found at <http://ewars-project.org>

