



## NAMIBIA COVID-19 SITUATION REPORT NO. 445

Outbreak Name	COVID-19 outbreak	Country affected	Namibia
Date & Time	06.06.2021 17h00	Investigation start Date	13 March 2020
Prepared by	Surveillance Team		

### HIGHLIGHTS/SITUATION UPDATE (06/06/2021)

#### CUMULATIVE

Tested 446 570

Confirmed 59 092

Active 5 771

Recovered 52 390

Death 920

#### TOTAL TODAY

Tested 1 152

Confirmed 385

Active 5 771

Recovered 358

Death 8

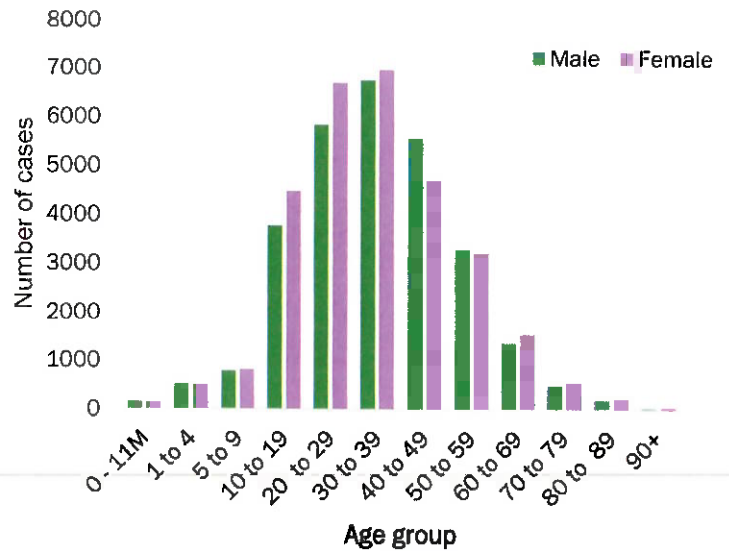
- A total of **59 092** cases have been recorded to-date, representing **2%** of the total population (**2 550 226**).
- More female cases **30 182 (51%)** have been recorded compared to male cases **28 910 (49%)**.
- Of the total confirmed cases, **2 598 (4%)** are Health Workers.
- **2 080 (80%) State; 514 (20%) Private, 4 (0.2%) Non-Governmental Organizations.**
- **2213 (85%) recoveries and 10 (0.4%) deaths.**
- The recovery rate now stands at **87%**.
- **All fourteen (14) regions have reported confirmed cases; Khomas and Erongo regions reported the highest with 21 829 (37%) and 9 708 (16%) respectively.**
- **Of the total fatalities, 773 (84%) are COVID-19 deaths while 147 (16%) are COVID-19 related deaths. The case fatality rate now stands at 2%.**

**Table 1: Distribution of confirmed COVID-19 cases by region, 06 June 2021**

Region	Total No. of cases	Active cases	Recoveries	Cumulative Deaths	Cumulative deaths with co-morbidities	Non-COVID deaths	Health Workers
Erongo	9 708	460	9 085	158	143	5	260
Hardap	3 890	544	3 282	64	40	0	102
//Kharas	3 617	186	3 370	61	51	0	157
Kavango East	2 113	142	1 945	26	19	0	138
Kavango West	238	8	227	3	3	0	13
Khomas	21 829	3 358	18 138	332	283	1	1 088
Kunene	1 696	35	1 641	20	20	0	60
Oshana	1 489	119	1 345	23	18	2	76
Omaheke	1 487	48	1 405	34	28	0	53
Omusati	1 479	205	1 259	15	11	0	46
Oshana	3 517	127	3 332	57	37	1	268
Oshikoto	3 089	88	2 972	27	23	2	146
Otjozondjupa	4 078	394	3 599	85	65	0	149
Zambezi	862	57	790	15	11	0	42
<b>Total</b>	<b>59 092</b>	<b>5 771</b>	<b>52 390</b>	<b>920</b>	<b>752</b>	<b>11</b>	<b>2 598</b>

## EPIDEMIOLOGICAL SITUATION IN NAMIBIA

- Of the total confirmed cases, **36 764 (62%)** are in the 20-49 years age-brackets which constitutes the majority of the recorded cases.
- A total of **9 931 (17%)** of the confirmed cases are among the 5-19 years category.
- The under 5 years age group make up **1 330 (2%)** of the total cases whereas, **4 482 (8%)** are above 60 years of age.



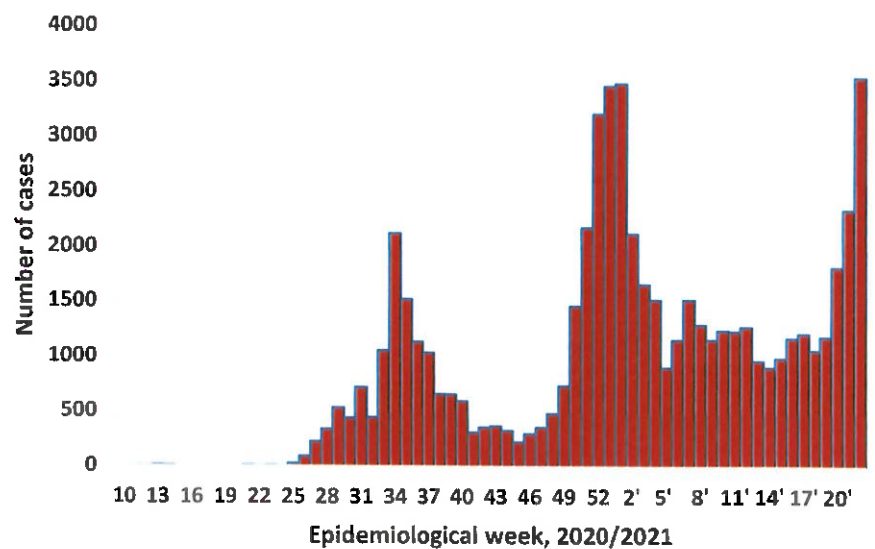
**Figure 1: Age and Sex distribution of COVID-19 confirmed cases 06 June 2021**

**Table 2: Distribution of hospitalization of confirmed cases by region, 06 June 2021**

Region	Hospitalized confirmed cases	Intensive Care Unit
Erongo	33	8
Hardap	12	0
//Kharas	26	2
Kavango East	3	0
Kavango West	0	0
Khomas	155	39
Kunene	3	0
Ohangwena	9	0
Omaheke	8	0
Omusati	7	0
Oshana	31	12
Oshikoto	7	2
Otjozondjupa	15	0
Zambezi	6	0
<b>Total</b>	<b>315</b>	<b>63</b>

- The highest peaks of **3 485 (6%)** and **3 544 (6%)** cases were recorded during week 1 and 22 of 2021 respectively (Figure 2).

- The National Call Center continues operations for 24 hours daily.
- Today (06/06/2021), **591** calls were answered including **8** alerts.

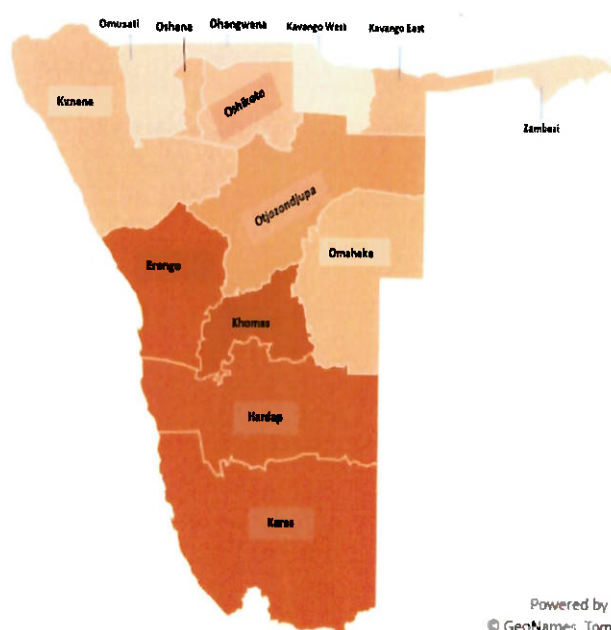


**Figure 2: Epi-curve for confirmed COVID-19 cases, 06 June 2021**

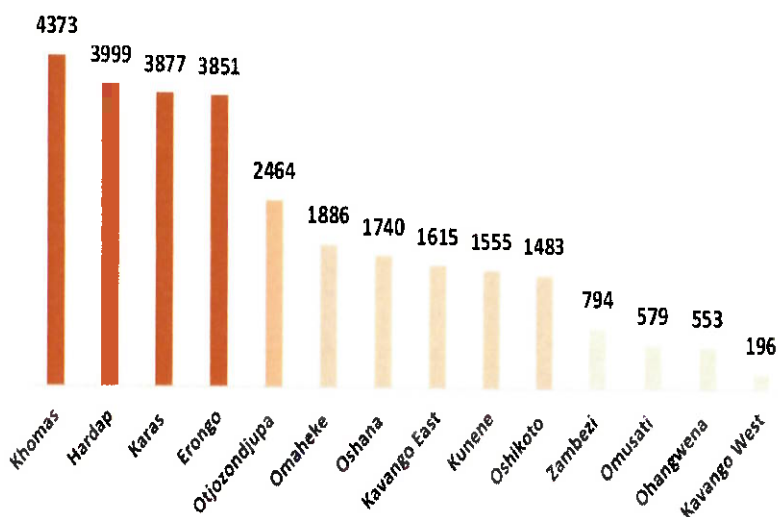


**Table 3: Summary of COVID-19 vaccines administered, as of 06 June 2021**

Region	Cumulative no. of persons vaccinated with doses of Sinopharm and AstraZeneca		Cumulative no. of Healthcare Workers vaccinated with doses of Sinopharm and AstraZeneca	
	1 <sup>st</sup> Dose	2 <sup>nd</sup> Dose	1 <sup>st</sup> Dose	2 <sup>nd</sup> Dose
Erongo	8 148	1 097	494	145
Hardap	3 148	490	276	51
//Kharas	2 989	394	428	102
Kavango East	5 076	896	558	97
Kavango West	2 016	234	223	25
Khomas	26 401	3 288	1 816	551
Kunene	3 539	888	418	223
Oshana	4 249	783	417	121
Omaheke	3 216	662	253	103
Omusati	4 100	496	586	95
Oshana	3 832	837	723	299
Oshikoto	1 945	379	356	113
Otjozondjupa	6 285	923	467	122
Zambezi	1 315	241	212	54
<b>Total</b>	<b>76 259</b>	<b>11 608</b>	<b>7 227</b>	<b>2 101</b>



**Cumulative\_confirmed cases per 100 000 people**



**Figure 3: Distribution of cumulative confirmed cases per 100 000 by region, 06 June 2021**

**Table 4: COVID-19 specimen recorded at the Laboratories 06 June 2021**

VARIABLES	TOTAL
Total samples received by the Laboratory	446 687
Total samples tested	434 326
Total samples re-tested	12 244
Total positive results	59 092
Total negative results	375 181
Total samples discarded	117
Invalid results	0
Total pending results	46
Indeterminant/Inconclusive	7
Suspected cases in 24 hours (excluding re-tests)	1 142

- To date, **446 570** tests (including **12 244** re-tests) have been conducted by NIP, Path-Care, NAMDEB, UNAM, Namib Poultry, Diagno, NAMPath, Namibia Central Pathology, High Care and Central Veterinary laboratories
- Since the beginning of the outbreak, **98 8874** contacts of confirmed cases have been identified, **85** new contacts were identified within the last 24 hours from 11 regions.
- Cumulatively, **94 649** contacts have completed their monitoring period, while **118** contacts are lost to follow-up and a total of **14 389 (24%)** contacts of confirmed cases have tested positive.
- Today, **799 (23%)** out of **3 454** active contacts were monitored.

**Table 5: Number of people in mandatory quarantine facilities, 06 June 2021**

Region	Newly quarantined 24 hours	Cumulative number	Number discharged	Number in quarantine now
Erongo	0	5 683	5 608	75
Hardap	3	1 969	1 913	56
Kavango (East and West)	33	1 486	1 441	45
Khomas	0	3 507	3 478	29
//Kharas	0	6 715	6 320	395
Kunene	0	5 192	5 130	62
Oshana	0	695	695	0
Omaheke	58	7 782	7 489	293
Omusati	1	949	840	109
Oshana	0	400	400	0
Oshikoto	0	13 572	13 234	338
Otjozondjupa	0	1 540	1 540	0
Zambezi	0	1 791	1 624	167
<b>Total</b>	<b>95</b>	<b>51 281</b>	<b>49 712</b>	<b>1 569</b>

- Since March 2020, **51 281** people have been placed into mandatory quarantine facilities around the country.
- A total of **1 569** people are currently in quarantine, with **95** new admissions.

### PUBLIC HEALTH ACTION (S)

- The COVID-19 vaccination programme is ongoing throughout the country
- The government and development partners continue to prioritize the continuation of essential health services.

### CHALLENGES

- Slow vaccine uptake among members of the public, and circulation of anti-vaccination information.
- Non-adherence to COVID-19 Infection Prevention and Control (IPC) measures by the general public.

### RECOMMENDATIONS

- Encourage the public to get vaccinated, and strengthen community health awareness to counter anti-vaccination information in circulation.
- Continue to give awareness on the importance of adhering to COVID-19 IPC measures; with the involvement of the Security Cluster.




APPROVED



INCIDENT MANAGER  
06 June 2021



SECRETARIAT

For enquiries, please contact  
**Namibia Public Health Emergency Operations Centre;**  
 [PHEOC@mhss.gov.na](mailto:PHEOC@mhss.gov.na)  
 0800 100 100  
 0851 100 100