



NAMIBIA COVID-19 SITUATION REPORT NO. 409

Outbreak Name	COVID-19 outbreak	Country affected	Namibia
Date & Time	01.05.2021 17h00	Investigation start Date	13 March 2020
Prepared by	Surveillance Team		

HIGHLIGHTS/SITUATION UPDATE (01/05/2021)

CUMULATIVE

Tested 388216

Confirmed 48999

Active 1837

Recoveries 46499

Deaths 652

TOTAL TODAY

Tested 1276

Confirmed 97

Active 1837

Recoveries 78

Deaths 3

- A total of **48999** cases have been recorded to-date, representing **2%** of the population.
- Cases are equally distributed by gender at **50%**.
- Of the total confirmed cases, **2106 (4%)** are Health Workers.
 - 1658 (79%) State; 444 (21%) Private, 4 (0.2%) Non-Governmental Organizations.
 - 2005 (95%) recoveries and 6 (0.3%) deaths.
- The recovery rate now stands at **95%**.
- All fourteen (14) regions have reported confirmed cases; **Khomas and Erongo** regions reported the highest with **17341 (35%)** and **8677 (18%)** respectively.
- Of the total fatalities, **533 (82%)** are COVID-19 deaths while **119 (18%)** are COVID-19 related deaths.

Table 1: Distribution of confirmed COVID-19 cases by region, 01 May 2021

Region	Total No. of cases	Active cases	Recoveries	Cumulative Deaths	Cumulative deaths with co-morbidities	Non-COVID deaths	Vaccine data	Health Workers
Erongo	8677	219	8327	126	117	5	3201	228
Hardap	2831	196	2590	45	30	0	1397	67
//Kharas	2987	61	2883	43	34	0	975	136
Kavango East	1926	46	1856	24	18	0	1142	116
Kavango West	229	2	225	2	2	0	280	12
Khomas	17341	715	16395	230	2016	1	9412	843
Kunene	1504	63	1426	15	15	0	951	54
Ohangwena	1245	63	1164	16	13	2	1056	62
Omaheke	1083	9	1059	15	11	0	1329	44
Omusati	1297	37	1250	10	7	0	499	34
Oshana	2986	109	2841	35	22	1	1658	226
Oshikoto	2734	82	2631	19	18	2	666	122
Otjozondjupa	3409	216	3132	61	47	0	2076	122
Zambezi	750	19	720	11	8	0	315	40
Total	48999	1837	46499	652	2358	11	24957	2106

EPIDEMIOLOGICAL SITUATION IN NAMIBIA

**Table 2: COVID-19 specimen recorded at the Laboratories
01 May 2021**

VARIABLES	TOTAL
Total samples received by the Laboratory	388333
Total samples tested	376284
Total samples re-tested	11932
Total positive results	48999
Total negative results	327232
Total samples discarded	117
Invalid results	0
Total pending results	46
Indeterminant/Inconclusive	7
Suspected cases in 24 hours (excluding re-tests)	1275

- To date, **388216** tests (including **11932** re-tests) have been conducted by NIP, Path-Care, NAMDEB, UNAM, Namib Poultry, Diagno, NAMPath, Namibia Central Pathology, Highcare and Central Veterinary laboratories
- Since the beginning of the outbreak, **88678** contacts of confirmed cases have been identified, **48** new contacts were identified within the last 24 hours from 5 regions.
- Cumulatively, **83835** contacts have completed their monitoring period, while a total of **12317 (25%)** contacts of confirmed cases have tested positive.
- Today, **57 (1%)** out of **4070** active contacts monitored.

- The highest peaks of **3463 (7%)** and **3485 (7%)** cases were recorded during week 53 of 2020 and 1 of 2021 respectively (Figure 1).

- The National Call Center continues operations for 24 hours daily.
- Today (01/05/2021), **457** calls were answered including **21** alerts.

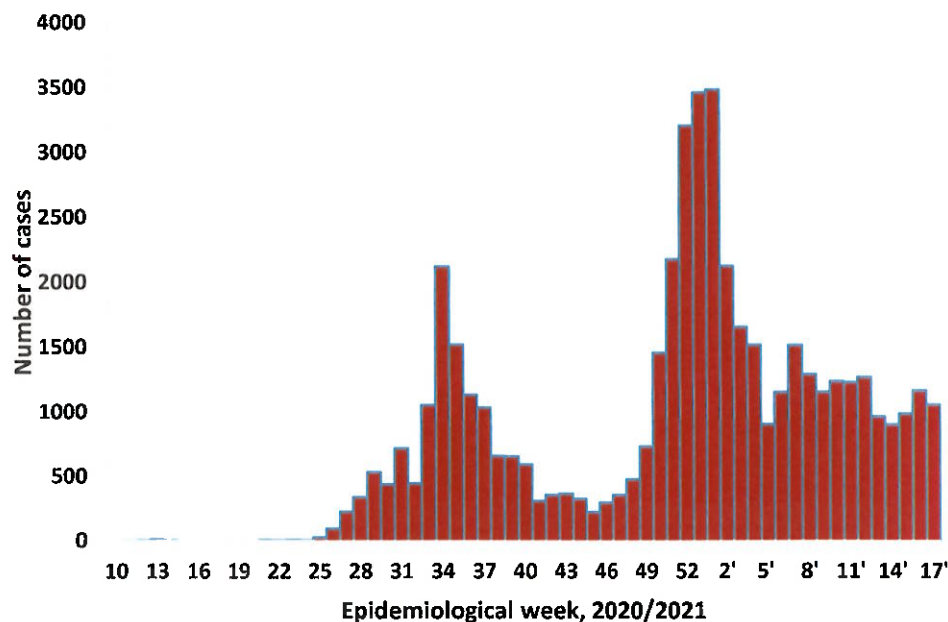


Figure 1: Epi-curve for confirmed COVID-19 cases, 01 May 2021

Table 3: Number of people in mandatory quarantine facilities, 01 May 2021

Region	Newly quarantined 24 Hrs.	Cumulative number	Number discharged	Number in quarantine now
Erongo	0	5382	5351	31
Hardap	76	1726	1657	69
Kavango	0	1335	1327	8
Khomas	0	3435	3420	15
//Kharas	7	5814	5770	44
Kunene	0	4760	4628	132
Ohangwena	0	692	692	0
Omaheke	92	6041	5734	307
Omusati	0	566	565	1
Oshana	0	400	400	0
Oshikoto	0	12028	11346	682
Otjozondjupa	0	1476	1453	23
Zambezi	0	1791	1624	167
Total	175	45446	43967	1479

- Since March 2020, **45446** people have been placed into mandatory quarantine facilities around the country.
- A total of **1479** people are currently in quarantine, with **175** new admissions.

- Of the total confirmed cases, **30784 (63%)** are in the 20-49 years age-brackets which constitutes the majority of the recorded cases.
- A total of **8693 (18%)** of the confirmed cases are among the 5-19 years category.
- The under 5 years age group make up **1112 (2%)** of the total cases whereas, **3244 (7%)** are above 60 years of age.

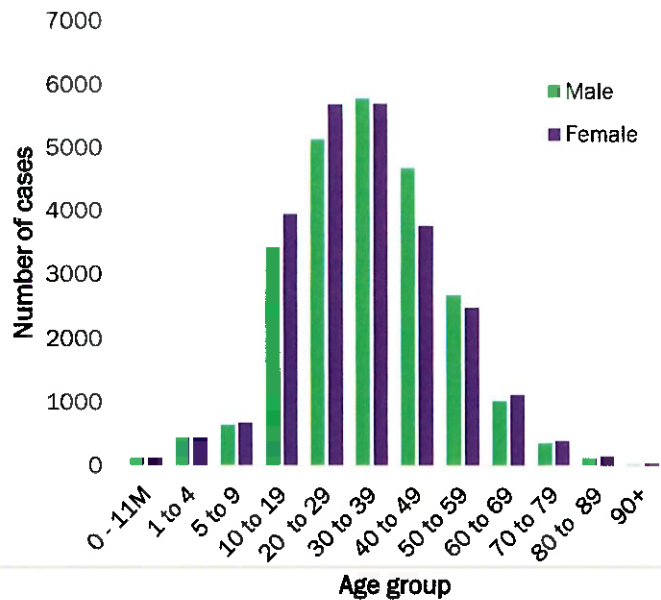
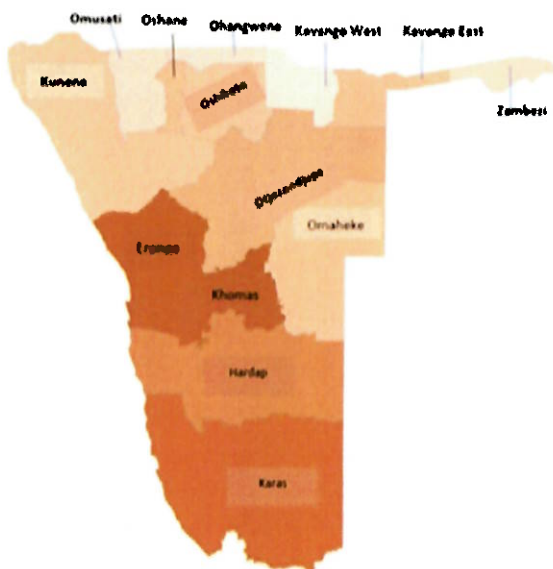


Figure 2: Age and Sex distribution of COVID-19 confirmed cases 01 May 2021



Cumulative_confirmed cases per 100 000 people

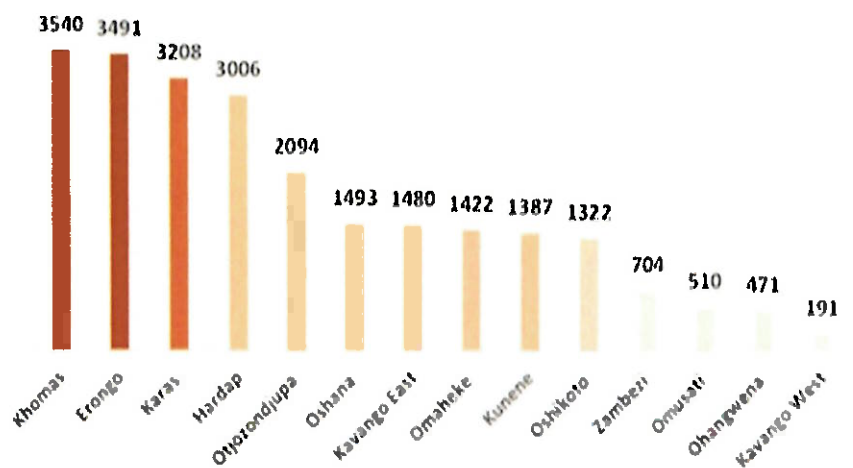


Figure 3: Distribution of cumulative confirmed cases per 100 000 by region, 01 May 2021

PUBLIC HEALTH ACTION (S)

- The COVID-19 vaccination programme has been extended to other regions and is ongoing.
- The government and developmental partners continue to prioritize the continuation of essential health services.

CHALLENGES

- Lack of isolation units and facilities for cases detected in boarding schools and police holding cells.
- Non-adherence to COVID-19 prevention measures by the general public.

RECOMMENDATIONS

- Establish fully equipped isolation units and facilities for cases detected in schools and police holding cells.
- Continue to give awareness on the importance of adhering to COVID -19 prevention measures; with the involvement of the Security Cluster.

APPROVED

INCIDENT MANAGER
01 MAY 2021

SECRETARIAT

For enquiries, please contact
Namibia Public Health Emergency Operations Centre;
 @ PHEOC@mhss.gov.na
 ☎ 0800 100 100
 📞 0851 100 100