



NAMIBIA COVID-19 SITUATION REPORT NO. 412

Outbreak Name	COVID-19 outbreak	Country affected	Namibia
Date & Time	04.05.2021 17h00	Investigation start Date	13 March 2020
Prepared by	Surveillance Team		

HIGHLIGHTS/SITUATION UPDATE (04/05/2021)

CUMULATIVE

Tested 391276

Confirmed 49323

Active 1962

Recoveries 46683

Deaths 667

TOTAL TODAY

Tested 1275

Confirmed 120

Active 1962

Recoveries 30

Deaths 4

- A total of **49323** cases have been recorded to-date, representing **2%** of the population.
- Cases are equally distributed by gender at **50%**.
- Of the total confirmed cases, **2121 (4%)** are Health Workers.
 - 1667 (79%) State; 450 (21%) Private, 4 (0.2%) Non-Governmental Organizations.
 - 2064 (97%) recoveries and 6 (0.3%) deaths.
- The recovery rate now stands at **95%**.
- All fourteen (14) regions have reported confirmed cases; *Khomas and Erongo* regions reported the highest with **17500 (36%)** and **8692 (18%)** respectively.
- Of the total fatalities, **544 (82%)** are COVID-19 deaths while **123 (18%)** are COVID-19 related deaths.

Table 1: Distribution of confirmed COVID-19 cases by region, 04 May 2021

Region	Total No. of cases	Active cases	Recoveries	Cumulative Deaths	Cumulative deaths with co-morbidities	Non-COVID deaths	Vaccine data	Health Workers
Erongo	8692	231	8327	129	120	5	3450	228
Hardap	2858	182	2630	46	31	0	1534	68
//Kharas	3004	67	2894	43	34	0	1043	136
Kavango East	1926	46	1856	24	18	0	1392	116
Kavango West	229	2	225	2	2	0	380	12
Khomas	17500	748	16514	237	212	1	11123	852
Kunene	1509	64	1430	15	15	0	1127	54
Ohangwena	1254	72	1164	16	13	2	1056	62
Omaheke	1100	26	1059	15	11	0	1329	44
Omusati	1302	32	1259	11	8	0	499	34
Oshana	3009	132	2841	35	22	1	1658	228
Oshikoto	2748	96	2631	19	18	2	666	123
Otjozondjupa	3442	247	3132	63	49	0	2076	124
Zambezi	750	17	721	12	9	0	315	40
Total	49323	1962	46683	667	562	11	27648	2121

- Of the total confirmed cases, **30981 (63%)** are in the 20-49 years age-brackets which constitutes the majority of the recorded cases.
- A total of **8735 (18%)** of the confirmed cases are among the 5-19 years category.
- The under 5 years age group make up **1117 (2%)** of the total cases whereas, **3287 (7%)** are above 60 years of age.

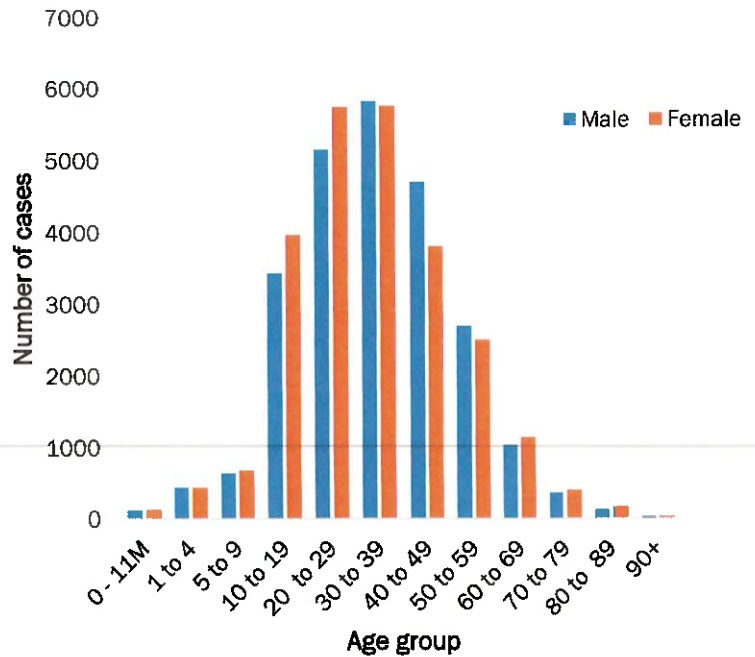
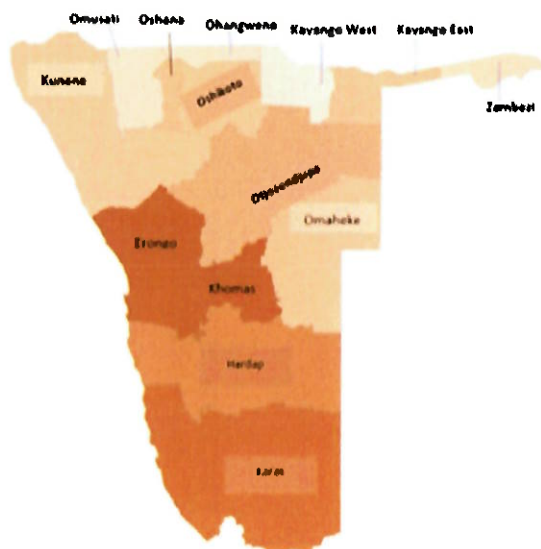


Figure 1: Age and Sex distribution of COVID-19 confirmed cases 04 May 2021

Table 2: COVID-19 specimen recorded at the Laboratories 04 May 2021

VARIABLES	TOTAL
Total samples received by the Laboratory	391393
Total samples tested	379333
Total samples re-tested	11943
Total positive results	49323
Total negative results	329957
Total samples discarded	117
Invalid results	0
Total pending results	46
Indeterminant/Inconclusive	7
Suspected cases in 24 hours (excluding re-tests)	1274

- To date, **391276** tests (including **11943** re-tests) have been conducted by NIP, Path-Care, NAMDEB, UNAM, Namib Poultry, Diagno, NAMPath, Namibia Central Pathology, Highcare and Central Veterinary laboratories
- Since the beginning of the outbreak, **89388** contacts of confirmed cases have been identified, **159** new contacts were identified within the last 24 hours from 12 regions.
- Cumulatively, **85363** contacts have completed their monitoring period, while a total of **12503 (25%)** contacts of confirmed cases have tested positive.
- Today, **1990 (58%)** out of **3453** active contacts monitored.



Cumulative_ confirmed cases per 100 000 people

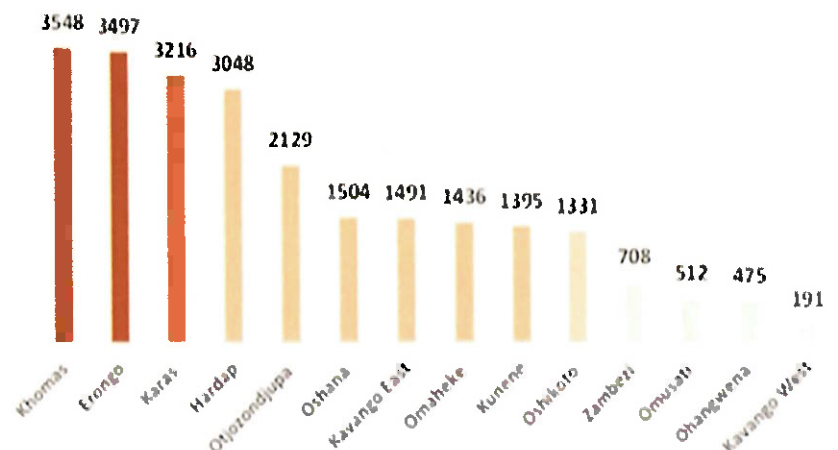


Figure 2: Distribution of cumulative confirmed cases per 100 000 by region, 04 May 2021

➤ The highest peaks of **3463 (7%)** and **3485 (7%)** cases were recorded during week 53 of 2020 and 1 of 2021 respectively (Figure 3).

➤ The National Call Center continues operations for 24 hours daily.

➤ Today (04/05/2021), **592** calls were answered including **27** alerts.

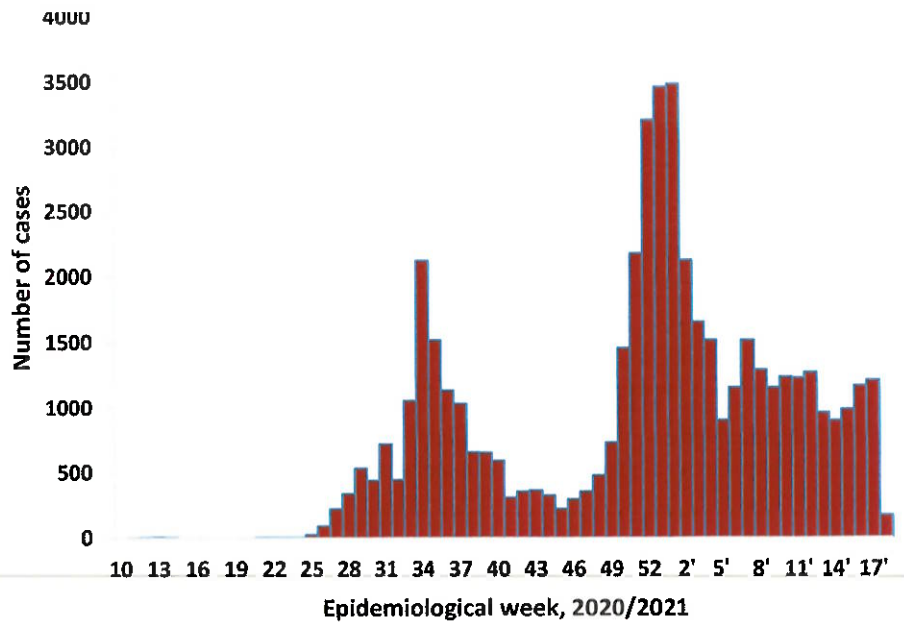


Figure 3: Epi-curve for confirmed COVID-19 cases, 04 May 2021

Table 3: Number of people in mandatory quarantine facilities, 04 May 2021

Region	Newly quarantined 24 Hrs.	Cumulative number	Number discharged	Number in quarantine now
Erongo	0	5382	5382	0
Hardap	0	1730	1659	71
Kavango	6	1343	1334	9
Khomas	1	3436	3425	11
//Kharas	74	5888	5782	106
Kunene	1	4761	4629	132
Ohangwena	0	692	692	0
Omaheke	30	6132	5936	196
Omusati	0	566	566	0
Oshana	0	400	400	0
Oshikoto	40	12068	11357	711
Otjozondjupa	0	1476	1453	23
Zambezi	0	1791	1624	167
Total	152	45665	44239	1426

➤ Since March 2020, **45665** people have been placed into mandatory quarantine facilities around the country.

➤ A total of **1426** people are currently in quarantine, with **152** new admissions.

PUBLIC HEALTH ACTION (S)

- The COVID-19 vaccination programme has been extended to other regions and is ongoing.
- The government and developmental partners continue to prioritize the continuation of essential health services.

CHALLENGES

- Lack of isolation units and facilities for cases detected in boarding schools and police holding cells.

RECOMMENDATIONS

- Establish fully equipped isolation units and facilities for cases detected in schools and police holding cells.

APPROVED

INCIDENT MANAGER
04 MAY 2021

SECRETARIAT

For enquiries, please contact
Namibia Public Health Emergency Operations Centre;

PHEOC@mhss.gov.na

0800 100 100

0851 100 100