



NAMIBIA COVID-19 SITUATION REPORT NO. 414

Outbreak Name	COVID-19 outbreak	Country affected	Namibia
Date & Time	06.05.2021 17h00	Investigation start Date	13 March 2020
Prepared by	Surveillance Team		

HIGHLIGHTS/SITUATION UPDATE (06/05/2021)

CUMULATIVE	TOTAL TODAY
Tested 393793	Tested 1267
Confirmed 49552	Confirmed 92
Active 1713	Active 1713
Recoveries 47146	Recoveries 224
Deaths 682	Deaths 8

- A total of **49552** cases have been recorded to-date, representing **2%** of the population.
- Cases are equally distributed by gender at **50%**.
- Of the total confirmed cases, **2137 (4%)** are Health Workers.
 - 1679 (79%) State; 454 (21%) Private, 4 (0.2%) Non-Governmental Organizations.
 - 2064 (97%) recoveries and 6 (0.3%) deaths.
- The recovery rate now stands at **95%**.
- All fourteen (14) regions have reported confirmed cases; **Khomas** and **Erongo** regions reported the highest with **17595 (35%)** and **8729 (18%)** respectively.
- Of the total fatalities, **562 (82%)** are COVID-19 deaths while **123 (18%)** are COVID-19 related deaths.

Table 1: Distribution of confirmed COVID-19 cases by region, 06 May 2021

Region	Total No. of cases	Active cases	Recoveries	Cumulative Deaths	Cumulative deaths with co-morbidities	Non-COVID deaths	Vaccine data	Health Workers
Erongo	8729	175	8415	134	124	5	3949	228
Hardap	2883	165	2671	47	32	0	1758	70
//Kharas	3040	78	2919	43	34	0	1294	136
Kavango East	1928	28	1876	24	18	0	3157	116
Kavango West	230	2	226	2	2	0	930	12
Khomas	17595	765	16587	242	217	1	12397	865
Kunene	1514	20	1479	15	15	0	1653	55
Ohangwena	1254	71	1164	17	13	2	1056	62
Omaheke	1105	30	1060	15	11	0	1329	44
Omusati	1302	32	1259	11	8	0	1576	34
Oshana	3012	72	2904	35	22	1	1658	228
Oshikoto	2760	107	2631	20	18	2	666	123
Otjozondjupa	3448	150	3234	64	49	0	2668	124
Zambezi	752	18	721	13	9	0	315	40
Total	49552	1713	47146	682	572	11	34406	2137

- The highest peaks of **3463 (7%)** and **3485 (7%)** cases were recorded during week 53 of 2020 and 1 of 2021 respectively (Figure 3).

- The National Call Center continues operations for 24 hours daily.

- Today (06/05/2021), **544** calls were answered including **26** alerts.

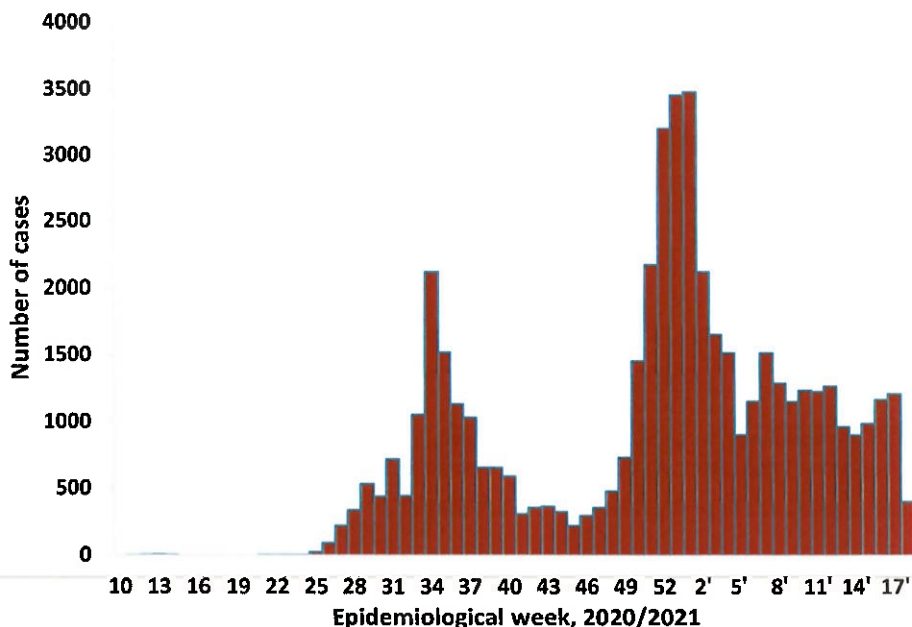


Figure 3: Epi-curve for confirmed COVID-19 cases, 06 May 2021

Table 3: Number of people in mandatory quarantine facilities, 06 May 2021

Region	Newly quarantined 24 Hrs.	Cumulative number	Number discharged	Number in quarantine now
Erongo	0	5382	5382	0
Hardap	0	1730	1659	71
Kavango	16	1372	1347	25
Khomas	2	3438	3429	9
//Kharas	59	5947	5834	113
Kunene	0	4767	4685	82
Ohangwena	0	692	692	0
Omaheke	51	6221	6035	186
Omusati	3	569	566	3
Oshana	0	400	400	0
Oshikoto	74	12199	11570	629
Otjozondjupa	0	1476	1453	23
Zambezi	0	1791	1624	167
Total	205	45984	44676	1308

- Since March 2020, **45984** people have been placed into mandatory quarantine facilities around the country.
- A total of **1308** people are currently in quarantine, with **205** new admissions.

PUBLIC HEALTH ACTION (S)

- The COVID-19 vaccination programme has been extended to other regions and is ongoing.
- The government and developmental partners continue to prioritize the continuation of essential health services.

CHALLENGES

- Lack of isolation units and facilities for cases detected in boarding schools and police holding cells.

RECOMMENDATIONS

- Establish fully equipped isolation units and facilities for cases detected in schools and police holding cells.

APPROVED

INCIDENT MANAGER

06 MAY 2021

SECRETARIAT

For enquiries, please contact

Namibia Public Health Emergency Operations Centre;

PHEOC@mhss.gov.na

0800 100 100

0851 100 100