



NAMIBIA COVID-19 SITUATION REPORT NO. 416

Outbreak Name	COVID-19 outbreak	Country affected	Namibia
Date & Time	08.05.2021 17h00	Investigation start Date	13 March 2020
Prepared by	Surveillance Team		

HIGHLIGHTS/SITUATION UPDATE (08/05/2021)

CUMULATIVE

Tested 397224

Confirmed 50070

Active 2070

Recoveries 47300

Deaths 689

TOTAL TODAY

Tested 1132

Confirmed 177

Active 2070

Recoveries 127

Deaths 6

- A total of **50070** cases have been recorded to-date, representing **2%** of the population.
- Cases are equally distributed by gender at **50%**.
- Of the total confirmed cases, **2160 (4%)** are Health Workers.
 - 1697 (79%) State; 459 (21%) Private, 4 (0.2%) Non-Governmental Organizations.
 - 2064 (96%) recoveries and 6 (0.3%) deaths.
- The recovery rate now stands at **94%**.
- All fourteen (14) regions have reported confirmed cases; **Khomas and Erongo** regions reported the highest with **17758 (35%)** and **8782 (18%)** respectively.
- Of the total fatalities, **565 (82%)** are COVID-19 deaths while **124 (18%)** are COVID-19 related deaths.

Table 1: Distribution of confirmed COVID-19 cases by region, 08 May 2021

Region	Total No. of cases	Active cases	Recoveries	Cumulative Deaths	Cumulative deaths with co-morbidities	Non-COVID deaths	Vaccine data	Health Workers
Erongo	8782	146	8497	134	124	5	4109	228
Hardap	2928	181	2900	47	32	0	1760	70
//Kharas	3074	105	2925	44	35	0	1431	138
Kavango East	1944	44	1876	24	18	0	2993	118
Kavango West	230	2	226	2	2	0	842	12
Khomas	17758	912	16598	247	220	1	12738	875
Kunene	1529	25	1489	15	15	0	1792	55
Ohangwena	1277	94	1164	17	13	2	1056	63
Omaheke	1133	54	1064	15	11	0	2857	44
Omusati	1322	52	1259	11	8	0	1984	34
Oshana	3034	94	2904	35	22	1	1949	229
Oshikoto	2779	126	2631	20	18	2	848	123
Otjozondjupa	3511	212	3234	65	50	0	2901	131
Zambezi	769	23	733	13	9	0	559	40
Total	50070	2070	47300	689	577	11	37819	2160

EPIDEMIOLOGICAL SITUATION IN NAMIBIA

- Of the total confirmed cases, **31405 (63%)** are in the 20-49 years age-brackets which constitutes the majority of the recorded cases.
- A total of **8844 (18%)** of the confirmed cases are among the 5-19 years category.
- The under 5 years age group make up **1140 (2%)** of the total cases whereas, **3372 (7%)** are above 60 years of age.

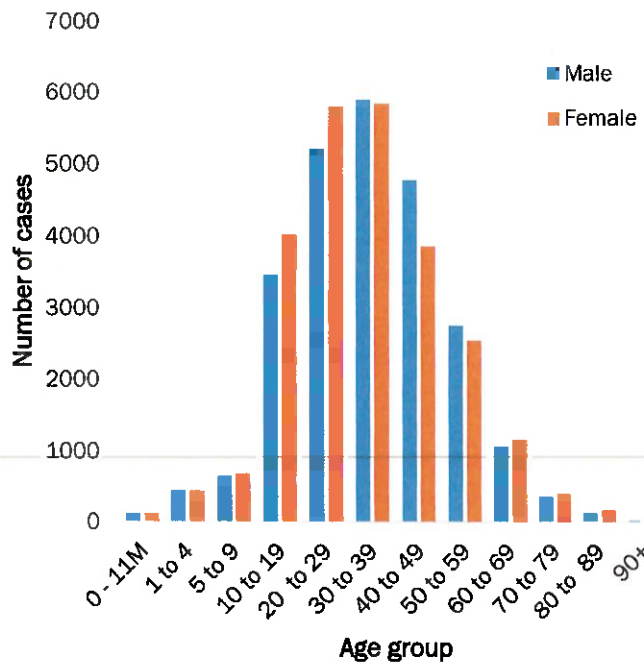


Figure 1: Age and Sex distribution of COVID-19 confirmed cases 08 May 2021

Table 2: COVID-19 specimen recorded at the Laboratories 08 May 2021

VARIABLES	TOTAL
Total samples received by the Laboratory	397341
Total samples tested	385256
Total samples re-tested	11968
Total positive results	50070
Total negative results	335133
Total samples discarded	117
Invalid results	0
Total pending results	46
Indeterminant/Inconclusive	7
Suspected cases in 24 hours (excluding re-tests)	1121

- To date, **397224** tests (including **11968** re-tests) have been conducted by NIP, Path-Care, NAMDEB, UNAM, Namib Poultry, Diagno, NAMPath, Namibia Central Pathology, High Care and Central Veterinary laboratories
- Since the beginning of the outbreak, **90348** contacts of confirmed cases have been identified, **84** new contacts were identified within the last 24 hours from 9 regions.
- Cumulatively, **86351** contacts have completed their monitoring period, while a total of **12567 (25%)** contacts of confirmed cases have tested positive.
- Today, **1687 (50%)** out of **3392** active contacts monitored.

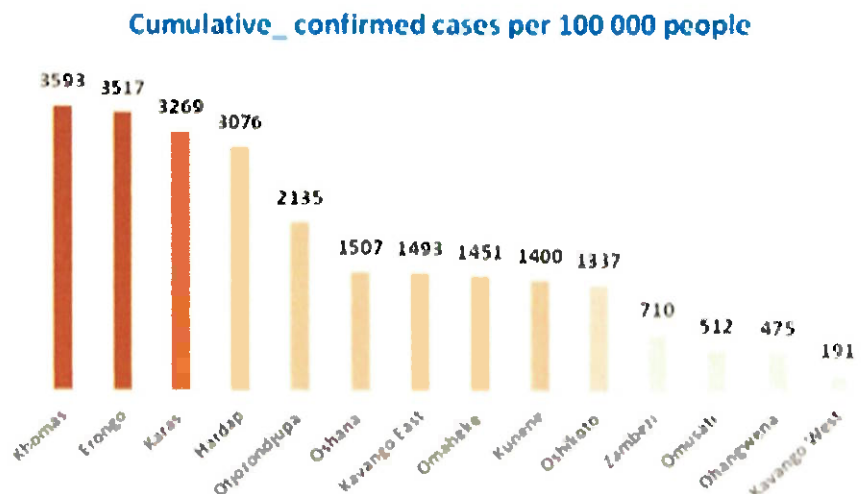
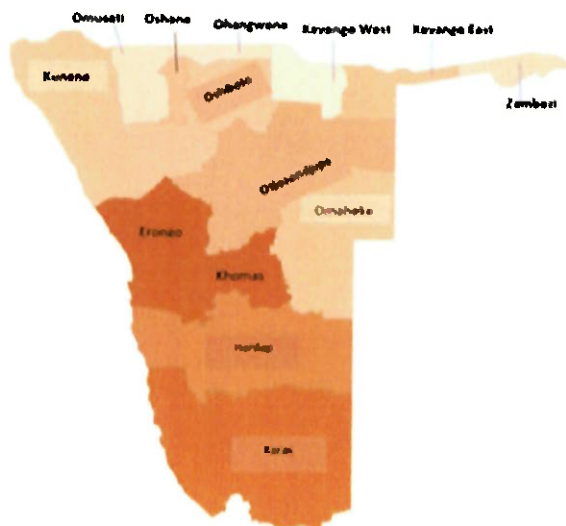


Figure 2: Distribution of cumulative confirmed cases per 100 000 by region, 08 May 2021

➤ The highest peaks of **3463 (7%)** and **3485 (7%)** cases were recorded during week 53 of 2020 and 1 of 2021 respectively (Figure 3).

➤ The National Call Center continues operations for 24 hours daily.

➤ Today (08/05/2021), **537** calls were answered including **18** alerts.

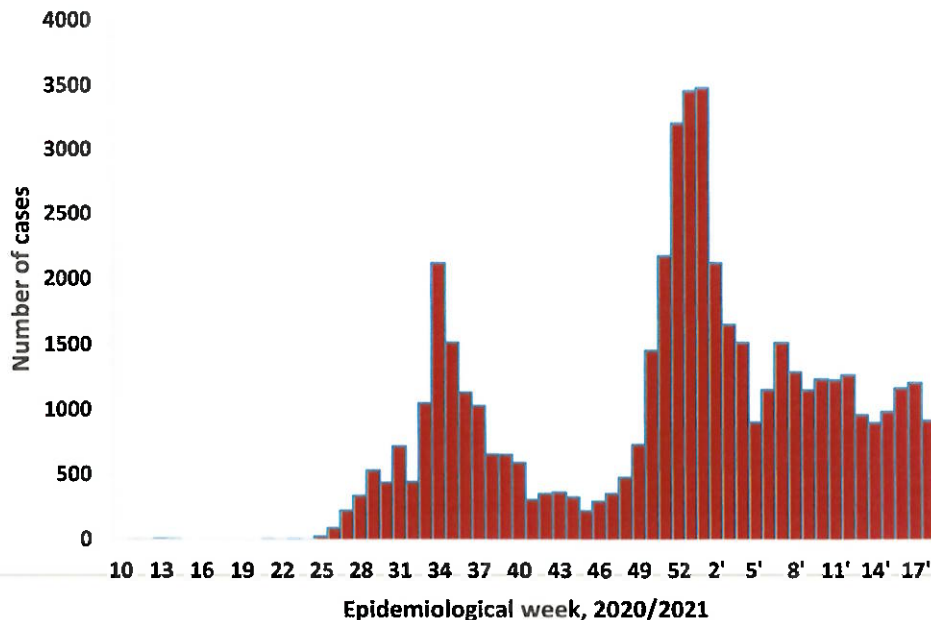


Figure 3: Epi-curve for confirmed COVID-19 cases, 08 May 2021

Table 3: Number of people in mandatory quarantine facilities, 08 May 2021

Region	Newly quarantined 24 hours	Cumulative number	Number discharged	Number in quarantine now
Erongo	0	5382	5382	0
Hardap	0	1761	1711	50
Kavango (East and West)	0	1372	1347	25
Khomas	0	3438	3430	8
//Kharas	3	5950	5839	111
Kunene	0	4767	4685	82
Ohangwena	0	692	692	0
Omaheke	28	6291	6125	166
Omusati	0	569	569	0
Oshana	0	400	400	0
Oshikoto	0	12229	11576	653
Otjozondjupa	0	1476	1453	23
Zambezi	0	1791	1624	167
Total	31	46118	44833	1285

➤ Since March 2020, **46118** people have been placed into mandatory quarantine facilities around the country.

➤ A total of **1285** people are currently in quarantine, with **31** new admissions.

PUBLIC HEALTH ACTION (S)

- The COVID-19 vaccination programme has been extended to other regions and is ongoing.
- The government and developmental partners continue to prioritize the continuation of essential health services.

CHALLENGES

- Lack of isolation units and facilities for cases detected in boarding schools and police holding cells.




RECOMMENDATIONS

- Establish fully equipped isolation units and facilities for cases detected in schools and police holding cells.

APPROVED


 INCIDENT MANAGER
 08 MAY 2021


 SECRETARIAT

For enquiries, please contact
Namibia Public Health Emergency Operations Centre;
 PHEOC@mhss.gov.na
 0800 100 100
 0851 100 100