



NAMIBIA COVID-19 SITUATION REPORT NO. 421

| | | | |
|------------------------|---------------------|---------------------------------|---------------|
| Outbreak Name | COVID-19 outbreak | Country affected | Namibia |
| Date & Time | 13.05.2021 17h00 | Investigation start Date | 13 March 2020 |
| Prepared by | Surveillance Team | | |

HIGHLIGHTS/SITUATION UPDATE (13/05/2021)

CUMULATIVE

Tested 403663

Confirmed 50949

Active 2287

Recoveries 47946

Deaths 705

TOTAL TODAY

Tested 1021

Confirmed 216

Active 2287

Recoveries 170

Deaths 1

- A total of **50949** cases have been recorded to-date, representing **2%** of the population.
- Cases are equally distributed by gender at **50%**.
- Of the total confirmed cases, **2197 (4%)** are Health Workers.
 - 1731 (79%) State; 462 (21%) Private, 4 (0.2%) Non-Governmental Organizations.
 - 2064 (94%) recoveries and 6 (0.3%) deaths.
- The recovery rate now stands at **94%**.
- All fourteen (14) regions have reported confirmed cases; **Khomas** and **Erongo** regions reported the highest with **18112 (36%)** and **8889 (17%)** respectively.
- Of the total fatalities, **579 (82%)** are COVID-19 deaths while **126 (18%)** are COVID-19 related deaths.

Table 1: Distribution of confirmed COVID-19 cases by region, 13 May 2021

| Region | Total No. of cases | Active cases | Recoveries | Cumulative Deaths | Cumulative deaths with co-morbidities | Non-COVID deaths | Vaccine data | Health Workers |
|--------------|--------------------|--------------|--------------|-------------------|---------------------------------------|------------------|---------------|----------------|
| Erongo | 8889 | 152 | 8596 | 136 | 125 | 5 | 5 023 | 231 |
| Hardap | 2999 | 148 | 2804 | 47 | 32 | 0 | 2 251 | 72 |
| //Kharas | 3140 | 129 | 2965 | 46 | 37 | 0 | 1 796 | 138 |
| Kavango East | 1963 | 32 | 1907 | 24 | 18 | 0 | 3 807 | 121 |
| Kavango West | 229 | 0 | 227 | 2 | 2 | 0 | 1 169 | 12 |
| Khomas | 18112 | 1086 | 16773 | 252 | 224 | 1 | 15 591 | 890 |
| Kunene | 1558 | 42 | 1500 | 16 | 16 | 0 | 2 324 | 56 |
| Ohangwena | 1301 | 118 | 1164 | 17 | 13 | 2 | 2 529 | 63 |
| Omaheke | 1152 | 16 | 1120 | 16 | 12 | 0 | 2 936 | 44 |
| Omusati | 1337 | 67 | 1259 | 11 | 8 | 0 | 2 334 | 37 |
| Oshana | 3087 | 146 | 2904 | 36 | 23 | 1 | 2 239 | 236 |
| Oshikoto | 2810 | 46 | 2742 | 20 | 18 | 2 | 1 056 | 124 |
| Otjozondjupa | 3595 | 281 | 3246 | 68 | 53 | 0 | 3 843 | 133 |
| Zambezi | 777 | 24 | 739 | 14 | 10 | 0 | 734 | 40 |
| Total | 50949 | 2287 | 47946 | 705 | 591 | 11 | 47 632 | 2197 |

EPIDEMIOLOGICAL SITUATION IN NAMIBIA

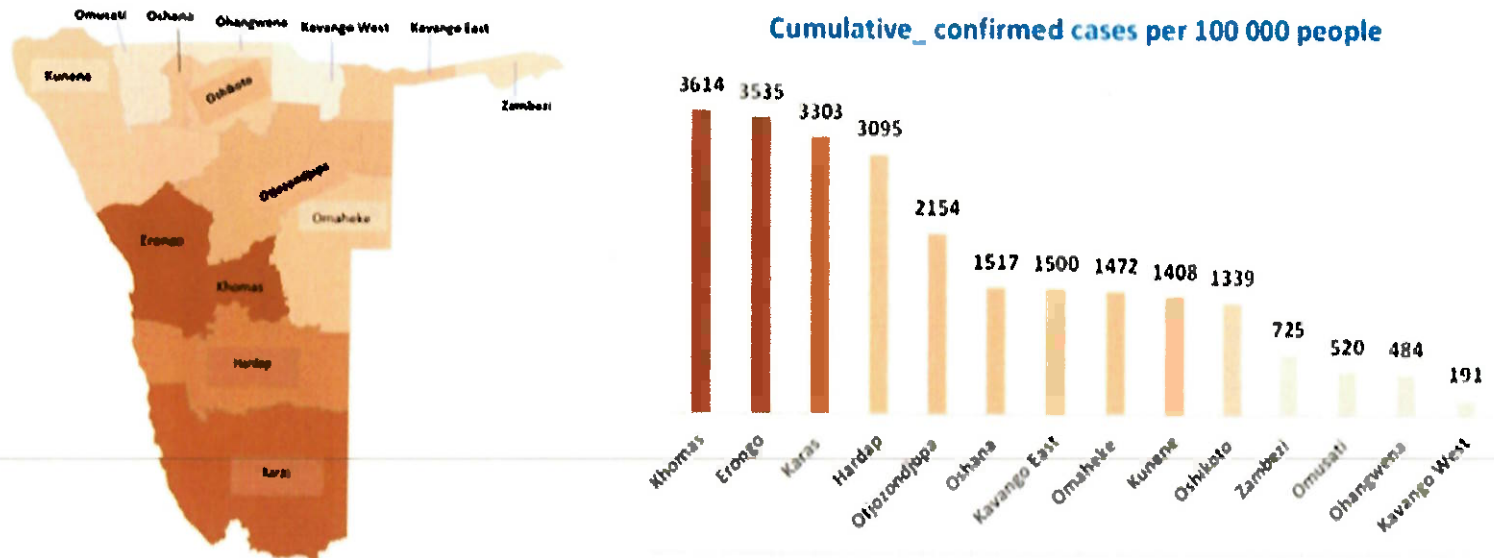


Figure 1: Distribution of cumulative confirmed cases per 100 000 by region, 13 May 2021

Table 2: Number of people in mandatory quarantine facilities, 13 May 2021

| Region | Newly quarantined 24 hours | Cumulative number | Number discharged | Number in quarantine now |
|-------------------------|----------------------------|-------------------|-------------------|--------------------------|
| Erongo | 0 | 5443 | 5401 | 42 |
| Hardap | 23 | 1790 | 1735 | 55 |
| Kavango (East and West) | 5 | 1383 | 1370 | 13 |
| Khomas | 4 | 3463 | 3430 | 33 |
| //Kharas | 18 | 6049 | 5887 | 162 |
| Kunene | 0 | 4906 | 4794 | 112 |
| Ohangwena | 0 | 695 | 695 | 0 |
| Omaheke | 44 | 6459 | 6319 | 140 |
| Omusati | 0 | 569 | 569 | 0 |
| Oshana | 0 | 400 | 400 | 0 |
| Oshikoto | 34 | 12382 | 12063 | 319 |
| Otjozondjupa | 0 | 1517 | 1476 | 41 |
| Zambezi | 0 | 1791 | 1624 | 167 |
| Total | 128 | 46847 | 45763 | 1084 |

Since March 2020, **46847** people have been placed into mandatory quarantine facilities around the country.

A total of **1084** people are currently in quarantine, with **128** new admissions.

➤ The highest peaks of **3463 (7%)** and **3485 (7%)** cases were recorded during week 53 of 2020 and 1 of 2021 respectively (Figure 2).

The National Call Center continues operations for 24 hours daily.

Today (13/05/2021), **592** calls were answered including **10** alerts.

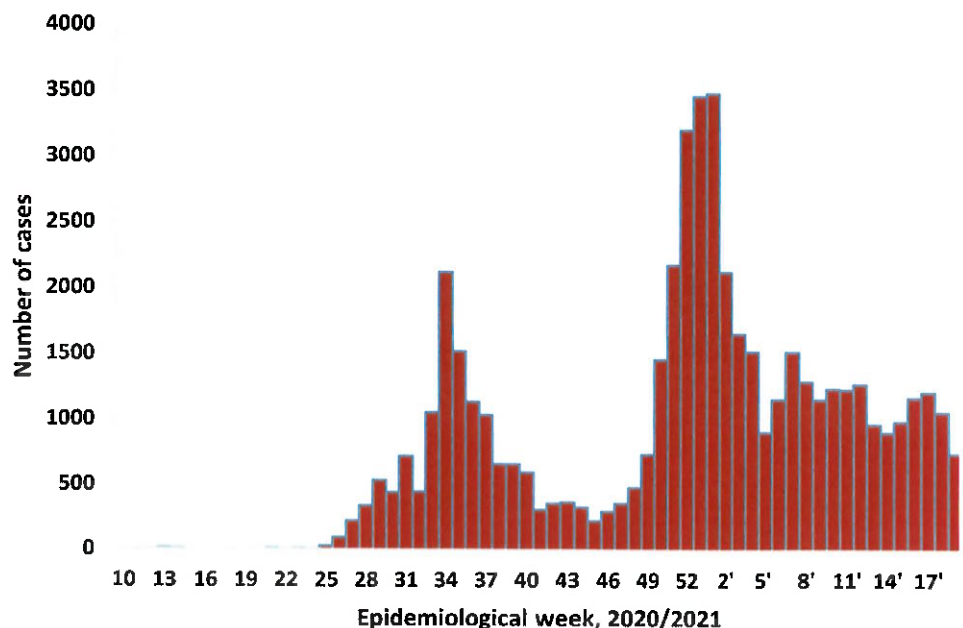


Figure 2: Epi-curve for confirmed COVID-19 cases, 13 May 2021

Table 3: COVID-19 specimen recorded at the Laboratories
13 May 2021

| VARIABLES | TOTAL |
|--|--------|
| Total samples received by the Laboratory | 403780 |
| Total samples tested | 391655 |
| Total samples re-tested | 12008 |
| Total positive results | 50949 |
| Total negative results | 340653 |
| Total samples discarded | 117 |
| Invalid results | 0 |
| Total pending results | 46 |
| Indeterminant/Inconclusive | 7 |
| Suspected cases in 24 hours (excluding re-tests) | 1001 |

- To date, **403663** tests (including **12008** re-tests) have been conducted by NIP, Path-Care, NAMDEB, UNAM, Namib Poultry, Diagno, NAMPath, Namibia Central Pathology, High Care and Central Veterinary laboratories
- Since the beginning of the outbreak, **91727** contacts of confirmed cases have been identified, **141** new contacts were identified within the last 24 hours from 12 regions.
- Cumulatively, **88365** contacts have completed their monitoring period, while a total of **12774 (25%)** contacts of confirmed cases have tested positive.
- Today, **1911 (73%)** out of **2631** active contacts were

- Of the total confirmed cases, **31929 (63%)** are in the 20-49 years age-brackets which constitutes the majority of the recorded cases.
- A total of **8922 (18%)** of the confirmed cases are among the 5-19 years category.
- The under 5 years age group make up **1159 (2%)** of the total cases whereas, **3491 (7%)** are above 60 years of age.

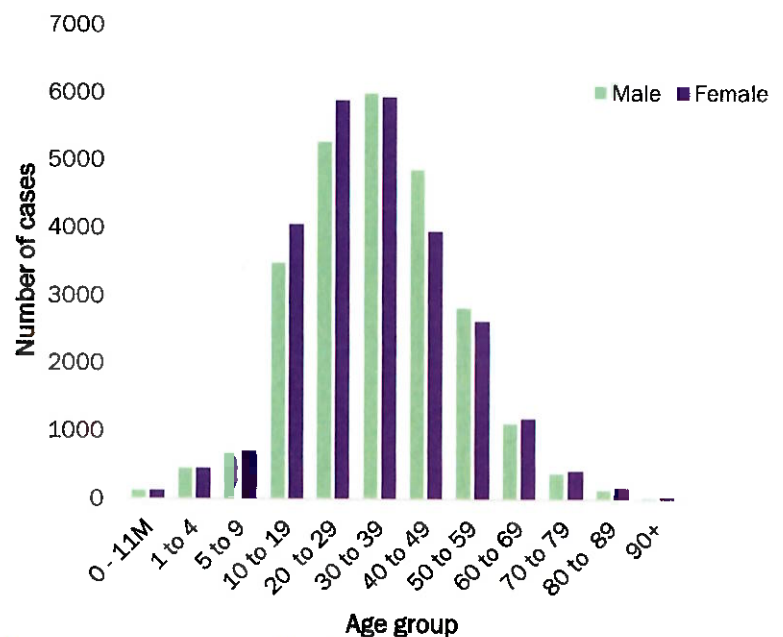


Figure 3: Age and Sex distribution of COVID-19 confirmed cases
13 May 2021

PUBLIC HEALTH ACTION (S)

- The COVID-19 vaccination programme has been extended to all the regions and is ongoing.
- The government and developmental partners continue to prioritize the continuation of essential health services.

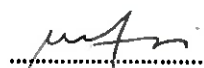
CHALLENGES


- Lack of isolation units and facilities for cases detected in boarding schools and police holding cells.

RECOMMENDATIONS

- Establish fully equipped isolation units and facilities for cases detected in schools and police holding cells.

APPROVED


.....
INCIDENT MANAGER
13 MAY 2021


.....
SECRETARIAT

For enquiries, please contact
Namibia Public Health Emergency Operations Centre;

- @ PHEOC@mhss.gov.na
- ☎ 0800 100 100
- ☎ 0851 100 100