



NAMIBIA COVID-19 SITUATION REPORT NO. 423

Outbreak Name	COVID-19 outbreak	Country affected	Namibia
Date & Time	15.05.2021 17h00	Investigation start Date	13 March 2020
Prepared by	Surveillance Team		

HIGHLIGHTS/SITUATION UPDATE (15/05/2021)

CUMULATIVE

Tested 406461

Confirmed 51218

Active 2242

Recoveries 48247

Deaths 718

TOTAL TODAY

Tested 845

Confirmed 105

Active 2242

Recoveries 198

Deaths 8

- A total of **51218** cases have been recorded to-date, representing **2%** of the population.
- Cases are equally distributed by gender at **50%**.
- Of the total confirmed cases, **2213 (4%)** are Health Workers.
 - 1746 (79%) State; 463 (21%) Private, 4 (0.2%) Non-Governmental Organizations.
 - 2115 (96%) recoveries and 6 (0.3%) deaths.
- The recovery rate now stands at **94%**.
- All fourteen (14) regions have reported confirmed cases; *Khomas* and *Erongo* regions reported the highest with **18207 (36%)** and **8916 (17%)** respectively.
- Of the total fatalities, **591 (82%)** are COVID-19 deaths while **127 (18%)** are COVID-19 related deaths.

Table 1: Distribution of confirmed COVID-19 cases by region, 15 May 2021

Region	Total No. of cases	Active cases	Recoveries	Cumulative Deaths	Cumulative deaths with co-morbidities	Non-COVID deaths	Vaccine data	Health Workers
Erongo	8916	177	8596	138	127	5	5301	232
Hardap	3041	150	2841	50	35	0	2454	72
//Kharas	3153	120	2985	48	39	0	2108	138
Kavango East	1966	35	1907	24	18	0	3807	121
Kavango West	229	0	227	2	2	0	1169	12
Khomas	18207	1105	16843	258	229	1	16815	897
Kunene	1564	35	1513	16	16	0	2324	56
Ohangwena	1313	53	1241	17	13	2	2529	64
Omaheke	1165	9	1140	16	12	0	3029	44
Omusati	1343	73	1259	11	8	0	2436	37
Oshana	3108	167	2904	36	23	1	2358	237
Oshikoto	2812	48	2742	20	18	2	1153	124
Otjozondjupa	3615	245	3302	68	53	0	4083	138
Zambezi	786	25	747	14	10	0	773	41
Total	51218	2242	48247	718	603	11	50339	2213

EPIDEMIOLOGICAL SITUATION IN NAMIBIA

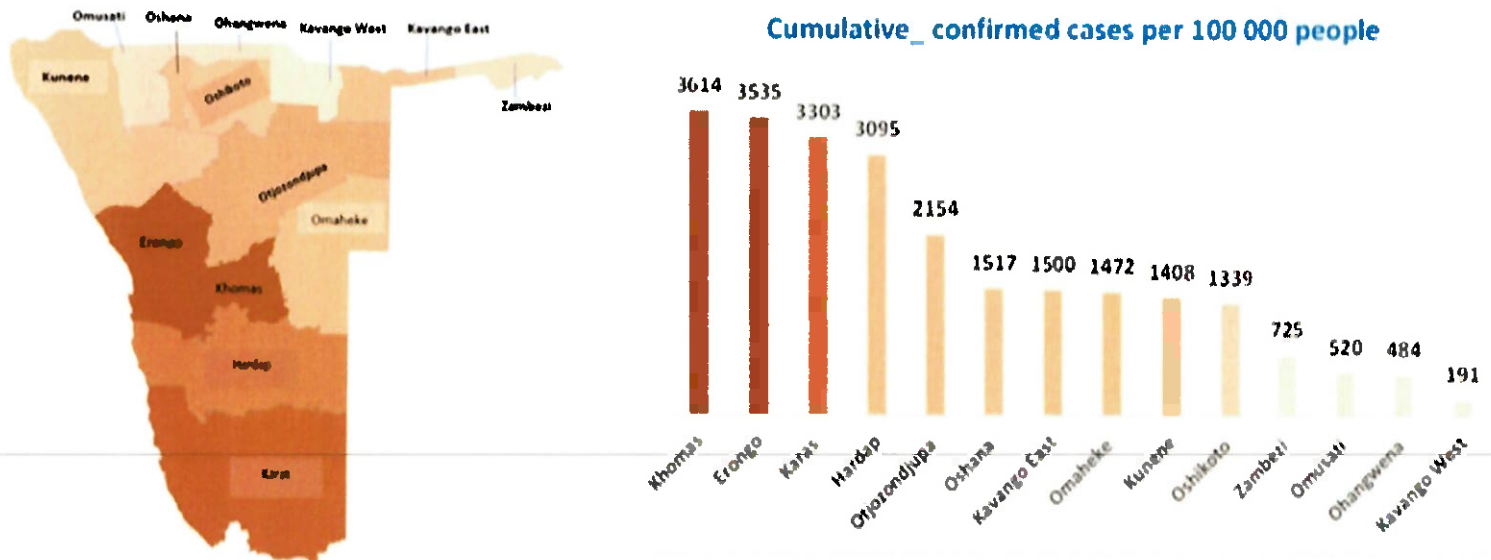


Figure 1: Distribution of cumulative confirmed cases per 100 000 by region, 15 May 2021

Table 2: Number of people in mandatory quarantine facilities, 15 May 2021

Region	Newly quarantined 24 hours	Cumulative number	Number discharged	Number in quarantine now
Erongo	0	5443	5401	42
Hardap	33	1823	1756	67
Kavango (East and West)	0	1383	1370	13
Khomas	0	3463	3445	18
//Kharas	0	6065	5904	161
Kunene	0	4906	4794	112
Ohangwena	0	695	695	0
Omaheke	26	6485	6370	115
Omusati	0	569	569	0
Oshana	0	400	400	0
Oshikoto	0	12382	12063	319
Otjozondjupa	0	1517	1476	41
Zambezi	0	1791	1624	167
Total	59	46922	45867	1055

Since March 2020, **46922** people have been placed into mandatory quarantine facilities around the country.

A total of **1055** people are currently in quarantine, with **59** new admissions.

➤ The highest peaks of **3463 (7%)** and **3485 (7%)** cases were recorded during week 53 of 2020 and 1 of 2021 respectively (Figure 2).

The National Call Center continues operations for 24 hours daily.

Today (15/05/2021), **450** calls were answered including **8** alerts.

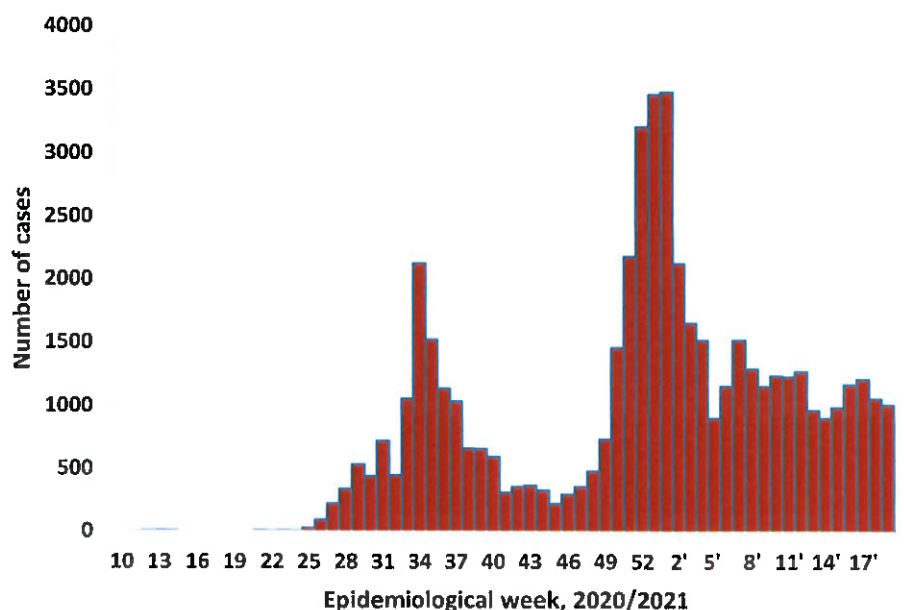


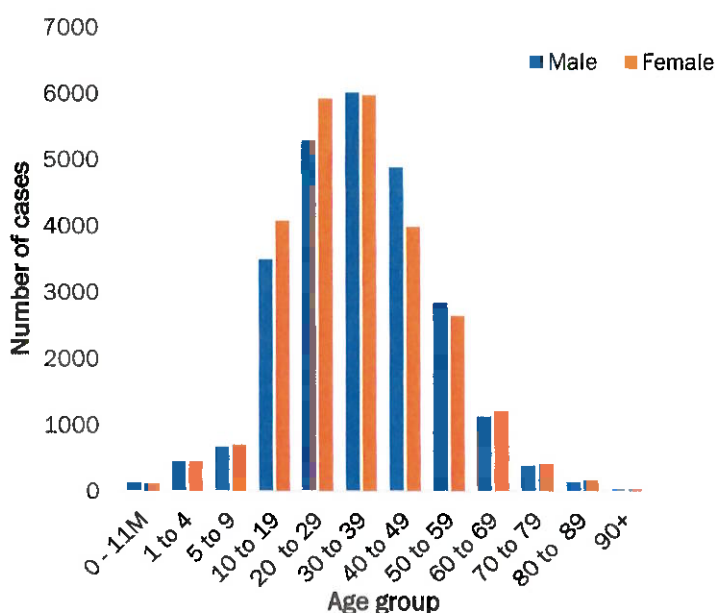
Figure 2: Epi-curve for confirmed COVID-19 cases, 15 May 2021

**Table 3: COVID-19 specimen recorded at the Laboratories
15 May 2021**

VARIABLES	TOTAL
Total samples received by the Laboratory	406578
Total samples tested	394443
Total samples re-tested	12018
Total positive results	51218
Total negative results	343172
Total samples discarded	117
Invalid results	0
Total pending results	46
Indeterminant/Inconclusive	7
Suspected cases in 24 hours (excluding re-tests)	836

- To date, **406461** tests (including **12018** re-tests) have been conducted by NIP, Path-Care, NAMDEB, UNAM, Namib Poultry, Diagno, NAMPath, Namibia Central Pathology, High Care and Central Veterinary laboratories
- Since the beginning of the outbreak, **92168** contacts of confirmed cases have been identified, **112** new contacts were identified within the last 24 hours from 8 regions.
- Cumulatively, **88736** contacts have completed their monitoring period, while a total of **12812 (25%)** contacts of confirmed cases have tested positive.
- Today, **736 (28%)** out of **2676** active contacts were monitored.

- Of the total confirmed cases, **32091 (63%)** are in the 20-49 years age-brackets which constitutes the majority of the recorded cases.
- A total of **8957 (17%)** of the confirmed cases are among the 5-19 years category.
- The under 5 years age group make up **1162 (2%)** of the total cases whereas, **3528 (7%)** are above 60 years of age.



**Figure 3: Age and Sex distribution of COVID-19 confirmed cases
15 May 2021**

PUBLIC HEALTH ACTION (S)

- The COVID-19 vaccination programme has been extended to all the regions and is ongoing.
- The government and developmental partners continue to prioritize the continuation of essential health services.

CHALLENGES

- Lack of isolation units and facilities for cases detected in boarding schools and police holding cells.

RECOMMENDATIONS

- Establish fully equipped isolation units and facilities for cases detected in schools and police holding cells.

APPROVED

INCIDENT MANAGER
15 MAY 2021

SECRETARIAT

For enquiries, please contact
Namibia Public Health Emergency Operations Centre;
PHEOC@mhss.gov.na
 0800 100 100
 0851 100 100