



## NAMIBIA COVID-19 SITUATION REPORT NO. 424

<b>Outbreak Name</b>	COVID-19 outbreak	<b>Country affected</b>	Namibia
<b>Date &amp; Time</b>	16.05.2021 17h00	<b>Investigation start Date</b>	13 March 2020
<b>Prepared by</b>	Surveillance Team		

### HIGHLIGHTS/SITUATION UPDATE (16/05/2021)

#### CUMULATIVE

Tested 408014

Confirmed 51390

Active 2333

Recoveries 48323

Deaths 723

#### TOTAL TODAY

Tested 1553

Confirmed 172

Active 2333

Recoveries 76

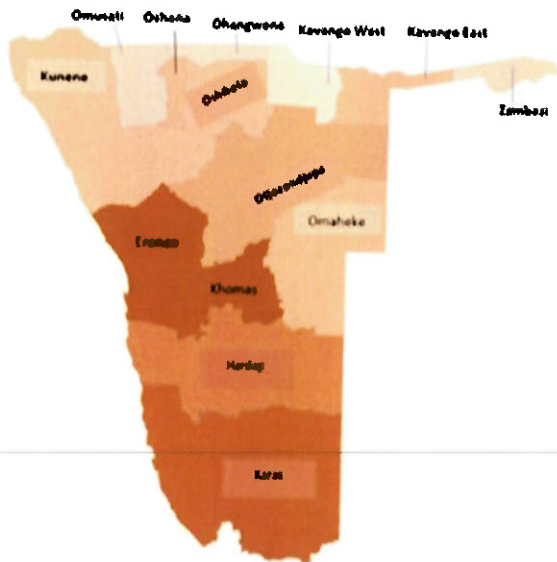
Deaths 5

- A total of **51390** cases have been recorded to-date, representing **2%** of the population.
- Cases are equally distributed by gender at **50%**.
- Of the total confirmed cases, **2222 (4%)** are Health Workers.
  - 1746 (79%) State; 463 (21%) Private, 4 (0.2%) Non-Governmental Organizations.
  - 2115 (96%) recoveries and 6 (0.3%) deaths.
- The recovery rate now stands at **94%**.
- All fourteen (14) regions have reported confirmed cases; *Khomas* and *Erongo* regions reported the highest with **18235 (35%)** and **8940 (17%)** respectively.
- Of the total fatalities, **596 (82%)** are COVID-19 deaths while **127 (18%)** are COVID-19 related deaths.

**Table 1: Distribution of confirmed COVID-19 cases by region, 16 May 2021**

Region	Total No. of cases	Active cases	Recoveries	Cumulative Deaths	Non-COVID deaths	Vaccine data		Health Workers
						1st dose	2nd dose	
Erongo	8940	201	8596	138	5	5301	522	232
Hardap	3076	169	2855	52	0	2454	72	73
//Karas	3161	102	3011	48	0	2108	46	140
Kavango East	1970	39	1907	24	0	3892	78	121
Kavango West	229	0	227	2	0	1347	32	12
Khomas	18235	1110	16866	258	1	16815	1769	898
Kunene	1576	47	1513	16	0	2453	34	56
Ohangwena	1314	54	1241	17	2	2529	120	64
Omaheke	1177	14	1144	19	0	3029	10	45
Omusati	1347	77	1259	11	0	2489	45	37
Oshana	3118	177	2904	36	1	2358	52	238
Oshikoto	2822	58	2742	20	2	1153	103	124
Otjozondjupa	3639	269	3302	68	0	4083	137	141
Zambezi	786	16	756	14	0	773	45	41
<b>Total</b>	<b>51390</b>	<b>2333</b>	<b>48323</b>	<b>723</b>	<b>11</b>	<b>50784</b>	<b>3065</b>	<b>2222</b>

# EPIDEMIOLOGICAL SITUATION IN NAMIBIA



Cumulative\_confirmed cases per 100 000 people

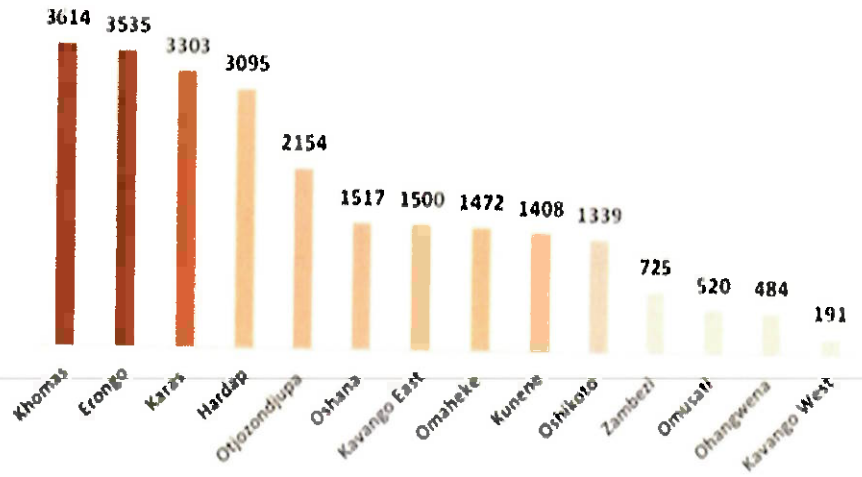


Figure 1: Distribution of cumulative confirmed cases per 100 000 by region, 16 May 2021

Table 2: Number of people in mandatory quarantine facilities, 16 May 2021

Region	Newly quarantined 24 hours	Cumulative number	Number discharged	Number in quarantine now
Erongo	0	5443	5401	42
Hardap	0	1823	1756	67
Kavango (East and West)	5	1388	1375	13
Khomas	0	3463	3446	17
//Kharas	11	6076	5914	162
Kunene	38	4944	4904	40
Ohangwena	0	695	695	0
Omaheke	10	6495	6396	99
Omusati	0	569	569	0
Oshana	0	400	400	0
Oshikoto	0	12382	12063	319
Otjozondjupa	0	1517	1476	41
Zambezi	0	1791	1624	167
<b>Total</b>	<b>64</b>	<b>46986</b>	<b>46019</b>	<b>967</b>

Since March 2020, **46986** people have been placed into mandatory quarantine facilities around the country.

A total of **967** people are currently in quarantine, with **64** new admissions.

➤ The highest peaks of **3463 (7%)** and **3485 (7%)** cases were recorded during week 53 of 2020 and 1 of 2021 respectively (Figure 2).

The National Call Center continues operations for 24 hours daily.

Today (16/05/2021), **475** calls were answered including **5** alerts.

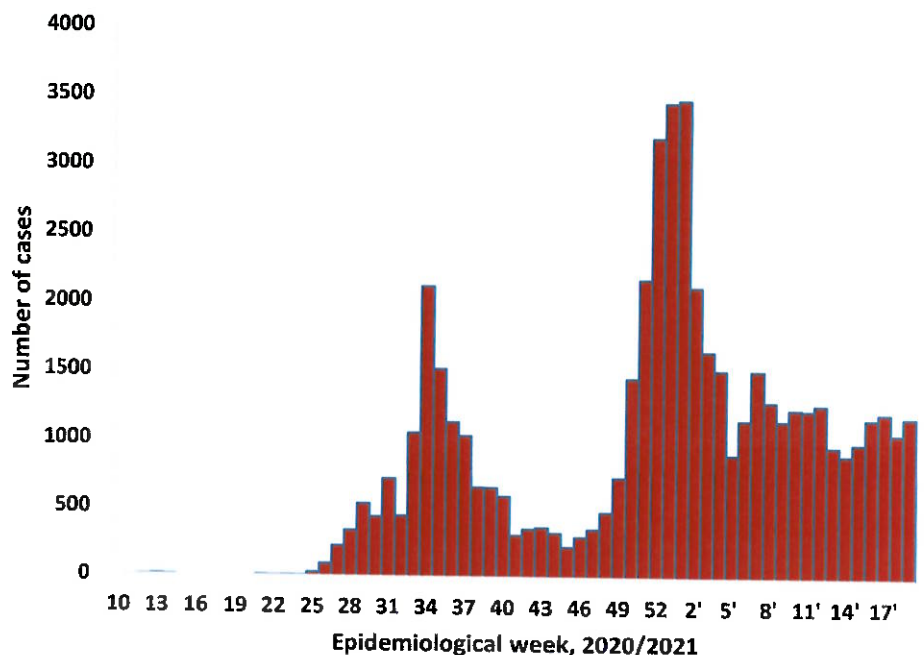


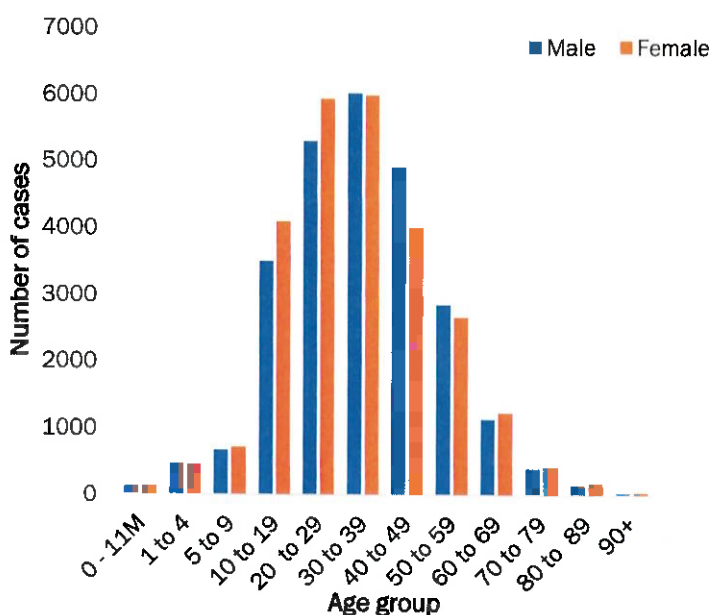
Figure 2: Epi-curve for confirmed COVID-19 cases, 16 May 2021

**Table 3: COVID-19 specimen recorded at the Laboratories**  
16 May 2021

VARIABLES	TOTAL
Total samples received by the Laboratory	408131
Total samples tested	395994
Total samples re-tested	12020
Total positive results	51390
Total negative results	344551
Total samples discarded	117
Invalid results	0
Total pending results	46
Indeterminant/Inconclusive	7
Suspected cases in 24 hours (excluding re-tests)	1551

- To date, **408014** tests (including **12020** re-tests) have been conducted by NIP, Path-Care, NAMDEB, UNAM, Namib Poultry, Diagno, NAMPath, Namibia Central Pathology, High Care and Central Veterinary laboratories
- Since the beginning of the outbreak, **92309** contacts of confirmed cases have been identified, **141** new contacts were identified within the last 24 hours from 14 regions.
- Cumulatively, **88795** contacts have completed their monitoring period, while a total of **13148 (26%)** contacts of confirmed cases have tested positive.
- Today, **390 (14%)** out of **2714** active contacts were monitored.

- Of the total confirmed cases, **32176 (63%)** are in the 20-49 years age-brackets which constitutes the majority of the recorded cases.
- A total of **8977 (17%)** of the confirmed cases are among the 5-19 years category.
- The under 5 years age group make up **1167 (2%)** of the total cases whereas, **3562 (7%)** are above 60 years of age.



**Figure 3: Age and Sex distribution of COVID-19 confirmed cases**  
16 May 2021

**PUBLIC HEALTH ACTION (S)**

- The COVID-19 vaccination programme has been extended to all the regions and is ongoing.
- The government and developmental partners continue to prioritize the continuation of essential health services.

**CHALLENGES**

- Lack of isolation units and facilities for cases detected in boarding schools and police holding cells.

**RECOMMENDATIONS**

- Establish fully equipped isolation units and facilities for cases detected in schools and police holding cells.

APPROVED

INCIDENT MANAGER  
16 MAY 2021

SECRETARIAT

For enquiries, please contact  
**Namibia Public Health Emergency Operations Centre;**

- @ [PHEOC@mhss.gov.na](mailto:PHEOC@mhss.gov.na)
- ☎ 0800 100 100
- ☎ 0851 100 100