



NAMIBIA COVID-19 SITUATION REPORT NO. 427

Outbreak Name	COVID-19 outbreak	Country affected	Namibia
Date & Time	19.05.2021 17h00	Investigation start Date	13 March 2020
Prepared by	Surveillance Team		

HIGHLIGHTS/SITUATION UPDATE (19/05/2021)



- A total of **52122** cases have been recorded to-date, representing **2%** of the population.
- Cases are equally distributed by gender at **50%**.
- Of the total confirmed cases, **2263 (4%)** are Health Workers.
 - 1794 (79%) State; 465 (21%) Private, 4 (0.2%) Non-Governmental Organizations.
 - 2115 (93%) recoveries and 6 (0.3%) deaths.
- The recovery rate now stands at **94%**.
- All fourteen (14) regions have reported confirmed cases; **Khomas and Erongo** regions reported the highest with **18589 (36%)** and **8993 (17%)** respectively.
- Of the total fatalities, **621 (83%)** are COVID-19 deaths while **128 (17%)** are COVID-19 related deaths.

Table 1: Distribution of confirmed COVID-19 cases and Vaccines administered by region, 19 May 2021

Region	Total No. of cases	Active cases	Recoveries	Cumulative Deaths	Non-COVID deaths	Health Workers	Vaccine data	
							1 st dose	2 nd dose
Erongo	8993	205	8641	142	5	234	6076	669
Hardap	3142	197	2893	52	0	75	2778	161
//Kharas	3242	136	3055	51	0	144	2415	124
Kavango East	1987	56	1907	24	0	124	4308	165
Kavango West	229	0	227	2	0	12	1938	56
Khomas	18589	1299	17022	267	1	917	19721	2088
Kunene	1599	66	1517	16	0	56	2846	122
Oshana	1328	48	1261	17	2	65	3151	212
Omaheke	1193	11	1157	25	0	45	3029	98
Omusati	1357	87	1259	11	0	41	3015	75
Oshana	3159	84	3035	39	1	242	2850	326
Oshikoto	2843	78	2742	21	2	125	1378	204
Otjozondjupa	3670	299	3302	69	0	142	4713	242
Zambezi	791	20	757	14	0	41	896	65
Total	52122	2587	48775	749	11	2263	59114	4607

EPIDEMIOLOGICAL SITUATION IN NAMIBIA

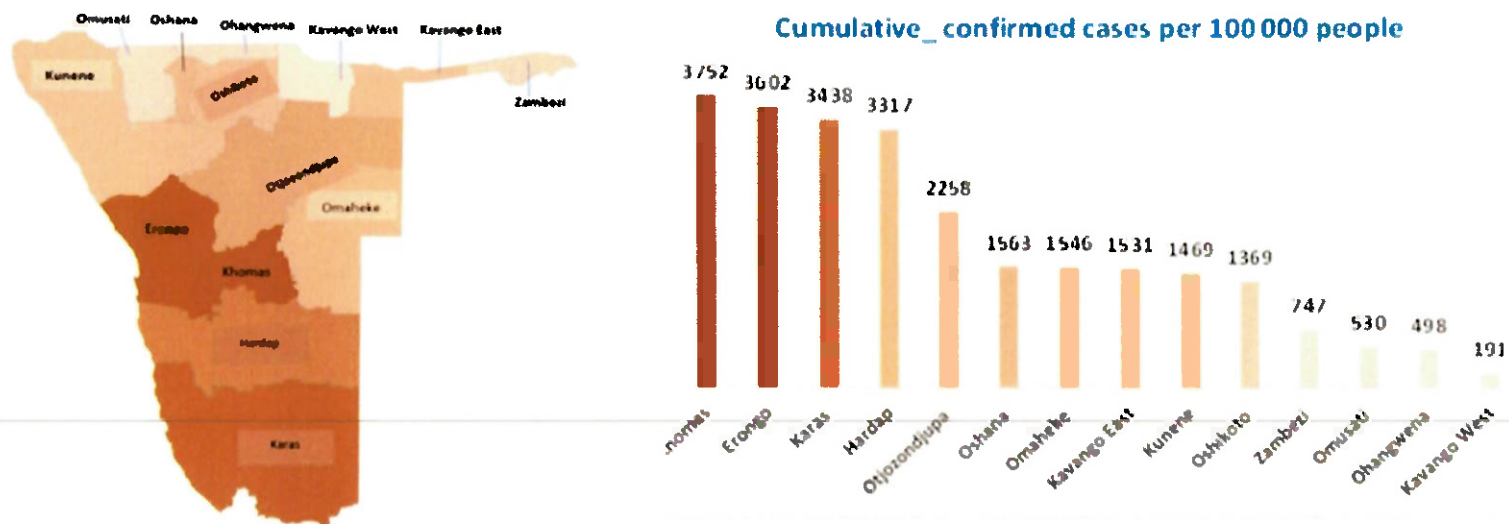


Figure 1: Distribution of cumulative confirmed cases per 100 000 by region, 19 May 2021

Table 2: Number of people in mandatory quarantine facilities, 19 May 2021

Region	Newly quarantined 24 hours	Cumulative number	Number discharged	Number in quarantine now
Erongo	122	5660	5461	199
Hardap	0	1823	1756	67
Kavango (East and West)	5	1396	1383	13
Khomas	19	3482	3462	20
//Kharas	181	6284	6016	268
Kunene	17	4988	4934	54
Ohangwena	0	695	695	0
Omaheke	48	6644	6440	204
Omusati	0	569	569	0
Oshana	0	400	400	0
Oshikoto	50	12649	12335	314
Otjozondjupa	0	1540	1476	64
Zambezi	0	1791	1624	167
Total	442	47921	46551	1370

Since March 2020, **47921** people have been placed into mandatory quarantine facilities around the country.

A total of **1370** people are currently in quarantine, with **442** new admissions.

➤ The highest peaks of **3463 (7%)** and **3485 (7%)** cases were recorded during week 53 of 2020 and 1 of 2021 respectively (Figure 2).

The National Call Center continues operations for 24 hours daily.

Today (19/05/2021), **595** calls were answered including **10** alerts.

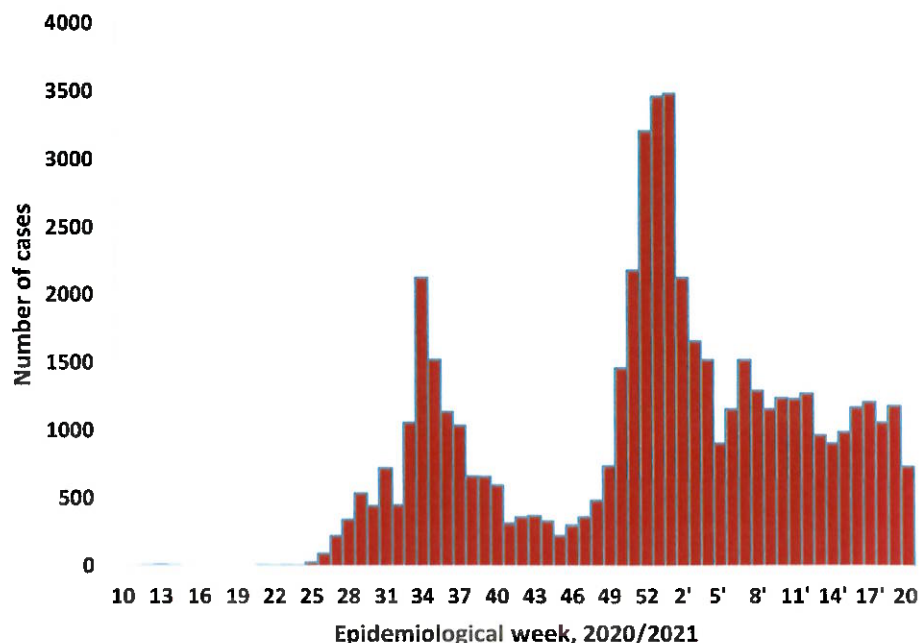


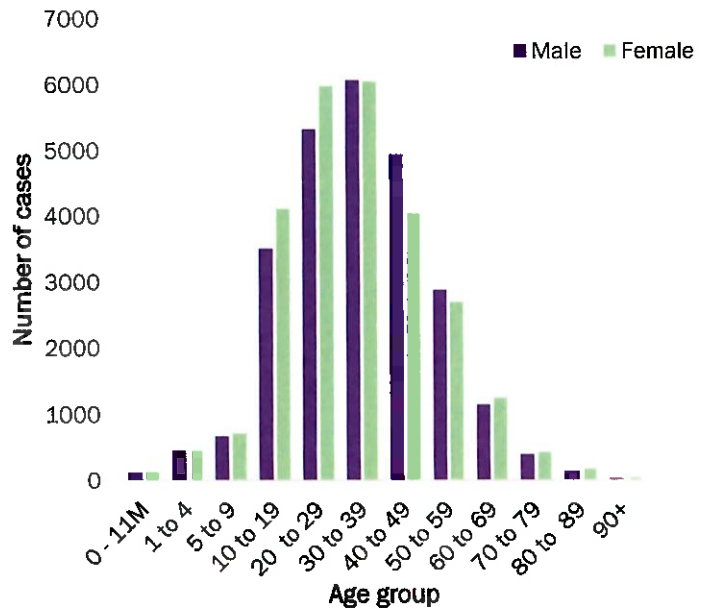
Figure 2: Epi-curve for confirmed COVID-19 cases, 19 May 2021

**Table 3: COVID-19 specimen recorded at the Laboratories
19 May 2021**

VARIABLES	TOTAL
Total samples received by the Laboratory	412834
Total samples tested	400676
Total samples re-tested	12041
Total positive results	52122
Total negative results	348501
Total samples discarded	117
Invalid results	0
Total pending results	46
Indeterminant/Inconclusive	7
Suspected cases in 24 hours (excluding re-tests)	1407

- To date, **412717** tests (including **12041** re-tests) have been conducted by NIP, Path-Care, NAMDEB, UNAM, Namib Poultry, Diagno, NAMPath, Namibia Central Pathology, High Care and Central Veterinary laboratories
- Since the beginning of the outbreak, **93515** contacts of confirmed cases have been identified, **349** new contacts were identified within the last 24 hours from 13 regions.
- Cumulatively, **89601** contacts have completed their monitoring period, while a total of **13249 (25%)** contacts of confirmed cases have tested positive.
- Today, **823 (26%)** out of **3132** active contacts were monitored.

- Of the total confirmed cases, **32607 (63%)** are in the 20-49 years age-brackets which constitutes the majority of the recorded cases.
- A total of **9046 (17%)** of the confirmed cases are among the 5-19 years category.
- The under 5 years age group make up **1177 (2%)** of the total cases whereas, **3673 (7%)** are above 60 years of age.



**Figure 3: Age and Sex distribution of COVID-19 confirmed cases
19 May 2021**

PUBLIC HEALTH ACTION (S)

- The COVID-19 vaccination programme is ongoing throughout the country
- The government and development partners continue to prioritize the continuation of essential health services.

CHALLENGES

- Non-adherence to COVID-19 Infection Prevention and Control (IPC) measures by the general public.

RECOMMENDATIONS

- Continue to give awareness on the importance of adhering to COVID -19 IPC measures; with the involvement of the Security Cluster.

APPROVED

INCIDENT MANAGER
19 MAY 2021

SECRETARIAT

For enquiries, please contact

Namibia Public Health Emergency Operations Centre;

PHEOC@mhss.gov.na

0800 100 100

0851 100 100