



NAMIBIA COVID-19 SITUATION REPORT NO. 429

Outbreak Name	COVID-19 outbreak	Country affected	Namibia
Date & Time	21.05.2021 17h00	Investigation start Date	13 March 2020
Prepared by	Surveillance Team		

HIGHLIGHTS/SITUATION UPDATE (21/05/2021)



- A total of **52712** cases have been recorded to-date, representing **2%** of the population.
- Cases are equally distributed by gender at **50%**.
- Of the total confirmed cases, **2299 (4%)** are Health Workers.
 - 1821 (79%) State; 474 (21%) Private, 4 (0.2%) Non-Governmental Organizations.
 - 2115 (92%) recoveries and 6 (0.3%) deaths.
- The recovery rate now stands at **93%**.
- All fourteen (14) regions have reported confirmed cases; **Khomas and Erongo** regions reported the highest with **18762 (36%)** and **9055 (17%)** respectively.
- Of the total fatalities, **629 (83%)** are COVID-19 deaths while **130 (17%)** are COVID-19 related deaths.

Table 1: Distribution of confirmed COVID-19 cases and Vaccines administered by region, 21 May 2021

Region	Total No. of cases	Active cases	Recoveries	Cumulative Deaths	Non-COVID deaths	Health Workers	Vaccine data	
							1 st dose	2 nd dose
Erongo	9055	213	8693	144	5	238	6557	762
Hardap	3204	241	2911	52	0	77	2852	193
//Kharas	3284	141	3091	52	0	145	2490	157
Kavango East	2000	69	1907	24	0	127	4451	338
Kavango West	232	3	227	2	0	12	1968	88
Khomas	18762	1361	17130	270	1	927	20897	2305
Kunene	1611	64	1531	16	0	57	2879	177
Ohangwena	1352	47	1284	19	2	65	3238	247
Omaheke	1233	38	1170	25	0	47	3079	143
Omusati	1385	115	1259	11	0	42	3154	116
Oshana	3203	124	3035	43	1	247	3057	474
Oshikoto	2891	125	2742	22	2	131	1438	235
Otjozondjupa	3700	233	3398	69	0	143	4923	344
Zambezi	800	26	760	14	0	41	1003	94
Total	52712	2800	49138	763	11	2299	61986	5673

EPIDEMIOLOGICAL SITUATION IN NAMIBIA

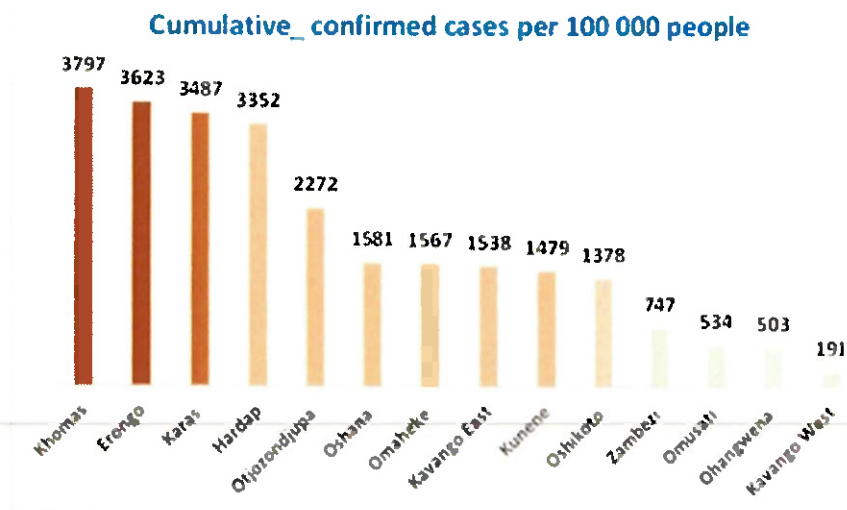
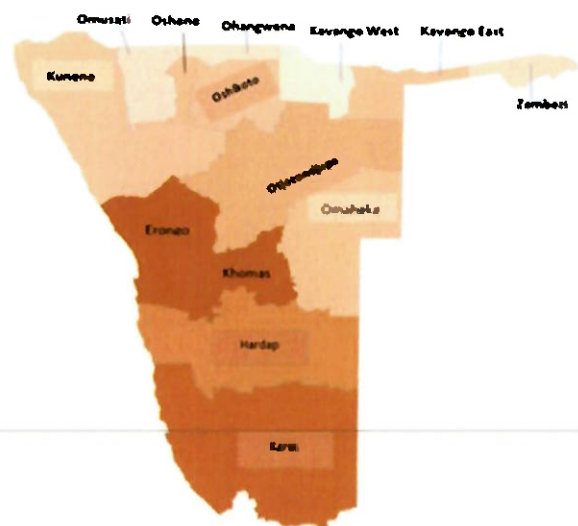


Figure 1: Distribution of cumulative confirmed cases per 100 000 by region, 21 May 2021

Table 2: Number of people in mandatory quarantine facilities, 21 May 2021

Region	Newly quarantined 24 hours	Cumulative number	Number discharged	Number in quarantine now
Erongo	0	5660	5461	199
Hardap	0	1823	1756	67
Kavango (East and West)	0	1397	1383	14
Khomas	4	3486	3462	24
//Kharas	16	6300	6032	268
Kunene	0	4988	4934	54
Ohangwena	0	695	695	0
Omaheke	94	6805	6481	324
Omusati	0	569	569	0
Oshana	0	400	400	0
Oshikoto	40	12736	12484	252
Otjozondjupa	0	1540	1476	64
Zambezi	0	1791	1624	167
Total	154	48190	46757	1433

Since March 2020, **48190** people have been placed into mandatory quarantine facilities around the country.

A total of **1433** people are currently in quarantine, with **154** new admissions.

➤ The highest peaks of **3463 (7%)** and **3485 (7%)** cases were recorded during week 53 of 2020 and 1 of 2021 respectively (Figure 2).

The National Call Center continues operations for 24 hours daily.

Today (21/05/2021), **516** calls were answered including **7** alerts.

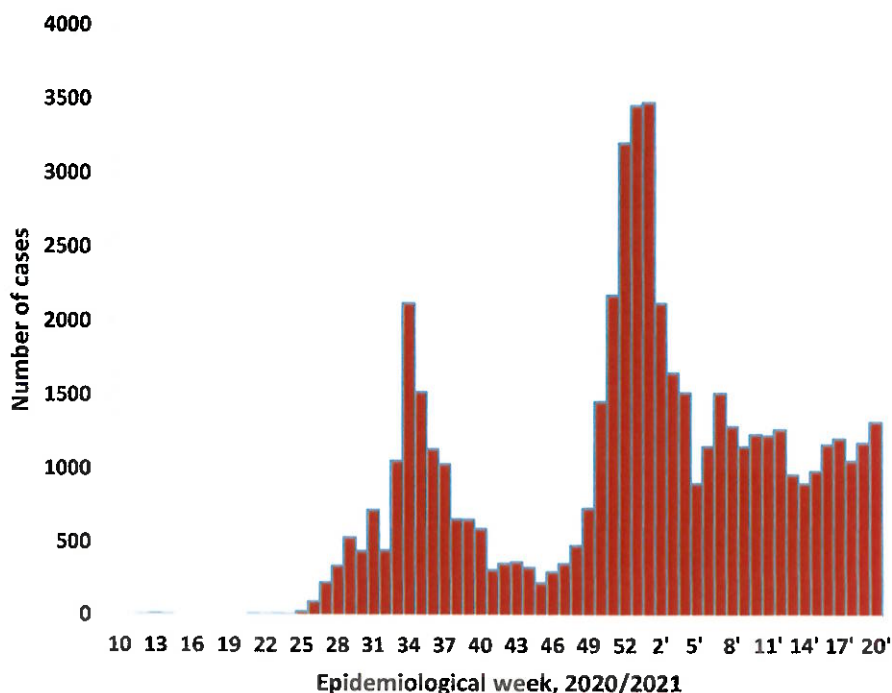


Figure 2: Epi-curve for confirmed COVID-19 cases, 21 May 2021

**Table 3: COVID-19 specimen recorded at the Laboratories
21 May 2021**

VARIABLES	TOTAL
Total samples received by the Laboratory	417004
Total samples tested	404811
Total samples re-tested	12076
Total positive results	52712
Total negative results	352046
Total samples discarded	117
Invalid results	0
Total pending results	46
Indeterminant/Inconclusive	7
Suspected cases in 24 hours (excluding re-tests)	1754

- To date, **416887** tests (including **12076** re-tests) have been conducted by NIP, Path-Care, NAMDEB, UNAM, Namib Poultry, Diagno, NAMPath, Namibia Central Pathology, High Care and Central Veterinary laboratories
- Since the beginning of the outbreak, **94069** contacts of confirmed cases have been identified, **263** new contacts were identified within the last 24 hours from 10 regions.
- Cumulatively, **90259** contacts have completed their monitoring period, while a total of **13359 (25%)** contacts of confirmed cases have tested positive.
- Today, **969 (32%)** out of **3038** active contacts were monitored.

- Of the total confirmed cases, **32937 (62%)** are in the 20-49 years age-brackets which constitutes the majority of the recorded cases.
- A total of **9113 (17%)** of the confirmed cases are among the 5-19 years category.
- The under 5 years age group make up **1199 (2%)** of the total cases whereas, **3754 (7%)** are above 60 years of age.

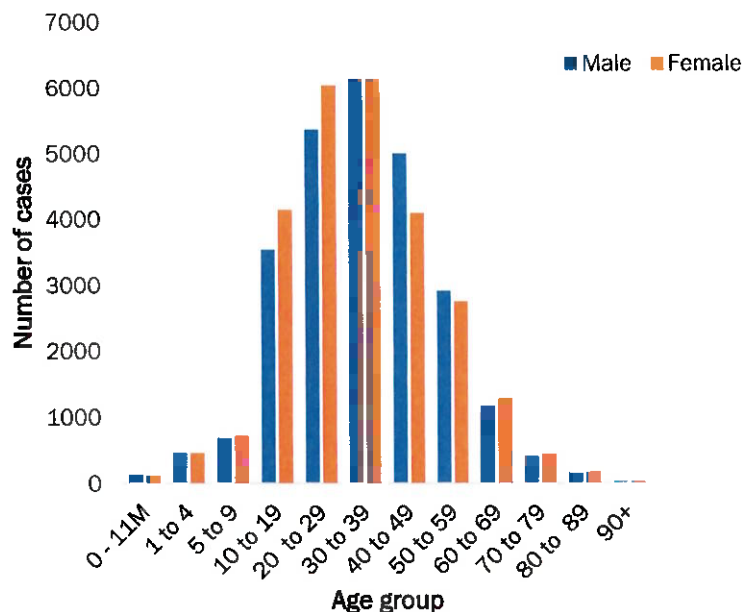


Figure 3: Age and Sex distribution of COVID-19 confirmed cases 21 May 2021

PUBLIC HEALTH ACTION (S)

- The COVID-19 vaccination programme is ongoing throughout the country
- The government and development partners continue to prioritize the continuation of essential health services.

CHALLENGES

- Non-adherence to COVID-19 Infection Prevention and Control (IPC) measures by the general public.

RECOMMENDATIONS

- Continue to give awareness on the importance of adhering to COVID -19 IPC measures; with the involvement of the Security Cluster.

APPROVED

INCIDENT MANAGER
21 MAY 2021

SECRETARIAT

For enquiries, please contact
Namibia Public Health Emergency Operations Centre;

PHEOC@mhss.gov.na

0800 100 100

0851 100 100