



NAMIBIA COVID-19 SITUATION REPORT NO. 430

Outbreak Name	COVID-19 outbreak	Country affected	Namibia
Date & Time	22.05.2021 17h00	Investigation start Date	13 March 2020
Prepared by	Surveillance Team		

HIGHLIGHTS/SITUATION UPDATE (22/05/2021)

CUMULATIVE

Tested 418210

Confirmed 52946

Active 2957

Recovered 49213

Death 765

TOTAL TODAY

Tested 1323

Confirmed 234

Active 2957

Recovered 75

Death 2

- A total of **52946** cases have been recorded to-date, representing **2%** of the population.
- Cases are equally distributed by gender at **50%**.
- Of the total confirmed cases, **2310 (4%)** are Health Workers.
 - 1832 (79%) State; 474 (21%) Private, 4 (0.2%) Non-Governmental Organizations.
 - 2115 (92%) recoveries and 6 (0.3%) deaths.
- The recovery rate now stands at **93%**.
- All fourteen (14) regions have reported confirmed cases; *Khomas and Erongo* regions reported the highest with **18907 (36%)** and **9071 (17%)** respectively.
- Of the total fatalities, **633 (83%)** are COVID-19 deaths while **132 (17%)** are COVID-19 related deaths.

Table 1: Distribution of confirmed COVID-19 cases and Vaccines administered by region, 22 May 2021

Region	Total No. of cases	Active cases	Recoveries	Cumulative Deaths	Non-COVID deaths	Health Workers	Vaccine data	
							1 st dose	2 nd dose
Erongo	9071	228	8693	145	5	239	6557	762
Hardap	3224	230	2942	52	0	77	2852	193
//Kharas	3288	141	3094	53	0	145	2490	157
Kavango East	2003	72	1907	24	0	128	4451	338
Kavango West	232	3	227	2	0	12	1968	88
Khomas	18907	1506	17130	270	1	936	20897	2305
Kunene	1616	66	1534	16	0	57	2879	177
Ohangwena	1352	47	1284	19	2	65	3238	247
Omaheke	1237	15	1197	25	0	47	3079	143
Omusati	1385	115	1259	11	0	42	3154	116
Oshana	3205	126	3035	43	1	247	3057	474
Oshikoto	2898	132	2742	22	2	131	1438	235
Otjozondjupa	3728	261	3398	69	0	143	4923	344
Zambezi	800	15	771	14	0	41	1003	94
Total	52946	2957	49213	765	11	2310	61986	5673

EPIDEMIOLOGICAL SITUATION IN NAMIBIA

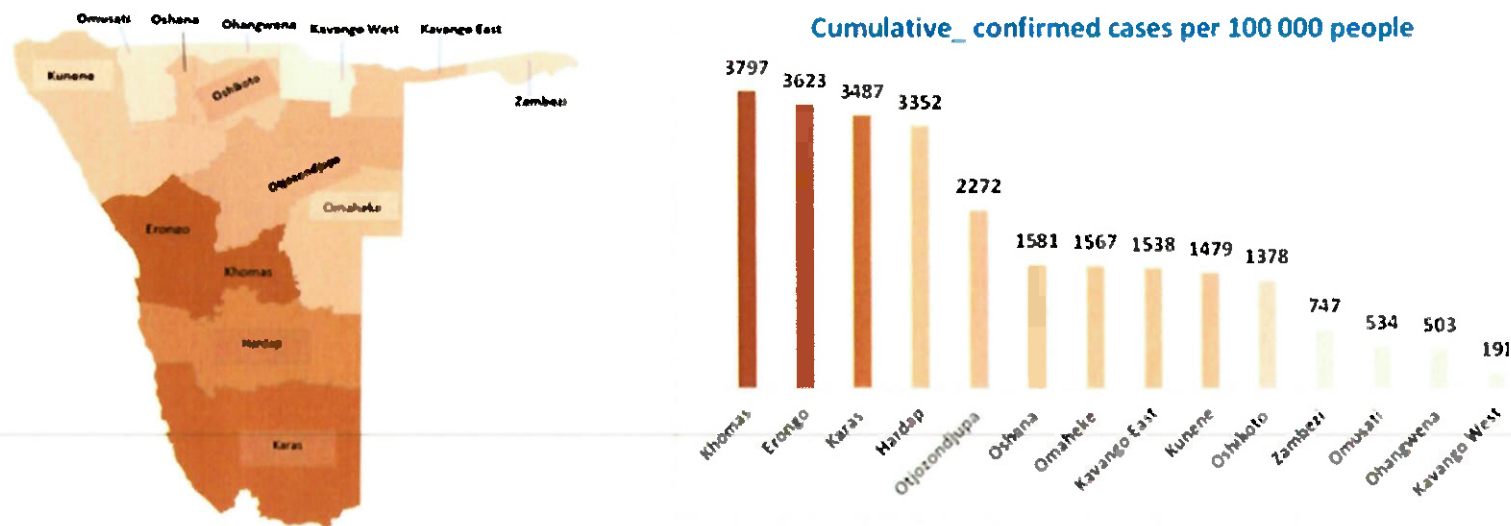


Figure 1: Distribution of cumulative confirmed cases per 100 000 by region, 22 May 2021

Table 2: Number of people in mandatory quarantine facilities, 22 May 2021

Region	Newly quarantined 24 hours	Cumulative number	Number discharged	Number in quarantine now
Erongo	0	5660	5461	199
Hardap	36	1859	1809	50
Kavango (East and West)	0	1397	1383	14
Khomas	0	3486	3462	24
//Kharas	0	6300	6032	268
Kunene	0	4988	4934	54
Ohangwena	0	695	695	0
Omaheke	25	6830	6627	203
Omusati	0	569	569	0
Oshana	0	400	400	0
Oshikoto	0	12736	12484	252
Otjozondjupa	0	1540	1476	64
Zambezi	0	1791	1624	167
Total	61	48251	46956	1295

Since March 2020, **48251** people have been placed into mandatory quarantine facilities around the country.

A total of **1295** people are currently in quarantine, with **61** new admissions.

➤ The highest peaks of **3463 (7%)** and **3485 (7%)** cases were recorded during week 53 of 2020 and 1 of 2021 respectively (Figure 2).

The National Call Center continues operations for 24 hours daily.

Today (22/05/2021), **529** calls were answered including **5** alerts.

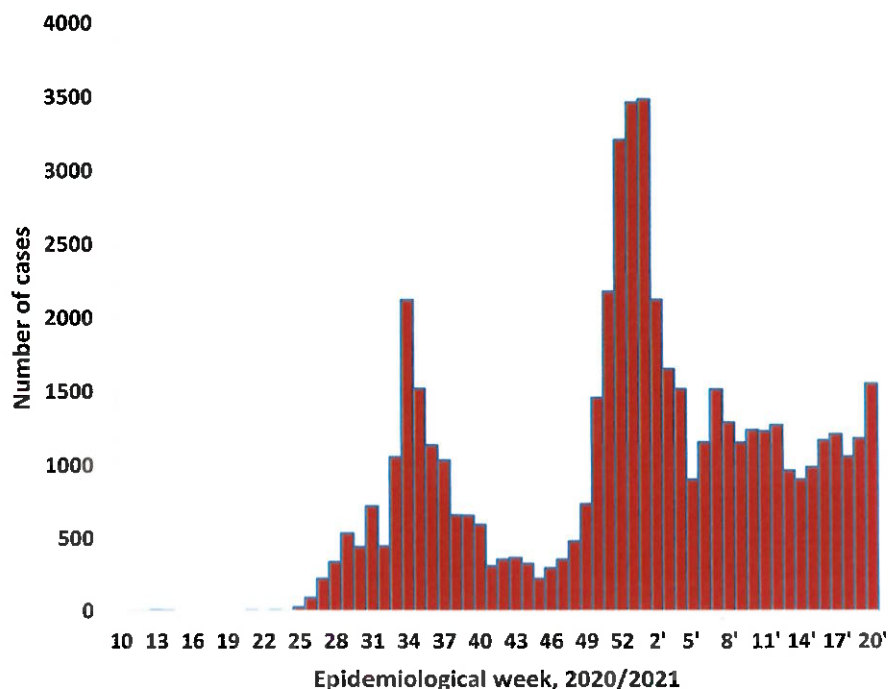


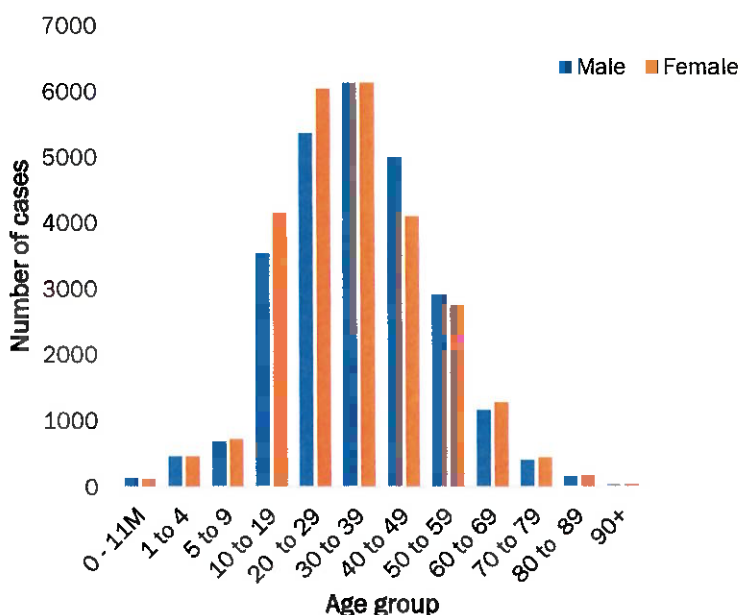
Figure 2: Epi-curve for confirmed COVID-19 cases, 22 May 2021

**Table 3: COVID-19 specimen recorded at the Laboratories
22 May 2021**

VARIABLES	TOTAL
Total samples received by the Laboratory	418327
Total samples tested	406129
Total samples re-tested	12081
Total positive results	52946
Total negative results	353130
Total samples discarded	117
Invalid results	0
Total pending results	46
Indeterminant/Inconclusive	7
Suspected cases in 24 hours (excluding re-tests)	1318

- To date, **418210** tests (including **12081** re-tests) have been conducted by NIP, Path-Care, NAMDEB, UNAM, Namib Poultry, Diagno, NAMPath, Namibia Central Pathology, High Care and Central Veterinary laboratories
- Since the beginning of the outbreak, **94289** contacts of confirmed cases have been identified, **220** new contacts were identified within the last 24 hours from 11 regions.
- Cumulatively, **90352** contacts have completed their monitoring period, while a total of **13379 (25%)** contacts of confirmed cases have tested positive.
- Today, **1868 (59%)** out of **3165** active contacts were monitored.

- Of the total confirmed cases, **33093 (62%)** are in the 20-49 years age-brackets which constitutes the majority of the recorded cases.
- A total of **9136 (17%)** of the confirmed cases are among the 5-19 years category.
- The under 5 years age group make up **1206 (2%)** of the total cases whereas, **3777 (7%)** are above 60 years of age.



**Figure 3: Age and Sex distribution of COVID-19 confirmed cases
22 May 2021**

PUBLIC HEALTH ACTION (S)

- The COVID-19 vaccination programme is ongoing throughout the country
- The government and development partners continue to prioritize the continuation of essential health services.


CHALLENGES


- Non-adherence to COVID-19 Infection Prevention and Control (IPC) measures by the general public.

RECOMMENDATIONS

- Continue to give awareness on the importance of adhering to COVID -19 IPC measures; with the involvement of the Security Cluster.

APPROVED


INCIDENT MANAGER
22 MAY 2021


SECRETARIAT

For enquiries, please contact
Namibia Public Health Emergency Operations Centre;
 PHEOC@mhss.gov.na
 0800 100 100
 0851 100 100