



NAMIBIA COVID-19 SITUATION REPORT NO. 438

Outbreak Name	COVID-19 outbreak	Country affected	Namibia
Date & Time	30.05.2021 17h00	Investigation start Date	13 March 2020
Prepared by	Surveillance Team		

HIGHLIGHTS/SITUATION UPDATE (30/05/2021)

CUMULATIVE

Tested 432187

Confirmed 55549

Active 4033

Recoveries 50675

Deaths 830

TOTAL TODAY

Tested 2234

Confirmed 408

Active 4033

Recoveries 232

Deaths 6

- A total of **55549** cases have been recorded to-date, representing **2%** of the total population (**2550226**).
- More female cases **28187 (51%)** have been recorded compared to male cases **27362 (49%)**.
- Of the total confirmed cases, **2420 (4%)** are Health Workers.
- **1925 (80%) State; 491 (20%) Private, 4 (0.2%) Non-Governmental Organizations.**
- **2213 (91%) recoveries and 6 (0.2%) deaths.**
- The recovery rate now stands at **91%**.
- *All fourteen (14) regions have reported confirmed cases; Khomas and Erongo regions reported the highest with **20135 (36%)** and **9304 (17%)** respectively.*
- *Of the total fatalities, **692 (83%)** are COVID-19 deaths while **138 (17%)** are COVID-19 related deaths. The case fatality rate now stands at **1%**.*

Table 1: Distribution of confirmed COVID-19 cases and Vaccines administered by region, 30 May 2021

Region	Total No. of cases	Active cases	Recoveries	Cumulative Deaths	Cumulative deaths with co-morbidities	Non-COVID deaths	Health Workers
Erongo	9304	227	8923	149	134	5	247
Hardap	3503	274	3170	59	39	0	84
//Kharas	3457	172	3227	58	48	0	151
Kavango East	2060	90	1945	25	19	0	134
Kavango West	236	7	227	2	2	0	12
Khomas	20135	2302	17536	296	251	1	989
Kunene	1651	41	1594	16	16	0	60
Oshana	1417	72	1322	21	17	2	70
Omaheke	1354	52	1274	28	23	0	49
Omusati	1419	148	1259	12	8	0	44
Oshana	3341	252	3035	53	35	1	256
Oshikoto	3008	98	2882	26	22	2	137
Otjozondjupa	3853	278	3504	71	54	0	145
Zambezi	811	20	777	14	10	0	42
Total	55549	4033	50675	830	678	11	2420

EPIDEMIOLOGICAL SITUATION IN NAMIBIA

Table 2: Summary of COVID-19 vaccines administered, as of 30 May 2021

Region	Cumulative no. of persons vaccinated with doses of Sinopharm and AZ		Cumulative no. of Healthcare Workers vaccinated with doses of Sinopharm and AZ	
	1 st Dose	2 nd Dose	1 st Dose	2 nd Dose
Erongo	7169	910	441	135
Hardap	2993	380	272	44
//Kharas	2634	313	416	87
Kavango East	4780	651	529	74
Kavango West	2008	186	221	19
Khomas	23129	2761	1677	494
Kunene	3159	609	407	218
Ohangwena	3813	611	396	91
Omaheke	3078	539	249	93
Omusati	3482	327	558	86
Oshana	3363	728	695	270
Oshikoto	1585	297	330	106
Otjozondjupa	5507	611	425	100
Zambezi	1164	162	201	39
Total	67864	9085	6817	1856

- Of the total confirmed cases, **34610 (62%)** are in the 20-49 years age-brackets which constitutes the majority of the recorded cases.
- A total of **9466 (17%)** of the confirmed cases are among the 5-19 years category.
- The under 5 years age group make up **1256 (2%)** of the total cases whereas, **4108 (7%)** are above 60 years of age.

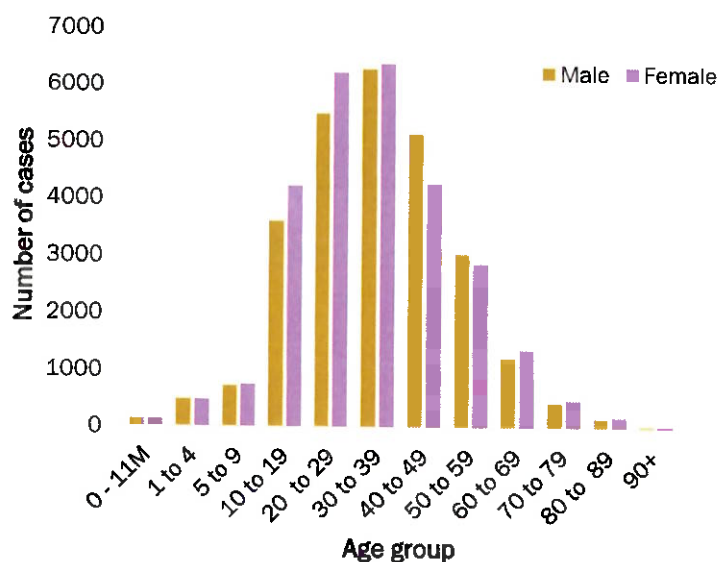


Figure 1: Age and Sex distribution of COVID-19 confirmed cases 30 May 2021

Table 3: COVID-19 specimen recorded at the Laboratories 30 May 2021

VARIABLES	TOTAL
Total samples received by the Laboratory	432304
Total samples tested	420034
Total samples re-tested	12153
Total positive results	55549
Total negative results	364432
Total samples discarded	117
Invalid results	0
Total pending results	46
Indeterminant/Inconclusive	7
Suspected cases in 24 hours (excluding re-tests)	2223

- To date, **432187** tests (including **12153** re-tests) have been conducted by NIP, Path-Care, NAMDEB, UNAM, Namib Poultry, Diagno, NAMPath, Namibia Central Pathology, High Care and Central Veterinary laboratories
- Since the beginning of the outbreak, **96586** contacts of confirmed cases have been identified, **549** new contacts were identified within the last 24 hours from 13 regions.
- Cumulatively, **92574** contacts have completed their monitoring period, while **118** contacts are lost to follow-up and a total of **13797 (25%)** contacts of confirmed cases have positive.
- Today, **677 (21%)** out of **3173** active contacts were monitored.

➤ The highest peaks of **3463 (6%)** and **3485 (6%)** cases were recorded during week 53 of 2020 and 1 of 2021 respectively (Figure 2).

➤ The National Call Center continues operations for 24 hours daily.

➤ Today (30/05/2021), **466** calls were answered including **8** alerts.

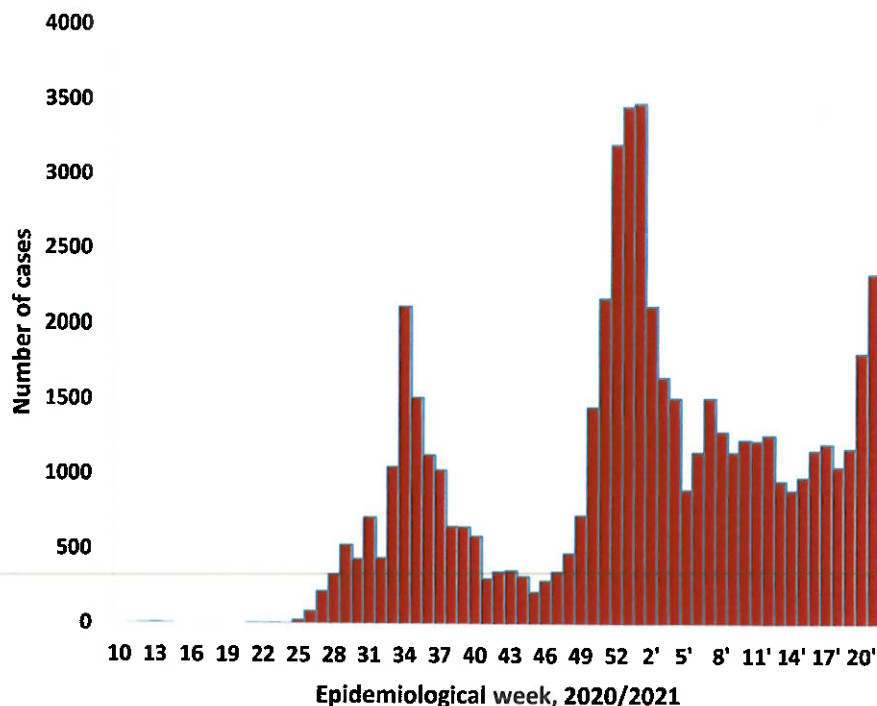
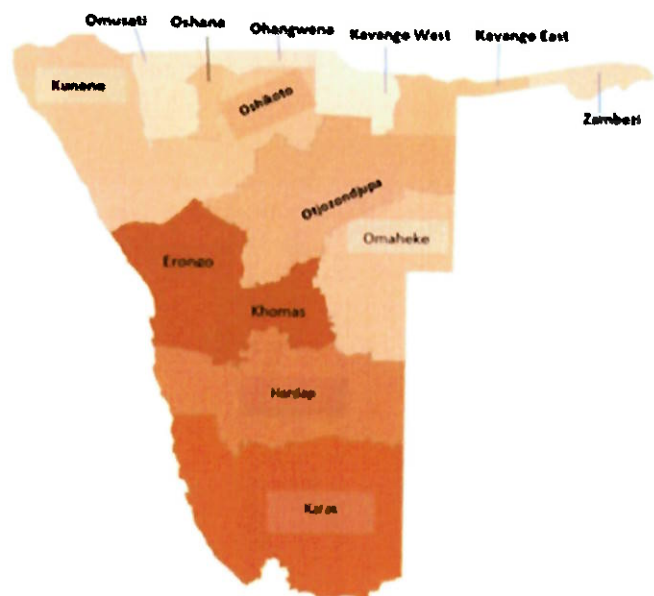


Figure 2: Epi-curve for confirmed COVID-19 cases, 30 May 2021



Cumulative_confirmed cases per 100 000 people

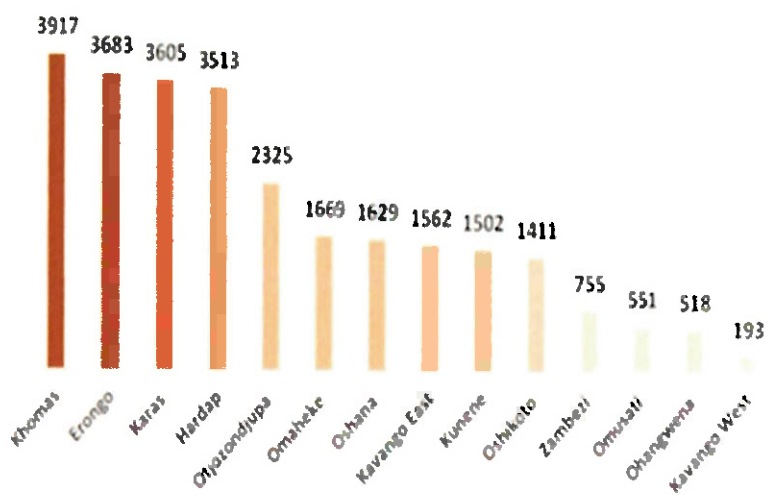


Figure 3: Distribution of cumulative confirmed cases per 100 000 by region, 30 May 2021

Table 4: Number of people in mandatory quarantine facilities, 30 May 2021

Region	Newly quarantined 24 hours	Cumulative number	Number discharged	Number in quarantine now
Erongo	0	5683	5608	75
Hardap	0	1923	1869	54
Kavango (East and West)	17	1443	1421	22
Khomas	0	3501	3462	39
//Kharas	16	6543	6113	430
Kunene	0	4988	4934	54
Ohangwena	0	695	695	0
Omaheke	122	7300	7021	279
Omusati	0	948	569	379
Oshana	0	400	400	0
Oshikoto	0	13234	12731	503
Otjozondjupa	0	1540	1476	64
Zambezi	0	1791	1624	167
Total	155	49989	47923	2066

➤ Since March 2020, **49989** people have been placed into mandatory quarantine facilities around the country.

➤ A total of **2066** people are currently in quarantine, with **155** new admissions.

PUBLIC HEALTH ACTION (S)

- The Minister of Health and Social Services has announced the dispensation of the revised public health COVID-19 general health regulations to be effective as of 01 June 2021 until 30 June 2021.
- The COVID-19 vaccination programme is ongoing throughout the country
- The government and development partners continue to prioritize the continuation of essential health services.

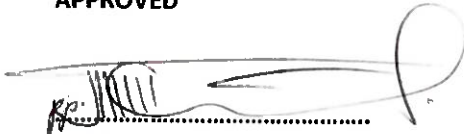
CHALLENGES

- Non-adherence to COVID-19 Infection Prevention and Control (IPC) measures by the general public.

RECOMMENDATIONS

- Continue to give awareness on the importance of adhering to COVID -19 IPC measures; with the involvement of the Security Cluster.

APPROVED




INCIDENT MANAGER
30 MAY 2021



SECRETARIAT

For enquiries, please contact

Namibia Public Health Emergency Operations Centre;

 PHEOC@mhss.gov.na

 0800 100 100

 0851 100 100