



## NAMIBIA COVID-19 SITUATION REPORT NO. 441

<b>Outbreak Name</b>	COVID-19 outbreak	<b>Country affected</b>	Namibia
<b>Date &amp; Time</b>	02.06.2021 17h00	<b>Investigation start Date</b>	13 March 2020
<b>Prepared by</b>	Surveillance Team		

### HIGHLIGHTS/SITUATION UPDATE (02/06/2021)

CUMULATIVE	TOTAL TODAY
Tested 438132	Tested 3146
Confirmed 56981	Confirmed 717
Active 4916	Active 4916
Recovered 51177	Recovered 129
Death 877	Death 12

- Today, the country has recorded the highest number of confirmed cases since the beginning of the outbreak.
- A total of **56981** cases have been recorded to-date, representing **2%** of the total population (**2550226**).
- More female cases **28985 (51%)** have been recorded compared to male cases **27996 (49%)**.
- Of the total confirmed cases, **2490 (4%)** are Health Workers.
- **1989 (80%) State; 497 (20%) Private, 4 (0.2%) Non-Governmental Organizations.**
- **2213 (89%) recoveries and 6 (0.2%) deaths.**
- The recovery rate now stands at **90%**.
- **All fourteen (14) regions have reported confirmed cases; Khomas and Erongo regions reported the highest with 20900 (37%) and 9441 (17%) respectively.**
- **Of the total fatalities, 734 (83%) are COVID-19 deaths while 143 (17%) are COVID-19 related deaths. The case fatality rate now stands at 2%.**

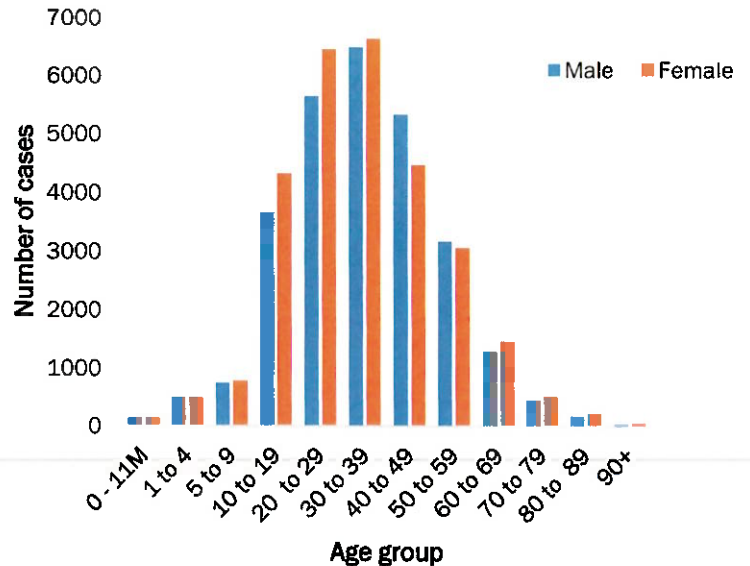
**Table 1: Distribution of confirmed COVID-19 cases by region, 02 June 2021**

Region	Total No. of cases	Active cases	Recoveries	Cumulative Deaths	Cumulative deaths with co-morbidities	Non-COVID deaths	Health Workers
Erongo	9441	361	8923	152	137	5	250
Hardap	3634	398	3177	59	39	0	92
//Kharas	3541	210	3270	61	51	0	153
Kavango East	2072	102	1945	25	19	0	134
Kavango West	236	6	227	3	3	0	12
Khomas	20900	2806	17783	310	264	1	1033
Kunene	1666	44	1605	17	17	0	60
Ohangwena	1452	105	1322	23	18	2	73
Omaheke	1383	26	1324	33	27	0	49
Omusati	1449	175	1259	15	11	0	44
Oshana	3436	345	3035	55	36	1	263
Oshikoto	3036	35	2972	27	23	2	140
Otjozondjupa	3908	268	3558	82	63	0	145
Zambezi	827	35	777	15	11	0	42
<b>Total</b>	<b>56981</b>	<b>4916</b>	<b>51177</b>	<b>877</b>	<b>719</b>	<b>11</b>	<b>2490</b>



## EPIDEMIOLOGICAL SITUATION IN NAMIBIA

- Of the total confirmed cases, **35487 (62%)** are in the 20-49 years age-brackets which constitutes the majority of the recorded cases.
- A total of **9614 (17%)** of the confirmed cases are among the 5-19 years category.
- The under 5 years age group make up **1285 (2%)** of the total cases whereas, **4269 (7%)** are above 60 years of age.



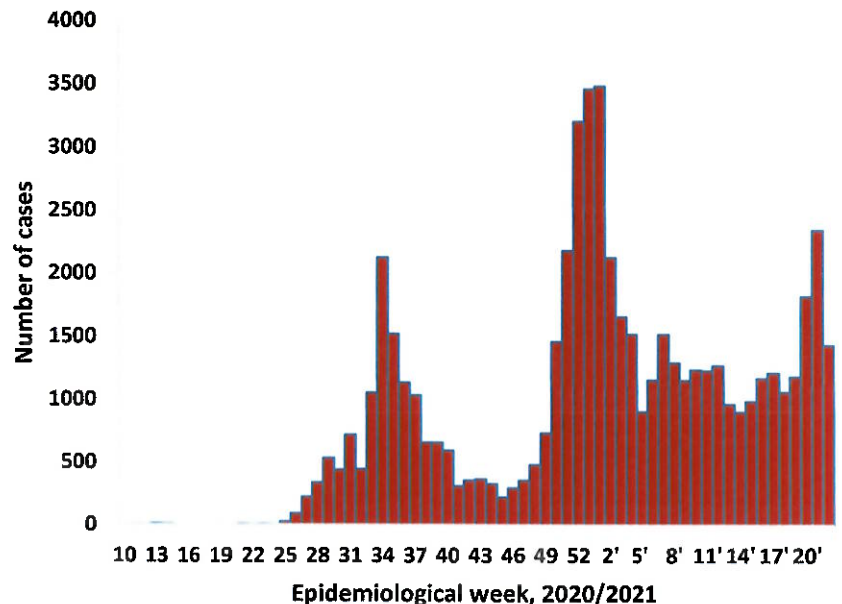
**Figure 1: Age and Sex distribution of COVID-19 confirmed cases 02 June 2021**

**Table 2: Summary of COVID-19 vaccines administered, as of 02 June 2021**

Region	Cumulative no. of persons vaccinated with doses of Sinopharm and AZ		Cumulative no. of Healthcare Workers vaccinated with doses of Sinopharm and AZ	
	1 <sup>st</sup> Dose	2 <sup>nd</sup> Dose	1 <sup>st</sup> Dose	2 <sup>nd</sup> Dose
Erongo	7705	1012	476	141
Hardap	3075	443	276	51
//Kharas	2812	352	419	95
Kavango East	4829	819	541	84
Kavango West	2008	222	221	25
Khomas	24876	3101	1752	535
Kunene	3359	755	410	222
Ohangwena	4059	707	408	110
Omaheke	3171	576	253	98
Omusati	3871	431	568	88
Oshana	3613	784	712	286
Oshikoto	1771	354	351	111
Otjozondjupa	5960	778	438	117
Zambezi	1262	202	208	46
<b>Total</b>	<b>72371</b>	<b>10536</b>	<b>7033</b>	<b>2009</b>

- The highest peaks of **3463 (6%)** and **3485 (6%)** cases were recorded during week 53 of 2020 and 1 of 2021 respectively (Figure 2).

- The National Call Center continues operations for 24 hours daily.
- Today (02/06/2021), **529** calls were answered including **10** alerts.

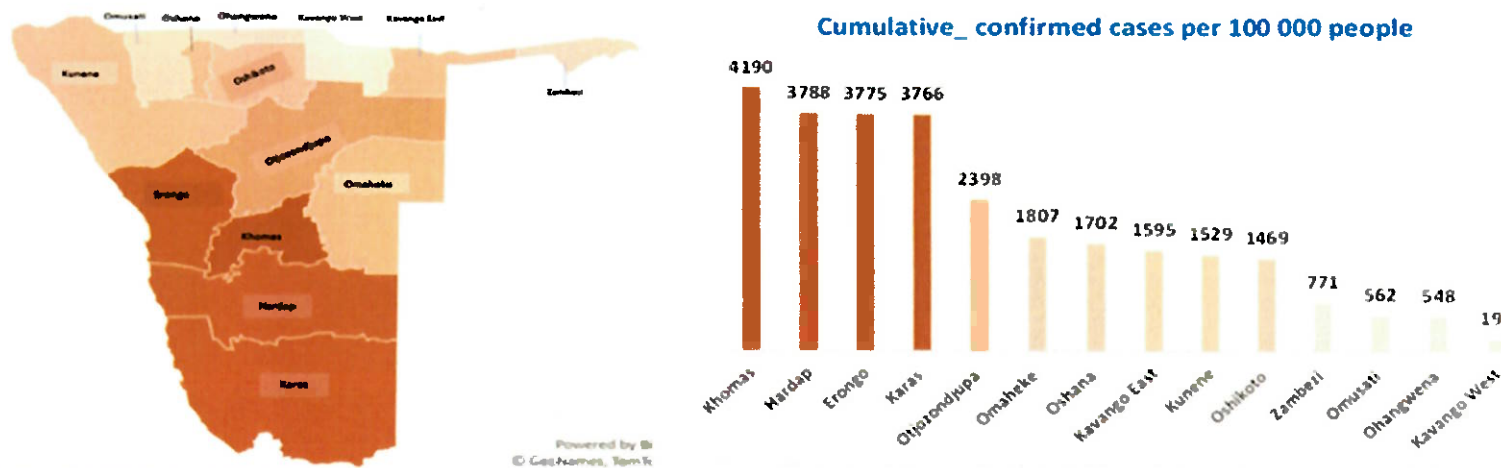


**Figure 2: Epi-curve for confirmed COVID-19 cases, 02 June 2021**

**Table 3: Number of people in mandatory quarantine facilities, 02 June 2021**

Region	Newly quarantined 24 hours	Cumulative number	Number discharged	Number in quarantine now
Erongo	0	5683	5608	75
Hardap	4	1948	1888	60
Kavango (East and West)	2	1448	1431	17
Khomas	0	3501	3477	24
//Kharas	31	6651	6252	399
Kunene	0	5107	5054	53
Ohangwena	0	695	695	0
Omaheke	90	7551	7362	189
Omusati	0	948	569	379
Oshana	0	400	400	0
Oshikoto	62	13458	13039	419
Otjozondjupa	0	1540	1540	0
Zambezi	0	1791	1624	167
<b>Total</b>	<b>189</b>	<b>50721</b>	<b>48939</b>	<b>1782</b>

- Since March 2020, **50721** people have been placed into mandatory quarantine facilities around the country.
- A total of **1782** people are currently in quarantine, with **189** new admissions.



**Figure 3: Distribution of cumulative confirmed cases per 100 000 by region, 02 June 2021**

**Table 4: COVID-19 specimen recorded at the Laboratories 02 June 2021**

VARIABLES	TOTAL
Total samples received by the Laboratory	438249
Total samples tested	425942
Total samples re-tested	12190
Total positive results	56981
Total negative results	368908
Total samples discarded	117
Invalid results	0
Total pending results	46
Indeterminant/Inconclusive	7
Suspected cases in 24 hours (excluding re-tests)	3129

- To date, **438132** tests (including **12190** re-tests) have been conducted by NIP, Path-Care, NAMDEB, UNAM, Namib Poultry, Diagno, NAMPath, Namibia Central Pathology, High Care and Central Veterinary laboratories
- Since the beginning of the outbreak, **97897** contacts of confirmed cases have been identified, **354** new contacts were identified within the last 24 hours from 13 regions.
- Cumulatively, **93587** contacts have completed their monitoring period, while **118** contacts are lost to follow-up and a total of **14059 (25%)** contacts of confirmed cases have positive.
- Today, **2506 (73%)** out of **3442** active contacts were monitored.



### PUBLIC HEALTH ACTION (S)

- The COVID-19 vaccination programme is ongoing throughout the country
- The government and development partners continue to prioritize the continuation of essential health services.

### CHALLENGES

- Non-adherence to COVID-19 Infection Prevention and Control (IPC) measures by the general public.

### RECOMMENDATIONS

- Continue to give awareness on the importance of adhering to COVID -19 IPC measures; with the involvement of the Security Cluster.

APPROVED



INCIDENT MANAGER

02 June 2021



SECRETARIAT

For enquiries, please contact

**Namibia Public Health Emergency Operations Centre;**



[PHEOC@mhss.gov.na](mailto:PHEOC@mhss.gov.na)



0800 100 100



0851 100 100