



NAMIBIA COVID-19 SITUATION REPORT NO. 440

Outbreak Name	COVID-19 outbreak	Country affected	Namibia
Date & Time	01.06.2021 17h00	Investigation start Date	13 March 2020
Prepared by	Surveillance Team		

HIGHLIGHTS/SITUATION UPDATE (01/06/2021)

CUMULATIVE	TOTAL TODAY
Tested 434986	Tested 1502
Confirmed 56264	Confirmed 452
Active 4340	Active 4340
Recovered 51048	Recovered 100
Death 865	Death 11

- A total of **56264** cases have been recorded to-date, representing **2%** of the total population (**2550226**).
- More female cases **28576 (51%)** have been recorded compared to male cases **27688 (49%)**.
- Of the total confirmed cases, **2458 (4%)** are Health Workers.
- **1959 (80%) State; 495 (20%) Private, 4 (0.2%) Non-Governmental Organizations.**
- **2213 (90%) recoveries and 6 (0.2%) deaths.**
- The recovery rate now stands at **91%**.
- **All fourteen (14) regions have reported confirmed cases; Khomas and Erongo regions reported the highest with 20518 (36%) and 9369 (17%) respectively.**
- **Of the total fatalities, 722 (83%) are COVID-19 deaths while 143 (17%) are COVID-19 related deaths. The case fatality rate now stands at 2%.**

Table 1: Distribution of confirmed COVID-19 cases by region, 01 June 2021

Region	Total No. of cases	Active cases	Recoveries	Cumulative Deaths	Cumulative deaths with co-morbidities	Non-COVID deaths	Health Workers
Erongo	9369	290	8923	151	136	5	248
Hardap	3550	321	3170	59	39	0	89
//Kharas	3502	173	3270	59	49	0	152
Kavango East	2061	91	1945	25	19	0	134
Kavango West	236	6	227	3	3	0	12
Khomas	20518	2451	17763	303	258	1	1010
Kunene	1654	32	1605	17	17	0	60
Ohangwena	1446	100	1322	22	17	2	72
Omaheke	1376	22	1322	32	26	0	49
Omusati	1430	156	1259	15	11	0	44
Oshana	3402	311	3035	55	36	1	261
Oshikoto	3031	120	2882	27	23	2	140
Otjozondjupa	3872	242	3548	82	63	0	145
Zambezi	817	25	777	15	11	0	42
Total	56264	4340	51048	865	708	11	2458

EPIDEMIOLOGICAL SITUATION IN NAMIBIA

- Of the total confirmed cases, **35046 (62%)** are in the 20-49 years age-brackets which constitutes the majority of the recorded cases.
- A total of **9524 (17%)** of the confirmed cases are among the 5-19 years category.
- The under 5 years age group make up **1271 (2%)** of the total cases whereas, **4192 (7%)** are above 60 years of age.

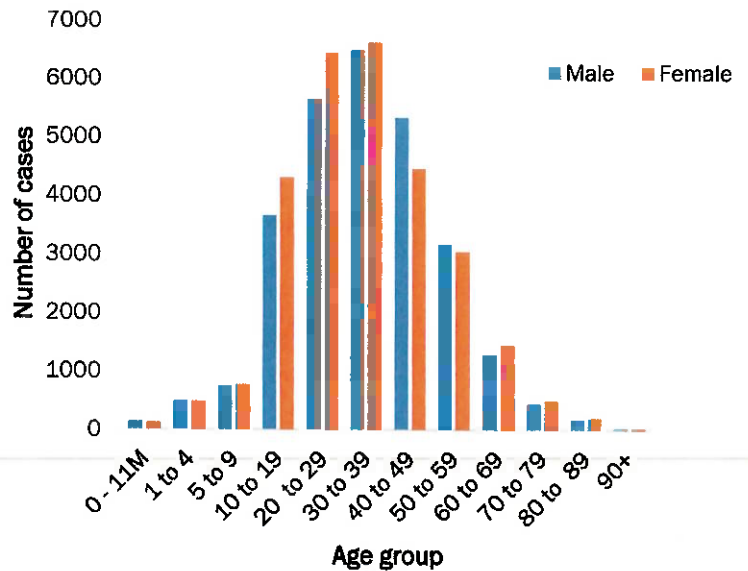


Figure 1: Age and Sex distribution of COVID-19 confirmed cases 01 June 2021

Table 2: Summary of COVID-19 vaccines administered, as of 01 June 2021

Region	Cumulative no. of persons vaccinated with doses of Sinopharm and AZ		Cumulative no. of Healthcare Workers vaccinated with doses of Sinopharm and AZ	
	1 st Dose	2 nd Dose	1 st Dose	2 nd Dose
Erongo	7500	971	466	137
Hardap	3047	416	274	47
//Kharas	2706	328	416	89
Kavango East	4818	761	538	81
Kavango West	2008	204	221	22
Khomas	24208	2980	1722	519
Kunene	3262	726	407	222
Ohangwena	3960	670	404	104
Omaheke	3125	558	250	93
Omusati	3733	394	561	87
Oshana	3520	760	701	277
Oshikoto	1703	329	342	110
Otjozondjupa	5761	716	433	109
Zambezi	1234	187	207	43
Total	70585	10000	6942	1940

- The highest peaks of **3463 (6%)** and **3485 (6%)** cases were recorded during week 53 of 2020 and 1 of 2021 respectively (Figure 2).

- The National Call Center continues operations for 24 hours daily.
- Today (01/06/2021), **465** calls were answered including **8** alerts.

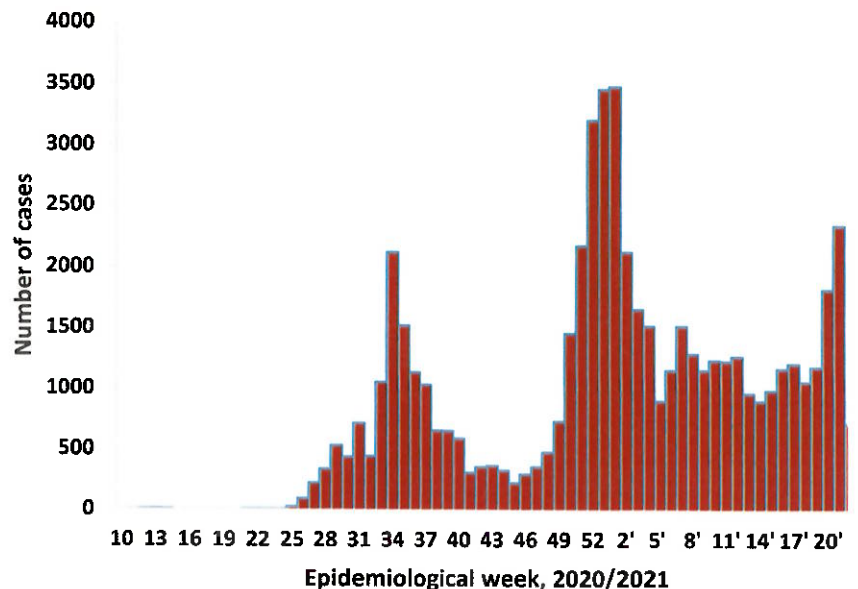


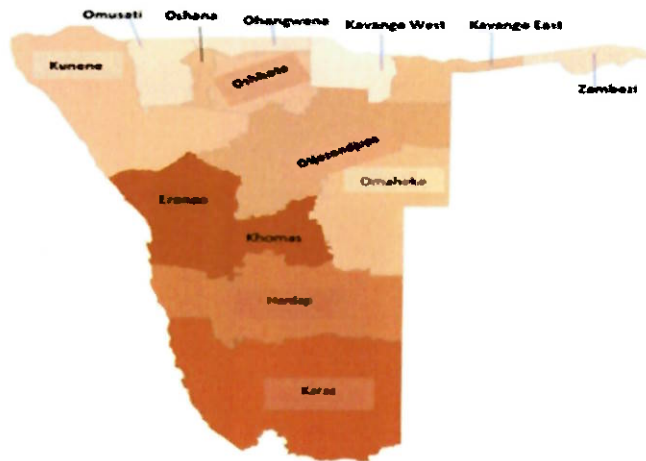
Figure 2: Epi-curve for confirmed COVID-19 cases, 01 June 2021

Table 3: Number of people in mandatory quarantine facilities, 01 June 2021

Region	Newly quarantined 24 hours	Cumulative number	Number discharged	Number in quarantine now
Erongo	0	5683	5608	75
Hardap	7	1944	1882	62
Kavango (East and West)	0	1446	1422	24
Khomas	0	3501	3466	35
//Kharas	42	6620	6216	404
Kunene	0	5107	5054	53
Ohangwena	0	695	695	0
Omaheke	70	7461	7132	329
Omusati	0	948	569	379
Oshana	0	400	400	0
Oshikoto	45	13396	13033	363
Otjizondjupa	0	1540	1540	0
Zambezi	0	1791	1624	167
Total	164	50532	48641	1891

➤ Since March 2020, **50532** people have been placed into mandatory quarantine facilities around the country.

➤ A total of **1891** people are currently in quarantine, with **164** new admissions.



Cumulative_confirmed cases per 100 000 people

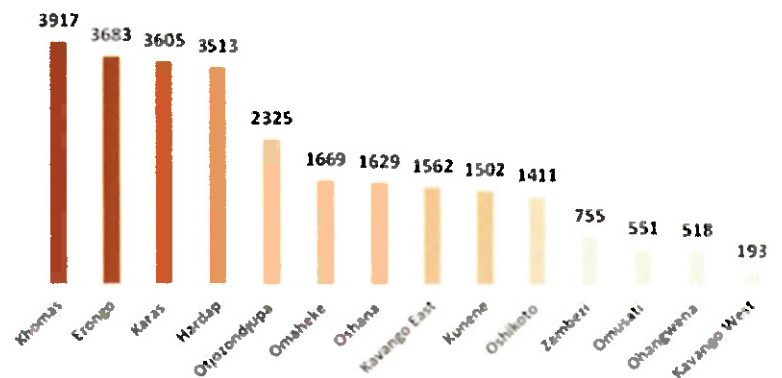


Figure 3: Distribution of cumulative confirmed cases per 100 000 by region, 01 June 2021

Table 4: COVID-19 specimen recorded at the Laboratories 01 June 2021

VARIABLES	TOTAL
Total samples received by the Laboratory	435103
Total samples tested	422813
Total samples re-tested	12173
Total positive results	56264
Total negative results	366496
Total samples discarded	117
Invalid results	0
Total pending results	46
Indeterminant/Inconclusive	7
Suspected cases in 24 hours (excluding re-tests)	1492

➤ To date, **434986** tests (including **12173** re-tests) have been conducted by NIP, Path-Care, NAMDEB, UNAM, Namib Poultry, Diagno, NAMPath, Namibia Central Pathology, High Care and Central Veterinary laboratories

➤ Since the beginning of the outbreak, **97463** contacts of confirmed cases have been identified, **464** new contacts were identified within the last 24 hours from 13 regions.

➤ Cumulatively, **93431** contacts have completed their monitoring period, while **118** contacts are lost to follow-up and a total of **14034 (25%)** contacts of confirmed cases have positive.

➤ Today, **1398 (43%)** out of **3243** active contacts were monitored.

PUBLIC HEALTH ACTION (S)

- The COVID-19 vaccination programme is ongoing throughout the country
- The government and development partners continue to prioritize the continuation of essential health services.

CHALLENGES

- Non-adherence to COVID-19 Infection Prevention and Control (IPC) measures by the general public.

RECOMMENDATIONS

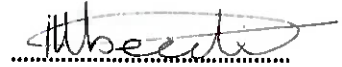
- Continue to give awareness on the importance of adhering to COVID -19 IPC measures; with the involvement of the Security Cluster.

APPROVED



INCIDENT MANAGER

01 June 2021



SECRETARIAT

For enquiries, please contact

Namibia Public Health Emergency Operations Centre;



PHEOC@mhss.gov.na



0800 100 100



0851 100 100