

# South Sudan

**Integrated Disease surveillance and response (IDSR)**

**Epidemiological Bulletin Week 12, 2021 ( March 22- March 28)**



World Health  
Organization  
South Sudan



- In week 12, 2021 IDSR reporting timeliness was 78% and completeness was 93% at health facility level. EWARN reporting timeliness was 85% and completeness was 97%
- Of the 102 alerts in week 12, 2021; 93% were verified 7% were risk assessed and 0% required a response. Malaria (25), AWD (32), ARI (10) measles (2) and bloody diarrhea (23) were the most frequent alerts in week 12, 2021
- Ongoing rubella outbreak confirmed in Tambura county, WES.
- Malaria remains the top cause of morbidity and accounted for 49,348 cases (46.7% of OPD cases)
- A total of 2,272 COVID-19 alerts have been investigated with 2,165 (95.2%) being verified. Total of 10,103 COVID-19 confirmed cases and 109 deaths, CFR of 1.07%
- Other hazards include floods in over 47 counties; malaria in 2 counties and HEV in Bentiu PoC.

# SURVEILLANCE PERFORMANCE



For the Integrated Disease Surveillance (IDSR)  
network and Early warning alert and response  
network (EWARN)



# IDSR timeliness performance at State level for week 12 & 11 of 2021



Completeness States Ranking	States	Number of reporting sites	No. of HFs Reported on Time in WK 12	Timeliness Percentage of WK 12	No. of HFs Reported on Time in WK 11	Timeliness Percentage of WK 11
1st	WES	213	212	100%	212	100%
2nd	NBGZ	131	111	85%	116	89%
3rd	CES	117	99	85%	107	91%
4th	Jonglei	101	84	83%	67	66%
5th	WBGZ	78	57	73%	47	60%
6th	EES	142	100	70%	82	58%
7th	Upper Nile	122	83	68%	88	72%
8th	Unity	94	63	67%	71	76%
9th	Lakes	113	75	66%	99	88%
10th	Warrap	119	73	61%	98	82%
	South Sudan	1230	957	78%	987	80%

## KEY

	<60%	Poor
	61%-79%	Fair
	80%-99%	Good
	100%	Excellent

The timeliness of IDSR reporting (supported by EWARS mobile) at health facility level in week 12 was 80% compared to 0% in week 11. 5 states were above the target of 80% with highest reporting rate in WES

**Reporting challenges:** Insecurity, internet access challenges and lack of network.

# IDSR completeness performance at State level for week 12 & 11 of 2021



Completeness States Ranking	States	Number of reporting sites	No. of HF's Reported regardless of time in WK 12	Completeness Percentage of WK 12	No. of HF's Reported regardless of time in WK 11	Completeness Percentage of WK 11
1st	Lakes	113	113	100%	105	93%
2nd	WES	213	212	100%	212	100%
3rd	Jonglei	101	99	98%	82	81%
4th	CES	117	112	96%	111	95%
5th	WBGZ	78	73	94%	76	97%
6th	Unity	94	87	93%	87	93%
7th	NBGZ	131	121	92%	120	92%
8th	EES	142	125	88%	114	80%
9th	Upper Nile	122	106	87%	98	80%
10th	Warrap	119	93	78%	99	83%
	South Sudan	1230	1141	93%	1104	90%

## KEY

	<60%	Poor
	61%-79%	Fair
	80%-99%	Good
	100%	Excellent

The completeness of IDSR reporting (supported by EWARS mobile) at health facility level was 93% in week 12 compared 90% in week 11. All states were above the target of 80% with highest reporting rate in Lakes

**Reporting challenges:** Insecurity, internet access challenges and lack of network.



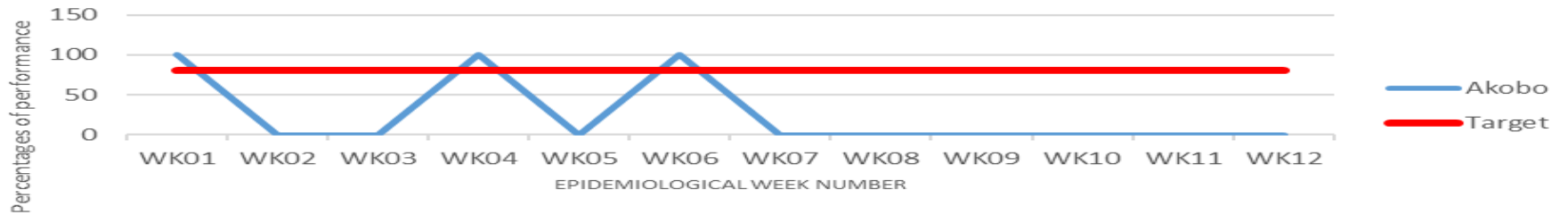


# Surveillance: EWARS performance indicator by partner for week 12 of 2021

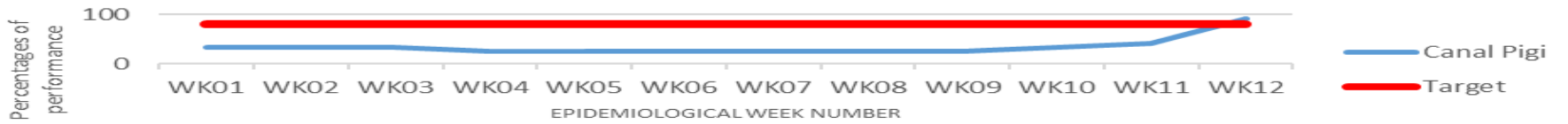
Partner	HFs	Reporting		Performance	
		Number of reporting sites	# of reports received on Time	No. of HFs Reported regardless of time	Timeliness
Medicair	2	2	2	100%	100%
World Relief	2	2	2	100%	100%
CMD	1	1	1	100%	100%
IOM	12	12	12	100%	100%
RHS	1	1	1	100%	100%
HFO	2	2	2	100%	100%
IMC	6	6	6	100%	100%
GOAL	2	2	2	100%	100%
TADO	2	2	2	100%	100%
HFD	6	6	6	100%	100%
UNIDOR	2	2	2	100%	100%
MSF-E	6	6	6	100%	100%
Medair	2	2	2	100%	100%
IRC	1	1	1	100%	100%
HAA	6	6	6	100%	100%
TRI-SS	2	1	2	50%	100%
MSF-H	5	2	5	40%	100%
SSHCO	1	0	1	0%	100%
ALIMA	3	0	3	0%	100%
UNH	2	0	0	0%	0%
<b>TOTAL</b>	<b>66</b>	<b>56</b>	<b>64</b>	<b>85%</b>	<b>97%</b>

**Completeness was 97% and timeliness was 85% for weekly reporting in week 12, 2021 for partner-supported clinics serving IDP sites.**

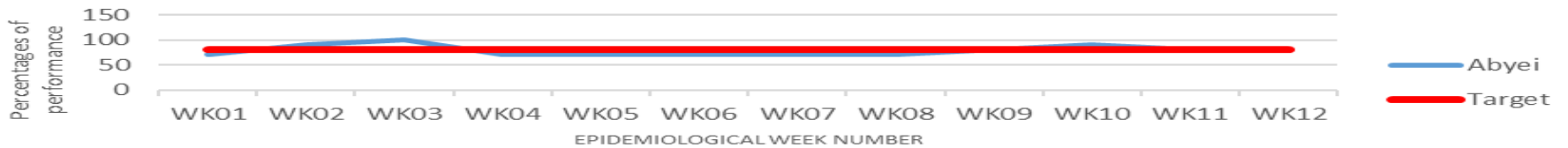
**Graph Showing Counties with inconsistent reporting from week 01 to 12,2021**



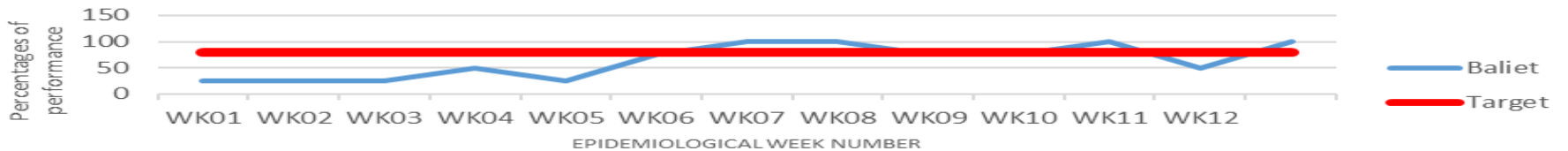
**Graph Showing Counties with inconsistent reporting from week 01 to 12,2021**



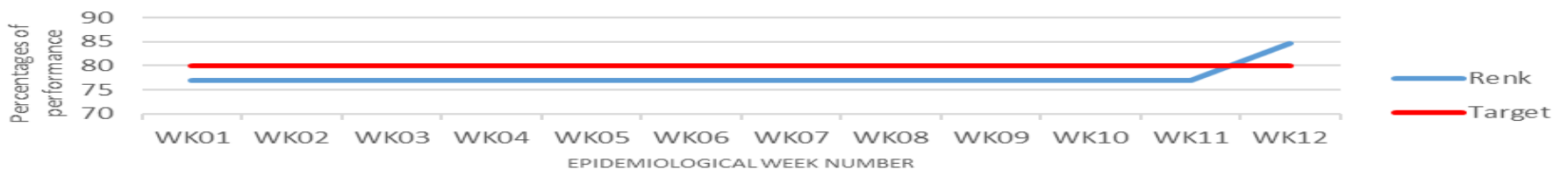
**Graph Showing Counties with inconsistent reporting from week 01 to 12,2021**



**Graph Showing Counties with inconsistent reporting from week 01 to 12,2021**



**Graph Showing Counties with inconsistent reporting from week 01 to 12,2021**





# EVENT-BASED SURVEILLANCE



Alert management including detection; reporting;  
verification; risk assessment; & risk  
characterization





State	Acute jaundice syndrome	Acute Respiratory Infections (ARI)	Acute Watery Diarrhoea	Bloody Diarrhoea	Malaria	Measles	Covid-19	Total alerts
CES		1	3		1			5
EES		1	5	8	3			17
Lakes				1				1
Unity	1		1	5	4	1	2	14
Upper Nile		4	5		4			13
Warrap		1		5			2	8
WBGZ		2	6	3	3	1	2	16
WES		1	12	1	10	1	3	28
<b>Total alerts</b>	<b>1</b>	<b>10</b>	<b>32</b>	<b>23</b>	<b>25</b>	<b>2</b>	<b>9</b>	<b>102</b>

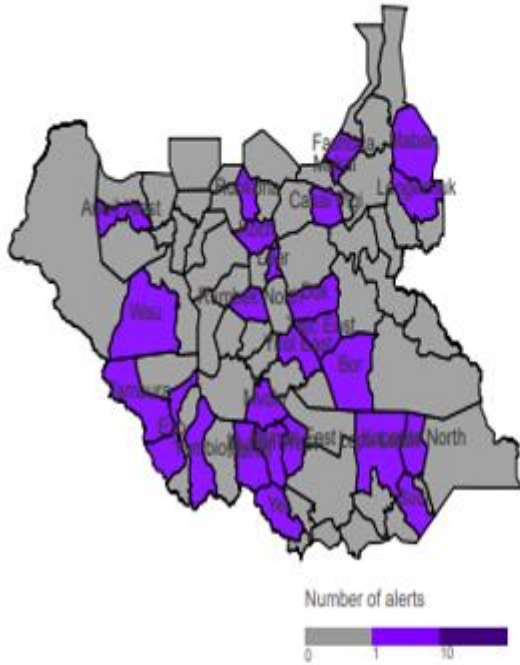
### During this week:

- **10 ARI alerts:** 1 from CES sample was collected and tested positive for COVID-19 , 1 from EES sample was collected and tested Positive for COVID-19 in the state Sentinel Site, 4 from Upper Nile state sample collected and all tested positive for COVID-19, 1 from Warrap state sample collected and tested positive for COVID-19, 2 from WBGZ Sample collected .1 from WES sample collected and tested positive for COVID-19.
- **32 AWD alerts:** 3 from CES ,5 from EES,1 from Unity, 5 from Upper Nile, 6 from WBGZ State, 12 from WES; state RRT have been engaged to verify and collect samples.
- **23 ABD alerts:** 8 from EES,1 from Lakes State, 5 from Unity,5 from Warrap, 3 from WBGZ, 1 from WES; state RRT have been engaged to verify and collect samples.
- **25 Malaria alerts:** 1 from CES, 3 from EES, 4 from Unity, 4 from Upper Nile, 3 from WBGZ, 10 from WES all these are due to the high increase of malaria cases in the Country.
- **1 AJS alert:** 1 from Unity State, reported in an area with confirmed cases of Hepatitis E virus.
- **9 COVID-19 alerts:** 2 from Unity, 2 from Warrap, 2 from WBGZ and 3 from WES all tested positive for COVID-19
- **3 Measles alerts:** 1 from Wau, 1 from Unity State in Bentiu PoC which was reported by the clinician and sample was collected for further investigation and the other 1 is from WES in Tambura Hospital sample collected and sent to National Public Health Lab for investigation.

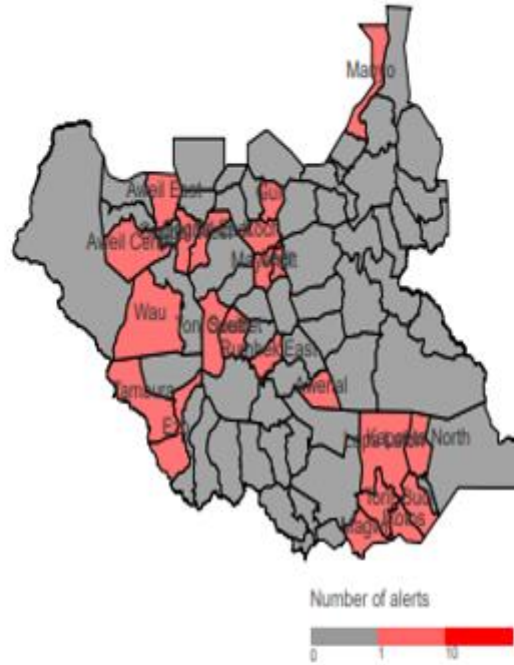
# Alert: Map of key disease alerts by county of week 12 of 2021



Map 2a | Malaria (W12 2021)



Map 2b | Bloody diarrhoea (W12 2021)



Map 2c | Measles (W12 2021)



W12	Cumulative (2021)	
0	5	Low risk
7	7	Medium risk
4	40	High risk
7	31	Very high risk

93%	83%	% verified
0%	0%	% auto-discarded
7%	3%	% risk assessed
0%	2%	% requiring a response

# SUSPECTED OUTBREAKS



Major suspected outbreaks in South Sudan in  
2020





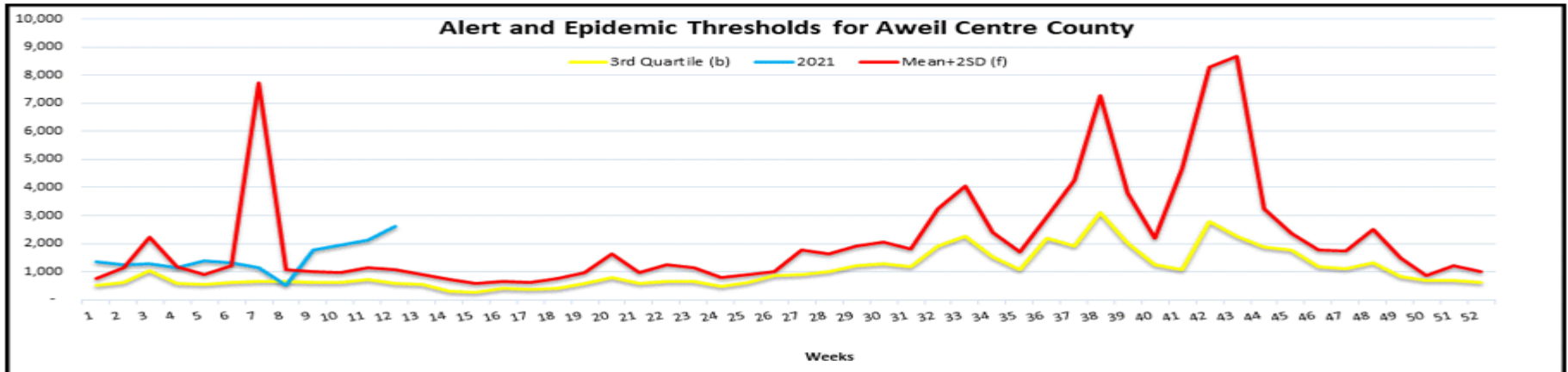
Malaria was the leading cause of morbidity and mortality, accounting for **46.7%** of all morbidities and **85.8%** of all mortalities this week.

There were 2 county with malaria trends that exceeded the threshold (third quartile of trends for the period 2013-2017) and these include the following:

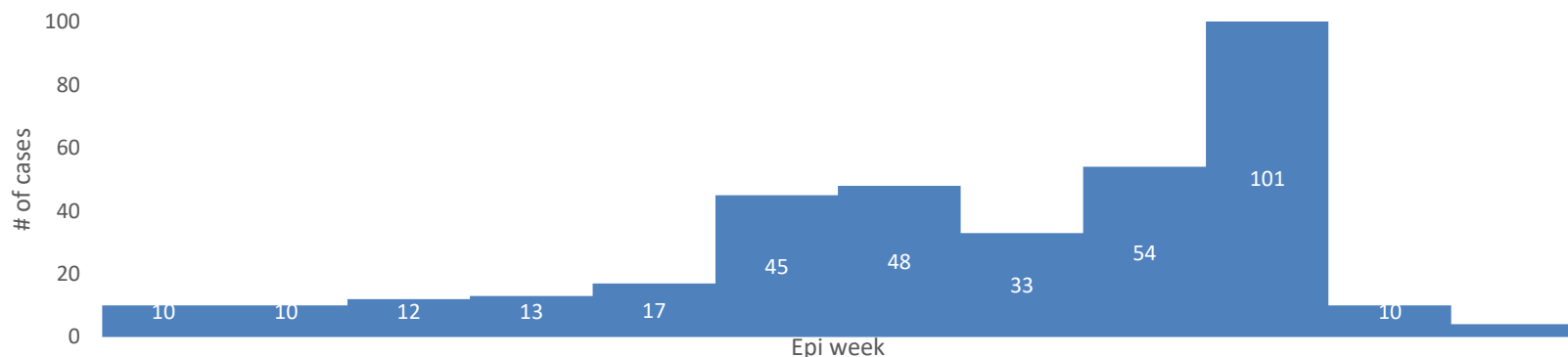
1. **NBGZ State (Aweil Center)**
2. **WBGZ State (Jur River)**

**In the PoC sites;** malaria is one of the top cause of morbidity with respective proportional morbidity reported as **Bentiu (5%); Malakal (44%); Juba (32%)** and **Wau (4%)** PoCs of OPD consultations, respectively.

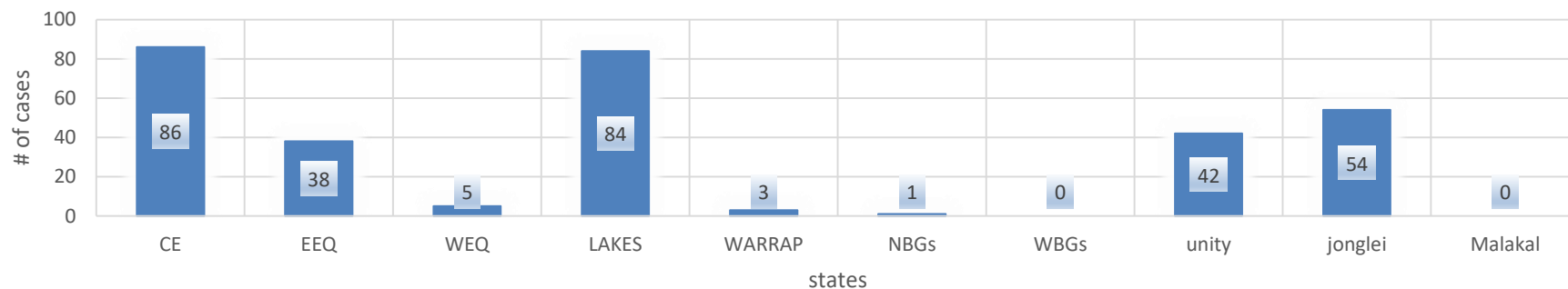
**Aweil Center**



**Covid-19 total confirmed cases in South Sudan from Sentinel sites wk1 to wk 12, 2021**



**# of Covid-19 cases per state in wk 12, 2021 from sentinel sites**



- **There are currently 13 Covid-19 designated sentinel surveillance sites in Juba and States Hospitals that are collecting epidemiological data and samples from Covid-19/ILI/SARI cases. A total of 7671 samples have been collected in 2021 with 527 (6.8%) being positive for COVID-19 from sentinel sites.**

# Guinea Worms Rumors and Suspects by County, Week 11

## Rumors

- 731 rumors were reported.
  - 724 from humans
  - 7 from animals (Dogs)
- 100% of rumors were investigated
  - 100% of rumors (n = 731) were investigated within 24 hours.

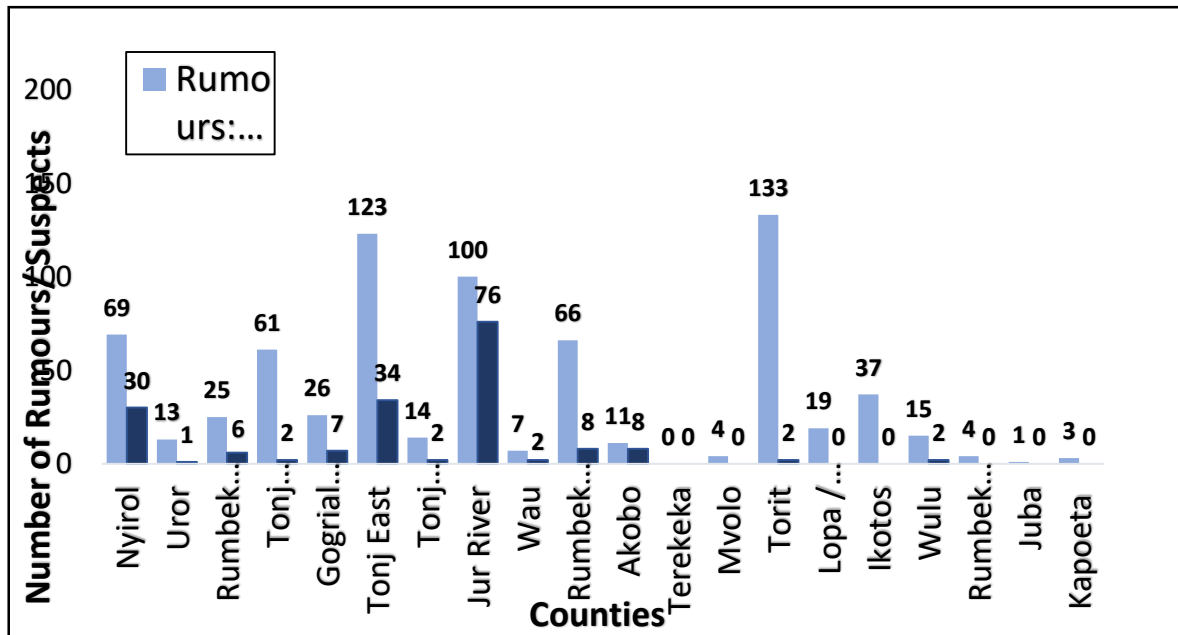
## Reporting Method

All the rumors (n = 731, 100%) were reported through the SSGWEP surveillance structure.

- Self-report: 303
- VV/AS: 150
- FO/PSO: 125
- Other: 153

**Hotline Rumors:** One rumor reported (Juba Na Bari)

**IDSR/EWARS:** No rumors reported through the IDSR/EWARS.



## Suspects:

- 180 suspects were detected.
  - 178 human suspects.
  - 2 animal suspect (All dogs) reported from Udici Payam-Jur River County.
- 25% of the rumors reported were suspects.

# ACTIVE OUTBREAKS AND PUBLIC HEALTH EVENTS



Brief epidemiological description and public health response for active outbreaks and public health events







## Update on floods and response

- To reduce the impact of the predicted flooding in 2021 during the rainy season, rehabilitation of dykes in Bor South and Twic East counties is ongoing. The rehabilitation works on the dykes are expected to be completed by the end of April 2021. Further, prepositioning of critical humanitarian supplies is going on while the roads are still passable.

- Humanitarian responses scale up for locations affected by unseasonal flooding have been recommended. The affected locations include Nyirol (1, 600 people), Fangak (27 000 people in New Fangak and 48 000 people in Old Fangak), Panyikang (24 000 people) and Fashoda (11 000 people).

## Recommendations:

- Partners to update their preparedness and contingency plans for floods and malaria and to preposition supplies.



## Food Insecurity (1)

- The Integrated Food Security Phase Classification (IPC) report released in December 2020 projected that over 810,000 people will be in Crisis or worse levels of food insecurity out of which over 108 000 people will be in IPC Phase 5 catastrophe in the six most affected counties.
- The scaling up of the humanitarian response will continue into the lean season (May-July) during which the rainy season and expected flooding may worsen the situation. The ongoing multisectoral response continues to face multiple access challenges owing to insecurity, limited resources, and limited functional health facilities.

## Health Cluster Response in IPC 5 Counties:

- The humanitarian emergency occasioned by the severe food insecurity has been graded as a Grade 2 event through a grading teleconference call between the WHO country office, regional office and the headquarters.
- Additional resources and support from the regional and headquarters will be availed to the country office to further scale up the ongoing response.
- Efforts by health partners towards ensuring access to health services through both static and mobile are continuing across the six 'Priority 1' counties of Pibor, Akobo, Tonj East, Tonj South, Tonj North, and Aweil South. Over 128 196 consultations have been conducted by health facilities across the six counties since week 01 of 2021.



## Food Insecurity (2)

### Health Cluster Response in IPC 5 Counties:

- Prevention and preparedness to respond to potential infectious disease outbreaks in the severely food insecure and undernourished populations are paramount in averting excess morbidity and mortality during such emergencies. So far oral cholera vaccination campaigns have been done in four locations (Gumuruk, Pibor, Verteth and Lekuangule) in Pibor, Boma county will benefit from the campaign in the coming weeks.
- Further, alert investigation and sample collection and testing for cholera, measles and other epidemic-prone diseases are ongoing.

- The counties have also benefitted from two rounds of polio vaccination campaigns in response to the confirmed vaccine-derived poliovirus outbreak. However, the campaign in Tonj East could not be conducted because of insecurity in the area.
- Efforts towards improving routine immunization coverage are continuing in the IPC 5 priority counties. Aweil South, Tonj North and Tonj South have completed a round of Periodic Intensification of Routine Immunization (PIRI) to augment the routine immunization at the health facilities.
- Resource mobilization is continuing. WHO is supporting emergency partners in the six “Priority 1” counties with 164 interagency health kits (can support 227 000 people), 84 pneumonia kits, 10 severe acute malnutrition with medical complication (SAM/MC) kits, and 21 cholera investigation kits have been delivered to the responding partners.
- Weekly trends of the top infectious diseases are being monitored for potential upsurges and timely investigation.

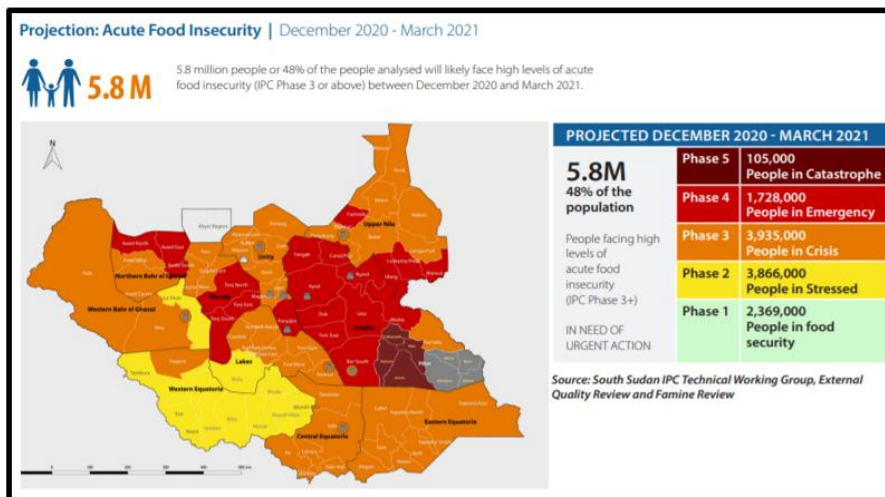


Figure 1: population estimates by IPC Phase and State based on the compilation of the South Sudan IPC Technical Working Group

- ❑ In the week under review, no new circulating Vaccine-Derived Polio Virus, type 2 (cVDPV2) case was reported. However, in the week under review 4 suspected PV2 cases were reported from case and contacts in Upper Nile (1 AFP cases) and Unity state (3 contacts)
- ❑ The number of cases reported cVDPV2 cases as of today remain the same (54) including cVDPV2 cases from contacts (21).
- ❑ This week no new cVDPV2 positive environmental samples were reported and hence the total number of cVDPV2 cases remain 5. The most recent positive environmental sample was collected on 1st December, 2020.
- ❑ The geographical distribution of cVDPV2 cases involves all 10 states in the country and 25 out of 80 counties have reported at least 1 case, with 20% of the cases from Warrap state.
- ❑ All cVDPV2 cases that have been reported so far have dates of onset of paralysis before nationwide campaign in February 2021.
- ❑ The date of onset for the first cases was on 11th June 2020 from Warrap state, while the most recent case was on 25th January from Juba, Central Equatoria state.
- ❑ Clinical and epidemiological investigation is underway for cases classified as compatible and for the new suspected PV2 cases reported in Upper Nil and Unity states..
- ❑ The average administrative coverage for all rounds is at 93.6%, while the average PCE coverage is 90.3 %, however, there is a great disparity among states and counties.



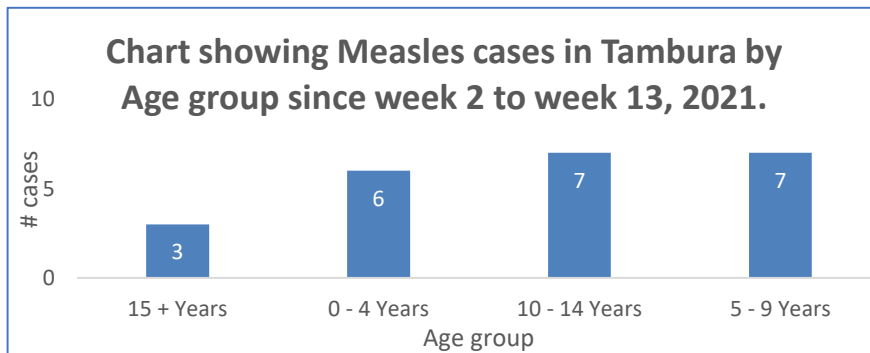
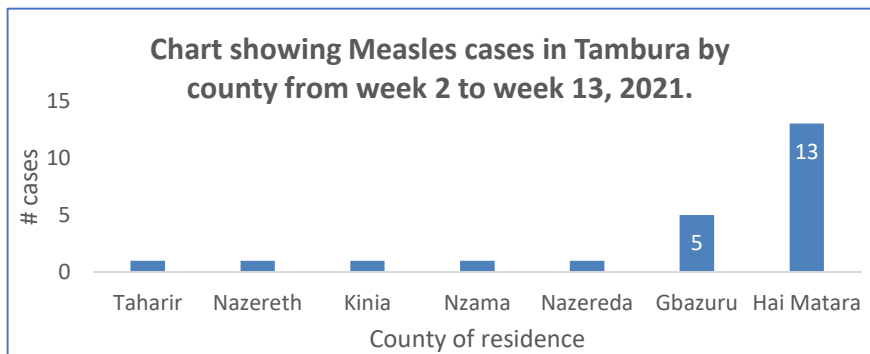
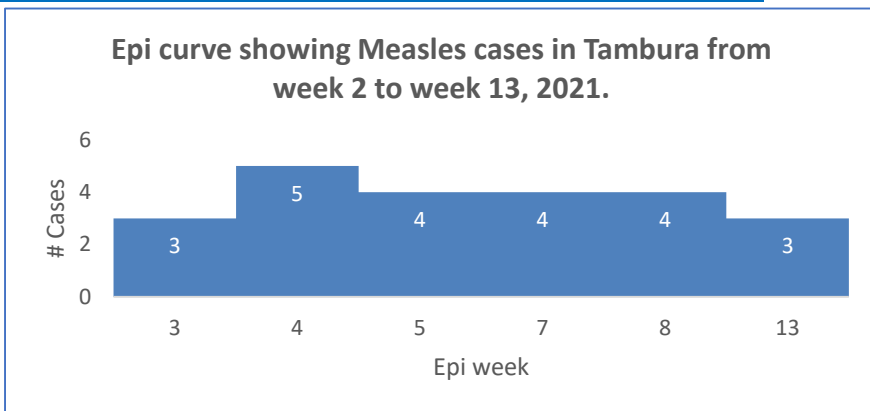


Aetiological agent	Location (county)	Date first reported	New cases since last bulletin	Cumulative cases to date (attack rate %)	Interventions			
					Case management	Vaccination	Health promotion	WASH
<b>Ongoing epidemics</b>								
Hepatitis E	Bentiu PoC	03/01/2018	9	545 (0.016)	Yes	No	Yes	Yes
cVDPV2	25 counties	11/06/2020 18/09/2020	0	54	Yes	Yes	Yes	Yes
Rubella	Tambura	11/1/2021	3	23 (0.13)	Yes	No	Yes	Yes





**Confirmed Rubella outbreak in Tambura County**



**Descriptive epidemiology**

- WES started to report cases of suspected Measles in week 2, 2021. Up to week 10, 2021 a total of 32 cases have been listed.
- 12 samples were collected for testing and only one tested measles IgM positive and **5 samples tested Rubella IgM positive**
- There were **(3)** new case reported in week 13, 2021, total of **23** cases.
- No deaths were reported
- 57% are female and 43% are male.
- Age group 0- 9 years had the most cases with (68%) .
- Most affected area is Hai Matara with 13 cases.

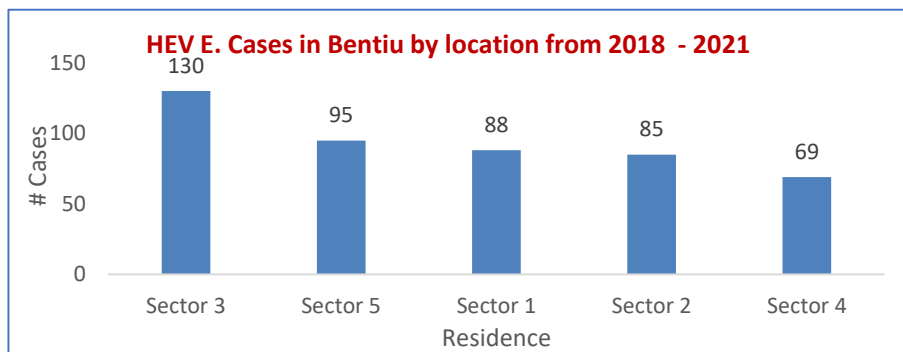
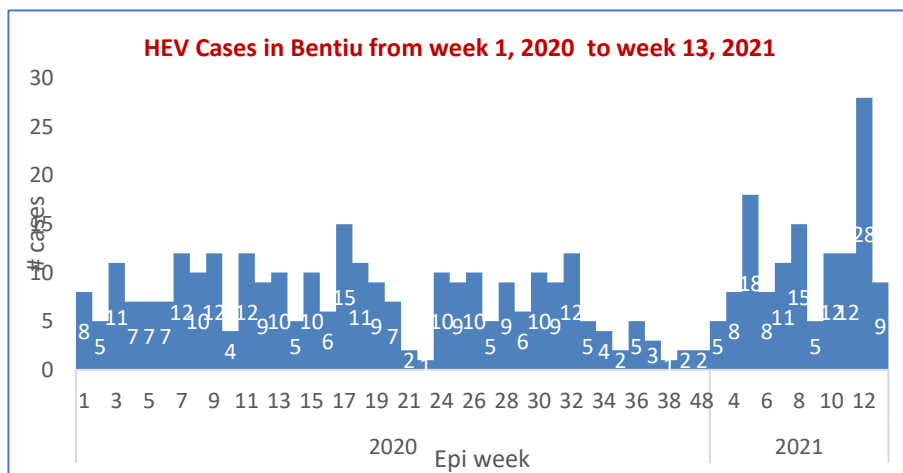
**Response Actions:**

- Surveillance and line-listing are ongoing
- Case management is ongoing
- Active monitoring for occurrence of cases in women of childbearing age.

Age group	Cases	percentage	CUM. %
15 + Years	3	34%	34%
0 - 4 Years	6	34%	69%
10 - 14 Years	7	21%	90%
5 - 9 Years	7	10%	100%
<b>Grand Total</b>	<b>23</b>	<b>100%</b>	



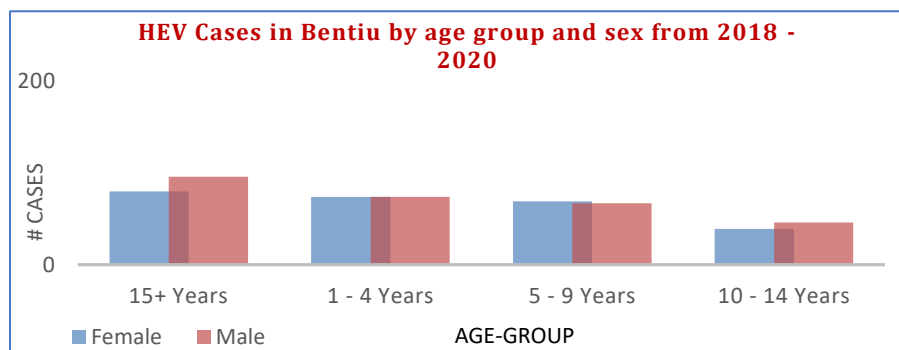
## Hepatitis E, Bentiu PoC (1)



Age-Group	Alive	Dead	Grand Total	Percentage	CFR	Cum. %2
1 - 4 Years	148	0	148	27%	0%	27%
10 - 14 Years	85	0	85	16%	0%	43%
15+ Years	173	3	176	32%	2%	75%
5 - 9 Years	134	2	136	25%	1%	100%
<b>Grand Total</b>	<b>540</b>	<b>5</b>	<b>545</b>	<b>100%</b>	<b>0.01</b>	

### Descriptive epidemiology

- The persistent transmission of HEV in Bentiu PoC continues with **545** cases since beginning of 2019
- There were **(9)** new cases reported in week 13, 2021
- All the cases were managed as outpatient cases except for seven cases who were admitted
- 5 deaths reported in 2019 and 2020
- 48% are female and 52% are male.
- Age group less than 15 years had the most cases with (68%) cases.
- At risk of adverse outcomes when infected in the 3rd trimester of pregnancy
- Use of unsafe drinking water likely to be source of infection
- Up to week 13, 2021; there were 545 cases of HEV in Bentiu PoC including 5 deaths (CFR 0.9%)
- There is an upsurge of HEV cases since the beginning of 2021. **There-fore calls for review to establish and address the WASH gaps.**





### Recommendations

- Supportive case management guided by the HEV protocol is ongoing
- KEV messages on HEV prevention should continue within the community through HPs, CHWs and Kondial Radio
- With current COVID -19 Pandemic Outbreak, WASH partners to increase the coverage of hand washing facilities within the PoCs community.
- Other Wash intervention like increasing the access for clean water and improving the water storage in the affected individuals should be made urgently by distributing the water storage containers that will be the only way to mitigate this problem and stop the HEV outbreak.
- The WASH Cluster/HEV task force should engage in group discussion with Community leaders and woman group at water distribution points to understand their opinions on issue of Collapsing Jerry cans distribution.
- Monitoring the FRC levels at the taps stands in the different sectors, and the concentration of chlorination should maintain at 0.5-1mg/L as the point of collection
- There is an upsurge of HEV cases since the beginning of 2021. This therefore calls for review to establish and address the WASH gaps.



Aetiological agent	Location (county)	Date first reported	New cases since last bulletin	Cumulative cases to date (attack rate %)	Interventions			
					Case management	Vaccination	Health promotion	WASH
<b>Controlled epidemics</b>								
Measles	Juba	21/11/2019	NR	6( 0.1667)	Yes	No	Yes	N/A
Measles	Tonj East	12/12/2019	NR	61(0.98)	yes	Yes	Yes	N/A
Measles	Bor	17/01/2020	NR	14(0.214)	yes	No	yes	N/A
Measles	Jebel Boma	10/12/2019	NR	96(0.063)	yes	No	Yes	N/A
Measles	Kapoeta East	18/01/2020	NR	16(0.625)	yes	No	Yes	N/A
Measles	Aweil East	29/12/2019	NR	664 (0.127)	Yes		No	Yes
Measles	Pibor	27/1/2020	NR	355 (0.0028)	Yes		Yes	Yes
Measles	Wau	5/1/2020	NR	39 (0.051)	Yes		Yes	Yes
Measles	Ibba	25/1/2020	0	55 (0.36)	Yes		Yes	Yes

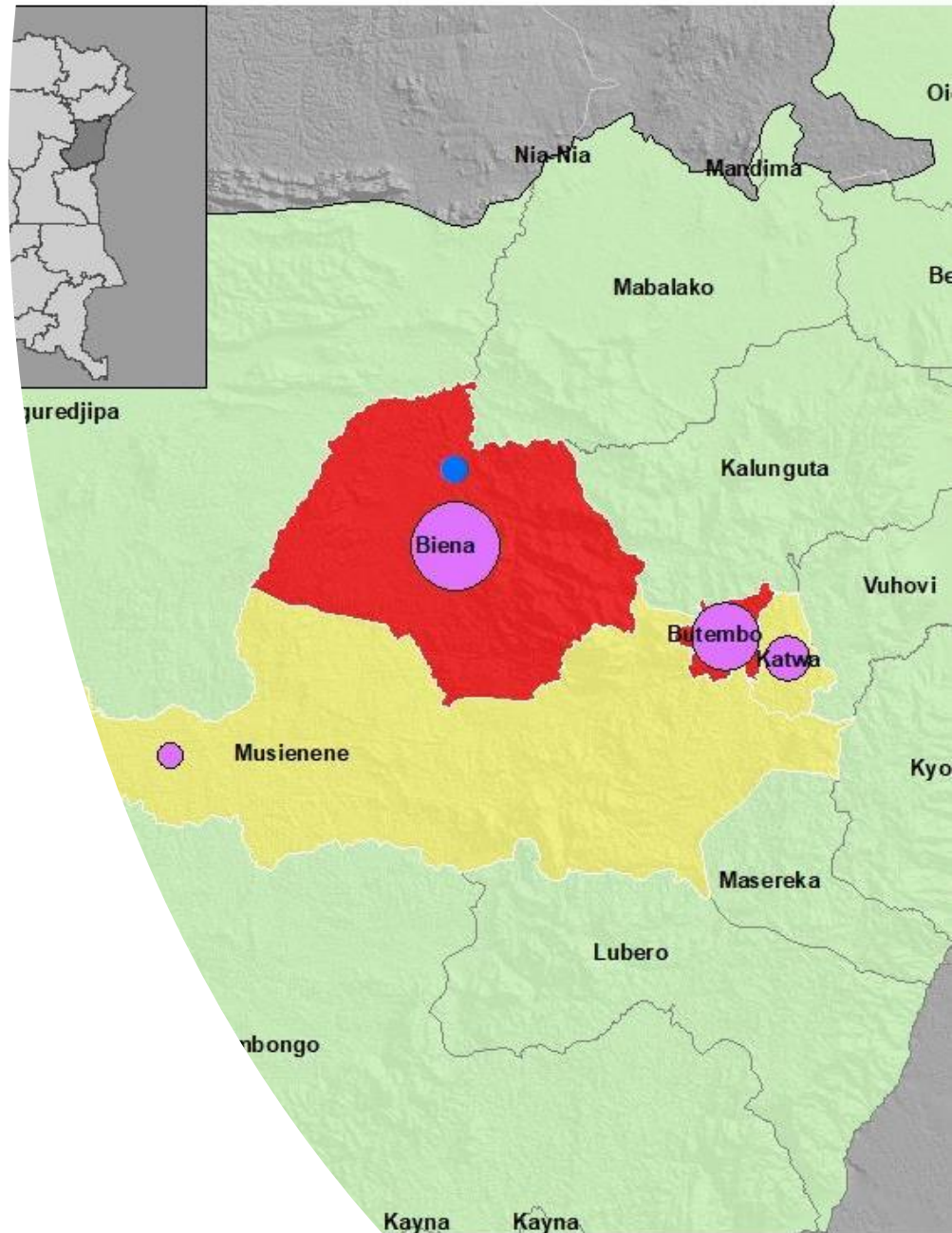


# EBOLA VIRUS DISEASE (EVD)

# DRC, North Kivu EVD Outbreak ( 23<sup>rd</sup> March 2021)

## Cumulative data (23 March 2021)

- Zero confirmed cases reported in past 22 days.
- 42 day countdown commenced on 22 March (D. 41).
- In this outbreak/resurgence, 12 EVD cases were reported (11 confirmed, 1 probable). including 2 health workers, 6 deaths (CFR 50%) and 6 recoveries.
- 16/18 community deaths reported were swabbed and SDB performed.
- 4 HZ affected: Biena, Katwa, Musienene & Butembo.
- 1,763 vaccinated using experimental vaccine rVSV-ZEBOV-GP and 2,233 samples analyzed to date.
- On 23<sup>rd</sup> March, 99% (587/588) of alerts reported and 12% (70) validated.



# EVD Outbreak in Guinea as of 24<sup>th</sup> March 2021

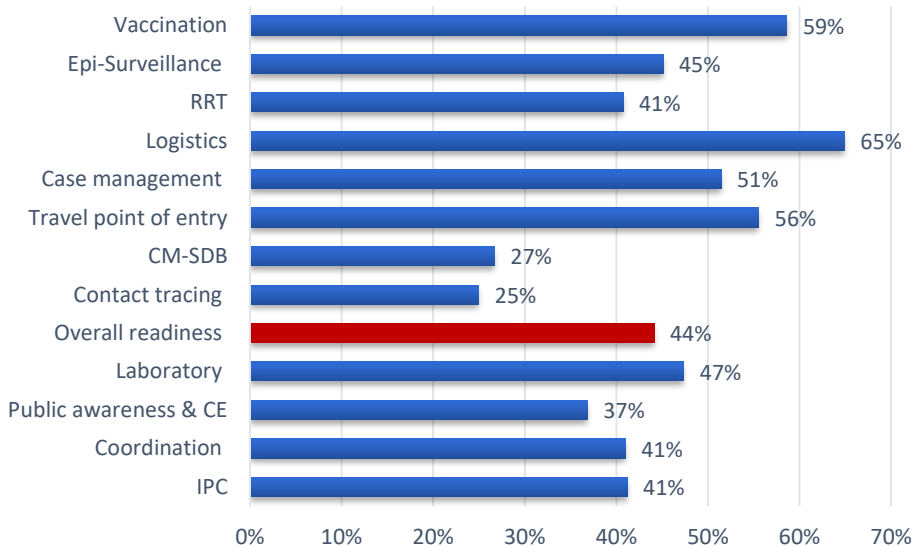
## Cumulative figures – 24th March

- **Zero newly confirmed case** reported since 4<sup>th</sup> March (20 days)
- 42 day countdown commences on 24 March (D. 42)
- **9 contacts lost to follow up have been identified.** All reported to be in good health
- 64% (54/84) of reported alerts investigation
- 18/19 (95%) contacts followed
- **18 total EVD cases reported** (14 confirmed including 9 deaths (5 confirmed & 4 probable), **5 health workers** and 1 traditional practitioner)
- **9 recoveries** reported to date
- **4,225 vaccinated** (288 high-risk contacts, 3495 contacts of contacts and 442 probable contacts) including 1718 frontline workers.



## Level of EVD preparedness

**Baseline EVD Readiness Capacities,  
February 2021**



## What is the next plan for South Sudan?

- Finalized the EVD preparedness checklist
- Finalized the risk assessment
- Finalized the 72 hours plan
- Prioritized activities based on the checklist
- Drafted EVD preparedness operational plan
- Drafted resource mobilization strategy
- Mapped potential donors

# EBOLA VIRUS DISEASE[EVD] PREPAREDNESS IN SOUTH SUDAN



Brief on the Ebola situation in DR Congo and updates on EVD preparedness in South Sudan



# COVID-19 Updates



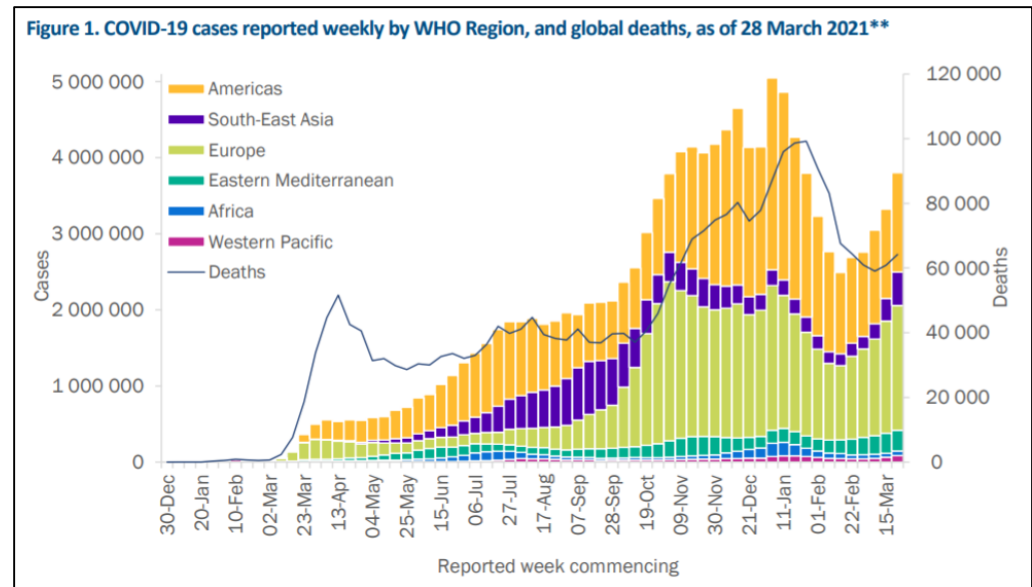


# COVID-19 Virus Situation Summary



Situation update as of 30<sup>th</sup> March, 2020

- The COVID-19 pandemic initial cases were detected in Wuhan China
- Globally **>126 372 442** million cases (**>2 769 696** deaths)
- Africa **>3 061 438** million cases (**>77 446** deaths)



WHO: <https://www.who.int/health-topics/coronavirus>

# COVID-19 Response in South Sudan as of 21<sup>st</sup> March, 2021



- **10,103** confirmed COVID-19 cases in South Sudan; > **85%** in Juba with **109** deaths and a case fatality rate (CFR) of **1.07%**. Total **14,504** contacts identified, quarantined, & undergoing follow up

- Implementation of priorities; risk communication and community engagement; active case search and testing; quarantine for contacts; isolation of confirmed cases, infection prevention and control; and management of cases are currently underway

- The overall response currently led by the COVID-19 National level taskforce, Medical Advisory Panel and the COVID-19 National Steering Committee

- COVID-19 cases have increased since the beginning of 2021. South Sudan is currently experiencing the second wave of COVID-19 transmission with PCR test positivity rates rising from 2.7% in week 1 of 2021 to **4.8%** in week 12 of 2021.

- A monthlong partial lockdown imposed on 3 Feb 2021 that entails a ban on social gatherings, closure of schools and other institutions; entertainment places and limiting the number of passengers in public vehicles.

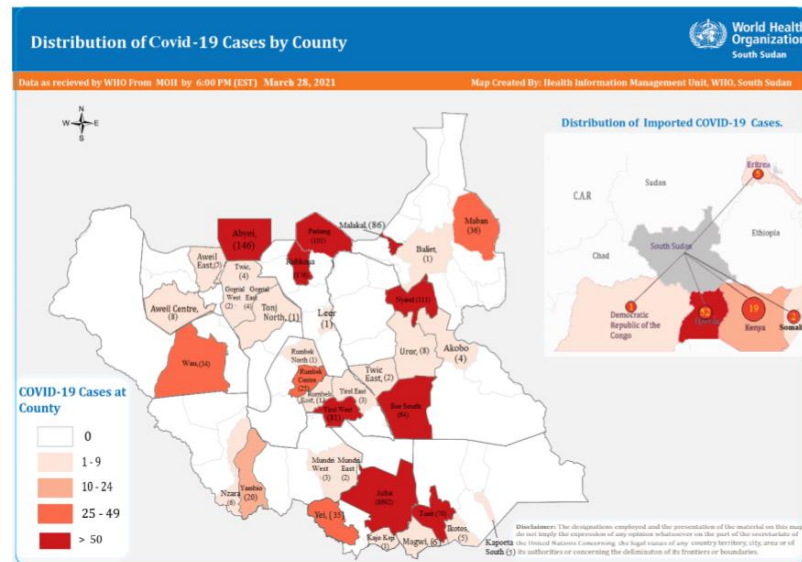


Figure 1. Map of cumulative reported COVID-19 cases, by county

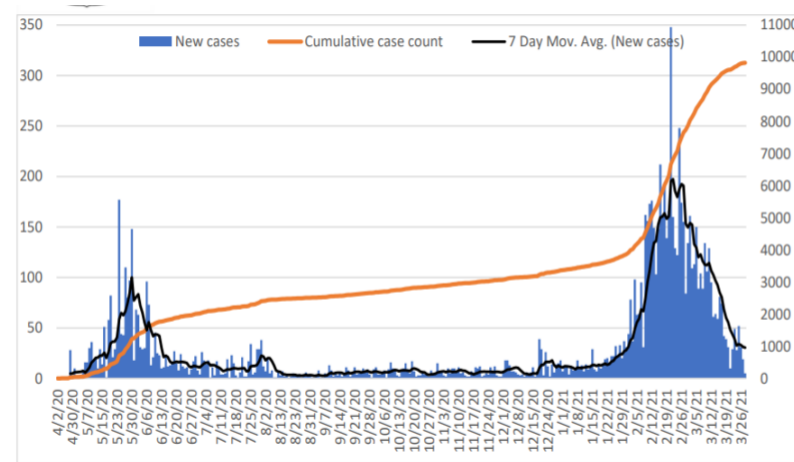


Figure 2. Epidemiological curve of reported cases through Week 12, showing new cases (blue bars), rolling 7-day average of reported cases (black line), and total cumulative reported cases (yellow line)

# Overall Conclusions and Recommendations



## Conclusion

- The overall IDSR and EWARN reporting performance in week 12, 2021 is above the target of 80%. (10) states were above 80%
- **10,103** confirmed COVID-19 cases in South Sudan; >85% in Juba with **106** deaths (CFR of 1.15%). Total **14,506** contacts identified, quarantined, & undergoing follow up
- A total of **2,321** COVID-19 alerts have been investigated with **2,209 (95.2%)** being verified
- With eight outbreaks confirmed in 2020; measles remains the most frequent vaccine preventable disease
- A new rubella outbreak confirmed in Tambura county
- **No** measles outbreak conformed in 2021.
- Given the COVID-19 pandemic, it is critical that measures are stepped up to contain its spread.

## Recommendations

- All partners should support CHDs & State Ministries of Health to undertake IDSR/EWARN reporting
- All health facilities should report, and conduct case-based investigation of suspect measles cases and routine measles immunization should be strengthened in all counties
- Strengthen capacities for COVID-19 containment through identifying and testing suspect cases, isolating confirmed cases, and quarantining contacts



**Thanks to the State Surveillance Officers, County Surveillance Officers and Health Facility in-charges for sharing the weekly IDSR data**

**Thanks to all partners for supporting IDSR weekly reporting and sharing the line lists**

**To access the IDSR bulletins for 2020 use the link below:**

**<https://www.afro.who.int/publications/south-sudan-weekly-disease-surveillance-bulletin-2020>**



# IDSR timeliness & completeness performance at county level for week 12 of 2021 (1)



STATE	COUNTY	SUPPORTING PARTNER	Number of reporting sites	No. of HFs Reported on Time in WK 12	Timeliness Percentage of WK 12	No. of HFs Reported regardless of time in WK 12	Completeness Percentage of WK 12	No. of HFs Reported regardless of time in WK 11	Completeness Percentage of WK 11
Lakes	Averial	Doctors with Africa (CUAMM)	7	7	100%	7	100%	7	100%
Lakes	Yirol West	Doctors with Africa (CUAMM)	12	12	100%	12	100%	12	100%
NBGZ	Aweil South	Malaria Consortium(MC),IHO	9	9	100%	9	100%	9	100%
NBGZ	Aweil Centre	Malaria Consortium(MC)	15	15	100%	15	100%	15	100%
WBGZ	Wau	Cordaid	28	28	100%	28	100%	28	100%
WBGZ	Jur River	Cordaid	35	29	83%	35	100%	35	100%
Lakes	Wulu	Doctors with Africa (CUAMM)	14	11	79%	14	100%	14	100%
Lakes	Cueibet	Doctors with Africa (CUAMM)	15	9	60%	15	100%	15	100%
CES	Kajo Keji	SSUHA,GOAL,TRISS,IJA	17	10	59%	17	100%	17	100%
Lakes	Rumbek East	Doctors with Africa (CUAMM)	24	0	0%	24	100%	24	100%
NBGZ	Aweil East	IRC,TADO	36	34	94%	36	100%	34	94%
CES	Juba	HLSS,SSHCO	46	42	91%	46	100%	45	98%
Lakes	Rumbek North	Doctors with Africa (CUAMM)	7	6	86%	7	100%	6	86%
Lakes	Rumbek Centre	Doctors with Africa (CUAMM)	23	23	100%	23	100%	21	91%
Lakes	Yirol East	Doctors with Africa (CUAMM),LIVEWELL	11	7	64%	11	100%	6	55%
CES	Yei	SSUHA	17	14	82%	16	94%	16	94%
NBGZ	Aweil North	HealthNetTPO,IHO	33	27	82%	30	91%	30	91%
CES	Terekeka	HealthNetTPO	20	17	85%	17	85%	17	85%
NBGZ	Aweil West	HealthNetTPO	37	26	70%	31	84%	32	86%
CES	Morobo	SSUHA,THESO,IJA	5	4	80%	4	80%	4	80%
CES	Lainya	SSUHA	16	12	75%	12	75%	12	75%
WBGZ	Raja	HealthNetTPO,ALIMA	15	0	0%	10	67%	13	87%

STATE	COUNTY	SUPPORTING PARTNER	Number of reporting sites	No. of HFs Reported on Time in WK 12	Timeliness Percentage of WK 12	No. of HFs Reported regardless of time in 12	Completeness Percentage of WK 12	No. of HFs Reported regardless of time in WK 11	Completeness Percentage of WK 11
Jonglei	Fangak	CMD,HFO	17	17	100%	17	100%	17	100%
Jonglei	Pochalla	LIVEWELL	7	7	100%	7	100%	7	100%
EES	Ikotos	HLSS	27	22	81%	27	100%	26	96%
EES	Lopa Lafon	HLSS	18	15	83%	18	100%	11	61%
Jonglei	Canal Pigi	IMC	11	10	91%	11	100%	3	27%
EES	Kapoeta North	CCM	16	13	81%	15	94%	15	94%
Jonglei	Nyirrol	CMA,Malaria Consortium	10	9	90%	9	90%	8	80%
EES	Budi	Cordaid	21	10	48%	19	90%	17	81%
EES	Torit	Cordaid	20	17	85%	17	85%	17	85%
EES	Magwi	HLSS	22	13	59%	18	82%	18	82%
Jonglei	Ayod	CMD,EDA	15	12	80%	12	80%	12	80%
EES	Kapoeta South	CCM	10	8	80%	8	80%	5	50%
Jonglei	Duk	MDM + JDF	15	11	73%	11	73%	11	73%
Jonglei	Twic East	MDM + JDF	11	8	73%	8	73%	0	0%
Jonglei	Pibor	LIVEWELL,CRADA, MEDAIR,CARE	6	3	50%	3	50%	3	50%
Jonglei	Bor	MDM + JDF,ACSO	35	7	20%	19	54%	21	60%
EES	Kapoeta East	CCM	12	2	17%	3	25%	5	42%
Jonglei	Uror	Nile Hope,Malaria Consortium	8	0	0%	2	25%	0	0%
Jonglei	Akobo	Nile Hope,Malaria Consortium,World Relief	8	0	0%	0	0%	0	0%
Warrap	Tonj North	CCM	14	0	0%	0	0%	9	64%

# IDSR timeliness & completeness performance at county level for week 12 of 2021 (2)



STATE	COUNTY	SUPPORTING PARTNER	Number of reporting sites	No. of HF's Reported on Time in WK 12	Timeliness Percentage of WK 12	No. of HF's Reported regardless of time in WK 12	Completeness Percentage of WK 12	No. of HF's Reported regardless of time in WK 11	Completeness Percentage of WK 11
Jonglei	Fangak	CMD,HFO	17	17	100%	17	100%	17	100%
Jonglei	Pochalla	LIVEWELL	7	7	100%	7	100%	7	100%
EES	Ikotos	HLSS	27	22	81%	27	100%	26	96%
Jonglei	Canal Pigi	IMC	11	10	91%	11	100%	3	27%
EES	Lopa Lafon	HLSS	18	15	83%	18	100%	11	61%
EES	Kapoeta North	CCM	16	13	81%	15	94%	15	94%
Jonglei	Nyiroi	CMA,Malaria Consortium	10	9	90%	9	90%	8	80%
EES	Budi	Cordaid	21	10	48%	19	90%	17	81%
EES	Torit	Cordaid	20	17	85%	17	85%	17	85%
EES	Magwi	HLSS	22	13	59%	18	82%	18	82%
Jonglei	Ayod	CMD,EDA	15	12	80%	12	80%	12	80%
EES	Kapoeta South	CCM	10	8	80%	8	80%	5	50%
Jonglei	Duk	MDM + JDF	15	11	73%	11	73%	11	73%
Jonglei	Twic East	MDM + JDF	11	8	73%	8	73%	0	0%
Jonglei	Bor	MDM + JDF,ACSO	35	7	20%	19	54%	21	60%
Jonglei	Pibor	LIVEWELL,CRADA,MED AIR,CARE	6	3	50%	3	50%	3	50%
EES	Kapoeta East	CCM	12	2	17%	3	25%	5	42%
Jonglei	Uror	Nile Hope,Malaria Consortium	8	0	0%	2	25%	0	0%
Jonglei	Akobo	Nile Hope,Malaria Consortium,World Relief	8	0	0%	0	0%	0	0%

STATE	COUNTY	SUPPORTING PARTNER	Number of reporting sites	No. of HF's Reported on Time in WK 12	Timeliness Percentage of WK 12	No. of HF's Reported regardless of time in WK 12	Completeness Percentage of WK 12	No. of HF's Reported regardless of time in WK 11	Completeness Percentage of WK 11
Warrap	Tonj South	CCM	12	12	100%	12	100%	12	100%
Upper Nile	Maryo	CORDAID	10	10	100%	10	100%	10	100%
Upper Nile	Melut	WVI + RI	8	8	100%	8	100%	8	100%
Upper Nile	Panyikang	IMC	4	4	100%	4	100%	4	100%
Upper Nile	Longechuk	RI	9	9	100%	9	100%	9	100%
Upper Nile	Fashoda	CORDAID,HFD	18	13	72%	18	100%	18	100%
Upper Nile	Makal	IMC	7	5	71%	7	100%	7	100%
Warrap	Gogrial East	GOAL	15	0	0%	15	100%	15	100%
Upper Nile	Akoka	IMC	5	5	100%	5	100%	4	80%
Upper Nile	Maiwut	RI	5	4	80%	5	100%	0	0%
Warrap	Gogrial West	GOAL	31	29	94%	29	94%	31	100%
Upper Nile	Renk	WVI + RI	13	1	8%	11	85%	10	77%
Warrap	Tonj East	CCM	12	6	50%	10	83%	12	100%
Warrap	Abyei	AAA,Save the Children,MSF	10	7	70%	8	80%	8	80%
Upper Nile	Ulang	UNKEA,RI,TADO	14	9	64%	11	79%	9	64%
Warrap	Twic	GOAL	26	19	73%	19	73%	12	46%
Upper Nile	Maban	WVI,RI,Samaritans Purse	17	9	53%	11	65%	13	76%
Upper Nile	Baliet	IMC	4	2	50%	2	50%	1	25%
Upper Nile	Luakpiny Nasir	UNKEA,RI	15	4	27%	5	33%	5	33%
Warrap	Tonj North	CCM	14	0	0%	0	0%	9	64%



## This bulletin is produced by the Ministry of Health with Technical support from WHO

For more help and support, please contact:

### Dr. John Rumunu

Director General Preventive Health Services  
Ministry of Health  
Republic of South Sudan  
Telephone: +211924767490  
Email: ori.moiga@gmail.com

### Mr. Angelo Majak Goup

A/Director, Emergency Preparedness and Response  
Ministry of Health, RSS  
Tell: +211929830530  
Emails: majakdegoup99@gmail.com

### IDSR Bulletin Editorial Team

1. Mr. Ajak Ater, MoH - Email: ajakater014@gmail.com
2. Ms. Sheila Baya, WHO - Email: bayas@who.int
3. Mr. Robert Lasu Martin, WHO - Email: lasur@who.int
4. Mrs. Rose Dagama, WHO - Email: dagamaa@who.int
5. Dr. Abraham Adut, WHO - Email: abenegoa@who.int
6. Dr. Alice Igale Lado, WHO - Email: ladua@who.int
7. Dr. Joseph Wamala, WHO - Email: wamalaj@who.int
8. Dr. Argata Guracha Guyo, WHO - Email: guyo@who.int

## Notes

WHO and the Ministry of Health gratefully acknowledge the surveillance officers [at state, county, and health facility levels], health cluster and health pooled fund (HPF) partners who have reported the data used in this bulletin. We would also like to thank ECHO and USAID for providing financial support.

The data has been collected with support from the EWARS project. This is an initiative to strengthen early warning, alert and response in emergencies. It includes an online, desktop and mobile application that can be rapidly configured and deployed in the field. It is designed with frontline users in mind, and built to work in difficult and remote operating environments. This bulletin has been automatically published from the EWARS application.

More information can be found at <http://ewars-project.org>

