



NAMIBIA COVID-19 SITUATION REPORT NO. 520

Outbreak Name	COVID-19 outbreak	Country affected	Namibia
Date & Time	20 August 2021 20h00	Investigation start Date	13 March 2020
Prepared by	Surveillance Team		

HIGHLIGHTS/SITUATION UPDATE (20/08/2021)

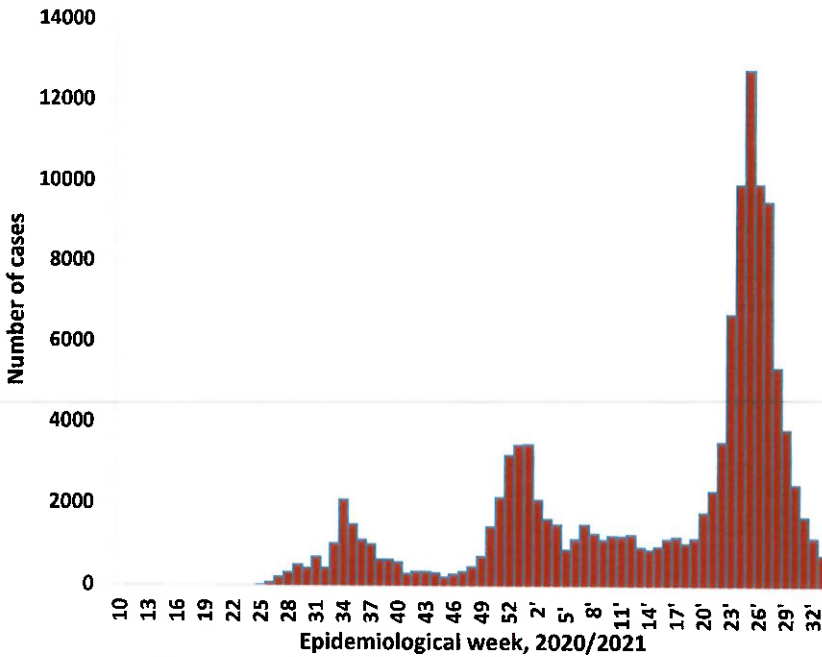
CUMULATIVE	TOTAL TODAY
Tested 646 571	Tested 1 548
Confirmed 123 581	Confirmed 98
Active 2 143	Active 2 143
Recoveries 118 085	Recoveries 743
Vaccinated 1 st doses 200 119 2 nd doses 95 904	Vaccinated 1 st doses 2 276 2 nd doses 2 731
Deaths 3 342	Deaths 9

- A total of **123 581** cases have been recorded to-date, representing **5%** of the total population (**2 550 226**).
- More female cases **65 511 (53%)** have been recorded.
- Of the total confirmed cases, **4 234 (3%)** are Health Workers.
 - 3 518 (83%) State; 708 (17%) Private, 8 (0.2%) Non-Governmental Organizations.
 - 4 157 (98%) recoveries and 25 (0.6%) deaths.
- The recovery rate now stands at **96%**.
- Khomas and Erongo regions reported the highest number of cases with **41 234 (33%)** and **18 031 (15%)** respectively.
- Of the total fatalities, **3 342 (92%)** are COVID-19 deaths while **278 (8%)** are COVID-19 related deaths. The case fatality rate now stands at **2.7%**.

Table 1: Distribution of confirmed COVID-19 cases by region, 20 August 2021

Region	Total cases daily	Total No. of cases	Active cases	Recoveries	Cumulative Deaths	Cumulative deaths with co-morbidities	Non-COVID deaths	Health Workers
Erongo	6	18 031	797	16 828	401	334	5	410
Hardap	8	7 367	79	7 032	256	160	0	122
Karas	23	7 575	134	7 300	141	124	0	230
Kavango East	5	5 406	33	5 196	177	114	0	244
Kavango West	0	586	15	554	17	14	0	38
Khomas	17	41 234	258	40 132	843	658	1	1 481
Kunene	0	3 410	60	3 267	83	68	0	91
Ohangwena	1	4 042	238	3 676	126	81	2	143
Omaheke	24	3 688	29	3 410	249	172	0	119
Omusati	0	5 019	222	4 597	200	121	0	171
Oshana	1	8 732	152	8 263	316	187	1	513
Oshikoto	10	6 485	34	6 289	160	127	2	312
Otjozondjupa	3	9 147	58	8 819	270	185	0	256
Zambezi	0	2 859	34	2 722	103	59	0	104
Total	98	123 581	2 143	118 085	3 342	2 404	11	4 234

EPIDEMIOLOGICAL SITUATION IN NAMIBIA



➤ The highest peak of **12 787 (10%)** cases was recorded during week 25 of 2021 (Figure 1).

➤ After a peak in epi-week 25, the country has seen a gradual reduction in the average number of confirmed cases to 170 in epi-week 32.

➤ The National Call Center continues operations for 24 hours daily.

➤ Today (20/08/2021), **410** calls were answered including **5** alerts.

Figure 1: Epi-curve for confirmed COVID-19 cases, 20 August 2021

Table 2: The current distribution for hospitalization of confirmed cases by region, 20 August 2021

Region	Hospitalized confirmed cases	Intensive Care Unit
Erongo	24	11
Hardap	0	0
Karas	15	0
Kavango East	15	1
Kavango West	3	0
Khomas	39	18
Kunene	18	0
Ohangwena	18	0
Omaheke	1	0
Omusati	17	0
Oshana	39	9
Oshikoto	4	2
Otjozondjupa	12	0
Zambezi	5	0
Total	210	41

➤ Of the total confirmed cases, **74 089 (60%)** are in the 20-49 years age-brackets which constitutes the majority of the recorded cases.

➤ A total of **19 710 (16%)** of the confirmed cases are among the 5-19 years category.

➤ A total of **14 780 (12%)** of the confirmed cases are among the 50 - 59 years group.

➤ The under 5 years age group make up **2 743 (2%)** of the total cases whereas, **12 259 (10%)** are above 60 years of age.

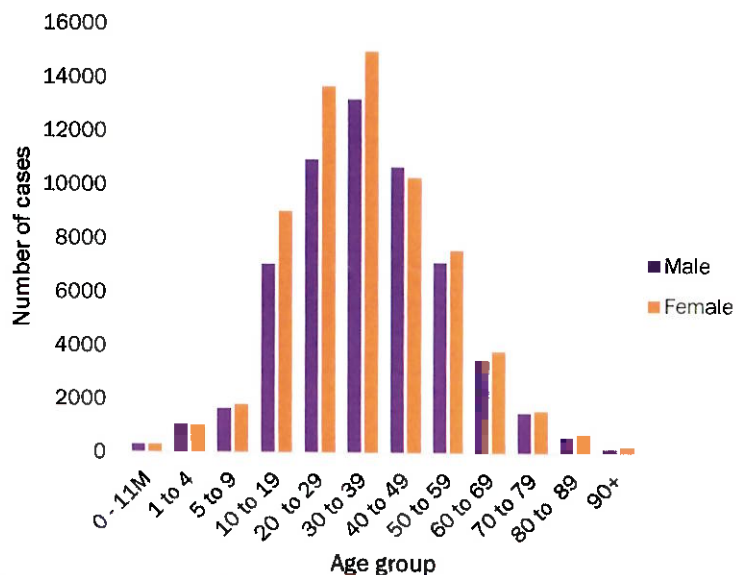


Figure 2: Age and Sex distribution of COVID-19 confirmed cases 20 August 2021

**Table 3: COVID-19 specimen recorded at the Laboratories
20 August 2021**

VARIABLES	TOTAL
Total samples received by the Laboratory	646 688
Total samples tested	632 508
Total samples re-tested	14 063
Total positive results	123 581
Total negative results	508 916
Total samples discarded	117
Invalid results	0
Total pending results	6
Indeterminant/Inconclusive	5
Suspected cases in 24 hours (excluding re-tests)	1 543

- The laboratory testing capacity has been enhanced; with a total of fifteen (15) laboratories carrying out the testing of samples: NIP, Path-Care, UNAM Molecular, Central Veterinary Laboratory, Namib Poultry, NAMDEB, NamPath, Namibia Central Pathology, DiagnoLab, High Care, Alpha Medical Laboratory, Des-Jo Medical Test Centre, ProQuest Diagnostic Laboratory, MAXI and Medlink Laboratory Services.
- To date, **646 571** tests (including **14 063** re-tests) have been conducted by authorized laboratories.
- Since the beginning of the outbreak, **136 484** contacts of confirmed cases have been identified, **514** new contacts were identified within the last 24 hours from 9 regions.
- Cumulatively, **132 871** contacts have completed their monitoring period, while **147** contacts are lost to follow-up and a total of **24 269 (19%)** contacts of confirmed cases have tested positive.
- Today, **1122 (53%)** out of **2 098** active contacts were

Table 4: Number of people in quarantine, 20 August 2021

Region	Newly quarantined 24 hours	Cumulative number	Number discharged	Number in quarantine now
Erongo	0	6 931	6 517	414
Hardap	0	2 824	2 814	10
Kavango (East and West)	0	1 665	1 665	0
Khomas	0	3 689	3 689	0
Kharas	0	9 445	9 303	142
Kunene	0	6 079	5 882	197
Ohangwena	0	695	695	0
Omaheke	0	13 114	12 835	279
Omusati	0	2 541	2 335	206
Oshana	0	400	400	0
Oshikoto	66	21 254	20 937	317
Otjozondjupa	0	1 540	1 540	0
Zambezi	0	1 991	1 824	167
Total	66	72 168	70 436	1 732

- Since March 2020, **72 168** people have been placed into quarantine around the country.
- A total of **1 732** people are currently in quarantine, with **66** new admissions.

Table 5: Summary of COVID-19 vaccine doses administered, 20 August 2021

Region	Cumulative no. of persons vaccinated with doses of Sinopharm and AstraZeneca		Cumulative no. of Healthcare Workers vaccinated with doses of Sinopharm and AstraZeneca	
	1 st doses	2 nd doses	1 st doses	2 nd doses
Erongo	21 025	10 310	907	588
Hardap	12 430	4 324	415	274
Kharas	8 792	4 880	567	265
Kavango East	10 652	4 264	831	409
Kavango West	4 515	2 283	329	205
Khomas	55 930	30 877	3198	1856
Kunene	9 993	3 568	508	332
Ohangwena	12 433	4 698	634	341
Omaheke	8 783	2 960	332	192
Omusati	13 316	5 676	775	438
Oshana	12 480	6 525	1117	712
Oshikoto	10 366	4 756	658	452
Otjozondjupa	15 945	8 588	684	432
Zambezi	3 459	2 195	425	330
Total	200 119	95 904	11380	6826

PUBLIC HEALTH ACTION (S)

- Public Health measures continues to be enforced as the situation is closely monitored.
- The COVID-19 vaccination programme is ongoing throughout the country
- The government and development partners continue to prioritize the continuation of essential health services.

CHALLENGES

- Poor adherence to COVID-19 Infection Prevention and Control (IPC) measures by the general public.

RECOMMENDATIONS

- Continue to give awareness on the importance of adhering to COVID-19 IPC measures; with the involvement of the Security Cluster.

APPROVED





INCIDENT MANAGER
20 AUGUST 2021



SECRETARIAT

For enquiries, please contact
Namibia Public Health Emergency Operations Centre;

 PHEOC@mhss.gov.na

 0800 100 100

 0851 100 100