

South Sudan

Integrated Disease surveillance and response (IDSR)

Epidemiological Bulletin Week 28, 2021 (July 12- July 18)





- In week 28, 2021 IDSR reporting timeliness was 78% and completeness was 88% at health facility level and 79% for EWARS partners supported sites
- Of the 121 alerts in week 28, 2021; 66% were verified 4% were risk assessed and 4% required a response. Malaria (63), AWD (21), ARI (20) and bloody diarrhea (12) were the most frequent alerts in week 28, 2021
- Malaria remains the top cause of morbidity and accounted for 78,091 cases (59.6% of OPD cases)
- A total of 2,841 COVID-19 alerts have been investigated with 2,757 (95.6%) being verified. Total of 10 959 confirmed cases and 117 deaths (CFR of 1.07%)
- Other hazards include floods (unseasonal) in over 4 counties; Malaria in 1 counties, HEV in BentiuPoC.

SURVEILLANCE PERFORMANCE



For the Integrated Disease Surveillance (IDSR)
network and Early warning alert and response
network (EWARN)



IDSR timeliness performance at State level for week 28 & 27 of 2021



Completeness States Ranking	States	Number of reporting sites	No. of HFs Reported on Time in WK 28	Timeliness Percentage of WK 28	No. of HFs Reported on Time in WK 27	Timeliness Percentage of WK 27
1st	WES	213	213	100%	213	100%
2nd	Lakes	113	104	92%	88	78%
3rd	Warrap	123	108	88%	99	80%
4th	NBGZ	133	104	78%	97	73%
5th	Jonglei	108	84	78%	94	87%
6th	Unity	94	71	76%	72	77%
7th	Upper Nile	112	77	69%	68	61%
8th	CES	117	79	68%	100	85%
9th	EES	142	93	65%	85	60%
10th	WBGZ	78	26	33%	38	49%
	South Sudan	1233	959	78%	954	77%

KEY

	<60%	Poor
	61%-79%	Fair
	80%-99%	Good
	100%	Excellent

The timeliness of IDSR reporting (supported by EWARS mobile) at health facility level in week 28 was 76% compared to 85% in week 27. 3 states were above the target of 80%

Reporting challenges: Insecurity, internet access and new partners

IDSR completeness performance at State level for week 28 & 27 of 2021



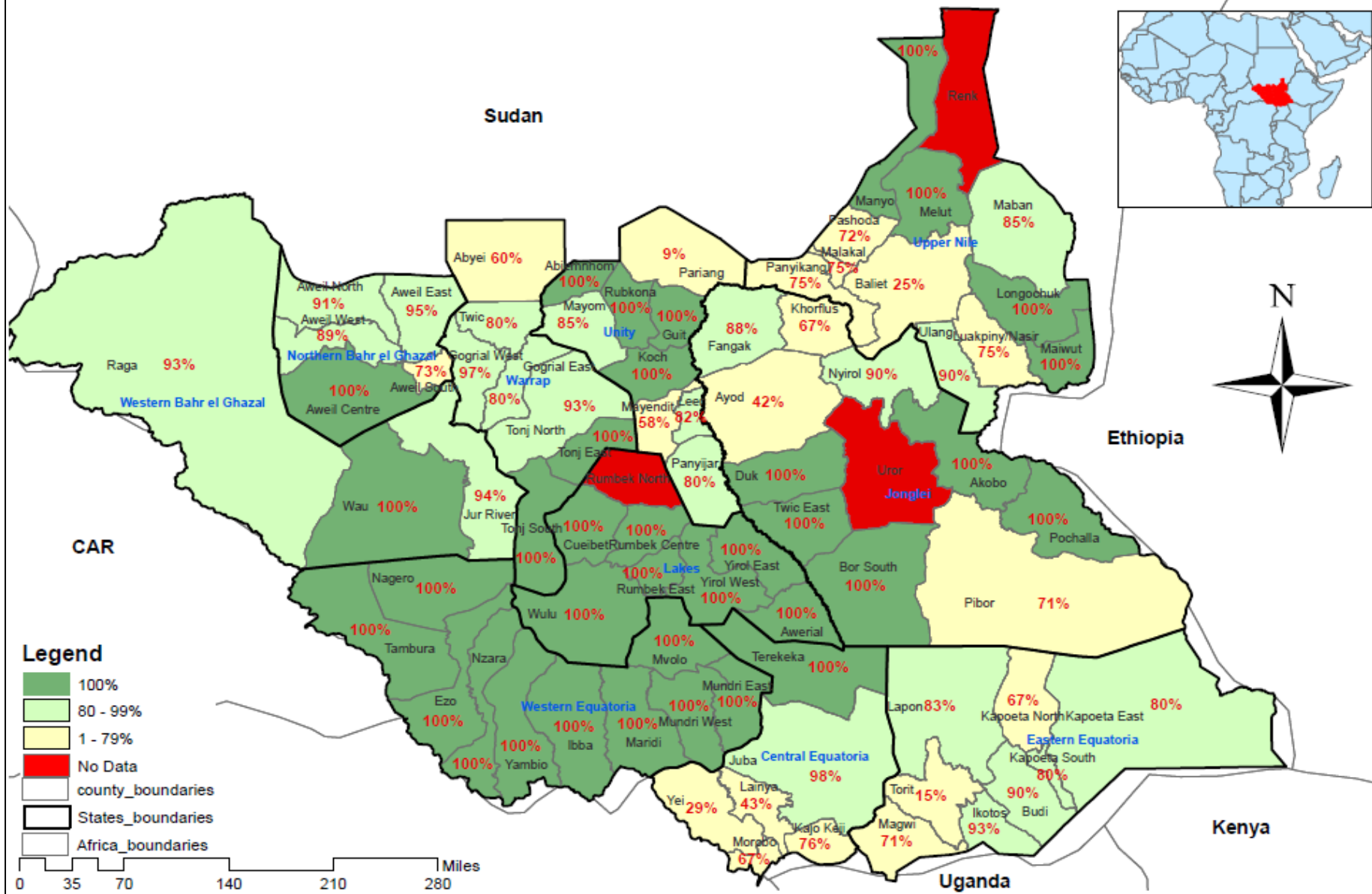
Completeness States Ranking	States	Number of reporting sites	No. of HFs Reported regardless of time in WK 28	Completeness Percentage of WK 28	No. of HFs Reported regardless of time in WK 27	Completeness Percentage of WK 27
5th	WES	213	213	100%	213	100%
4th	WBGZ	78	76	97%	71	91%
1st	Lakes	113	106	94%	113	100%
2nd	NBGZ	133	123	92%	122	92%
7th	Warrap	123	109	89%	114	93%
6th	Jonglei	108	88	81%	96	89%
3rd	Unity	94	75	80%	84	89%
8th	EES	142	113	80%	108	76%
9th	CES	117	92	79%	105	90%
10th	Upper Nile	112	86	77%	88	79%
	South Sudan	1233	1081	88%	1114	90%

KEY

	<60%	Poor
	61%-79%	Fair
	80%-99%	Good
	100%	Excellent

The completeness of IDSR reporting (supported by EWARS mobile) at health facility level was 88% in week 28 compared to 90% in week 27. 6 states were above the target of 80%

Map of South Sudan Showing the Completeness (reporting) by County in week 28, 2021.



Disclaimer: The boundaries and names shown and the designations used on this map do not imply the expression of any opinion whatsoever on the part of the World Health Organization concerning the legal status of any country, territory, city or area or of its authorities, or concerning the delimitation of its frontiers or boundaries.



Surveillance: EWARS timeliness performance indicator by partner for week 28 and 27 of 2021

Partner	HF's	Reporting	Performance		
PARTER	Number of reporting sites	# of reports received on Time in Week 28	Timeliness of Week 28	# of reports received on Time in Week 27	Timeliness of Week 27
World Relief	2	2	100%	2	100%
ALIMA	3	3	100%	3	100%
CMD	1	1	100%	1	100%
IHO	2	2	100%	2	100%
IRC	1	1	100%	1	100%
SSHCO	1	1	100%	1	100%
HFO	2	2	100%	2	100%
UNH	2	2	100%	2	100%
IOM	12	12	100%	12	100%
TRI-SS	2	2	100%	2	100%
RHS	1	0	0%	1	100%
MSF-E	6	4	67%	6	100%
HFD	6	6	100%	6	100%
UNIDOR	2	2	100%	2	100%
IMC	24	20	83%	23	96%
TADO	6	4	67%	4	67%
MSF-H	7	3	43%	3	43%
Medair	4	0	0%	0	0%
GOAL	2	0	0%	0	0%
TOTAL	86	67	78%	73	85%

Timeliness for EWARS partners supported sites were at 78% in week 28, 2021 compared to 85% at week 27, 2021



Surveillance: EWARS completeness performance indicator by partner for week 28 and 27

Partner	HFs	Reporting	Performance		
PARTER	Number of reporting sites	# of reports received regardless of Time in Week 28	Completeness of Week 28	# of reports received regardless of Time in Week 27	Completeness of Week 27
World Relief	2	2	100%	2	100%
ALIMA	3	3	100%	3	100%
CMD	1	1	100%	1	100%
IHO	2	2	100%	2	100%
IRC	1	1	100%	1	100%
IOM	12	12	100%	12	100%
TRI-SS	2	2	100%	2	100%
RHS	1	1	100%	1	100%
MSF-E	6	6	100%	6	100%
HFD	6	6	100%	6	100%
UNIDOR	2	2	100%	2	100%
IMC	24	20	83%	23	96%
HFO	3	2	67%	2	67%
TADO	6	4	67%	4	67%
UNH	4	2	50%	2	50%
MSF-H	7	3	43%	3	43%
Medair	4	1	25%	0	0%
SSHCO	1	0	0%	1	100%
GOAL	2	0	0%	0	0%
TOTAL	89	70	79%	73	82%

Completeness for EWARS partners supported sites was at 79% in week 28, 2021 compared to 70% at week 27, 2021

EVENT-BASED SURVEILLANCE



Alert management including detection; reporting;
verification; risk assessment; & risk
characterization





State	Acute jaundice syndrome	Acute Respiratory Infections (ARI)	Acute Watery Diarrhoea	Bloody Diarrhoea	Malaria	Guinea Worm	Covid-19	Total alerts
CES		4	2	2	1			9
EES			4	3	2			9
Lakes		6	4	1	4			15
Unity	1	2		3	11		2	19
Upper Nile		5	4		4	1		14
Warrap			4		9		1	14
WBGZ		3	3	1	2			9
WES				2	30			32
Total alerts	1	20	21	12	63	1	3	121

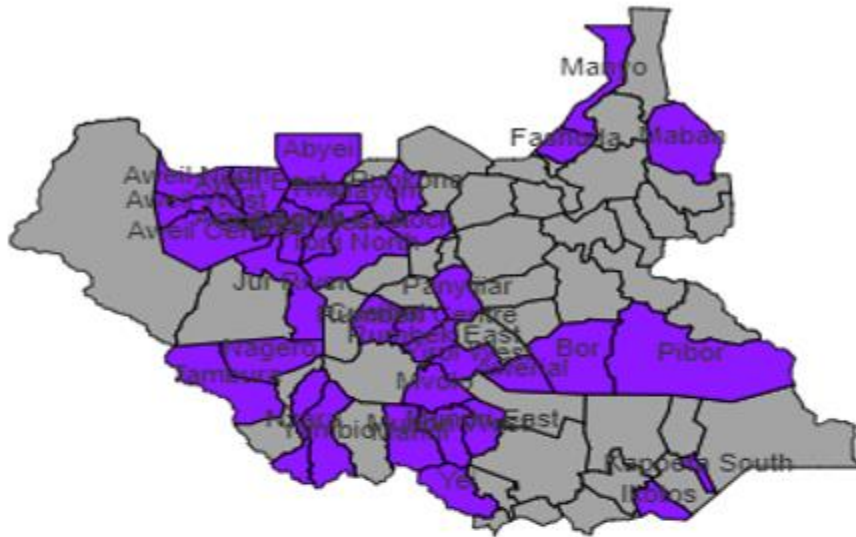
During this week:

- **20 ARI alert:** 4 from CES , Juba County, Pager PHCC, 2 from Unity State, 6 from Lake State, Rumbek East County, Bar-liap PHCU, Awerial County, Door PHCU, Abuyong PHCU, 5 from Upper Nile, Manyo County, Thworgang phcu, Fashoda County, HFD Kalagang PHCU; Lul West PHCC, 3 from WBGZ, Wau County in Hai Dinka PHCC
- **21 AWD alert:** 2 from CES, 4 from EES, treated for diarrhea , 4 from Lake State, 4 from Upper Nile State treated for diarrhea, 4 from Warrap State , 3 from WBGZ State.
- **12 ABD alert:** 2 from CES, 3 from EES patients given treatment, 1 from Lakes State, 3 from Unity investigated, 1 from WBGZ investigation under way,, 2 from WES State.
- **63 Malaria alerts:** 1 from CES, 2 from EES, 4 from Lakes State, 11 from Unity, 4 from Upper Nile State, 9 from Warrap State, 2 from WBGZ, 30 from WES , all these are due to the high increase of malaria cases in the Country.
- **1 AJS alert:** This alert is from Unity State, Rubkona County, MSF-H Bentiu PoC Hospital where there is a confirmed outbreak.
- **3 COVID-19 alert:** 2 from Unity State, 1 from Warrap State, Abyei County, Juljok MSF Hospital the alert was investigated and screened.
- **1 Guinea Worm alert:** this alert is from upper Nile State, Fashoda County, Bol PHCU

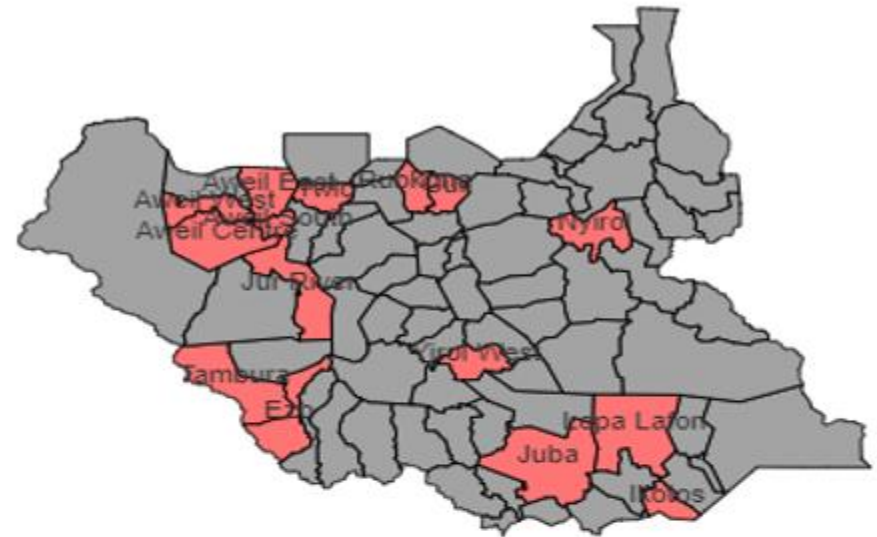
Alert: Map of key disease alerts by county of week 28 of 2021



Map 2a | Malaria (W28 2021)



Map 2b | Bloody diarrhoea (W28 2021)



W28	Cumulative (2021)	
0	9	Low risk
8	8	Medium risk
0	51	High risk
8	140	Very high risk

66%	88%	% verified
0%	0%	% auto-discarded
4%	4%	% risk assessed
4%	3%	% requiring a response



Yei River County Hospital admitted an 18 months old child from Meri Refugees Camp/ Democratic Republic of Congo on 13th July, 2021.

On 21th July the child developed bleeding from nose and ears, bloody urine and abdominal pain.

Yei county RRT were deployed, and investigation was done

Response actions:

- Samples collected and were shipped to Juba; result was negative for Ebola and Marbug
- Patient was Isolated and under monitoring
- Active case search ongoing

SUSPECTED OUTBREAKS



Major suspected outbreaks in South Sudan in
2020



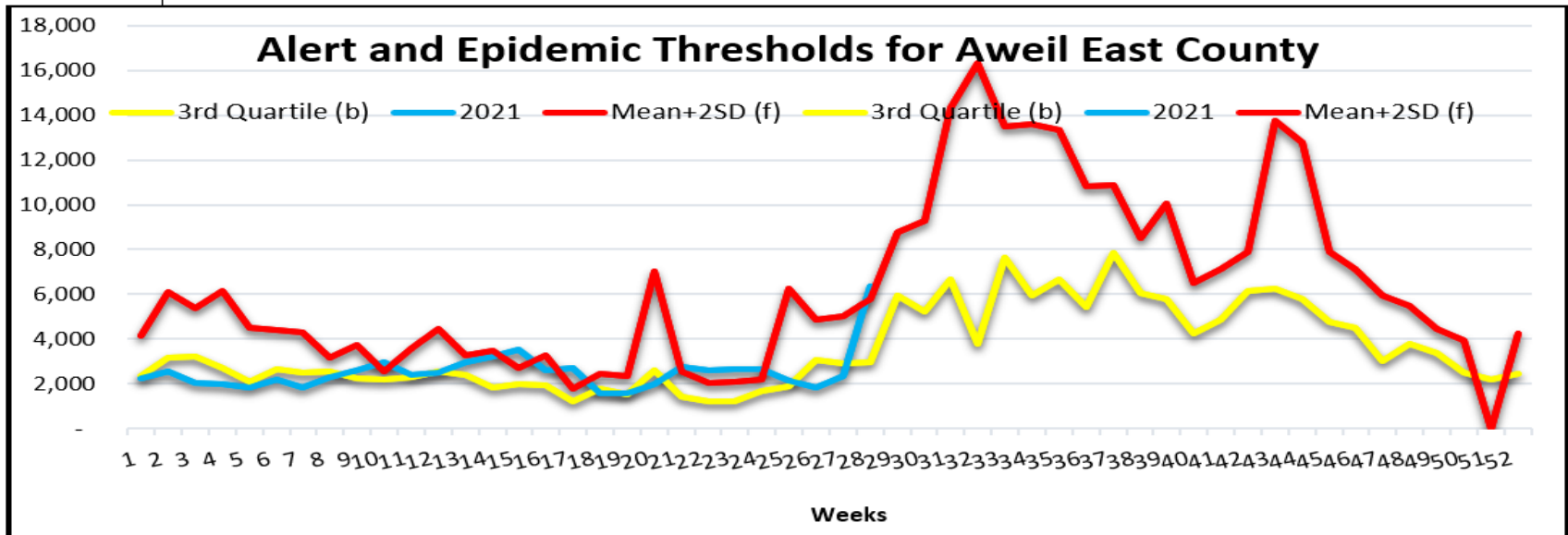


Malaria was the leading cause of morbidity and mortality, accounting for **59.6%** of all morbidities and **27.1%** of all Mortalities this week 21.

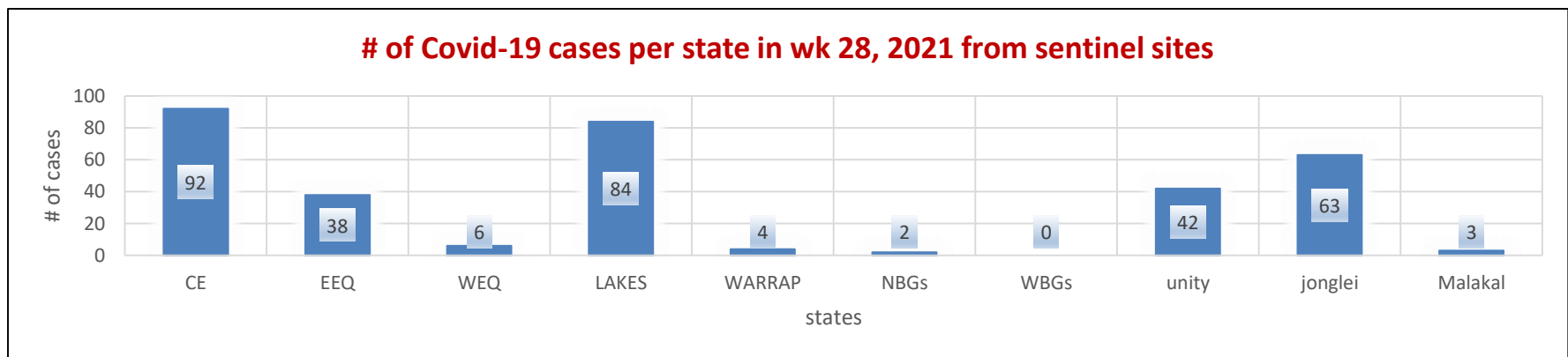
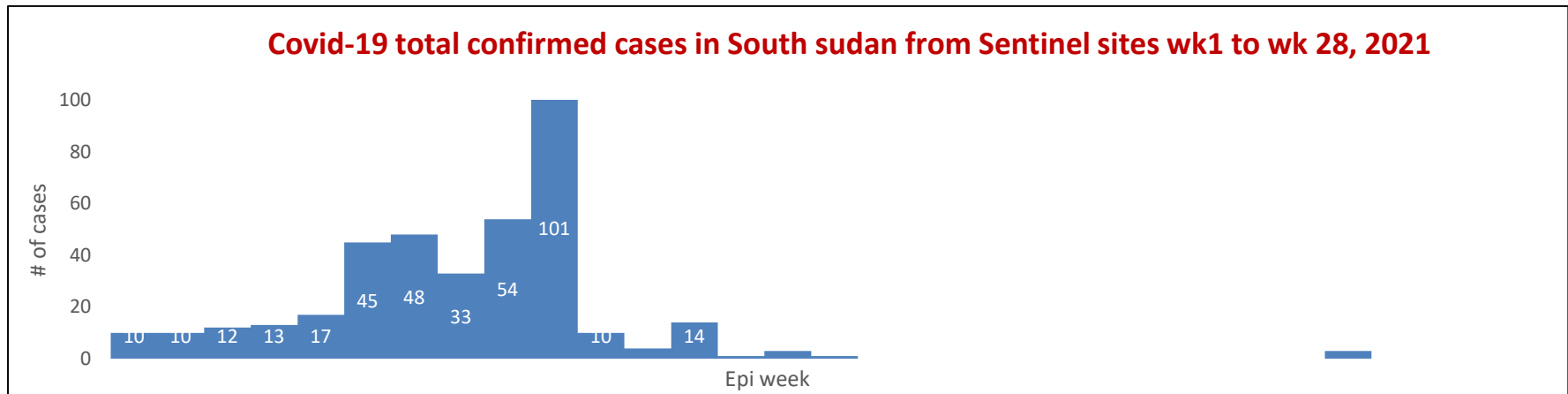
One Counties with malaria trends which have exceeded the threshold (third quartile of trends for the period 2013-2017)

1. NBGZ State (Aweil East)

Aweil East



Routine Sentinel Surveillance | Human Influenza



- As of 28th April 2021, a total of 138 samples were collected from three sentinel sites in Juba with 131 samples testing negative for influenza; one (1) positive for COVID-19; and six (6) positive for influenza B (with four (4) sub-typed as Victoria while the other two (2) are pending sub-typing)
- There are currently 13 Covid-19 designated sentinel surveillance sites in Juba and States Hospitals that are collecting epidemiological data and samples from Covid-19/ILI/SARI cases. A total of 7718 samples have been collected in 2021 with 549 (7.1%) being positive for COVID-19 from sentinel sites.

ACTIVE OUTBREAKS AND PUBLIC HEALTH EVENTS



Brief epidemiological description and public health response for active outbreaks and public health events`





Preparedness for the flooding season

- South Sudan is expected to face another severe flooding season in 2021 for the third consecutive year. The severe flooding seasons in 2019 and 2020 affected over one million people across many counties.
- The government ministries and partners continue to undertake mitigation measures in readiness for the upcoming flooding season including:
 - Rehabilitation of the damaged dykes in Bor South and Twic East counties.
 - Monitoring of the rainfall forecast to enable the provision of early warning signals. Moderate rainfall (50 - 100 mm) is expected over much of South Sudan during 27 July -3 August 2021.
 - Updating of flooding preparedness and contingency plans and prepositioning of essential supplies including emergency health kits
- Flooding has affected some 21 000 people in Old Fangak County in Jonglei, and some 3 000 people in Guit County, Unity in June 2021.



Updates on Public Health Response

- The humanitarian situation in South Sudan deteriorated in the first of 2021. The Integrated Food Security Phase Classification (IPC) report released in December 2020 projected that 7.2 million people will face high levels of acute (IPC Phase 3+) food insecurity during April-July 2021.
- In the six most affected counties, some 820 000 people were projected to face a crisis or worse levels of food insecurity while over 108 000 people were projected to be in IPC Phase 5 catastrophe during the lean season.
- The multi-sectoral response aimed at scaling up access to life-saving food security and livelihood, health and nutrition, protection and WASH services and assistance has been underway in the prioritized six counties since December 2020.
- WHO and Health Cluster partners aim at reducing preventable mortality and morbidity by scaling up access to basic health and nutrition services, enhancing capacities of disease surveillance, prevention, detection and response to infectious disease outbreaks, and building resilience of the health system.

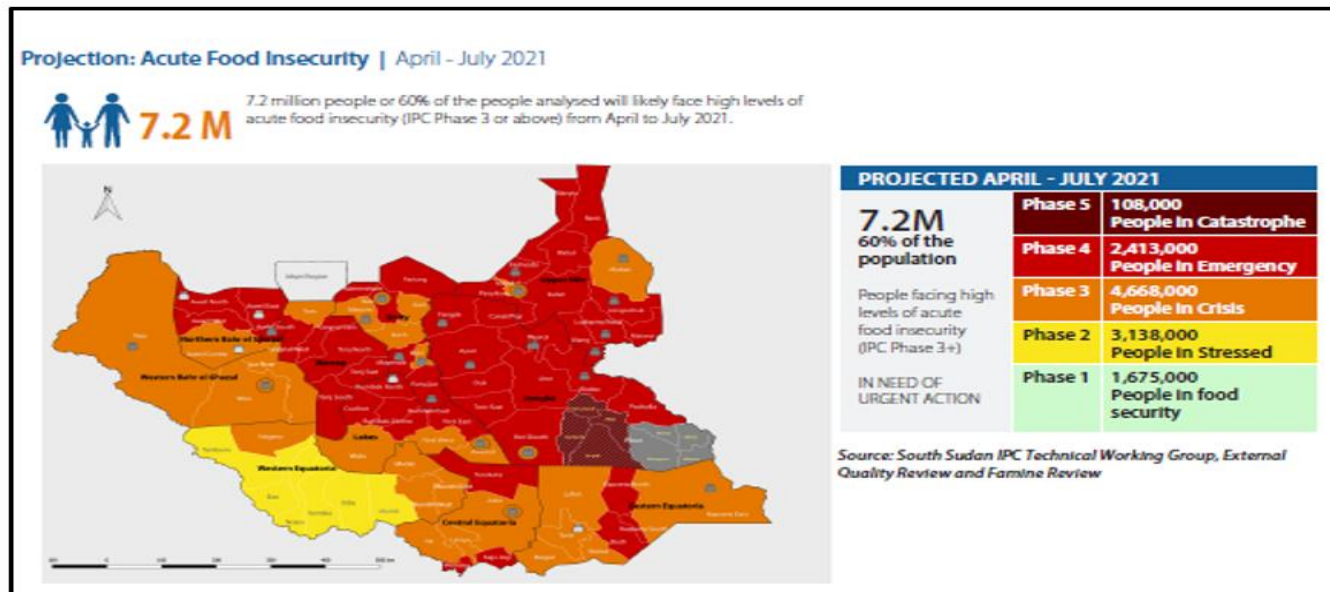


Figure 1: population estimates by IPC Phase and State based on the compilation of the South Sudan IPC Technical Working Group

- Increased looting of supplies and sustained sub-national violence in Greater Tonj and GPAA, and threats and attacks on humanitarians by youths in several locations impeded humanitarian operations.
- The most recent incident of sub-national violence occurred on 8-9 July 2021 in Tonj North resulting in the displacement of >5 000 people, killing of 14 people and burning of 140 shelters. Health facilities, schools and a UN warehouse containing aid food were vandalized and looted.

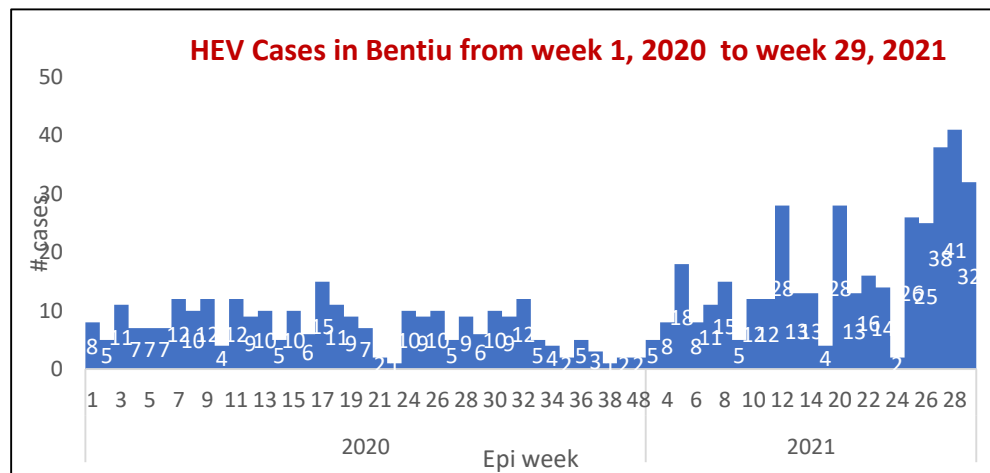


Aetiological agent	Location (county)	Date first reported	New cases since last bulletin	Cumulative cases to date (attack rate %)	Interventions			
					Case management	Vaccination	Health promotion	WASH
Ongoing epidemics								
Hepatitis E	Bentiu PoC	03/01/2018	14	631 (0.022)	Yes	No	Yes	Yes
COVID-19	35 counties	05/4/2020		10,855	yes	yes	yes	yes
cVDPV2	25 counties	11/06/2020 18/09/2020	0	54	Yes	Yes	Yes	Yes
Rubella	Tambura	11/1/2021	0	23 (0.13)	Yes	No	Yes	Yes
Rubella	Nagero	01/03/ 20201	0	5 (0.25)	Yes	No	Yes	N/A





Hepatitis E, Bentiu IDP camp (1)



Age-Group	Alive	Dead	Grand Total	Percentage	CFR	Cum. %2
1 - 4 Years	226	0	226	28%	0%	28%
10 - 14 Years	114	0	114	14%	0%	42%
15+ Years	280	3	283	35%	1%	78%
5 - 9 Years	176	2	178	22%	1%	100%
Grand Total	796	5	801	100%	0.01	

Descriptive epidemiology

- The persistent transmission of HEV in Bentiu IDP camp continues with **801** cases since beginning of 2019
- There were (**31**) new cases reported in week 29, 2021
- All the cases were managed as outpatient cases except for seven cases who were admitted
- 5 deaths reported in 2019 and 2020
- 52% are female and 48% are male.
- Age group less than 15 years had the most cases with (72%) cases.
- There is risk of adverse outcomes women are infected in their last trimester
- Use of unsafe drinking water is likely to be source of infection
- Up to week 29, 2021; a cumulative of 801 cases of HEV in Bentiu IDP camp including 5 deaths (CFR 0.62%)
- There is an upsurge of HEV cases since the beginning of 2021. The upsurge is attributed to declining WASH in the IDP camp as the daily workers and hygiene promoters have not been working for months now amidst reduced funding for WASH activities in IDP camp.

Public health response

- Given the current HEV upsurge in Bentiu IDP camp, the WASH cluster in Juba working with the local WASH implementing partners – Concern Worldwide; Mercy Corps; and IOM have agreed to undertake the following interventions:
 - Intensify Hygiene promotion messaging prioritizing the most affected sectors. Many of the daily workers stopped working for quite some time including Hygiene Promoters hence orientation of HPs will be intensified
 - Provide WASH NFIs (soap, buckets for water storage and handling)
 - Intensify water quality monitoring at source and point of use and adjust chlorine dosage accordingly to maintain FRC levels at 0.5-1mg/L as the point of collection
- Partners, - WHO and MSF in support of the MoH are exploring the feasibility of deploying HEV vaccines as an additional outbreak response tool to interrupt transmission



Aetiological agent	Location (county)	Date first reported	New cases since last bulletin	Cumulative cases to date (attack rate %)	Interventions			
					Case management	Vaccination	Health promotion	WASH
Controlled epidemics								
Measles	Juba	21/11/2019	NR	6(0.1667)	Yes	No	Yes	N/A
Measles	Tonj East	12/12/2019	NR	61(0.98)	yes	Yes	Yes	N/A
Measles	Bor	17/01/2020	NR	14(0.214)	yes	No	yes	N/A
Measles	Jebel Boma	10/12/2019	NR	96(0.063)	yes	No	Yes	N/A
Measles	Kapoeta East	18/01/2020	NR	16(0.625)	yes	No	Yes	N/A
Measles	Aweil East	29/12/2019	NR	664 (0.127)	Yes		No	Yes
Measles	Pibor	27/1/2020	NR	355 (0.0028)	Yes		Yes	Yes
Measles	Wau	5/1/2020	NR	39 (0.051)	Yes		Yes	Yes
Measles	Ibba	25/1/2020	0	55 (0.36)	Yes		Yes	Yes



COVID-19 Updates



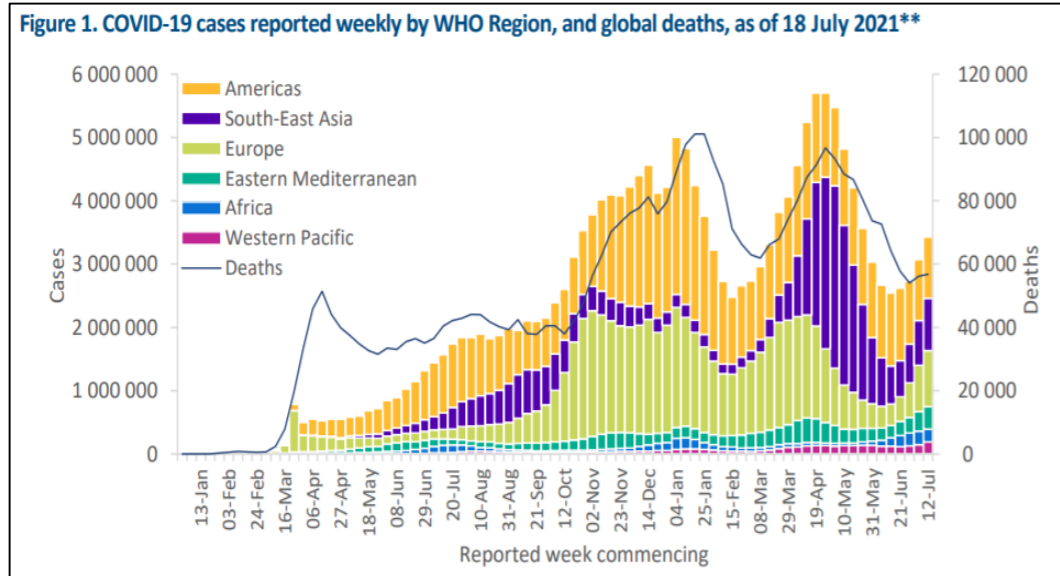
COVID-19 Virus Situation Summary



Situation update as of 20 July 2021

- Globally, 20 July 2021, there have been **190 169 833 confirmed cases** of COVID-19, including **4 086 000 deaths**, reported to WHO. As of **26 July 2021**, a total of **3,696,135,440 vaccine doses** have been administered.

- In Africa, as of **20 July 2021**, there have been **4 589 220 confirmed cases** of COVID-19, including **107 498 deaths** reported to WHO



WHO: <https://www.who.int/health-topics/coronavirus>



- Forty-eight new cases were identified in Week 28, bringing the cumulative number of confirmed cases to 10959, including 378 imported cases mainly from South Sudanese returnees (207), Uganda (52), and Kenya (19). There were eight new imported cases in Week 28 (all from the Nimule point of entry)
- At the end of Week 28, 35 (43.8%) of the 80 counties in the country have a confirmed case. There was no county with a first confirmed case this week.
- This week showed a 54.8% increase in the number of reported cases compared to Week 27. There were no new deaths confirmed in Week 28.
- Average positivity yields have been declining in recent epi weeks (after peaking at 22.4% in Week 07), reaching a low of 0.4% in Week 19 before increasing to 1.1% in Week 28
- Eight alerts tested positive for COVID-19 this week. Cumulatively, 28841 alerts have been reported, of which 2757 (95.6%) have been verified, and 2677 (97.1%) of the verified alerts were sampled.
- Cumulatively, 16365 contacts have been listed and followed up since the first confirmed case was reported in April 2020, of which 14957 (91.4%) have completed follow-up
- Two SARS-CoV-2 lineages were detected in South Sudan. The first variant of interest (VOI) detected in the South Sudan samples is the A.23.1 lineage and the second one is the B.1.525 lineage
- As of Week 28, South Sudan has exhausted its first batch of vaccines from the COVAX facility. The second batch is expected in August. So far, South Sudan has vaccinated 57096 people, of whom 4763 are fully vaccinated and 52313 have received one dose. So far, 9259 healthcare workers have been vaccinated. Challenges to the vaccination campaign included:
 - Low uptake by healthcare workers
 - Low uptake among women (only 25.4% nationally)

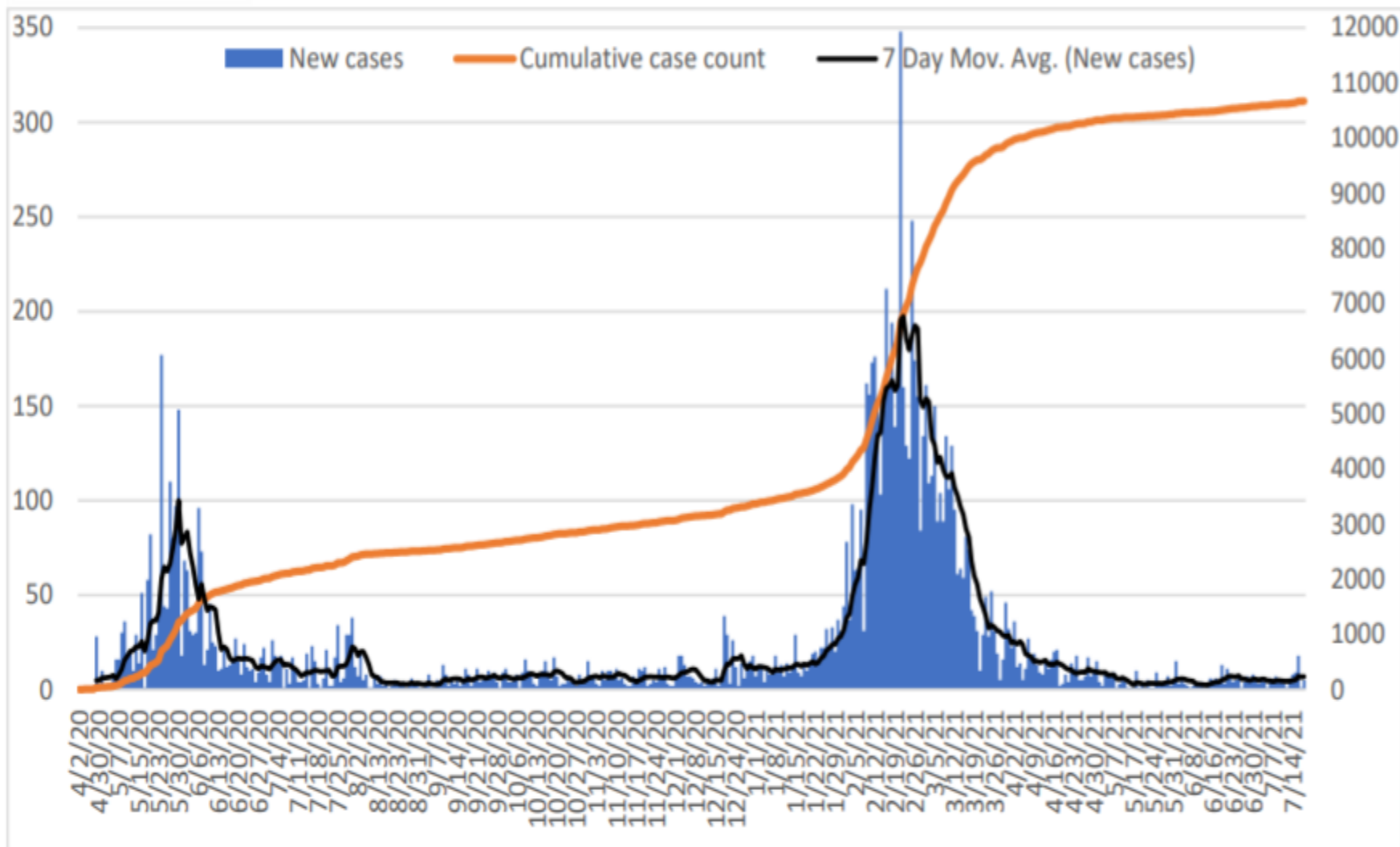


Figure 2. Epidemiological curve of reported cases through Week 28, showing new cases (blue bars), rolling 7-day average of reported cases (black line), and total cumulative reported cases (yellow line)

Overall Conclusions and Recommendations



Conclusion

- The overall performance of IDSR and EWARN reporting sites in week 28, 2021 is below the target of 80% in both Timeliness and Completeness
- **10 959** confirmed COVID-19 cases (case fatality rate of 1.07%) 117 deaths. Total **16,779** contacts identified, quarantined, & undergoing follow up as of week 28, 2021
- Rubella Outbreak in Nagero County, Western Equatoria State
- Given the COVID-19 pandemic, and the third pandemic wave that is currently underway in Africa, resurgence monitoring and response readiness is being enhanced for all the pillars including surveillance, laboratory, case management, infection prevention and control, border health, and community engagement to emphasize adherence to public health social measures including vaccination of health workers, high risk groups, and the general population

Recommendations

- All partners should support CHDs & State Ministries of Health to undertake IDSR/EWARN reporting
- All health facilities should report, and conduct case-based investigation of suspect measles cases and routine measles immunization should be strengthened in all counties
- Strengthen capacities for COVID-19 resurgence monitoring and response readiness through identifying and testing suspect cases (including genomic sequencing), isolating and effective management of confirmed cases, contact tracing, community engagement, COVID-19 vaccination, and strengthening adherence to PHSMs.



Thanks to the State Surveillance Officers, County Surveillance Officers and Health Facility in-charges for sharing the weekly IDSR data

Thanks to all partners for supporting IDSR weekly reporting and sharing the line lists

To access the IDSR bulletins for 2020 use the link below:

<https://www.afro.who.int/publications/south-sudan-weekly-disease-surveillance-bulletin-2020>



IDSR timeliness & completeness performance at county level for week 28 of 2021 (1)



STATE	COUNTY	Number of reporting sites	No. of HFs Reported on Time in WK 28	Timeliness Percentage of WK 28	No. of HFs Reported regardless of time in WK 28	Completeness Percentage of WK 28	No. of HFs Reported regardless of time in WK 27	Completeness Percentage of WK 27
Lakes	Cueibet	15	15	100%	15	100%	13	87%
Lakes	Wulu	14	14	100%	14	100%	14	100%
Lakes	Rumbek East	24	24	100%	24	100%	19	79%
Lakes	Awerial	7	7	100%	7	100%	7	100%
Lakes	Yirol East	11	11	100%	11	100%	9	82%
NBGZ	Aweil Centre	15	15	100%	15	100%	15	100%
Lakes	Rumbek Centre	23	22	96%	23	100%	14	61%
Lakes	Yirol West	12	11	92%	12	100%	12	100%
NBGZ	Aweil North	33	30	91%	30	91%	25	76%
WBGZ	Wau	28	25	89%	28	100%	28	100%
CES	Juba	46	40	87%	45	98%	41	89%
NBGZ	Aweil East	37	32	86%	35	95%	30	81%
CES	Morobo	5	4	80%	4	80%	3	60%
CES	Kajo Keji	17	13	76%	13	76%	15	88%
NBGZ	Aweil South	11	8	73%	8	73%	11	100%
CES	Terekeka	20	11	55%	18	90%	17	85%
NBGZ	Aweil West	37	19	51%	35	95%	16	43%
CES	Lainya	16	6	38%	6	38%	9	56%
CES	Yei	17	5	29%	5	29%	15	88%
WBGZ	Raja	15	1	7%	15	100%	7	47%
WBGZ	Jur River	35	0	0%	33	94%	3	9%
Lakes	Rumbek North	7	0	0%	0	0%	0	0%

STATE	COUNTY	Number of reporting sites	No. of HFs Reported on Time in WK 28	Timeliness Percentage of WK 28	No. of HFs Reported regardless of time in 28	Completeness Percentage of WK 28	No. of HFs Reported regardless of time in WK 27	Completeness Percentage of WK 27
Unity	Abiemnhom	4	4	100%	4	100%	3	75%
Unity	Guit	7	7	100%	7	100%	5	71%
WES	Nzara	20	20	100%	20	100%	20	100%
WES	Nagero	10	10	100%	10	100%	10	100%
WES	Mundri West	21	21	100%	21	100%	21	100%
WES	Maridi	26	26	100%	26	100%	26	100%
WES	Ibba	11	11	100%	11	100%	11	100%
WES	Mundri East	19	19	100%	19	100%	19	100%
WES	Yambio	42	42	100%	42	100%	42	100%
WES	Ezo	27	27	100%	27	100%	27	100%
WES	Mvolo	11	11	100%	11	100%	11	100%
Unity	Rubkona	15	14	93%	14	93%	10	67%
WES	Tambura	28	26	93%	27	96%	28	100%
Unity	Koch	7	6	86%	7	100%	6	86%
Unity	Mayom	14	12	86%	13	93%	10	71%
Unity	Leer	11	9	82%	9	82%	7	64%
Unity	Panyijjar	15	12	80%	13	87%	13	87%
Unity	Mayendit	12	6	50%	7	58%	7	58%
Unity	Pariang	11	1	9%	1	9%	11	100%



IDSR timeliness & completeness performance at county level for week 28 of 2021 (1)



STATE	COUNTY	Number of reporting sites	No. of HFs Reported on Time in WK 28	Timeliness Percentage of WK 28	No. of HFs Reported regardless of time in WK 28	Completeness Percentage of WK 28	No. of HFs Reported regardless of time in WK 27	Completeness Percentage of WK 27
Jonglei	Pochalla	7	7	100%	7	100%	7	100%
Jonglei	Fangak	17	15	88%	15	88%	16	94%
EES	Ikotos	27	22	81%	26	96%	22	81%
EES	Budi	21	17	81%	19	90%	12	57%
Jonglei	Nyirol	10	8	80%	9	90%	9	90%
EES	Kapoeta South	10	8	80%	9	90%	0	0%
EES	Lopa Lafon	18	14	78%	15	83%	5	28%
Jonglei	Duk	15	11	73%	11	73%	11	73%
Jonglei	Twic East	11	8	73%	8	73%	8	73%
EES	Kapoeta East	12	8	67%	8	67%	9	75%
EES	Kapoeta North	16	10	63%	11	69%	3	19%
Jonglei	Bor	35	21	60%	21	60%	21	60%
Jonglei	Pibor	7	4	57%	5	71%	5	71%
EES	Magwi	22	12	55%	18	82%	18	82%
Jonglei	Ayod	15	5	33%	5	33%	12	80%
Jonglei	Canal Pigi	12	4	33%	4	33%	5	42%
Jonglei	Akobo	8	1	13%	3	38%	0	0%
EES	Torit	20	2	10%	3	15%	16	80%
Jonglei	Uror	8	0	0%	0	0%	0	0%

STATE	COUNTY	Number of reporting sites	No. of HFs Reported on Time in WK 28	Timeliness Percentage of WK 28	No. of HFs Reported regardless of time in WK 28	Completeness Percentage of WK 28	No. of HFs Reported regardless of time in WK 27	Completeness Percentage of WK 27
Warrap	Tonj East	14	14	100%	14	100%	2	14%
Warrap	Tonj South	14	14	100%	14	100%	14	100%
Upper Nile	Maiwut	5	5	100%	5	100%	1	20%
Upper Nile	Longechuk	9	9	100%	9	100%	7	78%
Warrap	Gogrial West	31	30	97%	30	97%	28	90%
Warrap	Tonj North	14	13	93%	13	93%	12	86%
Upper Nile	Makal	7	6	86%	7	100%	7	100%
Warrap	Gogrial East	15	12	80%	12	80%	12	80%
Upper Nile	Akoka	5	4	80%	4	80%	4	80%
Warrap	Twic	26	20	77%	20	77%	22	85%
Upper Nile	Luakpiny Nasir	12	9	75%	9	75%	7	58%
Upper Nile	Melut	8	6	75%	6	75%	6	75%
Upper Nile	Fashoda	18	13	72%	13	72%	9	50%
Upper Nile	Maban	17	10	59%	11	65%	9	53%
Upper Nile	Manyo	10	5	50%	8	80%	6	60%
Upper Nile	Panyikang	4	2	50%	3	75%	3	75%
Upper Nile	Ulang	14	7	50%	9	64%	7	50%
Warrap	Abyei	10	5	50%	6	60%	9	90%
Upper Nile	Baiiet	4	1	25%	1	25%	2	50%
Upper Nile	Renk	11	0	0%	0	0%	0	0%



States	Number of reporting sites	Supporting Partners
WES	213	AMREF, World Vision, CUAMM, CDTY, OPEN
CES	117	HLSS, SSUHA, Healthnet TPO, IHO, GOAL, TRISS, THESO, IMA, SSHCO
NBGZ	133	Malaria Consortium, Healthnet TPO, IRC, CEDS, IHO
WBGZ	78	Cordaid, Healthnet TPO, CARE International, IOM, ALIMA
Jonglei	108	Nile Hope, MDM, JDF, Livewell, CMD, HFO, EDA, CRADA, Malaria Consortium, CMA, ACSO, MEDAIR, CARE, World Relief, UNH
EES	142	Cordaid, HLSS, CCM
Unity	94	Cordaid, UNIDOR, IRC, CHADO, CARE International, CRADA, CASS, IOM, Samaritan's Purse
Warrap	123	GOAL, CCM, WVI, Malaria Consortium, UNKEA, Save the Children, MSF
Upper Nile	117	Cordaid, WVI, RI, IMC, NIDO, UNKEA, MC, SSAID, CORDAID, IOM, HFD, TADO
Lakes	113	Doctors with Africa (CUAMM)

This bulletin is produced by the Ministry of Health with Technical support from WHO

For more help and support, please contact:

Dr. John Rumunu

Director General Preventive Health Services
Ministry of Health
Republic of South Sudan
Telephone: +211924767490
Email: ori.moiga@gmail.com

Mr. Angelo Majak Goup

A/Director, Emergency Preparedness and Response
Ministry of Health, RSS
Tell: +211929830530
Emails: majakdegoup99@gmail.com

IDSr Bulletin Editorial Team

1. Mr. Ajak Ater, MoH - Email: ajakater014@gmail.com
2. Ms. Sheila Baya, WHO - Email: bayas@who.int
3. Mr. Robert Lasu Martin, WHO - Email: lasur@who.int
4. Mrs. Rose Dagama, WHO - Email: dagamaa@who.int
5. Dr. Abraham Adut, WHO - Email: abenegoa@who.int
6. Dr. Alice Igale Lado, WHO - Email: ladua@who.int
7. Dr. Joseph Wamala, WHO - Email: wamalaj@who.int
8. Dr. Argata Guracha Guyo, WHO - Email: guyo@who.int

Notes

WHO and the Ministry of Health gratefully acknowledge the surveillance officers [at state, county, and health facility levels], health cluster and health pooled fund (HPF) partners who have reported the data used in this bulletin. We would also like to thank ECHO and USAID for providing financial support.

The data has been collected with support from the EWARS project. This is an initiative to strengthen early warning, alert and response in emergencies. It includes an online, desktop and mobile application that can be rapidly configured and deployed in the field. It is designed with frontline users in mind, and built to work in difficult and remote operating environments. This bulletin has been automatically published from the EWARS application.

More information can be found at <http://ewars-project.org>

