

South Sudan

Integrated Disease surveillance and response (IDSR)

Epidemiological Bulletin Week 29, 2021 (July 19- July 25)



World Health
Organization
South Sudan



- In week 29, 2021 IDSR reporting timeliness was 78% and completeness was 88% at health facility level and 79% for EWARS partners supported sites
- Of the 82 alerts in week 29, 2021; 75% were verified 2% were risk assessed and 2% required a response. Malaria (36), AWD (23), ARI (11) and bloody diarrhea (11) were the most frequent alerts in week 29, 2021
- Malaria remains the top cause of morbidity and accounted for 83,338 cases (62.9% of OPD cases)
- A total of 2,911 COVID-19 alerts have been investigated with 2,784 (95.6%) being verified. Total of 11,014 confirmed cases and 118 deaths (CFR of 1.07%)
- Other hazards include floods (unseasonal) in over 3 counties; Malaria in 1 counties, HEV in BentiuPoC.

SURVEILLANCE PERFORMANCE



For the Integrated Disease Surveillance (IDSR)
network and Early warning alert and response
network (EWARN)



IDSR timeliness performance at State level for week 29 & 28 of 2021



Completeness States Ranking	States	Number of reporting sites	No. of HFs Reported on Time in WK 29	Timeliness Percentage of WK 29	No. of HFs Reported on Time in WK 28	Timeliness Percentage of WK 28
1st	WES	213	213	100%	213	100%
2nd	NBGZ	133	126	95%	104	78%
3rd	Lakes	113	107	95%	104	92%
4th	WBGZ	78	70	90%	26	33%
5th	Jonglei	108	91	84%	84	78%
6th	CES	117	84	72%	79	68%
7th	Warrap	123	87	71%	108	88%
8th	Unity	94	62	66%	71	76%
9th	Upper Nile	112	72	64%	77	69%
10th	EES	142	87	61%	93	65%
	South Sudan	1233	999	81%	959	78%

KEY

	<60%	Poor
	61%-79%	Fair
	80%-99%	Good
	100%	Excellent

The timeliness of IDSR reporting (supported by EWARS mobile) at health facility level in week 29 was 81% compared to 78% in week 28. 5 states were above the target of 80%

Reporting challenges: Insecurity, internet access and new partners

IDSR completeness performance at State level for week 29 & 28 of 2021



Completeness States Ranking	States	Number of reporting sites	No. of HFs Reported regardless of time in WK 29	Completeness Percentage of WK 29	No. of HFs Reported regardless of time in WK 28	Completeness Percentage of WK 28
1st	WES	213	213	100%	213	100%
2nd	NBGZ	133	130	98%	123	92%
3rd	Lakes	113	110	97%	106	94%
4th	WBGZ	78	75	96%	76	97%
5th	Warrap	123	110	89%	109	89%
6th	Jonglei	108	95	88%	88	81%
7th	EES	142	123	87%	113	80%
8th	CES	117	95	81%	92	79%
9th	Upper Nile	112	83	74%	86	77%
10th	Unity	94	67	71%	75	80%
	South Sudan	1233	1101	89%	1081	88%

KEY

	<60%	Poor
	61%-79%	Fair
	80%-99%	Good
	100%	Excellent

The completeness of IDSR reporting (supported by EWARS mobile) at health facility level was 89% in week 29 compared to 88% in week 28. 6 states were above the target of 80%



Surveillance: EWARS timeliness performance indicator by partner for week 29 and 28 of 2021

Partner Timeliness of IDSR Reporting-Rates in week 29 of 2021.					
Partner	HF's	Reporting	Performance		
Emergency Partners	Number of reporting sites	# of reports received on Time in Week 29	Timeliness of reporting in Week 29	# of reports received regardless of Time in Week 28	Completeness of reporting in Week 28
World Relief	2	2	100%	2	100%
ALIMA	3	3	100%	3	100%
CMD	1	1	100%	1	100%
IHO	2	2	100%	2	100%
IRC	1	1	100%	1	100%
SSHCO	1	1	100%	1	100%
IOM	12	12	100%	12	100%
RHS	1	1	100%	1	100%
TADO	4	4	100%	4	100%
IMC	24	23	96%	20	83%
HFD	6	5	83%	6	100%
MSF-E	6	4	67%	6	100%
HFO	3	2	67%	2	67%
TRI-SS	2	1	50%	2	100%
UNH	4	2	50%	2	50%
UNIDOR	2	0	0%	2	100%
MSF-H	7	0	0%	3	43%
TOTAL	81	64	79%	70	86%

Timeliness for EWARS partners supported sites were at 79% in week 29, 2021 compared to 86% at week 28, 2021



Surveillance: EWARS completeness performance indicator by partner for week 29 and 28 of 2021

Partner Completeness of IDSR Reporting-Rates in week 29 of 2021.					
Partner	HFs	Reporting	Performance		
PARTER	Number of reporting sites	# of reports received regardless of Time in Week 29	Completeness of Week 29	# of reports received regardless of Time in Week 28	Completeness of Week 28
World Relief	2	2	100%	2	100%
ALIMA	3	3	100%	3	100%
CMD	1	1	100%	1	100%
IHO	2	2	100%	2	100%
IRC	1	1	100%	1	100%
IOM	12	12	100%	12	100%
TRI-SS	2	2	100%	2	100%
RHS	1	1	100%	1	100%
MSF-E	6	6	100%	6	100%
HFD	6	6	100%	6	100%
UNIDOR	2	2	100%	2	100%
TADO	4	4	100%	4	100%
HFO	3	3	100%	2	67%
IMC	24	23	96%	20	83%
UNH	4	2	50%	2	50%
MSF-H	7	3	43%	3	43%
SSHCO	1	0	0%	1	100%
TOTAL	81	73	90%	70	86%

Completeness for EWARS partners supported sites was at 90% in week 29, 2021 compared to 86% at week 28, 2021

EVENT-BASED SURVEILLANCE



Alert management including detection; reporting;
verification; risk assessment; & risk
characterization





State	Acute jaundice syndrome	Acute Respiratory Infections (ARI)	Acute Watery Diarrhoea	Bloody Diarrhoea	Malaria	Guinea Worm	EBS	Covid-19	Total alerts
CES			3			1			4
EES			2	4	1		1		8
NBGZ					1				1
Unity	1	6	1	4	2			2	16
Upper Nile		2	6	1	2				11
Warrap	1	1	7		8			1	18
WBGZ		2	4	2	2				10
WES					14				14
Total alerts	2	11	23	11	30	1	1	3	82

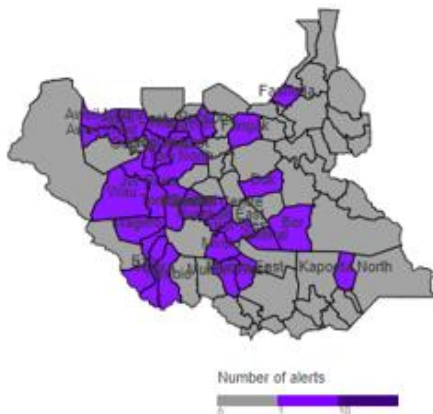
During this week:

- **11 ARI alert:** 6 from Unity State, 2 from Upper Nile state, 1 from Warrap State, 2 from WBGZ Wau County, Ngisa PHCU sample not collected
- **23 AWD alert:** 3 from CES, 2 from EES, treated for diarrhea, 1 from Unity treated as normal diarrhea, 6 from Upper Nile State, 7 from Warrap treated as normal diarrhea, 4 WBGZ State treated for diarrhea.
- **11 ABD alert:**, 4 from EES patients given treatment, 4 from Unity investigation under way, 1 from Upper Nile, 2 from WBGZ State.
- **30 Malaria alerts:** 1 from EES, 2 from Upper Nile State, 2 from Unity State, 8 from Warrap State, 2 from WBGZ, 14 from WES, all these are due to the high increase of malaria cases in the Country.
- **3 COVID-19 alert:** 2 from Unity state, 1 from Warrap state, Abyei County in Juljok MSF Hospital and 1 in Warrap State
- **1 Guinea Worm alert:** from CES, Terekeka County, Tukoro PHCC it was investigated and sample was collected pending lab results
- **1 EBS alert:** This alert is from EES, Ikotos County, Huma PHCU which is a suspected case of yellow fever with signs and symptoms such as yellow eye, hands, fever and urine yellow and sample yet to be collected by the team.
- **2 AJS alert:** from Warrap State, Abyei County in Juljok MSF Hospital and unity state

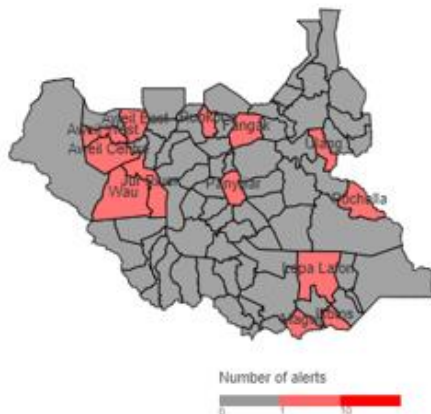
Alert: Map of key disease alerts by county of week 29 of 2021



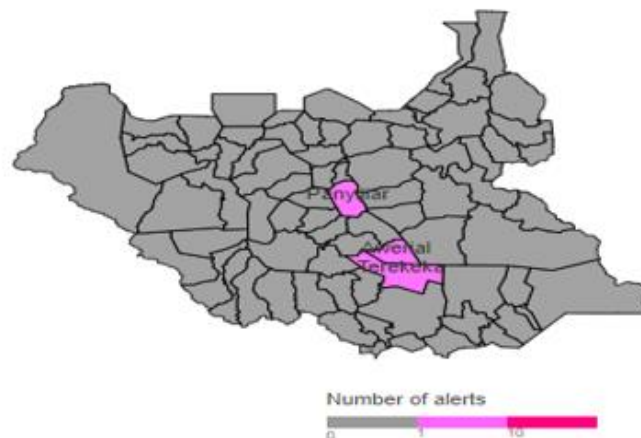
Map 2a | Malaria (W29 2021)



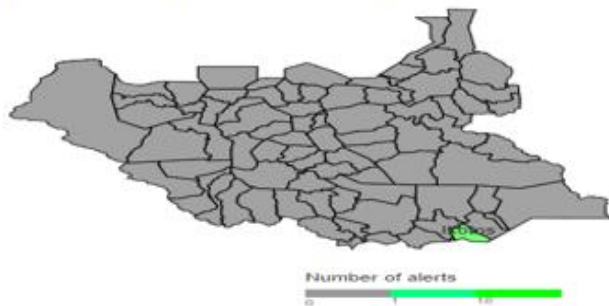
Map 2b | Bloody diarrhoea (W29 2021)



Map 2e | Guinea Worm (W29 2021)



Map 2f | Event-based surveillance (W29 2021)



W29	Cumulative (2021)	
0	9	Low risk
8	8	Medium risk
0	51	High risk
3	142	Very high risk

75%	89%	% verified
0%	0%	% auto-discarded
2%	4%	% risk assessed
2%	3%	% requiring a response

SUSPECTED OUTBREAKS



Major suspected outbreaks in South Sudan in
2020





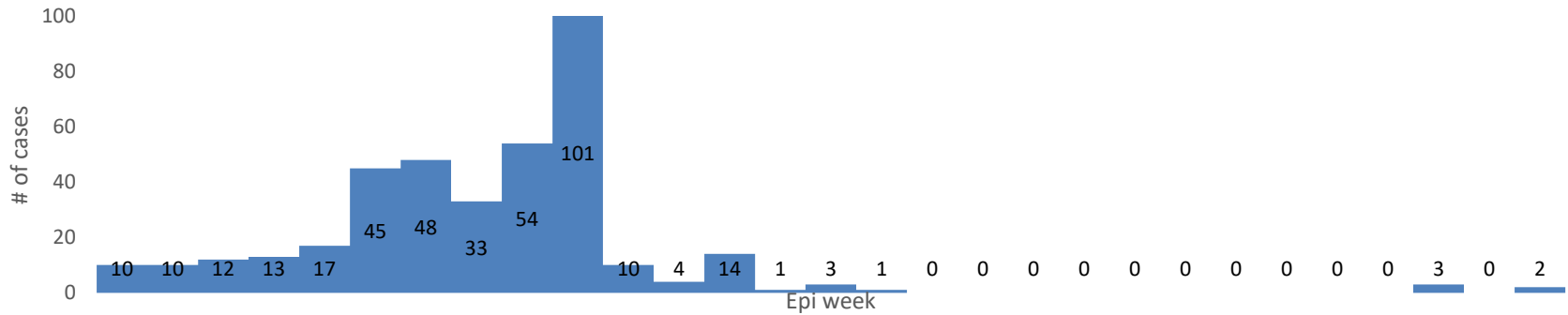
Malaria was the leading cause of morbidity and mortality, accounting for **62.9%** of all morbidities and **23.5%** of all Mortalities this week 21.

Three Counties with malaria trends which have exceeded the threshold (third quartile of trends for the period 2013-2017)

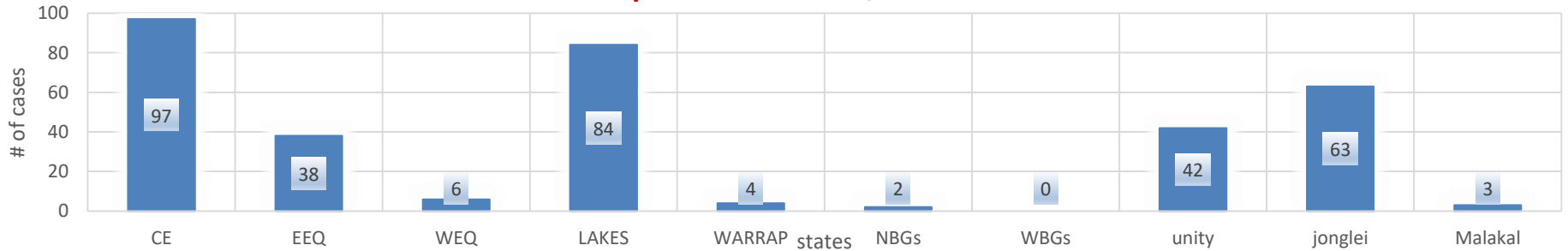
- 1. NBGz State (Aweil east)**
- 2. CE State (Kajo- keji)**
- 3. Upper Nile State (Malakal)**

Routine Sentinel Surveillance | Human Influenza

Covid-19 total confirmed cases in South Sudan from Sentinel sites wk1 to wk 29, 2021



of Covid-19 cases per state in wk 29, 2021 from sentinel sites



- As of 28th April 2021, a total of 138 samples were collected from three sentinel sites in Juba with 131 samples testing negative for influenza; one (1) positive for COVID-19; and six (6) positive for influenza B (with four (4) sub-typed as Victoria while the other two (2) are pending sub-typing)
- There are currently 13 Covid-19 designated sentinel surveillance sites in Juba and States Hospitals that are collecting epidemiological data and samples from Covid-19/ILI/SARI cases. A total of 7720 samples have been collected in 2021 with 549 (7.1%) being positive for COVID-19 from sentinel sites.

ACTIVE OUTBREAKS AND PUBLIC HEALTH EVENTS



Brief epidemiological description and public health response for active outbreaks and public health events`





Preparedness for the flooding season

- South Sudan is expected to face another severe flooding season in 2021 for the third consecutive year. The severe flooding seasons in 2019 and 2020 affected over one million people across many counties.
- The government ministries and partners continue to undertake mitigation measures in readiness for the upcoming flooding season including:
 - Rehabilitation of the damaged dykes in Bor South and Twic East counties.
 - Monitoring of the rainfall forecast to enable the provision of early warning signals. Moderate rainfall (50 - 100 mm) is expected over much of South Sudan during 27 July -3 August 2021.
 - Updating of flooding preparedness and contingency plans and prepositioning of essential supplies including emergency health kits
- Flooding has affected some 21 000 people in Old Fangak County in Jonglei, and some 3 000 people in Guit County, Unity in June 2021.



Updates on Public Health Response

- The humanitarian situation in South Sudan deteriorated in the first of 2021. The Integrated Food Security Phase Classification (IPC) report released in December 2020 projected that 7.2 million people will face high levels of acute (IPC Phase 3+) food insecurity during April-July 2021.
- In the six most affected counties, some 820 000 people were projected to face a crisis or worse levels of food insecurity while over 108 000 people were projected to be in IPC Phase 5 catastrophe during the lean season.
- The multi-sectoral response aimed at scaling up access to life-saving food security and livelihood, health and nutrition, protection and WASH services and assistance has been underway in the prioritized six counties since December 2020.
- WHO and Health Cluster partners aim at reducing preventable mortality and morbidity by scaling up access to basic health and nutrition services, enhancing capacities of disease surveillance, prevention, detection and response to infectious disease outbreaks, and building resilience of the health system.

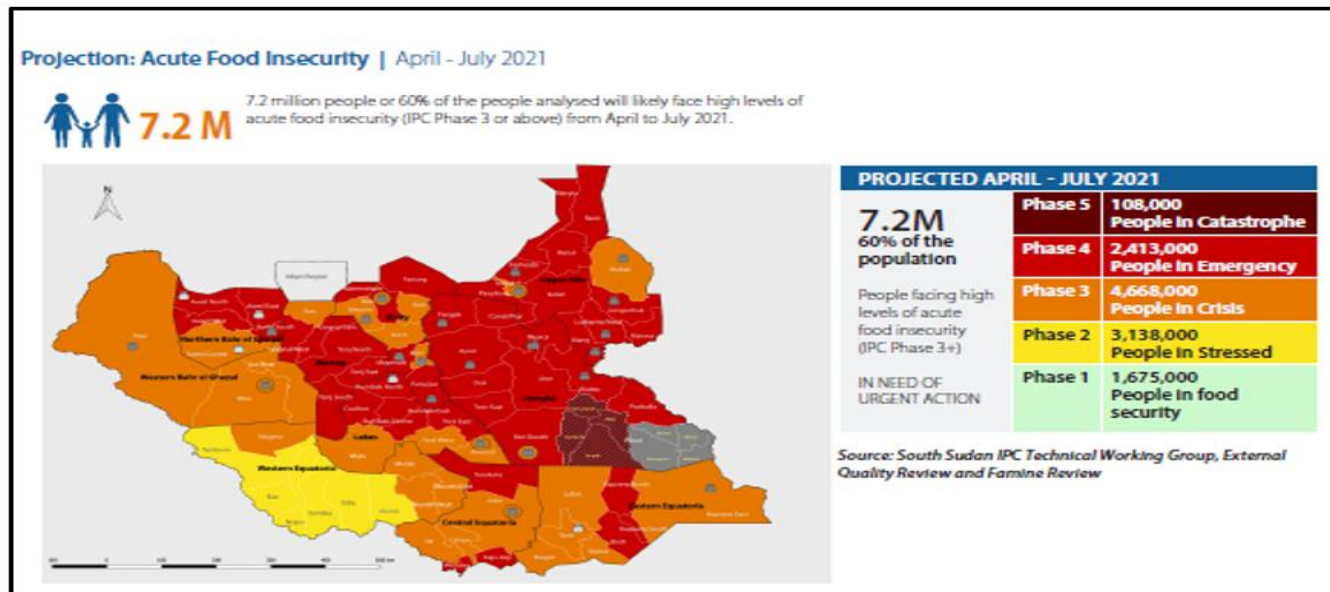


Figure 1: population estimates by IPC Phase and State based on the compilation of the South Sudan IPC Technical Working Group

- Increased looting of supplies and sustained sub-national violence in Greater Tonj and GPAA, and threats and attacks on humanitarians by youths in several locations impeded humanitarian operations.
- The most recent incident of sub-national violence occurred on 8-9 July 2021 in Tonj North resulting in the displacement of >5 000 people, killing of 14 people and burning of 140 shelters. Health facilities, schools and a UN warehouse containing aid food were vandalized and looted.



AFP Cases in 2021:

The total number AFP cases is 249. cases of the Week are reported from.

▪ **Main surveillance indicators for 2021**

- *The national Non-Polio AFP rate is 6.73 in 2021, All state hubs haven achieved NP-AFP rate of 2.0 and above except Northern Bahr El Ghazal*
- *8 Hubs achieved stool adequacy rate of 80% except; Jonglei state hub and Western Bahr El Ghazal State is below*

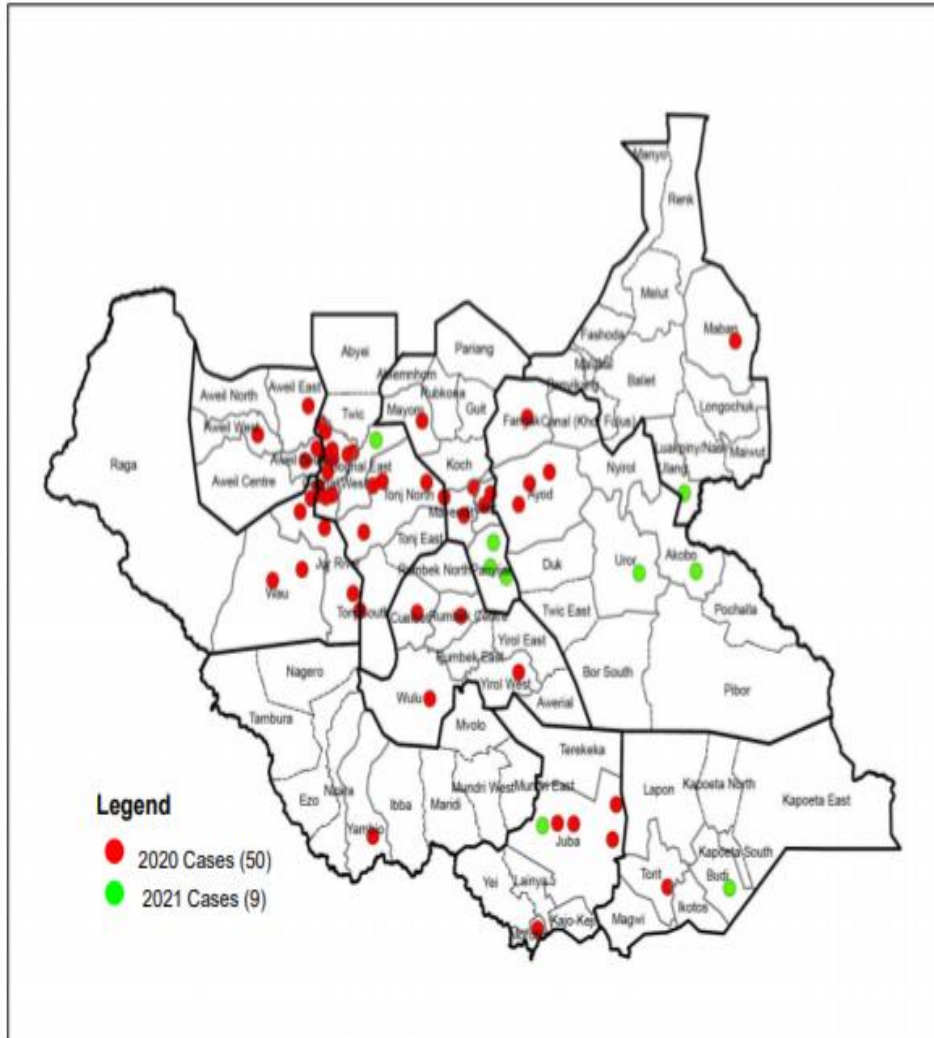
▪ **Total of reported AFP Cases in 2021 are 249 (below details by classification).**

- *Discarded as NPAFP =199*
- *Pending for Lab culture =30*
- *Pending Lab ITD =0*
- *Pending for NPEC =4*

• **AFP Surveillance indicators:**

- *Early detection within 7 days of onset of cases =92%*
- *Early investigation within 48 Hours from Notification =83%*
- *# of silent Counties that didn't report any case for 2019 =13(16%),*
- *Stool Adequacy =88%*
- *Immunity profile 4+ Doses (6-59) for 2021 AFP cases = 52%*
- *Intensified case search continues at facility ,Community and AVADAR*

Distribution of cVDPV2 case isolates from AFP cases as of 27th /July / 2021



- Total of 59 cases with 27 counties affected by the cVDPV2 outbreak across all 10 states.
- The most recent cVDPV2 case from AFP sample was reported from Panyijar, Unity State, with date onset of paralysis on 8th April 2021.
- 9 new cases reported after completion of one round of mOPV2 and 2 after the 2nd round
- Only 9 new cases with date of onset in 2021
- All cases in 2021 have occurred in a different county except that in Juba.
- 3 cases reported from Environmental samples and isolates were reported from Amarat and Roton environmental surveillance sites.

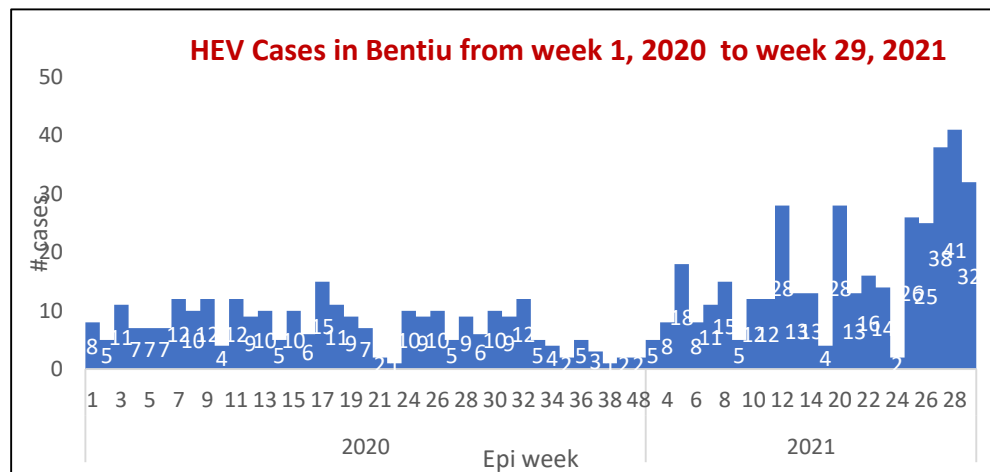


Aetiological agent	Location (county)	Date first reported	New cases since last bulletin	Cumulative cases to date (attack rate %)	Interventions			
					Case management	Vaccination	Health promotion	WASH
Ongoing epidemics								
Hepatitis E	Bentiu PoC	03/01/2018	14	631 (0.022)	Yes	No	Yes	Yes
COVID-19	35 counties	05/4/2020		10,855	yes	yes	yes	yes
cVDPV2	25 counties	11/06/2020 18/09/2020	0	54	Yes	Yes	Yes	Yes
Rubella	Tambura	11/1/2021	0	23 (0.13)	Yes	No	Yes	Yes
Rubella	Nagero	01/03/ 20201	0	5 (0.25)	Yes	No	Yes	N/A





Hepatitis E, Bentiu IDP camp (1)



Age-Group	Alive	Dead	Grand Total	Percentage	CFR	Cum. %2
1 - 4 Years	226		226	28%	0%	28%
10 - 14 Years	114		114	14%	0%	42%
15+ Years	280	3	283	35%	1%	78%
5 - 9 Years	176	2	178	22%	1%	100%
Grand Total	796	5	801	100%	0.01	

Descriptive epidemiology

- The persistent transmission of HEV in Bentiu IDP camp continues with **801** cases since beginning of 2019
- There were (**32**) new cases reported in week 29, 2021
- All the cases were managed as outpatient cases except for seven cases who were admitted
- 5 deaths reported in 2019 and 2020
- 52% are female and 48% are male.
- Age group less than 15 years had the most cases with (65%) cases.
- There is risk of adverse outcomes women are infected in their last trimester
- Use of unsafe drinking water is likely to be source of infection
- Up to week 29, 2021; a cumulative of 801 cases of HEV in Bentiu IDP camp including 5 deaths (CFR 0.62%)
- There is an upsurge of HEV cases since the beginning of 2021. The upsurge is attributed to declining WASH in the IDP camp as the daily workers and hygiene promoters have not been working for months now amidst reduced funding for WASH activities in IDP camp.

Public health response

- Given the current HEV upsurge in Bentiu IDP camp, the WASH cluster in Juba working with the local WASH implementing partners – Concern Worldwide; Mercy Corps; and IOM have agreed to undertake the following interventions:
 - Intensify Hygiene promotion messaging prioritizing the most affected sectors. Many of the daily workers stopped working for quite some time including Hygiene Promoters hence orientation of HPs will be intensified
 - Provide WASH NFIs (soap, buckets for water storage and handling)
 - Intensify water quality monitoring at source and point of use and adjust chlorine dosage accordingly to maintain FRC levels at 0.5-1mg/L as the point of collection
- Partners, - WHO and MSF in support of the MoH are exploring the feasibility of deploying HEV vaccines as an additional outbreak response tool to interrupt transmission
- The HEV taskforce is being activated to implement comprehensive HEV control interventions to interrupt transmission
- A costed HEV strategy is being developed to guide implementation and mobilization of resources to support the response



Aetiological agent	Location (county)	Date first reported	New cases since last bulletin	Cumulative cases to date (attack rate %)	Interventions			
					Case management	Vaccination	Health promotion	WASH
Controlled epidemics								
Measles	Juba	21/11/2019	NR	6(0.1667)	Yes	No	Yes	N/A
Measles	Tonj East	12/12/2019	NR	61(0.98)	yes	Yes	Yes	N/A
Measles	Bor	17/01/2020	NR	14(0.214)	yes	No	yes	N/A
Measles	Jebel Boma	10/12/2019	NR	96(0.063)	yes	No	Yes	N/A
Measles	Kapoeta East	18/01/2020	NR	16(0.625)	yes	No	Yes	N/A
Measles	Aweil East	29/12/2019	NR	664 (0.127)	Yes		No	Yes
Measles	Pibor	27/1/2020	NR	355 (0.0028)	Yes		Yes	Yes
Measles	Wau	5/1/2020	NR	39 (0.051)	Yes		Yes	Yes
Measles	Ibba	25/1/2020	0	55 (0.36)	Yes		Yes	Yes



COVID-19 Updates



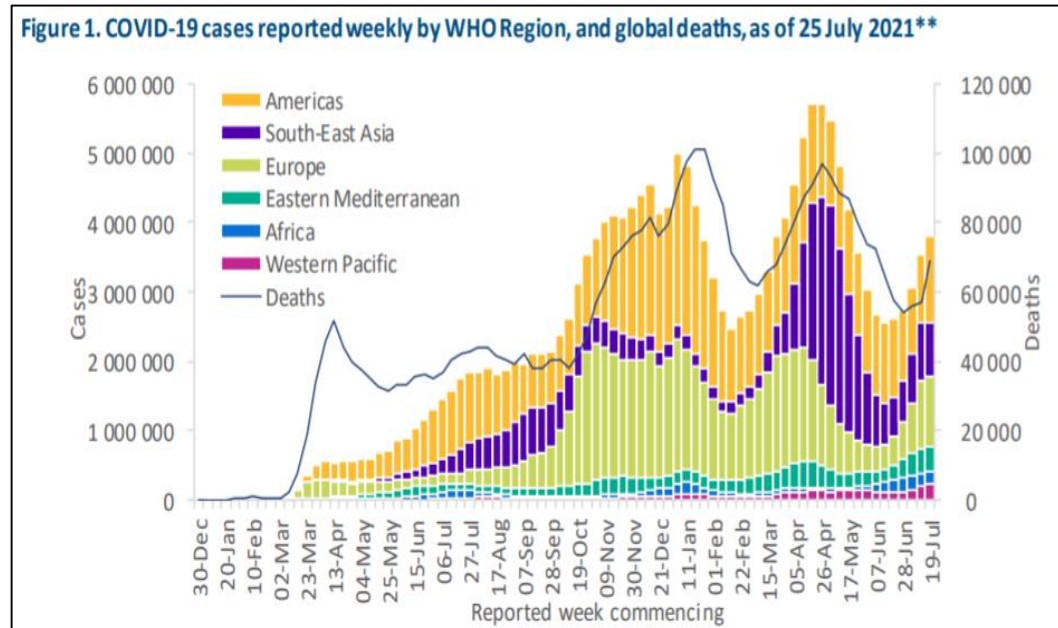
COVID-19 Virus Situation Summary



Situation update as of 27 July 2021

- Globally, 20 July 2021, there have been **193 657 725 confirmed cases** of COVID-19, including **4 154 660 deaths**, reported to WHO. As of **29 July 2021**, a total of **3,839,816,037 vaccine doses** have been administered.

- In Africa, as of **27 July 2021**, there have been **4 773 581 confirmed cases** of COVID-19, including **112 429 deaths** reported to WHO



WHO: <https://www.who.int/health-topics/coronavirus>



- Fifty-five new cases were identified in Week 29, bringing the cumulative number of confirmed cases to 11014, including 384 imported cases mainly from South Sudanese returnees (213), Uganda (52), and Kenya (19). There were six new imported cases in Week 29 (all from the Nimule point of entry)
- At the end of Week 29, 35 (43.8%) of the 80 counties in the country have a confirmed case. There was no county with a first confirmed case this week..
- This week showed a 14.6% increase in the number of reported cases compared to Week 28, a second consecutive week of increase in the number of new cases. There was one new death confirmed in Week 29.
- Average positivity yields have been declining in recent epi weeks (after peaking at 22.4% in Week 07), reaching a low of 0.4% in Week 19 before increasing to 1.7% this week
- Three alerts tested positive for COVID-19 this week. Cumulatively, 29111 alerts have been reported, of which 2784 (95.6%) have been verified, and 2703 (97.1%) of the verified alerts were sampled
- Cumulatively, 16,466 contacts have been listed and followed up since the first confirmed case was reported in April 2020, of which 14989 (91.0%) have completed follow-up.
- Two SARS-CoV-2 lineages were detected in South Sudan. The first variant of interest (VOI) detected in the South Sudan samples is the A.23.1 lineage and the second one is the B.1.525 lineage
- South Sudan has exhausted its first batch of vaccines from the COVAX facility in Week 28. The second batch is expected in August. So far, South Sudan has vaccinated 57096 people, of whom 4763 are fully vaccinated and 52313 have received one dose.

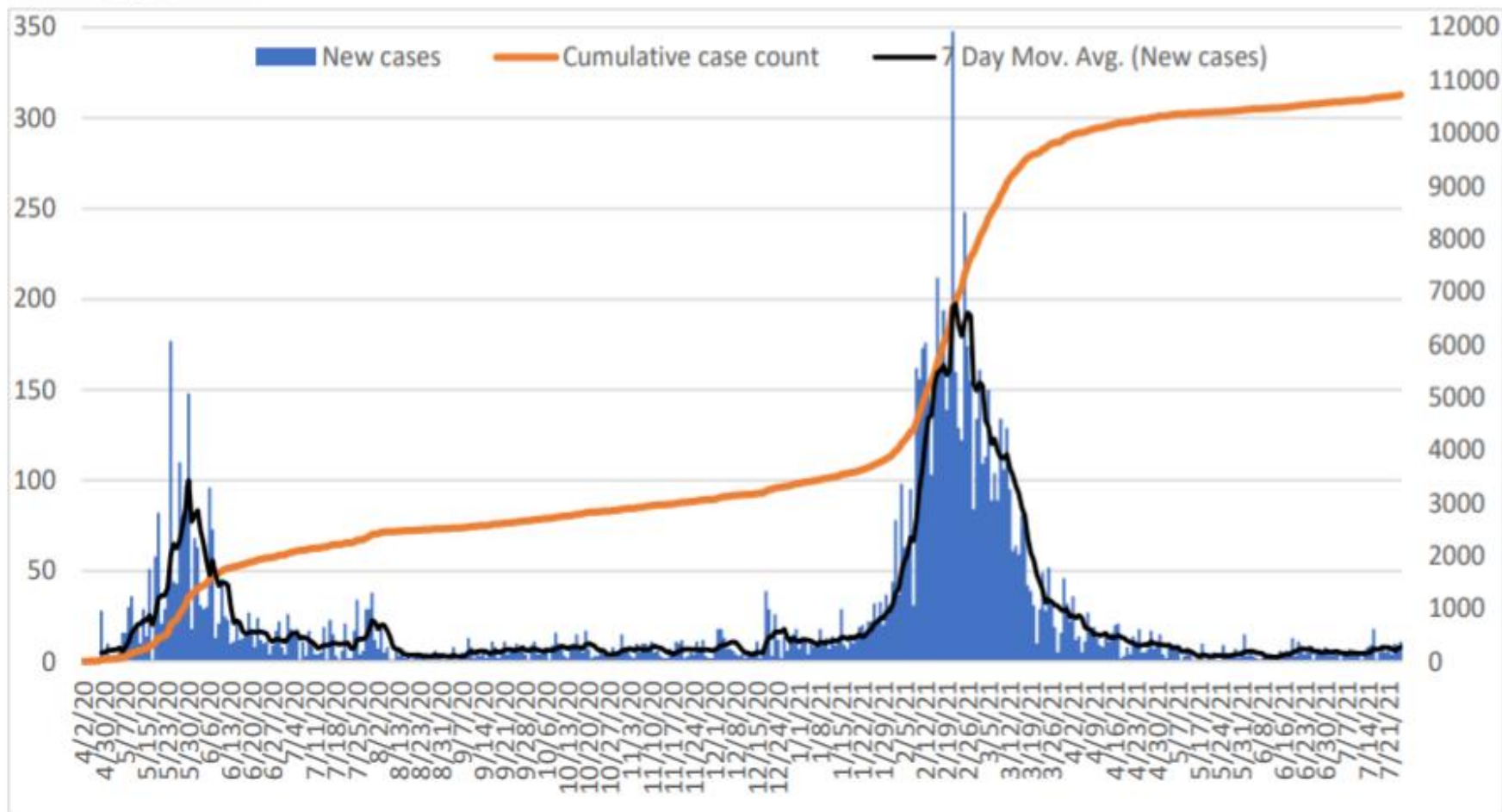


Figure 2. Epidemiological curve of reported cases through Week 29, showing new cases (blue bars), rolling 7-day average of reported cases (black line), and total cumulative reported cases (yellow line)



Overall Conclusions and Recommendations



Conclusion

- The overall performance of IDSR and EWARN reporting sites in week 29, 2021 is above the target of 80% in both Timeliness and Completeness
- **11, 014** confirmed COVID-19 cases (case fatality rate of 1.07%) 118 deaths. Total **16,466** contacts identified, quarantined, & undergoing follow up as of week 29, 2021
- Given the COVID-19 pandemic, and the third pandemic wave that is currently underway in Africa, resurgence monitoring and response readiness is being enhanced for all the pillars including surveillance, laboratory, case management, infection prevention and control, border health, and community engagement to emphasize adherence to public health social measures including vaccination of health workers, high risk groups, and the general population

Recommendations

- All partners should support CHDs & State Ministries of Health to undertake IDSR/EWARN reporting
- All health facilities should report, and conduct case-based investigation of suspect measles cases and routine measles immunization should be strengthened in all counties
- Strengthen capacities for COVID-19 resurgence monitoring and response readiness through identifying and testing suspect cases (including genomic sequencing), isolating and effective management of confirmed cases, contact tracing, community engagement, COVID-19 vaccination, and strengthening adherence to PHSMs.

Thanks to the State Surveillance Officers, County Surveillance Officers and Health Facility in-charges for sharing the weekly IDSR data

Thanks to all partners for supporting IDSR weekly reporting and sharing the line lists

To access the IDSR bulletins for 2020 use the link below:

<https://www.afro.who.int/publications/south-sudan-weekly-disease-surveillance-bulletin-2020>



IDSR timeliness & completeness performance at county level for week 29 of 2021 (1)



STATE	COUNTY	Number of reporting sites	No. of HF's Reported on Time in WK 29	Timeliness Percentage of WK 29	No. of HF's Reported regardless of time in WK 29	Completeness Percentage of WK 29	No. of HF's Reported regardless of time in WK 28	Completeness Percentage of WK 28
Lakes	Cueibet	15	15	100%	15	100%	15	100%
Lakes	Rumbek North	7	7	100%	7	100%	0	0%
Lakes	Rumbek East	24	24	100%	24	100%	24	100%
Lakes	Awerial	7	7	100%	7	100%	7	100%
Lakes	Yirol West	12	12	100%	12	100%	12	100%
Lakes	Yirol East	11	11	100%	11	100%	11	100%
NBGZ	Aweil South	11	11	100%	11	100%	8	73%
NBGZ	Aweil Centre	15	15	100%	15	100%	15	100%
WBGZ	Wau	28	27	96%	27	96%	28	100%
NBGZ	Aweil West	37	35	95%	37	100%	35	95%
NBGZ	Aweil East	37	35	95%	37	100%	35	95%
NBGZ	Aweil North	33	30	91%	30	91%	30	91%
WBGZ	Jur River	35	31	89%	35	100%	33	94%
Lakes	Rumbek Centre	23	20	87%	20	87%	23	100%
CES	Juba	46	37	80%	45	98%	45	98%
WBGZ	Raja	15	12	80%	13	87%	15	100%
CES	Terekeka	20	16	80%	16	80%	18	90%
Lakes	Wulu	14	11	79%	14	100%	14	100%
CES	Yei	17	11	65%	14	82%	5	29%
CES	Kajo Kebo	17	11	65%	11	65%	13	76%
CES	Morobo	5	3	60%	3	60%	4	80%
CES	Lainya	16	6	38%	6	38%	6	38%

STATE	COUNTY	Number of reporting sites	No. of HF's Reported on Time in WK 29	Timeliness Percentage of WK 29	No. of HF's Reported regardless of time in 29	Completeness Percentage of WK 29	No. of HF's Reported regardless of time in WK 28	Completeness Percentage of WK 28
Unity	Abiemnhom	4	4	100%	4	100%	4	100%
Unity	Guit	7	7	100%	7	100%	7	100%
WES	Nzara	20	20	100%	20	100%	20	100%
WES	Nagero	10	10	100%	10	100%	10	100%
WES	Mundi West	21	21	100%	21	100%	21	100%
WES	Maridi	26	26	100%	26	100%	26	100%
WES	Ibba	11	11	100%	11	100%	11	100%
WES	Mundi East	19	19	100%	19	100%	19	100%
WES	Yambio	42	42	100%	42	100%	42	100%
WES	Ezo	27	27	100%	27	100%	27	100%
WES	Mvolo	11	11	100%	11	100%	11	100%
Unity	Panyijjar	15	14	93%	14	93%	13	87%
WES	Tambura	28	26	93%	26	93%	27	96%
Unity	Pariang	11	9	82%	9	82%	1	9%
Unity	Rubkona	15	12	80%	14	93%	14	93%
Unity	Mayom	14	10	71%	12	86%	13	93%
Unity	Koch	7	5	71%	5	71%	7	100%
Unity	Leer	11	1	9%	2	18%	9	82%
Unity	Mayendit	12	0	0%	0	0%	7	58%

IDSR timeliness & completeness performance at county level for week 29 of 2021 (1)



STATE	COUNTY	Number of reporting sites	No. of HFs Reported on Time in WK 29	Timeliness Percentage of WK 29	No. of HFs Reported regardless of time in WK 29	Completeness Percentage of WK 29	No. of HFs Reported regardless of time in WK 28	Completeness Percentage of WK 28
Jonglei	Pochalla	7	7	100%	7	100%	7	100%
EES	Kapoeta South	10	10	100%	10	100%	9	90%
Jonglei	Fangak	17	16	94%	17	100%	15	88%
EES	Kapoeta North	16	15	94%	15	94%	11	69%
EES	Magwi	22	19	86%	20	91%	18	82%
Jonglei	Ayod	15	12	80%	12	80%	5	33%
EES	Kapoeta East	12	9	75%	9	75%	8	67%
Jonglei	Duk	15	11	73%	11	73%	11	73%
Jonglei	Twic East	11	8	73%	8	73%	8	73%
Jonglei	Pibor	7	5	71%	5	71%	5	71%
Jonglei	Nyirrol	10	6	60%	7	70%	9	90%
Jonglei	Bor	35	21	60%	21	60%	21	60%
EES	Ikotos	27	16	59%	26	96%	26	96%
EES	Lopa Lafon	18	8	44%	10	56%	15	83%
EES	Budi	21	9	43%	16	76%	19	90%
Jonglei	Canal Pigi	12	5	42%	5	42%	4	33%
EES	Torit	20	1	5%	17	85%	3	15%
Jonglei	Akoba	8	0	0%	2	25%	3	38%
Jonglei	Uror	8	0	0%	0	0%	0	0%

STATE	COUNTY	Number of reporting sites	No. of HFs Reported on Time in WK 29	Timeliness Percentage of WK 29	No. of HFs Reported regardless of time in WK 29	Completeness Percentage of WK 29	No. of HFs Reported regardless of time in WK 28	Completeness Percentage of WK 28
Warrap	Tonj South	14	14	100%	14	100%	14	100%
Upper Nile	Maiwut	5	5	100%	5	100%	5	100%
Upper Nile	Longechuk	9	9	100%	9	100%	9	100%
Warrap	Gogrial West	31	30	97%	30	97%	30	97%
Warrap	Tonj North	14	13	93%	13	93%	13	93%
Upper Nile	Akoka	5	4	80%	4	80%	4	80%
Upper Nile	Fashoda	18	14	78%	14	78%	13	72%
Upper Nile	Baliet	4	3	75%	3	75%	1	25%
Upper Nile	Panyikang	4	3	75%	3	75%	3	75%
Upper Nile	Makal	7	5	71%	7	100%	7	100%
Upper Nile	Ulang	14	10	71%	10	71%	9	64%
Warrap	Gogrial East	15	9	60%	12	80%	12	80%
Warrap	Abyei	10	6	60%	6	60%	6	60%
Upper Nile	Maban	17	9	53%	12	71%	11	65%
Warrap	Twic	26	13	50%	25	96%	20	77%
Upper Nile	Manyo	10	5	50%	5	50%	8	80%
Upper Nile	Luakpiny Nasir	12	5	42%	10	83%	9	75%
Warrap	Tonj East	14	2	14%	10	71%	14	100%
Upper Nile	Renk	11	0	0%	0	0%	0	0%
Upper Nile	Melut	8	0	0%	0	0%	6	75%



States	Number of reporting sites	Supporting Partners
WES	213	AMREF, World Vision, CUAMM, CDTY, OPEN
CES	117	HLSS, SSUHA, Healthnet TPO, IHO,GOAL,TRI-SS,THESO,IMA,SSHCO
NBGZ	133	Malaria Consortium, Health net TPO, IRC, CEDS, IHO
WBGZ	78	Cordaid, Healthnet TPO, CARE International,IOM,ALIMA
Jonglei	107	Nile Hope, MDM, JDF, Livewell, CMD, HFO, EDA, CRADA, Malaria Consortium, CMA,ACSO,MEDAIR,CARE,World Relief,UNH
EES	142	Cordaid, HLSS, CCM
Unity	94	Cordaid, UNIDOR, IRC, CHADO, CARE International, CRADA, CASS,IOM,Samaritan's Purse
Warrap	123	GOAL, CCM, WVI, Malaria Consortium, UNKEA, Save the Children, MSF
Upper Nile	112	Cordaid, WVI, RI, IMC, NIDO, UNKEA, MC, SSAID,CORDAID ,IOM,HFD,TADO
Lakes	113	Doctors with Africa (CUAMM)

This bulletin is produced by the Ministry of Health with Technical support from WHO

For more help and support, please contact:

Dr. John Rumunu

Director General Preventive Health Services
Ministry of Health
Republic of South Sudan
Telephone: +211924767490
Email: ori.moiga@gmail.com

Mr. Angelo Majak Goup

A/Director, Emergency Preparedness and Response
Ministry of Health, RSS
Tell: +211929830530
Emails: majakdegoup99@gmail.com

IDSR Bulletin Editorial Team

1. Mr. Ajak Ater, MoH - Email: ajakater014@gmail.com
2. Ms. Sheila Baya, WHO - Email: bayas@who.int
3. Mr. Robert Lasu Martin, WHO - Email: lasur@who.int
4. Mrs. Rose Dagama, WHO - Email: dagamaa@who.int
5. Dr. Abraham Adut, WHO - Email: abenegoa@who.int
6. Dr. Alice Igale Lado, WHO - Email: ladua@who.int
7. Dr. Joseph Wamala, WHO - Email: wamalaj@who.int
8. Dr. Argata Guracha Guyo, WHO - Email: guyo@who.int

Notes

WHO and the Ministry of Health gratefully acknowledge the surveillance officers [at state, county, and health facility levels], health cluster and health pooled fund (HPF) partners who have reported the data used in this bulletin. We would also like to thank ECHO and USAID for providing financial support.

The data has been collected with support from the EWARS project. This is an initiative to strengthen early warning, alert and response in emergencies. It includes an online, desktop and mobile application that can be rapidly configured and deployed in the field. It is designed with frontline users in mind, and built to work in difficult and remote operating environments. This bulletin has been automatically published from the EWARS application.

More information can be found at <http://ewars-project.org>

