



NAMIBIA COVID-19 SITUATION REPORT NO. 551

Outbreak Name	COVID-19 outbreak	Country affected	Namibia
Date & Time	20 September 2021 17h00	Investigation start Date	13 March 2020
Prepared by	Surveillance Team		

HIGHLIGHTS/SITUATION UPDATE (20/09/2021)

CUMULATIVE	TOTAL TODAY
Tested 690 744	Tested 536
Confirmed 127 035	Confirmed 35
Active 1 267	Active 1 267
Recoveries 122 278	Recoveries 70
Vaccinated 1 st doses 248 269 2 nd doses 159 233	Vaccinated 1 st doses 2 691 2 nd doses 2 400
Deaths 3 478	Deaths 6

- A total of **127 035** cases have been recorded to-date, representing **5%** of the total population (**2 550 226**).
- More female cases **67 560 (53%)** have been recorded.
- Of the total confirmed cases, **4 317 (3%)** are Health Workers, with **2** new confirmations today.
 - 3 598 (83%) State; 711 (16%) Private, 8 (0.2%) Non-Governmental Organizations.
 - 4 265 (99%) recoveries and 25 (0.6%) deaths.
- The recovery rate now stands at **96%**.
- Khomas and Erongo regions reported the highest number of cases with **41 514 (33%)** and **18 222 (14%)** respectively.
- Of the total fatalities, **3 192 (92%)** are COVID-19 deaths while **286 (8%)** are COVID-19 related deaths. The case fatality rate now stands at **2.7%**.

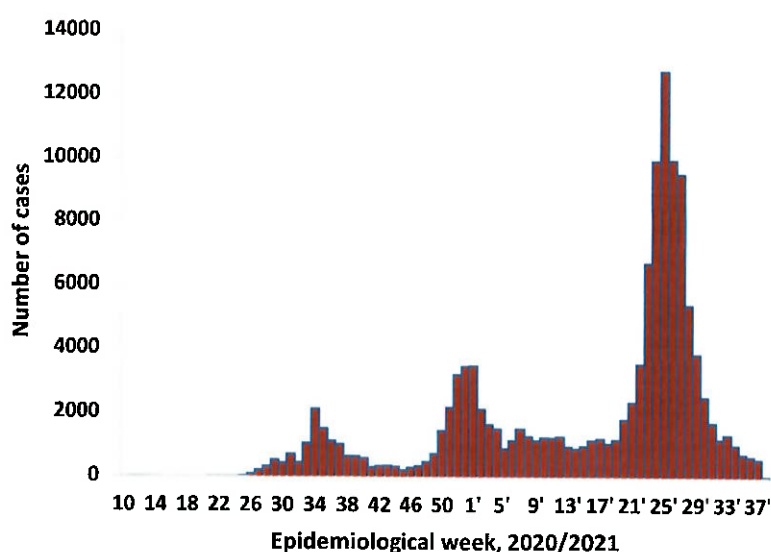
Table 1: Distribution of confirmed COVID-19 cases by region, 20 September 2021

Region	Total cases daily	Total No. of cases	Active cases	Recoveries	Cumulative Deaths	Cumulative deaths with co-morbidities	Non-COVID deaths	Health Workers
Erongo	0	18 222	69	17 740	408	339	5	417
Hardap	1	7 447	46	7 144	257	160	0	123
ǀKaras	5	7 779	85	7 549	145	125	0	237
Kavango East	5	5 469	9	5 264	195	117	1	246
Kavango West	0	637	9	610	18	16	0	38
Khomas	4	41 514	368	40 289	856	669	1	1 489
Kunene	0	3 676	51	3 516	109	80	0	97
Ohangwena	9	4 723	396	4 182	143	90	2	159
Omaheke	0	3 976	7	3 719	250	173	0	121
Omusati	2	5 567	95	5 250	222	134	0	180
Oshana	2	9 003	72	8 603	327	194	1	523
Oshikoto	6	6 684	31	6 478	173	138	2	318
Otjozondjupa	1	9 382	9	9 103	270	185	0	262
Zambezi	0	2 956	20	2 831	105	59	0	106
Total	35	127 035	1 267	122 278	3 478	2 479	12	4 317

EPIDEMIOLOGICAL SITUATION IN NAMIBIA

Table 2: The current distribution for hospitalization of confirmed cases by region, 20 September 2021

Region	Hospitalized confirmed cases	Intensive Care Unit
Erongo	14	5
Hardap	0	0
Kharas	5	0
Kavango East	6	0
Kavango West	2	0
Khomas	13	4
Kunene	7	0
Ohangwena	12	0
Omaheke	0	0
Omusati	14	0
Oshana	10	6
Oshikoto	4	2
Otjozondjupa	2	0
Zambezi	4	0
Total	93	17



- The highest peak of **12 787 (10%)** cases was recorded during week 25 of 2021 (Figure 1).
- After a peak in epi-week 25, the country has seen a gradual reduction in the average number of confirmed cases from 1 598 to 81 in epi-week 37.
- The number of cases have plateaued in the last four weeks as seen in the graph.

- The National Call Center continues operations for 24 hours daily.
- Today (20/09/2021), **980** calls were answered.

Figure 1: Epi-curve for confirmed COVID-19 cases, 20 September 2021

- The laboratory testing capacity has been enhanced; with a total of fifteen (15) laboratories carrying out the testing of samples: NIP, Path-Care, UNAM Molecular, Central Veterinary Laboratory, Namib Poultry, NAMDEB, NamPath, Namibia Central Pathology, DiagnoLab, High Care, Alpha Medical Laboratory, Des-Jo Medical Test Centre, ProQuest Diagnostic Laboratory, MAXI and Medlink Laboratory Services.
- To date, **690 208** tests (including **14 220** re-tests) have been conducted by authorized laboratories.
- Since the beginning of the outbreak, **142 430** contacts of confirmed cases have been identified, **118** new contacts were identified within the last 24 hours from 12 regions.
- Cumulatively, **139 920** contacts have completed their monitoring period, while **288** contacts are lost to follow-up and a total of **25 099 (20%)** contacts of confirmed cases have tested positive.
- Today, **534 (55%)** out of **972** active contacts were monitored.

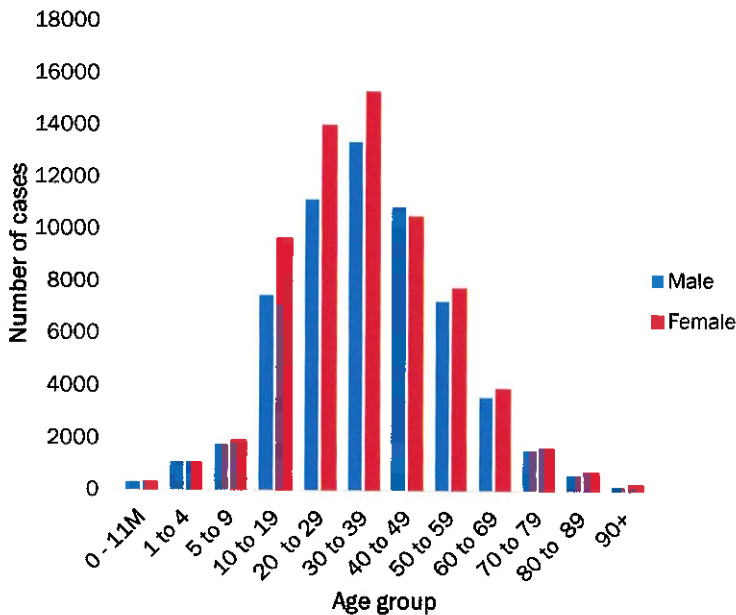
Table 3: COVID-19 specimen recorded at the Laboratories 20 September 2021

VARIABLES	TOTAL
Total samples received by the Laboratory	691 863
Total samples tested	676 520
Total samples re-tested	14 224
Total positive results	127 035
Total negative results	549 471
Total samples discarded	117
Invalid results	0
Total pending results	7
Indeterminant/Inconclusive	7
Suspected cases in 24 hours (excluding re-tests)	532

Table 4: Number of people in quarantine, 20 September 2021

Region	Newly quarantined 24 hours	Cumulative number	Number discharged	Number in quarantine now
Erongo	0	6 931	6 751	180
Hardap	0	2 911	2 900	11
Kavango (East and West)	0	1 673	1 673	0
Khomas	0	3 695	3 692	3
Kharas	0	9 909	9 809	100
Kunene	0	6 493	6 205	288
Ohangwena	0	695	695	0
Omaheke	137	15 154	14 959	195
Omusati	0	2 950	2 923	27
Oshana	0	400	400	0
Oshikoto	107	22 694	22 550	144
Otjozondjupa	0	1 743	1 703	40
Zambezi	0	2 006	1 991	15
Total	244	77 254	76 251	1 003

- Since March 2020, **77 254** people have been placed into quarantine around the country.
- A total of **1 003** people are currently in quarantine, with **244** admissions.



- Of the total confirmed cases, **75 401 (59%)** are in the 20-49 years age-brackets which constitutes the majority of the recorded cases.
- A total of **21 021 (17%)** of the confirmed cases are among the 5-19 years category.
- A total of **15 056 (12%)** of the confirmed cases are among the 50 - 59 years group.
- The under 5 years age group make up **2 863 (2%)** of the total cases whereas, **12 697 (10%)** are above 60 years of age.

Figure 2: Age and Sex distribution of COVID-19 confirmed cases 20 September 2021

Table 5: Summary of COVID-19 vaccine doses administered, 20 September 2021

Region	Cumulative no. of persons vaccinated with doses of Sinopharm, AstraZeneca, Sputnik V and Jassen & Johnson		Targeted Population	Vaccination Coverage (%)	Cumulative no. of Healthcare Workers vaccinated with doses of Sinopharm, AstraZeneca, Sputnik V and Jassen & Johnson	
	1 st doses	Fully vaccinated			1 st doses	Fully vaccinated
Erongo	26 757	18 227	121 682	15%	1037	655
Hardap	15 850	9 722	56 741	17%	456	350
Kharas	11 082	7 531	55 489	14%	612	312
Kavango East	12 858	6 337	117 665	5%	896	530
Kavango West	5 908	4 223	29 228	14%	341	257
Khomas	66 453	45 675	286 641	16%	3335	2114
Kunene	13 825	7 300	66 499	11%	544	381
Ohangwena	16 124	10 139	164 102	6%	688	455
Omaheke	11 496	6 023	51 765	12%	350	220
Omusati	16 581	10 863	139 451	8%	820	541
Oshana	14 994	10 275	126 374	8%	1262	830
Oshikoto	13 422	8 780	124 395	7%	712	549
Otjozondjupa	18 866	12 930	97 903	13%	712	461
Zambezi	4 053	2 944	63 106	5%	484	430
Total	248 269	160 969	1 501 041	11%	12249	8085

PUBLIC HEALTH ACTION (S)

- The COVID-19 vaccination programme is ongoing throughout the country.
- Public Health measures continue to be enforced as the situation is closely monitored.
- The government and development partners continue to prioritize the continuation of essential health services.

CHALLENGES

- Slow vaccine uptake among members of the public, and circulation of anti-vaccination information.
- Poor adherence to COVID-19 Infection Prevention and Control (IPC) measures by the general public.

RECOMMENDATIONS

- Encourage the public to get vaccinated and strengthen community health awareness to encounter anti-vaccination information in circulation.
- Continue to give awareness on the importance of adhering to COVID-19 IPC measures; with the involvement of the Security Cluster.

APPROVED



INCIDENT MANAGER
20 SEPTEMBER 2021



SECRETARIAT

For enquiries, please contact
Namibia Public Health Emergency Operations Centre;

 PHEOC@mhss.gov.na

 0800 100 100

 0851 100 100