



NAMIBIA COVID-19 SITUATION REPORT NO. 527

Outbreak Name	COVID-19 outbreak	Country affected	Namibia
Date & Time	27 August 2021 20h00	Investigation start Date	13 March 2020
Prepared by	Surveillance Team		

HIGHLIGHTS/SITUATION UPDATE (27/08/2021)

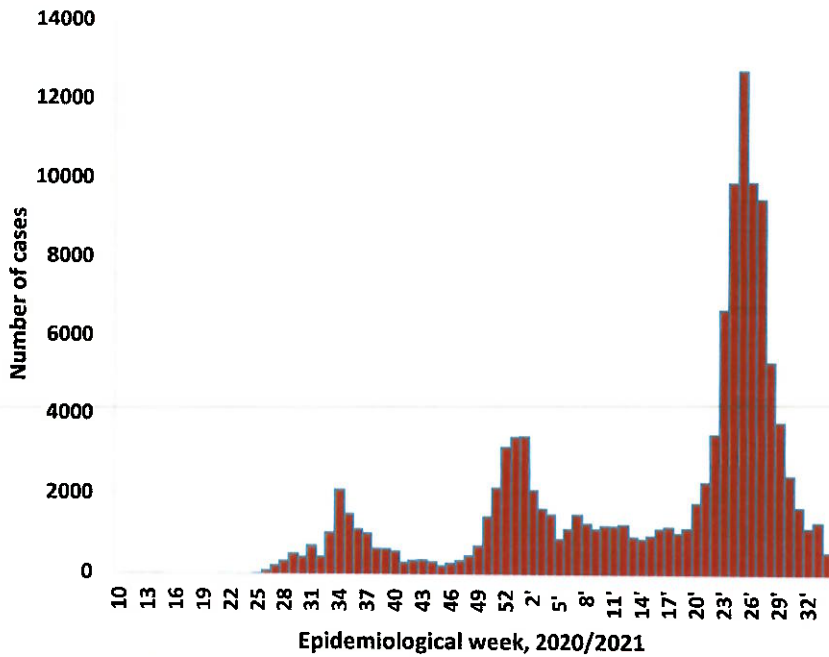
CUMULATIVE		CUMULATIVE	
Tested 657 045		Tested 939	
Confirmed 124 716		Confirmed 98	
Active 2 520		Active 2 520	
Recoveries 118 813		Recoveries 50	
Vaccinated		Vaccinated	
1 st doses 210 839	2 nd doses 111 030	1 st doses 1 217	2 nd doses 2 116
Deaths 3 372		Deaths 2	

- A total of **124 716** cases have been recorded to-date, representing **5%** of the total population (**2 550 226**).
- More female cases **66 166 (53%)** have been recorded.
- Of the total confirmed cases, **4 257 (3%)** are Health Workers.
 - 3 540 (83%) State; 709 (17%) Private, 8 (0.2%) Non-Governmental Organizations.
 - 4 157 (98%) recoveries and 25 (0.6%) deaths.
- The recovery rate now stands at **95%**.
- Khomas and Erongo regions reported the highest number of cases with **41 327 (33%)** and **18 100 (15%)** respectively.
- Of the total fatalities, **3 094 (92%)** are COVID-19 deaths while **278 (8%)** are COVID-19 related deaths. The case fatality rate now stands at **2.7%**.

Table 1: Distribution of confirmed COVID-19 cases by region, 27 August 2021

Region	Total cases daily	Total No. of cases	Active cases	Recoveries	Cumulative Deaths	Cumulative deaths with co-morbidities	Non-COVID deaths	Health Workers
Erongo	0	18 100	864	16 828	403	336	5	413
Hardap	8	7 388	41	7 091	256	160	0	123
Karas	4	7 654	195	7 318	141	124	0	233
Kavango East	4	5 423	20	5 226	177	114	0	244
Kavango West	0	593	21	554	18	15	0	38
Khomas	8	41 327	294	40 188	844	659	1	1 483
Kunene	10	3 454	36	3 327	91	73	0	92
Oshana	14	4 269	422	3 714	131	84	2	145
Omaheke	31	3 856	144	3 463	249	172	0	120
Omusati	4	5 217	284	4 726	207	125	0	171
Oshana	5	8 812	108	8 383	320	191	1	519
Oshikoto	9	6 534	23	6 347	162	129	2	314
Otjozondjupa	1	9 197	43	8 884	270	185	0	257
Zambezi	0	2 892	25	2 764	103	59	0	105
Total	98	124 716	2 520	118 813	3 372	2 426	11	4 257

EPIDEMIOLOGICAL SITUATION IN NAMIBIA



➤ The highest peak of **12 787 (10%)** cases was recorded during week 25 of 2021 (Figure 1).

➤ The National Call Center continues operations for 24 hours daily.
 ➤ Today (27/08/2021), **490** calls were answered including **8** alerts.

Figure 1: Epi-curve for confirmed COVID-19 cases, 27 August 2021

Table 2: The current distribution for hospitalization of confirmed cases by region, 27 August 2021

Region	Hospitalized confirmed cases	Intensive Care Unit
Erongo	23	9
Hardap	5	0
Kharas	8	0
Kavango East	7	0
Kavango West	0	0
Khomas	50	13
Kunene	13	0
Ohangwena	16	0
Omaheke	5	0
Omusati	22	0
Oshana	19	2
Oshikoto	12	3
Otjozondjupa	6	0
Zambezi	0	0
Total	186	27

- Of the total confirmed cases, **74 496 (60%)** are in the 20-49 years age-brackets which constitutes the majority of the recorded cases.
- A total of **20 192 (16%)** of the confirmed cases are among the 5-19 years category.
- A total of **14 863 (12%)** of the confirmed cases are among the 50 - 59 years group.
- The under 5 years age group make up **2 783 (2%)** of the total cases whereas, **12 382 (10%)** are above 60 years of age.

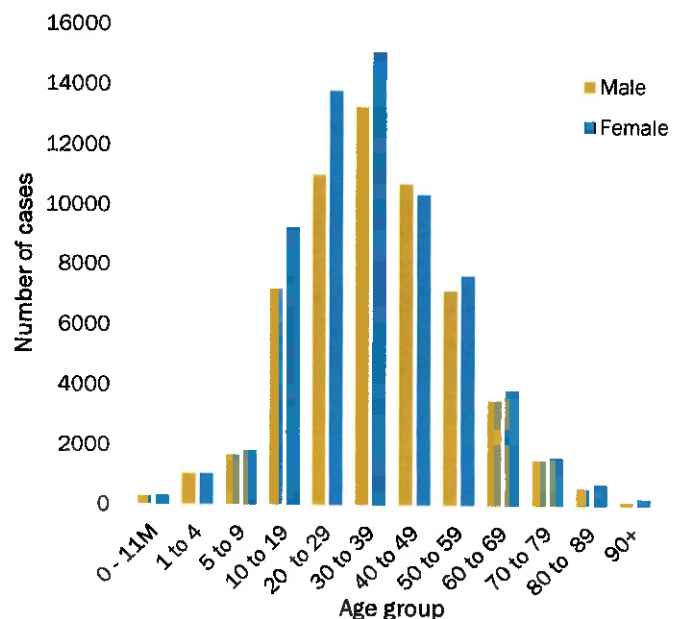


Figure 2: Age and Sex distribution of COVID-19 confirmed cases 27 August 2021

**Table 3: COVID-19 specimen recorded at the Laboratories
27 August 2021**

VARIABLES	TOTAL
Total samples received by the Laboratory	657 162
Total samples tested	642 926
Total samples re-tested	14 119
Total positive results	124 716
Total negative results	518 198
Total samples discarded	117
Invalid results	0
Total pending results	7
Indeterminant/Inconclusive	5
Suspected cases in 24 hours (excluding re-tests)	936

- The laboratory testing capacity has been enhanced; with a total of fifteen (15) laboratories carrying out the testing of samples: NIP, Path-Care, UNAM Molecular, Central Veterinary Laboratory, Namib Poultry, NAMDEB, NamPath, Namibia Central Pathology, DiagnoLab, High Care, Alpha Medical Laboratory, Des-Jo Medical Test Centre, ProQuest Diagnostic Laboratory, MAXI and Medlink Laboratory Services.
- To date, **656 162** tests (including **14 119** re-tests) have been conducted by authorized laboratories.
- Since the beginning of the outbreak, **138 501** contacts of confirmed cases have been identified, **375** new contacts were identified within the last 24 hours from 8 regions.
- Cumulatively, **135 106** contacts have completed their monitoring period, while **180** contacts are lost to follow-up and a total of **24 506 (20%)** contacts of confirmed cases have tested positive.
- Today, **1 035 (52%)** out of **1 972** active contacts were monitored.

Table 4: Number of people in quarantine, 27 August 2021

Region	Newly quarantined 24 hours	Cumulative number	Number discharged	Number in quarantine now
Erongo	0	6931	6531	400
Hardap	0	2845	2838	7
Kavango (East and West)	0	1668	1665	3
Khomas	0	3692	3690	2
Kharas	0	9909	9689	220
Kunene	0	6355	6133	222
Ohangwena	0	695	695	0
Omaheke	0	14102	13525	577
Omusati	0	2670	2500	170
Oshana	0	400	400	0
Oshikoto	50	21576	21310	266
Otjozondjupa	0	1565	1540	25
Zambezi	0	1991	1991	0
Total	50	74 399	72 507	1 892

- Since March 2020, **74 399** people have been placed into quarantine around the country.
- A total of **1 892** people are currently in quarantine, with **50** admissions.

Table 5: Summary of COVID-19 vaccine doses administered, 27 August 2021

	Cumulative no. of persons vaccinated with doses of Sinopharm and AstraZeneca		Targeted Population	Vaccination Coverage (%)	Cumulative no. of Healthcare Workers vaccinated with doses of Sinopharm and AstraZeneca	
	1 st doses	2 nd doses			1 st doses	2 nd doses
Erongo	22 731	12 005	121 682	9%	957	606
Hardap	13 602	5 646	56 741	10%	425	292
Kharas	9 191	5 384	55 489	9%	584	278
Kavango East	11 104	4 794	117 665	4%	831	432
Kavango West	4 870	2 611	29 228	9%	329	205
Khomas	58 069	34 797	286 641	12%	3 258	1 973
Kunene	10 651	4 242	66 499	6%	508	332
Ohangwena	13 141	5 724	164 102	3%	634	341
Omaheke	9 345	4 030	51 765	7%	335	200
Omusati	14 024	6 961	139 451	5%	775	438
Oshana	12 924	7 277	126 374	6%	1117	712
Oshikoto	11 089	5 591	124 395	4%	677	475
Otjozondjupa	16 533	9 589	97 903	10%	698	444
Zambezi	3 565	2 379	63 106	4%	445	360
Total	210 839	111 030	1 501 041	7%	11 573	7 088

PUBLIC HEALTH ACTION (S)

- Public Health measures continues to be enforced as the situation is closely monitored.
- The COVID-19 vaccination programme is ongoing throughout the country
- The government and development partners continue to prioritize the continuation of essential health services.

CHALLENGES

- Poor adherence to COVID-19 Infection Prevention and Control (IPC) measures by the general public.

RECOMMENDATIONS

- Continue to give awareness on the importance of adhering to COVID-19 IPC measures; with the involvement of the Security Cluster.

APPROVED



INCIDENT MANAGER
27 AUGUST 2021



SECRETARIAT

For enquiries, please contact
Namibia Public Health Emergency Operations Centre;



PHEOC@mhss.gov.na



0800 100 100



0851 100 100